

HOLE VOLUMES 139.7mm CASING

COMPANY **PARAMOUNT RESOURCES LTD**
WELL **PARA ET AL CAMERON E-72**
FIELD **CAMERON HILLS**
PROVINCE/COUNTY **NORTHWEST TERRITORIES**
COUNTRY/STATE **CANADA**
LOCATION **300/E-72-60-10-117-15/00** **FIELD PRINT**

LSD SEC TWP RGE Other Services
COMPENSATED SONIC PHOTO DENSITY
MICROLOG DUAL SPACED NEUTRON
Permit Number 2048 ARRAY INDUCTION

Permanent Datum GROUND LEVEL, Elevation 729.00 metres
Log Measured From K.B., 5.40M above Permanent Datum
Drilling Measured From KELLY BUSHING

Elevations:
KB metres 734.40
DF
GL 729.00

Date 02-MAR-2007

Run Number 1

Depth Driller 1408.00 metres

Depth Logger 1406.30 metres

First Reading 1398.00 metre

Last Reading 434.00 metre

Casing Driller 435.00 metres

Casing Logger 434.00 metres

Bit Size 200.00 mm

Hole Fluid Type GELCHEM

Density / Viscosity 1120.0kg/M3 65.00 sec/L

PH / Fluid Loss 10.50 12.00 ml/30Min

Sample Source FLOWLINE

Rm @ Measured Temp 1.25 @ 25.0 ohm-m

Rmf @ Measured Temp 0.95 @ 25.0 ohm-m

Rmc @ Measured Temp 1.43 @ 25.0 ohm-m

Source Rmf / Rmc PRESS FILTER

Rm @ BHT 0.85 @ 46.0 ohm-m

Time Since Circulation 7.0 HRS

Max Recorded Temp 46.00 deg C

Equipment Name 13131

Equipment / Base QUINT GPR

Recorded By ADAM SMITH

Witnessed By BRAD POWELL

CIRC STOP 09:45 MAR-02 Last Line

BOREHOLE RECORD

Last Edited: 2-MAR-2007 13:39

Bit Size millimetres	Depth From metres	Depth To metres
311.000	0.00	435.00
200.000	435.00	1408.00

CASING RECORD

Type	Size millimetres	Depth From metres	Shoe Depth metres	Weight pounds/ft
SURFACE	219.100	0.00	435.00	24.00

REMARKS

- 1) SOFTWARE ISSUE: WLS 7.01.0195.
- 2) CUSTOMER SCALES AND LOGGED INTERVALS USED
- 3) TOOLS RUN: MAI, MSS, MPD, MDN, MML, ISC, MGS, MTC, MFE, MCG RUN IN COMBINATION
- 4) HARDWARE: MAI: TWO 25.4 MM STANDOFFS
MSS: THREE 25.4 MM STANDOFFS
MDN: DUAL BOWSPRING
MTC: ONE SIX LEAF CENTRALIZER

6) RIG: PD #220

7) HOLE AND CEMENT VOLUMES CALCULATED USING DENSITY AND 2-ARM CALIPERS :

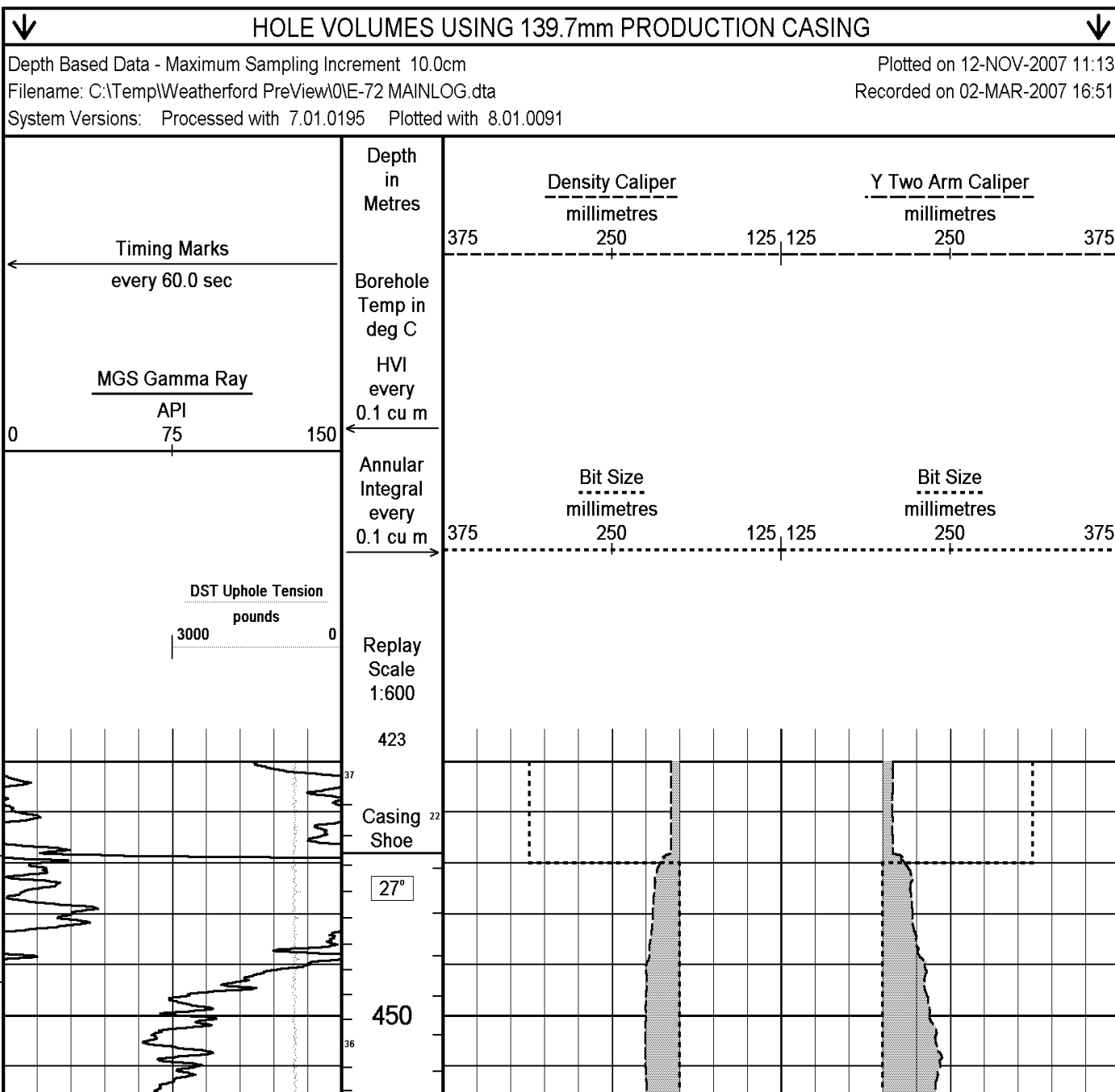
OPEN HOLE VOLUME = 36.8 CU.M.

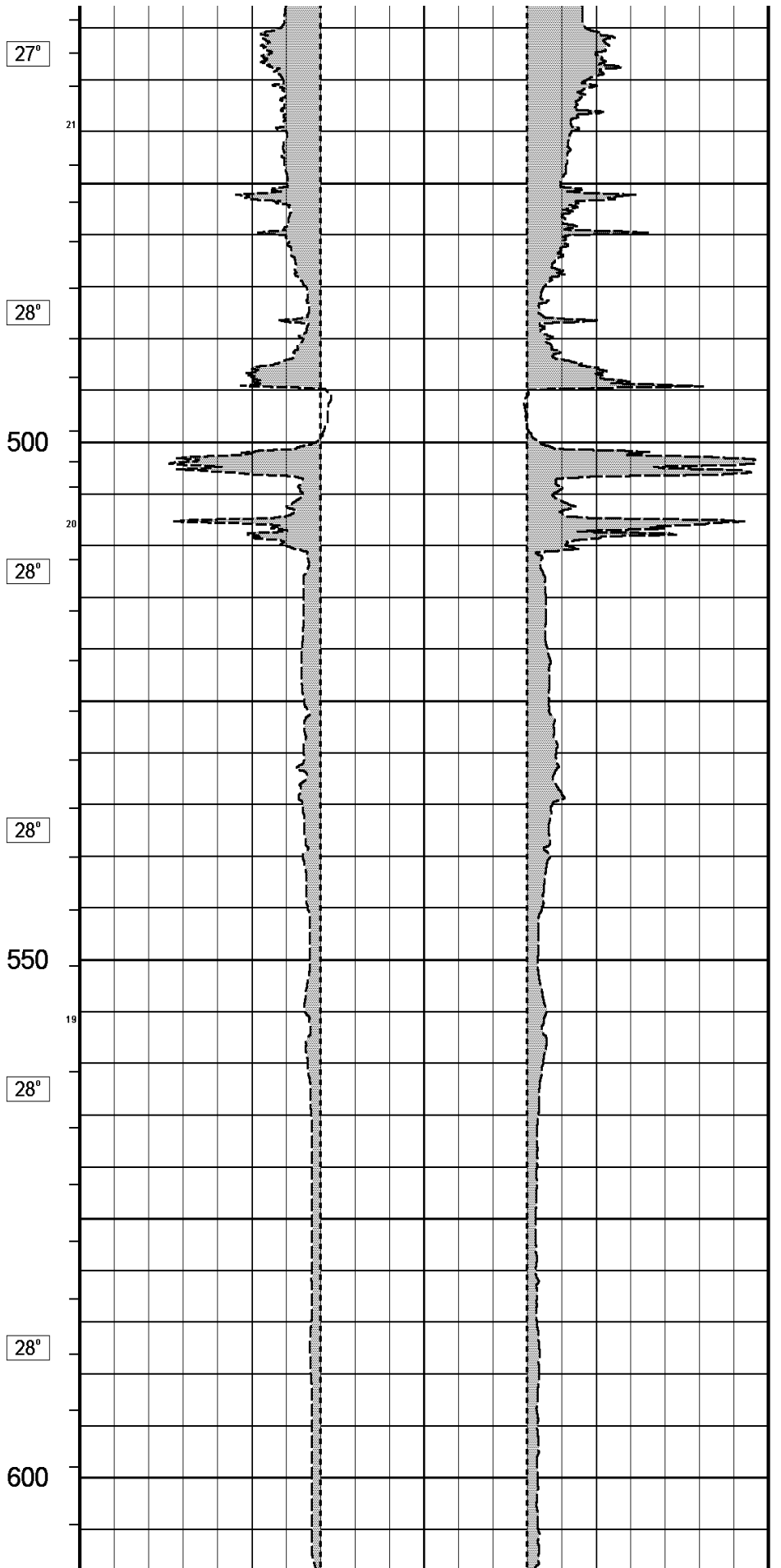
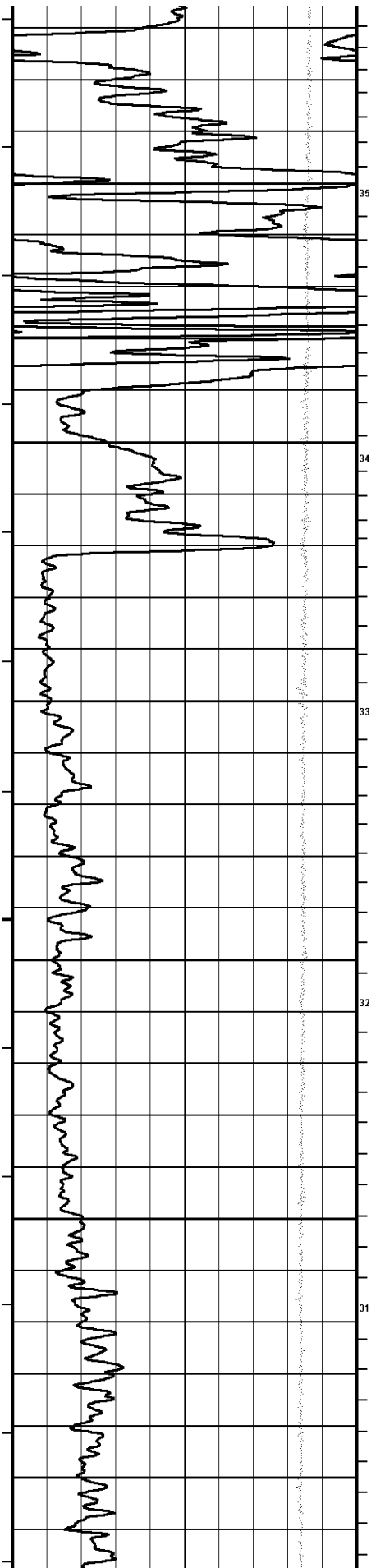
ANNULAR VOLUME USING 139.7 MM PRODUCTION CASING = 22.0 CU.M

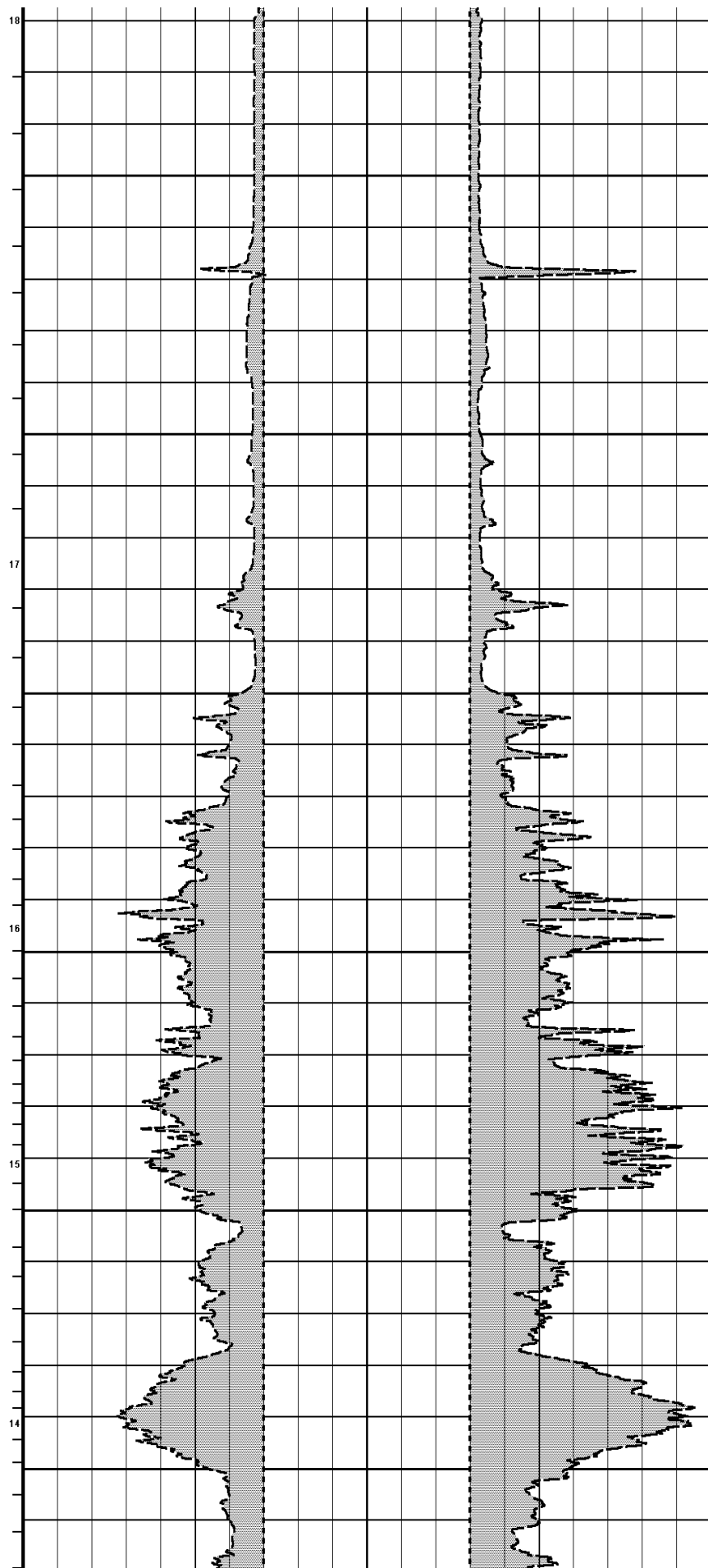
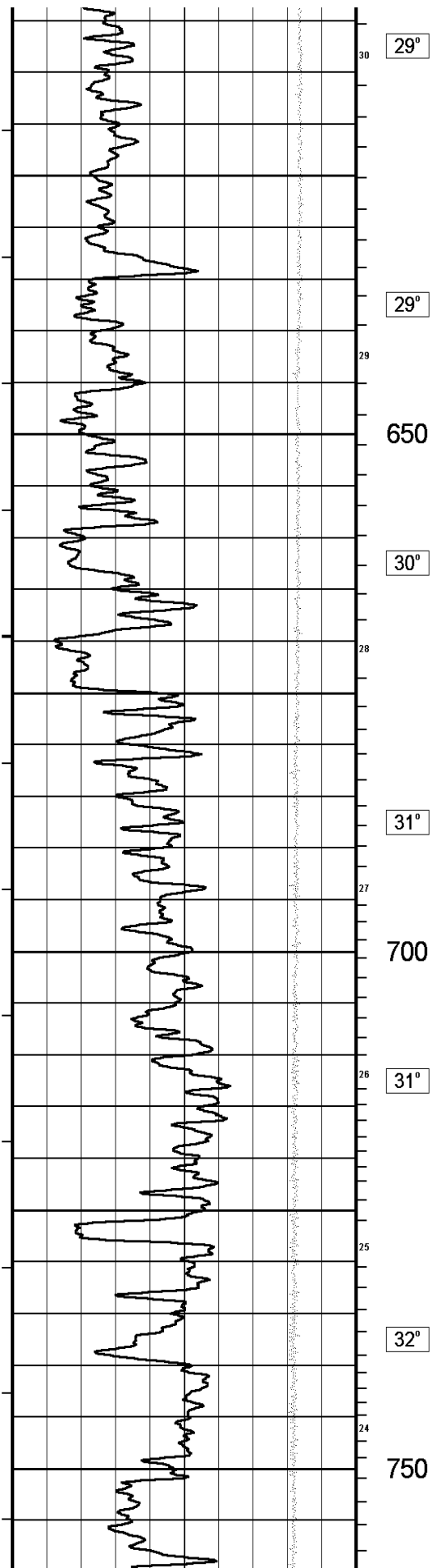
8) AREAS OF BOREHOLE RUGOSITY MAY CAUSE POOR DENSITY PAD CONTACT AND THUS HIGH DENSITY CORRECTION.
DENSITY POROSITY DATA MAY BE SKEWED AT THOSE INTERVALS.

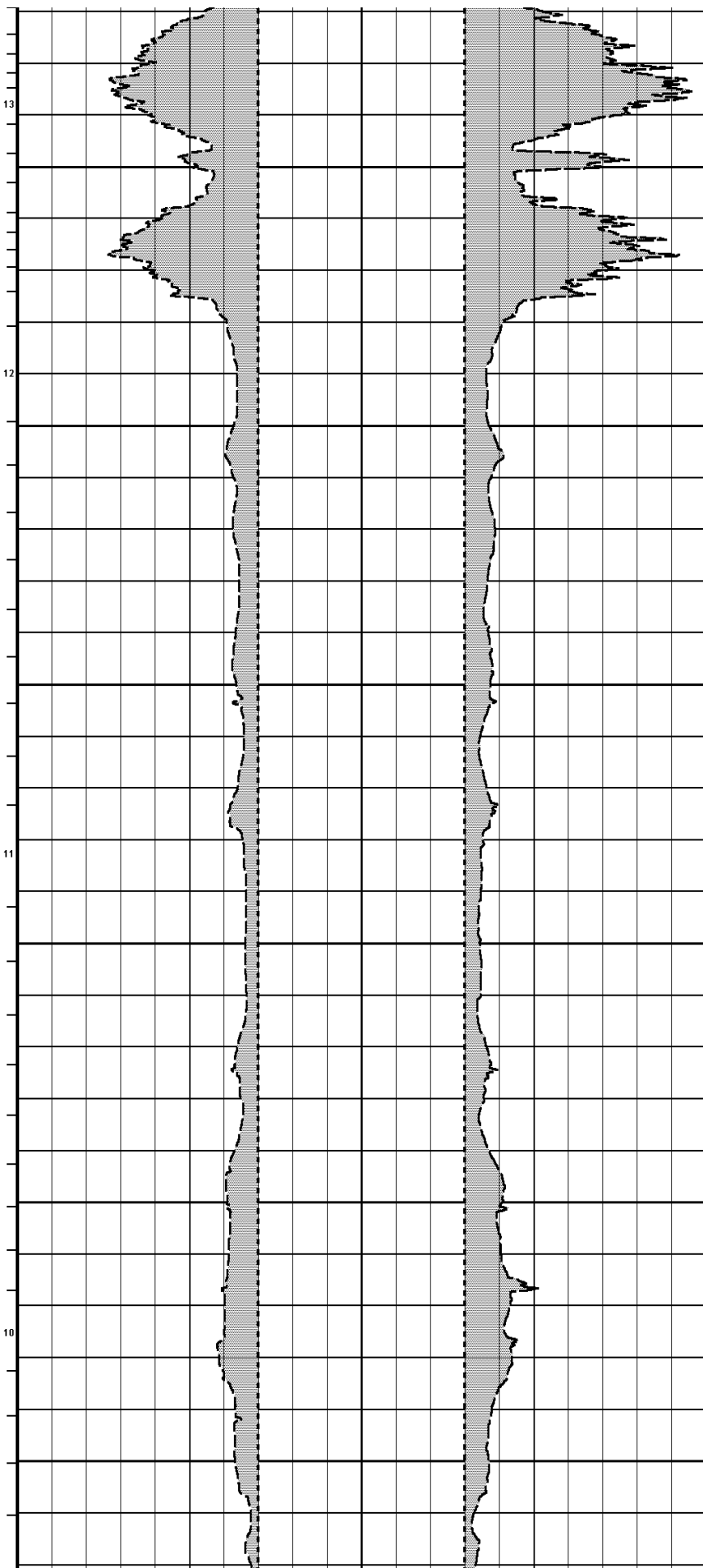
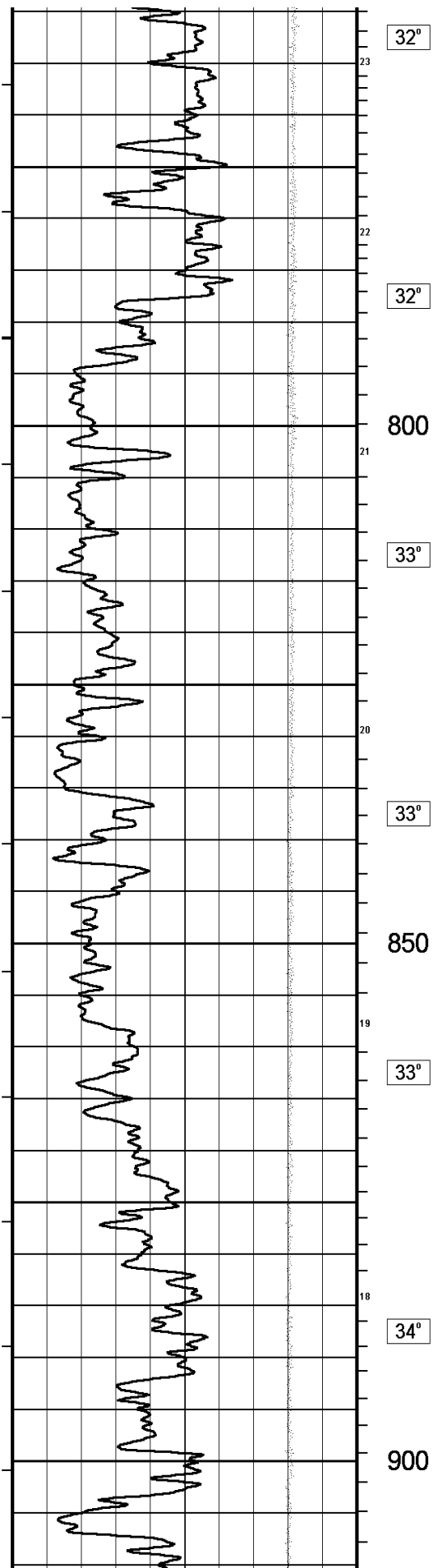
9) ADDITIONAL PASS MADE TO IMPROVE SONIC OVERLAY. DATA LOOKS GOOD BUT IS A LITTLE NOISY IN SOME SECTIONS.
ADDITIONAL REPEAT SHOWN TO FURTHER VERIFY RESPONSE.

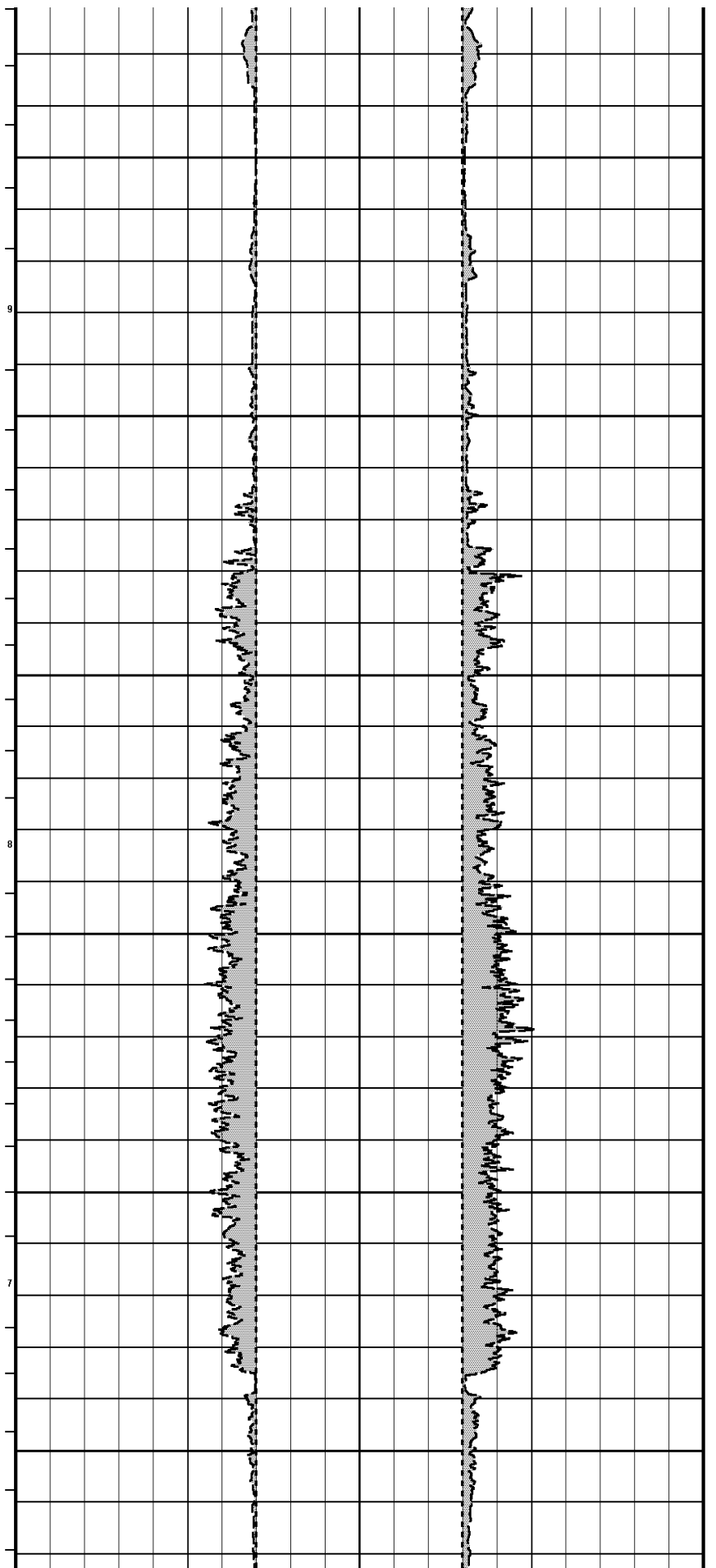
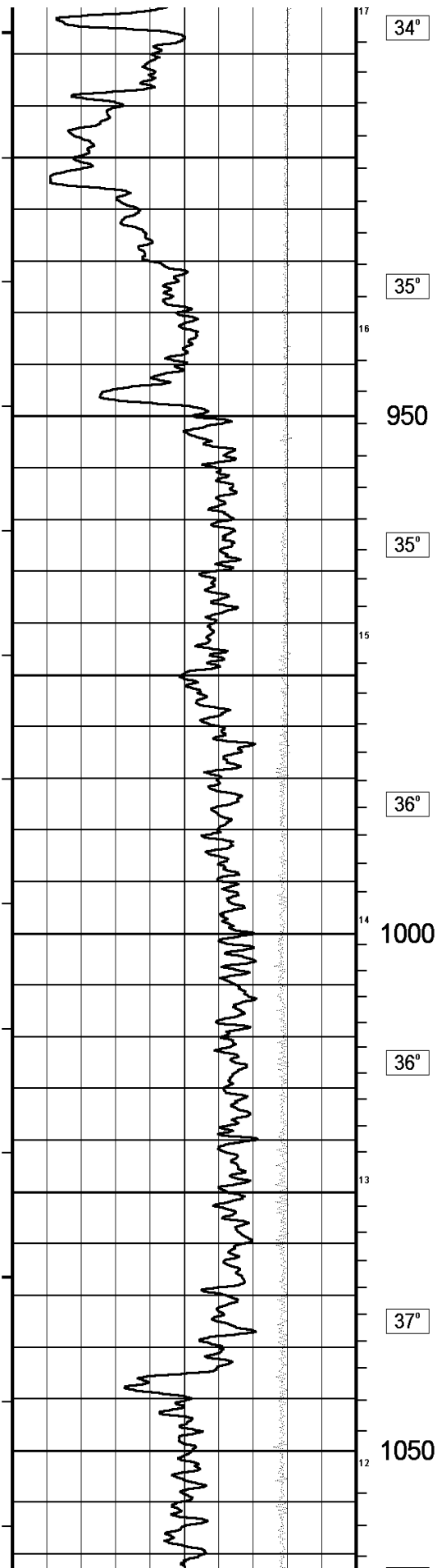
All interpretations are opinions based on inferences from electrical or other measurements and we cannot, and do not, guarantee the accuracy or correctness of any interpretations, and we shall not, except in the case of gross or wilful negligence on our part, be liable or responsible for any loss, costs, damages or expenses incurred or sustained by anyone resulting from any interpretation made by any of our officers, agents or employees. These interpretations are also subject to our general terms and conditions in our price schedule.

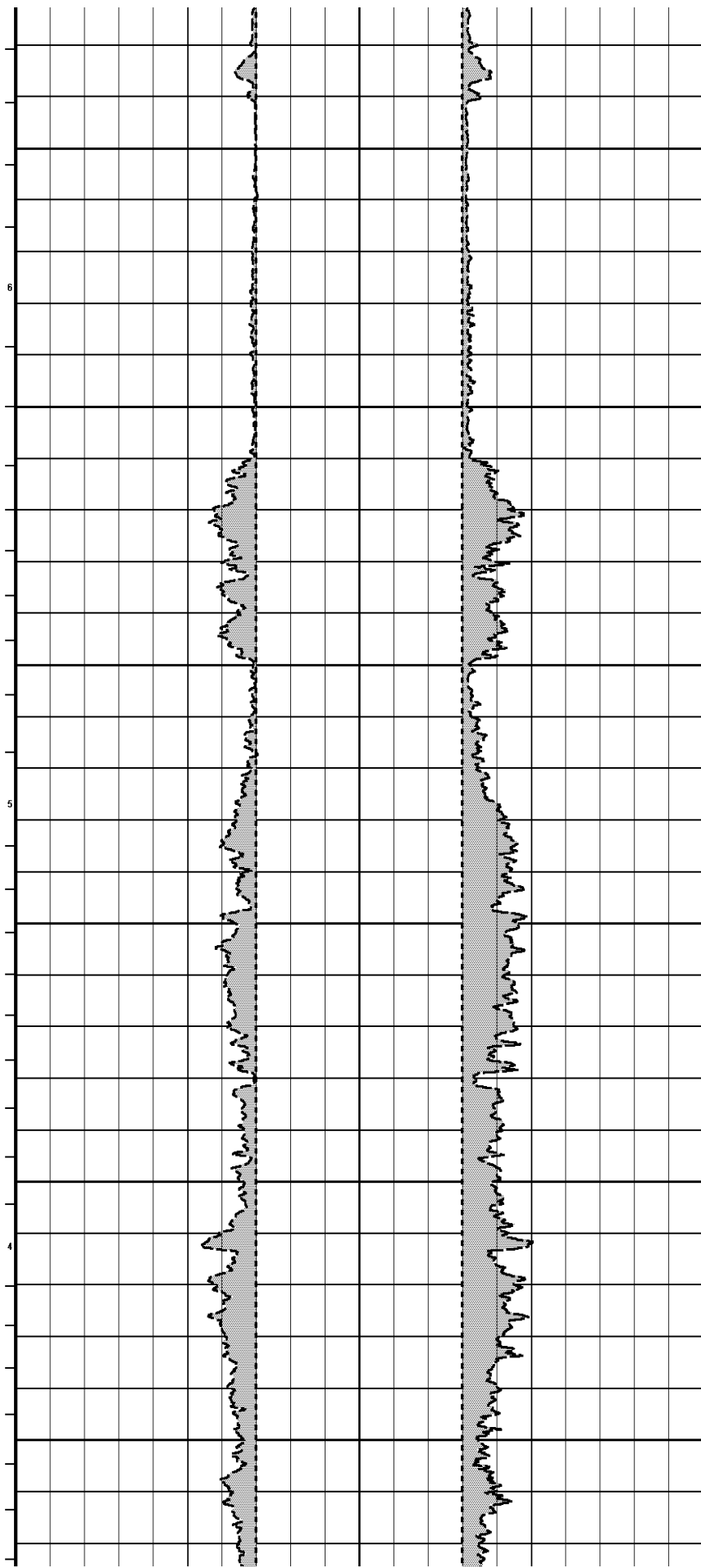
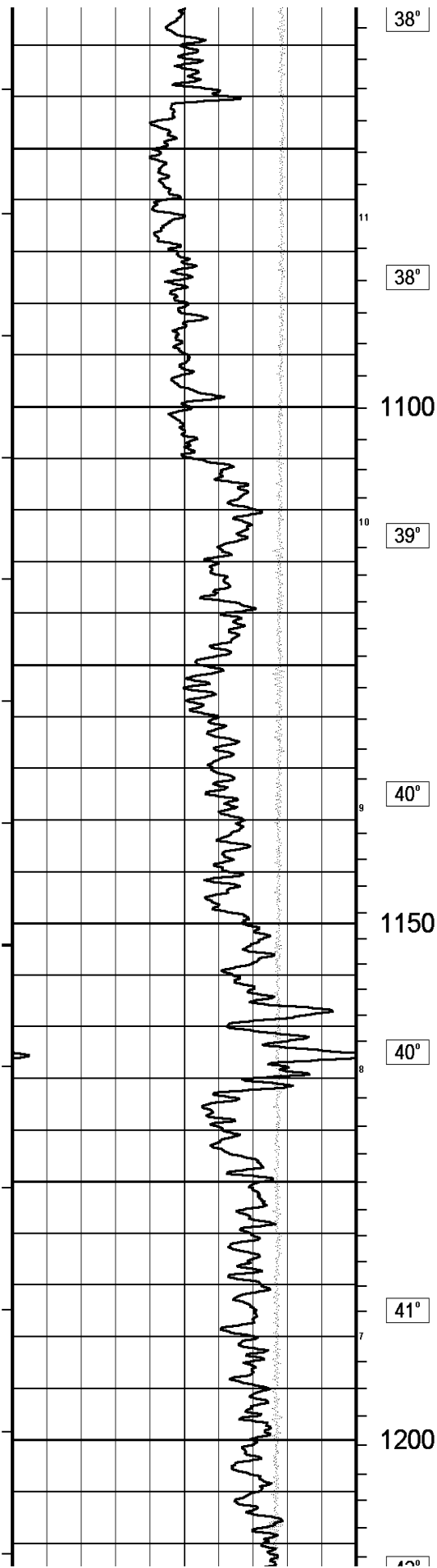


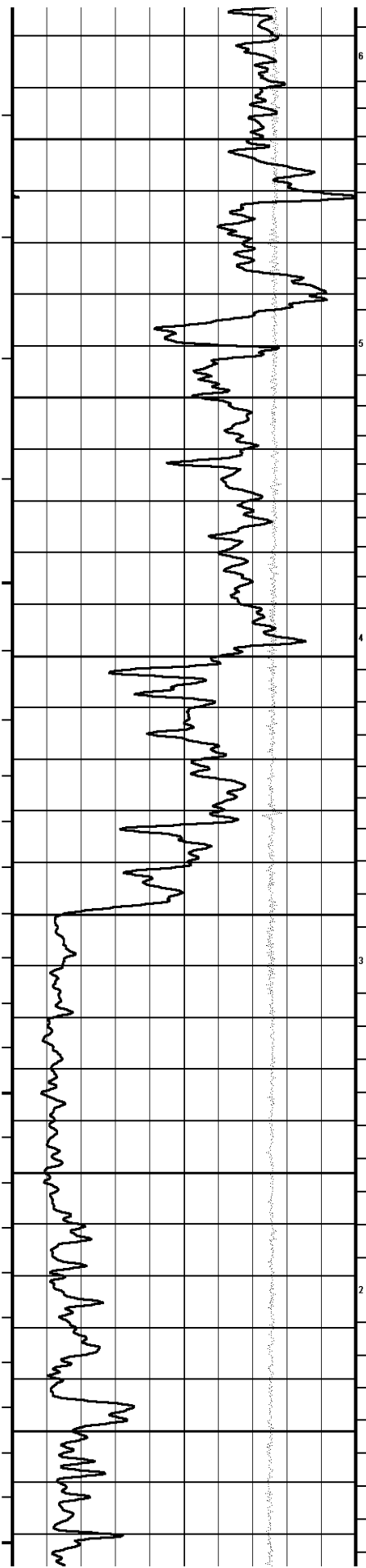












42

43°

1250

44°

44°

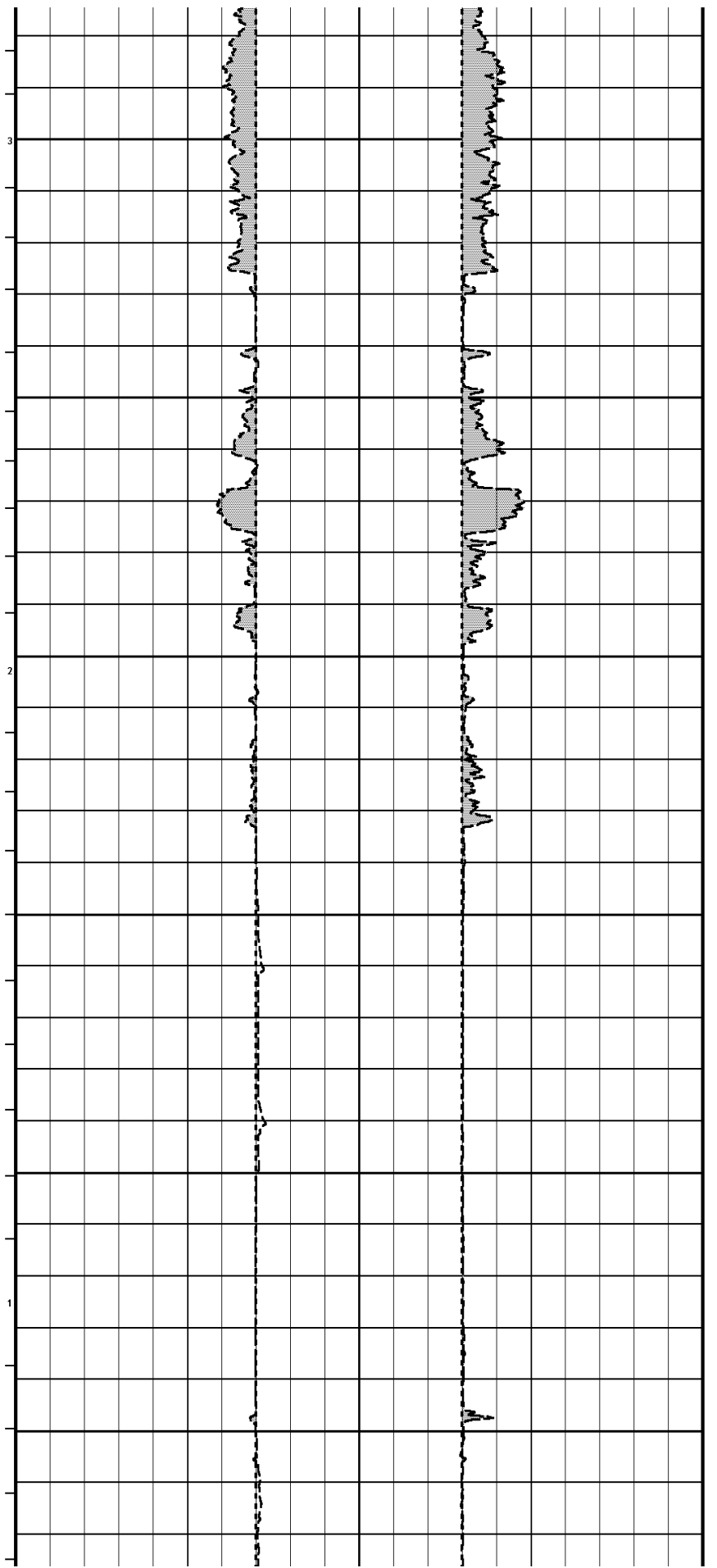
1300

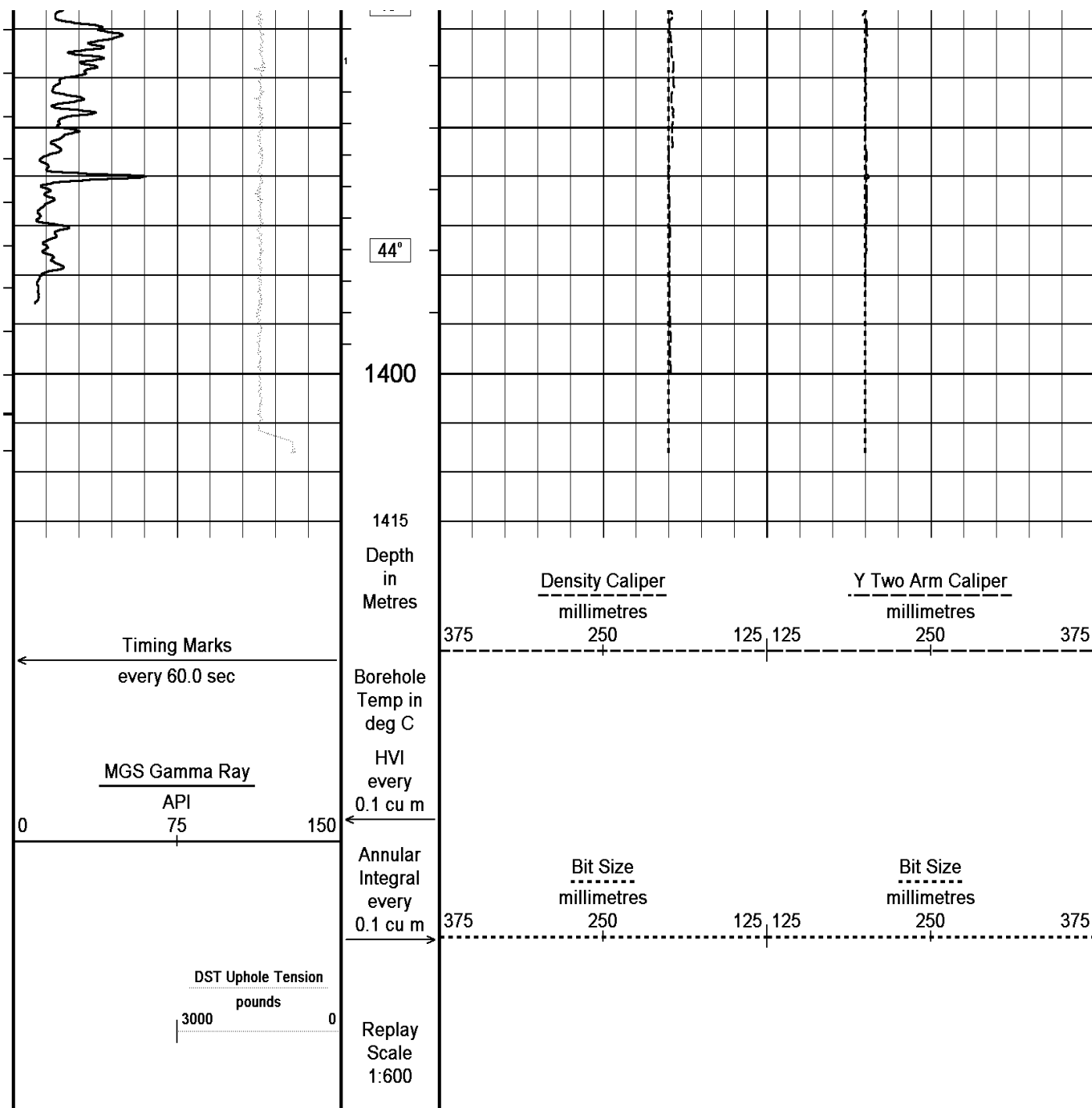
44°

44°

1350

45°





Depth Based Data - Maximum Sampling Increment 10.0cm

Filename: C:\Temp\Weatherford PreView\0VE-72 MAINLOG.dta

System Versions: Processed with 7.01.0195 Plotted with 8.01.0091

Plotted on 12-NOV-2007 11:13

Recorded on 02-MAR-2007 16:51

↑ HOLE VOLUMES USING 139.7mm PRODUCTION CASING ↑

COMPANY	PARAMOUNT RESOURCES LTD
WELL	PARA ET AL CAMERON E-72
FIELD	CAMERON HILLS
PROVINCE/COUNTY	NORTHWEST TERRITORIES
COUNTRY/STATE	CANADA
Elevation Kelly Bushing	734.40 metres
First Reading	1398.00 metre

Elevation Drill Floor		metres	Depth Driller	1408.00	metres
Elevation Ground Level	729.00	metres	Depth Logger	1406.30	metres



Weatherford®

HOLE VOLUMES

139.7mm CASING