



4700, 888 – 3rd Street SW, Calgary, AB T2P 5C5
Phone: (403) 290-3600

March 27, 2026

Office of the Regulator of Oil & Gas Operations
Government of the Northwest Territories
PO Box 132
Yellowknife NT
X1A 2L9

Attention: Ms. Pauline de Jong
Executive Director

Cover Letter for Cut/Cap Operation as part of the Well Abandonment
MGM NOGHA C-49, 300/C-49-6640-12545/01 WID1934

Please find attached for submission the required documents for Well Termination (Abandonment) of the 300/C-49-6640-12545/01, WID1934

Attachments include:

1. Change of Well Status
2. Well Termination Record
3. Summary of Cut/Cap Well Operations
4. Picture of capped wellbore
5. Picture of well abandonment sign
6. Downhole Schematic

Non-Saline Water was placed in the wellbore as part of the abandonment program. MGM submitted and received OROGO approval for variances to deviate from the approved abandonment program both to set a plug in a different profile and location as well as to jet cut the tubing above the on-off connector when it was unable to be disconnected as planned. No further issues were encountered in the completion of the abandonment operations.

Sincerely,

MGM Energy Corporation

John Hawkins, P. Eng.
Director Asset Management
403-817-5074

CHANGE OF WELL STATUS

This form must be filed with the Office of the Regulator of Oil and Gas Operations within 30 days of a change in well status.

INSTRUCTIONS:

Send one electronic copy of this form by email to orogo@gov.nt.ca. If you wish to communicate with OROGO in hard copy, please do so using the courier address found at www.orogo.gov.nt.ca.

WELL INFORMATION

Well Name	MGM NOGHA C-49	Operator	MGM Energy Corp.
Well Identifier (WID)	1934	Unique Well Identifier (30xx...)	300/C-49-6640-12545/01


STATUS INFORMATION

Effective Date: March 7, 2026

Well Type: <u>Other</u>
If other, specify: <u>Suspended - no production</u>
Well Mode: <u>Abandoned</u>
If other, specify:
Other:
If other, specify:

Fluid Production: (choose all applicable)	
Not applicable <input checked="" type="checkbox"/>	Steam <input type="checkbox"/>
Crude Oil <input type="checkbox"/>	Air <input type="checkbox"/>
Gas <input type="checkbox"/>	Carbon Dioxide <input type="checkbox"/>
Water <input type="checkbox"/>	Nitrogen <input type="checkbox"/>
Brine <input type="checkbox"/>	Liquefied Petroleum Gas <input type="checkbox"/>
Acid Gas <input type="checkbox"/>	Bitumen <input type="checkbox"/>
Solvent <input type="checkbox"/>	Other <input type="checkbox"/>

"I certify that the information provided on this form is true and correct"

Name	John Hawkins	Phone	(403) 817-5074 Ext
Title	Director Asset Management	E-Mail	john.hawkins@paramountres.com
Operator	MGM Energy Corporation		
Signature	 Responsible Officer of Company	Date	March 20, 2026

WELL TERMINATION RECORD

INSTRUCTIONS:

1. Complete both pages.
2. Send one electronic copy of this form and supporting technical documentation by email to orogo@gov.nt.ca. If you wish to communicate with OROGO in hard copy, please do so using the courier address found at www.orogo.gov.nt.ca.

WELL INFORMATION

Well Name	PARA et al NOGHA C-49	Operator	MGM Energy Corp.
Well Type	Exploratory Well (if Other, specify _____)	Contractor	Precision Well Servicing
Well Identifier	1934	Current Well Status	Abandoned

RELATED LICENCES AND AUTHORIZATIONS

Operating Licence No.	NWT-OL-2014-009	Operations Authorization	OA - 2019-002-MGM
PRA Licence No.	Exploration Licence NWT-OL-2014-009	Approval to Alter Condition of Well	ACW - 2019-018-MGM-C-49-WID1934

LOCATION INFORMATION

Coordinates	Datum: NAD83 (if Other, please specify _____)		
	Surface	Lat 66 ° 38 ' 5 "	Long 125 ° 53 ' 42 "
	Bottom Hole	Lat 66 ° 38 ' 7 "	Long 125 ° 53 ' 42 "
Region:	Sahtu	Unit C	Section 49
		Grid	66-40 125-45

ACTIVITY INFORMATION

Target Formation(s)	Mt. Clark, Mt. Cap	Field/Pool(s)	/
Elevation KB/RT	359.8 m	Ground Level / Seafloor	353.8 m
Spud/Re-entry Date	_____ days	Total Depth	1409.0 m KB
Rig Release Date	_____	Total Vertical Depth	1408.2 m KB

CASING AND CEMENTING PROGRAM

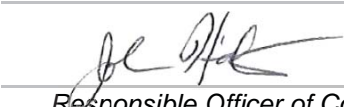
O.D. (mm)	Weight (kg/m)	Grade	Setting Depth (m KB)	Cementing (m ³)
244.5	53.5	J-55	509.0	
177.8	38.7 & 34.2	PS-80	1409.0	21.8

PLUGGING PROGRAM					
Type of Plug	Interval (m KB)	Felt	Setting Depth (m KB)	Cementing (m ³)	
Other	1333.0-1333.3	Yes	1333.0		
Bridge	1330.5-1330.8	No	1330.5	1.0	
Select	-	Select			
Select	-	Select			

PERFORATION	
Interval (m KB)	Comments
-	
-	
-	
-	

OTHER	
Lost Circulation/Overpressure Zones	No
Equipment Left on Site (Describe)	Tombstone
Provision for Re-entry (Describe and attach sketch)	No
Other Downhole Completion/Suspension	Zonal Abandonment completed February 25, 2026
Additional Comments	

"I certify that the information provided on this form is true and correct"

Name	<u>John Hawkins</u>	Phone	<u>(403) 817-5074 Ext</u>
Title	<u>Director Asset Management</u>	E-Mail	<u>john.hawkins@paramountres.com</u>
Operator	<u>MGM Energy Corp.</u>		
Signature	 <u>Responsible Officer of Company</u>	Date	<u>March 20, 2026</u>



ARO Daily Op Summary

Well Name: MGM NOGHA C-49

Well Header					
API/UWI 300/C-49-6640-12545/01	Surface Legal Location C-49-6640-12545	Field Name Nogha	License # N1934	State/Province NorthWest Territories	Well Configuration Type Deviated
Ground Elevation (m) 354.10	Casing Flange Elevation (m) 354.60	KB-Ground Distance (m) 5.30	KB-Casing Flange Distance (m) 4.80	Spud Date 1/25/2003	Rig Release Date 3/13/2003

Daily Operations

Start Date	Summary
2/1/2026	<p>HSE Summary : No incidents, accidents or spills. Contractors appear fit for duty.</p> <p>Operations Summary : - Arrange materials and contractor for Colville Lake 2026 Abandonment operations. - End of report for day.</p>
2/3/2026	<p>HSE Summary : No incidents, accidents or spills. Contractors appear fit for duty.</p> <p>Operations Summary : - WSS travel from Grande Prairie to Ft Simpson NWT - End of report for day.</p>
2/4/2026	<p>HSE Summary : No incidents, accidents or spills. Contractors appear fit for duty.</p> <p>Operations Summary : - All contractors maintain travel management notifications to WSS at start and end of day. - WSS travel from Ft Simpson to Norman Wells. - Canruss MTC and Ketek (2) hauling office trailer and combo unit travel from Ft Nelson to Ft Simpson. - End of report for day.</p>
2/5/2026	<p>HSE Summary : No incidents, accidents or spills. Contractors appear fit for duty.</p> <p>Operations Summary : - All contractors maintain travel management notifications to WSS at start and end of day. - WSS travel from Norman Wells to Colville Camp. - Canruss MTC and Ketek (2) hauling office trailer and combo unit travel from Ft Simpson to Norman Wells. - HRN Trucking (2) winch tractors and (1) bed truck travel from Norman Wells to Colville Camp. - End of report for day.</p>
2/6/2026	<p>HSE Summary : No incidents, accidents or spills. Contractors appear fit for duty.</p> <p>Operations Summary : - All contractors maintain travel management notifications to WSS at start and end of day. - Canruss MTC and Ketek (2) hauling office trailer and combo unit travel from Norman Wells to site. - Perform 15 minute Surface Casing Vent Flow Bubble Test. Observe no bubbles. - Haul loader, (11) 8' x 40' rig mats and 80 HP boiler to site from Coleville camp. Bed truck assist winch tractors on lease access km 45 hill. - Spot matting and boiler as per MGM Energy, contractor and industry spacing requirements. - End of report for day.</p>
2/7/2026	<p>HSE Summary : No incidents, accidents or spills. Contractors appear fit for duty.</p> <p>Operations Summary : - All contractors maintain travel management notifications to WSS at start and end of day. - Ketek (2) travel back to base in Ft Nelson. PWS field superintendent clear snow in PWS yard in Norman Wells. - Canadian Group cementers travel from Drayton Valley to High Level. - Spot matting for rig operations as per MGM Energy, contractor and industry spacing requirements. - Haul and spot on location rig pump, rig tank, catwalk and (2) pipe racks. Bed truck assist winch tractors on lease access km 45 hill. Haul in 17,4112 L - clear diesel - End of report for day.</p>
2/8/2026	<p>HSE Summary : No incidents, accidents or spills. Contractors appear fit for duty.</p> <p>Operations Summary : - All contractors maintain travel management notifications to WSS at start and end of day. - PWS 891 rig crew fly to Norman Wells. Field superintendent and crew perform equipment maintenance in yard. - Reliance Wireline and Calvary Hot Oiler travel from Grande Prairie to Ft Nelson. Canadian Group cementers travel to Ft Simpson. - Haul and spot on location (2) 63 m³ insulated tanks and garbage bin. Bed truck assist winch tractor on lease access km 45 hill. Winch truck travel back to Norman Wells. Bed truck stay at Colville camp. - End of report for day.</p>



ARO Daily Op Summary

Well Name: MGM NOGHA C-49

Well Header					
API/UWI 300/C-49-6640-12545/01	Surface Legal Location C-49-6640-12545	Field Name Nogha	License # N1934	State/Province NorthWest Territories	Well Configuration Type Deviated
Ground Elevation (m) 354.10	Casing Flange Elevation (m) 354.60	KB-Ground Distance (m) 5.30	KB-Casing Flange Distance (m) 4.80	Spud Date 1/25/2003	Rig Release Date 3/13/2003

Daily Operations

Start Date	Summary
2/9/2026	<p>HSE Summary : No incidents, accidents or spills. Contractors appear fit for duty.</p> <p>Operations Summary :</p> <ul style="list-style-type: none"> - All contractors maintain travel management notifications to WSS at start and end of day. - PWS 891 prepare and load equipment on transport vehicles in Norman Wells. - Reliance Wireline, Calvary Hot Oiler, Troyer Vac, Troyer Fluid hauler and Stream Flo wellhead crew travel to Ft Simpson. Canadian cementers travel to Norman Wells. - End of report for day.
2/10/2026	<p>HSE Summary : No incidents, accidents or spills. Contractors appear fit for duty.</p> <p>Operations Summary :</p> <ul style="list-style-type: none"> - All contractors maintain travel management notifications to WSS at start and end of day. - PWS 891 and support equipment travel from Norman Wells to Colville Camp. Unload rig off wheeler. Canadian Group cementers travel from Norman Wells to Colville camp. - Reliance Wireline, Calvary Hot Oiler, and Stream Flo wellhead crew travel from Ft Simpson to Norman Wells. - Troyer Vac unit and Troyer Fluid hauler travel to Tullita. Slow travel due to waiting for other spun out trucks on Pipeline Hill. - End of report for day.
2/11/2026	<p>HSE Summary : No incidents, accidents or spills. Contractors appear fit for duty.</p> <p>Operations Summary :</p> <ul style="list-style-type: none"> - All contractors maintain travel management notifications to WSS at start and end of day. - Reliance Wireline, Calvary Hot Oiler, and Stream Flo wellhead crew travel from Norman Wells to Coleville Camp. Troyer Vac unit and Troyer Fluid hauler travel from Tullita to Colville Camp. - Camp Temperature -51 C with -63 C wind chill. Rig motor stopped in night. Heat rig motor and bed truck. Able to start bed truck. Rig motor started but sounds like a bent push rod in motor. - Unload PWS 891 from wheeler. Construction supply heater to tarp in rig motor for repairs. Inspection shows damage to piston # 3. Unable to field repair motor. - Issues with wheeler trailer. Clear frozen air lines. Release wheeler. Haul to site and spot rig doghouse and support material skid. Release (2) winch tractors with trailers. Bed truck travel to camp. - Construction mechanic start forced air heater. Heat doghouse accumulator, BOP accumulator hoses and generator for night. - End report for day.
2/12/2026	<p>HSE Summary : No incidents, accidents or spills. Contractors appear fit for duty.</p> <p>Operations Summary :</p> <ul style="list-style-type: none"> - All contractors maintain travel management notifications to WSS at start and end of day. - Rig in 80 HP boiler and lines to wellhead. Rig in pump and return lines to wellhead. - Heat wellhead with forced air heater. SITP = 0 KPa. SICP = 0 KPa. Rig in Lubricator to remove Cameron BPV. Pressure test lubricator to 21 MPa against lower 63.5 mm Master Valve. Held. Bleed down pressure to 2.0 MPa. Run pull rod tool 0.30 m past tubing hanger. No signs of BPV in extended neck tubing hanger. Rig down lubricator. Rig out and release wellhead crew. - Pump 200 L x methanol into tubing. Pressure up tubing and wellbore to 13.5 MPa. Pressure drop to 12.5 MPa in 2 minutes. Pressure steady at 12.5 MPa for 10 minutes. SICP 0 KPa. No leak off. Bleed off pressure. - Wrap and heat for night 34.5 MPa BOP and 21.0 MPa / 34.5 MPa wellhead. - Spot combo wire line unit on site. Perform inspection of unit and equipment for future operations. - Clean and secure wellhead, site and equipment. - Boiler hand on rig watch for night. - End report for day.



ARO Daily Op Summary

Well Name: MGM NOGHA C-49

Well Header					
API/UWI 300/C-49-6640-12545/01	Surface Legal Location C-49-6640-12545	Field Name Nogha	License # N1934	State/Province NorthWest Territories	Well Configuration Type Deviated
Ground Elevation (m) 354.10	Casing Flange Elevation (m) 354.60	KB-Ground Distance (m) 5.30	KB-Casing Flange Distance (m) 4.80	Spud Date 1/25/2003	Rig Release Date 3/13/2003

Daily Operations

Start Date	Summary
2/13/2026	<p>HSE Summary : No incidents, accidents or spills. Contractors appear fit for duty.</p> <p>Operations Summary :</p> <ul style="list-style-type: none"> - All contractors maintain travel management notifications to WSS at start and end of day. - Run remote accumulator stand accumulator lines. Remove and inspect BOP blind and tubing rams. Function Test 34.5 - Class III BOP. Stop recharge pump. Normal operating pressure 20.5 MPa. Close blind rams 5 seconds - pressure drop to 18.5 MPa. Close pipe rams 5 seconds - pressure drop to 17.0 MPa. Closes annular bag 25 sec - pressure drop to 12.0 MPa. Recharge system to 20.5 MPa in 55 seconds. - Stump pressure test blind rams and pipe rams to 1.4 MPa (low) and 21 MPa (high). Held each test 10 minutes. No leaks. Stump pressure test annular bag 1.4 MPa (low) and 7.0 Mpa (high). held each test 10 minutes. No leaks. - Continue to inspect equipment as rigged in for compliance with MGM Energy, contractor and industry rules and regulations. Load and travel PWS # 891 back to Norman Wells. - Spread gravel around well center. Spot 8' x 40' stabbing pipe mat. - Clean and secure wellhead. Bank boiler for night. - End of day operations.
2/14/2026	<p>HSE Summary : No incidents, accidents or spills. Contractors appear fit for duty.</p> <p>Operations Summary :</p> <ul style="list-style-type: none"> - All contractors maintain travel management notifications to WSS at start and end of day. - Rig crew travel to Norman Wells for days off. - Load and travel PWS # 891 back to Norman Wells. - Hot oiler heat up 17 m³ of 20% KCL to 70°C - 20% KCL in water tanker. Allow water to melt ice on walls of water tanker. - Boiler hand inspect and fuel up site generator and boiler. Ensure equipment operational for 24 hrs. - Load and start travel PWS # 834 to site from Grande Prairie. - Clean and secure wellhead. Bank boiler for night. - End of day operations.
2/15/2026	<p>HSE Summary : No incidents, accidents or spills. Contractors appear fit for duty.</p> <p>Operations Summary :</p> <ul style="list-style-type: none"> - All contractors maintain travel management notifications to WSS at start and end of day. - Transfer water from water tanker to 63 m³ tank on site. Hot oiler heat up 17 m³ of 20% KCL to 80°C - 20% KCL. - HRN winch tractor travel to Colville to haul back Troyer tanker. - Boiler hand inspect and fuel up site generator and boiler. Ensure equipment operational for 24 hrs. - Travel PWS # 834 to to Ft Simpson. - Clean and secure wellhead. Bank boiler for night. - End of day operations.
2/16/2026	<p>HSE Summary : No incidents, accidents or spills. Contractors appear fit for duty.</p> <p>Operations Summary :</p> <ul style="list-style-type: none"> - All contractors maintain travel management notifications to WSS at start and end of day. - Boiler hand inspect and fuel up site generator and boiler. Ensure equipment operational for 24 hrs. - Travel PWS # 834 from Ft Simpson to Delene Junction. - Clean and secure wellhead. Bank boiler for night. - End of day operations.
2/17/2026	<p>HSE Summary : No incidents, accidents or spills. Contractors appear fit for duty.</p> <p>Operations Summary :</p> <ul style="list-style-type: none"> - All contractors maintain travel management notifications to WSS at start and end of day. - Boiler hand inspect and fuel up site generator and boiler. Ensure equipment operational for 24 hrs. - Travel PWS # 834 from Delene Junction to Norman Wells. - Clean and secure wellhead. Bank boiler for night. - End of day operations.



ARO Daily Op Summary

Well Name: MGM NOGHA C-49

Well Header					
API/UWI 300/C-49-6640-12545/01	Surface Legal Location C-49-6640-12545	Field Name Nogha	License # N1934	State/Province NorthWest Territories	Well Configuration Type Deviated
Ground Elevation (m) 354.10	Casing Flange Elevation (m) 354.60	KB-Ground Distance (m) 5.30	KB-Casing Flange Distance (m) 4.80	Spud Date 1/25/2003	Rig Release Date 3/13/2003

Daily Operations

Start Date	Summary
2/18/2026	<p>HSE Summary : No incidents, accidents or spills. Contractors appear fit for duty.</p> <p>Operations Summary : - All contractors maintain travel management notifications to WSS at start and end of day. - Boiler hand inspect and fuel up site generator and boiler. Ensure equipment operational for 24 hrs. - Travel PWS # 834 from Norman Wells to Colville Camp. - Clean and secure wellhead, site and equipment. - Boiler hand on rig watch for night. - End of day operations.</p>
2/19/2026	<p>HSE Summary : No incidents, accidents or spills. Contractors appear fit for duty.</p> <p>Operations Summary : - All contractors maintain travel management notifications to WSS at start and end of day. - Boiler hand maintain heat on wellhead and fluids. Ensure equipment operational for 24 hrs. - Travel PWS # 834 from Colville Camp to site. (2) Bed trucks assist towing rig and derrick up Km #45 hill. - Start PWS Rig # 834 on site and off load from wheeler. (2) Bed trucks use Gin-Poles to hoist and install derrick on to carrier. Connect raise ram to derrick. Position rig at wellhead. Install lights on derrick. Un-secure support lines on derrick. Install drill line drum on carrier. Release (2) bed trucks and (2) tractors from site. - Clean and secure wellhead, site and equipment. - Bank boiler for night. - End of day operations.</p>
2/20/2026	<p>HSE Summary : No incidents, accidents or spills. Contractors appear fit for duty.</p> <p>Operations Summary : - All contractors maintain travel management notifications to WSS at start and end of day. - Boiler hand maintain heat on wellhead and fluids. Ensure equipment operational for 24 hrs. - Connect hydraulic, air, winch line and drill line to derrick. Hookup weight indicator. - Remove 21.0 MPa x 34.5 MPa Upper Wellhead assembly with Dual 65 mm - 34.5 MPa Master Valves. - Install 73 mm Pup Joint with 34.5 MPa Stab Valve into tubing hanger. Strip on Class III - 34.5 MPa BOP on to 21 MPa Tubing Head. Rig in tubing handling equipment. - Pressure test wellhead connection and tubing rams to 1.4 MPa (low) and 21 MPa (high). Held each test 10 minutes. Rotate 24 turns to lock tubing rams. - Rig in combo wireline unit. Tie new 3.81 mm SS line rope socket. Inspect packoff and tool string. Rig in wireline 34.5 MPa BOP onto 34.5 MPa Work Valve. Purge lubricator prior and after each run with N2 to control well gas and fire triangle. - Run 55.1 mm Gauge Ring. Tag obstruction 16 mKB. Pull Gauge Ring. Pressure up lubricator, A-3 Plug and 16 mKB x 73 mm tubing with 50/50 methanol to 15.0 MPa. Run Kobe Punch Tool. Break Kobe Pin. Pressure drop to 800 KPa in 1 minute. Monitor well 5 minutes. Pressure stable at 800 KPa. Pull tools. Run 2.5" JUC Pull Tool. Latch and pull Slip Stop. Tubing pressure 800 KPa. Run 2.5" JUC pull tool. Latch and spang free A-3 Plug. Tubing pressure climb to 12600 KPa. Pull A-3 Plug. No missing element on A-3 Plug. Submit completed Field Risk Assessment to OROGO. - Pump 0.10 m³ - 50/50 methanol mixture down tubing to winterize. - Lay down wireline lubricator and 34.5 MPa BOP. Secure wireline unit on site for night. - Winterize and secure wellhead site and equipment. - End of day operations.</p>



ARO Daily Op Summary

Well Name: MGM NOGHA C-49

Well Header					
API/UWI 300/C-49-6640-12545/01	Surface Legal Location C-49-6640-12545	Field Name Nogha	License # N1934	State/Province NorthWest Territories	Well Configuration Type Deviated
Ground Elevation (m) 354.10	Casing Flange Elevation (m) 354.60	KB-Ground Distance (m) 5.30	KB-Casing Flange Distance (m) 4.80	Spud Date 1/25/2003	Rig Release Date 3/13/2003

Daily Operations	
Start Date	Summary

2/21/2026	<p>HSE Summary : No incidents, accidents or spills. Contractors appear fit for duty.</p> <p>Operations Summary :</p> <ul style="list-style-type: none"> - Boiler hand maintain heat on wellhead and fluids over night. - Allow time for equipment hydraulics to warm up to working temperatures. - Tie new 3.81 mm SS line rope socket. Inspect packoff and tool string. Rig in wireline 34.5 MPa BOP onto 34.5 MPa Work Valve. Purge lubricator prior and after each run with N2 to control well gas and fire triangle. - Run 63 mm Nipple Brush. Tag obstruction 1333.6 mKB. Pull 63 mm Nipple Brush. Run 59 mm Gauge Ring to 1333.6 mKB to confirm tag depth of Nipple Brush. Pull tool string. SITP 13,316 KPa. No signs fluid in tubing. - Run and set 0.30 m x A-3 Tubing Plug 1333.3 mKB (top). This is right on top of obstruction at 1333.6 mKB. Pull setting tool. Run and set 0.30 m x Slip Stop at 1333.0 mKB (top). This is right on top of A-3 Plug at 1333.3 mKB. Pull setting tool. - Lay down lubricator. Rig down wireline 34.5 MPa BOP and slick line equipment. Change combo unit for eline operations. - SITP 13,316 KPa. Bleed off tubing to 0 KPa. Gas return only to surface. Monitor pressure 15 minutes. Tubing pressure 0 KPa. Good negative test. - Pump 3.5 m³ fresh (non-saline) water to fill tubing. Pressure test 73 mm tubing and A-3 Plug to 7.0 MPa. Held pressure 10 minutes. No bleed off. Good test. - Pump 18.5 m³ fresh (non-saline) water to fill casing. Pressure test 177.8 mm casing and Halliburton Packer to 7.1 MPa. Held pressure 10 minutes. No bleed off. Good test. - Winterize and secure wellhead site and equipment. - End of day operations. - Boiler hand maintain heat on fluids and wellhead.
-----------	--

2/22/2026	<p>HSE Summary : No incidents, accidents or spills. Contractors appear fit for duty.</p> <p>Operations Summary :</p> <ul style="list-style-type: none"> - Pickup tubing string and set in 4,000 daN tension. Rig in wireline 34.5 MPa BOP onto 34.5 MPa Work Valve. Purge lubricator prior and after each run with N2 to control well gas and fire triangle. Secure on site communications. NOTE: Extra time required to heat up hydraulics, pump lines, return lines and hydraulics pumps. - Run CCL / 53 mm Jet Cutter. Tag obstruction 1090 mKB. Pull tool string. Brownish water on tools. Run CCL / Extended 46.3 mm Jet Cutter. Tag obstruction 1090 mKB. Pull tool string. - Run CCL / (2) Weight Bar, Jars and 44 mm - 3.1 m Stroke Bailer. Tag obstruction 1090 mKB. Unable to work thru. Pull tool string. No debris in stroke bailer and no markings on tool string. - Rig down lubricator and wireline sheave. Lower tubing string and land tubing hanger in wellhead. Rig in lubricator and wireline sheave. - Run CCL / (2) Weight Bar, Jars and 44 mm - 3.1 m Stroke Bailer. Tag obstruction 1090 mKB. Work and push obstruction to 1109.0 mKB. Pull tool string. - Run CCL / (3) Weight Bars and 55 mm Gauge Ring. Work thru obstruction 1109 mKB. Run 55 mm Gauge Ring to 1333 mKB. No signs of obstruction. Pull CCL / 55 mm Gauge Ring. - Rig down lubricator and wireline sheave. Pickup tubing string and set in 5,000 daN tension. Rig in lubricator and wireline sheave. - Run CCL / 53 mm Jet Cutter. Cut 73 mm - 9.67 kg/m L-80 Tubing String 1331 mKB. Positive reaction at surface. Pull CCL / (fired) Jet Cutter. - Rig down lubricator and wireline sheave. Able to freely pickup tubing string. Winterize and secure wellhead site and equipment. - End of day operations. - Boiler hand maintain heat on fluids and wellhead.
-----------	--

--	--



ARO Daily Op Summary

Well Name: MGM NOGHA C-49

Well Header					
API/UWI 300/C-49-6640-12545/01	Surface Legal Location C-49-6640-12545	Field Name Nogha	License # N1934	State/Province NorthWest Territories	Well Configuration Type Deviated
Ground Elevation (m) 354.10	Casing Flange Elevation (m) 354.60	KB-Ground Distance (m) 5.30	KB-Casing Flange Distance (m) 4.80	Spud Date 1/25/2003	Rig Release Date 3/13/2003

Daily Operations

Start Date	Summary
2/23/2026	<p>HSE Summary : No incidents, accidents or spills. Contractors appear fit for duty.</p> <p>Operations Summary : - Pump down casing 10.0 m³ fresh (non-saline) water at 500 L/min x 1.0 MPa. Return 3.5 m³ fresh (non-saline) water, 3.0 m³ produced water and 3.5 m³ fresh (non-saline) water. Wellbore changed to fresh (non-saline) water. - Pull and lay down (138) Joints Tubing 73 mm 9.67 kg/m, (2) Pup Joints Tubing 73 mm - 3.1 m L-80 and (1) Cut Pup Joint Tubing 73 mm x 0.60 m L-80. - Rig in wireline 34.5 MPa BOP and sheave. Run CCL / Weatherford Setting Tool and Weatherford 10K - 178 mm Permanent Bridge Plug. Set at 1330.5 mKB x 14:00 hrs. Pull CCL / Setting Tool. Rig down wireline 34.5 MPa BOP, sheave and combo unit. - Pump 2.0 m³ fresh (non-saline) water to pressure up casing to 7.0 MPa. Held 10 minutes. No leaks. - Run (1) Mule Shoed Pup Joint 73 mm x 1.24 m L-80, (2) Pup Joints 73 mm x 3.1 m L-80 and (138) Joints Tubing 73 mm L-80. Tag top of Weatherford PBP 1330.5 mKB. Position tubing bottom 1330.2 mKB. - Rig in cement unit pump line to tubing. Mix 0.574 L x 25° C fresh non saline water with 9 kg CSS.CFL-1 (friction reducer), 2.6 kg/m³DF-1 (anti-foam), 5 kg CSS-LTR (cement retarder) and 1300 kg Class "G" Cement. Slurry volume 1.0 m3. Mix time 4.0 hrs. Density 1900 kg/m3. Obtain cement sample. - Pump 1.0 m³ cement slurry into tubing. Maintain 1.0 MPa annulus back pressure. Forward circulate 3.9 m³ fresh (non saline) water at 250 L/min x 1.1 MPa. Stop pump. Circulate cement plug 1330.5 mKB to 1279.5 mKB x 18:15 hours. - Slowly pull and lay down 7 = Joints Tubing 73 mm L-80. Position tubing bottom 1264 mKB. - Backwash circulate 4.0 m³ fresh non saline water to ensure tubing clear. Slight grey color in water. - Winterize cap and secure wellhead. End day for rig crew. - Boiler hand on site to maintain heat to wellhead. - End of report for day.</p>
2/24/2026	<p>HSE Summary : No incidents, accidents or spills. Contractors appear fit for duty.</p> <p>Operations Summary : - Run in (2) Joints Tubing 73 mm L-80. Able to set 1,900 daN string weight on cement at 1280 mKB. - Pull and lay down (138) Joints Tubing 73 mm 9.67 kg/m, (2) Pup Joints Tubing 73 mm - 3.1 m L-80 and (1) Cut Pup Joint Tubing 73 mm x 0.60 m L-80. - Pump 1.0 m³ fresh (non-saline) water into casing. Estimated fluid level 40 mKB. - Rig down 34.5 MPa x Class III BOP and tubing handling equipment. - Install Upper Wellhead 34.5 MPa assembly with Dual 34.5 MPa Master Valves on Tubing Head. - Clean and secure all outlets on wellhead. - Rig down PWS # 834 and support equipment and rentals. - Load and travel support equipment and rentals to 300/M-17-6640-12545/02. - Boiler hand on site for site and rig watch. - End of report for day.</p>
2/25/2026	<p>HSE Summary : No incidents, accidents or spills. Contractors appear fit for duty.</p> <p>Operations Summary : - Finish rigging out PWS # 834 rig and support equipment. Rig down rentals. - Travel PWS # 834, rentals and support equipment to MGM Energy 300/M-17-6640-12545/02. - Clean and secure site. - End of report for day</p>



ARO Daily Op Summary

Well Name: MGM NOGHA C-49

Well Header					
API/UWI 300/C-49-6640-12545/01	Surface Legal Location C-49-6640-12545	Field Name Nogha	License # N1934	State/Province NorthWest Territories	Well Configuration Type Deviated
Ground Elevation (m) 354.10	Casing Flange Elevation (m) 354.60	KB-Ground Distance (m) 5.30	KB-Casing Flange Distance (m) 4.80	Spud Date 1/25/2003	Rig Release Date 3/13/2003

Daily Operations

Start Date	Summary
3/5/2026	<p>HSE Summary: No incidents, accidents or spills. Contractor appear fit for duty.</p> <p>Operations Summary:</p> <ul style="list-style-type: none"> - No visible bubbles around wellhead. Swept area and around wellhead for LEL. None detected. Test Production Casing and Surface Casing for LEL. None detected. Confirm no existence of underground lines near well center. - Track hoe dig bell hole around wellhead to depth of 3.0 m. Ensure proper slopping and stairway exit. Ensure spoil pile has proper spacing away from bell hole. Stantech field representative obtain wall and base samples. - Cut away 1.5 m of 339.7 mm conductor at 7.50 mKB. There is cement between conductor and surface casing. Cut window in 244.5 mm Surface Casing and 177.8 mm Production Casing. There is no cement between between Surface Casing and Production Casing at surface. Cut 2.0 m of 177.8 mm Production Casing at 7.3 mKB. Cut 2.1 m of Surface Casing at 7.4 mKB. - Remove wellhead from bell hole. Stitch (vent) weld 6.3 mm plate on top of Production Casing and Surface Casing. Weld write N 1934 on 177.8 mm Production Casing cap. - Weld write on orange tombstone sign the following: WID # 1934. MGM Energy. Emergency # 1-866-362-1138. NAD 83. Lat: 66° 38' 5" N. Long: 125° 53' 35" W. Weld sign to 73 mm x 4.0 m cut joint tubing. Sign will be installed 1.0 m North of well center during back fill operations. - Construction haul out bell hole dirt. Wait on ground sampling analysis from around wellhead to determine back fill operations. - Secure bell hole - End report for day.
3/7/2026	<p>HSE Summary: No incidents, accidents or spills. Contractor appear fit for duty.</p> <p>Operations Summary:</p> <ul style="list-style-type: none"> - Back fill and slope bell hole with clean dirt. - Install 1.0 m North of well center a 73 mm x 4.0 m orange pole orange. Weld tombstone sign on the orange pole. - Tombstone sign reads : WID # 1934. MGM Energy. Emergency # 1-866-362-1138. NAD 83. Lat: 66° 38' 5" N. Long: 125° 53' 35" W. - Job completed. <p>NOTE: Final costs to be adjusted upon receiving them.</p>



1934

MGM Energy

866-362-1138

MGM NOGHA C-49

66°38'5"N 125°53'35"W

300-C49-6640-12545/

Wid 1934 NAD83 Mar/26



Tubing and Rods (Schematic)

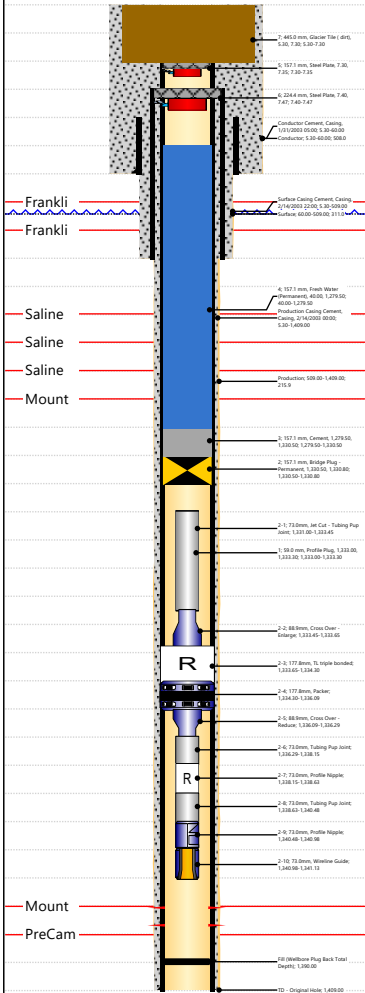
Paramount
resources Ltd.

Well Name: **MGM NOGHA C-49**

API/UWI 300/C-49-6640-12545/01	Surface Legal Location C-49-6640-12545	License # N1934	Field Name Nogha	State/Province NorthWest Territories
Well Configuration Type Deviated	Original KB Elevation (m) 359.40	KB-Ground Distance (m) 5.30	KB-Casing Flange Distance (m) 4.80	KB-Tubing Head Distance (m) 4.30

Original Hole [Deviated] [Drilling - original, 1/22/2003]

Vertical schematic (actual)



Other In Hole

Description Steel Plate		OD (mm) 224.4	Top Depth (mKB) 7.40	Bottom Depth (mKB) 7.47	Run Date 3/5/2026 16:31
Comment stitch welded steel plate					
Description Glacier Tile (dirt)		OD (mm) 445.0	Top Depth (mKB) 5.30	Bottom Depth (mKB) 7.30	Run Date 3/5/2026 16:32
Comment Glacier Tile (dirt)					
Cement Stages					
Cementing Start Date 1/31/2003	String Conductor, 60.00mKB	Description Conductor Cement	Objective		
Top Depth (mKB) 5.30	Top Depth(TVD) (mKB)	Bottom Depth (mKB) 60.00	Bottom Depth (TVD) (mKB)		
Cementing Start Date 2/14/2003	String Production, 1,409.00mKB	Description Production Casing Cement	Objective		
Top Depth (mKB) 5.30	Top Depth(TVD) (mKB)	Bottom Depth (mKB) 1,409.00	Bottom Depth (TVD) (mKB) 1,478.24		
Cementing Start Date 2/14/2003	String Surface, 509.00mKB	Description Surface Casing Cement	Objective		
Top Depth (mKB) 5.30	Top Depth(TVD) (mKB)	Bottom Depth (mKB) 509.00	Bottom Depth (TVD) (mKB) 509.00		