



Suncor Energy Inc.  
P.O. BOX 2844  
150 - 6<sup>th</sup> Avenue SW  
Calgary, AB T2P 3E3

July 2, 2025

Pauline de Jong, Executive Director, OROGO  
Office of the Regulator of Oil and Gas Operations  
Government of the Northwest Territories  
4th Floor Northwest Tower  
5201 – 50th Avenue Yellowknife NT  
X1A 3S9

Email: OROGO@gov.nt.ca

Dear Mrs. de Jong

Re: Well Operation Reporting for **SUNCOR et al TWEED LAKE A-67 Permit # 1555**

Suncor underwent well operations on A-67 to downhole abandoned the well as per the approved program by OROGO. The downhole operations were from May 29 to June 11, 2025. The operations consisted of running and setting a bridge plug into the well at a depth of 705.0 mKB. The bridge plug was pressure tested to 7 MPa for 15 minutes. There was no change in the pressure over that time. The inhibited fluid was swabbed out of the wellbore and fresh potable water was pumped back into the wellbore.

The cutting a capping operations were conducted on June 17, 2025. The wellhead was cut off using hydrojetting and a vented cap was placed onto the cut casing stub as per OROGO regulations. The hole was back filled.

During any of the operation there were no problems encountered.

Yours Sincerely,

**SUNCOR ENERGY INC.**

A handwritten signature in black ink, appearing to read "Greg Heffel".

Greg Heffel, P. Eng.  
Specialist, Completions



Suncor Energy Inc.  
P.O. BOX 2844  
150 - 6<sup>th</sup> Avenue SW  
Calgary, AB T2P 3E3

July 7, 2025

Pauline de Jong, Executive Director, OROGO  
Office of the Regulator of Oil and Gas Operations  
Government of the Northwest Territories  
4th Floor Northwest Tower  
5201 – 50th Avenue Yellowknife NT  
X1A 3S9

Email: OROGO@gov.nt.ca

Dear Mrs. de Jong

Re: Well Operation Reporting for **SUNCOR et al TWEED LAKE A-67 Permit # 1555**

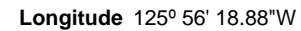
Suncor apologises for the incomplete well operations report for A-67. The bridge plug diagram with technical specification that was used in the operations and the current wellbore diagram have been attached. This should complete the reporting requirements.

Yours Sincerely,

**SUNCOR ENERGY INC.**

A handwritten signature in black ink, appearing to read "Greg Heffel".

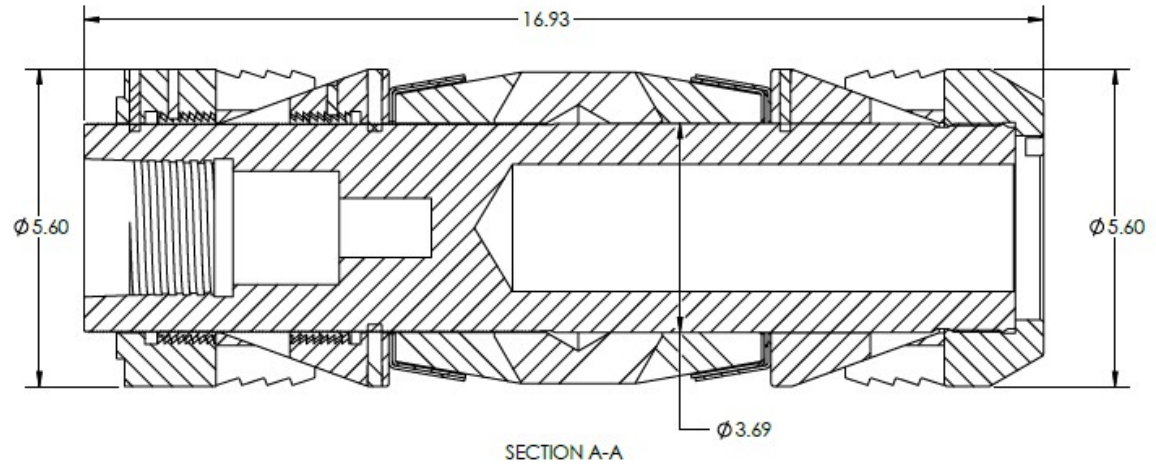
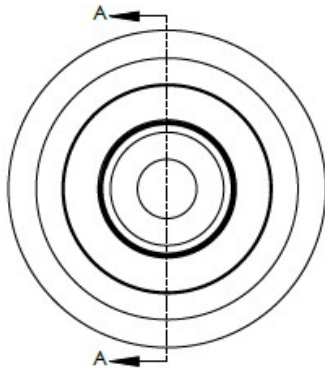
Greg Heffel, P. Eng.  
Specialist, Completions



Elevations										
KB Elevation	397.10 m			KB-THF	5.80 m		TD	1347.0 mKB		
GL Elevation	390.90 m			KB-CF	6.35 m		PBTD	705.0 mKB		
				KB-GL	6.20 m					
Wellhead: Size and Rating										
Manufacturer	mm	x	mm	MPa	x	mm	MPa	x	mm	MPa
x				x			x			
Casing	Hole	Jts	OD	Wt.	Grade	Thread	Top	Bottom		
	mm	#	mm	kg/m						
Conductor	444	5	340	101.2	K-55	ST&C	7.20	61.5	mKB	
Surface	311	62	245	59.5	MN-80	LT&C	7.20	754.0	mKB	
Production	216	132	178	43.2	L-80	LT&C	7.20	1347.0	mKB	
Annular Fluid									m³	
Perforations / Open Hole					Top	Bottom	BHP	BHT	H₂S	CO₂
Date	Formation				(mKB)	(mKB)	(kPa)	(°C)	(%)	(%)
Feb 7/86	Lower Mount Clark (abandoned)				1290.5	1301.0	13,000	12.0		
Feb 19/86	Upper Mount Clark (abandoned)				1278.5	1284.5	13,000	12.0		
Bottomhole Equipment Description (from top down) depth in mKB										
Item	Jts	Description						Length	Top	
3		Bridge plug							705 mKB	
1		Class 'G' cement above bridge plug						9.3	1250.7	
2		178 mm Halliburton EZ-drill permanent bridge plug							1260.0	
Clark 5 mKB										
Clark 0 mKB										
Remarks										
Casing Cut 1.0 m below ground level and removed.										
Wellhead and casing cut off on Jun 17th, 2025.										
Well Status					Prepared by					
Abandon					Greg Heffel					

REVISION HISTORY			
Rev.	Description	Date	Approved
01	Initial Release	2017-11-01	CC

CASING SIZE		CASING WEIGHT		PLUG O.D.		MANDREL O.D.		SETTING MIN.		SETTING MAX.		SETTING FORCE		TEMPERATURE	
in	mm	lbs/ft	kg/m	in	mm	in	mm	in	mm	in	mm	lbs	daN	°C	°F
7	177.8	17-35	25.3-52	5.604	142.40	3.688	93.60	6.004	152.50	6.538	166.07	50,000	22,240	150	300



#### GENERAL TOLERANCES UNO:

FRACTIONAL:  $\pm 1/16$   
 X.....  $\pm 0.1$   
 XX.....  $\pm 0.03$   
 XXX.....  $\pm 0.01$   
 XXXX.....  $\pm 0.005$   
 ANGULAR MATCH:  $\pm 1^\circ$   
 ANGULAR BEND:  $\pm 5^\circ$   
 MIN. SURFACE FINISH: 125 RMS  
 CHAMFERS: 0.015" x 45°  
 DEBURR ALL EDGES

#### MATERIAL:

VARIOUS

#### HEAT TREAT:

N/A

#### FINISH:

N/A

DO NOT SCALE DRAWING  
IF IN DOUBT ... ASK

#### DRAWN:

TL

#### DATE:

2017-11-01

#### PROPRIETARY AND CONFIDENTIAL

THE INFORMATION  
 CONTAINED IN THIS DRAWING  
 IS THE SOLE PROPERTY OF  
 CAVALCANI DOWNHOLE INC.  
 ANY REPRODUCTION IN PART  
 OR AS A WHOLE WITHOUT THE  
 WRITTEN PERMISSION OF  
 OWNER OR AUTHORIZED  
 AGENT IS PROHIBITED.

#### TITLE: ASSEMBLY TECH

#### PROJECT: 7.000 10K BRIDGE PLUG

#### DWG: 700BP10

WGT: 65.67 lbs

SIZ: 11x17

SHEET: 1 of 1

REV: 01