



September 25, 2024

Office of the Regulator of Oil and Gas Operations

PO Box 1320, Yellowknife, NT X1A 2L9

Pauline_DeJong@gov.nt.ca; Mike_Martin@gov.nt.ca; orogo@gov.nt.ca

RE: OROGO Final Operations Report – Cameron M-31 – OA-2018-003-SOG

As you are aware, on January 28, 2020 (the “**Receivership Date**”), the Court of Queen’s Bench of Alberta (the “**Court**”) granted an Order pursuant to section 243 of the Bankruptcy and Insolvency Act, RSC 1985, c. B-3 and section 13(2) of the Judicature Act, RSA 2000, c. J-2, whereby Alvarez and Marsal Canada Inc. (the “**NWT Receiver**”) was appointed Receiver, without security, of all of the current and future assets, undertakings and properties of Strategic Oil and Gas Ltd. and Strategic Transmission Ltd. (collectively, “**Strategic**” or the “**Company**”) situated in the Northwest Territories (the “**NWT Property**”). For further information on the Receivership proceedings, please visit the NWT Receiver’s website at: www.alvarezandmarsal.com/sog.

The NWT Receiver, the Government of the Northwest Territories and ELM Inc. (“**ELM**”) entered into an abandonment agreement for the purposes of completing the abandonment work required by the office of the Regulator of Oil and Gas Operations (“**OROGO**”).

The NWT Receiver respectfully endorses the submission made by ELM to OROGO for the purposes of this final operations report.

Should you have any questions or require further information, please contact the undersigned at dmacrae@alvarezandmarsal.com.

Yours truly,

**Alvarez & Marsal Canada Inc., in its capacity as Receiver of
Strategic Oil & Gas Ltd. and Strategic Transmission Ltd.’s NWT Properties
and not in its personal or corporate capacity**

cc: Christopher Gagnon Christopher@elminc.ca

Encl.

September 25, 2024

Office of the Regulator of Oil and Gas Operations

PO Box 1320
Yellowknife NT, X1A 2L9

By Email: orogo@gov.nt.ca

RE: Final Operations Report – Cameron M-31 (ACW-2022-SOG-M-31-WID 1122 Variation 6)

ELM Inc, acting on behalf of Alvarez & Marsal Canada Inc in their capacity as the receiver for Strategic Oil and Gas Ltd submits the following documents as part of the final reporting for this well.

1. Well Termination Record
2. Morning Reports
3. Final well schematic
4. Pictures from cut and cap operation.

The change of well status form will be sent as a separate attachment.

Should you have any questions or require further information, please contact the undersigned at christopher@elminc.ca

Sincerely,

Christopher Gagnon, P.Eng.

ELM Inc, acting as a consultant to Alvarez & Marsal Canada Inc

WELL TERMINATION RECORD

INSTRUCTIONS:

1. Complete both pages.
2. Send one electronic copy of this form and supporting technical documentation by email to orogo@gov.nt.ca. If you wish to communicate with OROGO in hard copy, please do so using the courier address found at www.orogo.gov.nt.ca.

WELL INFORMATION

Well Name	Strategic HB et al Cameron M-31	Operator	Strategic Oil & Gas Ltd
Well Type	Exploratory Well (if Other, specify _____)	Contractor	Elm Inc
Well Identifier	1122	Current Well Status	Suspended

RELATED LICENCES AND AUTHORIZATIONS

Operating Licence No.	NWT-OL-2014-007	Operations Authorization	OA - 2018-003-SOG
PRA Licence No.	Significant Discovery Licence 8	Approval to Alter Condition of Well	ACW - 2022-SOG-M-31-WID 1122

LOCATION INFORMATION

Coordinates Datum: NAD27 (if Other, please specify _____)

Surface	Lat 60 ° 0 ' 56 "	Long 117 ° 7 ' 22 "
Bottom Hole	Lat 60 ° 0 ' 56 "	Long 117 ° 7 ' 22 "

Region: South Sl Unit M Section 31 Grid 60-10N 117-0W

ACTIVITY INFORMATION

Target Formation(s)	Multiple	Field/Pool(s)	Cameron Hills /
Elevation KB/RT	358.35 m	Ground Level / Seafloor	354.7 m
Spud/Re-entry Date	1 days	Total Depth	1060 m KB
Rig Release Date	September 16, 2024	Total Vertical Depth	1060 m KB

CASING AND CEMENTING PROGRAM

O.D. (mm)	Weight (kg/m)	Grade	Setting Depth (m KB)	Cementing (m ³)
244.5	48.07	H-40	157	10.3
177.8	25.3	H-40	796	15.4
114.3	14.14	J-55	1061.4	5.0

--	--	--	--	--	--	--

PLUGGING PROGRAM

Type of Plug	Interval (m KB)	Felt	Setting Depth (m KB)	Cementing (m ³)
Cement	52.8-89.0	Yes	89	0.72
Cement	89.0-141.6	Yes	141.6	0.9
Cement	209.3-305.8	Yes	305.8	1.0
Cement	306.0-427.5	Yes	427.5	1.0

PERFORATION

Interval (m KB)	Comments
69.5-71.5	Remedial Perf - Squeezed 411 L of cement into perfs. Note plug had to be topped up by circulating additional cement onto previous cement plug.
102.5-104.5	Remedial Perf - Squeezed 20 L of cement into perfs. Had to drill down cement plug to make room for next interval.
291.5-293.5	Remedial Perf - Squeezed 180 L of cement into perfs.
405.5-407.5	Remedial Perf - Minimal cement squeezed into perfs.

OTHER

Lost Circulation/Overpressure Zones	None Encountered
Equipment Left on Site (Describe)	None
Provision for Re-entry (Describe and attach sketch)	Vented Cap 1.2 meters below ground level
Other Downhole Completion/Suspension	Fish, previous abandoned zones from 2023 operations. Refrer to diagram.
Additional Comments	No changes to downhole configuration. Well was cut and capped September 16, 2024.

"I certify that the information provided on this form is true and correct"

Name	Duncan MacRae	Phone	(403)538-7514Ext
Title	Vice President	E-Mail	dmacrae@alvarezandmarsal.com
Operator	Alvarez & Marsal Canada Inc., in its capacity as receiver of Strategic Oil & Gas's NWT Property		
Signature		Date	September 25, 2024
	Responsible Officer of Company		



DAILY REPORT

CLIENT:	Strategic Oil & Gas C/O Alvarez & Marsal	DATE:	September 25, 2024
UWI:	300/M-31 60-10N 117-00W	Report #:	1
PROJECT MANAGER:	Christopher Gagnon	AFE #:	

Proj # / AFE / Job Number:	STRA099	AFE Amount:	\$100,808.95	\$66,266.52
Project Descriptor:	Wellhead Cut and Cap			

Cost Coding	Surface Location	60.015667, -117.122861	AREA	Cameron Hills NWT
	License	1122		

EXECUTIVE SUMMARY:

NWT App: ACW-2022-SOG-M-31-WID1122 Variation 6

Day 1: Mobilize from base to High Level and confirm services for cut and cap.

Day 2: Cut and capped the well 1.2 meters below grade.

Day 3: Demob back to base. Operations Complete



DAILY REPORT

CLIENT:	Strategic Oil & Gas C/O Alvarez & Marsal		DATE :	September 15, 2024	
UWI:	300/M-31 60-10N 117-00W		Report #:	1	
PROJECT MANAGER:	Christopher Gagnon		AFE #:		
PROJECT NUMBER:	STRA099	AFE Amount:	\$100,808.95	% of AFE spent:	5%
Previous Costs to Date:	\$0.00	Current Days Costs:	\$4,884.03	Total Cost to Date:	\$4,884.03

OPERATIONS SUMMARY: Mobilize from base to High Level and confirm services for cut and cap.

SUPERVISION CHARGES

Add new line to ELM CHARGES

SERVICE PROVIDED	Number of units	UNIT	RATE	RESOURCE NAME	Site Supervisor	AMOUNT
Project Supervisor	12.00	hr	\$120.00		John Tattrie	\$1,440.00
Mileage	938.00	km	\$1.25			\$1,172.50
Accommodations (Non Camp)	1.00	At Cost	\$166.59			\$166.59
Meals (Non Camp)	1.00	Day	\$55.00			\$55.00
						\$0.00
SUBTOTAL						\$2,834.09
Management Fee:						\$396.77
ELM TOTAL						\$3,230.86

THIRD PARTY CHARGES

Add new line to THIRD PARTY CHARGES

SERVICE PROVIDED	MAN HOURS	PO#	TICKET #	CONTRACTOR	SUBTOTAL	Est.	AMOUNT
Decals for abandoned well sign			47104870	The Printing House	\$57.65		\$57.65
Crew mob			1010	1205 Industries	\$1,392.50		\$1,392.50
							\$0.00
							\$0.00
							\$0.00
MAN HOURS TOTAL						0.00	
SUBTOTAL							\$1,450.15
Management Fee							\$203.02
THIRD PARTY TOTAL							\$1,653.17

To add a line in text box use "alt enter"

Time	Wellhead Cut and Cap
	Scheduled maintenance crew to assist with project. Picked up cement and loaded welder and generator. Confirmed permission to use open area at Indian Cabins for the helicopter and spoke with helicopter pilot to clarify job scope. Traveled to accommodations at High Level in preparation for kick off in the morning. The next objective is to fly the crew and equipment to M-31 for the cut and cap.



DAILY REPORT

CLIENT:	Strategic Oil & Gas C/O Alvarez & Marsal		DATE :	September 16, 2024	
UWI:	300/M-31 60-10N 117-00W		Report #:	2	
PROJECT MANAGER:	Christopher Gagnon		AFE #:		
PROJECT NUMBER:	STRA099	AFE Amount:	\$100,808.95	% of AFE spent:	62%
Previous Costs to Date:	\$4,884.03	Current Days Costs:	\$57,241.44	Total Cost to Date:	\$62,125.47
OPERATIONS SUMMARY:	Cut and capped the well 1.2 meters below grade.				

SUPERVISION CHARGES

[Add new line to ELM CHARGES](#)

SERVICE PROVIDED	Number of units	UNIT	RATE	RESOURCE NAME	Site Supervisor	AMOUNT
Project Supervisor	14.00	hr	\$120.00		John Tattrie	\$1,680.00
Mileage	350.00	km	\$1.25		John Tattrie	\$437.50
Accommodations (Non Camp)	1.00	At Cost	\$166.59		John Tattrie	\$166.59
Meals (Non Camp)	1.00	Day	\$55.00		John Tattrie	\$55.00
						\$0.00
SUBTOTAL						\$2,339.09
Management Fee:						\$327.47
ELM TOTAL						\$2,666.56

THIRD PARTY CHARGES

[Add new line to THIRD PARTY CHARGES](#)

SERVICE PROVIDED	MAN HOURS	PO#	TICKET #	CONTRACTOR	SUBTOTAL	Est.	AMOUNT
Helicopter	15.00		IN013518	Great Slave Helicopters	\$38,962.70		\$38,962.70
Guardian and helper	28.00			K'at'i'odeeche First Nation	\$2,400.00	✓	\$2,400.00
Excavator/mob/operator	16.00			Pinnacle	\$4,000.00	✓	\$4,000.00
Decom crew member	14.00		1011	1205 Industries	\$2,510.00		\$2,510.00
							\$0.00
MAN HOURS TOTAL					73.00	SUBTOTAL	\$47,872.70
						Management Fee	\$6,702.18
						THIRD PARTY TOTAL	\$54,574.88

To add a line in text box use "alt enter"

Time	Wellhead Cut and Cap
	<p>Traveled from High Level to Indian Cabins. Met with services and had a pre flight safety meeting with the helicopter pilot. The small excavator was slung to the helicopter and transported to the M-31 well site. While waiting for the helicopter, the rest of the supplies were placed on a cargo net. The crew was transported to site so we could start excavating while the helicopter returned to Indian Cabins to retrieve the remaining equipment. We discussed the objectives for the day, then identified the possible hazards at the tailgate meeting. Bubble tested the surface casing vent, no bubbles observed over 10 minutes. The well was opened up to allow it to breathe. Air quality at the open valves was tested with the monitors. The air contained 0% LEL's. Next, the tubing head and wing valves were removed to lighten the wellhead. A bell hole was excavated around the wellhead to a depth of 1.5 meters. The area was very wet so the excavator bailed water from a sump area he created while the decom crew member worked to cut away the conductor barrel and intermediate casing. the cement was at surface and needed to be chipped away. The excavator was tied to the casing bowl with a sling to support the wellhead. A sight window was cut into the surface casing at 1.2 meters below grade to allow access to the production casing. The production casing was cut completely, then the surface casing was almost through, leaving a small tab to hold the casing in place while the crew member exited the bell hole. The wellhead was tipped over to break the small tab, then the small hoe attempted to remove it from the bell hole. The wellhead was still too heavy for the hoe to lift out, so the helicopter was used. The wellhead components were loaded onto the cargo net, then the helicopter took the scrap to our parking area at Indian Cabins. The well bore was cleaned up and prepped for the well cap. The well cap was welded on, then the bell hole filled in by the excavator. Once the area was filled in, the identification sign was placed 1m north of the well bore. Quick set cement was used to anchor the post in place. The excavator and crew were transported back to Indian Cabins. The excavator was demobed back to High Level along with the scrap steel at 6:00 pm. The helicopter and crews also left the area at the same time.</p> <p>Field work for this project is complete. The site is ready for reclamation.</p>



DAILY REPORT

CLIENT:	Strategic Oil & Gas C/O Alvarez & Marsal		DATE :	September 17, 2024	
UWI:	300/M-31 60-10N 117-00W		Report #:	3	
PROJECT MANAGER:	Christopher Gagnon		AFE #:		
PROJECT NUMBER:	STRA099	AFE Amount:	\$100,808.95	% of AFE spent:	66%
Previous Costs to Date:	\$62,125.47	Current Days Costs:	\$4,141.05	Total Cost to Date:	\$66,266.52
OPERATIONS SUMMARY:	Demob back to base. Operations Complete				

SUPERVISION CHARGES

[Add new line to ELM CHARGES](#)

SERVICE PROVIDED	Number of units	UNIT	RATE	RESOURCE NAME	Site Supervisor	AMOUNT
Project Supervisor	11.00	hr	\$120.00		John Tattrie	\$1,320.00
Mileage	938.00	km	\$1.25		John Tattrie	\$1,172.50
Meals (Non Camp)	1.00	Day	\$55.00			\$55.00
						\$0.00
						\$0.00
SUBTOTAL						\$2,547.50
Management Fee:						\$356.65
ELM TOTAL						\$2,904.15

THIRD PARTY CHARGES

[Add new line to THIRD PARTY CHARGES](#)

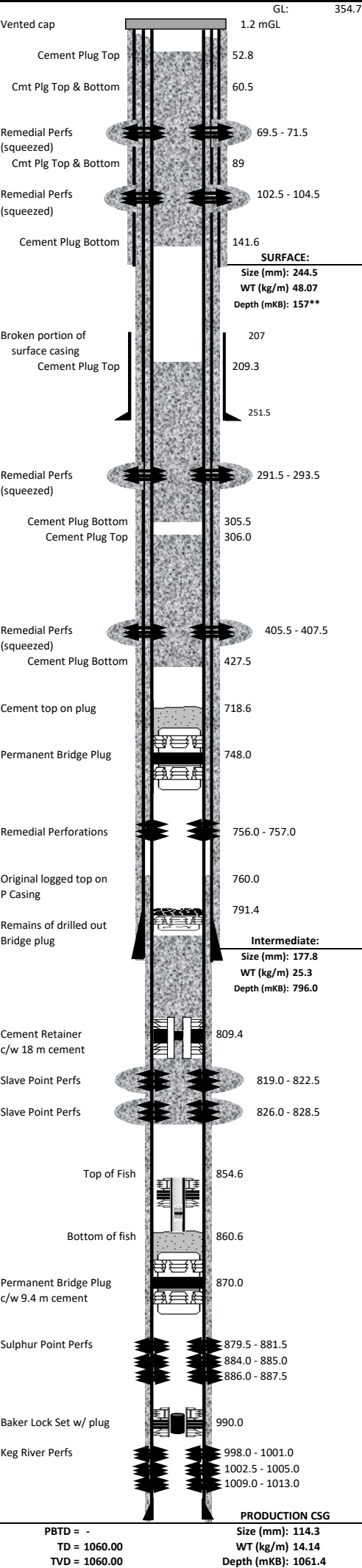
SERVICE PROVIDED	MAN HOURS	PO#	TICKET #	CONTRACTOR	SUBTOTAL	Est.	AMOUNT
Decom crew demob	5.00		1012	1205 Industries	\$1,085.00		\$1,085.00
							\$0.00
							\$0.00
							\$0.00
MAN HOURS TOTAL							5.00
SUBTOTAL							\$1,085.00
Management Fee							\$151.90
THIRD PARTY TOTAL							\$1,236.90

To add a line in text box use "alt enter"

Time	Wellhead Cut and Cap
	Traveled back to base near Red Deer. The decom crew member traveled back to base in Grande Prairie.



FINAL WELL DIAGRAM



GENERAL DETAILS					REV #		1.0		
WELL NAME:		Strategic HB et al Cameron M-31			FIELD:		Cameron Hills		
UWI:		300/M31 60-10N 117-00W			LICENSE:		1122		
SURFACE:					LATITUDE:		60.015813		
COMPANY:		Strategic Oil And Gas Ltd			DRAWN BY:		C. Gagnon		
DEVIATION:		WELL STATUS:					DATE:		
Vertical		Abandoned					25 Sep 2024		
ELEVATIONS & DEPTHS									
KB (mKB)		GL (m)		KB-SCF (m)		KB-GR (m)		BGWP (mKB)	
358.35		354.7				3.65		600.00	
								PBDT (mKB)	
								1060	
								TVD (mKB)	
								1060	
CASING STRINGS									
STRING		SIZE <i>(mm)</i>		WEIGHT <i>(kg/m)</i>		GRADE		CPLG	
Surface:		244.5		48.07		H-40			
Intermediate:		177.8		25.3		H-40			
Production:		114.3		14.14		J-55			
Liner:									
Open Hole:									
CEMENTING									
STRING		DETAIL				Returns <i>(m³)</i>		Log Cmt Top <i>(mKB)</i>	
Surface:		13.5 T Oil Well G + 3% CaCl ₂				1 m ³			
Intermediate:		20.3 T Oil Well G				1.58 m ³			
Production:		6.6 T Oil Well G (Original Cement Job)						760.00	
COMPLETION DATA									
ITEM				DEPTH			STATUS		
Well cut and capped, left with vented cap				1.2 mGL					
Cement Plug (top up the previous cement plug)				52.8 - 60.5					
Cement Plug				60.5 - 89.0					
Remedial Perforations (cement squeezed)				69.5 - 71.5			Abandoned		
Cement Plug (drilled down to current depth to make room)				89.0 - 141.6					
Remedial Perforations (cement squeezed)				102.5 - 104.5			Abandoned		
Cement Plug				209.3 - 305.8					
Remedial Perforations (cement squeezed)				291.5 - 293.5			Abandoned		
Cement Plug				306.0 - 427.5					
Remedial Perforations (cement squeezed)				405.5 - 407.5			Abandoned		

CAMERON M-31

Lat / Lon (GPS: ± 5 m)
60.015662
-117.124290

Bearing: 155° (TN)
Sep 16, 2024 10:38:13

UTM N/E
6653161 m
493070 m
Zone: 11



East view of wellhead

Lat / Lon (GPS: ± 5 m)
60.015643
-117.124300

Bearing: 239° (TN)
Sep 16, 2024 10:38:02

UTM N/E
6653159 m
493070 m
Zone: 11



South view of wellhead

Lat / Lon (GPS: ± 5 m)
60.015649
-117.124321

Bearing: 324° (TN)
Sep 16, 2024 10:37:45

UTM N/E
6653160 m
493068 m
Zone: 11



West view of wellhead

Lat / Lon (GPS: ± 5 m)
60.015649
-117.124304

Bearing: 353° (TN)
Sep 16, 2024 10:37:12

UTM N/E
6653160 m
493069 m
Zone: 11



Confirming wellhead coordinates

CAMERON M-31



Excavating around wellhead



Wellhead removed with helicopter



Vented cap welded onto casing stub

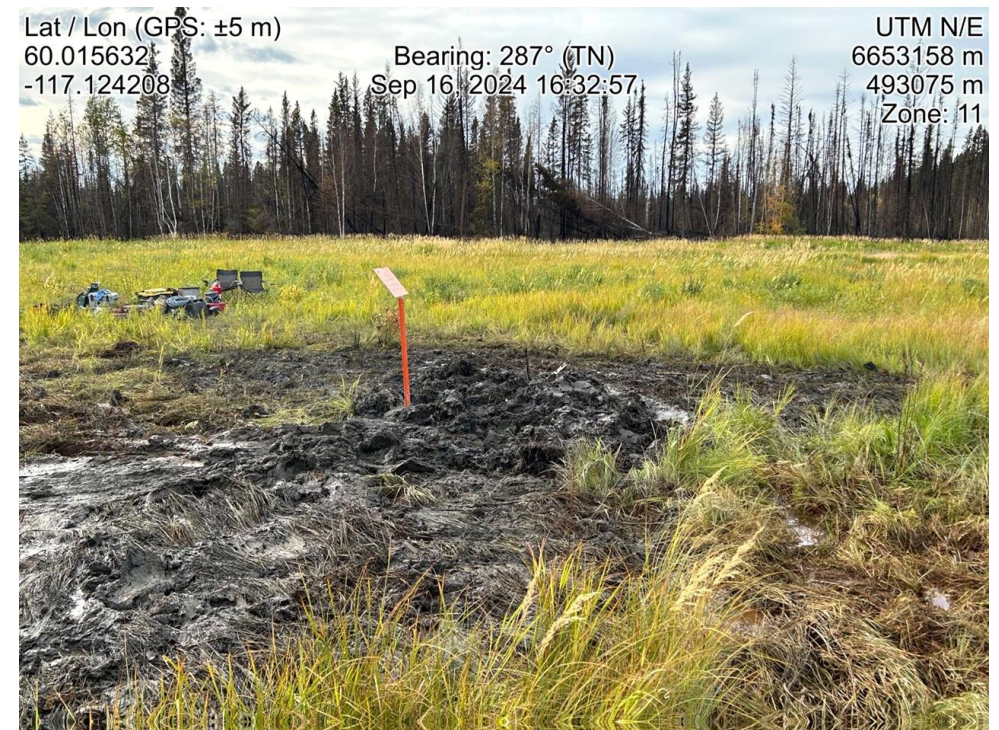


M-31 welded onto the cap

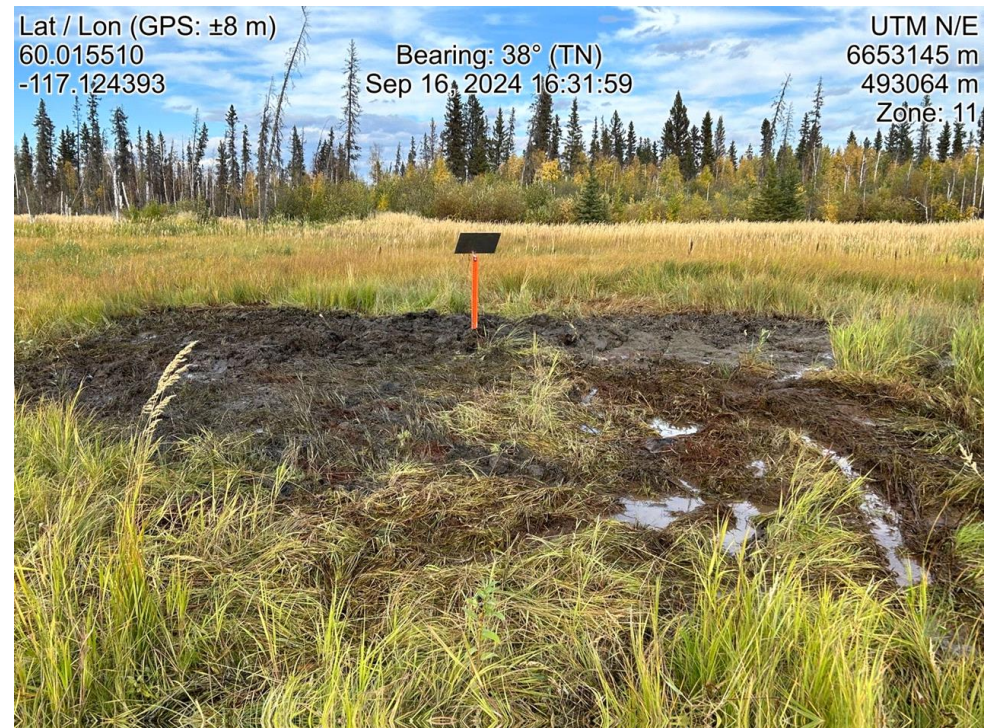
CAMERON M-31



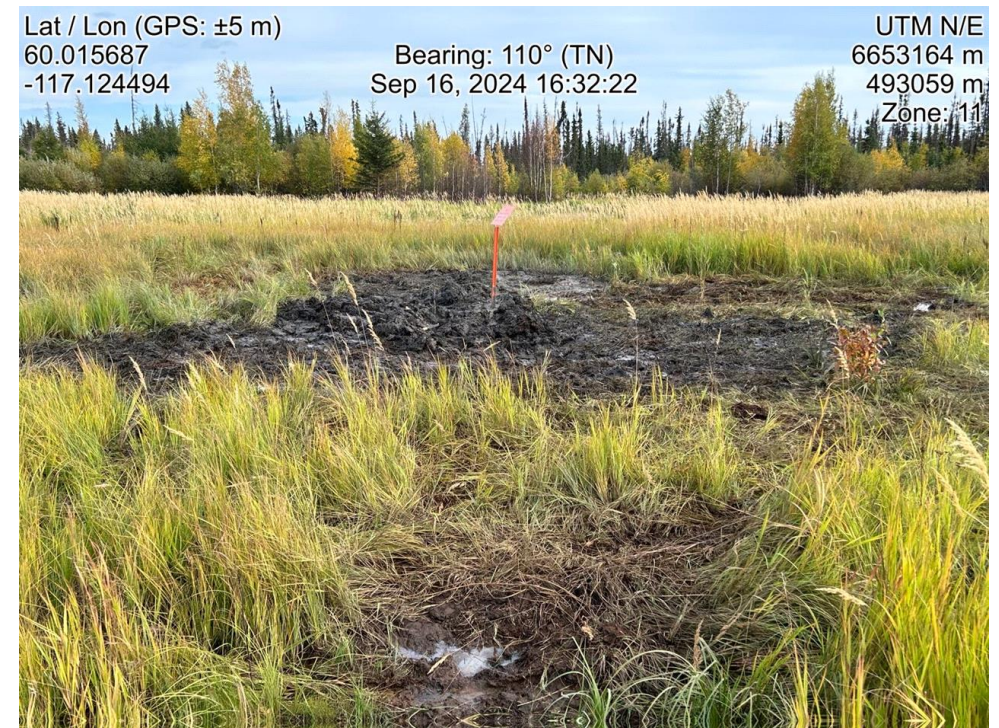
Abandoned well sign installed



West view of backfilled excavation



North view of backfilled excavation



East view of backfilled excavation