



April 21, 2023

**Office of the Regulator of Oil and Gas Operations**

PO Box 1320, Yellowknife, NT X1A 2L9

[Pauline\\_DeJong@gov.nt.ca](mailto:Pauline_DeJong@gov.nt.ca); [Mike\\_Martin@gov.nt.ca](mailto:Mike_Martin@gov.nt.ca); [orogo@gov.nt.ca](mailto:orogo@gov.nt.ca)

**RE: OROGO Final Operations Report – Cameron L-44 – OA-2018-003-SOG**

As you are aware, on January 28, 2020 (the “**Receivership Date**”), the Court of Queen’s Bench of Alberta (the “**Court**”) granted an Order pursuant to section 243 of the Bankruptcy and Insolvency Act, RSC 1985, c. B-3 and section 13(2) of the Judicature Act, RSA 2000, c. J-2, whereby Alvarez and Marsal Canada Inc. (the “**NWT Receiver**”) was appointed Receiver, without security, of all of the current and future assets, undertakings and properties of Strategic Oil and Gas Ltd. and Strategic Transmission Ltd. (collectively, “**Strategic**” or the “**Company**”) situated in the Northwest Territories (the “**NWT Property**”). For further information on the Receivership proceedings, please visit the NWT Receiver’s website at: [www.alvarezandmarsal.com/sog](http://www.alvarezandmarsal.com/sog).

The NWT Receiver, the Government of the Northwest Territories and ELM Inc. (“**ELM**”) entered into an abandonment agreement for the purposes of completing the abandonment work required by the office of the Regulator of Oil and Gas Operations (“**OROGO**”).

The NWT Receiver respectfully endorses the submission made by ELM to OROGO for the purposes of this final operations report.

Should you have any questions or require further information, please contact the undersigned at [dmacrae@alvarezandmarsal.com](mailto:dmacrae@alvarezandmarsal.com).

Yours truly,

**Alvarez & Marsal Canada Inc., in its capacity as Receiver of  
Strategic Oil & Gas Ltd. and Strategic Transmission Ltd.’s NWT Properties  
and not in its personal or corporate capacity**

cc: Christopher Gagnon [Christopher@elminc.ca](mailto:Christopher@elminc.ca)

*Encl.*

April 21, 2023

**Office of the Regulator of Oil and Gas Operations**

PO Box 1320  
Yellowknife NT, X1A 2L9

By Email: [orogo@gov.nt.ca](mailto:orogo@gov.nt.ca)

**RE: Final Operations Report – Cameron L-44 (ACW-2021-SOG-L-44-WID 1743)**

ELM Inc, acting on behalf of Alvarez & Marsal Canada Inc in their capacity as the receiver for Strategic Oil and Gas Ltd submits the following documents as part of the final reporting for this well.

1. Well Termination Record
2. Morning Reports
3. Final well schematic
4. Photographs from cut and cap operation.

The change of well status form will be sent as a separate attachment.

Should you have any questions or require further information, please contact the undersigned at [christopher@elminc.ca](mailto:christopher@elminc.ca)

Sincerely,

Christopher Gagnon, EIT

ELM Inc, acting as a consultant to Alvarez & Marsal Canada Inc

## WELL TERMINATION RECORD

**INSTRUCTIONS:**

1. Complete both pages.
2. Send one electronic copy of this form and supporting technical documentation by email to [orogo@gov.nt.ca](mailto:orogo@gov.nt.ca). If you wish to communicate with OROGO in hard copy, please do so using the courier address found at [www.orogo.gov.nt.ca](http://www.orogo.gov.nt.ca).

**WELL INFORMATION**

Well Name	Strategic et al Cameron L-44	Operator	Strategic Oil & Gas Ltd
Well Type	Exploratory Well (if Other, specify _____)	Contractor	Elm Inc
Well Identifier	1743	Current Well Status	Abandoned

**RELATED LICENCES AND AUTHORIZATIONS**

Operating Licence No.	NWT-OL-2014-007	Operations Authorization	OA - 2018-003-SOG
PRA Licence No.	Significant Discovery Lice 109	Approval to Alter Condition of Well	ACW - 2022-SOG-L-44-WID 1743

**LOCATION INFORMATION**

**Coordinates** Datum: NAD83 (if Other, please specify \_\_\_\_\_)

Surface	Lat 60 ° 3 ' 31 "	Long 117 ° 39 ' 3 "
Bottom Hole	Lat 60 ° 3 ' 31 "	Long 117 ° 39 ' 3 "

Region: South Sl Unit L Section 44 Grid 60-10N 117-30W

**ACTIVITY INFORMATION**

Target Formation(s)	Multiple	Field/Pool(s)	Cameron Hills /
Elevation KB/RT	749.1 m	Ground Level / Seafloor	745.5 m
Spud/Re-entry Date	20 days	Total Depth	1634.0 m KB
Rig Release Date	March 18, 2023	Total Vertical Depth	1634.0 m KB

**CASING AND CEMENTING PROGRAM**

O.D. (mm)	Weight (kg/m)	Grade	Setting Depth (m KB)	Cementing (m³)
244.5	53.57	J-55	389.2	22.8
139.7	23.07	IK-55	1634	103.6

--	--	--	--	--	--	--

**PLUGGING PROGRAM**

Type of Plug	Interval (m KB)	Felt	Setting Depth (m KB)	Cementing (m <sup>3</sup> )
Bridge	1502.9-1523.0	No	1523.0	0.25
Bridge	1476.9-1479.0	No	1479.0	0.25
Bridge	1398.9-1419.0	No	1419.0	0.25
Bridge	1344.9-1365.0	No	1365.0	0.25

**PERFORATION**

Interval (m KB)	Comments
1529.0-1531.0	Keg River - Abandoned
1499.0-1501.0	Muskeg - Abandoned
1425.5-1433.0	Sulphur Point - Abandoned
1371.5-1390.0	Slave Point - Abandoned


**OTHER**

Lost Circulation/Overpressure Zones	
Equipment Left on Site (Describe)	None
Provision for Re-entry (Describe and attach sketch)	Vented cap 2 meters below ground level
Other Downhole Completion/Suspension	Bridge plug capped w/ 0.25 m3 cement, plug @ 1345.0. (1324.9 - 1345.0) to abandon the leaking stage tool / external casing packer
Additional Comments	Shallow casing failure at 30 to 42 mKB. OROGO granted permission to leave as is

**"I certify that the information provided on this form is true and correct"**

Name	Duncan MacRae	Phone	( 403)538-7514Ext
Title	Vice President	E-Mail	dmacrae@alvarezandmarsal.com
Operator	Alvarez & Marsal Canada Inc., in its capacity as receiver of Strategic Oil & Gas's NWT Property		
Signature	 Responsible Officer of Company	Date	April 21, 2023

**NOTE:** This sheet is protected. Unprotect the sheet to make changes and protect once complete.

		<b>DAILY REPORT</b>	
<b>CLIENT:</b>	Strategic Oil & Gas C/O Alvarez & Marsal	<b>DATE:</b>	February 13, 2023
<b>UWI:</b>	300/L-44 60-10N 117-30W	<b>Report #:</b>	1
<b>PROJECT MANAGER:</b>	Christopher Gagnon	<b>AFE #:</b>	

<b>Proj # / AFE / Job Number:</b>	STRA050	<b>AFE Amount:</b>	\$335,391.53	<b>\$658,712.63</b>
<b>Project Descriptor:</b>	<b>Well Abandonments</b>			

<b>Cost Coding</b>	Surface Location	60.058610, -117.650830	<b>AREA</b>	Cameron Hills NWT
	License	1743		

## EXECUTIVE SUMMARY:

### NWT App: ACW-2022-SOG-L-44-WID1743

Day 1: Move in E-Line unit completed Temp/Radial Cement Bond log as per program. **Wellbore ready for Radial Bond Log interpretation.**

Day 2: Move in coil tubing, picker hot oiler testers. Held safety meeting. Spot equipment, remove well head install obit valve, stump test bops. Install bops, install dimpel conector. Move in rig mat and 400 bbl tank. Truck in 40 m3 fresh water

Day 3: Heat water tank with oiler, install over shot, Run in hole. Latch on to WR plug. Could not get plug to shift to equilazs, would not pull free. Drop ball disconnect for pulling tool. POOH rig out equipment.

Day 4: Move tubing to location. Testers on stand by

Day 5: Move snow on west side of location to get tank spotted to reg's, Move in rig, spot pump tank rig dog house. Plug in equipment for night.

Day 6: Stand rig, rig in rig pump tank, remove well head install bops. Tarp in bops. Heater not working. Make up over shot.

Day 7: Pressure test bops, make up over shot, each joint had to be winched up to floor. Run in hole latch on to WR pull 80 joints.

Day 8: Shoot hole in tubing to drain, POOH change out motor, rebuild dump sub, RIH with 2nd motor

Day 9: Rig in dead swivel, mill down 20 cm, OROGO out for inspection. POOH, lay out mill, run in with over shot. Tried to lach on to WR several times. Tubing should hung up. Start out of hole with tubing. 54 joints

Day 10: POOH with over shot, found pice of BP ring and rubber in over shot. Change out overshot for mill. RIH, mill out BP, chase BP down to 1450 m. POOH with mill. Lay out mill.

Day 11: Make up over shot, ran in hole. Pounded on fish. POOH redress over shot for 2 5/8" grapple. RIH. Pound on fish. POOH

Day 12: Pull out of hole with rovershot, remove rubber and 1 pice of steal. Change over to mill, RIH with mill, mill out BP 2 @ 1450 m, Run in 7 joints, start milling on BP 3 @ 1515 m. Mill for 1 hours, Pull 1 joint. Shut down for night.

Day 13: Drill out BP @ 1515 and 1520, run down to 1530 m. Start out of hole, Chelsea went on rig. Pump 35 m3 water down well.

Day 14: POOH with mill, run in with casing scraper, circulate hole, POOH with scraper, run BP and packer set BP @ 1523 m, Set packer test BP to 7000 kPa. Solid test. Mix cement, pump circulate cement to BP. POOH with packer.

Day 15: Run in with BP and packer, Set BP @ 1497. Set packer. Test BP and packer to 7000 kPa. Solid test, Release packer. Circulate 250 liters cement to BP. POOH change BP, RIH set BP @ 1419. set packer Test BP to 7000 kPa. Soild test. Release packer pull 1 joint.

Day 16: Mix up 250 liters cement, circulate cement to BP @ 1419 mKB. POOH with packer and setting tool. Run in with BP, set PB @ 1365 mKB. Pressure tested casing. Did not get pressure test. Pressure dropped from 7000 kPa to 0 in 30 sec. Pull 3 joints, run packer test well head. Solid test on well head. POOH with packer and setting tool.

Day 17: POOH with setting tool for BP, Run in with packer. Run to 478 meters, set packer Could not get test on tubing side, test casing no test. Run in to 953mm Could not get test on tubing, nor casing. Run in to 1359 Set and test BP to 7000 kPa solid test, Move packer above casing patch, Could not get a PT on casing patch. Pull up to 763 m. Set packer test casing. Found good casing @ 33.57 m from surface.

Day 18: Run in hole with 73mm opened to BP @ 1365 mKb, circulate cement to BP. POOH Run in with 2nd BP and packer, set BP @ 1345 mKB. PT BP to 7000 kPa. Solid test, Mix 250 liters cement, Circulate cement to BP. POOH and find bottom of bad casing. Good casing to last test @ 426 mKb

Day 19: Look for casing leak. Found leat from 43.06 - 33.56 m. Contacted OROGO, able to leave well as is. Rig out all equipment.

Day 20 : Demob equipment back to base.

Day 21: Checked well for pressure 0kpa, thawed well, cut off well at 2m below ground, installed sign, capped well, backed filled. Well complete.



## DAILY REPORT

CLIENT:	Strategic Oil & Gas C/O Alvarez & Marsal		DATE :	January 17, 2023	
UWI:	300/L-44 60-10N 117-30W		Report #:	1	
PROJECT MANAGER:	Christopher Gagnon		AFE #:		
PROJECT NUMBER:	STRA050	AFE Amount:	\$335,391.53	% of AFE spent:	2%
Previous Costs to Date:	\$0.00	Current Days Costs:	\$5,428.00	Total Cost to Date:	\$5,428.00
OPERATIONS SUMMARY:	Moved in E-line unit compete Temp/Radial Cement Bond Log on well bore, send report to office for Interpretation. SDFN				

### SUPERVISION CHARGES

[Add new line to ELM CHARGES](#)

SERVICE PROVIDED	Number of units	UNIT	RATE	RESOURCE NAME	Site Supervisor	AMOUNT
Project Supervisor	0.00	day	\$1,200.00		Warren Watson	\$0.00
Mileage (Minimum Charge)	0.00	Day	\$150.00			\$0.00
						\$0.00
						\$0.00
SUBTOTAL						\$0.00
Management Fee:						\$0.00
ELM TOTAL						\$0.00

### THIRD PARTY CHARGES

[Add new line to THIRD PARTY CHARGES](#)

SERVICE PROVIDED	MAN HOURS	PO#	TICKET #	CONTRACTOR	SUBTOTAL	Est.	AMOUNT
E-Line Unit			23-0149-09	Titanium	\$5,428.00		\$5,428.00
							\$0.00
							\$0.00
							\$0.00
							\$0.00
							\$0.00
MAN HOURS TOTAL					0.00	SUBTOTAL	\$5,428.00
Management Fee							\$0.00
THIRD PARTY TOTAL							\$5,428.00

To add a line in text box use "alt enter"

Time	Well Abandonments
09:00 AM	Arrived on location bump test and sweep location with 4 head lel monitor, recorded spills and other lease deficiencies, Weather Cloudy, Windy -18 C,
09:30 AM	Held Safety and Operational meeting with Titanium Wire Line Crew discussed following: Slips, trips and falls, (watered froze in location)boot cleats/studs required, uneven location, spotters when backing up, pinch points, hand and body placement, cold working conditions, deep snow, very slippery around well head.
10:00 AM	Stay hydrated, good visual of spotter when backing up, working over head, swing paths, muster points, good footing when laying out tool string. SICP - Dead, completed SCVF test 0 bubbles in 10 minutes. Backed up and spotted E-Line unit onto well head, stood mast unit. Rig out top section well head/Tbg hanger and laid down, (well head bolts where extremely tight) Rigged in and powered Temp Tool/CCL/Gamma, (all good)
11:30 AM	Make up run in hole and log as per Geothermal Exploration logging program, recorded information, ensured logs on depth, pulled and laid down tool. Logged from 1354.0 - 100.0 mKB, correlated onto casing shoe depth.
16:30 AM	Rigged in and powered up Radial Cement Bond Log Tool/CCL/Gamma tool string (all good) Make up run in hole tagged fluid level 321 m from surface. Completed high speed log running into wellbore (all looked good) Tagged programmed cement top 1354.0 mKB pulled 60 meter repeat pass, logged from 1354.0 mKB (PB) to fluid level. Cement bond looked good from PB to surface (field interpretation only)
17:00 PM	Pulled tool string to surface, rigged and tightened down well head top section



# DAILY REPORT

CLIENT:	Strategic Oil & Gas C/O Alvarez & Marsal	DATE :	February 28, 2023
UWI:	300/L-44 60-10N 117-30W	Report #:	2
PROJECT MANAGER:	Christopher Gagnon	AFE #:	
PROJECT NUMBER:	STRA050	AFE Amount:	\$335,391.53
Previous Costs to Date:	\$5,428.00	% of AFE spent:	21%
		Current Days Costs:	\$64,440.17
		Total Cost to Date:	\$69,868.17

**OPERATIONS SUMMARY:** Move in coil tubing, picker hot oiler testers. Held safety meeting. Spot equipment, remove well head install orbit valve, stump test bops. Install bops, install dimple connector. Move in rig mat and 400 bbl tank. Truck in 40 m3 fresh water

## SUPERVISION CHARGES

[Add new line to ELM CHARGES](#)

SERVICE PROVIDED	Number of units	UNIT	RATE	RESOURCE NAME	Site Supervisor	AMOUNT
Project Supervisor	1.00	day	\$1,200.00		Tim Schmidt	\$1,200.00
Mileage (Minimum Charge)	1.00	Day	\$150.00			\$150.00
						\$0.00
						\$0.00
						\$0.00
SUBTOTAL						\$1,350.00
Management Fee:						\$0.00
ELM TOTAL						\$1,350.00

## THIRD PARTY CHARGES

[Add new line to THIRD PARTY CHARGES](#)

SERVICE PROVIDED	MAN HOURS	PO#	TICKET #	CONTRACTOR	SUBTOTAL	Est.	AMOUNT
Coil unit	30.00		7421	Titanium	\$7,160.00		\$7,160.00
Testers	10.00		15275	Proflo	\$5,545.00		\$5,545.00
Big picker	11.00		75352	Pinnacle	\$3,960.00		\$3,960.00
Boiler	10.00		110377	Miktye	\$1,849.00		\$1,849.00
Hot oiler	10.00		96906	Apex	\$4,522.00		\$4,522.00
Vac truck	10.00		110218	Miktye	\$2,000.00		\$2,000.00
Tank truck			69358	Elite vac & Steam	\$3,864.00		\$3,864.00
Tool hand				Caliber	\$2,930.17		\$2,930.17
Heater				Conley	\$450.00	✓	\$450.00
Light towers (2)				Pinnacle	\$300.00	✓	\$300.00
Office trailer				Longhorn	\$270.00		\$270.00
Bed truck	10.00			Raydar	\$3,585.00		\$3,585.00
Coil unit to move in and 1st day work				Titanium	\$26,655.00		\$26,655.00
MAN HOURS TOTAL					91.00	SUBTOTAL	\$63,090.17
Management Fee							\$0.00
THIRD PARTY TOTAL							\$63,090.17

To add a line in text box use "alt enter"

Time	Well Abandonments
7:00	Move equipment to location. Held safety meeting with workers on site: 5 coil, 2 testers, 1 picker, 1 boiler, 1 Hot oiler
7:30	Discussed following: Slips, trips and falls, (watered froze in location)boot cleats/studs required, uneven location, spotters when backing up, pinch points, hand and body placement, cold working conditions, deep snow, very slippery around well head. Stay hydrated, good visual of spotter when backing up, working over head, swing paths, muster points, good footing when installing bops, and injector. SICP - Dead, completed SCVF test 0 bubbles in 10 minutes. Backed up coil unit at well using spotter, spot picker. Warm up hydraulics. Remove well head, install orbit valve. Bolt on X over /flow sub. Off load lube and BOPs. Stump test bops to 1.4 and 21 mPa on blind sheer, pipe 44.5mm, 44.5 mm combi rams each test for 10 min. All solid tests. Install bops on well head. Install dimple connector on 44.5 mm coil. Pull test coil dimple sub to 21000 daN's. Make up Cardium WR pulling tool. Move in rig mat and 400 bbl tank. Waiting on water.
14:00	Shut down for day due to timing of day.
16:00	Tomorrow's operations, test coil, install WR pulling tool, run in hole recover WR plug.





# DAILY REPORT

CLIENT:	Strategic Oil & Gas C/O Alvarez & Marsal		DATE :	March 1, 2023	
UWI:	300/L-44 60-10N 117-30W		Report #:	3	
PROJECT MANAGER:	Christopher Gagnon		AFE #:		
PROJECT NUMBER:	STRA050	AFE Amount:	\$335,391.53	% of AFE spent:	42%
Previous Costs to Date:	\$69,868.17	Current Days Costs:	\$70,712.45	Total Cost to Date:	\$140,580.62
OPERATIONS SUMMARY:	Heat water tank with oiler, install over shot, Run in hole. Latch on to WR plug. Could not get plug to shift to equilazs, would not pull free. Drop ball disconnect for pulling tool. POOH rig out equipment.				

## SUPERVISION CHARGES

[Add new line to ELM CHARGES](#)

SERVICE PROVIDED	Number of units	UNIT	RATE	RESOURCE NAME	Site Supervisor	AMOUNT
Project Supervisor	1.00	day	\$1,200.00		Tim Schmidt	\$1,200.00
Mileage (Minimum Charge)	1.00	Day	\$150.00			\$150.00
						\$0.00
						\$0.00
						\$0.00
SUBTOTAL						\$1,350.00
Management Fee:						\$0.00
ELM TOTAL						\$1,350.00

## THIRD PARTY CHARGES

[Add new line to THIRD PARTY CHARGES](#)

SERVICE PROVIDED	MAN HOURS	PO#	TICKET #	CONTRACTOR	SUBTOTAL	Est.	AMOUNT
Coil unit	36.00		7422	Titanium	\$7,160.00		\$7,160.00
Coil unit	28.00		23-0308-03	Titanium	\$26,815.00		\$26,815.00
Testers	24.00		15275	Proflo	\$4,270.00		\$4,270.00
Big picker	14.00		75370	Pinnacle	\$5,040.00		\$5,040.00
Boiler	12.00		110378	Miktye	\$2,661.15		\$2,661.15
Hot oiler	14.50		96907	Apex	\$12,911.13		\$12,911.13
Tool hand	12.00			Caliber	\$2,930.17		\$2,930.17
Heater				Conley	\$450.00	✓	\$450.00
Light towers (2)			75425	Pinnacle	\$320.00		\$320.00
Office trailer				Longhorn	\$135.00		\$135.00
Tank truck			69359	Elite vac & Steam	\$3,680.00		\$3,680.00
Vac truck	10.00		110219	Miktye	\$2,000.00		\$2,000.00
Air trailer and hand	10.00		2650	Fire Master	\$990.00		\$990.00
MAN HOURS TOTAL					160.50	SUBTOTAL	\$69,362.45
Management Fee							\$0.00
THIRD PARTY TOTAL							\$69,362.45

To add a line in text box use "alt enter"

Time	Well Abandonments
7:00	Check location for LELs. Location ok to work on. Held safety meeting with 5 coil, 2 testers, 1 picker, 1 boiler, 1 Hot oiler Found the Conley heater glycol heater quit working over night. Water frozen in 400 bbl tank. Discussed following: Slips, trips and falls, (watered froze in location)boot cleats/studs required, uneven location, spotters when backing up, pinch points, hand and body placement, cold working conditions, deep snow, very slippery around well head. Stay hydrated, good visual of spotter when backing up, working over head, swing paths, muster points, good footing when installing bops, and injector SICP - Dead. Have hot oiler heat water in 400 bbl to 40 deg C. Pick up injector and install on well. Fill coil with 0.5 m3 of 50/50 hot water meathol. followed with 40 deg C fresh water. Pressure test to testers to 14 mPa, coil and surface lines to 35 mPa. for 10 min. All test good. Remove injector and lub from top of bops, install 139.7mm Weatherford WR RT 0.70m, 73mm EUE nipple full drift 0.23m, 73mm EUE pin X 60.3mm X over 0.12 m, 60.3mm EUE X over to 60.3 PAC 0.43 m, Motor Assembly Disconnect 0.86m, Sub and Disconnect ball brop, 44.45mm coil connector 0.17m. Held a 2nd safety meeting on circulating procedures, and parameters of pressure's. Start running in hole, pumping @ 206 liters/min @ 7000 kPa @ 36 deg C. Did a pull test at 1000 meters. Pull again at 1300 meters. Increase fluid rate to 400 liters/min.@ 25000 kPa. Taged WR plug @ 1367.1 mKB.
10:00	Drop fluid rate down to 200 liters/min. Latch on to plug. Worked weight back and forth form -8000 to 14000 over string weight. Watched fluid. Did not get any loses.
13:00	Shut in casing, pressure up to see if WR was shifted. WR is not shifted. Bring fluid rate up to 480 liters/min. Velocity on annular is 35 m/min Continue to work coil. Shut down fluid tried to work WR to get to shift, Called Chris, dicidion was made to drop ball and disconnet for over shot.
14:00	POOH, blow coil dry with air.
16:00	Rig out coil bops orbit valve, install well head.
18:00	Leave equipment on location for night.
20:00	Next operations Move in service rig.



<b>CLIENT:</b>	Strategic Oil & Gas C/O Alvarez & Marsal		<b>DATE :</b>	March 2, 2023	
<b>UWI:</b>	300/L-44 60-10N 117-30W		<b>Report #:</b>	4	
<b>PROJECT MANAGER:</b>	Christopher Gagnon		<b>AFE #:</b>		
<b>PROJECT NUMBER:</b>	STRA050	<b>AFE Amount:</b>	\$335,391.53	<b>% of AFE spent:</b>	45%
<b>Previous Costs to Date:</b>	<b>\$140,580.62</b>	<b>Current Days Costs:</b>	<b>\$8,855.00</b>	<b>Total Cost to Date:</b>	<b>\$149,435.62</b>
<b>OPERATIONS SUMMARY:</b>	Move tubing to location. Testers on stand by				

## SUPERVISION CHARGES

### Add new line to ELM CHARGES

SERVICE PROVIDED	Number of units	UNIT	RATE	RESOURCE NAME	Site Supervisor	AMOUNT
Project Supervisor	0.00	day	\$1,200.00		Tim Schmidt	\$0.00
Mileage (Minimum Charge)	0.00	Day	\$150.00			\$0.00
						\$0.00
						\$0.00
						\$0.00
SUBTOTAL						\$0.00
Management Fee:						\$0.00
ELM TOTAL						\$0.00

### THIRD PARTY CHARGES

Add new line to THIRD PARTY CHARGES

SERVICE PROVIDED	MAN HOURS	PO#	TICKET #	CONTRACTOR	SUBTOTAL	Est.	AMOUNT
Testers			15770	Proflo	\$2,445.00		\$2,445.00
Heater				Conley	\$450.00	✓	\$450.00
Office trailer				Longhorn	\$135.00		\$135.00
Light towers			75425	Pinnacle	\$320.00		\$320.00
Big picker			9	Pinnacle	\$3,240.00		\$3,240.00
Vac truck				Miktye	\$2,000.00		\$2,000.00
Air trailer			48920315	Fire master	\$265.00		\$265.00
MAN HOURS TOTAL		0.00				SUBTOTAL	\$8,855.00
						Management Fee	\$0.00
						THIRD PARTY TOTAL	\$8,855.00

**To add a line in text box use "alt enter"**

[illegible]



## DAILY REPORT

CLIENT:	Strategic Oil & Gas C/O Alvarez & Marsal		DATE :	March 3, 2023	
UWI:	300/L-44 60-10N 117-30W		Report #:	5	
PROJECT MANAGER:	Christopher Gagnon		AFE #:		
PROJECT NUMBER:	STRA050	AFE Amount:	\$335,391.53	% of AFE spent:	56%
Previous Costs to Date:	\$149,435.62	Current Days Costs:	\$38,000.90	Total Cost to Date:	\$187,436.52
OPERATIONS SUMMARY:	Move snow on west side of location to get tank spotted to reg's, Move in rig, spot pump tank rig dog house. Plug in equipment for night.				

### SUPERVISION CHARGES

[Add new line to ELM CHARGES](#)

SERVICE PROVIDED	Number of units	UNIT	RATE	RESOURCE NAME	Site Supervisor	AMOUNT
Project Supervisor	1.00	day	\$1,200.00		Tim Schmidt	\$1,200.00
Mileage (Minimum Charge)	1.00	Day	\$150.00			\$150.00
						\$0.00
						\$0.00
SUBTOTAL						\$1,350.00
Management Fee:						\$0.00
ELM TOTAL						\$1,350.00

### THIRD PARTY CHARGES

[Add new line to THIRD PARTY CHARGES](#)

SERVICE PROVIDED	MAN HOURS	PO#	TICKET #	CONTRACTOR	SUBTOTAL	Est.	AMOUNT
Testers	24.00		15770	Proflo	\$2,445.00		\$2,445.00
Heater				Conley	\$450.00	✓	\$450.00
Office trailer				Longhorn	\$135.00		\$135.00
Light towers			75425	Pinnacle	\$320.00		\$320.00
Vac truck	10.00			Miktye	\$2,000.00		\$2,000.00
Service rig Mar 2	47.50		7003	Roll'n Well	\$12,391.28		\$12,391.28
Tank truck			69361	Elite vac & Steam	\$3,680.00		\$3,680.00
Boiler			110380	Miktye	\$1,849.00		\$1,849.00
service rig Mar 3	62.50		7004	Roll'n Well	\$13,115.62		\$13,115.62
Air trailer			48920315	Fire master	\$265.00		\$265.00
MAN HOURS TOTAL					144.00	SUBTOTAL	\$36,650.90
						Management Fee	\$0.00
						THIRD PARTY TOTAL	\$36,650.90

To add a line in text box use "alt enter"

Time	Well Abandonments
10:00	Move snow on west side of location to get tank 50 meters from flair and well head.
17:00	Move equipment to location. Held safety meeting with 5 rig, 2 testers, 1 boiler 1 WSS. Discussed following: Slips, trips and falls, (watered froze in location)boot cleats/studs required, uneven location, spotters when backing up, pinch points, hand and body placement, cold working conditions, very slippery around well head. Stay hydrated, good visual of spotter when backing up, working over head, swing paths, muster points spot pump tank, rig dog house, plug in all equipment for night.
18:30	Shut down for night. Next operations. Rig up rig pump tank, accumulator, install bops, rig in floor. Run in with over shot.



# DAILY REPORT

CLIENT:	Strategic Oil & Gas C/O Alvarez & Marsal		DATE :	March 4, 2023	
UWI:	300/L-44 60-10N 117-30W		Report #:	6	
PROJECT MANAGER:	Christopher Gagnon		AFE #:		
PROJECT NUMBER:	STRA050	AFE Amount:	\$335,391.53	% of AFE spent:	63%
Previous Costs to Date:	\$187,436.52	Current Days Costs:	\$23,500.78	Total Cost to Date:	\$210,937.30

**OPERATIONS SUMMARY:** Stand rig, rig in rig pump tank, remove well head install bops. Tarp in bops. Heater not working. Make up over shot.

## SUPERVISION CHARGES

Add new line to ELM CHARGES

SERVICE PROVIDED	Number of units	UNIT	RATE	RESOURCE NAME	Site Supervisor	AMOUNT
Project Supervisor	1.00	day	\$1,200.00		Tim Schmidt	\$1,200.00
Mileage (Minimum Charge)	1.00	Day	\$150.00			\$150.00
						\$0.00
						\$0.00
						\$0.00
SUBTOTAL						\$1,350.00
Management Fee:						\$0.00
ELM TOTAL						\$1,350.00

## THIRD PARTY CHARGES

Add new line to THIRD PARTY CHARGES

SERVICE PROVIDED	MAN HOURS	PO#	TICKET #	CONTRACTOR	SUBTOTAL	Est.	AMOUNT
Testers	24.00		15770	Proflo	\$2,445.00		\$2,445.00
Heater				Conley	\$450.00	✓	\$450.00
Office trailer				Longhorn	\$135.00		\$135.00
Light towers			75425	Pinnacle	\$320.00		\$320.00
Boiler	4.00		110381	Miktye	\$796.60		\$796.60
Service rig	57.50		7005	Roll'n Well	\$10,959.18		\$10,959.18
Tank truck			69362	Elite vac & Steam	\$3,680.00		\$3,680.00
Picker for mats			75374	Pinnacle	\$3,100.00		\$3,100.00
Air trailer			48920315	Fire master	\$265.00		\$265.00
MAN HOURS TOTAL		85.50			SUBTOTAL		\$22,150.78
						Management Fee	\$0.00
						THIRD PARTY TOTAL	\$22,150.78

To add a line in text box use "alt enter"

Time	Well Abandonments
7:00	Start equipment. Temp -26 deg C North wind 26 km/h -38 with wind chill
7:15	Held safety meeting with all personnel on location. Rig (5), Testers (2) WSS (1) Discussed following: Slips, trips and falls, (watered froze in location)boot cleats/studs required, uneven location, spotters when backing up, pinch points, hand and body placement, cold working conditions, lease uneven, very slippery around well head. Stay hydrated, working over head, swing paths, muster points new hand working in NWT, drip trays 0 spillage of any fluids, good footing when installing bops, wear belt on tell hand railing are installed, picking up pipe watch for drift.
7:45	Do a derrick inspection before standing derrick. Inspect pump tank, check air kills on rig (2) pump (1) in good working order. Center rig over hole, Change over all handling equipment to 73mm.
8:30	Had to snipe well head bolts out. Heater not running properly. Rig in accumulator, function test BOPs. Starting pressure 16500 kPa after three function final pressure 13200 kPa. 2 m 45 sec to recharge. Remove well head, strip on BOP's. Rig in floor tongs slips. Count pipe tally pipe. Make up over shot. to fish disconnect sub. Shut down for night.
18:30	Next day operations. Pick up over shot, tally and drift in hole to WR.



# DAILY REPORT

CLIENT:	Strategic Oil & Gas C/O Alvarez & Marsal		DATE :	March 5, 2023	
UWI:	300/L-44 60-10N 117-30W		Report #:	7	
PROJECT MANAGER:	Christopher Gagnon		AFE #:		
PROJECT NUMBER:	STRA050	AFE Amount:	\$335,391.53	% of AFE spent:	70%
Previous Costs to Date:	\$210,937.30	Current Days Costs:	\$23,143.62	Total Cost to Date:	\$234,080.92

**OPERATIONS SUMMARY:** Pressure test bops, make up over shot, each joint had to be winched up to floor, run in hole latch on to WR pull 80 joints.

## SUPERVISION CHARGES

Add new line to ELM CHARGES

SERVICE PROVIDED	Number of units	UNIT	RATE	RESOURCE NAME	Site Supervisor	AMOUNT
Project Supervisor	1.00	day	\$1,200.00		Tim Schmidt	\$1,200.00
Mileage (Minimum Charge)	1.00	Day	\$150.00			\$150.00
						\$0.00
						\$0.00
						\$0.00
SUBTOTAL						\$1,350.00
Management Fee:						\$0.00
ELM TOTAL						\$1,350.00

## THIRD PARTY CHARGES

Add new line to THIRD PARTY CHARGES

SERVICE PROVIDED	MAN HOURS	PO#	TICKET #	CONTRACTOR	SUBTOTAL	Est.	AMOUNT
Testers	24.00		15770	Proflo	\$2,445.00		\$2,445.00
Heater				Conley	\$450.00	✓	\$450.00
Office trailer				Longhorn	\$135.00		\$135.00
Light towers			75425	Pinnacle	\$320.00		\$320.00
Boiler	13.00		111221	Miktye	\$2,573.00		\$2,573.00
Service rig	62.50		7006	Roll'n Well	\$11,925.62		\$11,925.62
Tank truck			69362	Elite vac & Steam	\$3,680.00		\$3,680.00
Air trailer			48920315	Fire master	\$265.00		\$265.00
MAN HOURS TOTAL					99.50		
SUBTOTAL							\$21,793.62
Management Fee							\$0.00
THIRD PARTY TOTAL							\$21,793.62

To add a line in text box use "alt enter"

Time	Well Abandonments
7:00	Start equipment. Temp -28 deg C North wind 26 km/h -38 with wind chill Held safety meeting with all personnel on location. Rig (5), Testers (2) Boiler (1), Tool hand (1) WSS (1) Discussed following: Slips, trips and falls, (watered froze in location)boot cleats, uneven location, spotters when backing up, pinch points, hand and body placement, cold working conditions, lease uneven, very slippery around well head. Stay hydrated, working over head, swing paths, muster points, drip trays 0 spillage of any fluids, picking up pipe watch for drift, steaming tubing joints.
7:30	Check 2 air kills on rig, 1 on pump, air kills working properly, Check crown saver, working properly. Tie winch from 5 ton to top of BOPs to straighten up well head to keep from cross threading pipe. Pressure test blind rams to 1.4 and 21mPa for 10 min each, Test 73mm pipe ram's to 1.4 to 21 mPa, annular to 1.4 and 7 mPa for 10 min. All test good. Pick up over shot cut lip 119 mm, 0.19m, Overshot barrel 119mm 0.95 m, 73mm eue X 1060.3 96 mm, pup joint 73 mm 1.24 m, Bumper subs ID 48.26mm 95.25 OD mm 2.17 m, Jars ID 48.26mm OD 95.25mm 2.69m, X over 60.3mm X 73mm 96mm OD 0.12m, pup joint 73mm 3.08m, Nipple ID 58.72mm (2.31) F OD 78mm, Had to winch each joint up to floor. Tubing to surface. Got fluid to surface on joint 114. Rig pump to suck back.
15:00	Continue running in hole sucking on casing.
17:00	Work to get on fish, joint 143, pulled 10500 daN's over string to get WR to pull free. Let WR sit for 10 min to relax rubbers.
17:30	Pull out of hole with WR plug and tubing. Pulled 80 joints.
19:30	Shut down for night. Cap well lock ram's, drain pump. Have heat on bops and heat in 400 bbl for night.
	Next day operation, finish POOH, remove WR install mill.



# DAILY REPORT

CLIENT:	Strategic Oil & Gas C/O Alvarez & Marsal	DATE :	March 6, 2023
UWI:	300/L-44 60-10N 117-30W	Report #:	8
PROJECT MANAGER:	Christopher Gagnon	AFE #:	
PROJECT NUMBER:	STRA050	AFE Amount:	\$335,391.53
Previous Costs to Date:	\$234,080.92	% of AFE spent:	79%
		Current Days Costs:	\$29,640.68
		Total Cost to Date:	\$263,721.60

## OPERATIONS SUMMARY:

## SUPERVISION CHARGES

Add new line to ELM CHARGES

SERVICE PROVIDED	Number of units	UNIT	RATE	RESOURCE NAME	Site Supervisor	AMOUNT
Project Supervisor	1.00	day	\$1,200.00		Tim Schmidt	\$1,200.00
Mileage (Minimum Charge)	1.00	Day	\$150.00			\$150.00
						\$0.00
						\$0.00
						\$0.00
SUBTOTAL						\$1,350.00
Management Fee:						\$0.00
ELM TOTAL						\$1,350.00

## THIRD PARTY CHARGES

Add new line to THIRD PARTY CHARGES

SERVICE PROVIDED	MAN HOURS	PO#	TICKET #	CONTRACTOR	SUBTOTAL	Est.	AMOUNT
Testers	24.00		15771	Proflo	\$5,545.00		\$5,545.00
Heater				Conley	\$450.00	✓	\$450.00
Office trailer				Longhorn	\$135.00		\$135.00
Light towers			75425	Pinnacle	\$320.00		\$320.00
Boiler	13.00		111222	Miktye	\$2,836.05		\$2,836.05
Service rig	62.50		7007	Roll'n Well	\$11,925.63		\$11,925.63
Tank truck	12.00		69365	Elite vac & Steam	\$3,680.00		\$3,680.00
Air trailer			48920315	Fire master	\$265.00		\$265.00
Tool hand			76785	Caliber	\$3,000.00		\$3,000.00
Kenwood mobile			7006319	Red Rabbit	\$14.00		\$14.00
Mats (20)feet 2				Pinnacle	\$120.00	✓	\$120.00
MAN HOURS TOTAL					111.50		
SUBTOTAL							\$28,290.68
Management Fee							\$0.00
THIRD PARTY TOTAL							\$28,290.68

To add a line in text box use "alt enter"

Time	Well Abandonments
7:00:00 AM	Start equipment. Temp -37 deg C North wind 2 km/h -41 with wind chill Held safety meeting with all personnel on location. Rig (5), Testers (2) Boiler (1), Tool hand (1) WSS (1) Discussed following: Slips, trips and falls, (watered froze in location) boot cleats, uneven location, spotters when backing up, pinch points, hand and body placement, cold working conditions, lease uneven, very slippery around well head. Stay hydrated, working over head, swing paths, muster points, drip trays 0 spillage of any fluids, picking up pipe watch for drift, steaming tubing joints. Check 2 air kills on rig, 1 on pump, air kills working properly, Check crown saver, working properly. Tie winch from 5 ton to top of BOPs to straighten up well head to keep from cross threading pipe.
8:00	Continue to pullout of hole with WR plug. WR plug on surface.
10:00	Make up mill. 122 mm OD mill 69.85 mm ID, 0.93 m, 122mm Extension 0.85m, 60.3mm IF drive sub (fish neck 84 mm) 0.54m, 73 mm IF pin X over 73 mm Reg pin 84 mm OD, Mud motor 88.9 mm 4.60 m, 73mm Reg pin dump sub 60.3mm IF box88.9mm OD 0.48m, 60.3mm IF pin x over 73 mm EUE box 0.3m, 73mm pup joint collar 94 mm 1.88 m, 73 mm EUE float sub 94 mm OD 0.33 m.
11:30	Start in hole, run 40 joints, test motor, motor test good, continue in hole to 1st BP @ 1402 mKB. Rig in dead swivel.
15:30	Start milling, Fluid rate 400 liters/min ann velocity 35.67 m/min. 39 min bottoms up. Milling with 2 daN's weight on mill. Milling going very slow, increased weight on mill.
16:30	Motor seems to not working properly. Can't get any torque out of motor. Pick mill off of bp. No change in pump pressure. Set all weight on mill, still no change in pump pressure.
17:30	Rig out dead swivel. Pull first joint, tubing pulling weight. Seems like dump sub now working. Shut down for night. <b>Next day operation POOH with motor and mill.</b>



## DAILY REPORT

CLIENT:	Strategic Oil & Gas C/O Alvarez & Marsal		DATE :	March 7, 2023	
UWI:	300/L-44 60-10N 117-30W		Report #:	9	
PROJECT MANAGER:	Christopher Gagnon		AFE #:		
PROJECT NUMBER:	STRA050	AFE Amount:	\$335,391.53	% of AFE spent:	89%
Previous Costs to Date:	\$263,721.60	Current Days Costs:	\$35,646.68	Total Cost to Date:	\$299,368.28

**OPERATIONS SUMMARY:** Shoot hole in tubing to drain, POOH change out motor, rebuild dump sub, RIH with 2nd motor

### SUPERVISION CHARGES

Add new line to ELM CHARGES

SERVICE PROVIDED	Number of units	UNIT	RATE	RESOURCE NAME	Site Supervisor	AMOUNT
Project Supervisor	1.00	day	\$1,200.00		Tim Schmidt	\$1,200.00
Mileage (Minimum Charge)	1.00	Day	\$150.00			\$150.00
						\$0.00
						\$0.00
						\$0.00
SUBTOTAL						\$1,350.00
Management Fee:						\$0.00
ELM TOTAL						\$1,350.00

### THIRD PARTY CHARGES

Add new line to THIRD PARTY CHARGES

SERVICE PROVIDED	MAN HOURS	PO#	TICKET #	CONTRACTOR	SUBTOTAL	Est.	AMOUNT
Testers	24.00		15771	Proflo	\$5,395.00		\$5,395.00
Heater				Conley	\$450.00	✓	\$450.00
Office trailer				Longhorn	\$135.00		\$135.00
Light towers			75425	Pinnacle	\$320.00		\$320.00
Boiler	13.00		111223	Miktye	\$2,836.05		\$2,836.05
Service rig	62.50		7008	Roll'n Well	\$11,925.63		\$11,925.63
Tank truck			69365	Elite vac & Steam	\$3,680.00		\$3,680.00
Air trailer			48920315	Fire master	\$265.00		\$265.00
Tool hand			76785	Caliber	\$3,000.00		\$3,000.00
Mats (20)feet 2				Pinnacle	\$40.00	✓	\$40.00
Cut hole in tubing to drain			23-0287-08	Titanium	\$6,250.00		\$6,250.00
MAN HOURS TOTAL					99.50		
SUBTOTAL							\$34,296.68
Management Fee							\$0.00
THIRD PARTY TOTAL							\$34,296.68

To add a line in text box use "alt enter"

Time	Well Abandonments
7:00	Start equipment. Temp -24 deg C North wind 2 km/h -25 with wind chill Held safety meeting with all personnel on location. Rig (5), Testers (2) Boiler (1), Tool hand (1) WSS (1) Discussed following: Slips, trips and falls, (watered froze in location)boot cleats, uneven location, spotters when backing up, pinch points, hand and body placement, cold working conditions, lease uneven, very slippery around well head. Stay hydrated, working over head, swing paths, muster points, drip trays 0 spillage of any fluids, picking up pipe watch for drift, steaming tubing joints. Check 2 air kills on rig, 1 on pump, air kills working properly, Check crown saver, working properly.
8:30	Rig in wire line to poke hole in tubing to get it to drain. Held safety meeting with wire line. Run in run in hole to 1385 meters. Cut hole. POOH rig out wire line.
11:45	POOH with tubing and motor.
15:00	Lay out motor. Sleeve in dump sub would not move. Take apart dump sub, clean inside of sub. Black settlement in and around sleeve. Got sleeve to move freely, install dump sub on new motor install mill.
16:00	Running back in hole with mill and motor. Run 20 joints, test motor. Motor seems to be working now. Shut down for night.
	Next day operation: run back in and start drilling



# DAILY REPORT

CLIENT:	Strategic Oil & Gas C/O Alvarez & Marsal		DATE :	March 8, 2023	
UWI:	300/L-44 60-10N 117-30W		Report #:	10	
PROJECT MANAGER:	Christopher Gagnon		AFE #:		
PROJECT NUMBER:	STRA050	AFE Amount:	\$335,391.53	% of AFE spent:	97%
Previous Costs to Date:	\$299,368.28	Current Days Costs:	\$26,826.88	Total Cost to Date:	\$326,195.16

**OPERATIONS SUMMARY:** Rig in dead swivel, mill down 20 cm, OROGO out for inspection. POOH, lay out mill, run in with over shot. Tried to lach on to WR several times. Tubing should hung up. Start out of hole with tubing 54 joints

## SUPERVISION CHARGES

[Add new line to ELM CHARGES](#)

SERVICE PROVIDED	Number of units	UNIT	RATE	RESOURCE NAME	Site Supervisor	AMOUNT
Project Supervisor	1.00	day	\$1,200.00		Tim Schmidt	\$1,200.00
Mileage (Minimum Charge)	1.00	Day	\$150.00			\$150.00
						\$0.00
						\$0.00
						\$0.00
SUBTOTAL						\$1,350.00
Management Fee:						\$0.00
ELM TOTAL						\$1,350.00

## THIRD PARTY CHARGES

[Add new line to THIRD PARTY CHARGES](#)

SERVICE PROVIDED	MAN HOURS	PO#	TICKET #	CONTRACTOR	SUBTOTAL	Est.	AMOUNT
Testers	24.00		15951	Proflo	\$4,705.00		\$4,705.00
Heater				Conley	\$450.00	✓	\$450.00
Office trailer				Longhorn	\$135.00		\$135.00
Light towers			75425	Pinnacle	\$320.00		\$320.00
Boiler	14.00		111224	Miktye	\$2,686.25		\$2,686.25
Service rig	60.00		7009	Roll'n Well	\$12,195.63		\$12,195.63
Tank truck			69366	Elite vac & Steam	\$3,680.00		\$3,680.00
Air trailer			48920315	Fire master	\$265.00		\$265.00
Tool hand			76785	Caliber	\$1,000.00		\$1,000.00
Mats (20)feet 2				Pinnacle	\$40.00	✓	\$40.00
MAN HOURS TOTAL 98.00					SUBTOTAL		\$25,476.88
					Management Fee		\$0.00
					THIRD PARTY TOTAL		\$25,476.88

To add a line in text box use "alt enter"

Time	Well Abandonments
7:00	Start equipment. Temp -21 deg C North wind 0 km/h -21 with wind chill Held safety meeting with all personnel on location. Rig (5), Testers (2) Boiler (1), Tool hand (1) WSS (1) Discussed following: Slips, trips and falls, (watered froze in location)boot cleats, uneven location, spotters when backing up, pinch points, hand and body placement, cold working conditions, lease uneven, very slippery around well head. Stay hydrated, working over head, swing paths, muster points, drip trays 0 spillage of any fluids, picking up pipe watch for drift, steaming tubing joints. Check 2 air kills on rig, 1 on pump, air kills working properly, Check crown saver, working properly.
7:30	Pick up last joint with dead swivel, Break circulation.
8:30	Start milling on BP. Made 20 cementers milling. Circulate bottoms up. Rig out dead swivel.
10:00	OROGO on location for inspection. Land department on location for inspection. 3.25 hours. Held bop drill 51 sec
11:45	Start out of hole with pipe. Had to mud can 28 joints. Tubing pulling dry, remove mud can. Lay out mill. Good ware on inside of mill.
15:30	Pick up over shot, jars and bumper sub, run in hole. Get up weight 14000 daNs , and good down weight. Tag BP, pulled slowly. Did not see any weight change, tap down on BP, pick up, Tap down with bumper sub three times, Pulled up 1 meters. Sat back down. Went back down to BP depth. Tubing should of hung up if BP was in overshot.
17:45	Start out of hole with tubing. 54 joints, Held bop drill 46 sec
19:00	Shut down for night, drain pump and lines, close and lock pipe ram's
	Next days operations. POOH with over shot.





# DAILY REPORT

CLIENT:	Strategic Oil & Gas C/O Alvarez & Marsal		DATE :	March 9, 2023	
UWI:	300/L-44 60-10N 117-30W		Report #:	11	
PROJECT MANAGER:	Christopher Gagnon		AFE #:		
PROJECT NUMBER:	STRA050	AFE Amount:	\$335,391.53	% of AFE spent:	105%
Previous Costs to Date:	\$326,195.16	Current Days Costs:	\$24,346.88	Total Cost to Date:	\$350,542.04
OPERATIONS SUMMARY:	POOH with over shot, found pice of BP ring and rubber in over shot. Change out overshot for mill. RIH, mill out BP, chase BP down to 1450 m. POOH with mill. Lay out mill.				

## SUPERVISION CHARGES

[Add new line to ELM CHARGES](#)

SERVICE PROVIDED	Number of units	UNIT	RATE	RESOURCE NAME	Site Supervisor	AMOUNT
Project Supervisor	1.00	day	\$1,200.00		Tim Schmidt	\$1,200.00
Mileage (Minimum Charge)	1.00	Day	\$150.00			\$150.00
						\$0.00
						\$0.00
						\$0.00
SUBTOTAL						\$1,350.00
Management Fee:						\$0.00
ELM TOTAL						\$1,350.00

## THIRD PARTY CHARGES

[Add new line to THIRD PARTY CHARGES](#)

SERVICE PROVIDED	MAN HOURS	PO#	TICKET #	CONTRACTOR	SUBTOTAL	Est.	AMOUNT
Testers	24.00		15952	Proflo	\$2,445.00		\$2,445.00
Heater				Conley	\$450.00	✓	\$450.00
Office trailer				Longhorn	\$135.00		\$135.00
Light towers			75425	Pinnacle	\$320.00		\$320.00
Boiler	14.00		111225	Miktye	\$2,586.25		\$2,586.25
Service rig	62.50		7010	Roll'n Well	\$12,075.63		\$12,075.63
Tank truck	0.00		69367	Elite vac & Steam	\$3,680.00		\$3,680.00
Air trailer			48920315	Fire master	\$265.00		\$265.00
Tool hand			76785	Caliber	\$1,000.00		\$1,000.00
Mats (20)feets 2				Pinnacle	\$40.00	✓	\$40.00
MAN HOURS TOTAL					100.50	SUBTOTAL	\$22,996.88
						Management Fee	\$0.00
						THIRD PARTY TOTAL	\$22,996.88

To add a line in text box use "alt enter"

Time	Well Abandonments
7:00	Start equipment. Temp -17 deg C North wind 0 km/h Held safety meeting with all personnel on location. Rig (5), Testers (2) Boiler (1), Tool hand (1) WSS (1) Discussed following: Slips, trips and falls, (watered froze in location) boot cleats, uneven location, spotters when backing up, pinch points, hand and body placement, cold working conditions, lease uneven, very slippery around well head. Stay hydrated, working over head, swing paths, muster points, drip trays 0 spillage of any fluids, picking up pipe watch for drift, steaming tubing joints. Check 2 air kills on rig, 1 on pump, air kills working properly, Check crown saver, working properly.
7:45	Continue pulling out of hole with pipe. Recovered top ring of BP.
10:00	Change out over shot for mill. Run in hole with 122 mm OD mill 69.85 mm ID, 0.93 m, 122mm Extension 0.85m, 60.3mm IF drive sub (fish neck 84 mm) 0.54m, 73 mm IF pin X over 73 mm Reg pin 84 mm OD, Mud moto 88.9 mm 4.60 m, 73mm Reg pin dump sub 60.3mm IF box88.9mm OD 0.48m, 60.3mm IF pin x over 73 mm EUE box 0.3m, 73mm pup joint collar 94 mm 1.88 m, 73 mm EUE float sub 94 mm OD 0.33 m. Tubing to surface. Rig in dead swivel.
13:30	Start milling with fluid rate of 400 l/min @ 7 mPa. Mill on BP, BP dropped down hole, pick up 5 joints, Milled out BP sitting on BP @ 1450 m.
15:00	Lay out tag joint, POOH with mill. Nothing inside of mill, lay out mill.
19:30	Shut down for night. Shut and lock ram's drain pump and lines.
	Next day operations, run in with overshot.



# DAILY REPORT

CLIENT:	Strategic Oil & Gas C/O Alvarez & Marsal		DATE :	March 10, 2023	
UWI:	300/L-44 60-10N 117-30W		Report #:	12	
PROJECT MANAGER:	Christopher Gagnon		AFE #:		
PROJECT NUMBER:	STRA050	AFE Amount:	\$335,391.53	% of AFE spent:	112%
Previous Costs to Date:	\$350,542.04	Current Days Costs:	\$24,494.43	Total Cost to Date:	\$375,036.47
OPERATIONS SUMMARY:	Make up over shot, ran in hole. Pounded on fish. POOH redress over shot for 2 5/8" grapple. RIH. Pound on fish. POOH				

## SUPERVISION CHARGES

[Add new line to ELM CHARGES](#)

SERVICE PROVIDED	Number of units	UNIT	RATE	RESOURCE NAME	Site Supervisor	AMOUNT
Project Supervisor	1.00	day	\$1,200.00		Tim Schmidt	\$1,200.00
Mileage (Minimum Charge)	1.00	Day	\$150.00			\$150.00
						\$0.00
						\$0.00
SUBTOTAL						\$1,350.00
Management Fee:						\$0.00
ELM TOTAL						\$1,350.00

## THIRD PARTY CHARGES

[Add new line to THIRD PARTY CHARGES](#)

SERVICE PROVIDED	MAN HOURS	PO#	TICKET #	CONTRACTOR	SUBTOTAL	Est.	AMOUNT
Testers	24.00		15952	Proflo	\$2,445.00		\$2,445.00
Heater				Conley	\$450.00	✓	\$450.00
Office trailer				Longhorn	\$135.00		\$135.00
Light towers			75425	Pinnacle	\$320.00		\$320.00
Boiler	12.00		111226	Miktye	\$2,538.80		\$2,538.80
Service rig	62.50		7011	Roll'n Well	\$12,420.63		\$12,420.63
Tank truck			69368	Elite vac & Steam	\$3,530.00		\$3,530.00
Air trailer			48920315	Fire master	\$265.00		\$265.00
Tool hand			76785	Caliber	\$1,000.00		\$1,000.00
Mats (20)feet 2				Pinnacle	\$40.00	✓	\$40.00
MAN HOURS TOTAL 98.50					SUBTOTAL		\$23,144.43
					Management Fee		\$0.00
					THIRD PARTY TOTAL		\$23,144.43

To add a line in text box use "alt enter"

Time	Well Abandonments
7:00	Start equipment. Temp -14 deg C North wind 0 km/h Held safety meeting with all personnel on location. Rig (5), Testers (2) Boiler (1), Tool hand (1) WSS (1) Discussed following: Slips, trips and falls, (watered froze in location)boot cleats, uneven location, spotters when backing up, pinch points, hand and body placement, cold working conditions, lease uneven, very slippery around well head. Stay hydrated, working over head, swing paths, muster points, drip trays 0 spillage of any fluids, picking up pipe watch for drift, steaming tubing joints. Check 2 air kills on rig, 1 on pump, air kills working properly, Check crown saver, working properly.
8:00	Make up overshot. cut lip, overshot, Pup joint, X over bumper sub Jars, X over Pup joint Nipple. Over shot assembled for 73mm fish. Run in hole with 73mm pipe.
10:00	Tagged fish, work pipe down on fish, Went through motions of latching on. Pull out of hole with overshot. Did not get anything in over shot. Change out grapples down sized to 2 5/8".
14:00	Run in hole with overshot. Pound down on fish several times.
16:45	Pull out with tubing, 80 joints, shut down for night.
19:00	Shut down for night drain pump lines, cap up well.
	Next day operations, finish POOH make up mill drill out last three BP's



<b>OPERATIONS SUMMARY:</b>	Pull out of hole with rovershot, remove rubber and 1 pice of steal. Change over to mill, RIH with mill, mill out BP 2 @ 1450 m, Run in 7 joints, start milling on BP 3 @ 1515 m. Mill for 1 hours, Pull 1 joint. Shut down for night.
----------------------------	---

## SUPERVISION CHARGES

### Add new line to ELM CHARGES

SERVICE PROVIDED	Number of units	UNIT	RATE	RESOURCE NAME	Site Supervisor	AMOUNT
Project Supervisor	1.00	day	\$1,200.00		Tim Schmidt	\$1,200.00
Mileage (Minimum Charge)	1.00	Day	\$150.00		Tim Schmidt	\$150.00
						\$0.00
						\$0.00
						\$0.00
SUBTOTAL						\$1,350.00
Management Fee:						\$0.00
ELM TOTAL						\$1,350.00

## THIRD PARTY CHARGES

**Add new line to THIRD PARTY CHARGES**

SERVICE PROVIDED	MAN HOURS	PO#	TICKET #	CONTRACTOR	SUBTOTAL	Est.	AMOUNT
Testers	24.00		15952	Proflo	\$2,445.00		\$2,445.00
Heater				Conley	\$450.00	✓	\$450.00
Office trailer				Longhorn	\$135.00		\$135.00
Light towers			75425	Pinnacle	\$320.00		\$320.00
Boiler	12.00		111227	Miktye	\$2,841.15		\$2,841.15
Service rig	62.50		7012	Roll'n Well	\$12,205.63		\$12,205.63
Tank truck			69369	Elite vac & Steam	\$3,605.00		\$3,605.00
Air trailer			48920315	Fire master	\$265.00		\$265.00
Tool hand			76785	Caliber	\$1,000.00		\$1,000.00
Mats (20)foots 2				Pinnacle	\$40.00	✓	\$40.00
<b>MAN HOURS TOTAL</b>		<b>98.50</b>				<b>SUBTOTAL</b>	\$23,306.78
						<b>Management Fee</b>	\$0.00
						<b>THIRD PARTY TOTAL</b>	<b>\$23,306.78</b>

**To add a line in text box use "alt enter"**

Page 14 of 22



# DAILY REPORT

CLIENT:	Strategic Oil & Gas C/O Alvarez & Marsal		DATE :	March 12, 2023	
UWI:	300/L-44 60-10N 117-30W		Report #:	14	
PROJECT MANAGER:	Christopher Gagnon		AFE #:		
PROJECT NUMBER:	STRA050	AFE Amount:	\$335,391.53	% of AFE spent:	126%
Previous Costs to Date:	\$399,693.25	Current Days Costs:	\$23,711.35	Total Cost to Date:	\$423,404.60
OPERATIONS SUMMARY:	Drill out BP @ 1515 and 1520, run down to 1530 m. Start out of hole, Chelsea went on rig. Pump 35 m3 water down well.				

## SUPERVISION CHARGES

[Add new line to ELM CHARGES](#)

SERVICE PROVIDED	Number of units	UNIT	RATE	RESOURCE NAME	Site Supervisor	AMOUNT
Project Supervisor	1.00	day	\$1,200.00		Tim Schmidt	\$1,200.00
Mileage (Minimum Charge)	1.00	Day	\$150.00			\$150.00
						\$0.00
						\$0.00
SUBTOTAL						\$1,350.00
Management Fee:						\$0.00
ELM TOTAL						\$1,350.00

## THIRD PARTY CHARGES

[Add new line to THIRD PARTY CHARGES](#)

SERVICE PROVIDED	MAN HOURS	PO#	TICKET #	CONTRACTOR	SUBTOTAL	Est.	AMOUNT
Testers	24.00		15952	Proflo	\$3,555.00		\$3,555.00
Heater				Conley	\$450.00	✓	\$450.00
Office trailer				Longhorn	\$135.00		\$135.00
Light towers			75425	Pinnacle	\$320.00		\$320.00
Boiler	10.00		111228	Miktye	\$2,411.35		\$2,411.35
Service rig	50.00		7013	Roll'n Well	\$10,000.00	✓	\$10,000.00
Tank truck			63970	Elite vac & Steam	\$4,185.00		\$4,185.00
Air trailer			48920315	Fire master	\$265.00		\$265.00
Tool hand			76785	Caliber	\$1,000.00		\$1,000.00
Mats (20)feet 2				Pinnacle	\$40.00	✓	\$40.00
MAN HOURS TOTAL					84.00		
SUBTOTAL							\$22,361.35
Management Fee							\$0.00
THIRD PARTY TOTAL							\$22,361.35

To add a line in text box use "alt enter"

Time	Well Abandonments
7:00	Start equipment. Temp -34 deg C North wind 0 km/h Held safety meeting with all personnel on location. Rig (5), Testers (2) Boiler (1), WSS (1) Discussed following: Slips, trips and falls, (watered froze in location)boot cleats, uneven location, spotters when backing up, pinch points, hand and body placement, cold working conditions, lease uneven, very slippery around well head. Stay hydrated, working over head, swing paths, muster points, drip trays 0 spillage of any fluids, picking up pipe watch for drift, steaming tubing joints. Check 2 air kills on rig, 1 on pump, air kills working properly, Check crown saver, working properly.
7:30	Pick up tag joint, start milling on BP 3 @ 1515, mill through, continue in to BP 4 @ 1520 m. Mill out BP, run mill down to 1530 m. Circulate bottoms up.
10:00	Rig out dead swivel, POOH with mill.
14:00	Hydraulic pump went on rig. Change pump to find that it was the chelsea (PTO) that went on rig. Rig manager went to meet someone to get new one. Pump water down well to get rid of some. Pump 50 m3 water down well.
16:00	Shut down for day for repair's <b>Next day operations. POOH with mill, run in with casing scraper.</b>



## DAILY REPORT

CLIENT:	Strategic Oil & Gas C/O Alvarez & Marsal		DATE :	March 13, 2023	
UWI:	300/L-44 60-10N 117-30W		Report #:	15	
PROJECT MANAGER:	Christopher Gagnon		AFE #:		
PROJECT NUMBER:	STRA050	AFE Amount:	\$335,391.53	% of AFE spent:	134%
Previous Costs to Date:	\$423,404.60	Current Days Costs:	\$26,468.30	Total Cost to Date:	\$449,872.90

**OPERATIONS SUMMARY:** POOH with mill, run in with casing scraper, circulate hole, POOH with scraper, run BP and packer set BP @ 1523 m, Set packer test BP to 7000 kPa. Solid test. Mix cement, pump circulate cement to BP. POOH with packer.

### SUPERVISION CHARGES

[Add new line to ELM CHARGES](#)

SERVICE PROVIDED	Number of units	UNIT	RATE	RESOURCE NAME	Site Supervisor	AMOUNT
Project Supervisor	1.00	day	\$1,200.00		Tim Schmidt	\$1,200.00
Mileage (Minimum Charge)	1.00	Day	\$150.00			\$150.00
						\$0.00
						\$0.00
SUBTOTAL						\$1,350.00
Management Fee:						\$0.00
ELM TOTAL						\$1,350.00

### THIRD PARTY CHARGES

[Add new line to THIRD PARTY CHARGES](#)

SERVICE PROVIDED	MAN HOURS	PO#	TICKET #	CONTRACTOR	SUBTOTAL	Est.	AMOUNT
Testers	24.00		15952	Proflo	\$2,445.00		\$2,445.00
Heater				Conley	\$450.00	✓	\$450.00
Office trailer				Longhorn	\$135.00		\$135.00
Light towers			75425	Pinnacle	\$320.00		\$320.00
Boiler	13.00		111229	Miktye	\$2,848.00		\$2,848.00
Service rig	70.00		7014	Roll'n Well	\$13,720.30		\$13,720.30
Tank truck			69371	Elite vac & Steam	\$3,895.00		\$3,895.00
Air trailer			48920315	Fire master	\$265.00		\$265.00
Tool hand			76785	Caliber	\$1,000.00		\$1,000.00
Mats (20)feet 2				Pinnacle	\$40.00	✓	\$40.00
MAN HOURS TOTAL					107.00	SUBTOTAL	\$25,118.30
Management Fee							\$0.00
THIRD PARTY TOTAL							\$25,118.30

To add a line in text box use "alt enter"

Time	Well Abandonments
7:00	Start equipment. Temp -34 deg C North wind 0.5km/h Held safety meeting with all personnel on location. Rig (5), Testers (2) Boiler (1), WSS (1) Discussed following: Slips, trips and falls, (watered froze in location) boot cleats, uneven location, spotters when backing up, pinch points, hand and body placement, cold working conditions, lease uneven, very slippery around well head. Stay hydrated, working over head, swing paths, muster points, drip trays 0 spillage of any fluids, picking up pipe watch for drift, steaming tubing joints. Check 2 air kills on rig, 1 on pump, air kills working properly, Check crown saver, working properly.
7:30	Change out chelsea PTO, get hydraulic systems to work.
7:45	Continue to pull out of hole with mill. Lay out mill, pick up casing scraper.
10:00	Run in with casing scraper down to 1530 m, Circulate bottoms up going forward. POOH with scraper.
14:00	Make up BP, packer, and mechanical ccl. Run in hole set BP @ 1523, set packer 1505 test BP to 7000 kPa. Solid test, Release packer. Mix 250 liters cement, Pour cement into tubing. Circulate cement to BP @ 1523 m. chase cement with 4.43 m3 fresh water.
21:00	POOH with packer. Shut down for night. <b>Next day operations. Run in with BP and packer to abandon Muskeg.</b>



# DAILY REPORT

CLIENT:	Strategic Oil & Gas C/O Alvarez & Marsal	DATE :	March 14, 2023
UWI:	300/L-44 60-10N 117-30W	Report #:	16
PROJECT MANAGER:	Christopher Gagnon	AFE #:	
PROJECT NUMBER:	STRA050	AFE Amount:	\$335,391.53
Previous Costs to Date:	\$449,872.90	% of AFE spent:	147%
		Current Days Costs:	\$43,813.67
		Total Cost to Date:	\$493,686.57

**OPERATIONS SUMMARY:** Run in with BP and packer, Set BP @ 1497. Set packer. Test BP and packer to 7000 kPa. Solid test, Release packer. Circulate 250 liters cement to BP. POOH change BP, RIH set BP @ 1419. set packer Test BP to 7000 kPa. Solid test. Release packer pull 1 joint.

## SUPERVISION CHARGES

Add new line to ELM CHARGES

SERVICE PROVIDED	Number of units	UNIT	RATE	RESOURCE NAME	Site Supervisor	AMOUNT
Project Supervisor	1.00	day	\$1,200.00		Tim Schmidt	\$1,200.00
Mileage (Minimum Charge)	1.00	Day	\$150.00			\$150.00
						\$0.00
						\$0.00
						\$0.00
SUBTOTAL						\$1,350.00
Management Fee:						\$0.00
ELM TOTAL						\$1,350.00

## THIRD PARTY CHARGES

Add new line to THIRD PARTY CHARGES

SERVICE PROVIDED	MAN HOURS	PO#	TICKET #	CONTRACTOR	SUBTOTAL	Est.	AMOUNT
Testers	24.00		15953	Proflo	\$2,445.00		\$2,445.00
Heater				Conley	\$450.00	✓	\$450.00
Office trailer				Longhorn	\$135.00		\$135.00
Light towers			75425	Pinnacle	\$320.00	✓	\$320.00
Boiler	14.50		111230	Miktye	\$2,936.05		\$2,936.05
Service rig	65.00		7335	Roll'n Well	\$11,925.62		\$11,925.62
Tank truck			69372	Elite vac & Steam	\$3,895.00	✓	\$3,895.00
Air trailer			48920315	Fire master	\$265.00		\$265.00
Tool hand			76785	Caliber	\$20,052.00		\$20,052.00
Mats (20)feet 2				Pinnacle	\$40.00	✓	\$40.00
MAN HOURS TOTAL					103.50		
						SUBTOTAL	\$42,463.67
						Management Fee	\$0.00
						THIRD PARTY TOTAL	\$42,463.67

To add a line in text box use "alt enter"

Time	Well Abandonments
7:00	Start equipment. Temp -18 deg C North wind 0.5km/h Held safety meeting with all personnel on location. Rig (5), Testers (2) Boiler (1), WSS (1) Discussed following: Slips, trips and falls, (watered froze in location )boot cleats, uneven location, spotters when backing up, pinch points, hand and body placement, cold working conditions, lease uneven, very slippery around well head. Stay hydrated, working over head, swing paths, muster points, drip trays 0 spillage of any fluids, picking up pipe watch for drift, steaming tubing joints. Check 2 air kills on rig, 1 on pump, air kills working properly, Check crown saver, working properly.
7:45	Make up BP 139mm setting tool, 5 joints 73mm tubing LHS packer, 151 joints 1 - 4 foot pup, 1 joint. Set BP @ 1497 mKB. Come off BP Set Packer @ 1488.53 mKB. Pressure test BP and packer to 7000 kPa for 10 min. Solid test. Bleed off tubing release packer. Mix 250 liters cement 17 bag cement, 148 liters water. Pour cement in to tubing. Pump 4.43 m3 fresh water behind cement. Cement in a balanced plug. Pull first 3 joints slowly to have cement drop out.
9:00	POOH with packer and setting tool. Lay out 8 joints. Stand packer, change out setting equipment new one and new BP.
13:30	Run in hole with BP, 2 joints 73mm tubing, packer, 73mm tubing to surface. Set BP @ 1419 mKB, Set packer 1399 mKB. Pressure test BP to 7000 kPa for 10 min. Solid test. Release packer.
16:30	Shut down for night. drain pump and lines. Lock pipe rams.
20:00	Next day operation. Mix cement circulate cement to BP @ 1419. POOH, run last BP.



# DAILY REPORT

CLIENT:	Strategic Oil & Gas C/O Alvarez & Marsal	DATE :	March 15, 2023
UWI:	300/L-44 60-10N 117-30W	Report #:	17
PROJECT MANAGER:	Christopher Gagnon	AFE #:	
PROJECT NUMBER:	STRA050	AFE Amount:	\$335,391.53
Previous Costs to Date:	\$493,686.57	Current Days Costs:	\$27,384.23
		% of AFE spent:	155%
		Total Cost to Date:	\$521,070.80

**OPERATIONS SUMMARY:** Mix up 250 liters cement, circulate cement to BP @ 1419 mKB. POOH with packer and setting tool. Run in with BP, set PB @ 1365 mKB. Pressure tested casing. Did not get pressure test. Pressure dropped from 7000 kPa to 0 in 30 sec. Pull 3 joints, run packer test well head. Solid test on well head. POOH with packer and setting tool.

## SUPERVISION CHARGES

Add new line to ELM CHARGES

SERVICE PROVIDED	Number of units	UNIT	RATE	RESOURCE NAME	Site Supervisor	AMOUNT
Project Supervisor	1.00	day	\$1,200.00		Tim Schmidt	\$1,200.00
Mileage (Minimum Charge)	1.00	Day	\$150.00			\$150.00
						\$0.00
						\$0.00
						\$0.00
SUBTOTAL						\$1,350.00
Management Fee:						\$0.00
ELM TOTAL						\$1,350.00

## THIRD PARTY CHARGES

Add new line to THIRD PARTY CHARGES

SERVICE PROVIDED	MAN HOURS	PO#	TICKET #	CONTRACTOR	SUBTOTAL	Est.	AMOUNT
Testers	24.00		15954	Proflo	\$2,445.00		\$2,445.00
Heater				Conley	\$450.00	✓	\$450.00
Office trailer				Longhorn	\$135.00		\$135.00
Light towers			75425	Pinnacle	\$320.00		\$320.00
Boiler	13.00		111231	Miktye	\$2,848.60		\$2,848.60
Service rig	62.50		7336	Roll'n Well	\$11,925.63		\$11,925.63
Tank truck			96373	Elite vac & Steam	\$3,605.00		\$3,605.00
Air trailer			48920315	Fire master	\$265.00		\$265.00
Tool hand			CS0056678	Tryton	\$4,000.00	✓	\$4,000.00
Mats (20)feet 2				Pinnacle	\$40.00	✓	\$40.00
MAN HOURS TOTAL					99.50		
SUBTOTAL							\$26,034.23
Management Fee							\$0.00
THIRD PARTY TOTAL							\$26,034.23

To add a line in text box use "alt enter"

Time	Well Abandonments
7:00	Start equipment. Temp -18 deg C North wind 0.5km/h Held safety meeting with all personnel on location. Rig (5), Testers (2) Boiler (1), Tool hand (1) WSS (1) Discussed following: Slips, trips and falls, (watered froze in location)boot cleats, uneven location, spotters when backing up, pinch points, hand and body placement, cold working conditions, lease uneven, very slippery around well head. Stay hydrated, working over head, swing paths, muster points, drip trays 0 spillage of any fluids, picking up pipe watch for drift, steaming tubing joints. Check 2 air kills on rig, 1 on pump, air kills working properly, Check crown saver, working properly. Mix up 250 liters cement, pour cement in tubing, circulate cement to tubing bottom in a balanced plug.
8:30	POOH with packer, remove packer, install new BP.
10:00	RIH with BP. Set BP @ 1365 mKB. Pressure test BP and casing to 7000 kPa. Pressure bled off to 0 kPa in 30 sec. Bump up casing again to 7000 kPa, surface casing
12:00	started to blow. Circulate well above BP over to fresh water 20 m3. Pull 3 joints, run packer with 1 joint back in. Set packer. Pressure test casing from surface to 14 meters. Solid test @ 7000 kPa. Bleed off pressure. release packer.
16:45	Pull out of hole with tubing.
17:30	Shut down for night. Drain pump lines, shut and lock pipe ram's.
19:00	Next day operations. Run in with packer and find casing leak,



# DAILY REPORT

CLIENT:	Strategic Oil & Gas C/O Alvarez & Marsal		DATE :	March 16, 2023	
UWI:	300/L-44 60-10N 117-30W		Report #:	18	
PROJECT MANAGER:	Christopher Gagnon		AFE #:		
PROJECT NUMBER:	STRA050	AFE Amount:	\$335,391.53	% of AFE spent:	166%
Previous Costs to Date:	\$521,070.80	Current Days Costs:	\$35,623.23	Total Cost to Date:	\$556,694.03
OPERATIONS SUMMARY:	POOH with setting tool for BP, Run in with packer. Run to 478 meters, set packer Could not get test on tubing side, test casing no test. Run in to 953mm Could not get test on tubing, nor casing. Run in to 1359 Set and test BP to 7000 kPa solid test, Move packer above casing patch, Could not get a PT on casing patch. Pull up to 763 m. Set packer test casing. Found good casing @ 33.57 m from surface.				

## SUPERVISION CHARGES

[Add new line to ELM CHARGES](#)

SERVICE PROVIDED	Number of units	UNIT	RATE	RESOURCE NAME	Site Supervisor	AMOUNT
Project Supervisor	1.00	day	\$1,200.00		Tim Schmidt	\$1,200.00
Mileage (Minimum Charge)	1.00	Day	\$150.00			\$150.00
						\$0.00
						\$0.00
						\$0.00
SUBTOTAL						\$1,350.00
Management Fee:						\$0.00
ELM TOTAL						\$1,350.00

## THIRD PARTY CHARGES

[Add new line to THIRD PARTY CHARGES](#)

SERVICE PROVIDED	MAN HOURS	PO#	TICKET #	CONTRACTOR	SUBTOTAL	Est.	AMOUNT
Testers	12.00		15955	Proflo	\$10,684.00		\$10,684.00
Heater				Conley	\$450.00	✓	\$450.00
Office trailer				Longhorn	\$135.00	✓	\$135.00
Light towers			75425	Pinnacle	\$320.00		\$320.00
Boiler			111232	Miktye	\$2,848.60		\$2,848.60
Service rig			7337	Roll'n Well	\$11,925.63		\$11,925.63
Tank truck			63974	Elite vac & Steam	\$3,605.00		\$3,605.00
Air trailer			6194	Fire master	\$265.00		\$265.00
Tool hand			CS0056678	Tryton	\$4,000.00	✓	\$4,000.00
Mats (20)feet 2				Pinnacle	\$40.00	✓	\$40.00
MAN HOURS TOTAL 12.00					SUBTOTAL		\$34,273.23
					Management Fee		\$0.00
					THIRD PARTY TOTAL		\$34,273.23

To add a line in text box use "alt enter"

Time	Well Abandonments
7:00	Start equipment. Temp -23 deg C North wind 4.km/h Held safety meeting with all personnel on location. Rig (5), Testers (2) Boiler (1), Tool hand (1) WSS (1) Discussed following: Slips, trips and falls, (watered froze in location) boot cleats, uneven location, spotters when backing up, pinch points, hand and body placement, cold working conditions, lease uneven, very slippery around well head. Stay hydrated, working over head, swing paths, muster points, drip trays 0 spillage of any fluids, picking up pipe watch for drift, steaming tubing joints. Check 2 air kills on rig, 1 on pump, air kills working properly, Check crown saver, working properly
7:45	Continue to POOH, Remove setting tool. install packer.
9:00	Run in hole with packer, set packer @ 478 meters. Pressure test down casing. Casing pressure tested to 7000 kPa, pressure bleed down to 1 mPa in 3 min. Surface casing has a blow. Rig in to tubing, pressure up to 7000 kPa, Pressure bleed down to 2 mPa in 3 min. Something in pump not holding pressure. Install valve in line with gauge. Still have same bleed off. <b>Check valve in pump shot, rebuild check valve.</b>
11:30	Release packer run down to 953 meters and reset packer. Pressure test casing side to 7000 kPa. Fluid flowed out of surface casing. Shut in surface casing and casing will pressure test. Open surface casing, casing pressure drops right a way. Try to pressure test tubing, tubing pressured drop from 7000 kPa to 0 kPa in 3 min.
15:00	Release packer , run packer down to 1359 mKB. Pressure test BP @ 1365 to 1359 with packer. Solid test of 7000 kPa for 10 min. Release packer move packer up to 1342 mKB. Set packer. Pressure test from bp @ 1365 to 1342.02 mKB. Pressure bled down from 7000 kPa to 0 kPa 2.4 mins.
15:40	Release packer, pull out of hole up to 763 mKB. Set packer, try to pressure test casing. Pressure up to 7000 kPa, Surface casing start to flow. Casing pressure drop from 7000 to 2000 kPa in 1 min. Bleed off casing
16:50	Release packer, pull packer to 574 mKB. Set packer, test casing to 7000 kPa. As soon as started to pressure up on casing surface casing vent started to flow.
17:10	Release packer, pull packer to 384.48 mKB. Set packer, test casing to 7000 kPa. Got pressure to 7000 kPa, bleed down to 2 mPa 1 min. Surface casing vent started to flow.
17:45	Release packer, pull packer to 195.17 mKB. Set packer, test casing to 7000 kPa. Got pressure to 7000 kPa, bleed down to 2 mPa 1 min. Surface casing vent started to flow.
18:00	Release packer, pull packer to 100.08 mKB. Set packer, test casing to 7000 kPa. Got pressure to 5000 kPa, Surface casing vent flowing water.
18:20	Release packer, pull 5 joints, set packer @ 52.62 m. Try to test casing. No test, surface casing flowing.
18:30	Release packer pull 2 joints set packer @ 33.57 m. Got solid test on casing. Release packer. Pull out of hole.
19:30	Shut down for night. Drain pump lines, lock ram's
	<b>Next day operations. Run in opened, circulate cement to BP.</b>





# DAILY REPORT

CLIENT:	Strategic Oil & Gas C/O Alvarez & Marsal		DATE :	March 17, 2023	
UWI:	300/L-44 60-10N 117-30W		Report #:	19	
PROJECT MANAGER:	Christopher Gagnon		AFE #:		
PROJECT NUMBER:	STRA050	AFE Amount:	\$335,391.53	% of AFE spent:	176%
Previous Costs to Date:	\$556,694.03	Current Days Costs:	\$34,384.43	Total Cost to Date:	\$591,078.46
OPERATIONS SUMMARY:	Run in hole with 73mm opened to BP @ 1365 mKb, circulate cement to BP. POOH Run in with 2nd BP and packer, set BP @ 1345 mKB. PT BP to 7000 kPa. Solid test, Mix 250 liters cement, Circulate cement to BP. POOH and find bottom of bad casing. Good casing to last test @ 426 mKb				

## SUPERVISION CHARGES

[Add new line to ELM CHARGES](#)

SERVICE PROVIDED	Number of units	UNIT	RATE	RESOURCE NAME	Site Supervisor	AMOUNT
Project Supervisor	1.00	day	\$1,200.00		Tim Schmidt	\$1,200.00
Mileage (Minimum Charge)	1.00	Day	\$150.00			\$150.00
						\$0.00
						\$0.00
						\$0.00
SUBTOTAL						\$1,350.00
Management Fee:						\$0.00
ELM TOTAL						\$1,350.00

## THIRD PARTY CHARGES

[Add new line to THIRD PARTY CHARGES](#)

SERVICE PROVIDED	MAN HOURS	PO#	TICKET #	CONTRACTOR	SUBTOTAL	Est.	AMOUNT
Heater				Conley	\$450.00	✓	\$450.00
Office trailer				Longhorn	\$135.00	✓	\$135.00
Light towers			75425	Pinnacle	\$320.00		\$320.00
Boiler	13.50		111233	Miktye	\$2,861.15		\$2,861.15
Service rig	62.50		7338	Roll'n Well	\$11,925.63		\$11,925.63
Tool hand			CS0056678	Tryton	\$4,000.00	✓	\$4,000.00
Mats (20)feet 2				Pinnacle	\$40.00	✓	\$40.00
Tank truck			96375	Elite vac & Steam	\$3,895.00		\$3,895.00
Fluid disposal			RLFST-001071	Secure	\$5,797.65		\$5,797.65
Move out 400 bbl tank			16257	Radar	\$3,610.00		\$3,610.00
MAN HOURS TOTAL 76.00					SUBTOTAL		\$33,034.43
					Management Fee		\$0.00
					THIRD PARTY TOTAL		\$33,034.43

To add a line in text box use "alt enter"

Time	Well Abandonments
7:00	Start equipment. Temp -23 deg C North wind 4.km/h Held safety meeting with all personnel on location. Rig (5) Boiler (1), Tool hand (1) WSS (1) Discussed following: Slips, trips and falls, (watered froze in location)boot cleats, uneven location, spotters when backing up, pinch points, hand and body placement, cold working conditions, lease uneven, very slippery around well head. Stay hydrated, working over head, swing paths, muster points, drip trays 0 spillage of any fluids, picking up pipe watch for drift, steaming tubing joints. Check 2 air kills on rig, 1 on pump, air kills working properly, Check crown saver, working properly.
7:45	Run in hole with 73mm tubing to BP @ 1365 mKB. Mix 250 liters cement, Pour cement into tubing. Pump 3.96 m3 water for a balanced cement plug on BP @ 1365 mKB. (20.1 meters plug.)
11:30	Pull out of hole with tubing.
13:30	Make up BP and packer, run in hole to 1345 mKB.
16:15	Set BP and set packer. Pressure test BP to 7000 kPa. Solid test Mix up 250 liters cement pour cement in tubing. Pump 3.9 m3 fresh water to get a balanced plug of cement on BP (20.1 meter plug.)
17:10	POOH with 20 joints, lay out tubing. Set packer @ 1004 meters test down tubing to 7000 kPa. Solid test, release packer.
17:30	POOH with 40 joints, lay out tubing. Set packer @ 758.16 meters test down tubing to 7000 kPa. Solid test, release packer.
18:10	POOH with 35 joints, lay out tubing. Set packer @ 426 meters test down tubing to 7000 kPa. Solid test, release packer Let packer hang for night.
19:30	Shut ram's drain pump and lines. Fuel up equipment.
	Next day operations find bottom of bad casing. Cement if necessary



# DAILY REPORT

CLIENT:	Strategic Oil & Gas C/O Alvarez & Marsal		DATE :	March 18, 2023	
UWI:	300/L-44 60-10N 117-30W		Report #:	20	
PROJECT MANAGER:	Christopher Gagnon		AFE #:		
PROJECT NUMBER:	STRA050	AFE Amount:	\$335,391.53	% of AFE spent:	183%
Previous Costs to Date:	\$591,078.46	Current Days Costs:	\$23,643.23	Total Cost to Date:	\$614,721.69

**OPERATIONS SUMMARY:** Look for casing leak. Found leak from 43.06 - 33.56 m. Contacted OROGO, able to leave well as is. Rig out all equipment.

## SUPERVISION CHARGES

Add new line to ELM CHARGES

SERVICE PROVIDED	Number of units	UNIT	RATE	RESOURCE NAME	Site Supervisor	AMOUNT
Project Supervisor	1.00	day	\$1,200.00		Tim Schmidt	\$1,200.00
Mileage (Minimum Charge)	1.00	Day	\$150.00			\$150.00
						\$0.00
						\$0.00
						\$0.00
SUBTOTAL						\$1,350.00
Management Fee:						\$0.00
ELM TOTAL						\$1,350.00

## THIRD PARTY CHARGES

Add new line to THIRD PARTY CHARGES

SERVICE PROVIDED	MAN HOURS	PO#	TICKET #	CONTRACTOR	SUBTOTAL	Est.	AMOUNT
Heater				Conley	\$450.00	✓	\$450.00
Office trailer				Longhorn	\$135.00	✓	\$135.00
Light towers			75425	Pinnacle	\$320.00		\$320.00
Boiler	13.50		111234	Miktye	\$2,561.15		\$2,561.15
Service rig	62.50		7339	Roll'n Well	\$13,085.63		\$13,085.63
Tool hand			CS0056678	Tryton	\$1,806.45		\$1,806.45
Mats (20)feet 2				Pinnacle	\$40.00	✓	\$40.00
Tank truck			96376	Elite vac & Steam	\$3,895.00	✓	\$3,895.00
							\$0.00
MAN HOURS TOTAL					76.00	SUBTOTAL	\$22,293.23
						Management Fee	\$0.00
						THIRD PARTY TOTAL	\$22,293.23

To add a line in text box use "alt enter"

Time	Well Abandonments
7:00	Start equipment. Temp -23 deg C North wind 4.km/h Held safety meeting with all personnel on location. Rig (5) Boiler (1), Tool hand (1) WSS (1) Discussed following: Slips, trips and falls, (watered froze in location)boot cleats, uneven location, spotters when backing up, pinch points, hand and body placement, cold working conditions, lease uneven, very slippery around well head. Stay hydrated, working over head, swing paths, muster points, drip trays 0 spillage of any fluids, picking up pipe watch for drift, steaming tubing joints. Check 2 air kills on rig, 1 on pump, air kills working properly, Check crown saver, working properly
7:45	Pull 20 joints, lay out tubing. Set packer @ 307 meters test down tubing to 7000 kPa. Solid test, release packer.
8:15	Pull 17 joints, lay out tubing. Set packer @ 142 meters test down tubing to 7000 kPa. Solid test, release packer.
8:30	Pull 10 joints, lay out tubing. Set packer @ 52.6 meters test down tubing to 7000 kPa. Solid test, release packer.
8:45	Pulled 1 joint set packer good test.
9:00	Bad casing from 43.06 m to 33.56 meters.
9:00	WOO from OROGO, we are able to leave well just the way it is.
13:00	Rig out equipment.
	<b>WELL IS READY TO CUT AND CAP</b>



## DAILY REPORT

CLIENT:	Strategic Oil & Gas C/O Alvarez & Marsal		DATE :	March 23, 2023	
UWI:	300/L-44 60-10N 117-30W		Report #:	21	
PROJECT MANAGER:	Christopher Gagnon		AFE #:		
PROJECT NUMBER:	STRA050	AFE Amount:	\$335,391.53	% of AFE spent:	196%
Previous Costs to Date:	\$614,721.69	Current Days Costs:	\$43,990.94	Total Cost to Date:	\$658,712.63
OPERATIONS SUMMARY:	Checked well for pressure 0kpa, thawed well, cut off well at 2m below ground, installed sign, capped well, backed filled. Well complete.				

### SUPERVISION CHARGES

[Add new line to ELM CHARGES](#)

SERVICE PROVIDED	Number of units	UNIT	RATE	RESOURCE NAME	Site Supervisor	AMOUNT
Project Supervisor	0.50	day	\$1,200.00		Don Sadoway	\$600.00
Mileage (Minimum Charge)	0.50	Day	\$150.00			\$75.00
						\$0.00
						\$0.00
						\$0.00
SUBTOTAL						\$675.00
Management Fee:						\$0.00
ELM TOTAL						\$675.00

### THIRD PARTY CHARGES

[Add new line to THIRD PARTY CHARGES](#)

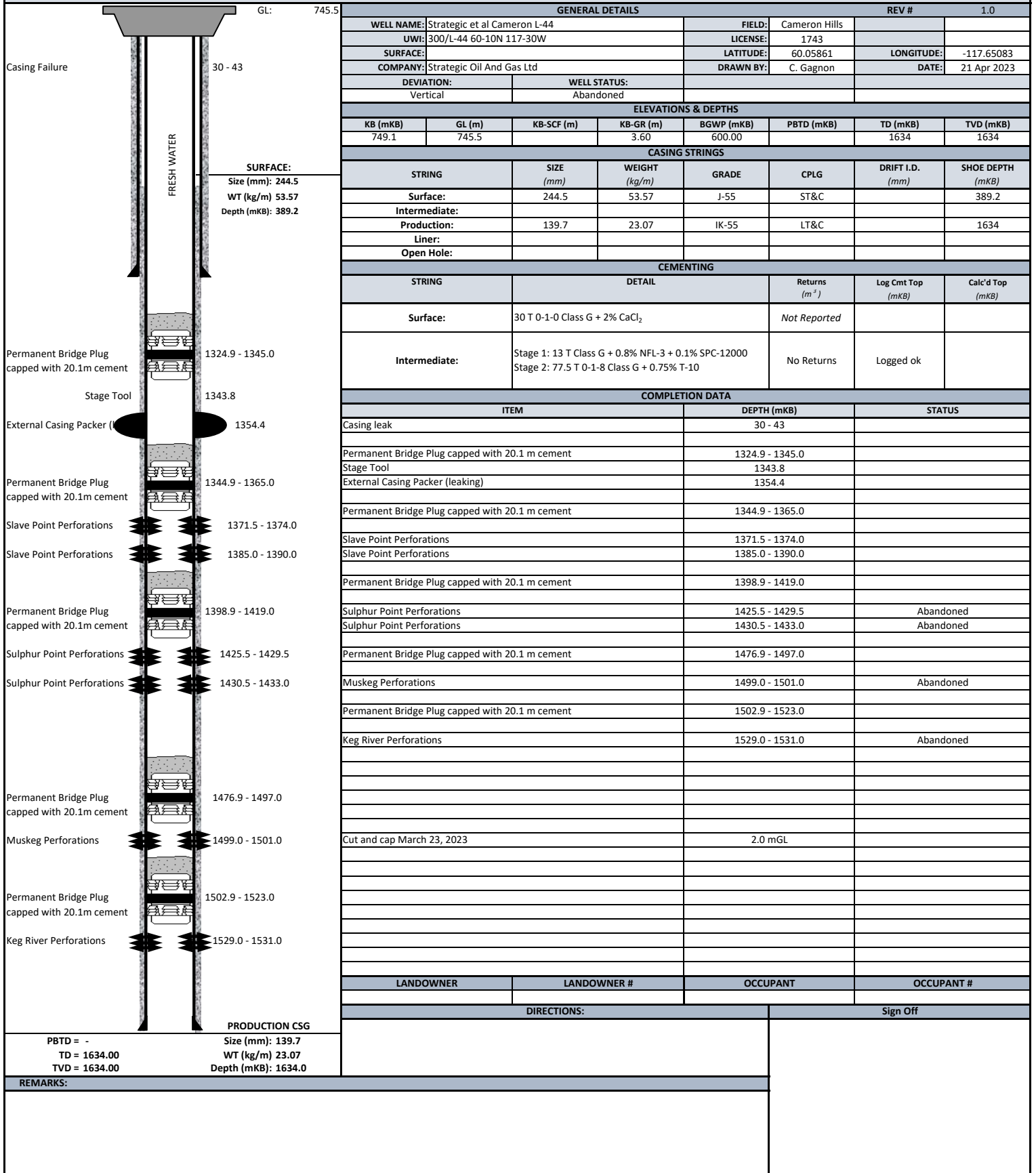
SERVICE PROVIDED	MAN HOURS	PO#	TICKET #	CONTRACTOR	SUBTOTAL	Est.	AMOUNT
Jet cutter	12.00			Innovative	\$8,000.00	✓	\$8,000.00
vac truck	17.00		49376	Attack Oilfield	\$5,010.00		\$5,010.00
Road Radio			7006382	Red Rabbit	\$161.00		\$161.00
Fuel for equipment			100034	Bluewave	\$30,144.94		\$30,144.94
							\$0.00
							\$0.00
MAN HOURS TOTAL					29.00		
SUBTOTAL							\$43,315.94
Management Fee							\$0.00
THIRD PARTY TOTAL							\$43,315.94

To add a line in text box use "alt enter"

Time	Well Abandonments
12:00	Moved in cut and cap crew. Held safety meeting and pre job discussion. Reviewed JSA and SOP for cut and cap of well. Issued safe work permit to cutting crew and hydro-vac. Medic reviewed ERP with crew and posted ERP. Rigged in services. Checked wellhead pressure. Casing - 0kpa. Installed bubble test equipment with 3/8 hose in 1" of water. No bubbles observed in 10 minutes. Innovative water jet cut through production and surface casing 2m meters down from surface grade. Had hydro-vac clean soil on one side of the well. Had to make 2 rotations with cutter to cut through 2 casings and 1 conductor pipe. Removed cut off wellhead. Installed casing cap assembly for production and surface casing with LSD & well licence number and was buried with top soil. Backfilled hole from wellhead removal. Had hydro-vac place a hole 1m north of well center to a depth of 1m. Installed wellsite post and sign facing north, and cemented into place. Note: No visible staining on location. No contamination observed around the wellhead. Note: 16" Conductor pipe was removed with wellhead. Pics were taken before and after and were sent with report.
16:00	Moved off location



# FINAL WELL DIAGRAM





## CAMERON L-44



L-44 Wellhead



Vented cap



Wellhead pulled out of ground



Sign placed on north side of the wellhead and facing north. Note tubing has been removed