



April 10, 2023

Office of the Regulator of Oil and Gas Operations

PO Box 1320, Yellowknife, NT X1A 2L9

Pauline_DeJong@gov.nt.ca; Mike_Martin@gov.nt.ca; orogo@gov.nt.ca

RE: OROGO Final Operations Report – Cameron F-75 – OA-2018-003-SOG

As you are aware, on January 28, 2020 (the “**Receivership Date**”), the Court of Queen’s Bench of Alberta (the “**Court**”) granted an Order pursuant to section 243 of the Bankruptcy and Insolvency Act, RSC 1985, c. B-3 and section 13(2) of the Judicature Act, RSA 2000, c. J-2, whereby Alvarez and Marsal Canada Inc. (the “**NWT Receiver**”) was appointed Receiver, without security, of all of the current and future assets, undertakings and properties of Strategic Oil and Gas Ltd. and Strategic Transmission Ltd. (collectively, “**Strategic**” or the “**Company**”) situated in the Northwest Territories (the “**NWT Property**”). For further information on the Receivership proceedings, please visit the NWT Receiver’s website at: www.alvarezandmarsal.com/sog.

The NWT Receiver, the Government of the Northwest Territories and ELM Inc. (“**ELM**”) entered into an abandonment agreement for the purposes of completing the abandonment work required by the office of the Regulator of Oil and Gas Operations (“**OROGO**”).

The NWT Receiver respectfully endorses the submission made by ELM to OROGO for the purposes of this final operations report.

Should you have any questions or require further information, please contact the undersigned at dmacrae@alvarezandmarsal.com.

Yours truly,

**Alvarez & Marsal Canada Inc., in its capacity as Receiver of
Strategic Oil & Gas Ltd. and Strategic Transmission Ltd.’s NWT Properties
and not in its personal or corporate capacity**

cc: Christopher Gagnon Christopher@elminc.ca

Encl.

April 10, 2023

Office of the Regulator of Oil and Gas Operations

PO Box 1320
Yellowknife NT, X1A 2L9

By Email: orogo@gov.nt.ca

RE: Final Operations Report – Cameron F-75 (ACW-2022-SOG-F-75-WID 1971)

ELM Inc, acting on behalf of Alvarez & Marsal Canada Inc in their capacity as the receiver for Strategic Oil and Gas Ltd submits the following documents as part of the final reporting for this well.

1. Well Termination Record
2. Morning Reports
3. Final well schematic
4. Photographs from cut and cap operation.

The change of well status form will be sent as a separate attachment.

Should you have any questions or require further information, please contact the undersigned at christopher@elminc.ca

Sincerely,

Christopher Gagnon, EIT

ELM Inc, acting as a consultant to Alvarez & Marsal Canada Inc

WELL TERMINATION RECORD

INSTRUCTIONS:

1. Complete both pages.
2. Send one electronic copy of this form and supporting technical documentation by email to orogo@gov.nt.ca. If you wish to communicate with OROGO in hard copy, please do so using the courier address found at www.orogo.gov.nt.ca.

WELL INFORMATION

Well Name	Strategic et al Cameron F-75	Operator	Strategic Oil & Gas Ltd
Well Type	Development Well (if Other, specify _____)	Contractor	Elm Inc
Well Identifier	1971	Current Well Status	Abandoned

RELATED LICENCES AND AUTHORIZATIONS

Operating Licence No.	NWT-OL-2014-007	Operations Authorization	OA - 2018-003-SOG
PRA Licence No.	Production Licence 13	Approval to Alter Condition of Well	ACW - 2022-SOG-F-75-WID 1971

LOCATION INFORMATION

Coordinates Datum: NAD83 (if Other, please specify _____)

Surface	Lat 60 ° 4 ' 29 "	Long 117 ° 29 ' 11 "
Bottom Hole	Lat 60 ° 4 ' 29 "	Long 117 ° 29 ' 11 "

Region: South Sl Unit F Section 75 Grid 60-10N 117-15W

ACTIVITY INFORMATION

Target Formation(s)	Sulphur Point	Field/Pool(s)	Cameron Hills /
Elevation KB/RT	778.8 m	Ground Level / Seafloor	773.7 m
Spud/Re-entry Date	11 days	Total Depth	1463.0 m KB
Rig Release Date	February 9, 2023	Total Vertical Depth	1463.0 m KB

CASING AND CEMENTING PROGRAM

O.D. (mm)	Weight (kg/m)	Grade	Setting Depth (m KB)	Cementing (m³)
219.1	35.7	J-55	436	25.8
139.7	20.8	J-55	1463	31.4

--	--	--	--	--	--	--

PLUGGING PROGRAM

Type of Plug	Interval (m KB)	Felt	Setting Depth (m KB)	Cementing (m ³)
Bridge	1374.8-1415.0	No	1415.0	0.5
Cement	22.15-180	Yes	22.15	4.6
Select	-	Select		
Select	-	Select		

PERFORATION

Interval (m KB)	Comments
1422.5-1426.0	Sulphur Point - Abandoned
61.82-137.53	Casing Failure. Balanced cement across the failure, then pumped cement through the failure and to surface via the vent.
-	
-	


OTHER

Lost Circulation/Overpressure Zones	
Equipment Left on Site (Describe)	None
Provision for Re-entry (Describe and attach sketch)	Vented cap 2 meters below ground level
Other Downhole Completion/Suspension	Sulphur point was suspended with retrievable bridge plug and cement. Set the permanent plug directly above.
Additional Comments	

"I certify that the information provided on this form is true and correct"

Name	Duncan MacRae	Phone	(403)538-7514Ext
Title	Vice President	E-Mail	dmacrae@alvarezandmarsal.com
Operator	Alvarez & Marsal Canada Inc., in its capacity as receiver of Strategic Oil & Gas's NWT Property		
Signature		Date	April 11, 2023
	Responsible Officer of Company		

NOTE: This sheet is protected. Unprotect the sheet to make changes and protect once complete.

 <div>DAILY REPORT</div>			
CLIENT:	Strategic Oil & Gas C/O Alvarez & Marsal	DATE:	January 12, 2023
UWI:	300/F-75 60-10N 117-15W	Report #:	1
PROJECT MANAGER:	Christopher Gagnon	AFE #:	

Proj # / AFE / Job Number:	STRA050	AFE Amount:	\$171,488.10	\$285,091.62
Project Descriptor:	Well Abandonments			

Cost Coding	Surface Location	60.074720, -117.486400	AREA	Cameron Hills NWT
	License	1971		

EXECUTIVE SUMMARY:

NWT App: ACW-2022-SOG-F-75-WID 1971

Day 1: Move in service rig, tried running bond log, tagged obstruction. Ran tubing, cannot make hole. Office reviewed files, there is a shallow bridge plug. Rigged out.

Day 2: Move over and spot equipment.

Day 3: Rig up service rig and related equipment.

Day 4: Standby. Waiting on snubbing unit to arrive.

Day 5: Made up twister bit, ran in the well and drilled out to 21 meters. Bit got stuck, worked bit and pulled from the well and inspected.

Day 6: Ran in well with tricone bit and drilled out the bridge plug, rigged out snubbers and ran in the well with scraper. Reverse circulate and monitor the pressure on surface casing vent. Pulled 5 joints of tubing and secured the well.

Day 7: in 5-joints and circulated the well to fresh water, pulled scraper from the well. Ran in the well with a RBL. Ran packer and started to isolate holes in the casing.

Day 8: Continued to locate bad casing, make up and run in the well with BP, set and pressure test. Circulated down and balance 500 liter cement plug on the permanent bridge plug. Pulled 46-joints from the well. SDFN

Day 9: Pulled tubing and the plug setting gear from the well, ran in to 180.0 mKB and landed the tubing hanger. Broke circulation for clean up and circulated dye to calculate circulation time and cement volumes. Cementers broke down and did not show up.

Day 10: Ran in the well with 5-joints of tubing, balanced 2.3 m3 cement plug from 180 m to surface. Pulled tubing from the well, washed up BOP's and landed the tubing hanger. Pumped an additional 2.3 m3 down the casing and up the casing vent.

Day 11: Tag cement, pressure test and rig out service rig and related equipment. Prepare to move to A-73 well.

Day 12: Checked well for pressure 0kpa, thawed well, cut off well at 2m below ground, installed sign, capped well, backed filled. Well complete.



DAILY REPORT

CLIENT:	Strategic Oil & Gas C/O Alvarez & Marsal		DATE :	January 12, 2023	
UWI:	300/F-75 60-10N 117-15W		Report #:	1	
PROJECT MANAGER:	Christopher Gagnon		AFE #:		
PROJECT NUMBER:	STRA050	AFE Amount:	\$171,488.10	% of AFE spent:	17%
Previous Costs to Date:	\$0.00	Current Days Costs:	\$29,777.50	Total Cost to Date:	\$29,777.50
OPERATIONS SUMMARY:	Move in to wellsite, spot and start rigging in equipment.				

SUPERVISION CHARGES

[Add new line to ELM CHARGES](#)

SERVICE PROVIDED	Number of units	UNIT	RATE	RESOURCE NAME	Site Supervisor	AMOUNT
Project Supervisor	1.00	day	\$1,200.00		Warren Watson	\$1,200.00
Mileage (Minimum Charge)	1.00	Day	\$150.00			\$150.00
						\$0.00
						\$0.00
						\$0.00
SUBTOTAL						\$1,350.00
Management Fee:						\$0.00
ELM TOTAL						\$1,350.00

THIRD PARTY CHARGES

[Add new line to THIRD PARTY CHARGES](#)

SERVICE PROVIDED	MAN HOURS	PO#	TICKET #	CONTRACTOR	SUBTOTAL	Est.	AMOUNT
Service Rig	55.00		SR4-869	WSK Well Services	\$18,007.50		\$18,007.50
Test Vessel	22.00		15860	Proflo	\$2,295.00		\$2,295.00
Air Hand	11.00		H2S00004828	Firemaster	\$1,020.00		\$1,020.00
Water Truck	8.00		69336	Elite Vac & Steam	\$3,605.00		\$3,605.00
Flameless Heater	N/A		6	Conley max	\$0.00		\$0.00
Light Tower	N/A		7	Pinnacle	\$0.00		\$0.00
Mobile Consultant Shack	N/A		8	Longhorn Rentals	\$0.00		\$0.00
E-Line unit	12.00		9	Titanium	\$3,500.00		\$3,500.00
MAN HOURS TOTAL					108.00		
SUBTOTAL							\$28,427.50
Management Fee							\$0.00
THIRD PARTY TOTAL							\$28,427.50

To add a line in text box use "alt enter"

Time	Well Abandonments
06:30	Arrived on location bump test and sweep location with 4 head lel monitor, recorded spills and other lease deficiencies, Weather Cloudy, Light Breeze -6 C
07:00	Held Safety and Operational meeting with WSK Rig Crew, Proflo testing, Air Hand personal discussed following: Slips, trips and falls, (watered froze in location)boot cleats/studs required, uneven location, spotters when backing up, pinch points, hand and body placement, cold working conditions, very slippery around well head, possible muddy location(depending on temperature).
07:30	Stay hydrated, good visual of spotter when backing up, working over head, swing paths, muster points, High pressure lines, chemical (H2S scavenger). Start and warm up equipment (spotted on location last night), tarped in wellhead and put steam on well head, early this morning Rigged in service rig and all support equipment. SICP - Dead, sample for H2S 0% H2S.
08:00	Moved in spotted E-Line unit, held tail gate meeting with all personal on location, discussed following: muster points, pinch points, stay clear of under work floor when working above, icy working conditions, high floor, beaware of your surroundings, 3 point contact when lifting heavy equipment onto the floor. Rigged out flowing top section and laid down, rigged in E-line adaptor flange onto tubing head and tightened down Make up Radial Bond Log tool, power up tool string (all good), ran in hole tagged solid 10.0 m +/- into wellbore, possible chance wellbore is frozen Ran in steam line to top of obstruction, steamed on obstruction for 30 minutes with no forward movement
09:30	Decision was made to clean up location and release E-line unit Rigged in high pressure pump line to BOP stump, filled and completed sump test on BOP stack, 1400 kPa(Low), 21000 kPa(high) on blind rams, held test on low/high for 10 minutes(solid test) rigged in test pup joint with tightened in 73.0 mm stabbing valve, closed pipe rams filled and completed pressure test on tubing rams/stabbing valve 1400 kPa(low), 21000 kPa(high), held test on low/high for 10 minutes(solid test), closed annular test 1400 kPa (low), 7000 kPa(high) on annular bag assembly (solid test) Rigged and tightened down BOP stack, well head ring test was performed 1400 kPa(low), 7000 kPa high (solid test) (no Tbg hanger found on location)lower than usual high pressure test had to be preformed. Rigged in drill out pack off head, picked up 1-73.0 mm Jt Tbg, stabbed through pack off head, installed saw tooth coupling on bottom of Jt, ran in hole Rigged in drill out pack off head, picked up 1-73.0 mm Jt Tbg, stabbed through pack off head, installed saw tooth coupling on bottom of Jt, ran in hole Rigged in circulating lines and forward circulated on wellbore for 10 minutes @ 250 L/min 20* C water Picked up 2nd Jt of Tbg and attempted to run in hole tagged 1.0 m in on 2nd Jt, rotated and forward circulated on obstruction with no forward movement for 1 hour. Called office and discussed findings, office contacted back and had found recorded BP and cement 20 m from surface, will have to re-program wellbore abandonment Decision was made to shut down abandonment on this wellbore and move service rig and all support equipment to 300/A68 60-10N 117-15W Rig out BOP stack, rig in flowing well top section and tighten down
17:30	Rig out service rig and all support equipment clean up location, prep equipment to move in the morning Note: NWT Government personal on location Land & Water Board, full inspection of location and equipment no infractions. Wellbore is shut down, until reprogramming can be completed and signed off on. Note: Office reviewed well file boxes and OROGO database. Found a report from 2011 when the previous operator set a shallow bridge plug.



DAILY REPORT

CLIENT:	Strategic Oil & Gas C/O Alvarez & Marsal		DATE :	January 31, 2023	
UWI:	300/F-75 60-10N 117-15W		Report #:	2	
PROJECT MANAGER:	Christopher Gagnon		AFE #:		
PROJECT NUMBER:	STRA050	AFE Amount:	\$171,488.10	% of AFE spent:	19%
Previous Costs to Date:	\$29,777.50	Current Days Costs:	\$2,000.00	Total Cost to Date:	\$31,777.50

OPERATIONS SUMMARY: Moved in, measure out and spot equipment. Start the rig up.

SUPERVISION CHARGES

Add new line to ELM CHARGES

SERVICE PROVIDED	Number of units	UNIT	RATE	RESOURCE NAME	Site Supervisor	AMOUNT
Project Supervisor	0.00	day	\$1,200.00		Shannon Cole	\$0.00
Mileage (Minimum Charge)	0.00	Day	\$150.00			\$0.00
Office trailer	0.00	Day	\$125.00			\$0.00
						\$0.00
						\$0.00
SUBTOTAL						\$0.00
Management Fee:						\$0.00
ELM TOTAL						\$0.00

THIRD PARTY CHARGES

Add new line to THIRD PARTY CHARGES

SERVICE PROVIDED	MAN HOURS	PO#	TICKET #	CONTRACTOR	SUBTOTAL	Est.	AMOUNT
Vacuum Truck (Standby)			108934	Miktye Trucking	\$2,000.00		\$2,000.00
							\$0.00
							\$0.00
							\$0.00
							\$0.00
							\$0.00
MAN HOURS TOTAL		0.00					\$2,000.00
SUBTOTAL							\$2,000.00
Management Fee							\$0.00
THIRD PARTY TOTAL							\$2,000.00

To add a line in text box use "alt enter"

Time	Well Abandonments
14:30	Moved to the wellsite. Completed visual wellsite inspection, measured out leased size for spacing prior to arriving to the wellsite. Traveled to location with Service rig and support equipment. Parked on site and held pre-job safety meeting, issued safe work permits, fire and explosion reviewed, signed and posted emergency response and transportation plans. Some of the topics were, very uneven ground all around the Westside of the wellsite, spotting matting, moving equipment on location, use spotters, icy surfaces, conected location and trip hazards.
16:00	Spotted rig mats and junk basket.
17:00	Spotted and started to rig in equipment. Fueled and winterized equipment.
18:00	SDFN



DAILY REPORT

CLIENT:	Strategic Oil & Gas C/O Alvarez & Marsal		DATE :	February 1, 2023	
UWI:	300/F-75 60-10N 117-15W		Report #:	3	
PROJECT MANAGER:	Christopher Gagnon		AFE #:		
PROJECT NUMBER:	STRA050	AFE Amount:	\$171,488.10	% of AFE spent:	32%
Previous Costs to Date:	\$31,777.50	Current Days Costs:	\$23,542.50	Total Cost to Date:	\$55,320.00
OPERATIONS SUMMARY:	Continue rigging in equipment and off-load 150 joints of tubing on the ground				

SUPERVISION CHARGES

[Add new line to ELM CHARGES](#)

SERVICE PROVIDED	Number of units	UNIT	RATE	RESOURCE NAME	Site Supervisor	AMOUNT
Project Supervisor	1.00	day	\$1,200.00		Shannon Cole	\$1,200.00
Mileage (Minimum Charge)	1.00	Day	\$150.00			\$150.00
Office trailer	1.00	Day	\$125.00			\$125.00
						\$0.00
						\$0.00
SUBTOTAL						\$1,475.00
Management Fee:						\$0.00
ELM TOTAL						\$1,475.00

THIRD PARTY CHARGES

[Add new line to THIRD PARTY CHARGES](#)

SERVICE PROVIDED	MAN HOURS	PO#	TICKET #	CONTRACTOR	SUBTOTAL	Est.	AMOUNT
Service rig	55.00		23020102ELM	Triumph Well Servicing	\$9,840.00	✓	\$9,840.00
Boiler	11.00		109095	Miktye Trucking	\$1,732.50		\$1,732.50
Air Hand	11.00		1	Fire Master	\$990.00		\$990.00
Testers	22.00		19629	Stack Production Testing	\$3,050.00		\$3,050.00
Picker	12.00		15400	Rader Trucking	\$4,455.00		\$4,455.00
Vacuum Truck (standby)			108934	Miktye Trucking	\$2,000.00		\$2,000.00
MAN HOURS TOTAL		111.00			SUBTOTAL		\$22,067.50
Management Fee							\$0.00
THIRD PARTY TOTAL							\$22,067.50

To add a line in text box use "alt enter"

Time	Well Abandonments
07:30	Traveled to wellsite, completed LEL sweeps and walked location, looking for hazards. The wellsite is slopes and is very uneven, causing equipment to get stuck and has making rigging in the service rig slightly more challenging. -35 with a slight breeze.
08:00	Held pre-job safety meeting, reviewed safe work permits to all services, reviewed, posted emergency response plan and fire and explosion. Built hazard assessments, some of the topics included frost bite and warm up breaks, use of spotters, good hand signals, communication, clear directions, use of 2-way radios, rig inspection, 3-point contact, house keeping and driving on ice roads.
08:30	Rigged in service rig and related equipment.
10:45	Completed 10-minute bubble test on surface casing vent. No bubbles.
11:00	Stump tested class III BOP stack pipes and blinds, safety valve and spool to 1.4 low and 21.0 MPa 10-minutes each test. Pressure tested the annular to 1.4 MPa low and 7.0 MPa high and held for 10-minutes. Removed the top section from the wellhead and installed BOP stack. Pressure tested pipe rams, ring groove to 1.4 low and 21 MPa high and held each test for 10-minutes each. Rigged in the work floor and installed 1500 series studs. Ready for snubbing unit. Well is secure.
17:00	Moved in picker and offloaded 150 joints of tubing.
18:00	Fueled and winterized equipment. SDFN



DAILY REPORT

CLIENT:	Strategic Oil & Gas C/O Alvarez & Marsal		DATE :	February 2, 2023	
UWI:	300/F-75 60-10N 117-15W		Report #:	4	
PROJECT MANAGER:	Christopher Gagnon		AFE #:		
PROJECT NUMBER:	STRA050	AFE Amount:	\$171,488.10	% of AFE spent:	43%
Previous Costs to Date:	\$55,320.00	Current Days Costs:	\$17,611.00	Total Cost to Date:	\$72,931.00
OPERATIONS SUMMARY:	Standby. Waiting on snubbing unit to arrive.				

SUPERVISION CHARGES

[Add new line to ELM CHARGES](#)

SERVICE PROVIDED	Number of units	UNIT	RATE	RESOURCE NAME	Site Supervisor	AMOUNT
Project Supervisor	1.00	day	\$1,200.00		Shannon Cole	\$1,200.00
Mileage (Minimum Charge)	1.00	Day	\$150.00			\$150.00
Office trailer	1.00	Day	\$125.00			\$125.00
						\$0.00
						\$0.00
SUBTOTAL						\$1,475.00
Management Fee:						\$0.00
ELM TOTAL						\$1,475.00

THIRD PARTY CHARGES

[Add new line to THIRD PARTY CHARGES](#)

SERVICE PROVIDED	MAN HOURS	PO#	TICKET #	CONTRACTOR	SUBTOTAL	Est.	AMOUNT
Service rig	0.00		23020202ELM	Triumph Well Servicing	\$8,811.00		\$8,811.00
Boiler	0.00		109096	Miktye Trucking	\$1,320.00		\$1,320.00
Air Hand	0.00		1	Fire Master	\$955.00		\$955.00
Testers	0.00		19630	Stack Production Testing	\$3,050.00		\$3,050.00
Vacuum Truck (Standby)	0.00		108934	Miktye Trucking	\$2,000.00		\$2,000.00
							\$0.00
MAN HOURS TOTAL						0.00	
SUBTOTAL							\$16,136.00
Management Fee							\$0.00
THIRD PARTY TOTAL							\$16,136.00

To add a line in text box use "alt enter"

Time	Well Abandonments
	Standby day. Waiting on snubbing unit to complete drill out on M74 well.
	Went over tomorrows operations with the crew members.
	Traveled to location and checked on equipment.



DAILY REPORT

CLIENT:	Strategic Oil & Gas C/O Alvarez & Marsal		DATE :	February 3, 2023	
UWI:	300/F-75 60-10N 117-15W		Report #:	5	
PROJECT MANAGER:	Christopher Gagnon		AFE #:		
PROJECT NUMBER:	STRA050	AFE Amount:	\$171,488.10	% of AFE spent:	61%
Previous Costs to Date:	\$72,931.00	Current Days Costs:	\$32,330.50	Total Cost to Date:	\$105,261.50
OPERATIONS SUMMARY:	Made up twister bit, ran in the well and drilled out to 21 meters. Bit got stuck, worked bit and pulled from the well and inspected.				

SUPERVISION CHARGES

[Add new line to ELM CHARGES](#)

SERVICE PROVIDED	Number of units	UNIT	RATE	RESOURCE NAME	Site Supervisor	AMOUNT
Project Supervisor	1.00	day	\$1,200.00		Shannon Cole	\$1,200.00
Mileage (Minimum Charge)	1.00	Day	\$150.00			\$150.00
Office trailer	1.00	Day	\$125.00			\$125.00
						\$0.00
						\$0.00
SUBTOTAL						\$1,475.00
Management Fee:						\$0.00
ELM TOTAL						\$1,475.00

THIRD PARTY CHARGES

[Add new line to THIRD PARTY CHARGES](#)

SERVICE PROVIDED	MAN HOURS	PO#	TICKET #	CONTRACTOR	SUBTOTAL	Est.	AMOUNT
Service rig	60.00		23020203ELM	Triumph Well Servicing	\$10,868.00		\$10,868.00
Boiler	12.00		109097	Miktye Trucking	\$2,227.50		\$2,227.50
Air Hand	12.00		1	Fire Master	\$1,670.00		\$1,670.00
Testers	24.00		19631	Stack Production Testing	\$2,850.00		\$2,850.00
Snubbers	36.00		TS-03-2607-21	Team Snubbing	\$13,060.00		\$13,060.00
Communications	N/A		2	Red Rabbit	\$180.00		\$180.00
							\$0.00
MAN HOURS TOTAL					144.00	SUBTOTAL	\$30,855.50
						Management Fee	\$0.00
						THIRD PARTY TOTAL	\$30,855.50

To add a line in text box use "alt enter"

Time	Well Abandonments
06:00	Traveled to wellsite, completed LEL sweeps and walked location, looking for hazards. The wellsite is slopes and is very uneven, causing equipment to get stuck and has making rigging in the service rig slightly more challenging. -20 with a slight breeze.
06:30	Held pre-job safety meeting with all crew members on location, reviewed safe work permits to all services, reviewed, posted emergency response plan and fire and explosion. Built hazard assessments, some of the topics included frost bite and warm up breaks, use of spotters, good hand signals, communication, clear directions, use of 2-way radios, working with third parties, rig inspection, 3-point contact, slippery surfaces, house keeping and driving on ice roads.
07:00	Moved in 8.0 m3 of warm water for M-74 tank farm. Warmed up pump lines, manifold, mission pump and chics with boiler, tied lines together and broke circulation to the rig tank.
08:00	Spotted and rigged in Team Snubbing, hoisted and landed tubing joint complete with tubing hanger, pressure tested pipe rams to 1.4 MPa and 21 MPa, held pressure for 10-minutes each test, bled off pressure. Shut Snubbers annular bag and pressure tested to 1.4 low and 21 MPa high and held for 10-minutes each test. Unscrew out lag bolts, pulled hanger and laid out.
09:30	Made up BHA as follows: 4-7/8 Twister bit, XO, XO, check valve, check valve, tubing joint, ran in the well, picked up second tubing joint and made up kelly hose, tagged PB at 5.0 mKB, broke circulation at the rig tank, pumping at 250 liters per/min with no pressure, lowered tubing string down, placing 1-daN push weight, rotating at 50 RPM. Drilled through first 1.5 m in 30 minutes, continued making fast hole, making 3 m and lost weight, pushed down for 4 m with out rotation with 0.5 dAN resistance, stopped moving down, pushed 3 dAN on and stopped, hoisted tubing and broke circulation. Tagged the top of obstruction (possible plug) and started to drill, pumping at 280 liters per/min, rotating at 50 RPM with no pressure. Made 0.4 m and mill torqued up. Attempted to hoist the tubing but could not go up or down.
15:00	Started to pull 5 dAN over and attempted to rotate bit to the right, no success. Pulled 10 dAN over, worked the tubing up and down, holding right hand torque into the twister mill, continued increasing the pull weight to 15, and then 20 dAN, working string up and down, started pushing down 5 dAN, released torque in the bit and pulled to 25 then 30 dAN working up and down, increased pump rate to 300 liters at 7.0 MPa pressure. Pushing 8 dAN into the bit. Pulled up to 35 and then 40 dAN string weight with the snubbing unit, pushed 10 dAN down, increasing the downward force to 12 then 15 dAN, worked tubing string increasingly quicker up and down, string popped free put continued to drag 5 dAN over for 3 meters and . Circulated the well clean and pulled out of the well with 3-joints of tubing, and BHA.
17:45	Inspected the Twister bit and the BHA, bit and bit subs were plugged up solid with green cement. Reported findings to Calgary.
18:00	Winterized equipment and fueled up equipment.
18:30	SDFN



DAILY REPORT

CLIENT:	Strategic Oil & Gas C/O Alvarez & Marsal	DATE :	February 4, 2023
UWI:	300/F-75 60-10N 117-15W	Report #:	6
PROJECT MANAGER:	Christopher Gagnon	AFE #:	
PROJECT NUMBER:	STRA050	AFE Amount:	\$171,488.10
Previous Costs to Date:	\$105,261.50	% of AFE spent:	85%
		Total Cost to Date:	\$145,673.00

OPERATIONS SUMMARY: Ran in well with tricone bit and drilled out the bridge plug, rigged out snubbers and ran in the well with scraper. Reverse circulate and monitor the pressure on surface casing vent. Pulled 5 joints of tubing and secured the well.

SUPERVISION CHARGES

Add new line to ELM CHARGES

SERVICE PROVIDED	Number of units	UNIT	RATE	RESOURCE NAME	Site Supervisor	AMOUNT
Project Supervisor	1.00	day	\$1,200.00		Shannon Cole	\$1,200.00
Mileage (Minimum Charge)	1.00	Day	\$150.00			\$150.00
Office trailer	1.00	Day	\$125.00			\$125.00
						\$0.00
						\$0.00
SUBTOTAL						\$1,475.00
Management Fee:						\$0.00
ELM TOTAL						\$1,475.00

THIRD PARTY CHARGES

Add new line to THIRD PARTY CHARGES

SERVICE PROVIDED	MAN HOURS	PO#	TICKET #	CONTRACTOR	SUBTOTAL	Est.	AMOUNT
Service rig	62.50		23020402ELM	Triumph Well Servicing	\$14,186.00		\$14,186.00
Boiler	12.00		109098	Miktye Trucking	\$2,557.50		\$2,557.50
Air Hand	12.00		1	Fire Master	\$655.00		\$655.00
Testers	24.00		19632	Stack Production Testing	\$3,050.00		\$3,050.00
Snubbers	36.00		TS-03-2607-22	Team Snubbing	\$15,508.00		\$15,508.00
Communications	N/A		2	Red Rabbit	\$180.00		\$180.00
Vacuum Truck (Mikes Location)	14.00		108936	Miktye Trucking	\$2,800.00		\$2,800.00
MAN HOURS TOTAL					160.50		
						SUBTOTAL	\$38,936.50
						Management Fee	\$0.00
						THIRD PARTY TOTAL	\$38,936.50

To add a line in text box use "alt enter"

Time	Well Abandonments
06:00	Traveled to wellsite, completed LEL sweeps and walked location, looking for hazards. The wellsite is slopes and is very uneven, causing equipment to get stuck and has making rigging in the service rig slightly more challenging. -20 with a slight breeze.
06:30	Held pre-job safety meeting with all crew members on location, reviewed safe work permits to all services, reviewed, posted emergency response plan and fire and explosion. Built hazard assessments, some of the topics included working with multiple services, use of spotters, proper hand signals, communication, clear directions, use of 2-way radios, working with third parties, rig inspection, 3-point contact, slippery surfaces, house keeping and driving on ice roads.
07:00	Made up pump lines, warmed up pumping equipment, circulated lines to the rig tank. Repaired leaking Demco valve.
09:00	Made up BHA as follows: 4-7/8 Tricone bit, XO, XO, check valve, check valve, 3.1 m pup and tubing joint, ran in the well, picked up second tubing joint and made-up kelly hose, lowered tubing into the well slowly, rotating and circulating to the rig tank. Tagged at bridge plug at 20 mKB, good circulation at the rig tank, pumping at 250 liters per/min with no pressure, lowered tubing string down, placing 1-daN push weight, rotating at 50 RPM and once we started making hole, increased rotation speed to 65 RPM, pumping at 300 liters per/min with 1.0 MPa pressure. Recovered steel shavings, rubber and slips at the rig tank, drilled through the plug and circulated the well clean.
12:00	Ran in the well with 3 additional tubing joints to 60 meters, no obstructions. Pulled and laid out the tubing and BHA. Rigged out the snubbing unit and broke down bit, subs, and check valves. Rigged out and released Team snubbers.
14:15	Made up 139.7 mm 360 deg casing scraper, ran in the well on 73.0 mm tubing, tagged tight spots at each casing collar for the first 9-joints, continued in the well and observed water coming up the surface casing on joints # 25. Notified Calgary of findings. Shut in the vent and continued in the well. Tagged obstruction on joint 32, 33 and 35 but lost weight after picking up and running back down. Continued in the well with the scraper.
17:45	Tagged PB at 1415.30 mKB, hoisted up off bottom and landed tubing at 1408.4 mKB. Installed pressure gauge in the surface casing vent. Rigged in pump lines, reverse circulated 13.0 m3 (3-tubing volumes). Recovered some rust, metal and chips of cement in really black water. Pumped 1.5 m3 of annular volume. Monitor the surface casing vent when pressuring up on the casing, full communication with the casing. During pumping operations there was 2000 kPa on annulus and surface casing vent.
19:30	Drained BOP stack and pulled 5-joints of tubing. Secured well for night.
20:00	Winterized and fueled equipment.



DAILY REPORT

CLIENT:	Strategic Oil & Gas C/O Alvarez & Marsal	DATE :	February 5, 2023
UWI:	300/F-75 60-10N 117-15W	Report #:	7
PROJECT MANAGER:	Christopher Gagnon	AFE #:	
PROJECT NUMBER:	STRA050	AFE Amount:	\$171,488.10
Previous Costs to Date:	\$145,673.00	Current Days Costs:	\$44,705.85
		% of AFE spent:	111%
		Total Cost to Date:	\$190,378.85
OPERATIONS SUMMARY:	Ran in 5-joints and circulated the well to fresh water, pulled scraper from the well. Ran in the well with a RBL. Ran packer and started to isolate holes in the casing.		

SUPERVISION CHARGES

[Add new line to ELM CHARGES](#)

SERVICE PROVIDED	Number of units	UNIT	RATE	RESOURCE NAME	Site Supervisor	AMOUNT
Project Supervisor	1.00	day	\$1,200.00		Shannon Cole	\$1,200.00
Mileage (Minimum Charge)	1.00	Day	\$150.00			\$150.00
Office trailer	1.00	Day	\$125.00			\$125.00
						\$0.00
						\$0.00
SUBTOTAL						\$1,475.00
Management Fee:						\$0.00
ELM TOTAL						\$1,475.00

THIRD PARTY CHARGES

[Add new line to THIRD PARTY CHARGES](#)

SERVICE PROVIDED	MAN HOURS	PO#	TICKET #	CONTRACTOR	SUBTOTAL	Est.	AMOUNT
Service rig	62.50		23020502ELM	Triumph Well Servicing	\$11,382.00		\$11,382.00
Boiler	12.00		109099	Miktye Trucking	\$2,310.00		\$2,310.00
Air Hand	12.00		1	Fire Master	\$990.00		\$990.00
Testers	24.00		19633	Stack Production Testing	\$3,050.00		\$3,050.00
Wireline	15.00		23-0148-05	Titanium Wireline	\$7,500.00		\$7,500.00
Communications	N/A		2	Red Rabbit	\$180.00		\$180.00
Packer & scraper	N/A		INV0056016	Caridum Tools	\$3,760.00	✓	\$3,760.00
Snubbers	39.00		TS-03-2607-23	Team Snubbing	\$12,058.85		\$12,058.85
Vacuum Truck (Standby)	N/A		108937	Miktye Trucking	\$2,000.00		\$2,000.00
MAN HOURS TOTAL					164.50		
SUBTOTAL							\$43,230.85
Management Fee							\$0.00
THIRD PARTY TOTAL							\$43,230.85

To add a line in text box use "alt enter"

Time	Well Abandonments
06:00	Traveled to wellsite, completed LEL sweeps and walked location, looking for hazards. The wellsite is slopes and is very uneven, causing equipment to get stuck and has making rigging in the service rig slightly more challenging. -20 with a slight breeze.
06:30	Held pre-job safety meeting with all crew members on location, reviewed safe work permits to all services, reviewed, fire and explosion, posted emergency response plan. Built hazard assessments, some of the topics included working with multiple services, use of spotters, proper hand signals, communication, clear directions, use of 2-way radios, high pressure lines, rig inspection, 3-point contact, overhead loads, slippery surfaces, house keeping and driving on ice roads.
07:00	Made up pump lines, warmed up pumping equipment, circulated lines to the rig tank.
08:00	Ran in the well with 5-joints of tubing and pups, landed scraper at 1412.0 mKB. Moved in tank truck with 19.0 m3 of 25 C fresh water. Tied pump lines into the tubing and casing, reverse circulated 19.0 m3 down the casing and back to the rig tank. Returns were clean at the rig tank after pumping 17.0 m3. Emptied rig tank and hauled fluid to the A-3 tank in the battery. Water truck traveled to M-74 and loaded 10.0 m3 of 25 C fresh water and offloaded in the rig tank.
08:45	Pulled out of the well with 146-joints of tubing and stood in the derrick. Laid out scraper and inspected. Scraper appears to be in good condition.
10:15	Moved in Titanium Wireline, held pre-job safety meeting, reviewed emergency response plan, safe work permit and completed hazard assessment. Spotted and rigged in wireline unit, made up RBL-CCL-GR and run in the well, located fluid at 90 meters and completed high speed pass from 90 meters to 1415.6 mKB. Topped up well with 1.0 m3 of fresh water. Pulled main pass from 1416.6 mKB to surface. Forward results to Calgary contact for analysis. Rigged out wireline and released them to camp. Wireline had issues with tool and changed out.
14:30	Ran in the well with 11-joints of 73 .0 mm tubing, packer, 1.85 m pup and 10-joint of tubing, set packer at center element at 99.13 mKB, pulled 6-daN over tension. Pumped down the tubing and had communication up the surface casing vent and casing, pulled 10-daN over Pressure tested down the annulus and communication up the surface casing vent. Stopped pump, unset packer.
15:45	Ran in well with addition 10-joints of tubing, set packer at 194.82 mKB, pulled 10-daN overstring weight. Tied into the tubing and pressure tested casing from 194.82 mKB to 1416.6 mKB to 7.0 MPa and held for 15-minutes. No communication with SCV Bled pressure off to zero and unset the packer.
16:30	Pulled 4-joints of tubing from the well, set packer at 156.78 mKB, pulled 10-daN overstring weight. Tied into the tubing and pressure tested casing from 156.78 mKB to 1416.6 mKB to 7.0 MPa and held for 15-minutes. No communication with SCV. Bled pressure off to zero and unset the packer.
17:15	Pulled 2-joints of tubing from the well, set packer at 137.53 mKB, pulled 10-daN overstring weight. Tied into the tubing and pressure tested casing from 137.53 mKB to 1416.6 mKB to 7.0 MPa and held for 15-minutes. No communication with SCV. Bled pressure off to zero and unset the packer.
18:15	Pulled 2-joints of tubing from the well, set packer at 119.04 mKB, pulled 10-daN overstring weight. Tied into the tubing with pump line and brought pressure up to 7.0 MPa and pressure bled off very slowly to zero, monitored surface casing valve, bumped pressure up to 7.0 MPa and bled off a second time, started to see pressure on the surface casing vent and water started to come out of casing valve. Suspect that casing is rotten and that there is multiple holes. Will continue to locate bad casing in the morning.
19:00	Secured the well. Winterised and fueled equipment.



DAILY REPORT

CLIENT:	Strategic Oil & Gas C/O Alvarez & Marsal	DATE :	February 6, 2023
UWI:	300/F-75 60-10N 117-15W	Report #:	8
PROJECT MANAGER:	Christopher Gagnon	AFE #:	
PROJECT NUMBER:	STRA050	AFE Amount:	\$171,488.10
Previous Costs to Date:	\$190,378.85	Current Days Costs:	\$20,583.00
		% of AFE spent:	123%
		Total Cost to Date:	\$210,961.85

OPERATIONS SUMMARY: Continued to locate bad casing, make up and run in the well with BP, set and pressure test. Circulated down and balance 500 liter cement plug on the permanent bridge plug. Pulled 46-joints from the well. SDFN

SUPERVISION CHARGES

Add new line to ELM CHARGES

SERVICE PROVIDED	Number of units	UNIT	RATE	RESOURCE NAME	Site Supervisor	AMOUNT
Project Supervisor	1.00	day	\$1,200.00		Shannon Cole	\$1,200.00
Mileage (Minimum Charge)	1.00	Day	\$150.00			\$150.00
Office trailer		Day	\$125.00			\$0.00
						\$0.00
						\$0.00
SUBTOTAL						\$1,350.00
Management Fee:						\$0.00
ELM TOTAL						\$1,350.00

THIRD PARTY CHARGES

Add new line to THIRD PARTY CHARGES

SERVICE PROVIDED	MAN HOURS	PO#	TICKET #	CONTRACTOR	SUBTOTAL	Est.	AMOUNT
Service rig	62.50		23020602ELM	Triumph Well Servicing	\$10,868.00		\$10,868.00
Boiler	12.00		109100	Miktye Trucking	\$2,145.00		\$2,145.00
Air Hand	12.00		1	Fire Master	\$990.00		\$990.00
Testers	24.00		19634	Stack Production Testing	\$3,050.00		\$3,050.00
Communications	N/A		2	Red Rabbit	\$180.00		\$180.00
Vacuum Truck (Standby)	N/A		108937	Miktye Trucking	\$2,000.00		\$2,000.00
							\$0.00
MAN HOURS TOTAL					110.50	SUBTOTAL	\$19,233.00
						Management Fee	\$0.00
						THIRD PARTY TOTAL	\$19,233.00

To add a line in text box use "alt enter"

Time	Well Abandonments
06:00	Traveled to wellsite, completed LEL sweeps and walked location, looking for hazards. The wellsite is slopes and is very uneven, causing equipment to get stuck and has making rigging in the service rig slightly more challenging. -20
06:30	Held pre-job safety meeting with all crew members on location, reviewed safe work permits to all services, reviewed, fire and explosion, posted emergency response plan. Built hazard assessments, some of the topics included working with multiple services, use of spotters, proper hand signals, communication, clear directions, use of 2-way radios, high pressure lines, rig inspection, 3-point contact, overhead loads, slippery surfaces, house keeping and driving on ice roads. Made up pump lines, warmed up pumping equipment, circulated lines to the rig tank.
07:00	Ran in well with addition 1-joints of tubing, set packer at 119.04 mKB, pulled 10-daN overstring weight. Test failed, ran in the well with 1-joint of tubing and set packer at 128.60 mKB and pressure test also failed.
07:30	Pulled tubing up and set the packer at to 61.82 mKB and obtained a pressure test of 7.0 MPa and held for 15-minutes, ran down with 2 joints and attempted a pressure test at 80.75 mKB but also failed. Set packer at 71.32 mKB, pulled 10-dAN overstring to pack-off the packer but had a failed test. Hoisted tubing to 66.82 mKB, set packer and had another failed test. Casing is good from 137.53 mKB to PB and is good from 61.82 mKB to surface. We have 75.71 meters of bad casing from 61.82 mKB to 137.53mKB.
11:30	Pulled tubing and packer from the well. Completed BOP drill and held post BOP drill meeting and discussed lessons learned. We will continue practicing drills throughout the project. Received notification from Calgary contact that we can run bridge plug.
12:15	Made up 139.7 mm permanent bridge plug on 2.45 m pup, run in the well on 146-joints, 3.1 m pup, and 1-joint of 73.0 mm tubing. Park bridge plug at 1415.0 mKB, tied pump line into the tubing and filled with 4.2 m3 of clean fresh water. Pressured up tubing to 10.0 MPa and activated, hoisted 6-8-10 dAN overstring weight to break slips and packed off elements. Lowered down and held 0.5 dAN overstring weight and rotated 10-turns to the right and released from the plug.
14:30	Mixed up 500 liters of 1900 kg/m "OILWELL" cement in the mixing barrels, tied pump line into the annulus and started to suck back, hoisted the barrels to the rig floor and transferred cement to the tubing, once the cement had all been transferred, installed pump line into the tubing. Pumped 3.8 m3 of fresh water down the tubing and balanced cement plug. Opened both annulus and tubing and allowed to equalize. Broke off the pump lines.
16:30	Pulled first 5-tubing joints slow, pulled out of well with 46-joints and shutdown for the night. Secured well.
17:30	Winterized and fueled equipment. SDFN.



DAILY REPORT

CLIENT:	Strategic Oil & Gas C/O Alvarez & Marsal	DATE :	February 7, 2023
UWI:	300/F-75 60-10N 117-15W	Report #:	9
PROJECT MANAGER:	Christopher Gagnon	AFE #:	
PROJECT NUMBER:	STRA050	AFE Amount:	\$171,488.10
Previous Costs to Date:	\$210,961.85	% of AFE spent:	133%
		Current Days Costs:	\$17,103.50
		Total Cost to Date:	\$228,065.35

OPERATIONS SUMMARY: Pulled tubing and the plug setting gear from the well, ran in to 180.0 mKB and landed the tubing hanger. Broke circulation for clean up and circulated dye to calculate circulation time and cement volumes. Cementers broke down and did not show up.

SUPERVISION CHARGES

[Add new line to ELM CHARGES](#)

SERVICE PROVIDED	Number of units	UNIT	RATE	RESOURCE NAME	Site Supervisor	AMOUNT
Project Supervisor	1.00	day	\$1,200.00		Shannon Cole	\$1,200.00
Mileage (Minimum Charge)	1.00	Day	\$150.00			\$150.00
Office trailer	1.00	Day	\$125.00			\$125.00
						\$0.00
						\$0.00
SUBTOTAL						\$1,475.00
Management Fee:						\$0.00
ELM TOTAL						\$1,475.00

THIRD PARTY CHARGES

[Add new line to THIRD PARTY CHARGES](#)

SERVICE PROVIDED	MAN HOURS	PO#	TICKET #	CONTRACTOR	SUBTOTAL	Est.	AMOUNT
Service rig	50.00		23020702ELM	Triumph Well Servicing	\$8,811.00		\$8,811.00
Boiler	12.00		106223	Miktye Trucking	\$1,897.50		\$1,897.50
Air Hand	12.00		1	Fire Master	\$990.00		\$990.00
Testers	24.00		20343	Stack Production Testing	\$1,750.00		\$1,750.00
Communications	N/A		2	Red Rabbit	\$180.00		\$180.00
Vacuum Truck (Standby)	N/A		108937	Miktye Trucking	\$2,000.00		\$2,000.00
MAN HOURS TOTAL		98.00					
SUBTOTAL							\$15,628.50
Management Fee							\$0.00
THIRD PARTY TOTAL							\$15,628.50

To add a line in text box use "alt enter"

Time	Well Abandonments
07:00	Traveled to wellsite, completed LEL sweeps and walked location, looking for hazards. -14 with a breeze
07:30	Held pre-job safety meeting with all crew members on location, reviewed safe work permits to all services, reviewed, fire and explosion, posted emergency response plan. Built hazard assessments, some of the topics included, use of spotters, proper hand signals, communication, clear directions, use of 2-way radios, high pressure lines, 3-point contact, overhead loads, slippery surfaces, house keeping and driving on ice roads.
08:00	Pulled out of the well with 82-joints of tubing and laid out on the ground, stood the 18-joints and broke out the plug setting gear. Located tubing hanger, clean up and installed new O-rings.
09:45	Ran in the well with coupler, 16-joints of tubing, 3.1 m pup and 2-joints and the tubing hanger tubing bottom is landed at 180.0 mKB. Pressure tested pipes and the tubing hanger to 1.4 MPa low and 21.0 MPa and held for 10-minutes.
10:30	Rigged up pump lines, filled tubing displacement and reverse circulated to the rig tank for clean up. Returns are super clean at the rig tank. Added dye to the water and circulated the well around and it took 1.80 m3 to return back to the rig tank. Stopped pump and drained the lines.
15:30	Pulled 5-joints of tubing to drop fluid in the wellbore.
16:00	Winterized and fueled equipment
17:00	SDFN



DAILY REPORT

CLIENT:	Strategic Oil & Gas C/O Alvarez & Marsal		DATE :	February 8, 2023	
UWI:	300/F-75 60-10N 117-15W		Report #:	10	
PROJECT MANAGER:	Christopher Gagnon		AFE #:		
PROJECT NUMBER:	STRA050	AFE Amount:	\$171,488.10	% of AFE spent:	156%
Previous Costs to Date:	\$228,065.35	Current Days Costs:	\$39,098.77	Total Cost to Date:	\$267,164.12

OPERATIONS SUMMARY: Ran in the well with 5-joints of tubing, balanced 2.3 m3 cement plug from 180 m to surface. Pulled tubing from the well, washed up BOP's and landed the tubing hanger. Pumped an additional 2.3 m3 down the casing and up the casing vent.

SUPERVISION CHARGES

[Add new line to ELM CHARGES](#)

SERVICE PROVIDED	Number of units	UNIT	RATE	RESOURCE NAME	Site Supervisor	AMOUNT
Project Supervisor	1.00	day	\$1,200.00		Shannon Cole	\$1,200.00
Mileage (Minimum Charge)	1.00	Day	\$150.00			\$150.00
Office trailer	1.00	Day	\$125.00			\$125.00
						\$0.00
						\$0.00
SUBTOTAL						\$1,475.00
Management Fee:						\$0.00
ELM TOTAL						\$1,475.00

THIRD PARTY CHARGES

[Add new line to THIRD PARTY CHARGES](#)

SERVICE PROVIDED	MAN HOURS	PO#	TICKET #	CONTRACTOR	SUBTOTAL	Est.	AMOUNT
Service rig	50.00		23020802ELM	Triumph Well Servicing	\$12,240.00		\$12,240.00
Boiler	8.00		106224	Miktye Trucking	\$1,320.00		\$1,320.00
Air Hand	6.00		1	Fire Master	\$990.00		\$990.00
Testers	12.00		20344	Stack Production Testing	\$3,050.00		\$3,050.00
Communications	N/A		2	Red Rabbit	\$180.00		\$180.00
Vacuum Truck (Standby)	12.00		108937	Miktye Trucking	\$1,320.00		\$1,320.00
Cementers	24.00		7120	Charger Pumping	\$18,523.77		\$18,523.77
MAN HOURS TOTAL					112.00	SUBTOTAL	\$37,623.77
						Management Fee	\$0.00
						THIRD PARTY TOTAL	\$37,623.77

To add a line in text box use "alt enter"

Time	Well Abandonments
07:30	Traveled to wellsite, completed LEL sweeps and walked location, looking for hazards. -14 with a breeze
08:00	Held pre-job safety meeting with all crew members on location, reviewed safe work permits to all services, reviewed, fire and explosion, posted emergency response plan. Built hazard assessments, some of the topics included, use of spotters, proper hand signals, communication, clear directions, use of 2-way radios, high pressure lines, 3-point contact, overhead loads, slippery surfaces, house keeping and driving on ice roads.
08:30	Ran in the well with 5-joints of tubing, spaced out and landed the tubing hanger. Tubing outlet landed at 180.0 mKB
10:00	Moved on water hauler, vacuum truck and cementers. Held tailgate meeting and spotted equipment. Held pre-job safety meeting, issued safe work permits, reviewed emergency response plan, built hazard assessments and discussed cementing operations.
11:00	Rigged in the cement truck and bulker, pressure tested surface lines to 16.0 MPa mixed up 2.3 m3 of Charger SQ 175 +1% CHGC-2 and pumped down the tubing and returned up the casing. (surface casing vent closed). Allowed cement to balance and shut in the tubing valve. Pumped hose full of cement into the vacuum truck and chased by 200 liters of water.
12:30	Opened tubing and casing valves, pulled out of the well with 18-joints and pups. Re-installed the tubing hanger, pup and working valve. Tied cementers into casing, mixed up 2.3 m3 of Charger SQ 175 +1% CHGC-2 cement bled and pumped down the casing and up the surface casing valve. Recovered 1.6 m3 of water, followed by 0.7 m3 of cement slurry. Switched to pumping 350 liters of water to clean out lines and lower cement top down 25.0 m inside of wellbore. Shut in the surface casing vent and attempted to bump up pressure for squeeze with 100 liters of water. Pressured up to 200 kPa started to feed. Stopped pump.
13:00	Rigged out Charger cement unit, bulker, tank and vacuum truck. Release to bases.
14:15	Tied rig pump into casing and bumped pressure to 1000 kPa and shut the well in. Secured well for night. Tidied wellsite, winterized and fueled equipment.
17:00	SDFN



DAILY REPORT

CLIENT:	Strategic Oil & Gas C/O Alvarez & Marsal		DATE :	February 9, 2023	
UWI:	300/F-75 60-10N 117-15W		Report #:	11	
PROJECT MANAGER:	Christopher Gagnon		AFE #:		
PROJECT NUMBER:	STRA050	AFE Amount:	\$171,488.10	% of AFE spent:	159%
Previous Costs to Date:	\$267,164.12	Current Days Costs:	\$5,811.00	Total Cost to Date:	\$272,975.12
OPERATIONS SUMMARY:	Tag cement, pressure test and rig out service rig and related equipment. Prepare to move to A-73 well.				

SUPERVISION CHARGES

[Add new line to ELM CHARGES](#)

SERVICE PROVIDED	Number of units	UNIT	RATE	RESOURCE NAME	Site Supervisor	AMOUNT
Project Supervisor	0.00	day	\$1,200.00		Shannon Cole	\$0.00
Mileage (Minimum Charge)	0.00	Day	\$150.00			\$0.00
Office trailer	0.00	Day	\$125.00			\$0.00
						\$0.00
						\$0.00
SUBTOTAL						\$0.00
Management Fee:						\$0.00
ELM TOTAL						\$0.00

THIRD PARTY CHARGES

[Add new line to THIRD PARTY CHARGES](#)

SERVICE PROVIDED	MAN HOURS	PO#	TICKET #	CONTRACTOR	SUBTOTAL	Est.	AMOUNT
Service rig	50.00		23020902ELM	Triumph Well Servicing	\$5,811.00		\$5,811.00
							\$0.00
							\$0.00
							\$0.00
							\$0.00
							\$0.00
MAN HOURS TOTAL					50.00	SUBTOTAL	\$5,811.00
						Management Fee	\$0.00
						THIRD PARTY TOTAL	\$5,811.00

To add a line in text box use "alt enter"

Time	Well Abandonments
06:00	Traveled to wellsite, completed LEL sweeps and walked location, looking for hazards. -14 with a breeze
06:30	Held pre-job safety meeting with all crew members on location, reviewed safe work permits to all services, reviewed, fire and explosion, posted emergency response plan. Built hazard assessments, some of the topics included, use of spotters, proper hand signals, communication, clear directions, use of 2-way radios, high pressure lines, 3-point contact, overhead loads, slippery surfaces, house keeping and driving on ice roads.
07:00	Ran in the well with 2-joints of tubing and tagged cement top at 22.15 mKB. Pulled tubing from the well. Rigged in pump line and filled lines, pressure tested casing to 7.0 MPa and held for 15-minutes. Bled well off to rig tank.
09:30	Rigged out work floor, stripped off class III BOP stack. Sucked down the wellbore 3 meters to keep from freezing. Installed top section and tightened down. Shut valves and bull plugged.
11:00	Rigged out service rig, pump truck, crew change unit, air trailer, boiler, light tower, and flameless heater. Walked location and ensured crew picked up all debris and there is also no sign stainage.
14:00	Start rig move to A-73.
	WELL IS READY TO CUT AND CAP



DAILY REPORT

CLIENT:	Strategic Oil & Gas C/O Alvarez & Marsal		DATE :	March 13, 2023	
UWI:	300/F-75 60-10N 117-15W		Report #:	12	
PROJECT MANAGER:	Christopher Gagnon		AFE #:		
PROJECT NUMBER:	STRA050	AFE Amount:	\$171,488.10	% of AFE spent:	166%
Previous Costs to Date:	\$272,975.12	Current Days Costs:	\$12,116.50	Total Cost to Date:	\$285,091.62
OPERATIONS SUMMARY:	Checked well for pressure 0kpa, thawed well, cut off well at 2m below ground, installed sign, capped well, backed filled. Well complete.				

SUPERVISION CHARGES

[Add new line to ELM CHARGES](#)

SERVICE PROVIDED	Number of units	UNIT	RATE	RESOURCE NAME	Site Supervisor	AMOUNT
Project Supervisor	0.67	day	\$1,200.00		Don Sadoway	\$804.00
Mileage	250.00	km	\$1.25			\$312.50
						\$0.00
						\$0.00
						\$0.00
SUBTOTAL						\$1,116.50
Management Fee:						\$0.00
ELM TOTAL						\$1,116.50

THIRD PARTY CHARGES

[Add new line to THIRD PARTY CHARGES](#)

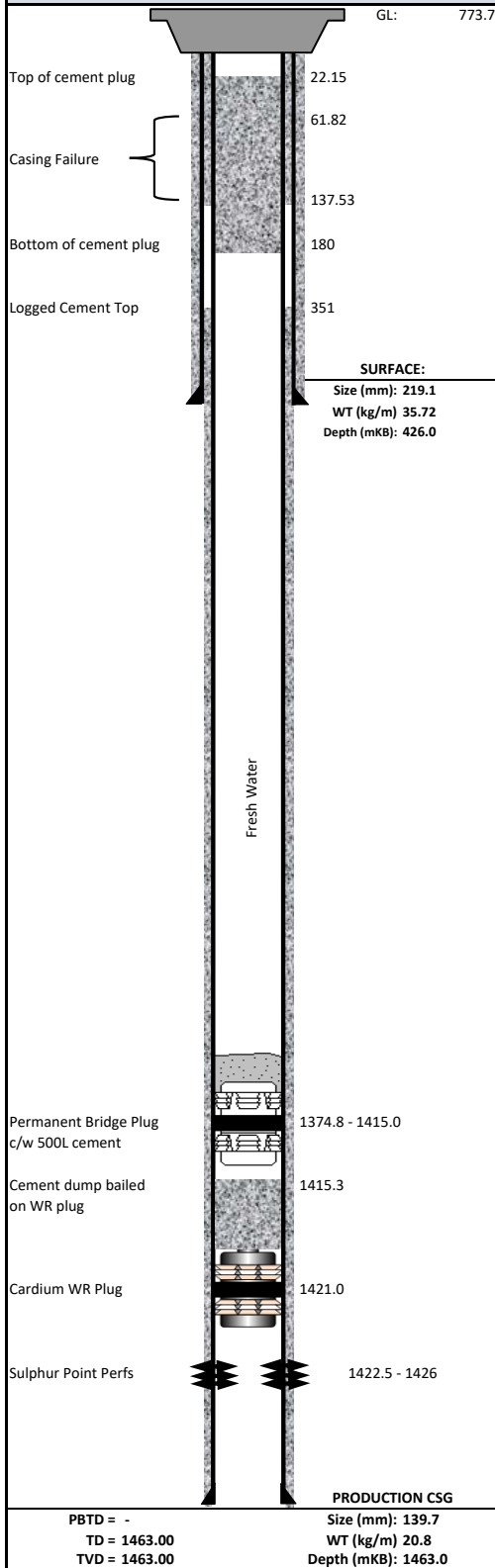
SERVICE PROVIDED	MAN HOURS	PO#	TICKET #	CONTRACTOR	SUBTOTAL	Est.	AMOUNT
Jet cutter		includes mobilize		Innovative	\$8,000.00	✓	\$8,000.00
Hydro-vac		includes mobilize		Innovative	\$3,000.00	✓	\$3,000.00
							\$0.00
							\$0.00
							\$0.00
							\$0.00
MAN HOURS TOTAL					0.00		
SUBTOTAL							\$11,000.00
Management Fee							\$0.00
THIRD PARTY TOTAL							\$11,000.00

To add a line in text box use "alt enter"

Time	Well Abandonments
14:00	Swept location of LEL and H2S. Moved in services to conduct cut and cap of the well. Held safety meeting and pre job discussion. Reviewed JSA and SOP for cut and cap of well. Issued safe work permit to cutting crew and hydro-vac. Medic reviewed ERP with crew and posted ERP. Rigged in services. Checked wellhead pressure. Casing - 0kpa. Installed bubble test equipment with 3/8 hose in 1" of water. No bubbles observed in 10 minutes. Innovative water jet cut through production and surface casing 2m meters down from surface grade . Had hydro-vac clean soil on one side of the well. Had to make 2 rotations with cutter to cut through 2 casings and 1 conductor pipe. Removed cut off wellhead. Installed casing cap assembly for production and surface casing with LSD & well licence number and was buried with top soil. Backfilled hole from wellhead removal. Had hydro-vac place a hole 1m north of well center to a depth of 1m. Installed wellsite post and sign facing north, and cemented into place. Note: No visible staining on location. No contamination observed around the wellhead. Note: 16" Conductor pipe was removed with wellhead. Pics were taken before and after and were sent with report.
17:00	Moved off location



FINAL WELL DIAGRAM



GENERAL DETAILS					REV #		1.0		
WELL NAME:		Strategic et al Cameron F-75			FIELD:		Cameron Hills		
UWI:		300/F-75 60-10N 117-15W			LICENSE:		1971		
SURFACE:					LATITUDE:		60.07472		
COMPANY:		Strategic Oil And Gas Ltd			DRAWN BY:		C. Gagnon		
DEVIATION:		WELL STATUS:							
Vertical		Abandoned							
ELEVATIONS & DEPTHS									
KB (mKB)		GL (m)		KB-SCF (m)		KB-GR (m)		BGWP (mKB)	
778.8		773.7				5.10		600.00	
CASING STRINGS									
STRING		SIZE (mm)		WEIGHT (kg/m)		GRADE		CPLG	
Surface:		219.1		35.72		J-55			
Intermediate:									
Production:		139.7		20.8		J-55			
Liner:									
Open Hole:									
CEMENTING									
STRING		DETAIL				Returns (m ³)		Log Cmt Top (mKB)	
Surface:		34 T 0-1-0 Class G + 2% CaCl ₂				7 m ³			
Intermediate:		23 T Fill-Lite + 0.6% R-3 + 3.0% A-9 5.0 T 0-1-0 Class G + 0.4% FL-5				No Returns		351 Feb 4, 2023	
COMPLETION DATA									
ITEM				DEPTH (mKB)			STATUS		
Cement Plug - Balanced cement across casing failure then squeezed cement through failure and out vent				22.15 - 180					
Casing Failure				61.82 - 137.53			Abandoned		
Permanent Bridge Plug c/w 500 L cement				1374.8 - 1415.0					
Cement Dump bailed on WR plug				1415.3			(tagged)		
Cardium Retrievable Bridge Plug				1421					
Sulphur Point Perforations				1422.5 - 1426.0			Abandoned		
Cut and capped March 13, 2023				2.0 mGL					

CAMERON F-75



F-75 Wellhead



Vented cap



Wellhead pulled out of ground



Sign placed on north side of the wellhead and facing north