



SET PLUG  
RECORD

Company STRATEGIC OIL AND GAS LTD.  
Well STRATEGIC ET AL CAMERON H-58  
Field 300H586010N11730W  
Province Northwest Territories

Company STRATEGIC OIL AND GAS LTD.  
Well STRATEGIC ET AL CAMERON H-58  
Field 300H586010N11730W  
Province Northwest Territories

Unique Well Identifier: 300H586010N11730W  
Canadian Well Identifier: N/A  
Surface Location: H-58  
LSD. 60 SEC. 10 TWP. 117 RGE. 30 W.  
Well Licence # 1975

Permanent Datum Ground Level Elevation (m) 728.4  
Log Measured From 4.70 m Above Permanent Datum  
Drilling Measured From Kelly Bushing  
Elevations (m)  
K.B. 733.1  
C.F.  
G.L. 728.4

Date	FEB 12 23			Perforated Intervals			
Run Number	One			Gun Type			
Depth - Driller (m)	1562.0			SPM	Gram (g)		
Depth - Logger (m)	1507.0			Phasing	Size (mm)		
Bottom Logged Interval (m)	1504.0			From (m)	To (m)		
Top Logged Interval (m)	1400.0			From (m)	To (m)		
Fluid Type	WATER			From (m)	To (m)		
Level (m)	N/A			From (m)	To (m)		
Wellhead Pressure	0 MPA			From (m)	To (m)		
Max. Recorded Temp.	N/A			From (m)	To (m)		
Estimated Cement Top (m)	N/A			From (m)	To (m)		
Equipment Number	CCL 01			From (m)	To (m)		
Unit No. / Location	3002			Casing Record			
Recorded By	CLAYTON RICHARD			Size (mm)	Weight (kg/m)	From (m)	To (m)
Witnessed By	MIKE YOUNG			219.10	35.72	Surface	426.0
				139.70	23.07	Surface	1562.0
Services							
	Type	Style	Depth (m)	Tubing Record			
Bridge Plug		PERM	1498.0				
Packer							
Retainer							
				Other Services			
Junk Basket							
Gauge Ring							

All interpretations are opinions based on inferences from electrical or other measurements and we cannot and do not guarantee the accuracy or correctness of any interpretation, and we shall not, except in the case of gross or willful negligence on our part, be liable or responsible for any loss, costs, damages, or expenses incurred or sustained by anyone resulting from any interpretation made by any of our officers, agents or employees. These interpretations are also subject to our general terms and conditions set out in our current Price Schedule.

Correlated to: NO LOGS TO CORRELATE TO AT TIME OF SETTING

Date: COLLAR ON PROGRAM @ 1493.5 m AND EXISTING PERFS

Log Type:

Service Order# 23-0149-04

Remarks: SURFACE- 60.12512-117-30W

Thank you for using Titanium Energy Services



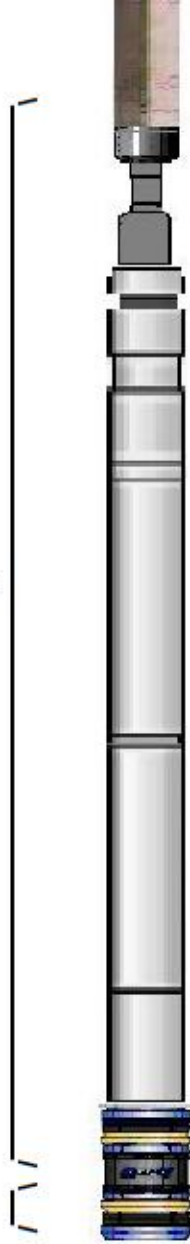
CCL TO CENTER ELEMENT= 3.0 m

SETTING DEPTH= 1498.0 m

DEAD TOOL= 0.30 m

PLUG TYPE:  
PERMENENT 10 K

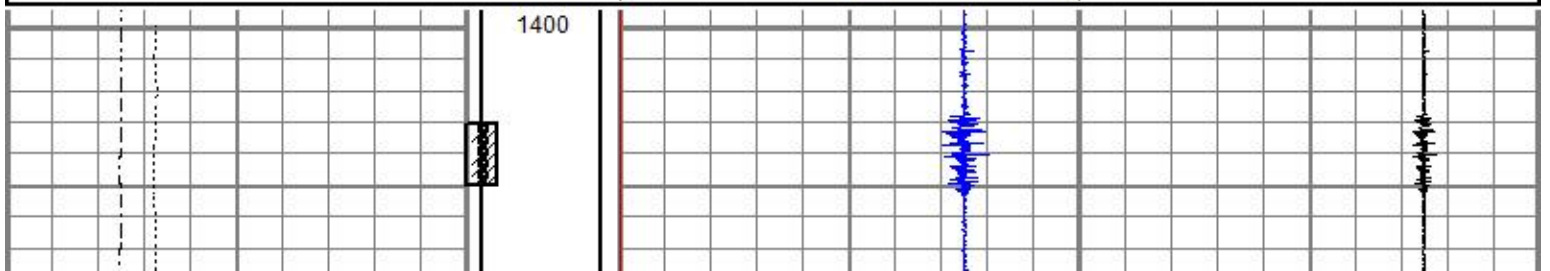
REMARKS:

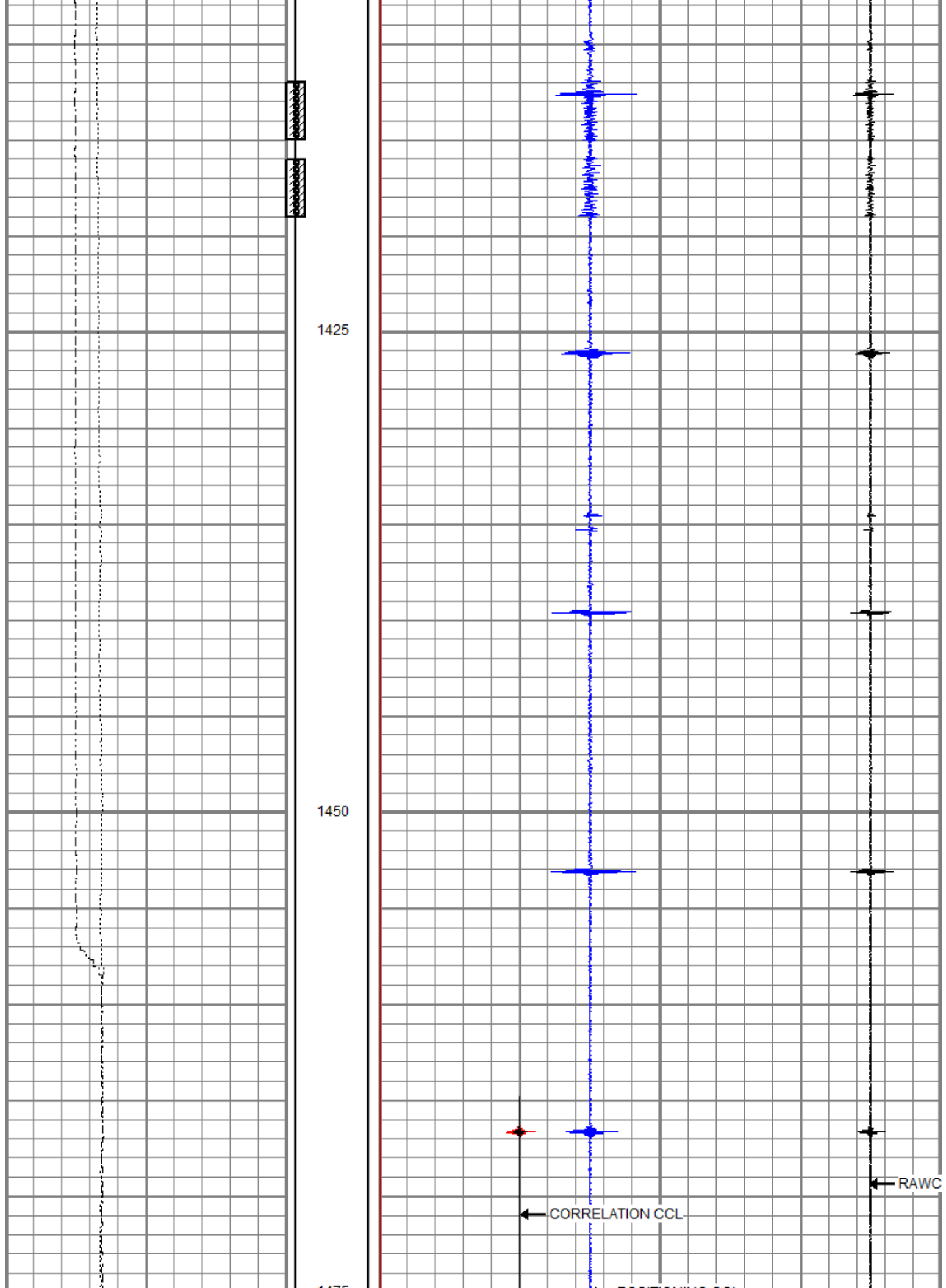


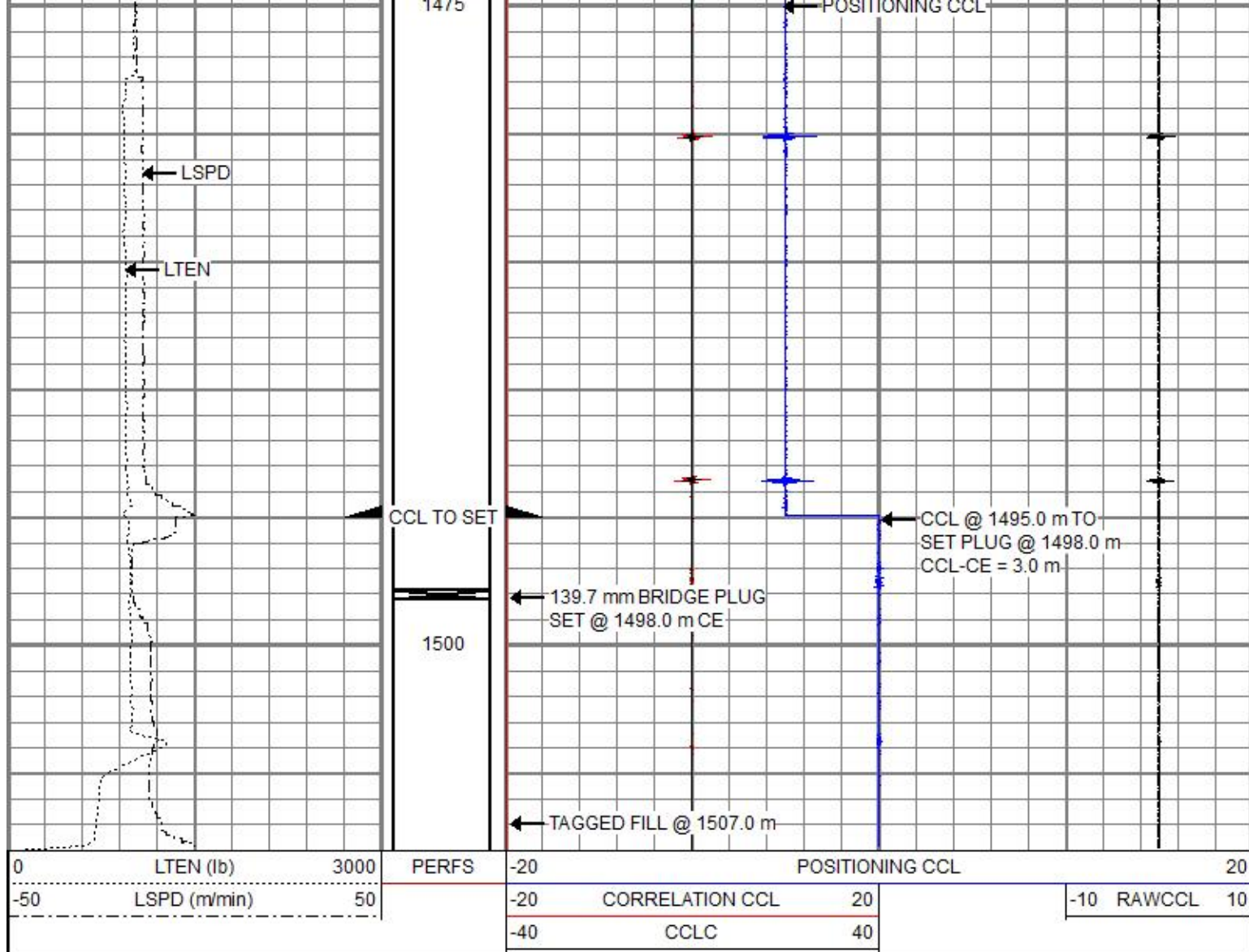
## SET 139.7 mm BRIDGE PLUG @ 1498.0 m CE

Database File elm\_nwt\wl-1975-300h586010n11730w-bplug-feb 12 23\wl-1975-300h586010n11730w-bplug-feb 12 23.db  
Dataset Pathname pass5  
Presentation Format ccl\_vertical  
Dataset Creation Sun Feb 12 07:44:14 2023  
Charted by Depth in Meters scaled 1:240

0	LTEN (lb)	3000	PERFS	-20	POSITIONING CCL	20
-50	LSPD (m/min)	50		-20	CORRELATION CCL	20
				-40	CCLC	40







**SET 139.7 mm BRIDGE PLUG @ 1498.0 m CE**



**Company** STRATEGIC OIL AND GAS LTD.

**Well** STRATEGIC ET AL  
CAMERON

**Field** H-58 300H586010N11730W  
Cameron

**Province** Northwest Territories