



Perforation  
Record

Company		Strategic Oil & Gas Ltd.	
Well		STRATEGIC EL AL SWEDE	
Field		Swede	
Province.		Northwest Territories	
Company Strategic Oil & Gas Ltd.		Well	
STRATEGIC EL AL SWEDE		J-37 60-10N 117-30W	
Field		Swede	
Province Northwest Territories		Unique Well Identifier: 300J376010117300	
Canadian Well Identifier: J-37		Well Licence # 1751	
Surface Location: J-37		LSD. 60 SEC. 10 TWP. 117 RGE. 30 W.	
Permanent Datum	Ground Level	Elevation (m)	725.70
Log Measured From	3.70m	Above Permanent Datum	K.B. 729.40
Drilling Measured From	Kelly Bushing		C.F.
			G.L. 725.70
Date	January 20, 2023	Perforated Intervals	
Run Number	One	Gun Type	ERHSC
Depth - Driller (m)	1575.00	SPM	17
Depth - Logger (m)	Not Tagged	Phasing	60°
Bottom Logged Interval (m)	507.30	From (m)	470.00
Top Logged Interval (m)	436.00	From (m)	To (m)
Fluid Type	Water	From (m)	To (m)
Level (m)	Full	From (m)	To (m)
Wellhead Pressure	0.00	From (m)	To (m)
Max. Recorded Temp.	N/A	From (m)	To (m)
Estimated Cement Top (m)	N/A	From (m)	To (m)
Equipment Number	02	Casing Record	
Unit No. / Location	3002	Size (mm)	Weight (kg/m)
Recorded By	B. Williams	244.50	53.57
Witnessed By	M. Young	177.80	29.76
		114.30	14.14
Services		Tubing Record	
Bridge Plug	Type	Style	Depth (m)
Packer			
Retainer			
Junk Basket			
Gauge Ring			
		Other Services	

All interpretations are opinions based on inferences from electrical or other measurements and we cannot and do not guarantee the accuracy or correctness of any interpretation, and we shall not, except in the case of gross or willful negligence on our part, be liable or responsible for any loss, costs, damages, or expenses incurred or sustained by anyone resulting from any interpretation made by any of our officers, agents or employees. These interpretations are also subject to our general terms and conditions set out in our current Price Schedule.

Correlated to: Titanium Energy Services.

Date: Jan 18, 2023

Log Type: RCBL Main @ 0mPa

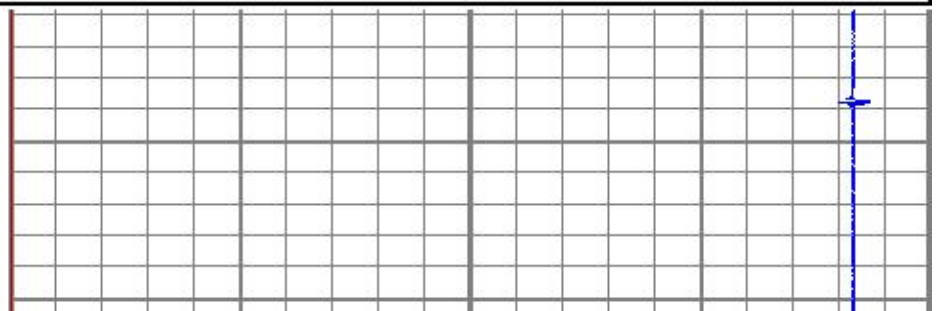
Service Order# 23-0024-20

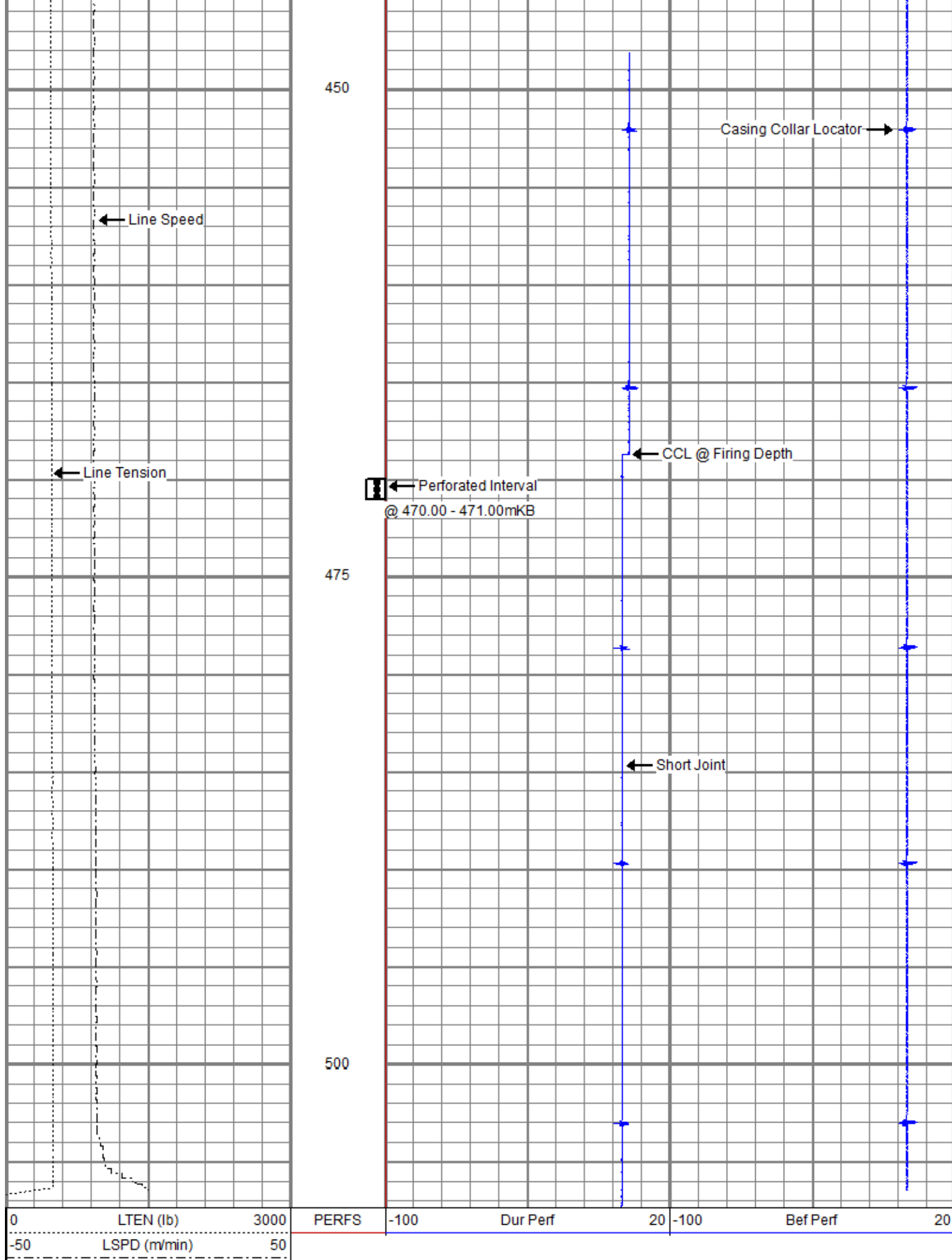
Remarks: - Penshift On CCL Curve Indicates Firing Depth.  
-Center Of CCL To Top Shot= 1.20m.

Thank you for using Titanium Energy Services



REMARKS:





## Perforation Record



**Company** Strategic Oil & Gas Ltd.

**Well** STRATEGIC EL AL SWEDE  
J-37 60-10N 117-30W

**Field** Swede

**Province** Northwest Territories