



PERFORATION
RECORD

Company STRATEGIC OIL AND GAS LTD.
Well STRATEGIC ET AL CAMERON L-47
Field Cameron
Province Northwest Territories

Company STRATEGIC OIL AND GAS LTD.
Well STRATEGIC ET AL CAMERON L-47
Field Cameron
Province Northwest Territories

Unique Well Identifier: 300L476010N11730W
Canadian Well Identifier: N/A
Surface Location: L-47
LSD. 60 SEC. 10 TWP. 117 RGE. 30 W. Well Licence # 1736

Permanent Datum Ground Level Elevation (m) 718.9
Log Measured From 4.10 m Above Permanent Datum
Drilling Measured From Kelly Bushing
Elevations (m)
K.B. 723.0
C.F.
G.L. 718.9

Date	FEB 25 23	Perforated Intervals			
Run Number	One	Gun Type	ERHSC	SPM	17
Depth - Driller (m)	1562.5			Gram (g)	25
Depth - Logger (m)	415.0	Phasing	60	Size (mm)	86.00
Bottom Logged Interval (m)	412.5	From (m)	400.0	To (m)	401.0
Top Logged Interval (m)	370.0	From (m)		To (m)	
Fluid Type	WATER	From (m)		To (m)	
Level (m)	47.0	From (m)		To (m)	
Wellhead Pressure	0 MPA	From (m)		To (m)	
Max. Recorded Temp.	N/A	From (m)		To (m)	
Estimated Cement Top (m)	N/A	From (m)		To (m)	
Equipment Number	CCL-01	Casing Record			
Unit No. / Location	3002	Size (mm)	Weight (kg/m)	From (m)	To (m)
Recorded By	CLAYTON RICHARD	244.5	53.57	Surface	390.0
Witnessed By	MIKE YOUNG	139.70	20.83	Surface	1562.5
Services		Tubing Record			
Type	Style	Depth (m)			
Bridge Plug					
Packer					
Retainer					
Junk Basket					
Gauge Ring					

All interpretations are opinions based on inferences from electrical or other measurements and we cannot and do not guarantee the accuracy or correctness of any interpretation, and we shall not, except in the case of gross or willful negligence on our part, be liable or responsible for any loss, costs, damages, or expenses incurred or sustained by anyone resulting from any interpretation made by any of our officers, agents or employees. These interpretations are also subject to our general terms and conditions set out in our current Price Schedule.

Correlated to: TITANIUM
Date: FEB 12 23
Log Type: RCBL
Service Order# 23-0247-05
Remarks:

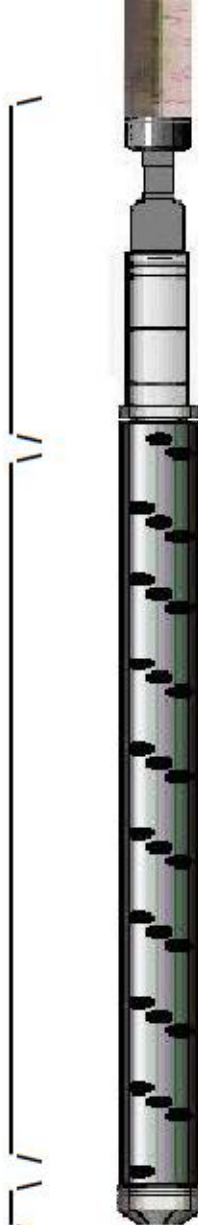
Thank you for using Titanium Energy Services



CCL TO TOP SHOT= 1.2 m

SHOT LENGTH= 1.0 m

DEAD TOOL= 0.3 m



CARRIER DATA:

OWEN 86 mm ERHHC @ 17 spm

CHARGE DATA:

25 GRAM GOODHOLE

INTERVAL(S):

400-401.0 m

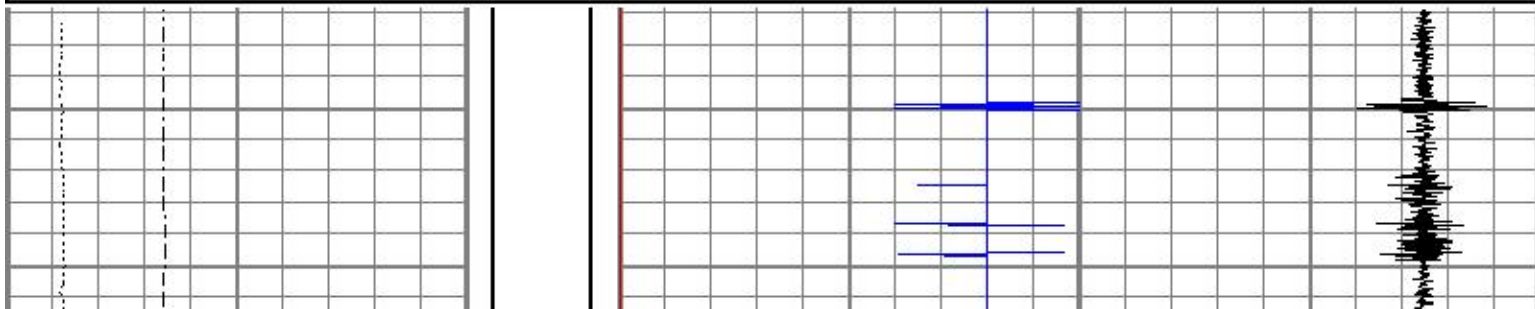
REMARKS:

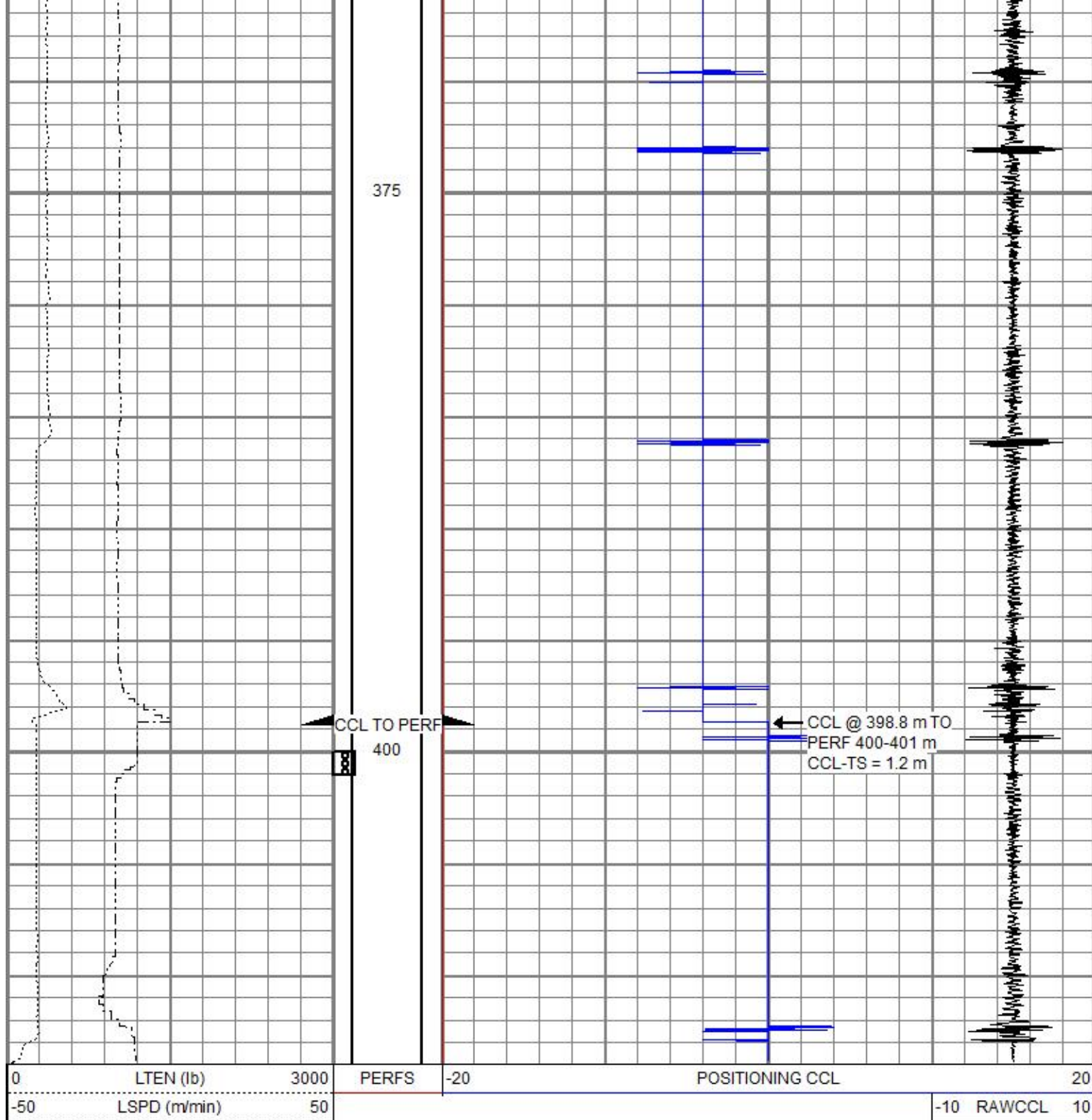


PERFORATE 400.0-401.0 m

Database File elm_nwt\done\strategic_et_al_cameron_l-47perfeb25\wl-1736-300l476010n11730w-elm-perf-feb 25 23.db
Dataset Pathname pass9
Presentation Format ccl_vertical
Dataset Creation Sat Feb 25 09:19:12 2023
Charted by Depth in Meters scaled 1:240

0	LTEN (lb)	3000	PERFS	-20	POSITIONING CCL	20
-50	LSPD (m/min)	50			-10 RAWCCL	10





PERFORATE 400.0-401.0 m



Company STRATEGIC OIL AND GAS LTD.
Well STRATEGIC ET AL
CAMERON L-47
Field Cameron
Province Northwest Territories

