



April 3, 2023

Office of the Regulator of Oil and Gas Operations

PO Box 1320, Yellowknife, NT X1A 2L9

Pauline_DeJong@gov.nt.ca; Mike_Martin@gov.nt.ca; orogo@gov.nt.ca

RE: OROGO Final Operations Report – Cameron L47 – OA-2018-003-SOG

As you are aware, on January 28, 2020 (the “**Receivership Date**”), the Court of Queen’s Bench of Alberta (the “**Court**”) granted an Order pursuant to section 243 of the Bankruptcy and Insolvency Act, RSC 1985, c. B-3 and section 13(2) of the Judicature Act, RSA 2000, c. J-2, whereby Alvarez and Marsal Canada Inc. (the “**NWT Receiver**”) was appointed Receiver, without security, of all of the current and future assets, undertakings and properties of Strategic Oil and Gas Ltd. and Strategic Transmission Ltd. (collectively, “**Strategic**” or the “**Company**”) situated in the Northwest Territories (the “**NWT Property**”). For further information on the Receivership proceedings, please visit the NWT Receiver’s website at: www.alvarezandmarsal.com/sog.

The NWT Receiver, the Government of the Northwest Territories and ELM Inc. (“**ELM**”) entered into an abandonment agreement for the purposes of completing the abandonment work required by the office of the Regulator of Oil and Gas Operations (“**OROGO**”).

The NWT Receiver respectfully endorses the submission made by ELM to OROGO for the purposes of this final operations report.

Should you have any questions or require further information, please contact the undersigned at dmacrae@alvarezandmarsal.com.

Yours truly,

**Alvarez & Marsal Canada Inc., in its capacity as Receiver of
Strategic Oil & Gas Ltd. and Strategic Transmission Ltd.’s NWT Properties
and not in its personal or corporate capacity**

cc: Christopher Gagnon Christopher@elminc.ca

Encl.

April 3, 2023

Office of the Regulator of Oil and Gas Operations

PO Box 1320
Yellowknife NT, X1A 2L9

By Email: orogo@gov.nt.ca

RE: Final Operations Report – Cameron L-47 (ACW-2023-SOG-L-47-WID 1736)

ELM Inc, acting on behalf of Alvarez & Marsal Canada Inc in their capacity as the receiver for Strategic Oil and Gas Ltd submits the following documents as part of the final reporting for this well.

1. Well Termination Record
2. Morning Reports
3. Final well schematic
4. Photographs from cut and cap operation.
5. Perforating logs (sent as a separate email attachment)

This well requires gas migration testing in the frost-free months of 2023 before it can be considered “abandoned”. ELM and Alvarez & Marsal will organize the gas migration testing and inform OROGO as required. Once gas migration testing has been successfully completed, a Change of Well Status form will be submitted.

Should you have any questions or require further information, please contact the undersigned at christopher@elminc.ca

Sincerely,

Christopher Gagnon, EIT

ELM Inc, acting as a consultant to Alvarez & Marsal Canada Inc

WELL TERMINATION RECORD

INSTRUCTIONS:

1. Complete both pages.
2. Send one electronic copy of this form and supporting technical documentation by email to orogo@gov.nt.ca. If you wish to communicate with OROGO in hard copy, please do so using the courier address found at www.orogo.gov.nt.ca.

WELL INFORMATION

Well Name	Strategic et al Cameron L-47	Operator	Strategic Oil & Gas Ltd
Well Type	Development Well (if Other, specify _____)	Contractor	Elm Inc
Well Identifier	1736	Current Well Status	Suspended

RELATED LICENCES AND AUTHORIZATIONS

Operating Licence No.	NWT-OL-2014-007	Operations Authorization	OA - 2018-003-SOG
PRA Licence No.	Production Licence 003	Approval to Alter Condition of Well	ACW - 2023-SOG-L-47-WID 1736

LOCATION INFORMATION

Coordinates Datum: NAD27 (if Other, please specify _____)

Surface	Lat 60 ° 6 ' 31 "	Long 117 ° 39 ' 18 "
Bottom Hole	Lat 60 ° 6 ' 31 "	Long 117 ° 39 ' 18 "

Region: South Sl Unit L Section 47 Grid 60-10N 117-30W

ACTIVITY INFORMATION

Target Formation(s)	Keg River	Field/Pool(s)	Cameron Hills /
Elevation KB/RT	723 m	Ground Level / Seafloor	718.9 m
Spud/Re-entry Date	8 days	Total Depth	1562 m KB
Rig Release Date	February 27, 2023	Total Vertical Depth	1562 m KB

CASING AND CEMENTING PROGRAM

O.D. (mm)	Weight (kg/m)	Grade	Setting Depth (m KB)	Cementing (m³)
244.5	53.57	J-55	390	23.5
139.7	20.83	J-55	1562.5	58.7

--	--	--	--	--	--	--

PLUGGING PROGRAM

Type of Plug	Interval (m KB)	Felt	Setting Depth (m KB)	Cementing (m ³)
Bridge	1449.8-1490	No	1490	0.5
Bridge	1314.9-1335	No	1335	0.5
Cement Retainer	420.1-439.1	No	439.1	2.1
Cement	368.77-416	Yes	368.7	2.1

PERFORATION

Interval (m KB)	Comments
1487-1547	Keg River - Abandoned
1345.0-1345.4	Previous remedial perforation and cement squeeze.
443-444	Remedial Perforation. Squeezed away 1.46 m ³ of cement. Cap retainer w/ 16 m
400-401	Remedial Perforation. Braidenhead squeeze 1.51 m ³ into formation.


OTHER

Lost Circulation/Overpressure Zones	
Equipment Left on Site (Describe)	None
Provision for Re-entry (Describe and attach sketch)	Vented cap 2.1 meters below ground level
Other Downhole Completion/Suspension	
Additional Comments	Well requires gas migration testing in the frost free months of 2023 to be considered "abandoned"

"I certify that the information provided on this form is true and correct"

Name	Duncan MacRae	Phone	(403)538-7514Ext
Title	Vice President	E-Mail	dmacrae@alvarezandmarsal.com
Operator	Alvarez & Marsal Canada Inc., in its capacity as receiver of Strategic Oil & Gas's NWT Property		
Signature	 Responsible Officer of Company	Date	April 3, 2023

NOTE: This sheet is protected. Unprotect the sheet to make changes and protect once complete.

 <div>DAILY REPORT</div>			
CLIENT:	Strategic Oil & Gas C/O Alvarez & Marsal	DATE:	February 12, 2023
UWI:	300/L-47 60-10N 117-30W	Report #:	1
PROJECT MANAGER:	Christopher Gagnon	AFE #:	

Proj # / AFE / Job Number:	STRA050	AFE Amount:	\$163,531.20	\$218,463.82
Project Descriptor:	Well Abandonments			

Cost Coding	Surface Location	60.108860, -117.656000	AREA	Cameron Hills NWT
	License	1736		

EXECUTIVE SUMMARY:

Well Approval (ACW-2023-SOG-L-47-WID1736)

Day 1: Move in with wireline, Hold a pre job safety meeting, remove the well head and RIH with CBL, Install the wellhead and send logs to Elmdownhole. Rg out wireline. Secure and night cap the wellhead. Move off.

Day 2: Move to location, Rig up, pressure test BOP's Install BOP's rig in work floor,

Day 3: Pick up and Run in the hole with open ended tubing, Wellbore fluid is cold and freezing on contact, Was a battle to get pipe in the hole today. Balance 500L of cement on the BP, Pull 14 joints and SDFN

Day 4: Pull and stand pipe, RIH with BP set and pressure test, Balance cement, POOH, Rig in wireline, Perforate the 443 to 444, Attempt to break circ, feed rate was 250L/min @ 5mPa.

Day 5: RIH with retainer, Attempted a circulation up the vent. Set retainer, Rig in cementers, Squeeze and got a 5mPa flat line, Rig out cementers, POOH with tbq.

Day 6: Move in Perforators Perf 400 - 401mKB, got a feed rate of 46L/min @ 7mPa, RIH open ended pipe. SDFN.

Day 7: Move in cementers, Balance a plug from 336 to 416mKB, Pull up 10 jts, Back wash, POOH with tbq string, Squeeze for a flatline.

Day 8: Changed out BOP's Pressure tested the hole to 7 mPa for 15 min, RIH tagged cement top with 5 daN of string weight @ 368.77mKB. Pull and stand tbq in the derrick. Wait on perf interval, Rig out wireline, lay down tubing, Rig out service rig and related equipment.

Day:9 No bubbles on surface vent. Conduct cut and cap on well. Well cut 2.1 meters bellow ground level.



DAILY REPORT

CLIENT:	Strategic Oil & Gas C/O Alvarez & Marsal	DATE :	February 12, 2023
UWI:	300/L-47 60-10N 117-30W	Report #:	1
PROJECT MANAGER:	Christopher Gagnon	AFE #:	
PROJECT NUMBER:	STRA050	AFE Amount:	\$163,531.20
Previous Costs to Date:	\$0.00	Current Days Costs:	\$6,980.00
		% of AFE spent:	4%
		Total Cost to Date:	\$6,980.00

OPERATIONS SUMMARY: Move in with wireline, Hold a pre job safety meeting, remove the well head and RIH with CBL, Install the wellhead and send logs to Elmdownhole. Rg out wireline. Secure and night cap the wellhead. Move off.

SUPERVISION CHARGES

Add new line to ELM CHARGES

SERVICE PROVIDED	Number of units	UNIT	RATE	RESOURCE NAME	Site Supervisor	AMOUNT
Project Supervisor	0.00	day	\$1,200.00		Mike Young	\$0.00
Mileage (Minimum Charge)	0.00	Day	\$150.00			\$0.00
						\$0.00
						\$0.00
						\$0.00
SUBTOTAL						\$0.00
Management Fee:						\$0.00
ELM TOTAL						\$0.00

THIRD PARTY CHARGES

Add new line to THIRD PARTY CHARGES

SERVICE PROVIDED	MAN HOURS	PO#	TICKET #	CONTRACTOR	SUBTOTAL	Est.	AMOUNT
Wireline CBL	8.00		23-0149-06	Titanium	\$6,980.00		\$6,980.00
							\$0.00
							\$0.00
							\$0.00
							\$0.00
MAN HOURS TOTAL					8.00		
SUBTOTAL							\$6,980.00
Management Fee							\$0.00
THIRD PARTY TOTAL							\$6,980.00

To add a line in text box use "alt enter"

Time	Well Abandonments
10:30	Move in wireline unit.
11:00	Issue a safe work permit, ERP, Notice of supervisor and well documentation.
11:30	Conduct a walk around lease and equipment inspection. The set up of the wellsite is limiting access and decided to back in along side the flow line to utilize as much space as possible. Conduct an LEL sweep of the work area, negative results. Break down the SCV assembly to ensure there are no blockages. Reinstall the vent assembly. Make up a bubble tester by installing a 15mm x 40cm clear hose to the vent assembly and submersing the end of the hose into 25mm of fresh water, Monitor for 10 minutes. No bubbles observed.
12:00	Remove the wellhead. Install the wireline flange. Pick up and RIH with CBL. Found fluid level @ 20m from surface. RIH with HSOV to 1487mKB Log CBL to fluid level
14:00	Reinstall the wellhead. Rig out wireline unit, Secure and night cap the well head. Release wireline



CLIENT:	Strategic Oil & Gas C/O Alvarez & Marsal	DATE :	February 21, 2023	
UWI:	300/L-47 60-10N 117-30W	Report #:	2	
PROJECT MANAGER:	Christopher Gagnon		AFE #:	
PROJECT NUMBER:	STRA050	AFE Amount:	\$163,531.20	% of AFE spent: 14%
Previous Costs to Date:	\$6,980.00	Current Days Costs:	\$16,380.15	Total Cost to Date: \$23,360.15

OPERATIONS SUMMARY: Move to location, Rig up, pressure test BOP's Install BOP's rig in work floor,

SUPERVISION CHARGES

Add new line to ELM CHARGES

SERVICE PROVIDED	Number of units	UNIT	RATE	RESOURCE NAME	Site Supervisor	AMOUNT
Project Supervisor	1.00	day	\$1,200.00		Mike Young	\$1,200.00
Mileage (Minimum Charge)	1.00	Day	\$150.00			\$150.00
						\$0.00
						\$0.00
						\$0.00
SUBTOTAL						\$1,350.00
Management Fee:						\$0.00
ELM TOTAL						\$1,350.00

THIRD PARTY CHARGES

Add new line to THIRD PARTY CHARGES

SERVICE PROVIDED	MAN HOURS	PO#	TICKET #	CONTRACTOR	SUBTOTAL	Est.	AMOUNT
Single Service rig	36.00		7282	Roll'n Oilfield Industries	\$7,750.15		\$7,750.15
Boiler	6.00		1226610	Energetic	\$1,325.00		\$1,325.00
Testers	12.00		15231	Proflo	\$4,855.00		\$4,855.00
Air hand			Est	Firemaster	\$265.00		\$265.00
Rentals, Heater,			Est	Conley Max	\$425.00	✓	\$425.00
Rentals Light tower			Est	Pinnacle	\$90.00	✓	\$90.00
Rentals Office shack			Est	Longhorn	\$120.00	✓	\$120.00
Communications			Est	Red Rabbit	\$200.00	✓	\$200.00
							\$0.00
MAN HOURS TOTAL	54.00				SUBTOTAL		\$15,030.15
					Management Fee		\$0.00
					THIRD PARTY TOTAL		\$15,030.15

To add a line in text box use "alt enter"

Time	Well Abandonments
12:00	Move in service rig and related equipment. Conduct a walk around lease and equipment inspection. Spot equipment according to regulator specs
13:00	Hold a tail gate safety meeting with the crew about the rough condition of the lease and to watch your step when walking around.
13:30	Rig up the service rig, pump and tank, accumulator shack and related equipment. Double check the spacing. SICP 0 kPa, Function test the crown saver. Install a bubble tester to the vent assembly by attaching a 15mm hose and submersing the end of the hose into 25mm of windshield washer fluid and monitor for 10 minutes. No bubbles. Picker moved the tubing string from D49 to L47
16:00	Stump test the blinds, pipes, stabbing valve, working spool and pump lines to 1.4mPa and 14mPa for 10 minutes on each stage and element
17:30	Remove the wellhead. Install the BOP's Pressure test the R-45 ring seal and annular bag to 1.4mPa and 7 mPa for 10 minutes on each stage.
18:30	Rig in the work floor and tbq handling equipment.
19:30	Drain and winterize the pump and line. Secure and night cap the wellhead. Fuel equipment



DAILY REPORT

CLIENT:	Strategic Oil & Gas C/O Alvarez & Marsal	DATE :	February 22, 2023
UWI:	300/L-47 60-10N 117-30W	Report #:	3
PROJECT MANAGER:	Christopher Gagnon	AFE #:	
PROJECT NUMBER:	STRA050	AFE Amount:	\$163,531.20
Previous Costs to Date:	\$23,360.15	Current Days Costs:	\$23,422.08
		% of AFE spent:	29%
		Total Cost to Date:	\$46,782.23

OPERATIONS SUMMARY: Pick up and Run in the hole with open ended tubing, Wellbore fluid is cold and freezing on contact, Was a battle to get pipe in the hole today. Balance 500L of cement on the BP, Pull 14 joints and SDFN

SUPERVISION CHARGES

[Add new line to ELM CHARGES](#)

SERVICE PROVIDED	Number of units	UNIT	RATE	RESOURCE NAME	Site Supervisor	AMOUNT
Project Supervisor	1.00	day	\$1,200.00		Mike Young	\$1,200.00
Mileage (Minimum Charge)	1.00	Day	\$150.00			\$150.00
						\$0.00
						\$0.00
						\$0.00
SUBTOTAL						\$1,350.00
Management Fee:						\$0.00
ELM TOTAL						\$1,350.00

THIRD PARTY CHARGES

[Add new line to THIRD PARTY CHARGES](#)

SERVICE PROVIDED	MAN HOURS	PO#	TICKET #	CONTRACTOR	SUBTOTAL	Est.	AMOUNT
Single Service rig	72.00		7283	Roll'n Oilfield Industries	\$12,957.08		\$12,957.08
Boiler	14.00		1226611	Energetic	\$2,650.00		\$2,650.00
Testers	26.00		15231	Proflo	\$5,365.00		\$5,365.00
Air hand			Est	Firemaster	\$265.00		\$265.00
Rentals, Heater,			Est	Conley Max	\$425.00	✓	\$425.00
Rentals Light tower			Est	Pinnacle	\$90.00	✓	\$90.00
Rentals Office shack			Est	Longhorn	\$120.00	✓	\$120.00
Communications			Est	Red Rabbit	\$200.00	✓	\$200.00
							\$0.00
MAN HOURS TOTAL					112.00		
SUBTOTAL							\$22,072.08
Management Fee							\$0.00
THIRD PARTY TOTAL							\$22,072.08

To add a line in text box use "alt enter"

Time	Well Abandonments
07:00	Hold a pre job safety meeting and hazard assessment meeting with the crew. The topics discussed were the job scope for the day, working in cold temps picking up tbgs, rough lease moving traffic in and out of the lease, People coming in and being orientated before leaving the doghouse.
07:30	Conduct a walk around lease and equipment inspection. Function test the crown saver and E-kills, Function test the BOP's.
08:00	Rig in pump lines to pressure test wellbore to 7 mPa for 15 minutes. Held solid. Bleed the pressure off. Rig in the steam line with a check valve to preheat the pump lines while tripping tubing in the hole for displacement.
08:30	Pick up and RIH with 73mm open ended tubing, Use the pump truck to suck back on the displacement. Ran about 8 joints, line pipe froze off. Thaw out the line and continue to trip in the hole. The line froze off again near the pump. Place glycol lines on top of the line pipe as good as we can and place the hot air duct on the line as well. Continue tripping in the hole, Was able to get 30 joints in the hole before freezing off the line again. Called a vac truck to come and suck on the displacement. Rigged in the vac to the casing valve, Tripped in the hole with about 60 joints and the vac hose froze off as well. Thaw out the vac hose and continue in the hole. Tagged the Bridge plug @ 1490.03mKB.
15:00	Release the vac truck. Rig in the pump lines to reverse circulate the well over to clean fresh water. Pumped a total of 20m³ at 500L/min Holding 2mPa back pressure. stop the pump having more freezing issues and thawing lines sitting too long between pumping.
18:00	Batch up 500L of class "G" oilwell cement mixed at 1900kg/m³. Pour cement into the tubing while sucking back on the casing. While holding back pressure on the casing pump 4m³ of water down the tubing on top of the cement to balance the cement plug on the BP at 1490mKB.
19:00	Pull and lay down 14 joints.
20:00	Drain and winterize the pump and lines, Secure and night cap the wellhead. Fuel equipment



DAILY REPORT

CLIENT:	Strategic Oil & Gas C/O Alvarez & Marsal		DATE :	February 23, 2023	
UWI:	300/L-47 60-10N 117-30W		Report #:	4	
PROJECT MANAGER:	Christopher Gagnon		AFE #:		
PROJECT NUMBER:	STRA050	AFE Amount:	\$163,531.20	% of AFE spent:	51%
Previous Costs to Date:	\$46,782.23	Current Days Costs:	\$36,751.08	Total Cost to Date:	\$83,533.31
OPERATIONS SUMMARY:	Pull and stand pipe, RIH with BP set and pressure test, Balance cement, POOH, Rig in wireline, Perforate the 443 to 444, Attempt to break circ, feed rate was 250L/min @ 5mPa.				

SUPERVISION CHARGES

[Add new line to ELM CHARGES](#)

SERVICE PROVIDED	Number of units	UNIT	RATE	RESOURCE NAME	Site Supervisor	AMOUNT
Project Supervisor	1.00	day	\$1,200.00		Mike Young	\$1,200.00
Mileage (Minimum Charge)	1.00	Day	\$150.00			\$150.00
						\$0.00
						\$0.00
						\$0.00
SUBTOTAL						\$1,350.00
Management Fee:						\$0.00
ELM TOTAL						\$1,350.00

THIRD PARTY CHARGES

[Add new line to THIRD PARTY CHARGES](#)

SERVICE PROVIDED	MAN HOURS	PO#	TICKET #	CONTRACTOR	SUBTOTAL	Est.	AMOUNT
Single Service rig	72.00		7284	Roll'n Oilfield Industries	\$12,957.08		\$12,957.08
Boiler	14.00		1226612	Energetic	\$2,685.00		\$2,685.00
Testers	26.00		15232	Proflo	\$2,565.00		\$2,565.00
Air hand			Est	Firemaster	\$265.00		\$265.00
Rentals, Heater,			Est	Conley Max	\$425.00	✓	\$425.00
Rentals Light tower			Est	Pinnacle	\$90.00	✓	\$90.00
Rentals Office shack			Est	Longhorn	\$120.00	✓	\$120.00
Communications			Est	Red Rabbit	\$200.00	✓	\$200.00
Perforating			23-0247-03	Titanium wireline	\$6,370.00		\$6,370.00
Wireline standby			23-0247-02	Titanium wireline	\$4,862.00		\$4,862.00
Wireline standby			23-0247-01	Titanium wireline	\$4,862.00		\$4,862.00
MAN HOURS TOTAL					112.00		
SUBTOTAL							\$35,401.08
Management Fee							\$0.00
THIRD PARTY TOTAL							\$35,401.08

To add a line in text box use "alt enter"

Time	Well Abandonments
07:00	Hold a pre job safety meeting and hazard assessment meeting. The topics discussed were the job scope for the day, Tripping tubing, laying down tbg, working with cold water in cold temps, ice plugs and pressure,
07:30	Conduct a walk around lease and equipment inspection, Warm up the BOP's. Function test the crown saver, E-kills and BOP's.
08:00	Pull and stand tubing in the derrick.
10:00	Make up and RIH with 139.7mm Bridge plug on HM setting tool, RIH and spot and to set the Bridge plug at 1335mKB . Well started displacing water with 39 joints in the hole. The Pump truck can not keep up with sucking back, Called a vac truck. and pulled it off another job. Orogo visited site for a rig inspection Set the plug by filling tbg with 4m3 of fresh water to pressure up to 12mPa. to activate the setting tool. Pick up and pull 10 daN over string weight. Bleed the pressure off. Lower the pipe down onto the plug to hold string weight (8 daN) Pick up and hold 2 daN over string weight and fill the casing to pressure test hole to 7 mPa for 15 minutes. Held solid. Bleed the pressure off. Rotate the tubing to the right 6 rotations to release the setting tool from the Bridge plug.
14:00	Batch up 250L of class G cement mixed at 1900kg/m³ our into the tbg while sucking back on the casing.
15:30	Rig in the pump line to pump 3.5m³ of fresh water down the tbg to balance the cement on top of the bridge plug.
16:00	Pull out of the hole and lay down 80 joints of tbg. Stand 50 joints in the derrick.
18:00	Rig in wireline unit. Hold a pre job safety meeting and hazard assessment meeting. Topics discussed were working around moving wireline and staying off the floor, shutting down all transmitting devices before arming the gun
18:30	Pick up and run in the hole with a 86mm ERHHC 17spm 25 Gr GH charges 1 meter perf gun, Log into position using the Titanium CBL dated Feb 12, 23. Perforate 443 -444mKB. POOH with gun Confirm all shots fired. Rig out wireline unit.
19:00	Rig in the pump lines to forward circulate down the tbg up the vent. Pumped 1.8m³ of fresh water before we started to see pressure, Pumped at 250L/min @ 5mPa. Pumped 3m³ and did not see returns up the vent, Tried to bleed the pressure down quickly and pressure back up a few time and was not successful in getting returns up the surface casing.
20:30	Stop pumping operations drain and winterize the pump and lines. Secure and night cap the well. Fuel equipment



DAILY REPORT

CLIENT:	Strategic Oil & Gas C/O Alvarez & Marsal	DATE :	February 24, 2023
UWI:	300/L-47 60-10N 117-30W	Report #:	5
PROJECT MANAGER:	Christopher Gagnon	AFE #:	
PROJECT NUMBER:	STRA050	AFE Amount:	\$163,531.20
Previous Costs to Date:	\$83,533.31	Current Days Costs:	\$46,909.77
		% of AFE spent:	80%
		Total Cost to Date:	\$130,443.08
OPERATIONS SUMMARY:	RIH with retainer, Attempted a circulation up the vent. Set retainer, Rig in cementers, Squeeze and got a 5mPa flat line, Rig out cementers, POOH with tbg.		

SUPERVISION CHARGES

Add new line to ELM CHARGES

SERVICE PROVIDED	Number of units	UNIT	RATE	RESOURCE NAME	Site Supervisor	AMOUNT
Project Supervisor	1.00	day	\$1,200.00		Mike Young	\$1,200.00
Mileage (Minimum Charge)	1.00	Day	\$150.00			\$150.00
						\$0.00
						\$0.00
						\$0.00
SUBTOTAL						\$1,350.00
Management Fee:						\$0.00
ELM TOTAL						\$1,350.00

THIRD PARTY CHARGES

Add new line to THIRD PARTY CHARGES

SERVICE PROVIDED	MAN HOURS	PO#	TICKET #	CONTRACTOR	SUBTOTAL	Est.	AMOUNT
Single Service rig	50.00		7285	Roll'n Oilfield Industries	\$12,247.73		\$12,247.73
Boiler	10.00		1226613	Energetic	\$2,625.00		\$2,625.00
Testers	20.00		15232	Proflo	\$2,565.00		\$2,565.00
Air hand			Est	Firemaster	\$265.00		\$265.00
Rentals, Heater,			Est	Conley Max	\$425.00	✓	\$425.00
Rentals Light tower			Est	Pinnacle	\$90.00	✓	\$90.00
Rentals Office shack			Est	Longhorn	\$120.00	✓	\$120.00
Communications			Est	Red Rabbit	\$200.00	✓	\$200.00
Cement squeeze	50.00		46683	Calpin Energy	\$23,007.04		\$23,007.04
picker to transfer tubing	18.00		16114	Radar	\$4,015.00		\$4,015.00
MAN HOURS TOTAL					148.00		
SUBTOTAL							\$45,559.77
Management Fee							\$0.00
THIRD PARTY TOTAL							\$45,559.77

To add a line in text box use "alt enter"

Time	Well Abandonments
07:00	Hold a pre job safety meeting and hazard assessment meeting. The topics discussed were tripping in the hole with the retainer ice plugs, cementing operations, PPE working in the cold windy conditions.
07:30	Conduct a walk around lease and equipment inspection SICP 1000kPa. Thaw out the casing and ensure there is no ice plugs. Function test the crown saver E-kills and BOP's
08:00	Make up and RIH with 139.7mm cement retainer. Ran 12 joints and we started displacing. The pump truck triplex will not suck on the casing, Rigged up a trashpump to suck the displacement out and pump it to the rig tank while tripping in the hole with tubing.
09:30	Rig in the pump line Pump down the casing 50L/min @ 3mPa watch the vent for returns, Pumped a total of 1m³ Increase the rate to 500L/min and pumped 1m³ and still no communication up the vent. Stop the pump and allow the well to bleed back to the rig tank.
10:30	Spot and set the retainer @ 439.14mKB by picking up 1 meter, Rotate tubing to the right 13 rotations Lower tbg back down to set depth. Pick up tbg and pull 10 daN over to pack off the element. Set string weight down on the plug (5daN) Rig in the pump line to pressure test the annulus to 7 mPa for 15 minutes. Held solid. Bleed the pressure off.
12:00	Rig in the cementers Hold a pre job tail gate safety meeting. The topics discussed were cementing operations keeping good radio communications
12:25	pressure test surface equipment to 12mPa
12:53	Obtain a feed rate of 110L/min @ 5mPa.
12:58	Prehydrate and mix - n - pump 2.1m³ (2.2 ton) CGL1800kg/m³ 0.8% CDFL + 3% CaCl₂ pump rate of 200L/min pumped a total of 1m³ below the retainer before switching over to slow rate pumper. final pressure after pumping 200L of water behind the cement was 3.8mPa.
13:55	Starting pressure 3.8mPa. Start the slow rate pumper at 10L/min and slow it down to 5L/min as we approached 5 mPa. pumped 437L of water
15:17	Stop and hesitate for 10 minutes.
15:27	Restart the pump with the pressure down to 4.7mPa at 10L/min pumped 20 L to get 5mpa. Stop the pump
15:29	Restart the pump with the pressure down to 4.8mPa Pumped 10L to get 5 mPa. Stop the pump and flat lined the pressure at 4.9mPa for 10 minutes.
15:36	Pull the retainer to Nutral and Bleed off the pressure. Sting out and balance 500L of slurry on top of the retainer.
15:45	Pull and lay down 2 joints Rig in the pump line to backwash. leaving 16m of cement on top of the retainer Squeezed 1.46m³ into formation. 0.064m³ below retainer 0.190m³ above retainer backwashed 0.38m³
16:45	Pull and stand tubing in the derrick. Return the Stinger to Caliber hand.
17:30	Secure and night cap the well head. Drain and winterize the pump and lines, Fuel equipment.



DAILY REPORT

CLIENT:	Strategic Oil & Gas C/O Alvarez & Marsal		DATE :	February 25, 2023	
UWI:	300/L-47 60-10N 117-30W		Report #:	6	
PROJECT MANAGER:	Christopher Gagnon		AFE #:		
PROJECT NUMBER:	STRA050	AFE Amount:	\$163,531.20	% of AFE spent:	94%
Previous Costs to Date:	\$130,443.08	Current Days Costs:	\$22,495.60	Total Cost to Date:	\$152,938.68
OPERATIONS SUMMARY:	Move in Perforators Perf 400 - 401mKB, got a feed rate of 46L/min @ 7mPa, RIH open ended pipe. SDFN.				

SUPERVISION CHARGES

[Add new line to ELM CHARGES](#)

SERVICE PROVIDED	Number of units	UNIT	RATE	RESOURCE NAME	Site Supervisor	AMOUNT
Project Supervisor	1.00	day	\$1,200.00		Mike Young	\$1,200.00
Mileage (Minimum Charge)	1.00	Day	\$150.00			\$150.00
						\$0.00
						\$0.00
						\$0.00
SUBTOTAL						\$1,350.00
Management Fee:						\$0.00
ELM TOTAL						\$1,350.00

THIRD PARTY CHARGES

[Add new line to THIRD PARTY CHARGES](#)

SERVICE PROVIDED	MAN HOURS	PO#	TICKET #	CONTRACTOR	SUBTOTAL	Est.	AMOUNT
Single Service rig	50.00	Scope Change	7286	Roll'n Oilfield Industries	\$9,646.60		\$9,646.60
Boiler	10.00	Scope Change	1226614	Energetic	\$2,400.00		\$2,400.00
Testers	20.00	Scope Change	15232	Proflo	\$2,565.00		\$2,565.00
Air hand		Scope Change	Est	Firemaster	\$265.00		\$265.00
Rentals, Heater,			Est	Conley Max	\$425.00	✓	\$425.00
Rentals Light tower			Est	Pinnacle	\$90.00	✓	\$90.00
Rentals Office shack			Est	Longhorn	\$120.00	✓	\$120.00
Communications			Est	Red Rabbit	\$200.00	✓	\$200.00
Perforating		Scope Change	230247-05	Titanium wireline	\$5,434.00		\$5,434.00
MAN HOURS TOTAL		80.00	SUBTOTAL				\$21,145.60
Management Fee							\$0.00
THIRD PARTY TOTAL							\$21,145.60

To add a line in text box use "alt enter"

Time	Well Abandonments
07:00	Arrive on location
10:00	Hold a pre job safety meeting and hazard assessment meeting. The topics discussed were perforating operations, Shutting down all transmitting devices, working with wireline.
10:30	Rig in wireline unit. Pick up and RIH with a 86mm ERHHC 17spm 25 Gr GH charges 1 meter perf gun, Log into position using the Titanium CBL dated Feb 12, 23. Perforate 400 -401mKB. POOH with gun, confirm all shots fired. Rig out wireline unit.
11:00	Rig in the pump lines to attempt to break circ. Fill hole with 1.2m³ of fresh water, Pressure up to 3mPa and bleed off to 0 kPa, repeat this a few times while monitoring the vent. no communication Repeated this process while increasing pressure by 1 MPa at a time and eventually for a feed rate of 46L/min at 7 MPa. Pumped 0.5m³
12:00	Stopped and the pressure did not bleed down in 10 minutes. Bleed the pressure off.
12:15	Rig in the trash pump to suck back on the casing and pump the water to the rig tank.
	Trip in the hole with open ended 73mm tbg and spot tbg bottom @ 416mKB.
13:00	Secure and night cap the well, Drain and winterize the pump and lines. Fuel equipment.



DAILY REPORT

CLIENT:	Strategic Oil & Gas C/O Alvarez & Marsal	DATE :	February 26, 2023
UWI:	300/L-47 60-10N 117-30W	Report #:	7
PROJECT MANAGER:	Christopher Gagnon	AFE #:	
PROJECT NUMBER:	STRA050	AFE Amount:	\$163,531.20
Previous Costs to Date:	\$152,938.68	% of AFE spent:	109%
		Current Days Costs:	\$25,892.24
		Total Cost to Date:	\$178,830.92

OPERATIONS SUMMARY: Move in cementers, Blance a plug from 336 to 416mKB, Pull up 10 jts, Back wash, POOH with tbq string, Squeeze for a flatline.

SUPERVISION CHARGES

Add new line to ELM CHARGES

SERVICE PROVIDED	Number of units	UNIT	RATE	RESOURCE NAME	Site Supervisor	AMOUNT
Project Supervisor	1.00	day	\$1,200.00		Mike Young	\$1,200.00
Mileage (Minimum Charge)	1.00	Day	\$150.00			\$150.00
						\$0.00
						\$0.00
						\$0.00
SUBTOTAL						\$1,350.00
Management Fee:						\$0.00
ELM TOTAL						\$1,350.00

THIRD PARTY CHARGES

Add new line to THIRD PARTY CHARGES

SERVICE PROVIDED	MAN HOURS	PO#	TICKET #	CONTRACTOR	SUBTOTAL	Est.	AMOUNT
Single Service rig	50.00	Scope Change	7287	Roll'n Oilfield Industries	\$7,516.60		\$7,516.60
Boiler	10.00	Scope Change	1226615	Energetic	\$2,265.00		\$2,265.00
Testers	20.00		15232	Proflo	\$2,565.00		\$2,565.00
Air hand		Scope Change	Est	Firemaster	\$265.00		\$265.00
Rentals, Heater,			Est	Conley Max	\$425.00	✓	\$425.00
Rentals Light tower			Est	Pinnacle	\$90.00	✓	\$90.00
Rentals Office shack			Est	Longhorn	\$120.00	✓	\$120.00
Communications			Est	Red Rabbit	\$200.00	✓	\$200.00
Cementers	24.00	Scope Change	46704	Calpin	\$10,095.64		\$10,095.64
Vac truck	5.00	Scope Change	110216	Miktye	\$1,000.00		\$1,000.00
MAN HOURS TOTAL					109.00		
SUBTOTAL							\$24,542.24
Management Fee							\$0.00
THIRD PARTY TOTAL							\$24,542.24

To add a line in text box use "alt enter"

Time	Well Abandonments
08:00	Arrive on location
09:30	Cementers arrived on location
12:30	Water and vac arrived on location.
13:00	Hold a pre job safety meeting and hazard assessment meeting. The topics discussed were cementing operations, Squeezing, backwashing and warming up the wellhead.
13:30	Rig in cementers, tank truck and vac truck.
13:41	Break forward circulation and pump 0.5m³.
13:45	Prehydrate mix water, Mix (1.2ton) 1m³ of HSL cement + 0.8% CDFL + 2% CaCl² mixed @ 1800kg/m³
13:50	Balance the plug by pumping the 1m³ down the tubing followed by 1.5m³ of fresh water while holding 3mPa back pressure on the casing.
14:00	Stop the pump, Pull 10 joints out of the hole slowly.
14:10	Rig in the C&A to backwash 1.5m³.
14:40	Pull and stand the remaining tubing in the derrick. Secure and night cap the well
14:45	Fill casing with 300L of water.
15:24	Pumped 300L and squeezed to 7 mPa. Stop for 5 minutes, Bleed down to 5mPa.
15:29	Bump the pressure up, Pumped 100L to get back to 7 mPa. Stop for 10 minutes, Pressure bleed down to 5 mPa.
15:38	Bump the pressure up to 7 mPa, Pumped 50L pressure bled down to 5.5mPa in 10 minutes.
15:48	Bump the pressure up to 7 mPa, Pumped 50L pressure bled down to 6 mPa in 10 minutes.
16:30	Shut the well in and bleed the pressure off, Rig out cementers. Night cap the well.
17:00	Fuel equipment
	Squeezed 500L of slurry into formation Expected cement top is @ 380mKB



DAILY REPORT

CLIENT:	Strategic Oil & Gas C/O Alvarez & Marsal	DATE :	February 27, 2023
UWI:	300/L-47 60-10N 117-30W	Report #:	8
PROJECT MANAGER:	Christopher Gagnon	AFE #:	
PROJECT NUMBER:	STRA050	AFE Amount:	\$163,531.20
Previous Costs to Date:	\$178,830.92	Current Days Costs:	\$33,187.40
		% of AFE spent:	130%
		Total Cost to Date:	\$212,018.32

OPERATIONS SUMMARY: Changed out BOP's Pressure tested the hole to 7 mPa for 15 min, RIH tagged cement top with 5 daN of string weight @ 368.77mKB. Pull and stand tbg in the derrick. Wait on perf interval, Rig out wireline, lay down tubing, Rig out service rig and related equipment.

SUPERVISION CHARGES

Add new line to ELM CHARGES

SERVICE PROVIDED	Number of units	UNIT	RATE	RESOURCE NAME	Site Supervisor	AMOUNT
Project Supervisor	1.00	day	\$1,200.00		Mike Young	\$1,200.00
Mileage (Minimum Charge)	1.00	Day	\$150.00			\$150.00
						\$0.00
						\$0.00
						\$0.00
SUBTOTAL						\$1,350.00
Management Fee:						\$0.00
ELM TOTAL						\$1,350.00

THIRD PARTY CHARGES

Add new line to THIRD PARTY CHARGES

SERVICE PROVIDED	MAN HOURS	PO#	TICKET #	CONTRACTOR	SUBTOTAL	Est.	AMOUNT
Single Service rig	65.00		3723	Roll'n Oilfield Industries	\$11,432.40		\$11,432.40
Boiler	13.00		1226616	Energetic	\$2,615.00		\$2,615.00
Testers	25.00		15232	Proflo	\$2,565.00		\$2,565.00
Air hand trailer extra day			Est	Firemaster	\$530.00		\$530.00
Rentals, Heater,			Est	Conley Max	\$425.00	✓	\$425.00
Rentals Light tower			Est	Pinnacle	\$90.00	✓	\$90.00
Rentals Office shack			Est	Longhorn	\$120.00	✓	\$120.00
Communications			Est	Red Rabbit	\$200.00	✓	\$200.00
Wireline standby			23024706	Titanium Wireline	\$4,862.00		\$4,862.00
Wireline standby			23024707	Titanium Wireline	\$5,798.00		\$5,798.00
Bplugs and cement			Est	Caliber tools	\$3,200.00	✓	\$3,200.00
MAN HOURS TOTAL							103.00
SUBTOTAL							\$31,837.40
Management Fee							\$0.00
THIRD PARTY TOTAL							\$31,837.40

To add a line in text box use "alt enter"

Time	Well Abandonments
07:00	Hold a pre job safety meeting and hazard assessment meeting. The topics discussed were changing out BOP's, pressure testing the wellbore and BOP's, tag for cement top and rigging in wireliners, establishing circulation, cleaning up returns. Running a retainer for cement job.
07:30	Conduct a walk around lease and equipment inspection. SICP 128kPa. Bleed the pressure off and it was still water. Function test the E-kills, and crown saver & BOP's,
08:00	The BOP function test failed. Found the blind rams were hydraulically by-passing. Rig out the work floor, Remove the annular bag off the BOP's and set it on the ground. Remove the Double gate BOP's and install the new Double gate BOP's onto the work spool. Install the annular bag on top of the double gates. Rig in the work floor. Function test the BOP's everything is working as per regulation specs.
09:00	Install a tbg hanger in the well with a cap. Rig in the pump lines to pressure test the Ring seals, Blinds, pipes, working spool and valve, stabbing valve to 1.4mPa and 14mPa for 10 minutes on each stage and element. With the pup joint installed pressure test the annular bag to 1.4mPa and 7 mPa for 10 minutes on each stage. Everything held good. Pressure test the hole to 7 mPa for 15 minutes. Held solid. Bleed the pressure off.
10:00	Run in the hole with the tubing string to tag for cement top. Tagged at 368.77mKB with 5daN string weight
10:30	Pull and stand tubing in the derrick. Wait on perf interval. Move in and rig up wireline.
14:00	Received the order to rig out and move to H58.
14:30	Rig out wireliners, Lay down tubing out of the derrick.
16:30	Rig out the work floor, Remove the BOP's Install the wellhead. Rig out the service rig and related equipment.
19:00	Rig out the pump and tank, P-tank and Flair stack,
	Well is ready for cut and cap, Wellhead riser and 144 jts of 73mm tbg are left on location.



DAILY REPORT

CLIENT:	Strategic Oil & Gas C/O Alvarez & Marsal		DATE :	March 10, 2023	
UWI:	300/L-47 60-10N 117-30W		Report #:	9	
PROJECT MANAGER:	Christopher Gagnon		AFE #:		
PROJECT NUMBER:	STRA050	AFE Amount:	\$163,531.20	% of AFE spent:	134%
Previous Costs to Date:	\$212,018.32	Current Days Costs:	\$6,445.50	Total Cost to Date:	\$218,463.82

OPERATIONS SUMMARY: No bubbles on surface vent. Conduct cut and cap on well. Well cut 2.1 meters below existing ground level.

SUPERVISION CHARGES

Add new line to ELM CHARGES

SERVICE PROVIDED	Number of units	UNIT	RATE	RESOURCE NAME	Site Supervisor	AMOUNT
Project Supervisor	0.33	day	\$1,200.00		Scott Simpson 825-522-3350	\$396.00
Mileage (Minimum Charge)	0.33	Day	\$150.00			\$49.50
						\$0.00
						\$0.00
						\$0.00
SUBTOTAL						\$445.50
Management Fee:						\$0.00
ELM TOTAL						\$445.50

THIRD PARTY CHARGES

Add new line to THIRD PARTY CHARGES

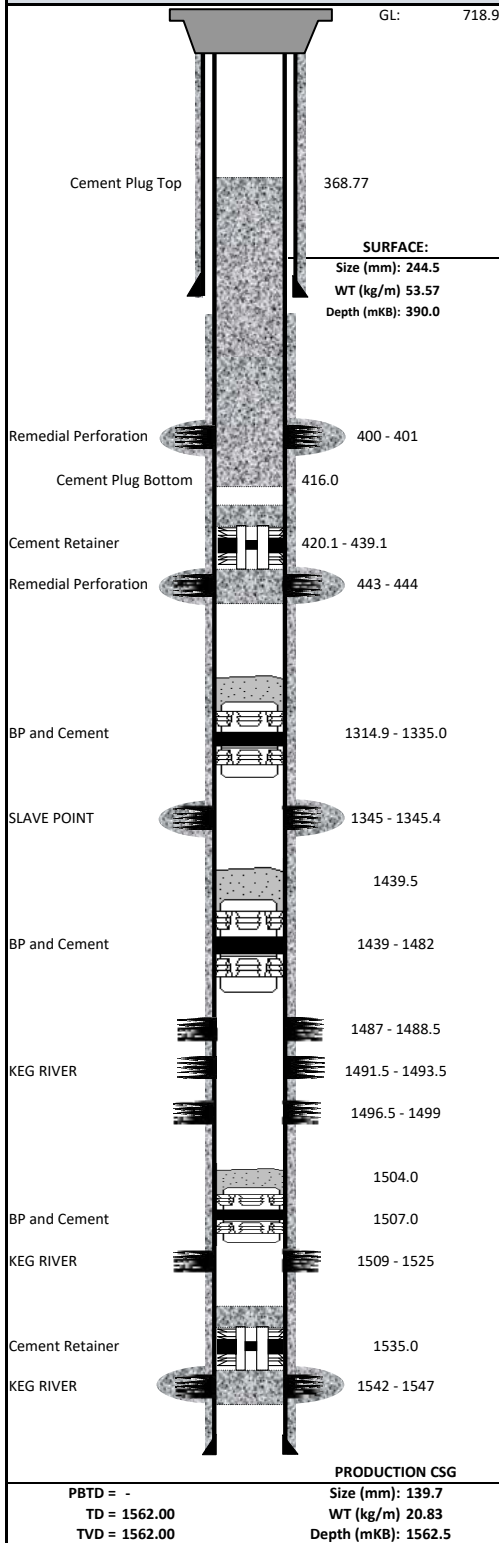
SERVICE PROVIDED	MAN HOURS	PO#	TICKET #	CONTRACTOR	SUBTOTAL	Est.	AMOUNT
Jet Cutter				Innovative	\$4,500.00	✓	\$4,500.00
Hydro vac				Innovative	\$1,500.00	✓	\$1,500.00
							\$0.00
							\$0.00
							\$0.00
							\$0.00
MAN HOURS TOTAL					0.00		
SUBTOTAL							\$6,000.00
Management Fee							\$0.00
THIRD PARTY TOTAL							\$6,000.00

To add a line in text box use "alt enter"

Time	Well Abandonments
10:00	Held pre job safety meeting with Innovative cut crew and Sierra vac driver. Reviewed ELM erp and safe work permit. Discussed daily hazards and operations. Snow covered lease conditions lots of moving equipment all moving equipment must have spotters.
10:30	Sweep location for LELs installed bubble tester into surface vent. Removed top section of wellhead, wellhead was frozen at surface. Thawed wellhead down 3 meters with hydro vac steamer installed bubble tester into vent. Monitored for 10 minutes no bubbles on vent. Confirmed wellhead coordinates 60.1088,-117.6565.
11:30	Proceed to cutting wellhead. Installed cutting tool into wellbore. Daylightd around wellhead confirmed 16 inch conductor barrel. Set jet pressure and made one full rotation with cutter.
13:30	Pulled up and removed wellhead and conductor barrel. Measured and confirmed wellhead cut off 2.1 meters below existing ground level. Installed vented cap with well LSD and license number. Filled hole dug hole with hydr vac 1 meter north of well for wellsite sign. Cemented sign 1 meter in the ground sign facing north. Loaded all old wellhead components cleaned up around location. Prepared to move equipment. Took cut truck back to camp and filled with potable water. Moved equipment to H-58

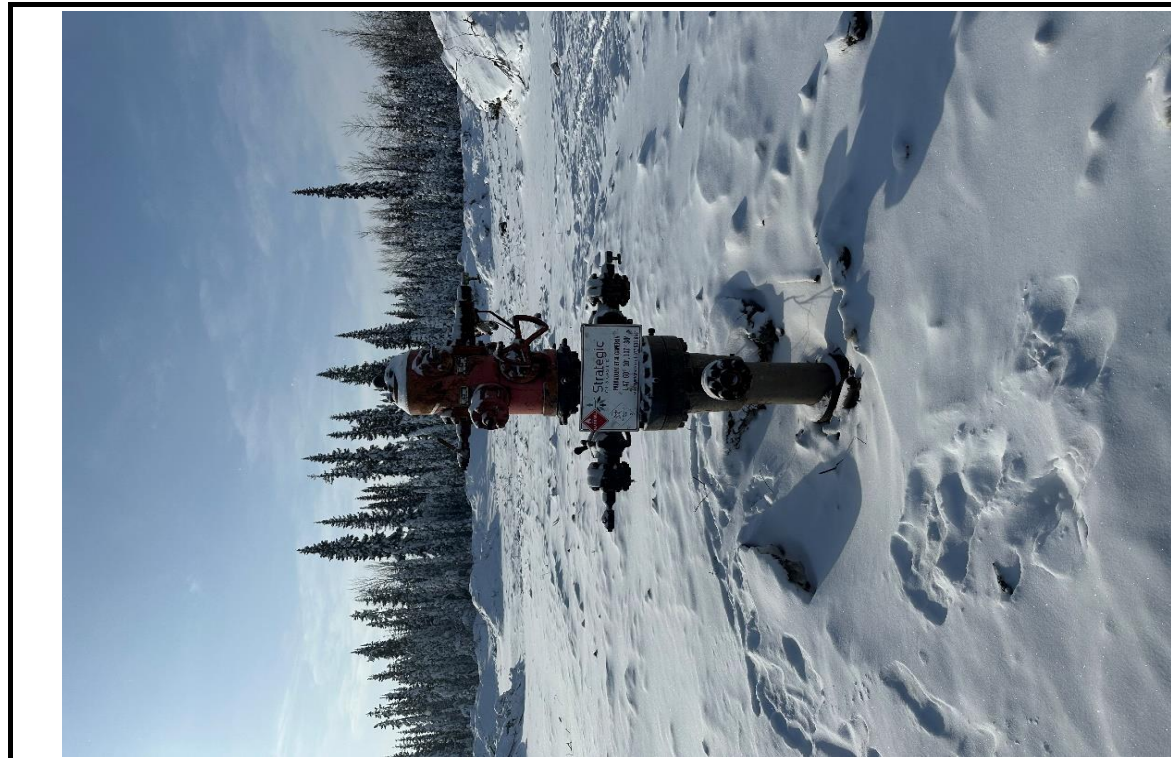


FINAL WELL DIAGRAM



GENERAL DETAILS						REV #		1.0				
WELL NAME:		Strategic et al Cameron L-47			FIELD:		Cameron Hills					
UWI:		300/L-47 60-10N 117-30W			LICENSE:		1736					
SURFACE:					LATITUDE:		60°06'31"		LONGITUDE:	-117°39'18"		
COMPANY:		Strategic Oil And Gas Ltd			DRAWN BY:		C. Gagnon		DATE:	03 Apr 2023		
DEVIATION:					WELL STATUS:							
Vertical					Suspended							
ELEVATIONS & DEPTHS												
KB (mKB)		GL (m)		KB-SCF (m)		KB-GR (m)		BGWP (mKB)		PBTD (mKB)	TD (mKB)	TVD (mKB)
723		718.9				4.10		600.00			1562	1562
CASING STRINGS												
STRING			SIZE (mm)		WEIGHT (kg/m)		GRADE		CPLG		DRIFT I.D. (mm)	SHOE DEPTH (mKB)
Surface:			244.5		53.57		J-55					390
Intermediate:												
Production:			139.7		20.83		J-55					1562.5
Liner:												
Open Hole:												
CEMENTING												
STRING			DETAIL						Returns (m ²)		Log Cmt Top (mKB)	Calc'd Top (mKB)
Surface:			31 T 0-1-0 G + 3% CaCl2						6 CRET			
Production:			12 T 0-1-0 G + 1% NFL1 + 0.1% SPC12000 41 T 0-1-8 + 0.5% T10						NONE			
COMPLETION DATA												
DESCRIPTION				DEPTH (mKB)				STATUS				
Keg River				1542 - 1547				Abandoned				
Cement Retainer w/ 3m hydromite				1535								
Keg River				1509.5 - 1525				Abandoned				
Bridge Plug w/ 3m hydromite				1504 - 1507								
Keg River				1496.5 - 1499				Abandoned				
Keg River				1491.5 - 1493.5				Abandoned				
Keg River				1487 - 1488.5				Abandoned				
PBP and 42m Cement				1439 - 1482								
Slave Point				1345 - 1345.4				Abandoned				
PBP and 20.1m Cement				1314.9 - 1335.0								
Remedial Perforation				443 - 444				Cement Squeezed - 1.43 m3 into perfs				
Cement Retainer w/ 16 m cement				420.1 - 439.1								
Remedial Perforation				400 - 401				Cement squeezed - 1.51 m3 into perfs				
Cement Plug				368.77 - 416.0				Braidenhead squeeze				

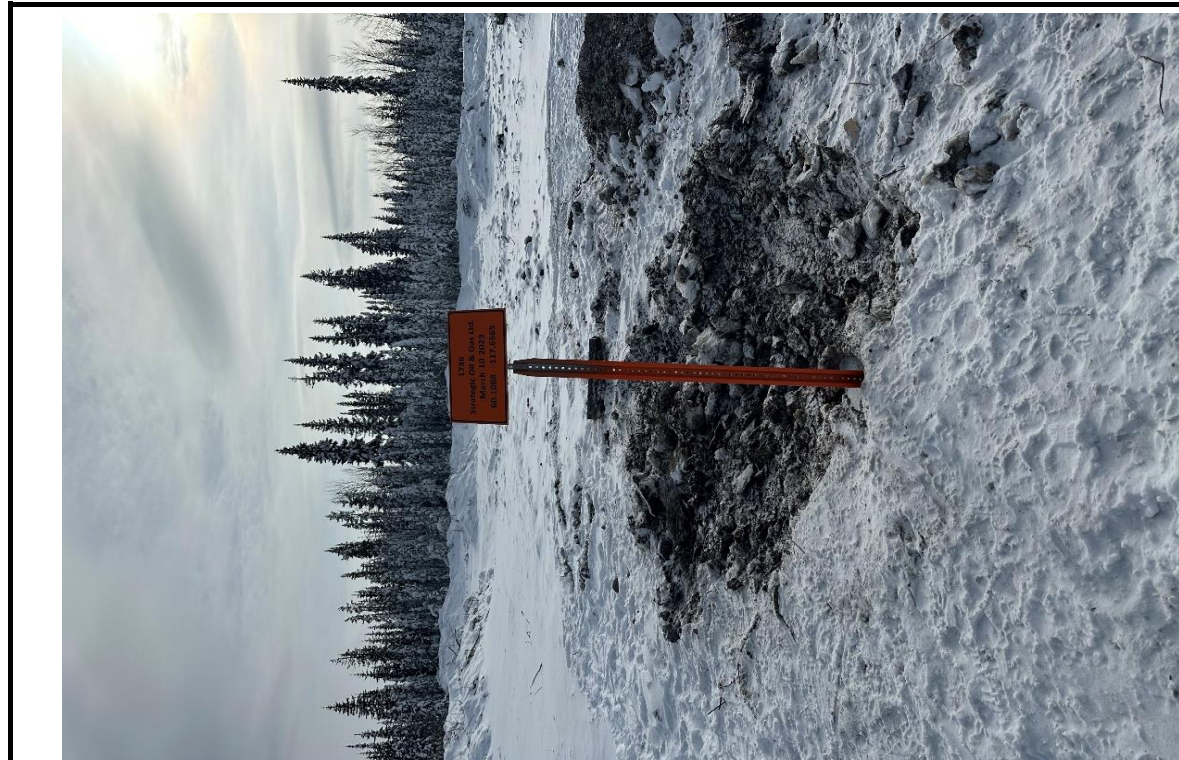
CAMERON L-47



L-47 Wellhead



Vented cap



Sign placed on north side of the wellhead and facing north

Insert Comment