



Perforation Record

Company Strategic Oil & Gas Ltd.

Well STRATEGIC ET AL SWEDE

Field G-21 60-20N 117-30W

Province Northwest Territories

Unique Well Identifier: 300G216020117300
Canadian Well Identifier: G-21
Surface Location: G-21
LSD. 60 SEC. 20 TWP. 117 RGE. 30 W. Well Licence # 1764

Permanent Datum Ground Level Elevation (m) 757.20 Elevations (m)
Log Measured From 4.50m Above Permanent Datum K.B. 761.70
Drilling Measured From Kelly Bushing C.F.
G.L. 757.20

Company
Well
Field
Province.

Strategic Oil & Gas Ltd.
STRATEGIC ET AL SWEDE
G-21 60-20N 117-30W
Swede
Northwest Territories

Date January 23, 2023

Run Number One

Depth - Driller (m) 1652.00

Depth - Logger (m) Not Tagged

Bottom Logged Interval (m) 507.50

Top Logged Interval (m) 438.50

Fluid Type Water

Level (m) Full

Wellhead Pressure 0.00

Max. Recorded Temp. N/A

Estimated Cement Top (m) N/A

Equipment Number 02

Unit No. / Location 3002

Recorded By B. Williams

Witnessed By S. Cole

Services

Bridge Plug

Packer

Retainer

Junk Basket

Gauge Ring

Other Services

Tubing Record

Perforated Intervals

All interpretations are opinions based on inferences from electrical or other measurements and we cannot and do not guarantee the accuracy or correctness of any interpretation, and we shall not, except in the case of gross or willful negligence on our part, be liable or responsible for any loss, costs, damages, or expenses incurred or sustained by anyone resulting from any interpretation made by any of our officers, agents or employees. These interpretations are also subject to our general terms and conditions set out in our current Price Schedule.

Correlated to: No Logs To Correlate To @ Time Of Logging

Date:

Log Type:

Service Order# 23-0024-24

Remarks: - Center Of CCI To Top Shot= 1.20m.
- Penshift On CCL Curve Indicates Firing Depth.

Thank you for using Titanium Energy Services

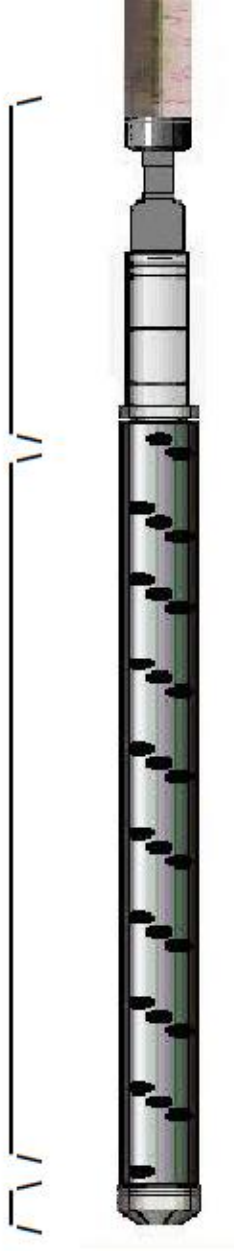


PERF RUN NO: 1

CCL TO TOP SHOT= 1.20m

SHOT LENGTH= 1.00m

DEAD TOOL= 0.30m



CARRIER DATA:

Owen Oil Tool 86mm 17 SPM 60°

CHARGE DATA:

25gr Good Hole

INTERVAL(S):

483.00 - 484.00mKB

REMARKS:

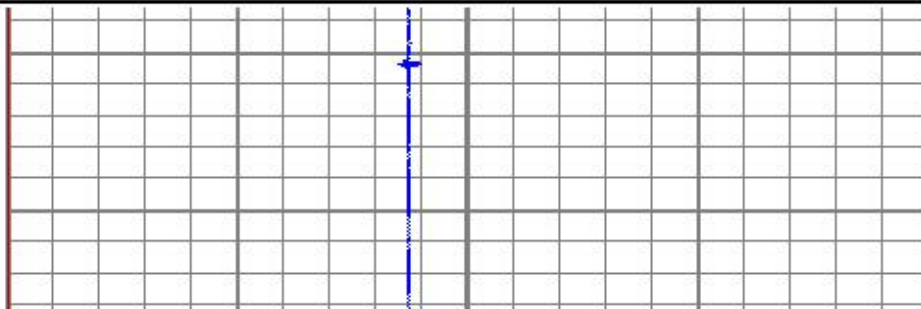
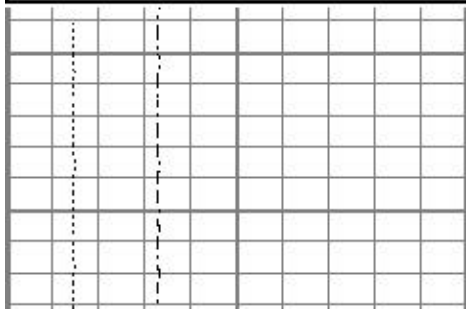


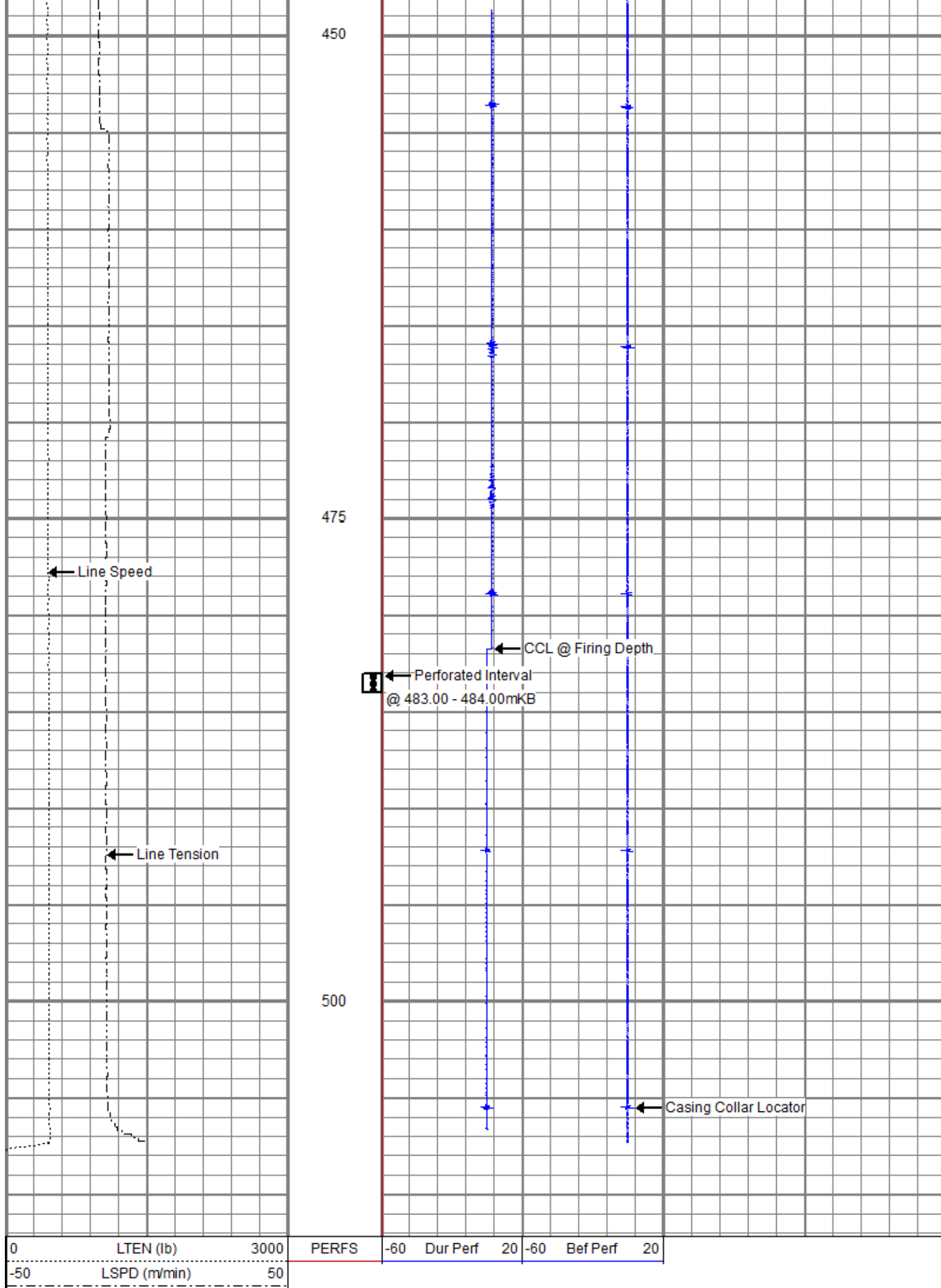
Perforation Record

@ 483.00 - 484.00mKB

Database File elm_nwt\done\strategic_et_al_swede_g-21_60-20n_117-30w\wl_1964_300g216020117300_elm_perf_jan 23 2023.db
Dataset Pathname pass1
Presentation Format ccl_vertical
Dataset Creation Mon Jan 23 12:13:28 2023
Charted by Depth in Meters scaled 1:240

0	LTEN (lb)	3000	PERFS	-60	Dur Perf	20	-60	Bef Perf	20
-50	LSPD (m/min)	50							







Perforation Record

@ 483.00 - 484.00mKB



Company Strategic Oil & Gas Ltd.

Well STRATEGIC ET AL SWEDE
G-21 60-20N 117-30W

Field Swede

Province Northwest Territories