



Perforation
Record

Company Strategic Oil & Gas Ltd.				
Well STRATEGIC ET AL CAMERON C-50				
Field Cameron				
Province Northwest Territories				
Company Strategic Oil & Gas Ltd.				
Well STRATEGIC ET AL CAMERON C-50				
Field Cameron				
Province Northwest Territories				
Unique Well Identifier: 300/C-50 60-10N 117-30W				
Canadian Well Identifier: See Remarks				
Surface Location: Well Licence # 1608				
LSD. 60 SEC. 10 TWP. 117 RGE. 30 W.				
Permanent Datum	Ground Level	Elevation (m)	688.40	Elevations (m)
Log Measured From	4.30m	Above Permanent Datum		K.B. 692.70
Drilling Measured From	Kelly Bushing			C.F.
				G.L. 688.40
Date	January 24, 2023	Perforated Intervals		
Run Number	One	Gun Type	ERHSC	
Depth - Driller (m)	1569.00	SPM	17	Gram (g)
Depth - Logger (m)	Not Tagged	Phasing	60°	Size (mm)
Bottom Logged Interval (m)	420.00	From (m)	400.00	To (m)
Top Logged Interval (m)	363.30	From (m)		To (m)
Fluid Type	Water	From (m)		To (m)
Level (m)	142.00	From (m)		To (m)
Wellhead Pressure	0.00	From (m)		To (m)
Max. Recorded Temp.	N/A	From (m)		To (m)
Estimated Cement Top (m)	N/A	From (m)		To (m)
Equipment Number	12	Casing Record		
Unit No. / Location	3002	Size (mm)	Weight (kg/m)	From (m)
Recorded By	B. Williams	244.50	53.57	Surface
Witnessed By	T. Schmidt	139.70	20.83	Surface
Services		Tubing Record		
Bridge Plug	Type	Style	Depth (m)	
Packer				
Retainer				
Junk Basket				
Gauge Ring				
		Other Services		

All interpretations are opinions based on inferences from electrical or other measurements and we cannot and do not guarantee the accuracy or correctness of any interpretation, and we shall not, except in the case of gross or willful negligence on our part, be liable or responsible for any loss, costs, damages, or expenses incurred or sustained by anyone resulting from any interpretation made by any of our officers, agents or employees. These interpretations are also subject to our general terms and conditions set out in our current Price Schedule.

Correlated to: Titanium Energy Services

Date: January 19, 2023

Log Type: RCBL-GR-CCL

Service Order# 23-0024-27

Remarks: - Surface Location: 60.150993-117.644056
- Center Of CCL To Top Shot= 1.20m.
- Penshift On CCL Curve Indicates Firing Depth.

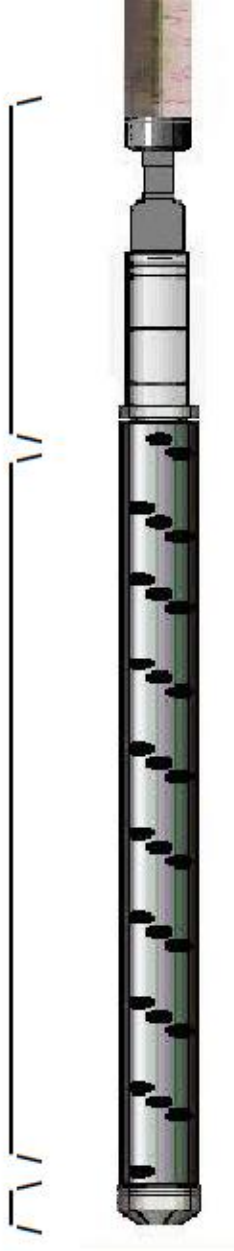
Thank you for using Titanium Energy Services



CCL TO TOP SHOT= 1.20m

SHOT LENGTH= 1.00m

DEAD TOOL= 0.30m



CARRIER DATA:

Owen Oil Tool 86mm 17 SPM 60°

CHARGE DATA:

25gr Good Hole

INTERVAL(S):

400.00 - 401.00mKB

REMARKS:

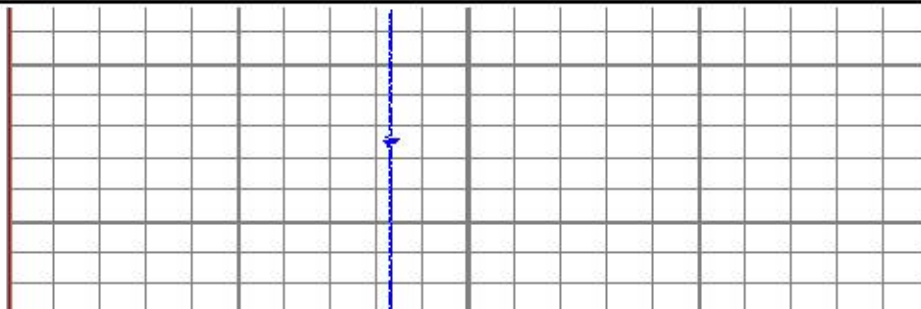
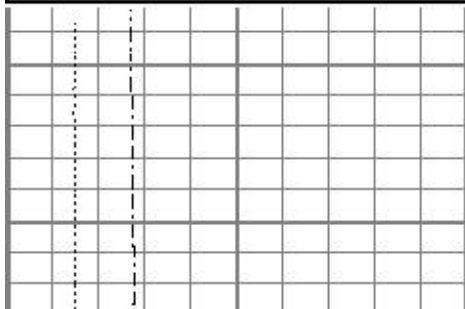


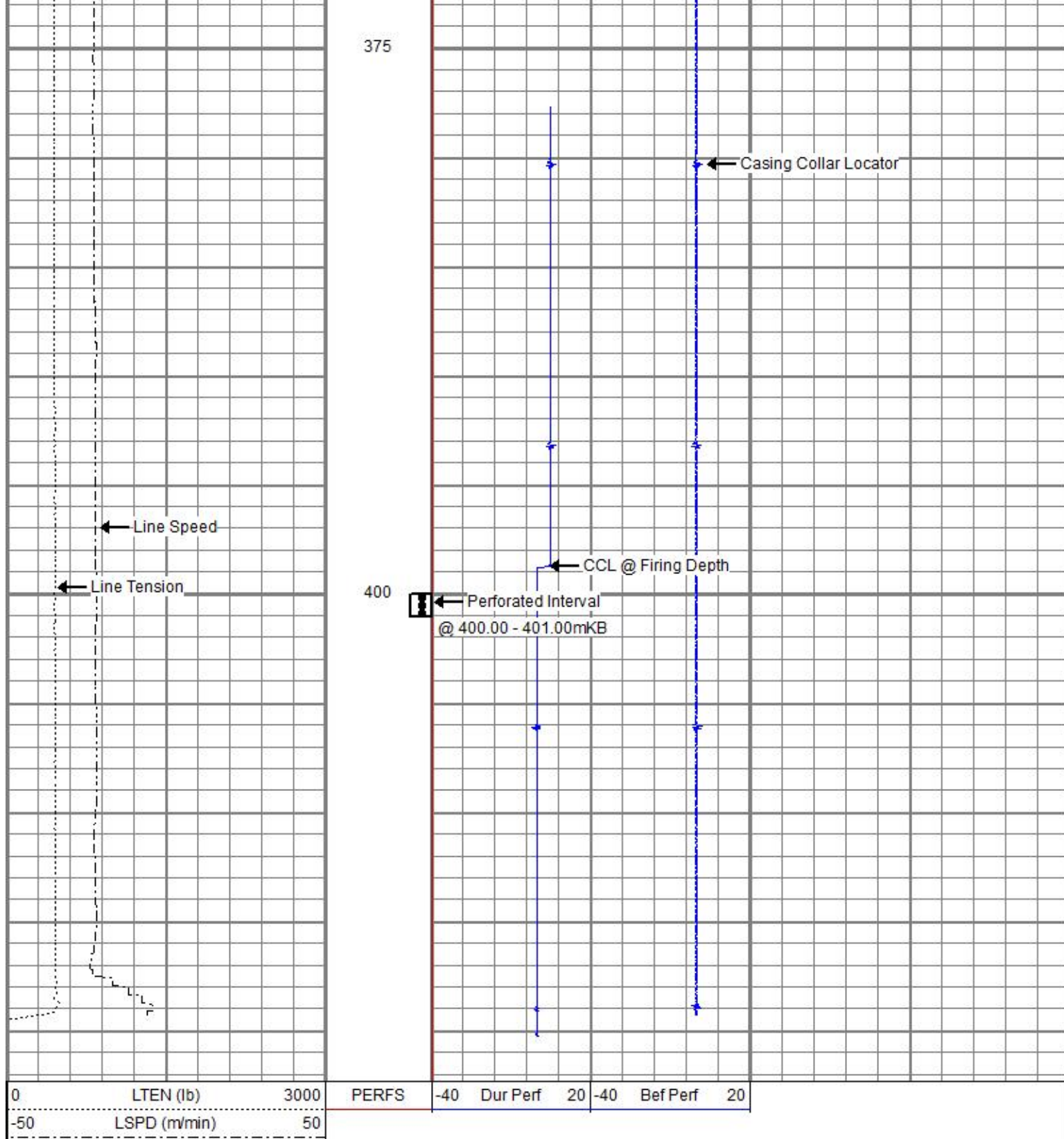
Perforation Record

@ 400.00 - 401.00mKB

Database File elm_nwt\elm c-50 perf jan 24 2023\wl_1608_300c5060-10n117-30w_elm_perf_jan 24 2023.db
Dataset Pathname pass1
Presentation Format ccl_vertical
Dataset Creation Tue Jan 24 15:58:00 2023
Charted by Depth in Meters scaled 1:240

0	LTEN (lb)	3000	PERFS	-40	Dur Perf	20	-40	Bef Perf	20
-50	LSPD (m/min)	50							





Perforation Record

@ 400.00 - 401.00mKB



Company Strategic Oil & Gas Ltd.

Well STRATEGIC ET AL
CAMERON C-50

Field Cameron

	Province Northwest Territories
--	--------------------------------