



March 29, 2023

Office of the Regulator of Oil and Gas Operations

PO Box 1320, Yellowknife, NT X1A 2L9

Pauline_DeJong@gov.nt.ca; Mike_Martin@gov.nt.ca; orogo@gov.nt.ca

RE: OROGO Final Operations Report – Cameron A73 – OA-2018-003-SOG

As you are aware, on January 28, 2020 (the “**Receivership Date**”), the Court of Queen’s Bench of Alberta (the “**Court**”) granted an Order pursuant to section 243 of the Bankruptcy and Insolvency Act, RSC 1985, c. B-3 and section 13(2) of the Judicature Act, RSA 2000, c. J-2, whereby Alvarez and Marsal Canada Inc. (the “**NWT Receiver**”) was appointed Receiver, without security, of all of the current and future assets, undertakings and properties of Strategic Oil and Gas Ltd. and Strategic Transmission Ltd. (collectively, “**Strategic**” or the “**Company**”) situated in the Northwest Territories (the “**NWT Property**”). For further information on the Receivership proceedings, please visit the NWT Receiver’s website at: www.alvarezandmarsal.com/sog.

The NWT Receiver, the Government of the Northwest Territories and ELM Inc. (“**ELM**”) entered into an abandonment agreement for the purposes of completing the abandonment work required by the office of the Regulator of Oil and Gas Operations (“**OROGO**”).

The NWT Receiver respectfully endorses the submission made by ELM to OROGO for the purposes of this final operations report.

Should you have any questions or require further information, please contact the undersigned at dmacrae@alvarezandmarsal.com.

Yours truly,

**Alvarez & Marsal Canada Inc., in its capacity as Receiver of
Strategic Oil & Gas Ltd. and Strategic Transmission Ltd.’s NWT Properties
and not in its personal or corporate capacity**

cc: Christopher Gagnon Christopher@elminc.ca

Encl.

March 29, 2023

Office of the Regulator of Oil and Gas Operations

PO Box 1320
Yellowknife NT, X1A 2L9

By Email: orogo@gov.nt.ca

RE: Final Operations Report – Cameron A-73 (ACW-2021-SOG-A-73-WID 1747)

ELM Inc, acting on behalf of Alvarez & Marsal Canada Inc in their capacity as the receiver for Strategic Oil and Gas Ltd submits the following documents as part of the final reporting for this well.

1. Well Termination Record
2. Morning Reports
3. Final well schematic
4. Photographs from cut and cap operation.

The change of well status form will be sent as a separate attachment.

Should you have any questions or require further information, please contact the undersigned at christopher@elminc.ca

Sincerely,

Christopher Gagnon, EIT

ELM Inc, acting as a consultant to Alvarez & Marsal Canada Inc

WELL TERMINATION RECORD

INSTRUCTIONS:

1. Complete both pages.
2. Send one electronic copy of this form and supporting technical documentation by email to orogo@gov.nt.ca. If you wish to communicate with OROGO in hard copy, please do so using the courier address found at www.orogo.gov.nt.ca.

WELL INFORMATION

Well Name	Strategic et al Cameron A-73	Operator	Strategic Oil & Gas Ltd
Well Type	Exploratory Well (if Other, specify _____)	Contractor	Elm Inc
Well Identifier	1747	Current Well Status	Abandoned

RELATED LICENCES AND AUTHORIZATIONS

Operating Licence No.	NWT-OL-2014-007	Operations Authorization	OA - 2018-003-SOG
PRA Licence No.	Production Licence 16	Approval to Alter Condition of Well	ACW - 2021-SOG-A-73-WID 1747

LOCATION INFORMATION

Coordinates Datum: NAD83 (if Other, please specify _____)

Surface	Lat 60 ° 12 ' 9 "	Long 117 ° 43 ' 33 "
Bottom Hole	Lat 60 ° 12 ' 9 "	Long 117 ° 43 ' 33 "

Region: South Sl Unit A Section 73 Grid 60-20N 117-30W

ACTIVITY INFORMATION

Target Formation(s)	Keg River / Sulphur PT	Field/Pool(s)	Cameron Hills /
Elevation KB/RT	679.6 m	Ground Level / Seafloor	675.6 m
Spud/Re-entry Date	6 days	Total Depth	1585 m KB
Rig Release Date	February 14, 2023	Total Vertical Depth	1585 m KB

CASING AND CEMENTING PROGRAM

O.D. (mm)	Weight (kg/m)	Grade	Setting Depth (m KB)	Cementing (m³)
244.5	53.57	J-55	416.0	26.6
139.7	23.007	K-55	1582.3	107.45

--	--	--	--	--	--	--

PLUGGING PROGRAM

Type of Plug	Interval (m KB)	Felt	Setting Depth (m KB)	Cementing (m ³)
Bridge	1414.8-1455	No	1455	0.5
Bridge	1316.8-1357	Select	1357	0.5
Select	-	Select		
Select	-	Select		

PERFORATION

Interval (m KB)	Comments
1462.5-1464.0	Keg River - Abandoned
1367.0-1379.5	Sulphur Point - Abandoned. Refer to diagram for exact perforation intervals.
-	
-	


OTHER

Lost Circulation/Overpressure Zones	
Equipment Left on Site (Describe)	None
Provision for Re-entry (Describe and attach sketch)	Vented cap 2.1 meters below ground level
Other Downhole Completion/Suspension	
Additional Comments	

"I certify that the information provided on this form is true and correct"

Name	Duncan MacRae	Phone	(403)538-7514Ext
Title	Vice President	E-Mail	dmacrae@alvarezandmarsal.com
Operator	Alvarez & Marsal Canada Inc., in its capacity as receiver of Strategic Oil & Gas's NWT Property		
Signature	 Responsible Officer of Company	Date	March 29, 2023

NOTE: This sheet is protected. Unprotect the sheet to make changes and protect once complete.

 DAILY REPORT			
CLIENT:	Strategic Oil & Gas C/O Alvarez & Marsal	DATE:	February 9, 2023
UWI:	300/A-73 60-20N 117-30W	Report #:	1
PROJECT MANAGER:	Christopher Gagnon	AFE #:	

Proj # / AFE / Job Number:	STRA050	AFE Amount:	\$146,641.95	\$195,183.79
Project Descriptor:	Well Abandonments			

Cost Coding	Surface Location	60.202492, -117.725841	AREA	Cameron Hills NWT
	License	1747		

EXECUTIVE SUMMARY:

NWT App: ACW-2021-SOG-A-73-WID 1747

Day 1: Moved in service rig and related equipment.

Day 2: Installed and pressure tested class III BOP stack, rigged in the slickliners. Unset packer and pulled tubing from the well. Run in with the mud motor.

Day 3: Ran in with 68-joints of tubing, hung up in the perforations with mud motor, drilled and cleaned up perfs, continued in the well and drilled out bridge plug. Pulled the tubing from the well.

Day 4: Ran in the well with bridge plug on baker tool, set and pressure tested with packer, pulled packer from the well and dump bail 500 liters of cement on plug. Pulled dump bailer, made up and ran in the hole with one step with bridge plug and parked at 1357.0 mKB for the night.

Day 5: Set bridge plug, pressure tested wellbore, rotated off plug and balanced cement. Pulled and laid out tubing string. Rigged in wireline unit and completed RBL log.

Day 6: Rigged out equipment, clean the rig tank and prepared to move to B-8 location.

Day 7: Mob to site, cut truck broke down on km 47 hill. Wait on parts

Day 8: Mob to site. No bubbles on surface vent. Conduct cut and cap on well. Could not pull wellhead free.

Day 9: Dig down beside wellhead to break wellhead free. Well cut off 2.1 meters below existing ground level. Cemented wellsite sign 1 meter in ground.



DAILY REPORT

CLIENT:	Strategic Oil & Gas C/O Alvarez & Marsal	DATE :	February 9, 2023
UWI:	300/A-73 60-20N 117-30W	Report #:	1
PROJECT MANAGER:	Christopher Gagnon	AFE #:	
PROJECT NUMBER:	STRA050	AFE Amount:	\$146,641.95
Previous Costs to Date:	\$0.00	Current Days Costs:	\$18,149.30
		% of AFE spent:	12%
		Total Cost to Date:	\$18,149.30
OPERATIONS SUMMARY:	Moved Triumph double rig from F-75 to A-73 (2 hr move) Rig up service rig and support equipment.		

SUPERVISION CHARGES

[Add new line to ELM CHARGES](#)

SERVICE PROVIDED	Number of units	UNIT	RATE	RESOURCE NAME	Site Supervisor	AMOUNT
Project Supervisor	1.00	day	\$1,200.00		Shannon Cole	\$1,200.00
Mileage (Minimum Charge)	1.00	Day	\$150.00			\$150.00
Office Trailer	1.00	Day	\$125.00			\$125.00
						\$0.00
						\$0.00
SUBTOTAL						\$1,475.00
Management Fee:						\$0.00
ELM TOTAL						\$1,475.00

THIRD PARTY CHARGES

[Add new line to THIRD PARTY CHARGES](#)

SERVICE PROVIDED	MAN HOURS	PO#	TICKET #	CONTRACTOR	SUBTOTAL	Est.	AMOUNT
Service rig	50.00		23020902ELM2	Triumph Well Servicing	\$5,466.00		\$5,466.00
Boiler	14.00		106225	Miktye Trucking	\$2,392.50		\$2,392.50
Air Hand	6.00		J000047140214	Fire Master	\$1,058.00		\$1,058.00
Testers	12.00		20514	Stack Production Testing	\$3,370.00		\$3,370.00
Slickline	N/A		0027-00160	Maverick Specialties	\$3,100.00		\$3,100.00
Light tower	N/A		75049	Pinnacle Services	\$1,287.80		\$1,287.80
							\$0.00
MAN HOURS TOTAL					82.00		
SUBTOTAL							\$16,674.30
Management Fee							\$0.00
THIRD PARTY TOTAL							\$16,674.30

To add a line in text box use "alt enter"

Time	Well Abandonments
14:00	Traveled to wellsite and scouted February 8th, complete LEL sweeps, completed visual wellsite inspection, measured out leased sizes Moved in the service rig and support equipment. Parked on site and held pre-job safety meeting, issued safe work permits, fire and explosion reviewed, signed and posted emergency response and transportation plans. Some of the topics were, spotting matting, moving equipment on location, use spotters, icy surfaces, and trip hazards.
16:30	Spotted matting and rigged in the service rig, pump truck, crew change unit, boiler, testers stack and P-Tank, flameless heater, light tower. Completed COEDC inspection and transferred 13.0 m3 of fresh water to the rig tank.
19:00	Winterized and fueled equipment. SDFN



DAILY REPORT

CLIENT:	Strategic Oil & Gas C/O Alvarez & Marsal		DATE :	February 10, 2023	
UWI:	300/A-73 60-20N 117-30W		Report #:	2	
PROJECT MANAGER:	Christopher Gagnon		AFE #:		
PROJECT NUMBER:	STRA050	AFE Amount:	\$146,641.95	% of AFE spent:	34%
Previous Costs to Date:	\$18,149.30	Current Days Costs:	\$31,511.00	Total Cost to Date:	\$49,660.30

OPERATIONS SUMMARY: Installed and pressure tested class III BOP stack, rigged in the slickliners. Unset packer and pulled tubing from the well. Run in with the mud motor.

SUPERVISION CHARGES

[Add new line to ELM CHARGES](#)

SERVICE PROVIDED	Number of units	UNIT	RATE	RESOURCE NAME	Site Supervisor	AMOUNT
Project Supervisor	1.00	day	\$1,200.00		Shannon Cole	\$1,200.00
Mileage (Minimum Charge)	1.00	Day	\$150.00			\$150.00
Office Trailer	1.00	Day	\$125.00			\$125.00
						\$0.00
						\$0.00
SUBTOTAL						\$1,475.00
Management Fee:						\$0.00
ELM TOTAL						\$1,475.00

THIRD PARTY CHARGES

[Add new line to THIRD PARTY CHARGES](#)

SERVICE PROVIDED	MAN HOURS	PO#	TICKET #	CONTRACTOR	SUBTOTAL	Est.	AMOUNT
Service rig	60.00		23021002ELM	Triumph Well Servicing	\$11,001.00		\$11,001.00
Boiler	14.00		106226	Miktye Trucking	\$2,310.00		\$2,310.00
Air Hand	12.00		J000047140214	Fire Master	\$990.00		\$990.00
Testers	24.00		20515	Stack Production Testing	\$3,050.00		\$3,050.00
Slickline	12.00		0027-00161	Maverick Specialties	\$4,785.00		\$4,785.00
Vacuum Truck (Warrens Well)	18.00		108939	Miktye Trucking	\$3,600.00		\$3,600.00
Vacuum Truck (Warrens Well)			108938	Miktye Trucking	\$4,300.00		\$4,300.00
MAN HOURS TOTAL					140.00	SUBTOTAL	\$30,036.00
						Management Fee	\$0.00
						THIRD PARTY TOTAL	\$30,036.00

To add a line in text box use "alt enter"

Time	Well Abandonments
5:45	Traveled to subject location.
06:30	Arrived on worksite complete LEL sweeps, completed visual wellsite inspection. Held pre-job safety meeting, reviewed safe work permits, fire and explosion. discussed emergency response and transportation plans. Some of the topics were, installing BOP's, overhead loads, swing hazards, spotting slickliners, moving wireline, line of fire, moving equipment on location, use spotters, icy surfaces, and trip hazards.
07:00	Recorded pressures and pulled h2s sample SICP 10 kPa; SITP - 20 kPa with 0% h2s present at time of test. Bled off pressure.
07:15	Stump tested blind rams and safety valve, surface lines, manifold and spool to 1.4 MPa and 21 MPa and held pressure test for 10-minutes each test. Removed top section from the wellhead, installed Class III BOP stack and pressure tested pipe rams to 1.4 MPa and 21 MPa and held each test for 10-minutes. Pressure tested annular bag to 1.4 MPa and 7.0 MPa, held for 10-minutes and bled off bled off pressure. Tied pump into the annulus and pressure tested the casing to 7.0 Mpa and held for 10-minutes.
09:00	Moved in Maverick Slickline, held pre-job safety meeting, issued safe work permit, reviewed emergency response and transportation plans, discussed fire and explosion and built hazard assessments. Spotted wireline unit, made up 76.0 mm lubricator, pack-off head, flow-tee and BOP, installed onto the master valve, rigged in the pump line and pressure tested the lubricator to 7.0 MPa, opened master valve and pressured up the tubing to 7.0 MPa and held for 10-minutes. Ran in the well with 50.8 mm SB pulling tool, latched onto the prong at 1362.0 mKB and pulled from the well. Made up and installed GS pulling tool, tied lubricator in the top section and pressure tested connections to 7.0 MPa. Opened master valve and ran in the well to 1362.0 mKB and latched on to PX plug body, pulled up and unseated, pulled plug from well. Laid out lubricator, rigged out slickline unit and released to camp.
11:00	Attempted to back out lag screw without success, two lag bolts are seized and will not back out. Broke studs out and stripped off class III BOP stack. Sprayed penetrating oil and worked lag bolts. After working lags for 20-minutes they started to back out. Re-Installed BOP stack and rigged in work floor and tripping equipment. Pressure tested rig groove seal and pipe rams to 1.4 MPa low and 21.0 MPa high for 10-minutes.
14:00	Turning tubing string 1/4 turn to the right, released packer. Hoisted tubing up 0.5 m and parked tubing, allowed packer 15-minutes to relax. Started out of the well, pulled heavy and catching casing colars on the way out of the well. Pulled tubing at a safe operating speed and stood 73.0 mm tubing in the tubing boards. Tallied on the way out of the well. Tubing appears to be in excellent condition.
16:30	Made up 73.0 mm SS 150 Bico mudmotor as follows: 120.65 mm (4-3/4) Tri-cone bit, Reg x Pac XO, mud motor, XO, disconnect, XO, 1,2 m pup followed by 73.0 mm tubing string. Ran in the well with 10-joints of tubing, tied in pumpline, pressure tested to 7.0 MPA, opened valve and pumped down tubing at 100 litres per/min, motor is turning. Good test. Continued in the well with 73.0 mm tubing. Ran in with 74-joints total.
19:00	Winterized and fueled equipment. SDFN



DAILY REPORT

CLIENT:	Strategic Oil & Gas C/O Alvarez & Marsal		DATE :	February 11, 2023	
UWI:	300/A-73 60-20N 117-30W		Report #:	3	
PROJECT MANAGER:	Christopher Gagnon		AFE #:		
PROJECT NUMBER:	STRA050	AFE Amount:	\$146,641.95	% of AFE spent:	51%
Previous Costs to Date:	\$49,660.30	Current Days Costs:	\$24,474.35	Total Cost to Date:	\$74,134.65

OPERATIONS SUMMARY: Ran in with 68-joints of tubing, hung up in the perforations with mud motor, drilled and cleaned up perms, continued in the well and drilled out bridge plug. Pulled the tubing from the well.

SUPERVISION CHARGES

[Add new line to ELM CHARGES](#)

SERVICE PROVIDED	Number of units	UNIT	RATE	RESOURCE NAME	Site Supervisor	AMOUNT
Project Supervisor	1.00	day	\$1,200.00		Shannon Cole	\$1,200.00
Mileage (Minimum Charge)	1.00	Day	\$150.00			\$150.00
Office Trailer	1.00	Day	\$125.00			\$125.00
						\$0.00
						\$0.00
SUBTOTAL						\$1,475.00
Management Fee:						\$0.00
ELM TOTAL						\$1,475.00

THIRD PARTY CHARGES

[Add new line to THIRD PARTY CHARGES](#)

SERVICE PROVIDED	MAN HOURS	PO#	TICKET #	CONTRACTOR	SUBTOTAL	Est.	AMOUNT
Service rig	60.00		23021102ELM	Triumph Well Servicing	\$10,895.00		\$10,895.00
Boiler	14.00		106227	Miktye Trucking	\$2,392.50		\$2,392.50
Air Hand	12.00		1	Fire Master	\$990.00		\$990.00
Testers	24.00		20347	Stack Production Testing	\$3,170.00		\$3,170.00
Communications	N/A		2	Red Rabbit			\$0.00
Vacuum Truck (Standby)	N/A		110204	Miktye Trucking	\$2,000.00		\$2,000.00
Mud motor	N/A		4	Calibre Tools	\$3,551.85	✓	\$3,551.85
MAN HOURS TOTAL					110.00	SUBTOTAL	\$22,999.35
						Management Fee	\$0.00
						THIRD PARTY TOTAL	\$22,999.35

To add a line in text box use "alt enter"

Time	Well Abandonments
05:45	Traveled to subject location.
06:30	Arrived on worksite complete LEL sweeps, completed visual wellsite inspection. Held pre-job safety meeting, reviewed safe work permits, fire and explosion. discussed emergency response and transportation plans. Some of the topics were, installing BOP's, overhead loads, swing hazards, drilling out BP, line of fire, moving equipment on location, use spotters, icy surfaces, and trip hazards.
07:00	Recorded pressures and pulled h2s sample SICP 0 kPa; SITP - 0 kPa with 0% h2s present at time of test. Bled off pressure.
07:15	Ran in the well with 69-joints of tubing tagged obstruction at 1439.0 mKB in perforations, hoisted tubing and lowered a second time placing 4 dAN weight but could not go through. Moved in tank truck and off-loaded 20.0 m3 into rig tank. (34 m3 total) sent truck for 2nd load.
09:00	Made up swivel and kelly onto tool joint, hoisted and installed pack-off head, pumped 4.4 m3 down tubing and with no returns to surface started to lower down the tubing string, drilling through the tight spots in the perforations, worked tubing up and down to ensure perforations are open and clear. Made up 2nd connection, and kicked in pump at 300 liters per/min with zero pressure, the bit is rotating at approximately 300 RPM per/min, continued to lower through the perforations, taking weight and drilling off as we lowered through the perforations, started to recover fluid returns at the rig tank, worked bit up to the top of the tubing joint and lowered back down, tagged bridge plug at 1380.0 mKB and started to drill out, pumping 350 liters per/min, 3.0 MPa pressure and rotating bit at approximately 35 RPM, returns at the rig tank are about 100 liters per/min 1/3 of the rate we are pumping. Two trucks arrived with 32 m3 total and off-loaded into the rig tank. Continued drilling and through the plug. Circulated well for an additional 20-minutes (7.0 m3). the returns clean at the rig tank. Lost 50 m3 total, of fresh water to the Sulphur Point formation.
16:00	Rigged out swivel and Kelly hose. Picked up 7-joints of 73.0 mm tubing and ran down to 1450.10 mKB. Pulled out of the well with 152 jts of 73.0 mm tubing and stood in the tubing boards. Made up HDMI tool and prepared to run in the morning.
18:30	Secure the well. Winterized and fueled equipment.



DAILY REPORT

CLIENT:	Strategic Oil & Gas C/O Alvarez & Marsal		DATE :	February 12, 2023	
UWI:	300/A-73 60-20N 117-30W		Report #:	4	
PROJECT MANAGER:	Christopher Gagnon		AFE #:		
PROJECT NUMBER:	STRA050	AFE Amount:	\$146,641.95	% of AFE spent:	68%
Previous Costs to Date:	\$74,134.65	Current Days Costs:	\$25,602.50	Total Cost to Date:	\$99,737.15

OPERATIONS SUMMARY: Ran in the well with bridge plug on baker tool, set and pressure tested with packer, pulled packer from the well and dump bail 500 liters of cement on plug. Pulled dump bailer, made up and ran in the hole with one step with bridge plug and parked at 1357.0 mKB for the night.

SUPERVISION CHARGES

Add new line to ELM CHARGES

SERVICE PROVIDED	Number of units	UNIT	RATE	RESOURCE NAME	Site Supervisor	AMOUNT
Project Supervisor	1.00	day	\$1,200.00		Shannon Cole	\$1,200.00
Mileage (Minimum Charge)	1.00	Day	\$150.00			\$150.00
Office Trailer	1.00	Day	\$125.00			\$125.00
						\$0.00
						\$0.00
SUBTOTAL						\$1,475.00
Management Fee:						\$0.00
ELM TOTAL						\$1,475.00

THIRD PARTY CHARGES

Add new line to THIRD PARTY CHARGES

SERVICE PROVIDED	MAN HOURS	PO#	TICKET #	CONTRACTOR	SUBTOTAL	Est.	AMOUNT
Service rig	60.00		23021202ELM	Triumph Well Servicing	\$10,895.00		\$10,895.00
Boiler	14.00		106228	Miktye Trucking	\$2,392.50		\$2,392.50
Air Hand	12.00		J000047140214	Fire Master	\$990.00		\$990.00
Testers	24.00		20582	Stack Production Testing	\$3,050.00		\$3,050.00
Vacuum truck go secure than to drayton	9.00		106240	Miktye Trucking	\$1,800.00		\$1,800.00
Vacuum Truck go to camp from Drayton	12.00		108998	Miktye Trucking	\$2,600.00		\$2,600.00
Vacuum Truck go to camp from Drayton			106239	Miktye Trucking	\$2,400.00		\$2,400.00
MAN HOURS TOTAL					131.00	SUBTOTAL	\$24,127.50
						Management Fee	\$0.00
						THIRD PARTY TOTAL	\$24,127.50

To add a line in text box use "alt enter"

Time	Well Abandonments
05:45	Traveled to subject location. -12 no wind
06:30	Arrived on worksite complete LEL sweeps, completed visual wellsite inspection. Held pre-job safety meeting, reviewed safe work permits, fire and explosion. discussed emergency response and transportation plans. Some of the topics were, installing BOP's, overhead loads, swing hazards, drilling out BP, line of fire, moving equipment on location, use spotters, icy surfaces, and trip hazards.
07:00	Recorded pressures SICP vacuum kPa; SITP - N/A
07:15	Made up Baker setting tool on 139.7 mm packer and ran in the well as follow: 139.7 mm KAPPA 10K permanent bridge plug, baker setting tool, packer and tubing to surface. Ran in the well and parked the bridge plug center element at 1455.0 mKB Filled the tubing with 4.6 m3 of fresh water, pressured up to 10.0 MPa and set plug, hoisted the tubing string and set the packer. Filled tubing with 1.0 m3 of fresh water and pressure tested the bridge plug to 7.0 MPa and held pressure for 15-minutes.
10:00	Unset packer and pulled tubing from the well, laid out the packer and Baker setting gear on the ground. Packer is still in good condition.
12:30	Installed dump bailer on the bottom of the tubing and ran in the well with 22-joints, mixed up 500 liters of 1900 kg/m3 cement slurry and transferred to the tubing string.
14:30	Ran in the well with dump bailer on 73.0 mm tubing, parked bailer above bridge plug and pumped 3.0 m3 of fresh water down the tubing. Made up joint and tagged plug, opening the dump bailer, hoisted tubing string, lost 2-dAN of string weight. Pulled out of well with tubing laid out the bottom 13-joints on the ground. Stood remaining 142 joints in the tubing boards. laid out dump bailer. Cement top is at 1415.0 mKB Conducted BOP drill on way out of the well with dump bailer.
17:00	Made up One step setting tool complete with 139.7 mm 10K KAPPA bridge plug and ran in the well on 73.0 mm tubing. Parked the center element of the bridge plug at 1357.0 mKB.
19:00	Secured well for the night. Winterized and fueled up the equipment.



DAILY REPORT

CLIENT:	Strategic Oil & Gas C/O Alvarez & Marsal		DATE :	February 13, 2023	
UWI:	300/A-73 60-20N 117-30W		Report #:	5	
PROJECT MANAGER:	Christopher Gagnon		AFE #:		
PROJECT NUMBER:	STRA050	AFE Amount:	\$146,641.95	% of AFE spent:	91%
Previous Costs to Date:	\$99,737.15	Current Days Costs:	\$34,011.00	Total Cost to Date:	\$133,748.15

OPERATIONS SUMMARY: Set bridge plug, pressure tested wellbore, rotated off plug and balanced cement. Pulled and laid out tubing string. Rigged in wireline unit and completed RBL log.

SUPERVISION CHARGES

Add new line to ELM CHARGES

SERVICE PROVIDED	Number of units	UNIT	RATE	RESOURCE NAME	Site Supervisor	AMOUNT
Project Supervisor	1.00	day	\$1,200.00		Shannon Cole	\$1,200.00
Mileage (Minimum Charge)	1.00	Day	\$150.00			\$150.00
Office Trailer	1.00	Day	\$125.00			\$125.00
						\$0.00
						\$0.00
SUBTOTAL						\$1,475.00
Management Fee:						\$0.00
ELM TOTAL						\$1,475.00

THIRD PARTY CHARGES

Add new line to THIRD PARTY CHARGES

SERVICE PROVIDED	MAN HOURS	PO#	TICKET #	CONTRACTOR	SUBTOTAL	Est.	AMOUNT
Service rig	60.00		23021302ELM	Triumph Well Servicing	\$13,980.00		\$13,980.00
Boiler	14.00		106229	Miktye Trucking	\$2,970.00		\$2,970.00
Air Hand	12.00		J000047140214	Fire Master	\$990.00		\$990.00
Testers	24.00		20744	Stack Production Testing	\$4,042.00		\$4,042.00
Wireline	8.00		23-0149-10	Titanium Wireline	\$8,554.00		\$8,554.00
Vacuum Truck (Warrens location)	10.00		108999	Miktye Trucking	\$2,000.00		\$2,000.00
							\$0.00
MAN HOURS TOTAL					128.00	SUBTOTAL	\$32,536.00
						Management Fee	\$0.00
						THIRD PARTY TOTAL	\$32,536.00

To add a line in text box use "alt enter"

Time	Well Abandonments
05:45	Traveled to subject location. -20C no wind
06:30	Arrived on worksite complete LEL sweeps, completed visual wellsite inspection. Held pre-job safety meeting, reviewed safe work permits, fire and explosion. Discussed emergency response and transportation plans. Some of the topics were, installing BOP's, overhead loads, swing hazards, drilling out BP, line of fire, moving equipment on location, use spotters, icy surfaces, and trip hazards.
07:00	Recorded pressures SICP vacuum kPa; SITP - 0 kPa
07:15	Tied pump line into the tubing and filled tubing with 4.0 m3 of fresh water, pressured up the one step tool to 10.0 MPa and activated plug (plug was previously parked at 1357 mKB), pulled to 10 dAN overstring on the plug with rig, packed-off plug. Bled pressure off tubing and lowered down to neutral. Tied pump line onto the annulus and pressure tested casing and plug to 7 MPA for 15-minutes. Bled off pressure. Hoisted tubing up placing 0.5 dAN tension and rotating tubing 10-turns to the right and released from the plug. Picked tubing up 0.5 m off bottom.
10:00	Mixed up 0.5 m3 of 1900 kg/m3 cement slurry, sucked back on the annulus with pump and transferred cement from barrels into the tubing. Once all the cement was in the tubing, closed the casing valve, tied the pump line into the tubing and return line into the casing, open casing valve holding 2000 kPa back pressure, pumped 3.7 m3 of water behind cement, balanced cement plug and pulled first 10-joints slowly. Cement top 1317.0 mKB.
11:30	Laid out all 142 joints of tubing on the ground. (157 jts total)
13:00	Waited on wireliners for 6hrs. Winterized and fueled equipment while waiting on unit.
19:15	Wireline arrived on location, issued safe work permit, held pre-job safety meeting, and reviewed emergency response and transportation plans. Spotted truck and changed over from mast to rig assist. Made up and warmed up RBL logging tool. Ran in the well with high speed, fluid level is at 150 mKB ran down to plug back at 1317.0 mKB. Pulled main pass from PB to 150.0 mKB Cement top appears to be at 250 mKB. Forwarded the data to Calgary for review and analysis.
22:00	Secured well.
	SDFN



DAILY REPORT

CLIENT:	Strategic Oil & Gas C/O Alvarez & Marsal		DATE :	February 14, 2023	
UWI:	300/A-73 60-20N 117-30W		Report #:	6	
PROJECT MANAGER:	Christopher Gagnon		AFE #:		
PROJECT NUMBER:	STRA050	AFE Amount:	\$146,641.95	% of AFE spent:	122%
Previous Costs to Date:	\$133,748.15	Current Days Costs:	\$45,755.24	Total Cost to Date:	\$179,503.39
OPERATIONS SUMMARY:	Rigged out equipment, clean the rig tank and prepared to move to B-8 location.				

SUPERVISION CHARGES

[Add new line to ELM CHARGES](#)

SERVICE PROVIDED	Number of units	UNIT	RATE	RESOURCE NAME	Site Supervisor	AMOUNT
Project Supervisor	1.00	day	\$1,200.00		Shannon Cole	\$1,200.00
Mileage (Minimum Charge)	1.00	Day	\$150.00			\$150.00
Office Trailer	1.00	Day	\$125.00			\$125.00
						\$0.00
						\$0.00
SUBTOTAL						\$1,475.00
Management Fee:						\$0.00
ELM TOTAL						\$1,475.00

THIRD PARTY CHARGES

[Add new line to THIRD PARTY CHARGES](#)

SERVICE PROVIDED	MAN HOURS	PO#	TICKET #	CONTRACTOR	SUBTOTAL	Est.	AMOUNT
Service rig	60.00		23021402ELM	Triumph Well Servicing	\$13,876.00		\$13,876.00
Boiler	14.00		106230	Miktye Trucking	\$2,145.00	✓	\$2,145.00
Air Hand	12.00		J000047140214	Fire Master	\$990.00		\$990.00
Testers	24.00		20746	Stack Production Testing	\$3,050.00		\$3,050.00
Wash rooms	N/A		12595	L & P Disposals	\$1,005.00		\$1,005.00
Vacuum Truck (Warrens location)	16.00		109000	Miktye Trucking	\$3,800.00	✓	\$3,800.00
Wireline	8.00			Titanium Wireline		✓	\$0.00
Light tower	N/A		75154	Pinnacle Services	\$1,287.80		\$1,287.80
Plug and mud motors	N/A		46538	Calibre Energy	\$8,100.00		\$8,100.00
Tryton tools	N/A		CS0056184	Tryton Tools	\$6,798.94		\$6,798.94
Boiler			106233	Miktye Trucking	\$2,227.50		\$2,227.50
Vacuum Truck (Warrens location)			110203	Miktye Trucking	\$1,000.00		\$1,000.00
MAN HOURS TOTAL 134.00					SUBTOTAL		\$44,280.24
					Management Fee		\$0.00
					THIRD PARTY TOTAL		\$44,280.24

To add a line in text box use "alt enter"

Time	Well Abandonments
08:00	Traveled to subject location. -25C no wind
08:30	Arrived on worksite complete LEL sweeps, completed visual wellsite inspection. Held pre-job safety meeting, reviewed safe work permits, fire and explosion. Discussed emergency response and transportation plans. Some of the topics were, installing BOP's, overhead loads, swing hazards, drilling out BP, line of fire, moving equipment on location, use spotters, icy surfaces, and trip hazards. Recorded pressures SICP vacuum kPa; SITP - 0 kPa.
09:00	Rigged out the work floor, stripped off class III BOPs and installed top section. Laid over double service rig and rigged out support equipment. Rigged out the testers, boiler, light tower and flameless heater.
19:00	Waited on water truck and vacuum truck to finish up with cement job on another location.
17:30	Moved in water truck to suck out 4.5 m3 from the rig tank and utilized the vacuum truck to clean out the rig tank solids (3 m3 +)
18:00	Started rig move to move service rig to B-8 Moved in wireline, held pre-job safety meeting, issued safe work permit, notice of supervision, posted emergency response plan and built hazard assessments. Spotted rigged up and completed Temp. log. Rigged out wireline and released to Camp.



DAILY REPORT

CLIENT:	Strategic Oil & Gas C/O Alvarez & Marsal	DATE :	March 4, 2023
UWI:	300/A-73 60-20N 117-30W	Report #:	7
PROJECT MANAGER:	Christopher Gagnon	AFE #:	
PROJECT NUMBER:	STRA050	AFE Amount:	\$146,641.95
Previous Costs to Date:	\$179,503.39	% of AFE spent:	123%
		Current Days Costs:	\$1,350.00
		Total Cost to Date:	\$180,853.39

OPERATIONS SUMMARY: Mob to site. Broke drive shaft on cutting truck wait on mechanic for repairs.

SUPERVISION CHARGES

Add new line to ELM CHARGES

SERVICE PROVIDED	Number of units	UNIT	RATE	RESOURCE NAME	Site Supervisor	AMOUNT
Project Supervisor	1.00	day	\$1,200.00		Scott Simpson	\$1,200.00
Mileage (Minimum Charge)	1.00	Day	\$150.00			\$150.00
						\$0.00
						\$0.00
						\$0.00
SUBTOTAL						\$1,350.00
Management Fee:						\$0.00
ELM TOTAL						\$1,350.00

THIRD PARTY CHARGES

Add new line to THIRD PARTY CHARGES

SERVICE PROVIDED	MAN HOURS	PO#	TICKET #	CONTRACTOR	SUBTOTAL	Est.	AMOUNT
							\$0.00
							\$0.00
							\$0.00
							\$0.00
							\$0.00
							\$0.00
MAN HOURS TOTAL					0.00		
SUBTOTAL							\$0.00
Management Fee							\$0.00
THIRD PARTY TOTAL							\$0.00

To add a line in text box use "alt enter"

Time	Well Abandonments
7:30	Held pre job safety meeting with Innovative crew and Sierra vac hauler. Reviewed ELM safe work permit and ERP. Stars site number 1943. Discussed working in very cold weather conditions and a long move to our next wellsite. Make sure we maintain good radio communication and have all equipment chained up.
08:00	Started move to A-73 while moving up km 47 hill cut truck drive shaft broke apart. Called and dragged truck up hill with cat and pulled it safely off the side of the road. Wait on mechanic for repairs tomorrow.
	NOTE: Drive shaft broke at the U-Joints, no fluid from transmission or differentials on ground.



DAILY REPORT

CLIENT:	Strategic Oil & Gas C/O Alvarez & Marsal	DATE :	March 5, 2023
UWI:	300/A-73 60-20N 117-30W	Report #:	8
PROJECT MANAGER:	Christopher Gagnon	AFE #:	
PROJECT NUMBER:	STRA050	AFE Amount:	\$146,641.95
Previous Costs to Date:	\$180,853.39	Current Days Costs:	\$6,850.00
		% of AFE spent:	128%
		Total Cost to Date:	\$187,703.39

OPERATIONS SUMMARY: Finish mob to site after repairs. No bubbles on surface vent conduct cut and cap could not pull wellhead free.

SUPERVISION CHARGES

Add new line to ELM CHARGES

SERVICE PROVIDED	Number of units	UNIT	RATE	RESOURCE NAME	Site Supervisor	AMOUNT
Project Supervisor	1.00	day	\$1,200.00		Scott Simpson	\$1,200.00
Mileage (Minimum Charge)	1.00	Day	\$150.00			\$150.00
						\$0.00
						\$0.00
						\$0.00
SUBTOTAL						\$1,350.00
Management Fee:						\$0.00
ELM TOTAL						\$1,350.00

THIRD PARTY CHARGES

Add new line to THIRD PARTY CHARGES

SERVICE PROVIDED	MAN HOURS	PO#	TICKET #	CONTRACTOR	SUBTOTAL	Est.	AMOUNT
Jet cutter				Innovative	\$4,000.00	✓	\$4,000.00
Hydro vac				Innovative	\$1,500.00	✓	\$1,500.00
							\$0.00
							\$0.00
							\$0.00
							\$0.00
MAN HOURS TOTAL					0.00		
SUBTOTAL							\$5,500.00
Management Fee							\$0.00
THIRD PARTY TOTAL							\$5,500.00

To add a line in text box use "alt enter"

Time	Well Abandonments
14:30	Held pre job safety meeting with Innovative cut and cap crew and Sierra vac driver. Reviewed ELM safe work permit and ERP. Stars site 4319. Discussed daily operations and hazards. Working in extreme cold and travelling in convoy on radio controlled roads. Take your time travelling always maintain radio contact.
15:30	Sweep location for LELs. Installed bubble tester into surface vent monitored for 10 minutes no bubbles on vent. Confirmed coordinates for A-73 60.2027,-117.7256.
16:00	Proceed to cutting wellhead removed top section of wellhead. Built and installed cutting tool into wellhead. Daylighted around wellhead confirmed there was a 16 inch and a 20 inch conductor barrel 1.1 meters below existing ground level. Set jet pressure made one full rotation with cutter.
17:00	Pulled up and tried to removed wellhead and conductor barrel it would not pull free rig back in cutters cut again. Second cut still could not get wellhead and conductor barrels to free up.
19:00	SDFN



DAILY REPORT

CLIENT:	Strategic Oil & Gas C/O Alvarez & Marsal	DATE :	March 6, 2023
UWI:	300/A-73 60-20N 117-30W	Report #:	9
PROJECT MANAGER:	Christopher Gagnon	AFE #:	
PROJECT NUMBER:	STRA050	AFE Amount:	\$146,641.95
Previous Costs to Date:	\$187,703.39	Current Days Costs:	\$7,480.40
		% of AFE spent:	133%
		Total Cost to Date:	\$195,183.79

OPERATIONS SUMMARY: Dig down beside wellhead to break wellhead free. Well cut off 2.1 meters below existing ground level. Cemented wellsite sign 1 meter in ground.

SUPERVISION CHARGES

Add new line to ELM CHARGES

SERVICE PROVIDED	Number of units	UNIT	RATE	RESOURCE NAME	Site Supervisor	AMOUNT
Project Supervisor	1.00	day	\$1,200.00		Scott Simpson	\$1,200.00
Mileage (Minimum Charge)	1.00	Day	\$150.00			\$150.00
						\$0.00
						\$0.00
						\$0.00
SUBTOTAL						\$1,350.00
Management Fee:						\$0.00
ELM TOTAL						\$1,350.00

THIRD PARTY CHARGES

Add new line to THIRD PARTY CHARGES

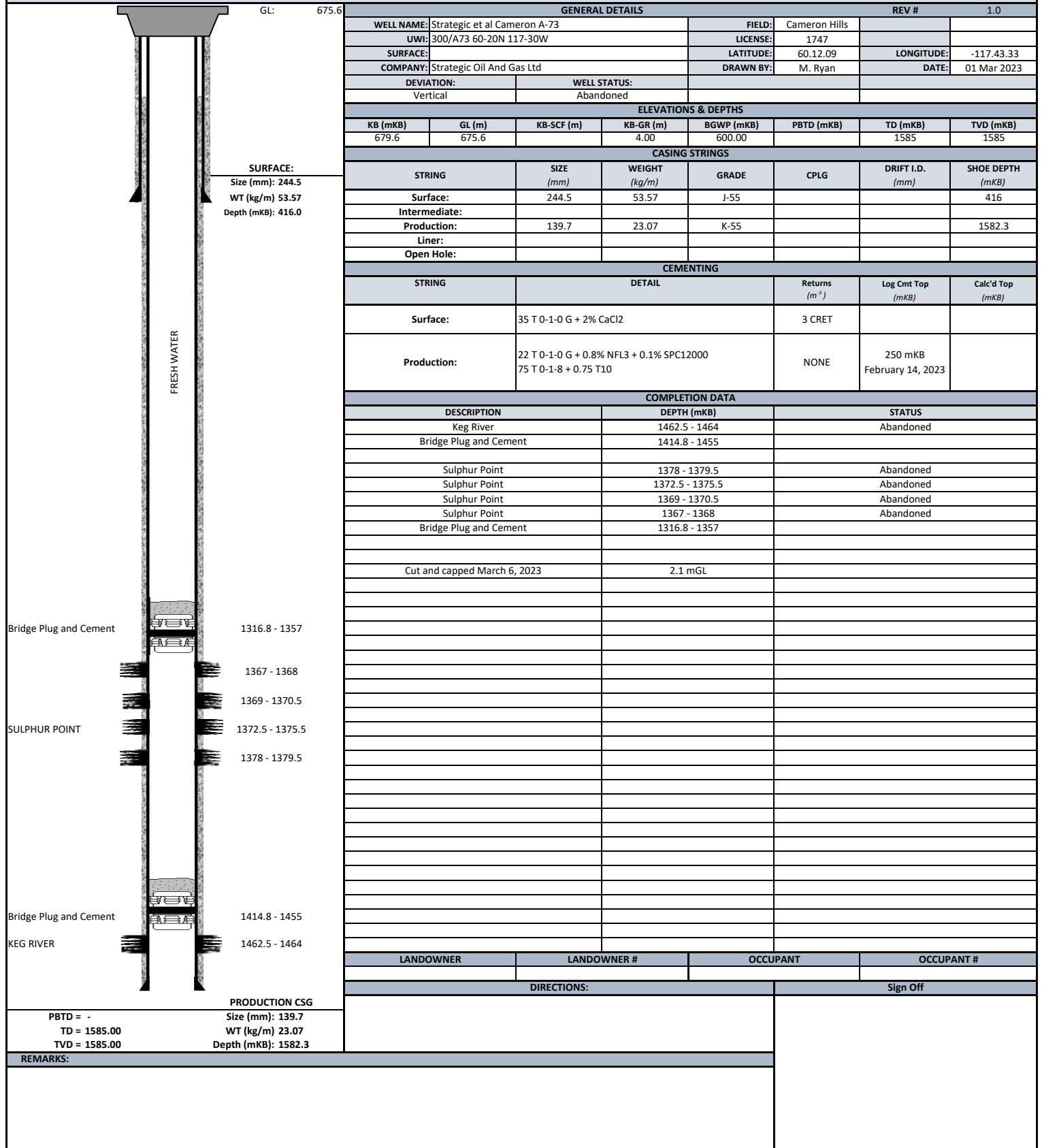
SERVICE PROVIDED	MAN HOURS	PO#	TICKET #	CONTRACTOR	SUBTOTAL	Est.	AMOUNT
Fuel for equipment (light towers and heaters)			100025	Bluewave	\$5,026.77		\$5,026.77
Damaged mud motor replacement parts			46538A	Caliber	\$1,103.63		\$1,103.63
							\$0.00
							\$0.00
							\$0.00
							\$0.00
MAN HOURS TOTAL					0.00		
SUBTOTAL							\$6,130.40
Management Fee							\$0.00
THIRD PARTY TOTAL							\$6,130.40

To add a line in text box use "alt enter"

Time	Well Abandonments
7:30	Held pre job safety meeting with Innovative cut and cap crew and Sierra vac driver. Reviewed ELM safe work permit and ERP. Discussed daily operations and hazards. Working in extreme cold -38C on location. Take necessary breaks. Lots of uneven lease conditions watch your footing always plan escape route.
08:00	Had problems getting back hoe started up. Got backhoe running continued to try and work wellhead free. Dug down beside wellhead continued jarring on it. Wellhead finally pulled free. Pulled out wellhead and 14,20 inch conductor barrels. Measured and confirmed wellhead was cut 2.1 meters below existing ground level. Installed the vented cap, wellhead sign 1 meter north sign facing north of wellhead and cemented sign post 1 meter in the ground. Loaded all old wellhead components. Prepared to move.
12:30	Moved equipment to G-21 All cutting charges will be on A-73 March 5 2023 daily.



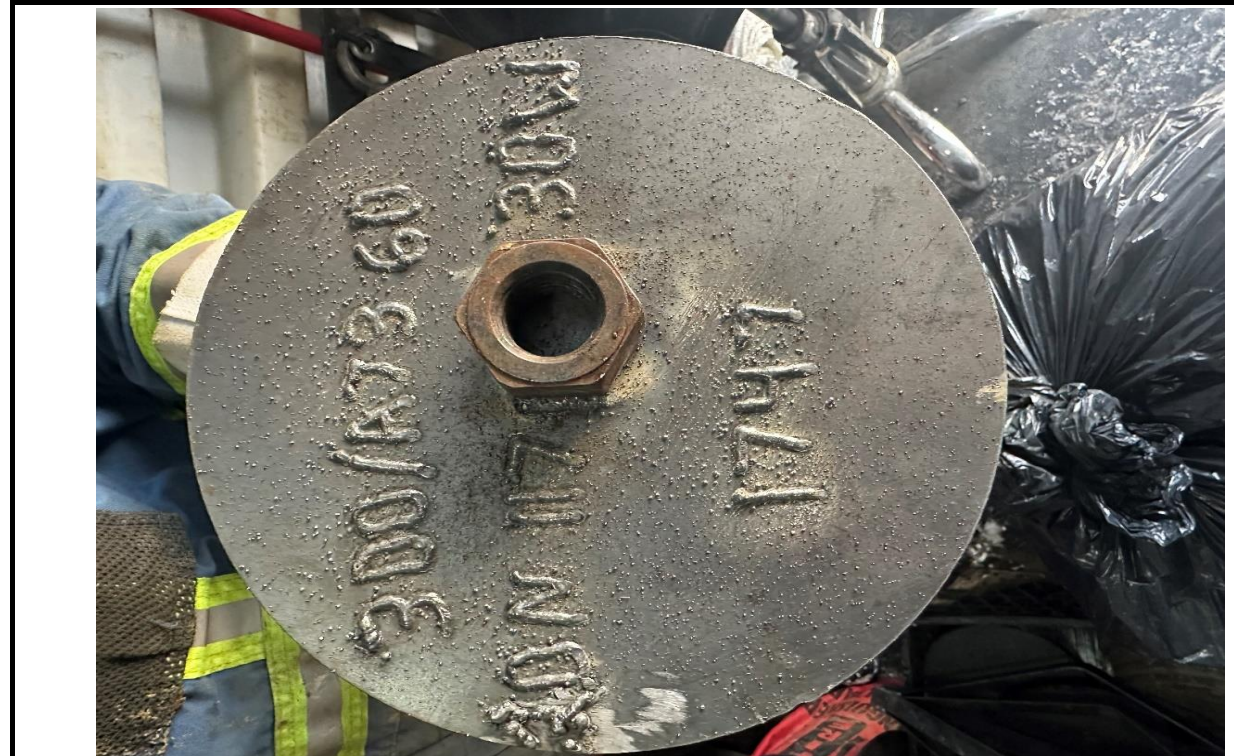
FINAL WELL DIAGRAM



CAMERON A-73



A-73 Wellhead



Vented cap



Sign placed on north side of the wellhead and facing north

Insert Comment