



## Well Operations Report

<b>Well Name:</b>	<b>S.W. ARROWHEAD M-35</b>
<b>UWI:</b>	<b>300/M-35-60.30-123.00/00</b>
<b>License #:</b>	<b>WID1989 (004036)</b>
<b>Field:</b>	<b>FT LIARD (5501)</b>
<b>Profile:</b>	<b>Vertical</b>
<b>Zone:</b>	<b>Chinkeh</b>
<b>Class:</b>	<b>Level II</b>

CNRL has performed the well abandonment operations within the last 30 days for this well as outlined in the approved program. Included in this document are the daily reports, and a wellbore schematic of the current state of the well. Additional documentation will follow in the summer once a gas migration test is complete with a change of well status form, and pictures of the cut and capped wellbore.

Please advise if any additional information is required

Thank you,

Canadian Natural Resources Limited

A handwritten signature in black ink, appearing to read "Terran Bernhard", written in a cursive style.

Terran Bernhard, P.Eng.

Abandonment Engineer

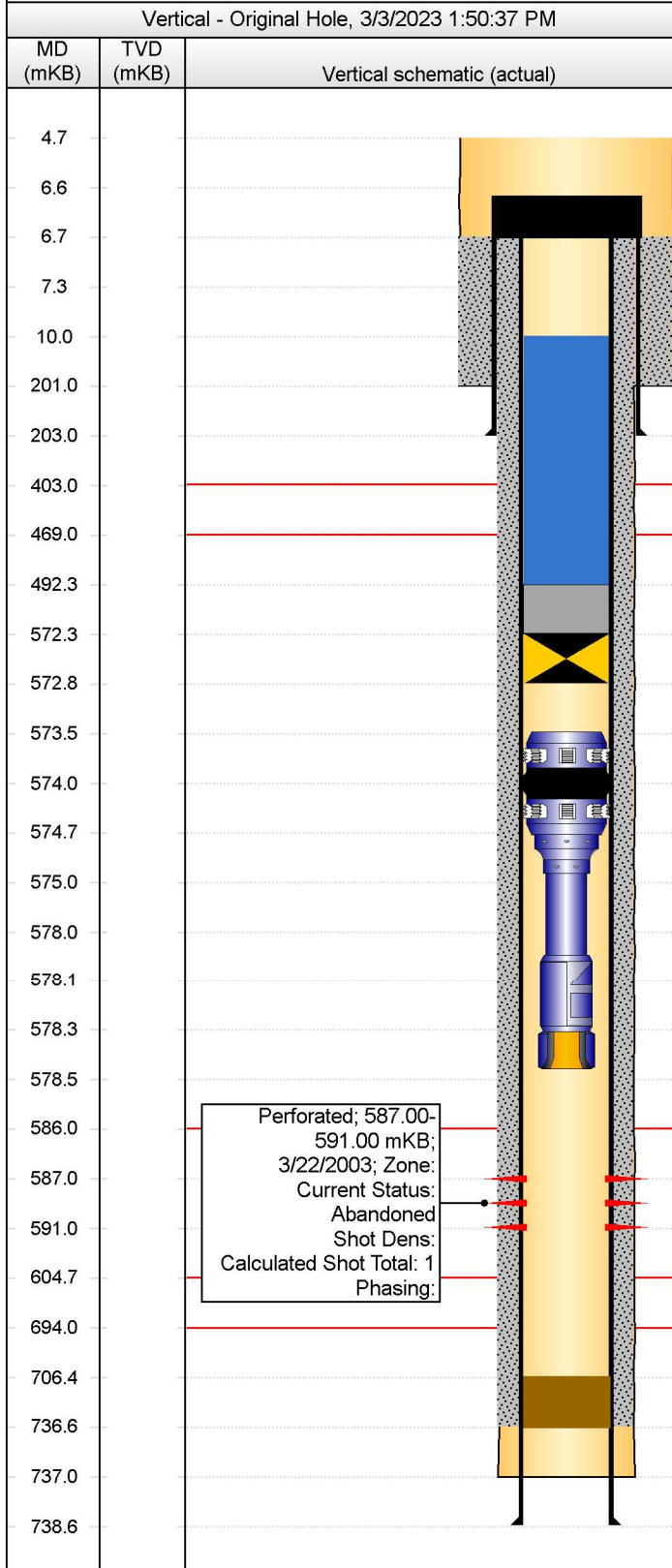
**Canadian Natural Resources Limited**

Suite 2100, 855 - 2 Street SW, Calgary, Alberta, T2P 4J8 T 403.517.6700 F 403.514.7677 [www.cnrl.com](http://www.cnrl.com)

# Downhole Schematic (Gov't Submission)

## ANADARKO S.W. ARROWHEAD M-35

Current Event (UWI) 300/M-35-60.30-123.00/00		Surface Legal Location		License # NT001989		Field Name FT LIARD			Province N.W.T						
Well Profile Vertical		Fluid Type Conv Gas		Original KB Elevation (m) 351.00		KB-Ground Distance (m) 4.70		KB-Casing Flange Distance (m)		KB-Tubing Head Distance (m)					
Latitude (°)		Longitude (°)		Orig Spud Date 3/3/2003		Orig RR Date 3/8/2003		C&C Date 2/10/2023		GW Protected? Yes		BGWP (mKB) 604.70		Oilsand Area No	
Directions To Well Refer to survey, maps.													H2S Classification Sweet		

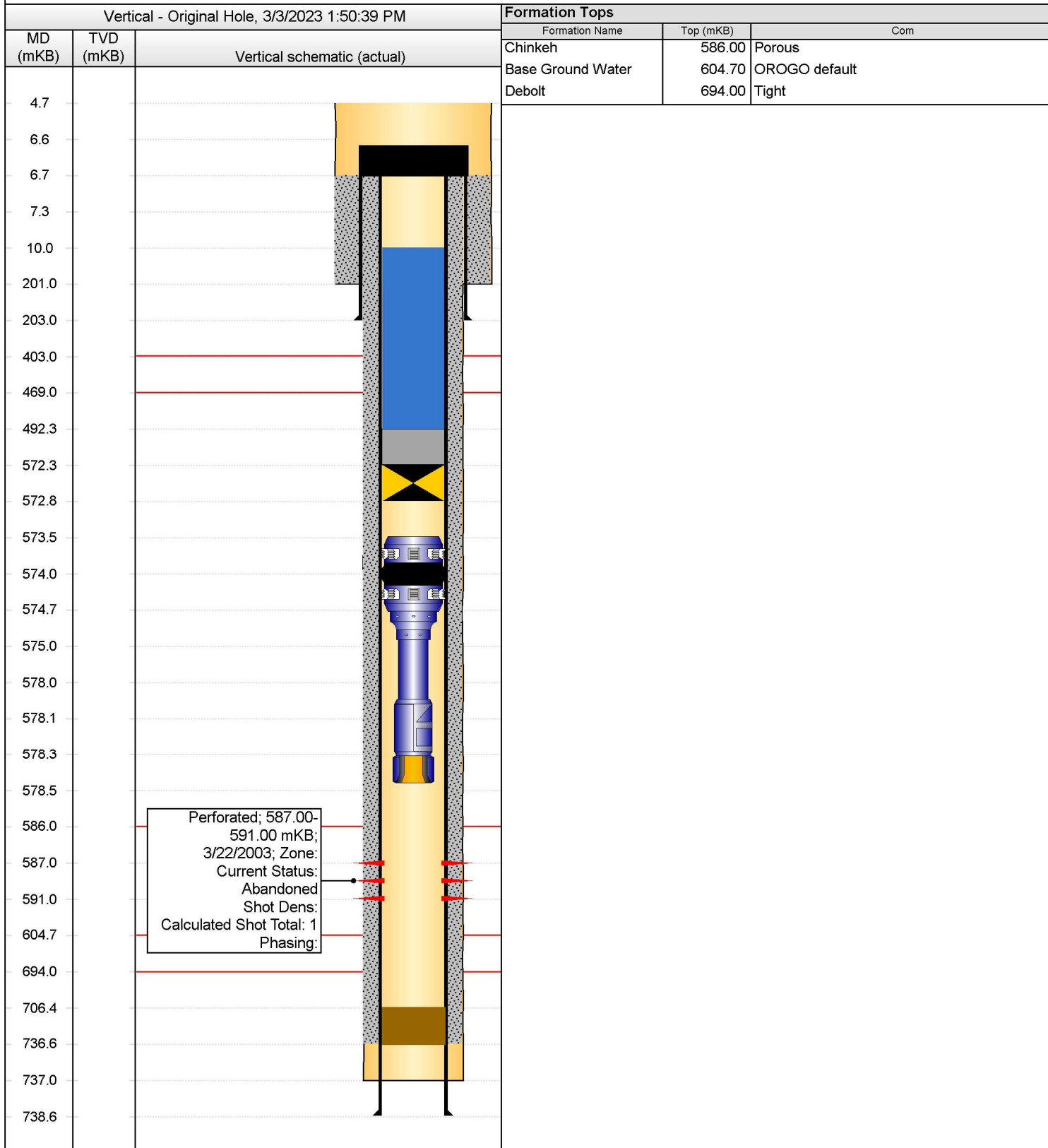


SCVF & GM Tests (Last 2 Records)							
Test Date		Test Type			Failed?		
2/5/2023		Gas Migration			No		
2/5/2023		SCVF			No		
Openhole Information							
Section Des		Size (mm)	Top (mKB)		Bottom (mKB)		
Surface		311.2	4.70		201.00		
Main 1		200.0	201.00		737.00		
Casing Strings							
Csg Des		OD (mm)	Wt/Len (kg/m)	Grade	Top (mKB)	Set Depth (MD) (mKB)	
Surface		219.1	35.716	J-55	6.70	203.00	
Production		139.7	20.834	J-55	6.70	738.60	
Cement Stages							
Description		Cementing Start Date	Top Depth (mKB)	Btm (mKB)	Vol Cement Re...		
Surface Cement			6.70	201.00	1.50		
Comment							
14.6 tonnes (11.3m3) G + 3.0% CaCl2, 1.5m3 cement returns							
Description		Cementing Start Date	Top Depth (mKB)	Btm (mKB)	Vol Cement Re...		
Production Cement			6.70	736.60	1.00		
Comment							
20.0 tonnes Thixmix II + 0.3% CFL-3 + 1.0% CaCl2, 1.0m3 cement returns							
Description		Cementing Start Date	Top Depth (mKB)	Btm (mKB)	Vol Cement Re...		
Thermal Cement Plug		2/6/2023	492.30	572.30			
Comment							
Circulated 1m3 (80 Lineal Meters) Thermal 40 Cement On Bridge Plug							
Perforations							
Zone		Top (mKB)	Btm (mKB)	Current Status			
		587.00	591.00	Abandoned			
Tubing Strings							
Tubing - Production set at 578.46mKB on 3/21/2003 00:00							
Tubing Description			String Max N...	Wt (kg/m)	String Grade		
Tubing - Production			60.3	6.994	J-55		
Comment							
Packer pressure tested to 18 MPa - 3/23/2003.							
No mention of tubing plug or slip stop installed on last daily report. Inspection dated Aug. 13, 2010, SICP - 555 kPa and SITP 26 kPa.							
Tubing Components							
Item #	Jts	Item Des	OD (mm)	ID (mm)	Len (m)	Top (mKB)	Btm (mKB)
1-1	1	Howco PLS Packer	119.0	62.0	1.23	573.48	574.71
1-2	1	Cross Over 73 x 60.3mm	93.0	50.7	0.24	574.71	574.95
1-3	1	Tubing	60.3	50.7	3.10	574.95	578.05
1-4	1	R Nipple 46 x 44.7mm No-Go	76.6	44.7	0.26	578.05	578.31
1-5	1	Wireline Guide	82.2	50.7	0.15	578.31	578.46
Other In Hole							
Des		Run Date	Pull Date	Top (mKB)	Btm (mKB)		
BPV (for visual)		6/10/2003	2/1/2023	4.40	4.60		
Diesel			2/5/2023	4.70	7.30		
Steel plate welded to centralizer		2/10/2023		6.62	6.70		
3% KCl Water			2/5/2023	7.30	574.00		
Fresh Water		2/5/2023		10.00	492.30		
Thermal Cement Plug		2/6/2023		492.30	572.30		
HM2 10k Permanent Bridge Plug		2/5/2023		572.30	572.80		
Plug Back		3/22/2003		706.40	736.60		
Formation Tops							
Formation Name		Top (mKB)	Com				
Scatter		403.00	Porous				
Garbutt		469.00	Tight				

# Downhole Schematic (Gov't Submission)

## ANADARKO S.W. ARROWHEAD M-35

Current Event (UWI) 300/M-35-60.30-123.00/00	Surface Legal Location	License # NT001989	Field Name FT LIARD	Province N.W.T
Well Profile Vertical	Fluid Type Conv Gas	Original KB Elevation (m) 351.00	KB-Ground Distance (m) 4.70	KB-Casing Flange Distance (m)
KB-Tubing Head Distance (m)				





Daily Service Report (Gov't Submissions)

ANADARKO S.W. ARROWHEAD M-35

Job: Abandonment  
Report #: 1.0  
1/23/2023 07:12 to

Current Event (UWI) 300/M-35-60.30-123.00/00		Surface Legal Location		License # NT001989		Field Name FT LIARD		Province N.W.T	
WI (%) 100.00	Objective							Plug Back Depth (mKB)	
Job Start Date 2/1/2023	Ground Elevation (m) 346.30	Tubing Head Elevation (m)	KB-TH (m)		Casing Pressure (kPa)		Tubing Pressure (kPa)		Set Depth (MD) (mKB)
Job End Date 2/10/2023	Original KB Elevation (m) 351.00	Casing Flange Elevation (m)		KB-Casing Flange Distance (m)		Road Condition		Weather	Temperature (°C)

Daily Activities								
Morning Ops @ 7am								

Daily Operations Summary								
--------------------------	--	--	--	--	--	--	--	--

Time Log								
Start Time	Dur (hr)	Com						

Perforations Summary			

Daily Fluids Summary				Operational Supervisors	
Fluid	To well (m³)	From well (m³)	Left to recover (m³)	Contact	Title
				Contractor	Rig Number
				Rig Manager	



Daily Service Report (Gov't Submissions)  
ANADARKO S.W. ARROWHEAD M-35

Job: Abandonment  
Report #: 2.0  
2/1/2023 09:30 to 2/1/2023 12:30

Current Event (UWI) 300/M-35-60.30-123.00/00		Surface Legal Location		License # NT001989	Field Name FT LIARD		Province N.W.T	
WI (%) 100.00	Objective						Plug Back Depth (mKB)	
Job Start Date 2/1/2023	Ground Elevation (m) 346.30	Tubing Head Elevation (m)	KB-TH (m)		Casing Pressure (kPa)	Tubing Pressure (kPa) 5,000	Set Depth (MD) (mKB)	
Job End Date 2/10/2023	Original KB Elevation (m) 351.00	Casing Flange Elevation (m)	KB-Casing Flange Distance (m)	Road Condition Good	Weather Clear	Temperature (°C) -34		

Daily Activities							
Morning Ops @ 7am							
SR: MIRU SR & Equip							
Daily Operations Summary							
Travelled to above Location with Streamflo Hold Pre-Jsm							
Time Log							
Start Time	Dur (hr)	Com					
09:30	0.75	Travel from camp to location. Move in Stream Flo,					
10:15	0.50	Conduct Pre-JSM with Services, Reviewed CNRL'S Workplace Harassment and Voilence Prevention Policy Plan CNRL-OVR-POL-HR-000018 Review Hazard Assessment,TIWP and Fire & Explosion,4-Pillars of safety,Ensure personal have CNRL CSO Orientation and are fit for duty,Review Jsa's and sign off on services Hazard Assessment,Review Abandonment program and job scope, Proper PPE Line of fire, slips and trips pinch points,swing path,Crush Zones overhead loads,Reveiwed hazards of spotting equipment and pulling BPV. backing up using spotters,					
10:45	1.00	Moved in and spotted Stream flo unit. Check for hazards around wellhead. Bmonitor throughout job. SITP 5000 KpaDW. Make up 73mm Lubricator & screw into BPV. Screw out BPV from Tubing hanger & Lubricate out 73mm back pressure valve from tbg hanger Shut in & secure well. Rig out Stream Flo crew					
11:45	0.75	Travel Back to base Camp East Liard.					

Perforations Summary					
Date	Zone	Top (mKB)	Btm (mKB)	Type	Com
3/22/2003 00:00		587.00	591.00	Perforated	

Daily Fluids Summary				Operational Supervisors	
Fluid	To well (m³)	From well (m³)	Left to recover (m³)	Contact	Title
				Jeffrey Willick	Abandonment Ops Mgr.
				Dale Duffy	Superintendent
				Mike Loveless	Well Site Supervisor
				Contractor streamflo	Rig Number Z-223
				Rig Manager Tim Rice	



Daily Service Report (Gov't Submissions)  
ANADARKO S.W. ARROWHEAD M-35

Job: Abandonment  
Report #: 3.0  
2/4/2023 11:30 to 2/4/2023 18:00

Current Event (UWI) 300/M-35-60.30-123.00/00		Surface Legal Location		License # NT001989	Field Name FT LIARD		Province N.W.T	
WI (%) 100.00	Objective						Plug Back Depth (mKB)	
Job Start Date 2/1/2023	Ground Elevation (m) 346.30	Tubing Head Elevation (m)	KB-TH (m)		Casing Pressure (kPa) 80	Tubing Pressure (kPa) 5,000	Set Depth (MD) (mKB)	
Job End Date 2/10/2023	Original KB Elevation (m) 351.00	Casing Flange Elevation (m)		KB-Casing Flange Distance (m)	Road Condition Good	Weather Clear	Temperature (°C) -18	

Daily Activities							
Morning Ops @ 7am							
SR: ND Wellhead, NU BOPs							
Daily Operations Summary							
Move in rig and equipment from C-07 Pad. Spotted doghouse, shacks, 400 bbl tank, and boiler. Spot rig matting and spot PD 829 service rig to well on jacks, Rig in pump, tank and lines. Unloaded 25 m3 fresh water in 400 bbl tank. Stand mast and RUSR. Apply Heat to 400bbl And Wellhead.							
Time Log							
Start Time	Dur (hr)	Com					
11:30	2.50	11:30 - 14:00 Hrs - Move rig and equipment from C-07 Pad, spot equipment at lease entrance, complete lease walk around and check for hazards (Good). Talley from well center and move in 1 piece of equipment at a time. Spot doghouse and WSS shack, move in and spot pump / tank and 400 bbl,					
14:00	3.50	14:00 - 17:30 Hrs - Pack up qualified worker, check well pressures ( 5000 kpa tbg - 80 kap csg) No signs of H2S. Spot rig matting with picker. Rig in pump & tank + lines, boiler and boiler lines. Back in and spot rig 829 on jacks. Complete level 1 visual inspection on mast raising components, stand and scope mast. Unload 25m3 fresh water in 400 bbl with tanker. Ensure equipment is rigged in following OROGO, CNRL, OHS and company policies and regulations.					
17:30	0.50	17:30 - 18:00 Hrs - Plug in and winterize equipment, ensure that steam coils are hooked to 400 bbl, apply heat to tank and wellhead. Clean up tools. SDFN.					

Perforations Summary					
Date	Zone	Top (mKB)	Btm (mKB)	Type	Com
3/22/2003 00:00		587.00	591.00	Perforated	

Daily Fluids Summary				Operational Supervisors	
Fluid	To well (m³)	From well (m³)	Left to recover (m³)	Contact	Title
Fresh Water				Jeffrey Willick	Abandonment Ops Mgr.
				Dale Duffy	Superintendent
				Mike Hamer	Wellsite Supervisor
				Contractor Precision Well Servicing	Rig Number 829
				Rig Manager Anthony Klimm	



Daily Service Report (Gov't Submissions)  
ANADARKO S.W. ARROWHEAD M-35

Job: Abandonment  
Report #: 4.0  
2/5/2023 07:00 to 2/5/2023 17:30

Current Event (UWI) 300/M-35-60.30-123.00/00		Surface Legal Location		License # NT001989	Field Name FT LIARD		Province N.W.T	
WI (%) 100.00	Objective						Plug Back Depth (mKB)	
Job Start Date 2/1/2023	Ground Elevation (m) 346.30	Tubing Head Elevation (m)	KB-TH (m)		Casing Pressure (kPa) 80	Tubing Pressure (kPa) 5,000	Set Depth (MD) (mKB)	
Job End Date 2/10/2023	Original KB Elevation (m) 351.00	Casing Flange Elevation (m)	KB-Casing Flange Distance (m)	Road Condition Snow Covered	Weather Snowing	Temperature (°C) -24		

Daily Activities		
Morning Ops @ 7am		
SR: Spot Cement Cap On Bridge Plug		
Daily Operations Summary		
Check Wellhead Pressures (5000 kpa tbg - 80 kpa csg), PT Packer And Casing To 7 Mpa (Good), Attempted To Bleed Off Tubing (No Success), Filled And Squeezed Fresh Water Down Tubing To Kill (Multiple Attempts Before Success), ND Wellhead, NU BOPs, PT BOP Components, Release On/Off And Pull Tubing Hanger, Circulate To Fresh, Complete GM And SCVF Testing, POOH Production Tubing And On/Off. RIH 139.7 mm PBP, Set With CE @ 572.50 mkb (Top @ 572.30 mkb), PT To 7 Mpa For 10 Mins. Good Test, Pull Up 0.50 m. Secure Well.		
Time Log		
Start Time	Dur (hr)	Com
07:00	0.50	07:00 - 07:30 Hrs - Complete a detailed Safety MTG with PWS (Service Rig Crew). Review CNRL, PWS Safety Policy's & Procedures, Review Transportation of injured worker Plan. Fire & Explosion Plan, Medic Locations, Ensure OROGO, OHS, CNRL, Policies are followed. Review CNRL 4-Pillars/KPI's, Review site specific Job details/JSA's, Detailed discussion on using proper tools for the job and proper hand placement in different situations. Sweep lease and wellhead area for LELs and H2S, lease clear.
07:30	3.00	07:30 - 10:30 Hrs - Check pressures on well. (5000 kpa tbg - 80 kpa csg). No H2S present. Tie pump line onto casing, PT packer and casing to 7 Mpa (Good Test), Bleed back and tie in to tubing. Attempted to bleed back pressure to rig tank, could not bleed off. Pumped 1.2m3 to fill, pressured up to 7 Mpa, bumped up to 10 Mpa and slowly squeeze fluid away allowing pressure to bleed down to 7 Mpa, Attempted 4 times killing well, well continued to push back kill fluid with each attempt, On final attempt well stayed dead long enough to remove wellhead and install pup joint complete with stabbing valve. Shut in valve.
10:30	1.00	10:30 - 11:30 Hrs - Tie pump line into test stump and pressure test blind rams (1.4 Mpa low - 14 Mpa High), tests good 10 mins each. Pickup and strip on BOPs and annular. Tighten and secure BOPs to wellhead. Tie into working spool, pressure test pipe rams for 10 mins (1.4 Mpa low - 14 Mpa high). Pressure test annular for 10 mins (1.4 Mpa low - 7 Mpa high). Rig out pump line.
11:30	1.00	11:30 - 12:30 Hrs - Rig in working floor, handrails, tongs and pipe handling equipment. Complete function tests on all BOP components. Function test ram saver, crown saver, air horn e-kills and all safety devices (Good). Prep to release On/Off.
12:30	1.00	12:30 - 13:30 Hrs - Remove leg screws, pull up on tubing hanger and release from On/Off. Tie in pumping equipment. Forward circulate well to fresh water with 10 m3 returning to rig tank. Break out pump lines and winterize. Complete GM testing as per CNRL regulations/procedure (Good), perform 10 min bubble test on SCV, No Bubbles.
13:30	1.50	13:30 - 15:00 Hrs - String out and rig in escape line and anchor. POOH standing production tubing as follows, 1X73 mm tubing, 1X73 mm 10 ft pup, 59X73 mm tubing (60 total joints), lay out 10 foot and Howco On/Off to ground. Clean up and change over equipment to RIH.
15:00	2.00	15:00 - 17:00 Hrs - Hold PJSM with Dans Oilfield. MU and RIH with HM2 10K permanent bridge plug, 60 tubing, 10,8 ft pups. Pick casing collar @ 569 mkb, meter in and land BP with CE @ 572.50 mkb. Top @ 572.30 mkb, Bottom @ 572.80 mkb. Tie in pumping equipment and line, fill tubing and pressure up to 10,500 Kpa to set plug. Tie into casing, fill with 1.8 m3 fresh water and pressure test BP to 7000 kpa for 10 mins (start 7222 kpa - finish 7146 kpa). Good Test. Bleed off pressure, Drop ball and disconnect. Pull up 0.50 m above plug.
17:00	0.50	17:00 - 17:30 Hrs - Shut, cap and secure well, clean up tools and work area. Plug in and Winterize equipment. SDFN.

Perforations Summary

Date	Zone	Top (mKB)	Btm (mKB)	Type	Com
3/22/2003 00:00		587.00	591.00	Perforated	

Daily Fluids Summary

Fluid	To well (m³)	From well (m³)	Left to recover (m³)
Fresh Water	18.00	0.00	18.00
Other			

Operational Supervisors

Contact	Title
Jeffrey Willick	Abandonment Ops Mgr.
Dale Duffy	Superintendent
Mike Hamer	Wellsite Supervisor
Contractor Precision Well Servicing	Rig Number 829
Rig Manager Anthony Klimm	





Daily Service Report (Gov't Submissions)  
ANADARKO S.W. ARROWHEAD M-35

Job: Abandonment  
Report #: 5.0  
2/6/2023 07:00 to 2/6/2023 15:30

Current Event (UWI) 300/M-35-60.30-123.00/00		Surface Legal Location		License # NT001989	Field Name FT LIARD		Province N.W.T	
WI (%) 100.00	Objective						Plug Back Depth (mKB)	
Job Start Date 2/1/2023	Ground Elevation (m) 346.30	Tubing Head Elevation (m)	KB-TH (m)		Casing Pressure (kPa) 0	Tubing Pressure (kPa) 0	Set Depth (MD) (mKB)	
Job End Date 2/10/2023	Original KB Elevation (m) 351.00	Casing Flange Elevation (m)		KB-Casing Flange Distance (m)	Road Condition Snow Covered	Weather Clear	Temperature (°C) -22	

Daily Activities		
Morning Ops @ 7am C&C: Well Ready To Cut And Cap		
Daily Operations Summary MIRU C&A Unit. Pre-Flush 1m3 Fresh Water, Pressure Test Surface Equipment to 14 Mpa, Batch Mix And Pump 1m3 Thermal 40 Blend @1800 kg/m3. Circulated To Bottom With 1.2 m3 Fresh Water To Balance. (80 Lineal meters) TOC = 492.30 mkb, Pulled 10 Joints And Backwash Tubing With 1.5XTubing Volume. POOH 60X73mm Tubing To Ground, ND BOPs, NU Wellhead, ROSR And Equipment. Move And Spot Equipment @ Km Marker #1 South.		
Time Log		
Start Time	Dur (hr)	Com
07:00	0.50	07:00 - 07:30 Hrs - Complete a detailed Safety MTG with PWS (Service Rig Crew). Review CNRL, PWS Safety Policy's & Procedures, Review Transportation of injured worker Plan. Fire & Explosion Plan, Medic Locations, Ensure OROGO, OHS, CNRL, Policies are followed. Review CNRL 4-Pillars/KPI's, Review site specific Job details/JSA's, Detailed discussion on working in the cold and laying tubing out on the ground. Sweep lease and wellhead area for LELs and H2S, lease clear.
07:30	0.50	07:30 - 08:00 Hrs - Check pressures on well. (0 kpa tbg - 0 kpa csg) No signs of H2S, Function test ram saver, crown saver, air horn, e-kills and all safety equipment. Heat up wellhead and pump lines. Prep equipment for cement job.
08:00	1.50	08:00 - 09:30 Hrs - Hold PJSM with Charger Cementers. Rig in C&A Unit, bulker and pump lines, batch mix 1m3 Thermal 40 Blend @ 1800 kg/m3, preflush with 1m3 fresh water, returns to surface, pressure test surface lines to 14 Mpa, pump 1m3 thermal cement and displace plug with 1.2 m3 fresh water to balance. Rig out cementers. TOC is @ 492.30 mkb , pull and lay out 10 tubing to catwalk. Tie in rig pump and line, backwash tubing with 3 m3 fresh water. Rig out pump lines and winterize. Rig out C&A unit and vac truck.
09:30	1.00	09:30 - 10:30 Hrs - POOH to ground with 60X73 mm tubing. Top filled hole with 10 joints remaining in hole.
10:30	4.00	10:30 - 14:30 Hrs - Back in and spot junk truck. Rig out stairs, handrails and working floor. Rig out all pipe handling equipment. Remove rig BOPs, annular and secure on junk truck, winterize and install wellhead c/w chain and lock. Rig out pump, tank, boiler and all lines, Remove accumulator lines and rig power cord. Complete level 1 inspection of mast lowering components, scope down top section and lay over mast. Take rig off jacks and move to side of location. Prep to move equipment to camp.  ***Changed Oil In Tongs, Complete Oil Change OnRig Pump And Complete Maintenance***
14:30	1.00	14:30 - 15:30 Hrs - Move all equipment and spot @ KM 1 (Paramount Lease). Fuel up generator and plug in and winterize all equipment. SDFN.

Perforations Summary					
Date	Zone	Top (mKB)	Btm (mKB)	Type	Com
3/22/2003 00:00		587.00	591.00	Perforated	

Daily Fluids Summary				Operational Supervisors	
Fluid	To well (m³)	From well (m³)	Left to recover (m³)	Contact	Title
Fresh Water	0.00	0.00	18.00	Jeffrey Willick	Abandonment Ops Mgr.
Other	0.00	0.00		Dale Duffy	Superintendent
				Mike Hamer	Wellsite Supervisor
				Contractor Precision Well Servicing	Rig Number 829
				Rig Manager Anthony Klimm	





Daily Service Report (Gov't Submissions)  
ANADARKO S.W. ARROWHEAD M-35

Job: Abandonment  
Report #: 6.0  
2/10/2023 07:00 to 2/10/2023 12:30

Current Event (UWI) 300/M-35-60.30-123.00/00		Surface Legal Location		License # NT001989	Field Name FT LIARD		Province N.W.T	
WI (%) 100.00	Objective						Plug Back Depth (mKB)	
Job Start Date 2/1/2023	Ground Elevation (m) 346.30	Tubing Head Elevation (m)	KB-TH (m)		Casing Pressure (kPa) 0	Tubing Pressure (kPa)	Set Depth (MD) (mKB)	
Job End Date 2/10/2023	Original KB Elevation (m) 351.00	Casing Flange Elevation (m)		KB-Casing Flange Distance (m)	Road Condition Rough	Weather Clear	Temperature (°C) -17	

Daily Activities		
Morning Ops @ 7am		
RR: Ready for Reclamation		
Daily Operations Summary		
Conduct SCV/ GM test, both good. Dig up 2.5 M around well. Welder cut off wellhead. Weld vented plate between Surface & Production Casings. Weld on vented cap with ID #1989. Push in 5 M 73mm Jnt 1 M North of well centre. Back-fill hole with clean dirt. Make up sign with ID #, Company name, Date of Cut & Cap, Coordinates with NAD 83. Production casing cut 2 M below original ground level, Lease is ready for reclamation.		
Time Log		
Start Time	Dur (hr)	Com
07:00	0.50	Checked with GM tester no ppm's. Conduct Gas Migration test; Take 4 readings at 90° around casing, at a 2 meter radius and at a 6 m radius around well as per CNRL SCVF & GM Testing - Operational Procedures (July 2011). Recorded 0 ppm readings at all locations.  SCVF/GM testing done as per CNRL SCVF & GM Testing – Operational Procedure: No issues.  Ensure vent is clear. Bubble test SCV for 15 min (No Bubbles)
07:30	5.00	Travel to location Sweep work area with bump tested LEL monitor 0 - LEL's & 0 - PPM H2S. Conduct pre job safety meeting with services complete and review, Hazard Assessment, TIW and OROGO Regulations. Ensure all personnel have had CSO or PST Orientation. Review Beaver Enterprises & Nahanni Hazard Assessment. Dig down 2.5 M below GL. Weld vented plate between Surface & Production Casings. Weld on 139.7mm vented cap with ID #1989. Push in 5 M 73mm Jnt 1 M North of well centre. Back-fill hole with clean dirt. Make up sign with ID #, Company name, Date of Cut & Cap, Coordinates with NAD 83. Spray paint Sign & post Orange. Well cut 2 M below original ground level  Ensure pictures of operations are in attachments. No Grd Dist as confirm no under ground lines in this field. Lease has wellhead & dirty dirt pile off to the side. Well is Cut & Capped Feb 10 2023 Well is now ready for reclamation.

Perforations Summary					
Date	Zone	Top (mKB)	Btm (mKB)	Type	Com
3/22/2003 00:00		587.00	591.00	Perforated	

Daily Fluids Summary				Operational Supervisors	
Fluid	To well (m³)	From well (m³)	Left to recover (m³)	Contact	Title
Fresh Water	0.00	0.00	18.00	Jeffrey Willick	Abandonment Ops Mgr.
Other	0.00	0.00		Dale Duffy	Superintendent
				Phil Millard	Wellsite Supervisor
				Contractor	Rig Number
				Rig Manager	