



Well Operations Report

Well Name:	NETLA K-77
UWI:	300/K-77-60.50-122.30/00
License #:	WID1862
Field:	FT LIARD (5501)
Profile:	Directional
Zone:	Slave Point
Class:	Level I

CNRL has performed the well abandonment operations within the last 30 days for this well as outlined in the approved program. Included in this document are the daily reports, and a wellbore schematic of the current state of the well. This well still has a SCVF that CNRL is monitoring with a Vent Nanny with the goal that the SCVF will die out from the remedial attempts performed. Additional documentation will follow in the summer once a gas migration test is complete with a change of well status form, and pictures of the cut and capped wellbore if the SCVF dies out.

Please advise if any additional information is required

Thank you,

Canadian Natural Resources Limited

A handwritten signature in black ink, appearing to read "Terran Bernhard", written in a cursive style.

Terran Bernhard, P.Eng.

Abandonment Engineer

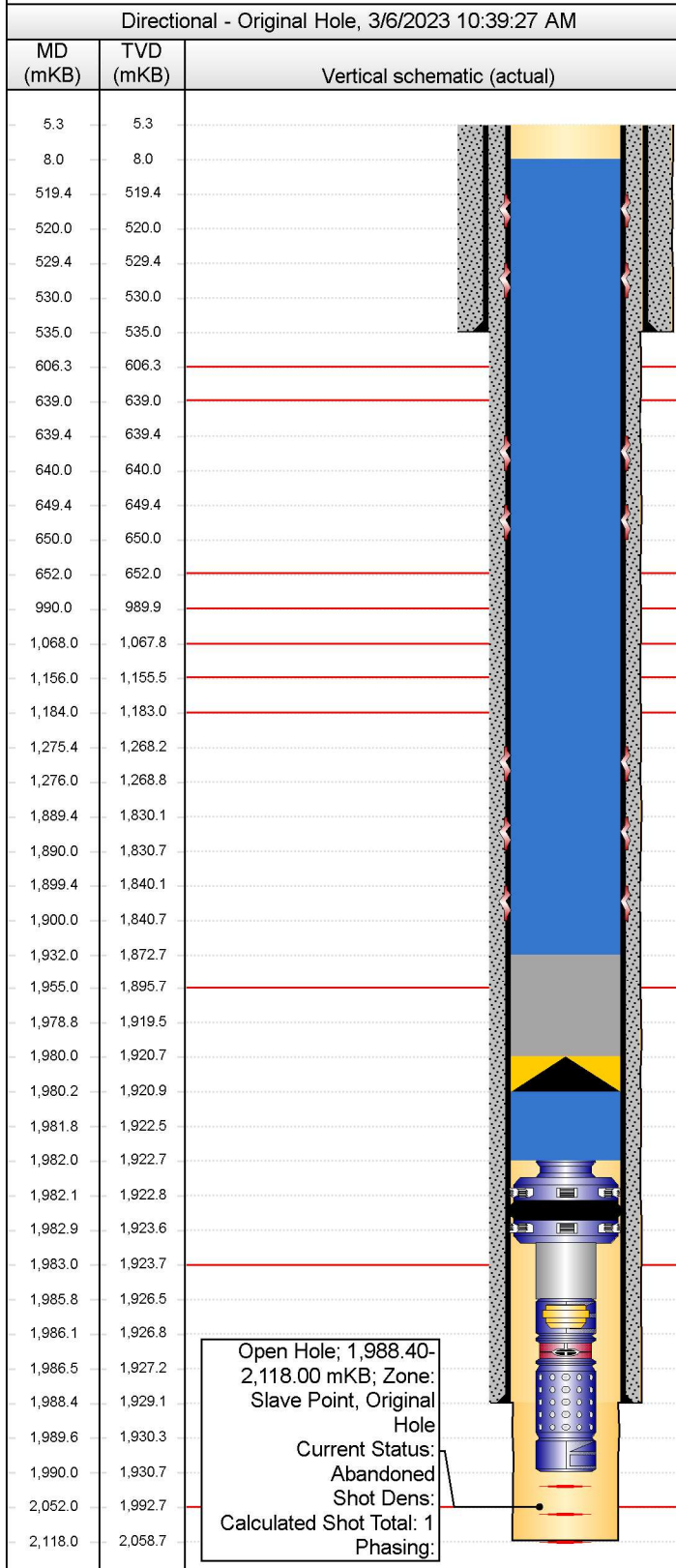
Canadian Natural Resources Limited

Suite 2100, 855 - 2 Street SW, Calgary, Alberta, T2P 4J8 T 403.517.6700 F 403.514.7677 www.cnrl.com

Downhole Schematic (Gov't Submission)

SUNCOR NETLA K-77

Current Event (UWI) 300/K-77-60.50-122.30/00	Surface Legal Location I-77-60-50-122-30	License # NT001862	Field Name FT LIARD	Province N.W.T
Well Profile Directional	Fluid Type Deep Gas	Original KB Elevation (m) 625.20	KB-Ground Distance (m) 6.30	KB-Casing Flange Distance (m) 6.45
Latitude (°)	Longitude (°)	Orig Spud Date 2/7/1999	Orig RR Date 3/2/1999	C&C Date
		GW Protected? No	BGWP (mKB) No	Oilsand Area No
Directions To Well North from Ft.Liard on NWT Hwy #7 to KM Marker #92, right (easet) 40km to location on winter road.				H2S Classification Sour



SCVF & GM Tests (Last 2 Records)							
Test Date		Test Type		Failed?			
7/29/2020		SCVF		Yes			
9/12/2022		SCVF		Yes			
Openhole Information							
Section Des		Size (mm)	Top (mKB)	Bottom (mKB)			
Surface		311.2	5.30	535.00			
Intermediate 1		222.2	535.00	1,988.40			
Main 1		155.6	1,988.40	2,118.00			
Casing Strings							
Csg Des		OD (mm)	Wt/Len (kg/m)	Grade	Set Depth (MD) (mKB)		
Surface		244.5	53.574	J-55	5.30		
Production		177.8	34.228	L-80	5.30		
Cement Stages							
Description		Cementing Start Date	Top Depth (mKB)	Btm (mKB)	Vol Cement Re...		
Production Cement			5.30	1,988.40	8.00		
Comment							
43.0 tonnes 1-1-2 G + 0.3% D65 + 0.2% D46 + 0.1% B71 tailed with 12.0 tonnes RFC + 38.0% D-066 (silica) + 0.1% D136 + 0.4% B71 + 0.2% D46 + 1.0% D160 + 0.75% D65, Top of tail cement est'd at 1800mKB, 8.0m3 fill cement to surface.							
Description		Cementing Start Date	Top Depth (mKB)	Btm (mKB)	Vol Cement Re...		
Surface Cement			5.30	535.00	5.00		
Comment							
35.0 tonnes RFC + 1.0% CaCl2, 5.0m3 cement returns							
Perforations							
Zone		Top (mKB)	Btm (mKB)	Current Status			
Slave Point, Original Hole		1,988.40	2,118.00	Abandoned			
Tubing Strings							
Tubing - Production set at 1,989.99mKB on 3/22/1999 00:00							
Tubing Description			String Max N...	Wt (kg/m)	String Grade		
Tubing - Production			88.9	13.840	J-55		
Comment							
Permanent Packer Pressure tested to 21 MPa for 15 minutes - 13-Mar-1999.							
Tubing dry. Dumped 40 litres of inhibitor - 10-May-1999							
Tubing Components							
Item #	Jts	Item Des	OD (mm)	ID (mm)	Len (m)	Top (mKB)	Btm (mKB)
1-1	1	Chrome Baker E-22 Anchor Seal As...	88.9	72.8	0.25	1,981.80	1,982.05
1-2	1	Chrome Baker FB-1 Perm Packer	152.4	101.0	0.89	1,982.05	1,982.94
1-3	1	Chrom Proficient VAM Tubing Pup J...	88.9	76.0	2.86	1,982.94	1,985.80
1-4	1	Chrome Proficient VAM QX Nipple 6...	88.9	69.9	0.33	1,985.80	1,986.13
1-5	1	Chrome Baker VAM Underbalance...	88.9	76.0	0.33	1,986.13	1,986.46
1-6	1	Chrome Proficient VAM Perforated P...	88.9	76.0	3.15	1,986.46	1,989.61
1-7	1	Proficient OXN Nipple 69.85 x 66.9...	88.9	66.9	0.38	1,989.61	1,989.99
Other In Hole							
Des		Run Date		Pull Date	Top (mKB)	Btm (mKB)	
BPV (for visual)		5/9/1999		2/1/2023	5.00	5.20	
Inhibited Water		3/13/1999		2/1/2023	5.30	1,982.10	
Fresh water		2/1/2023			8.00	1,982.00	
Casing Expansion #7		2/8/2023			519.40	520.00	
Casing Expansion #6		2/8/2023			529.40	530.00	
Casing Expansion #5		2/8/2023			639.40	640.00	
Casing Expansion #4		2/8/2023			649.40	650.00	
Casing Expansion #3		2/8/2023			1,275.40	1,276.00	
Casing Expansion #2		2/8/2023			1,889.40	1,890.00	
Casing Expansion #1		2/8/2023			1,899.40	1,900.00	
Cement plug		2/3/2023			1,932.00	1,980.00	
Bridge Plug - Permanent 10K		2/2/2023			1,978.80	1,980.20	

Downhole Schematic (Gov't Submission)

SUNCOR NETLA K-77

Current Event (UWI) 300/K-77-60.50-122.30/00	Surface Legal Location I-77-60-50-122-30	License # NT001862	Field Name FT LIARD	Province N.W.T
Well Profile Directional	Fluid Type Deep Gas	Original KB Elevation (m) 625.20	KB-Ground Distance (m) 6.30	KB-Casing Flange Distance (m) 6.45

Directional - Original Hole, 3/6/2023 10:39:28 AM

MD (mKB)	TVD (mKB)	Vertical schematic (actual)
5.3	5.3	
8.0	8.0	
519.4	519.4	
520.0	520.0	
529.4	529.4	
530.0	530.0	
535.0	535.0	
606.3	606.3	
639.0	639.0	
639.4	639.4	
640.0	640.0	
649.4	649.4	
650.0	650.0	
652.0	652.0	
990.0	989.9	
1,068.0	1,067.8	
1,156.0	1,155.5	
1,184.0	1,183.0	
1,275.4	1,268.2	
1,276.0	1,268.8	
1,889.4	1,830.1	
1,890.0	1,830.7	
1,899.4	1,840.1	
1,900.0	1,840.7	
1,932.0	1,872.7	
1,955.0	1,895.7	
1,978.8	1,919.5	
1,980.0	1,920.7	
1,980.2	1,920.9	
1,981.8	1,922.5	
1,982.0	1,922.7	
1,982.1	1,922.8	
1,982.9	1,923.6	
1,983.0	1,923.7	
1,985.8	1,926.5	
1,986.1	1,926.8	
1,986.5	1,927.2	
1,988.4	1,929.1	
1,989.6	1,930.3	
1,990.0	1,930.7	
2,052.0	1,992.7	
2,118.0	2,058.7	

Other In Hole

Des	Run Date	Pull Date	Top (mKB)	Btm (mKB)
Plug and Prong	5/9/1999		1,985.85	1,986.05

Formation Tops

Formation Name	Top (mKB)	Com
Base Ground Water	606.30	OROGO default
Exshaw	639.00	Tight
Kotcho	652.00	Tight
Tetcho	990.00	Tight
Trout River	1,068.00	Tight
Kakisa	1,156.00	Tight
Fort Simpson	1,184.00	Tight
Muskwa	1,955.00	Tight
Slave Point	1,983.00	Porous
Fort Vermilion	2,052.00	Tight

Open Hole; 1,988.40-
2,118.00 mKB; Zone:
Slave Point, Original
Hole
Current Status:
Abandoned
Shot Dens:
Calculated Shot Total: 1
Phasing:



Daily Service Report (Gov't Submissions)

SUNCOR NETLA K-77

Job: Abandonment
Report #: 1.0
1/15/2023 12:00 to 1/15/2023 17:00

Current Event (UWI) 300/K-77-60.50-122.30/00		Surface Legal Location I-77-60-50-122-30		License # NT001862	Field Name FT LIARD		Province N.W.T	
WI (%) 100.00	Objective						Plug Back Depth (mKB)	
Job Start Date 1/15/2023		Ground Elevation (m) 618.90	Tubing Head Elevation (m)	KB-TH (m)		Casing Pressure (kPa)	Tubing Pressure (kPa) 20	Set Depth (MD) (mKB)
Job End Date		Original KB Elevation (m) 625.20	Casing Flange Elevation (m) 618.75	KB-Casing Flange Distance (m) 6.45	Road Condition Rough	Weather Clear	Temperature (°C) -15	

Daily Activities	
Morning Ops @ 7am SR: MIRUSR	
Daily Operations Summary Move wellhead crew to location. Sweepped location with 4 head gas monitor with no LEL'S or H2S detected. Bubble test SCV = No Bubbles. SITP 20 KpaDW. Rig in wellhead equipment Sting into BPV & equalize 12.5 Mpa below BPV & Stuck. Lower master valve started leaking through valve stem. Pull out of BPV & Shut in well. Bleed Pressure down to 0 Kpa above BPV (HOLDING) Shut in & secure well. Rig out all equipment. Travel to Camp. Jan 16 - Move in ROKE & set up SCV vent nanny flow meter and test satilite system (good)	
Time Log	
Start Time	Dur (hr) Com
12:00	0.50 Travel from A-77 to above location. Move in Stream Flo, United Safety air hand,
12:30	0.50 Review CNRL hazard assessment and TIW plan. Service providers complete HA & JSA for tasks today. Held safety meeting with all personal reveiwed hazards of spotting equipment and pulling BPV. Slips, trips, line fo fire, pinch points, backing up using spotters,
13:00	3.00 Moved in and spotted Stream flo unit. Check for hazards around wellhead. Had safety hand don air pack and checked for any H2S on tbg. No H2S. SITP 20 KpaDW. Make up 50.8mm Lubricator & screw into BPV. Discover 12.5 Mpa below BPV & Stuck. Discover lower master valve started leaking through valve stem. Notify Calgary of well status. Decide to let SR pull BPV. Screw out of BPV & Lubricate out stinger. Shut in & secure well. Rig out Stream Flo crew. Bleed down pressure above BPV to 0 Kpa (holding) Shut in & secure well.
16:00	1.00 Travel to camp.
17:00	Jan 16 - Move in ROKE and set up vent nanny flow meter on SCV and Satellite system to record flow & test (good)

Perforations Summary	

Daily Fluids Summary				Operational Supervisors	
Fluid	To well (m³)	From well (m³)	Left to recover (m³)	Contact	Title
				Jeffrey Willick	Abandonment Ops Mgr.
				Dale Duffy	Superintendent
				Phil Millard	Wellsite Supervisor
				Contractor	Rig Number
				Rig Manager	



Daily Service Report (Gov't Submissions)

SUNCOR NETLA K-77

Job: Abandonment
Report #: 2.0
1/31/2023 12:00 to 1/31/2023 19:00

Current Event (UWI) 300/K-77-60.50-122.30/00		Surface Legal Location I-77-60-50-122-30		License # NT001862	Field Name FT LIARD		Province N.W.T	
WI (%) 100.00	Objective						Plug Back Depth (mKB)	
Job Start Date 1/15/2023		Ground Elevation (m) 618.90	Tubing Head Elevation (m)	KB-TH (m)	Casing Pressure (kPa) 0	Tubing Pressure (kPa) 0	Set Depth (MD) (mKB)	
Job End Date		Original KB Elevation (m) 625.20	Casing Flange Elevation (m) 618.75	KB-Casing Flange Distance (m) 6.45	Road Condition Rough	Weather Clear	Temperature (°C) -16	

Daily Activities							
Morning Ops @ 7am							
SR: Remove BPV							
Daily Operations Summary							
Moved rig and equipment including testers fro A77. Spotted and rigged all equipment to CNRL and OROGOO rules and regulations. Checked tbg and csg zero pressure. No H2S on tbg. Poured penetrating oil on top of BPV. Secured well. Tarpped in bop's and wellhead.							
Time Log							
Start Time	Dur (hr)	Com					
12:00	0.50	Moved rig and equipment including testers from A77 to location 1km. Unload and spotted equipment.					
12:30	0.25	Filled out hazard assessmnet. Filled out JSA'S for tasks today and discussed hazards of each operation and reviewed sop's. Hazards Line of fire, swing path, over head loads, high pressure lines, hot steam lines.Reviewed hazards of standing derrick. Use spotters at all times.					
12:45	6.25	Spotted rig on matting stood derrick and secured. Rigged in testers equipment, accummulator lines, boiler lines, pump, tank and pump lines. Grounded and bonded all equipment. Fired up boiler. Checked SITP 0 kpa, SICP 0 kPa. No H2S on tbg. Poured penetrating oil down on top of BPV and secured well. Traped in bop's and wellhead. Spotted and rigged catwalk/piperacks. 19:00hrs SDFN					

Perforations Summary			

Daily Fluids Summary				Operational Supervisors	
Fluid	To well (m³)	From well (m³)	Left to recover (m³)	Contact	Title
Fresh Water				Roy Craft	Wellsite Supervisor
				Dale Duffy	Superintendent
				Jeffrey Willick	Abandonment Ops Mgr.
				Ashley Marshall	Rig Manager
				Contractor Precision Well Servicing	Rig Number 119
				Rig Manager Ashley Marshall	



Daily Service Report (Gov't Submissions)

SUNCOR NETLA K-77

Job: Abandonment
Report #: 3.0
2/1/2023 07:30 to 2/1/2023 19:00

Current Event (UWI) 300/K-77-60.50-122.30/00		Surface Legal Location I-77-60-50-122-30		License # NT001862	Field Name FT LIARD		Province N.W.T	
WI (%) 100.00	Objective						Plug Back Depth (mKB)	
Job Start Date 1/15/2023	Ground Elevation (m) 618.90	Tubing Head Elevation (m)	KB-TH (m)		Casing Pressure (kPa) 0	Tubing Pressure (kPa) 12,000	Set Depth (MD) (mKB)	
Job End Date	Original KB Elevation (m) 625.20	Casing Flange Elevation (m) 618.75	KB-Casing Flange Distance (m) 6.45	Road Condition Rough	Weather Clear	Temperature (°C) -30		

Daily Activities	
Morning Ops @ 7am SR: Run PBP, PT, LOG	
Daily Operations Summary Pulled BPV 12000kPa below. Bled off tbg to flare 0.40e3m3 sweet gas. Filled tbg 8.5m3 pressure tested 7000kPa 10 min solid. Pessure tested csg 7000kPa 10 min solid. Checked precharge pressure accumulator function tested bop's. Stump tested blind rams 1400kPa low and 34000kPa high 10 min each. N/D WLHD. N/U BOP'S PT pipe rams 1400kPa low and 34000kPa high, annular 1400kPa low and 7000kPa high all 10 min each. Come off packer with on/off circulated over to fresh water with toal 38.0m3. POOH laying down 89mm eue tbg 140 jts. Top off well 1.5m3 drained equipment secured well	
Time Log	
Start Time	Dur (hr)
07:30	0.50
08:00	1.00
09:00	1.00
10:00	2.50
12:30	1.50
14:00	4.50

Perforations Summary	

Daily Fluids Summary				Operational Supervisors	
Fluid	To well (m³)	From well (m³)	Left to recover (m³)	Contact	Title
Fresh Water	38.00	0.00	38.00	Roy Craft	Wellsite Supervisor
Produced Water				Dale Duffy	Superintendent
				Jeffrey Willick	Abandonment Ops Mgr.
				Ashley Marshall	Rig Manager
				Contractor Precision Well Servicing	Rig Number 119
				Rig Manager Ashley Marshall	



Daily Service Report (Gov't Submissions)

SUNCOR NETLA K-77

Job: Abandonment
Report #: 4.0
2/2/2023 07:30 to 2/2/2023 19:00

Current Event (UWI) 300/K-77-60.50-122.30/00		Surface Legal Location I-77-60-50-122-30		License # NT001862	Field Name FT LIARD		Province N.W.T	
WI (%) 100.00	Objective						Plug Back Depth (mKB)	
Job Start Date 1/15/2023		Ground Elevation (m) 618.90	Tubing Head Elevation (m)	KB-TH (m)	Casing Pressure (kPa) 0	Tubing Pressure (kPa) 0	Set Depth (MD) (mKB)	
Job End Date		Original KB Elevation (m) 625.20	Casing Flange Elevation (m) 618.75	KB-Casing Flange Distance (m) 6.45	Road Condition Rough	Weather Clear	Temperature (°C) -28	

Daily Activities	
Morning Ops @ 7am SR: RIH with 73mm tbg	
Daily Operations Summary Pull and lay down 89mm eue tbg 66 jts with on/off tool. total of 206jts. MIRU wireline. RIH with 147.0mm gauge ring junk basket to 1981.0mKB. POOH. RIH with 161.7mm 10K PBP set c/e at 1980.0mKB. PT plug and csg to 7180kPa 10 min solid test. RIH with RBL to 1980.0mKB and log to surface zero pressure. Ran back down1980.0mKB and log 7000kPa pressure pass to surface. Bled off pressure layed down tools. Rig out and release e-line. Land tbg hanger and pressure tested 73mm pipe rams 1400kPa low and 34000kPa high 10 min each. Pull hanger drained equipment secured well.	
Time Log	
Start Time	Dur (hr)
07:30	0.50
08:00	1.00
09:00	10.50

Perforations Summary	

Daily Fluids Summary				Operational Supervisors	
Fluid	To well (m³)	From well (m³)	Left to recover (m³)	Contact	Title
Fresh Water	0.00	0.00	38.00	Roy Craft	Wellsite Supervisor
Produced Water				Dale Duffy	Superintendent
				Jeffrey Willick	Abandonment Ops Mgr.
				Ashley Marshall	Rig Manager
				Contractor Precision Well Servicing	Rig Number 119
				Rig Manager Ashley Marshall	



Daily Service Report (Gov't Submissions)

SUNCOR NETLA K-77

Job: Abandonment
Report #: 5.0
2/3/2023 07:30 to 2/3/2023 19:00

Current Event (UWI) 300/K-77-60.50-122.30/00		Surface Legal Location I-77-60-50-122-30		License # NT001862	Field Name FT LIARD		Province N.W.T	
WI (%) 100.00	Objective						Plug Back Depth (mKB)	
Job Start Date 1/15/2023		Ground Elevation (m) 618.90	Tubing Head Elevation (m)	KB-TH (m)		Casing Pressure (kPa)	Tubing Pressure (kPa)	Set Depth (MD) (mKB)
Job End Date		Original KB Elevation (m) 625.20	Casing Flange Elevation (m) 618.75	KB-Casing Flange Distance (m) 6.45	Road Condition Rough	Weather Clear	Temperature (°C) -27	

Daily Activities		
Morning Ops @ 7am		
SR: POOH laying down tbg		
Daily Operations Summary		
Tally in hole with 211 jts and 2 pup jts tagged PBP at 1980.0mKB. Picked up 0.50m3 above plug. Waited on cementers over on C 7 well. MIRU C/A unit rigged line on to tbg. Filled lines broke circulation with 0.50m3 fresh water @ 400L/min 3000kPa. Mixed up 1.0m3 of 1800kg/m Thremal 40 Pumped cement @ 500L/min 4000kPa. Displaced with 5.4m3 of fresh water and balanced plug. Rigged off iron cleaned up C/A unit. Pulled and layed down 10 jts tbg. Back washed tbg with 10.0m3 fresh water. Cement top at 1932.0mKB. Shut in tbg and pressured up well to 7000kPa. Secured well. Drained all equipment transfered all clean fluid to 64m3 tank. Rigged out 1 pump line.		
Time Log		
Start Time	Dur (hr)	Com
07:30	0.50	07:30hrs. Serviced and started equipment. Filled out JSA'S for tasks today and discussed hazards of each operation and reviewed sop's. Hazards Line of fire, swing path, over head loads, high pressure lines, hot steam lines and hazards of picking up pipe from cat walk. Discussed muster points dog house and lease entrance or up wind.
08:00	4.50	Tally in hole with 211 jts and 2 pup jts tagged PBP at 1980.0mKB. Picked up 0.50m3 above plug. Rigged in circulating equipment circulate well while waiting on cementers.
12:30	1.75	Wait on cementers was on C-7 doing cement squeeze.
14:15	0.25	Held safety meetig with all personal. Filled out JSA and reveiwed hazards of doing cement job. Line fire, high pressure line, slips, trips, pinch points, swing path. Reviewed cement program for balancing 1.0m3 of cement.
14:30	2.50	MIRU C/A unit rigged line on to tbg. Filled lines broke circulation with 0.50m3 fresh water @ 400L/min 3000kPa. Mixed up 1.0m3 of 1800kg/m Thremal 40 with CHRT-H 0.5%, CHFL-1 0.3%, CHFR-1 0.05%, CHDF-P 0.2%, CHGC-2 1%. Pumped cement @ 500L/min 4000kPa. Displaced with 5.4m3 of fresh water and balanced plug. Rigged off iron cleaned up C/A unit. Cement top at 1932.0mKB. Pulled and layed down 10 jts tbg. Back washed tbg with 10.0m3 fresh water. Shut in tbg and pressured up well to 7000kPa. Secured well. Drained all equipment transfered all clean fluid to 64m3 tank. Rigged out 1 pump line. Tarpped in tbg. 16:00hrs SDFN

Perforations Summary		

Daily Fluids Summary				Operational Supervisors	
Fluid	To well (m³)	From well (m³)	Left to recover (m³)	Contact	Title
Fresh Water	0.00	0.00	38.00	Roy Craft	Wellsite Supervisor
Produced Water	0.00	0.00		Dale Duffy	Superintendent
				Jeffrey Willick	Abandonment Ops Mgr.
				Ashley Marshall	Rig Manager
				Contractor Precision Well Servicing	Rig Number 119
				Rig Manager Ashley Marshall	



Daily Service Report (Gov't Submissions)

SUNCOR NETLA K-77

Job: Abandonment
Report #: 6.0
2/4/2023 07:30 to 2/4/2023 19:00

Current Event (UWI) 300/K-77-60.50-122.30/00			Surface Legal Location I-77-60-50-122-30		License # NT001862		Field Name FT LIARD		Province N.W.T	
WI (%) 100.00	Objective								Plug Back Depth (mKB)	
Job Start Date 1/15/2023	Ground Elevation (m) 618.90		Tubing Head Elevation (m)	KB-TH (m)		Casing Pressure (kPa)		Tubing Pressure (kPa)		Set Depth (MD) (mKB)
Job End Date	Original KB Elevation (m) 625.20		Casing Flange Elevation (m) 618.75		KB-Casing Flange Distance (m) 6.45		Road Condition Rough	Weather Clear	Temperature (°C) -26	

Daily Activities								
Morning Ops @ 7am								
SR: Load rig equipment haul out								
Daily Operations Summary								
Checked csg 7000kPa bled off. POOH laying down 201 jts. Rigged out floor remove bop's top off well with 0.50m3 well with fresh water. Fluid level down 5m. Installed wellhead rigged out rig and all equipment. Secured well. Had picker set tbg on ground from pipe racks. Move rig to camp.								
Time Log								
Start Time	Dur (hr)	Com						
07:30	0.50	07:30hrs. Serviced and started equipment. Filled out JSA'S for tasks today and discussed hazards of each operation and reviewed sop's. Hazards Line of fire, swing path, over head loads, hazards of laying down tbg on cat walk. Discussed muster points dog house and lease entrance or up wind.						
08:00	4.00	Checked SICP 7000kPa bled pressure off. POOH laying 201 jts 73mm tbg. Held bop drill 1min to secure well.						
12:00		Rigged out tongs, floor and bop's. Topped off well with 0.50m3 fresh water 5m from surface. Installed wellhead rigged out rig and all equipment. Cleaned up location and secured well. Move rig and equipmen to camp. Have picker place tbg on ground. Had tank truck empty 64m3 tank and boiler haul to tank farm.						

Perforations Summary			

Daily Fluids Summary				Operational Supervisors	
Fluid	To well (m³)	From well (m³)	Left to recover (m³)	Contact	Title
Fresh Water			38.00	Roy Craft	Wellsite Supervisor
Produced Water	0.00	0.00		Dale Duffy	Superintendent
				Jeffrey Willick	Abandonment Ops Mgr.
				Ashley Marshall	Rig Manager
				Contractor	
				Precision Well Servicing	
				Rig Number	
				119	
				Rig Manager	
				Ashley Marshall	



Daily Service Report (Gov't Submissions)

SUNCOR NETLA K-77

Job: Abandonment
Report #: 7.0
2/5/2023 07:00 to 2/5/2023 16:00

Current Event (UWI) 300/K-77-60.50-122.30/00			Surface Legal Location I-77-60-50-122-30		License # NT001862		Field Name FT LIARD		Province N.W.T				
WI (%) 100.00	Objective								Plug Back Depth (mKB)				
Job Start Date 1/15/2023		Ground Elevation (m) 618.90		Tubing Head Elevation (m)		KB-TH (m)		Casing Pressure (kPa)		Tubing Pressure (kPa)		Set Depth (MD) (mKB)	
Job End Date		Original KB Elevation (m) 625.20		Casing Flange Elevation (m) 618.75		KB-Casing Flange Distance (m) 6.45		Road Condition Rough		Weather Clear		Temperature (°C) -21	

Daily Activities

Morning Ops @ 7am
WL: Wait on wireline

Daily Operations Summary
Moved rig and equipment to fort nelson. Had trucks load boiler, matting, catwalk, 64m3 tank junkbox. Hauled to Coopers yard in fort nelson. Reset crew fire up on feb 13.

Time Log

Start Time	Dur (hr)	Com
07:00	9.00	Moved rig and equipment from camp to fort nelson. Had trucks load aux equipment haul to fort nelson.

Perforations Summary

Daily Fluids Summary				Operational Supervisors	
Fluid	To well (m³)	From well (m³)	Left to recover (m³)	Contact	Title
Fresh Water	0.00	0.00	38.00	Roy Craft	Wellsite Supervisor
Produced Water	0.00	0.00		Dale Duffy	Superintendent
				Jeffrey Willick	Abandonment Ops Mgr.
				Ashley Marshall	Rig Manager
				Contractor Precision Well Servicing	Rig Number 119
				Rig Manager Ashley Marshall	



Daily Service Report (Gov't Submissions)

SUNCOR NETLA K-77

Job: Abandonment
Report #: 8.0
2/7/2023 13:30 to 2/7/2023 17:30

Current Event (UWI) 300/K-77-60.50-122.30/00		Surface Legal Location I-77-60-50-122-30		License # NT001862	Field Name FT LIARD		Province N.W.T	
WI (%) 100.00	Objective						Plug Back Depth (mKB)	
Job Start Date 1/15/2023		Ground Elevation (m) 618.90	Tubing Head Elevation (m)	KB-TH (m)		Casing Pressure (kPa) 0	Tubing Pressure (kPa)	Set Depth (MD) (mKB)
Job End Date		Original KB Elevation (m) 625.20	Casing Flange Elevation (m) 618.75	KB-Casing Flange Distance (m) 6.45	Road Condition Rough	Weather Overcast	Temperature (°C) -18	

Daily Activities		
Morning Ops @ 7am		
WL: Run Expansion Tools		
Daily Operations Summary		
SICP = 0 kpa. Remove 179.2mm 5K THF. Install 3K Orbit valve & bolt down. Heat Expansion tools with Conley Max heater over night. RIH w/ 152.4mm Gauge ring below lowest Expansion interval. POOH with Gauge ring. Rig down W/L. SIW. SDFN.		
Time Log		
Start Time	Dur (hr)	Com
13:30	0.25	Travel from A-77 to location. Move in Eclipse E-line truck #MM013 c/w 177.8mm Lubricator. Move in Poorboy Picker & Renegade tool hand. Move in Stream Flo wellhead crew.
13:45	0.25	Hold Pre-Job Safety meetingong with all Services, Review Hazard Assessment,TIWP and Fire & Explosion,4-Pillars of safety,Ensure personal have CNRL CSO Orientation. All workers fit for duty,Review JSA's and sign off on services Hazard Assessment, Review Procedures for Expansion tool. All required PPE. Check pressures, Line of fire, swing path,Crush Zones high overhead loads, steam lines. Slips & Trips Know muster points and plan escape routes. Use 3 point contact at all times.Traffic Moving Equip Blind Spots and Spotters Good Communication at all time.
14:00	0.50	SICP 0 Kpa. Remove 5K Tubing head flange. Install 3K Orbit valve c/w step studs. Install Eclipse W/L 5K flange.
14:30	2.00	Rig up Eclipse Wireline check all connections with Renegade expansion tool (good) Make up 152.4mm Gauge ring c/w Pack-off. RIH with 152.4mm Gauge ring below lowest Expansion interval (good) POOH with 152.4mm Gauge ring. Shut in & secure well. Leave Conley Max heater on Expansion tools all night. SDFN.
16:30	1.00	Travel to Camp.

Perforations Summary			

Daily Fluids Summary				Operational Supervisors	
Fluid	To well (m³)	From well (m³)	Left to recover (m³)	Contact	Title
Fresh Water	0.00	0.00	38.00	Jeffrey Willick	Abandonment Ops Mgr.
Produced Water	0.00	0.00		Dale Duffy	Superintendent
				Phil Millard	Wellsite Supervisor
				Contractor	Rig Number
				Rig Manager	



Daily Service Report (Gov't Submissions)

SUNCOR NETLA K-77

Job: Abandonment
Report #: 9.0
2/8/2023 06:30 to 2/8/2023 19:00

Current Event (UWI) 300/K-77-60.50-122.30/00		Surface Legal Location I-77-60-50-122-30		License # NT001862	Field Name FT LIARD		Province N.W.T	
WI (%) 100.00	Objective						Plug Back Depth (mKB)	
Job Start Date 1/15/2023		Ground Elevation (m) 618.90	Tubing Head Elevation (m)	KB-TH (m)	Casing Pressure (kPa) 0	Tubing Pressure (kPa)	Set Depth (MD) (mKB)	
Job End Date		Original KB Elevation (m) 625.20	Casing Flange Elevation (m) 618.75	KB-Casing Flange Distance (m) 6.45	Road Condition Rough	Weather Overcast	Temperature (°C) -13	

Daily Activities		
Morning Ops @ 7am SCVF: Monitor		
Daily Operations Summary SICP = 0 kpa. Heat Expansion tools with Conley Max heater over night. RIH 177.8mm Expansion tool & log onto depth to RBL main pass. Interval #1 - 3 Expansions @ 1900.0 mKB, 1899.4 mKB, 1899.7 mKB. Interval #2 - 3 Expansions @ 1890.0 mKB, 1889.4 mKB, 1899.7 mKB. Compter shut down. Pull up to 1075 mKB marker to get on depth & check (good) Interval #3 - 3 Expansions @ 1276.0 mKB, 1275.4 mKB, 1275.7 mKB. Pull to surface and grease tool. Interval #4 - 3 Expansions @ 650.0 mKB, 649.4 mKB, 649.7 mKB. Interval #5 - 3 Expansions @ 640.0 mKB, 639.4 mKB, 639.7 mKB. Interval #6 - 3 Expansions @ 530.0 mKB, 529.4 mKB, 529.7 mKB. Interval #7 - 3 Expansions @ 520.0 mKB, 519.4 mKB, 519.7 mKB. POOH w/ Expansion tool & break down & service. P/test Casing to 7 Mpa 10 min. Start 7000 Kpa, End 7000 Kpa (good test) Bleed off & ND Orbit valve. NU 5K THF & secure. SIW. Tarp in & leave heater on wellhead to monitor SCVF.		
Time Log		
Start Time	Dur (hr)	Com
06:30	1.25	Travel from Camp to location. Move in Eclipse E-line truck #MM013 c/w 177.8mm Lubricator. Move in Poorboy Picker & Renegade tool hand. Stream Flo crew & Combo Vac truck. Move in Trojan medic.
07:45	0.50	Hold Pre-Job Safety meetinging with all Services, Review Hazard Assessment,TIWP and Fire & Explosion,4-Pillars of safety,Ensure personal have CNRL CSO Orientation. All workers fit for duty,Review JSA's and sign off on services Hazard Assessment, Review Procedures for Expansion tool. All required PPE. Check pressures, Line of fire, swing path,Crush Zones high overhead loads, steam lines. Slips & Trips Know muster points and plan escape routes. Use 3 point contact at all times.Traffic Moving Equip Blind Spots and Spotters Good Communication at all time.
08:15	9.25	Rig up Eclipse Wireline check all connections with Renegade expansion tool (good) Make up 177.8mm Expansion tool & function test (good) RIH with Casing Expansion tool 60 M minute in hole to 1920 mKB. Pull CCL strip & Correlate to RBL log, get on depth. OROGO on site to watch Expansion procedure. Interval #1 - 3 Expansions @ 1900.0 mKB, 1899.4 mKB, 1899.7 mKB. Interval #2 - 3 Expansions @ 1890.0 mKB, 1889.4 mKB, 1899.7 mKB. Compter shut down. Pull up to 1075 mKB marker to get on depth & check (good) Pull CCL Strip through 2 lower intervals. Interval #3 - 3 Expansions @ 1276.0 mKB, 1275.4 mKB, 1275.7 mKB. Pull CCL strip through interval. Pull to surface and grease tool. Interval #4 - 3 Expansions @ 650.0 mKB, 649.4 mKB, 649.7 mKB. Interval #5 - 3 Expansions @ 640.0 mKB, 639.4 mKB, 639.7 mKB. Interval #6 - 3 Expansions @ 530.0 mKB, 529.4 mKB, 529.7 mKB. Interval #7 - 3 Expansions @ 520.0 mKB, 519.4 mKB, 519.7 mKB. **Note: Total 21 Expansion dents in Casing. Drop down to 675 mKB & pull CCL strip through all upper Expansions on log. POOH with 177.8mm Expansion tools & lay down. Service tools & grease. Lay down Eclipse W/L & rig out equipment. Rig out Renegade Expansion tools.
17:30	0.25	Fill hole to surface with Combo valve truck fresh water. P/test casing to 7 Mpa 10 min: Start 7000 Kpa, End 7000 Kpa (good test) Bleed off back to vac truck.
17:45	1.25	Stream Flo crew Remove 179.2mm x 3K Orbit valve. Install 179.2mm x 5K Tubing head flange & bolt down. Close all valves on wellhead. Tarp in wellhead & continue heating with Conley Max dry heater to monitor SCVF vent nanny. Travel to camp.

Perforations Summary		

Daily Fluids Summary				Operational Supervisors	
Fluid	To well (m³)	From well (m³)	Left to recover (m³)	Contact	Title
Fresh Water	0.00	0.00	38.00	Jeffrey Willick	Abandonment Ops Mgr.
Produced Water	0.00	0.00		Dale Duffy	Superintendent
				Phil Millard	Wellsite Supervisor
				Contractor Eclipse E-line Services Inc	Rig Number MM013
				Rig Manager Kevin Cage	