

**Strategic Oil & Gas Ltd.**  
**Final Well Operations Report**  
**Strategic et al Cameron 2H-03**  
**Well ID – 2073**  
**302/H03601011730/0**

- Feb 6, 2019 :** Inject 500 liters of methanol into pig sender. Performed three cleaning pig runs with air. Performed batch run with 30 liters of inhibitor ( 1 part CRO9809 and 2 parts diesel ). Installed spec blind on pipeline at H-03. Flare volume was 0.012 e3m3 in 10 minutes.
- Feb 24, 2019 :** MIRU Global #9.
- Feb 25, 2019 :** Performed SCVF test for 15 minutes. No bubbles. Attempt to rotate off of tubing pump. Unsuccessful due to suspected wax. Pumped 30.0 m3 of 45 deg C fresh water down casing. Pull and lay down rods. 9 sinker bars remain in the hole. Installed and pressure tested BOP's. Unset anchor.
- Feb 26, 2019 :** MIRU Bonnett's wireline. RIH and mechanically punch hole in tubing at 1176.0 mCF. Pumped 8.0 m3 wax solvent followed by 4.0 m3 fresh water down tubing. Pull and lay down tubing. Inspect on the way out of the hole ( yellow – 57, blue – 34, green – 23 and red – 8 ).
- Feb 27, 2019 :** RIH with 139.7 mm 10K permanent bridge plug to 1503.0 mKB. Filled tubing with 4.5 m3 fresh water and pressured up to 15000 kPa to set bridge plug. Rotated off of BP. Circulated 11.0 m3 fresh water down tubing to fill hole. Pressure test bridge plug to 7000 kPa for 10 minutes. Solid test. Mixed 0.5 m3 of 1900 kg/m3 cement. Circulated down tubing followed by 4.3 m3 fresh water. Pulled up three joints and reverse circulated 28.0 m3 inhibited fresh water ( 0.5% CRW-132 ). No cement in returns. Cement top at 1478.7 mKB. Pull and lay down 10 joints tubing.
- Feb 28, 2019 :** Pull and lay down remaining tubing. Remove BOP's and install wellhead. Topped up casing with 1.6 m3 50/50 inhibited methanol water. Rig out.



March 28, 2019

## WELL TERMINATION RECORD

### INSTRUCTIONS:

1. Complete both pages.
2. Send one electronic copy of this form and supporting technical documentation by email to [orogo@gov.nt.ca](mailto:orogo@gov.nt.ca).
3. Send two signed hard copies of this form and supporting technical documentation by courier to:  
 Chief Conservation Officer  
 Office of the Regulator of Oil and Gas Operations  
 4th floor Northwest Tower  
 5201 50th Avenue  
 Yellowknife NT X1A 3S9

### WELL INFORMATION

Well Name	Strategic et al Cameron 2H-03	Operator	Strategic Oil & Gas Ltd.
Well Type	Development Well (if Other, specify _____)	Contractor	Global Well Servicing Rig 9
Well Identifier	2073	Current Well Status	Suspended

### RELATED LICENCES AND AUTHORIZATIONS

Operating Licence No.	NWT-OL-2014-007	Operations Authorization	OA - 1237-001
PRA Licence No.	Production Licence 017	Approval to Alter Condition of Well	ACW - 2018-015

### LOCATION INFORMATION

**Coordinates** Datum: NAD27 (if Other, please specify \_\_\_\_\_)

Surface	Lat 60 ° 2 ' 20 "	Long 117 ° 30 ' 6 "
Bottom Hole	Lat 60 ° 1 ' 40 "	Long 117 ° 30 ' 5 "

Region: Dehcho Unit H Section 3 Grid 60-10 117-30

### ACTIVITY INFORMATION

Target Formation(s)	Sulphur Point	Field/Pool(s)	/
Elevation KB/RT	775.0 m	Ground Level / Seafloor	770.2 m
Spud/Re-entry Date	Feb 6, 2019 days	Total Depth	2534.0 m KB
Rig Release Date	Feb 28, 2019	Total Vertical Depth	1423.9 m KB

### CASING AND CEMENTING PROGRAM


O.D. (mm)	Weight (kg/m)	Grade	Setting Depth (m KB)	Cementing (m³)
244.5	48.07	H-40	360.0	19.0 tonnes
177.8	34.23	L-80	1531.0	35.5 tonnes
114.3	17.26	L-80	2529.0	0



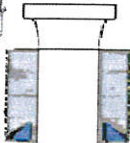
Type of Plug	Interval (m KB)	Felt	Setting Depth (m KB)	Cementing (m³)
Bridge	1478.5-1503.0	No	1503.0	0.5
Select	-	Select		
Select	-	Select		
Select	-	Select		

Interval (m KB)	Comments
1556.5-2492.8	Sulphur Point - abandoned zone
-	
-	
-	

Lost Circulation/Overpressure Zones	
Equipment Left on Site (Describe)	Oil well production equipment
Provision for Re-entry (Describe and attach sketch)	
Other Downhole Completion/Suspension	
Additional Comments	

Name	Ken Nikiforuk	Phone	(403) 767-2944 Ext
Title	Completions Manager	E-Mail	knikiforuk@sogoil.com
Operator	Strategic Oil & Gas Ltd		
Signature	 Responsible Officer of Company	Date	March 28, 2019

Unique Well Identifier 30 / - - /  
(eg. 300 / A01 60-00 120-00 / 0)



COMPANY	Strategic Oil & Gas LTD	DATE:	Feb-27-2019
WELL NAME	Strategic ET AL Cameron 2H-03 60 10N	LOCATION #:	
COMP. REP:	Shayne Stahl	2H-03	
	1 (780) 841-4105		

Tubing Size	Weight (kg/m)	Grade	Connection	Joints in Hole	Joints on Loc.

DOWNHOLE DESCRIPTION FROM BOTTOM UP (Tubing String)

ADDITIONAL EQUIPMENT	
----------------------	--

REMARKS

Drawing By:	Darcy Steffen	Drawn For:	
Phone:	(780)841-8657	Phone:	CS0031669





Tel2:  
Tel1: (780) 841-8106

Remarks:Total: 11

Reservoir Fluids Summary	Reset <input type="checkbox"/> Gas:	Daily:	10 <sup>3</sup> m <sup>3</sup> /d	Cum:	0 10 <sup>3</sup> m <sup>3</sup>	Tubing volume:	m <sup>3</sup>				
	Cums <input type="checkbox"/> Oil or Condensate:	Daily:	m <sup>3</sup>	Cum:	0 m <sup>3</sup>	Csg. ann vol:	m <sup>3</sup>				
	<input type="checkbox"/> Water:	Daily:	m <sup>3</sup>	Cum:	0 m <sup>3</sup>	Open hole vol:	m <sup>3</sup>				
	Time Swabbed/Flowed:	Daily:	0.00 hrs	Cum:	hrs	Total:	0 m <sup>3</sup>				
Load Fluids	Reset <input type="checkbox"/> OIL	Used	m <sup>3</sup>	Cum	0 m <sup>3</sup>	Rec	m <sup>3</sup>	Cum	0 m <sup>3</sup>	To Rec	0 m <sup>3</sup>
	Cums <input type="checkbox"/> WATER	Used	1.6 m <sup>3</sup>	Cum	51.1 m <sup>3</sup>	Rec	m <sup>3</sup>	Cum	0 m <sup>3</sup>	To Rec	51.1 m <sup>3</sup>
	<input type="checkbox"/> OTHER	Used	m <sup>3</sup>	Cum	0 m <sup>3</sup>	Rec	m <sup>3</sup>	Cum	0 m <sup>3</sup>	To Rec	0 m <sup>3</sup>
Hours	Service Rig Hours	Daily	11.00 hrs	Cumulative	60.00 hrs	DownTime:	hrs	Cumulative DownTime:	hrs		
	Personnel on Location	Rig:	6	Service:	4	Company:	1	Total Personnel:	11		
	Weather: Cloudy/Windy	Temp	-22 °C	Lease:	Good			Roads:	Good		
Manager:				Programmed By:							

Operator: Strategic Oil &amp; Gas Ltd.

Reporting To: Ken Nikiforuk

Consultant: Shayne Stahl

Tel2:

Tel1: (780) 841-8106

UWI: 302H036010117300		WELL: Strategic et al Cameron 2H-03		DATE: 27-Feb-2019	
24 Hr Summary: RIH with PBP, landed at 1503 mKB, OROGO inspection, set BP, tested to 7, END: 01-Mar-2019					
Formation: Sulphur Point		Surf Loc: 60°10'N 117° 30.0' W		Licence: 2073 Day #: 5	
Objective: Abandon Sulphur Point Zone		Abandonment Type: Downhole		Serv Rig Start: 24-Feb-2019 Serv Rig End: 28-Feb-2019	
Operations at 6:00: Lay down tbg, rig out.		AFE #: 19ABCAM002		AFE Estimate: \$142,964.00	
Daily Cost: \$27,112		Previous Cumulative Cost: \$77,076		Cum Cost: \$104,188	
Ground:	770.20 m	KB To TH:	5.50 m	Open Hole:	mKB
KB to Grd:	7.00 m	Tubing:	73 mm	Bot at:	1260.17 m
TD (MD):	2,534.00 m	Casing:	177.8 mm	Set at:	1531 m
PBTD:	2,523.80 m	Liner:	114.3 mm	Top at:	1506.8 m
BOP Drill: yes		BOP Press Test:		Function Test: yes	
SITP:	0 kPa	SICP:	0 kPa	SCV:	kPa H <sub>2</sub> S %

Remarks:

Time From	Time To	Hours	Code	Comments
07:00	07:30	0.5	SAFE	Conducted crew safety and operations meeting. Swept lease for LEL's and H <sub>2</sub> S. Function tested crown saver, air kills, 73.0mm pipe rams and annular.
07:30	08:00	0.5	RIG	Removed tbg hanger, function tested blind rams.
08:00	11:00	3	TRPTBG	Made up, tallied and RIH with Tryton 177.8mm hydraulic set PBP, 156 - jts and 1 space out pup.
11:00	12:30	1.5	PTST	OROGO inspection, conducted accumulator check, recorded re-charge times.
				Landed tbg hanger and tested 73.0mm pipe rams to a low of 1440 kpa for 10 mins, pressured up to 17,000 kpa, ring gasket between work spool and double gate started leaking, tightened bolts, pressured up to 19,000 kpa, ring gasket between wellhead and work
				Tightened bolts, tested to 22500 kpa for 10 mins.
12:30	14:00	1.5	CIRC	Removed tbg hanger, landed PBP at 1503.0 mKB, filled tbg with 4.50 m <sup>3</sup> fresh water. Pressured up to 15.0 MPA and set BP, pulled 15,000 daN over string weight to pack off elements.
				Rotated off of BP, filled well by circulating fresh water down tbg returning up csg to rig tank. Well fill was 11.0 m <sup>3</sup> .
14:00	16:30	2.5	PTST	Started pressure test at 14:08 hrs, ended test at 16:20 hrs, final test was 7156 kpa to 7130 kpa in 10 mins. Bled off trapped air once while testing.
16:30	20:00	3.5	CIRC	Mixed up 500 liters 1900 kg/m <sup>3</sup> cement, poured down tbg, circulated 4.30 m <sup>3</sup> fresh water down tbg. POOH with 3 - jts tbg, reverse circulated with 28.0 m <sup>3</sup> 0.50% CRW-132 inhibited fresh water. Pulled and laid down 10 - jts tbg.
				Calculated cement top at 1478.70 mKB based on 0.020535 m <sup>3</sup> /m in 34.23 kg/m 177.8mm csg.
				Secured well, drained pump and lines, SDFN.

Total: 13

Equipment on Location:

Reservoir Fluids Summary	Reset <input type="checkbox"/> Gas:	Daily:	10 <sup>3</sup> m <sup>3</sup> /d	Cum:	0 10 <sup>3</sup> m <sup>3</sup>	Tubing volume:	m <sup>3</sup>
	Cums <input type="checkbox"/> Oil or Condensate:	Daily:	m <sup>3</sup>	Cum:	0 m <sup>3</sup>	Csg. ann vol:	m <sup>3</sup>
	<input type="checkbox"/> Water:	Daily:	m <sup>3</sup>	Cum:	0 m <sup>3</sup>	Open hole vol:	m <sup>3</sup>
	Time Swabbed/Flowed:	Daily:	0.00 hrs	Cum:	hrs	Total:	0 m <sup>3</sup>
Load Fluids	Reset <input type="checkbox"/> OIL	Used	m <sup>3</sup>	Cum	0 m <sup>3</sup>	Rec	m <sup>3</sup>
	Cums <input type="checkbox"/> WATER	Used	15.5 m <sup>3</sup>	Cum	49.5 m <sup>3</sup>	Rec	m <sup>3</sup>
	<input type="checkbox"/> OTHER	Used	m <sup>3</sup>	Cum	0 m <sup>3</sup>	Rec	m <sup>3</sup>
Hours	Service Rig Hours	Daily	13.00 hrs	Cumulative	49.00 hrs	DownTime:	hrs
	Personnel on Location	Rig:	6	Service:	4	Company:	1
	Weather: Cloudy/Windy	Temp	14 °C	Lease:	Good	Roads:	Good
Manager:		Programmed By:					



Operator: Strategic Oil &amp; Gas Ltd.

Reporting To: Ken Nikiforuk

Consultant: Shayne Stahl

Tel2:

Tel1: (780) 841-8106

UWI: 302H036010117300		WELL: Strategic et al Cameron 2H-03		DATE: 26-Feb-2019	
24 Hr Summary: Perforated tbg, POOH 122 jts, stripped out sinker bars and tbg.					END: 01-Mar-2019
Formation: Sulphur Point		Surf Loc: 60°10'N 117° 30.0' W		Licence: 2073	Day #: 4
Objective: Abandon Sulphur Point Zone		Abandonment Type: Downhole		Serv Rig Start: 24-Feb-2019	Serv Rig End: 28-Feb-2019
Operations at 6:00: RIH with PBP, set and test to 7 MPA.				AFE #: 19ABCAM002	AFE Estimate: \$142,964.00
Daily Cost: \$24,963		Previous Cumulative Cost: \$52,113		Cum Cost: \$77,076	
Ground:	770.20 m	KB To TH:	5.50 m	Open Hole:	mKB
KB to Grd:	7.00 m	Tubing:	73 mm	Bot at:	1260.17 m
TD (MD):	2,534.00 m	Casing:	177.8 mm	Set at:	1531 m
PBTD:	2,523.80 m	Liner:	114.3 mm	Top at:	1506.8 m
BOP Drill: yes		BOP Press Test:		Function Test: yes	
SITP:	0 kPa	SICP:	0 kPa	SCV:	kPa H <sub>2</sub> S %

Remarks:

Time From	Time To	Hours	Code	Comments
07:00	07:30	0.5	SAFE	Conducted crew safety and operations meeting. Swept lease for LEL's and H <sub>2</sub> S. Function tested crown saver, air kills, 73.0mm pipe rams and annular.
07:30	08:30	1	WAIT	Waited for slickline.
08:30	11:00	2.5	SLICK	Rigged up Bonnet's slickline.
				RIH with mechanical knife, punched hole in tbg at 1176.0 mcf. POOH.
				Pumped 8.0 m <sup>3</sup> solvent down tbg to clean up wax, pumped 4.0 m <sup>3</sup> fresh water down tbg.
11:00	19:00	8	TRPTBG	Rigged up tbg inspector, laid down tbg hanger.
				POOH and inspected tbg. Inspected 122 - jts 73.0mm tbg. Came to sinker bars.
				Conducted BOP drill, 55 seconds to shut in.
				57 - yellow, 34 - blue, 23 - green, 8 - red.
				Installed rod BOPs, pulled 4 - sinker bars. Sucked out fluid with 25.4mm hose.
				Pulled 3 - jts, pup and anchor.
				Backed off and pulled 5 - sinker bars. Sinker bar couplings were split.
				Pulled 4 - jts of tbg, drained each jt by running 25.4mm hose through rod BOPs, then blowing steam down tbg and sucking on hose with rig pump.
				Laid down and drained BHP.
				Cleaned up around BOPs and rig floor.
				Landed tbg hanger, secured well, drained pump and lines, SDFN.

Total: 12

Equipment on Location:

Reservoir Fluids Summary	Reset <input type="checkbox"/> Gas:	Daily:	10 <sup>3</sup> m <sup>3</sup> /d	Cum:	0 10 <sup>3</sup> m <sup>3</sup>	Tubing volume:	m <sup>3</sup>
	Cums <input type="checkbox"/> Oil or Condensate:	Daily:	m <sup>3</sup>	Cum:	0 m <sup>3</sup>	Csg. ann vol:	m <sup>3</sup>
	<input type="checkbox"/> Water:	Daily:	m <sup>3</sup>	Cum:	0 m <sup>3</sup>	Open hole vol:	m <sup>3</sup>
	Time Swabbed/Flowed:	Daily:	0.00 hrs	Cum:	hrs	Total:	0 m <sup>3</sup>
Load Fluids	Reset <input type="checkbox"/> OIL	Used	m <sup>3</sup>	Cum	0 m <sup>3</sup>	Rec	m <sup>3</sup>
	Cums <input type="checkbox"/> WATER	Used	4 m <sup>3</sup>	Cum	34 m <sup>3</sup>	Rec	m <sup>3</sup>
	<input type="checkbox"/> OTHER	Used	m <sup>3</sup>	Cum	0 m <sup>3</sup>	Rec	m <sup>3</sup>
Hours	Service Rig Hours	Daily	12.00 hrs	Cumulative	36.00 hrs	DownTime:	hrs
	Personnel on Location	Rig:	6	Service:	8	Company:	1
	Weather: Cloudy	Temp	-10 °C	Lease:	Good	Roads:	Good
Manager:		Programmed By:					



114-172 Clearview Drive Red Deer County, AB T4E 0A1

Field Ticket  
Contact  
Phone

P93024

Chad Rookes

(780)512-5009

Customer Information

Company Name	Strategic Oil & Gas	Date	February 26, 2019
Surface Location	2H03	AFE No.	
UWI	2H03	Contract	
Rig Name & #	Global # 9	Co. Rep	Shayne Stahl
Area	Steen River	Code #	

Wellhead Tubing Inspection

Qty	Description	Unit Price	Total
122	Joints of 73.0mm, 9.67Kg, J55, EUE Tubing Inspected	\$ 15.00	\$ 1,830.00
430	Kms From Base & Return	\$ 1.50	\$ 645.00

Ultra Sonic Measurements		
Jt #	Wall Min	Wall Max
1	0.204	0.225
52	0.218	0.227
104	0.200	0.220

Head	60H15
Console	B0402
T-MGN	100H
R-WDS	250M

Sub Total	\$ 2,475.00
10% Discount	\$ -247.50
New Sub Total	\$ 2,227.50
GST	\$ 111.38
Total	\$ 2,338.88

0-15%	Yellow	57
16-30%	Blue	34
31-50%	Green	23
51+%	Red	8
Total		122

Order of Tubing Pulled	
125	73mm Eue J55 Tubing
1	73mm Eue J55 2.5m Pup
1	Anchor
4	73mm Eue J55 Tubing
1	73mm Eue J55 1.86m Pup
1	Pump

Notes	Time Requested	9:00 AM	Inspection Start Time	11:10 AM
First 50 joints were mostly Yellow Band, Second half of well had very little Yellow band. No Yellow band joints after joint 86.				

Inspector Cyril Gorman

Customer \_\_\_\_\_



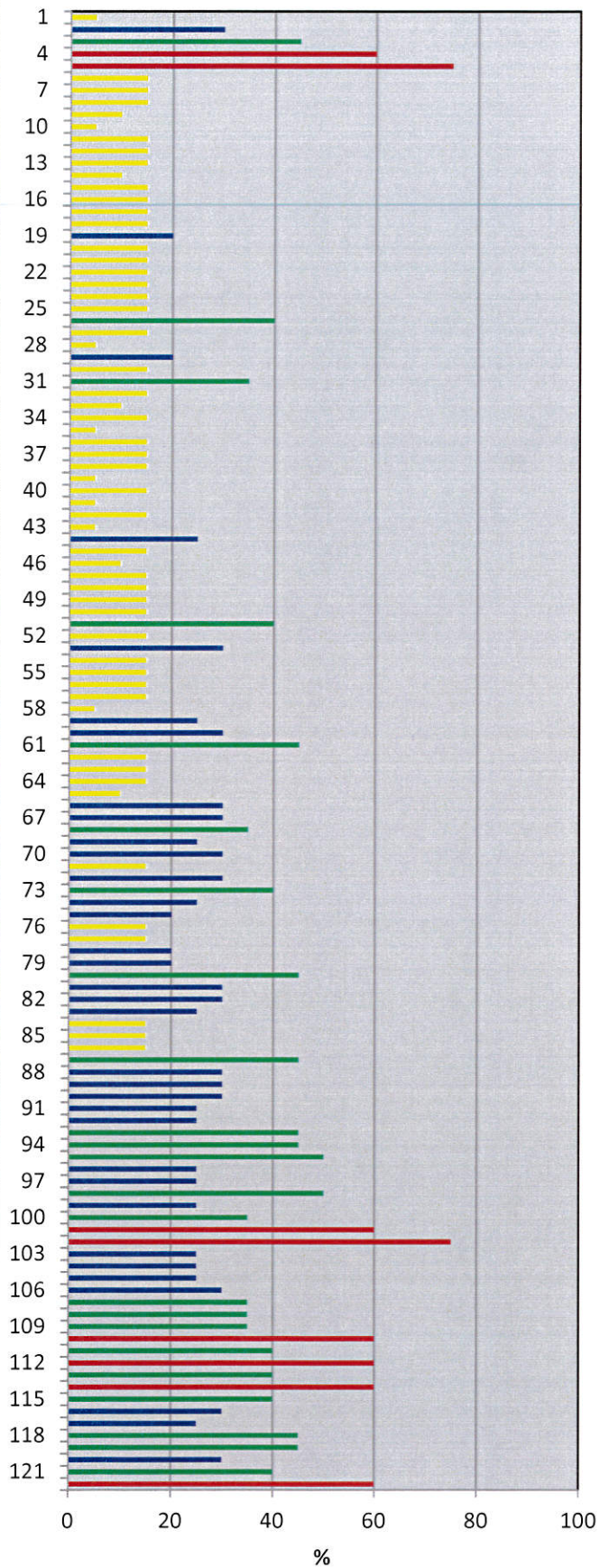
Jt#	Wall Loss	Pitting	Damage
1	5	5	
1	Ultrasonic Wall Min: 0.204 Max: 0.225		
2	10	30	Wall Loss & Pitting
3	5	45	Pitting
4	15	60	Wall Loss & Pitting
5	10	75	Wall Loss & Pitting
6	5	15	Pitting
7	5	15	Pitting
8	5	15	Pitting
9	5	10	Pitting
10	5	5	
11	5	15	Pitting
12	5	15	Pitting
13	5	15	Pitting
14	5	10	Pitting
15	5	15	Pitting
16	5	15	Pitting
17	10	15	Wall Loss & Pitting
18	10	15	Wall Loss & Pitting
19	15	20	Wall Loss & Pitting
20	10	15	Wall Loss & Pitting
21	5	15	Pitting
22	5	15	Pitting
23	5	15	Pitting
24	5	15	Pitting
25	5	15	Pitting
26	5	40	Pitting
27	5	15	Pitting
28	5	5	
29	5	20	Pitting
30	5	15	Pitting
31	5	35	Pitting
32	5	15	Pitting
33	5	10	Pitting
34	5	15	Pitting
35	5	5	
36	5	15	Pitting
37	5	15	Pitting
38	5	15	Pitting
39	5	5	
40	5	15	Pitting
41	5	5	
42	5	15	Pitting
43	5	5	
44	5	25	Pitting
45	5	15	Pitting
46	5	10	Pitting
47	5	15	Pitting
48	5	15	Pitting
49	5	15	Pitting
50	5	15	Pitting

Jt#	Wall Loss	Pitting	Damage
51	30	40	Wall Loss & Pitting
52	5	15	Pitting
52	Ultrasonic Wall Min: 0.218 Max: 0.227		
53	5	30	Pitting
54	5	15	Pitting
55	5	15	Pitting
56	5	15	Pitting
57	5	15	Pitting
58	5	5	
59	5	25	Pitting
60	5	30	Pitting
61	25	45	Wall Loss & Pitting
62	5	15	Pitting
63	5	15	Pitting
64	5	15	Pitting
65	5	10	Pitting
66	5	30	Pitting
67	5	30	Pitting
68	5	35	Pitting
69	5	25	Pitting
70	5	30	Pitting
71	5	15	Pitting
72	5	30	Pitting
73	5	40	Pitting
74	5	25	Pitting
75	5	20	Pitting
76	5	15	Pitting
77	5	15	Pitting
78	5	20	Pitting
79	5	20	Pitting
80	5	45	Pitting
81	5	30	Pitting
82	5	30	Pitting
83	5	25	Pitting
84	5	15	Pitting
85	5	15	Pitting
86	5	15	Pitting
87	5	45	Pitting
88	5	30	Pitting
89	10	30	Wall Loss & Pitting
90	5	30	Pitting
91	5	25	Pitting
92	10	25	Wall Loss & Pitting
93	10	45	Wall Loss & Pitting
94	5	45	Pitting
95	5	50	Pitting
96	5	25	Pitting
97	5	25	Pitting
98	5	50	Pitting
99	5	25	Pitting
100	5	35	Pitting

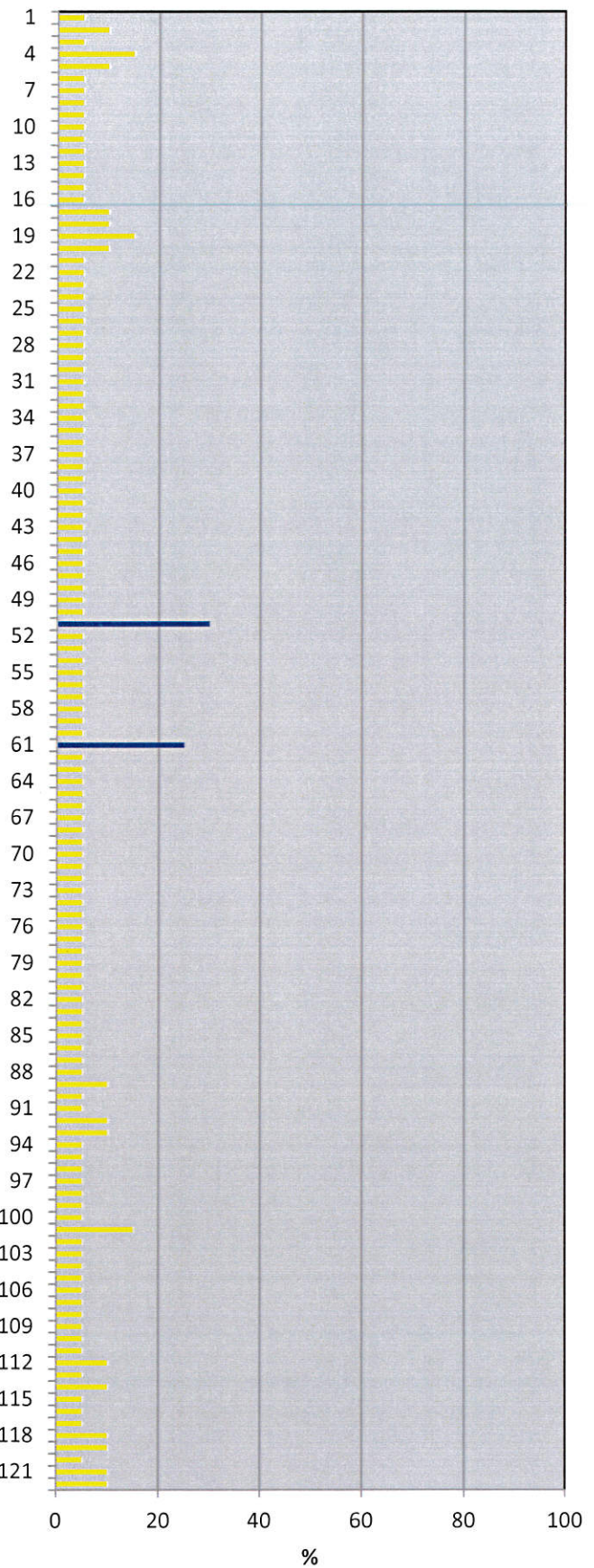
Jt#	Wall Loss	Pitting	Damage
101	15	60	Wall Loss & Pitting
102	5	75	Pitting
103	5	25	Pitting
104	5	25	Pitting
104	Ultrasonic Wall Min: 0.200 Max: 0.220		
105	5	25	Pitting
106	5	30	Pitting
107	5	35	Pitting
108	5	35	Pitting
109	5	35	Pitting
110	5	60	Pitting
111	5	40	Pitting
112	10	60	Wall Loss & Pitting
113	5	40	Pitting
114	10	60	Wall Loss & Pitting
115	5	40	Pitting
116	5	30	Pitting
117	5	25	Pitting
118	10	45	Wall Loss & Pitting
119	10	45	Wall Loss & Pitting
120	5	30	Pitting
121	10	40	Wall Loss & Pitting
122	10	60	Mechanical Hole



### Pitting 1 to 122

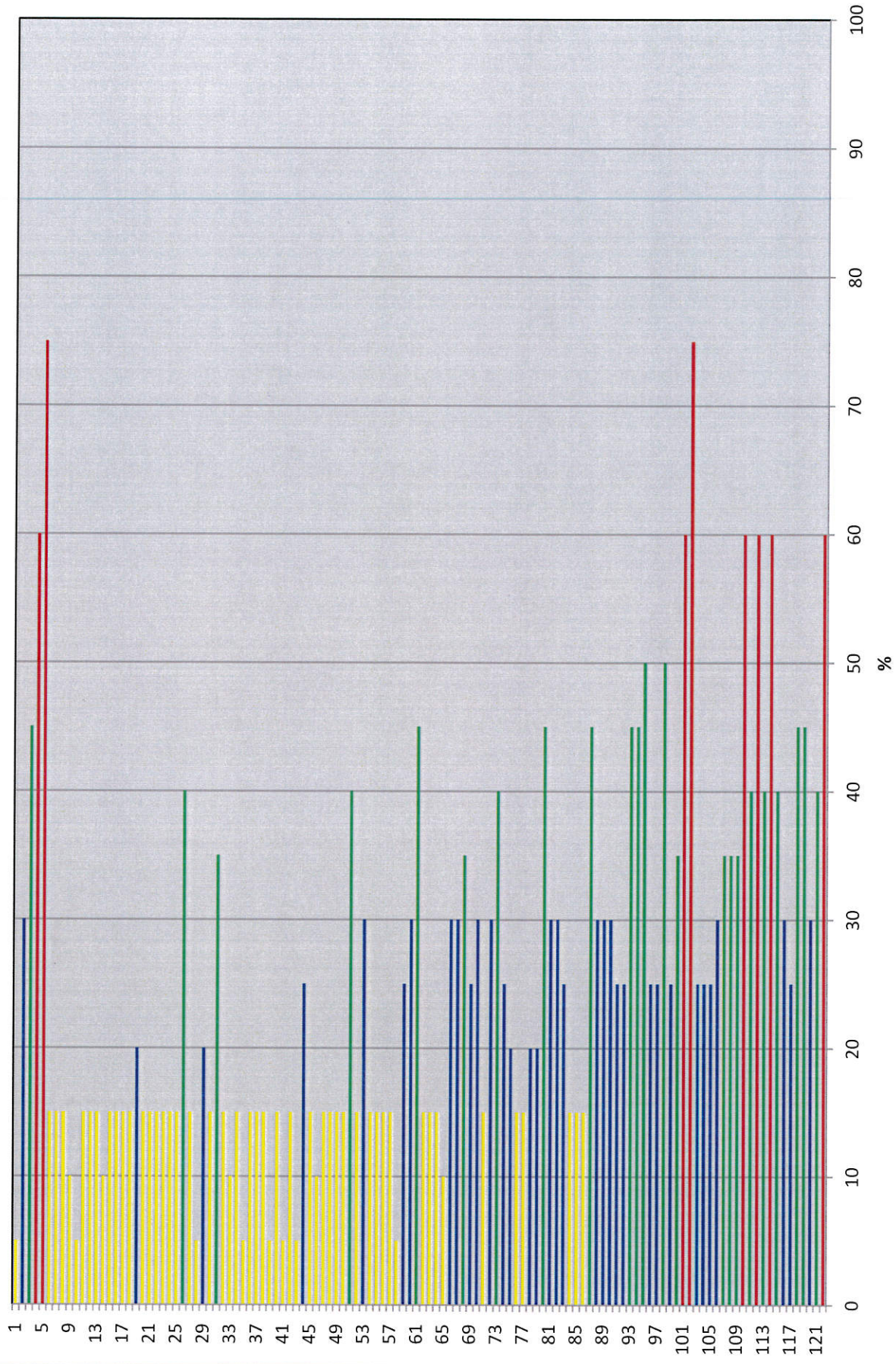


### Wall Loss 1 to 122



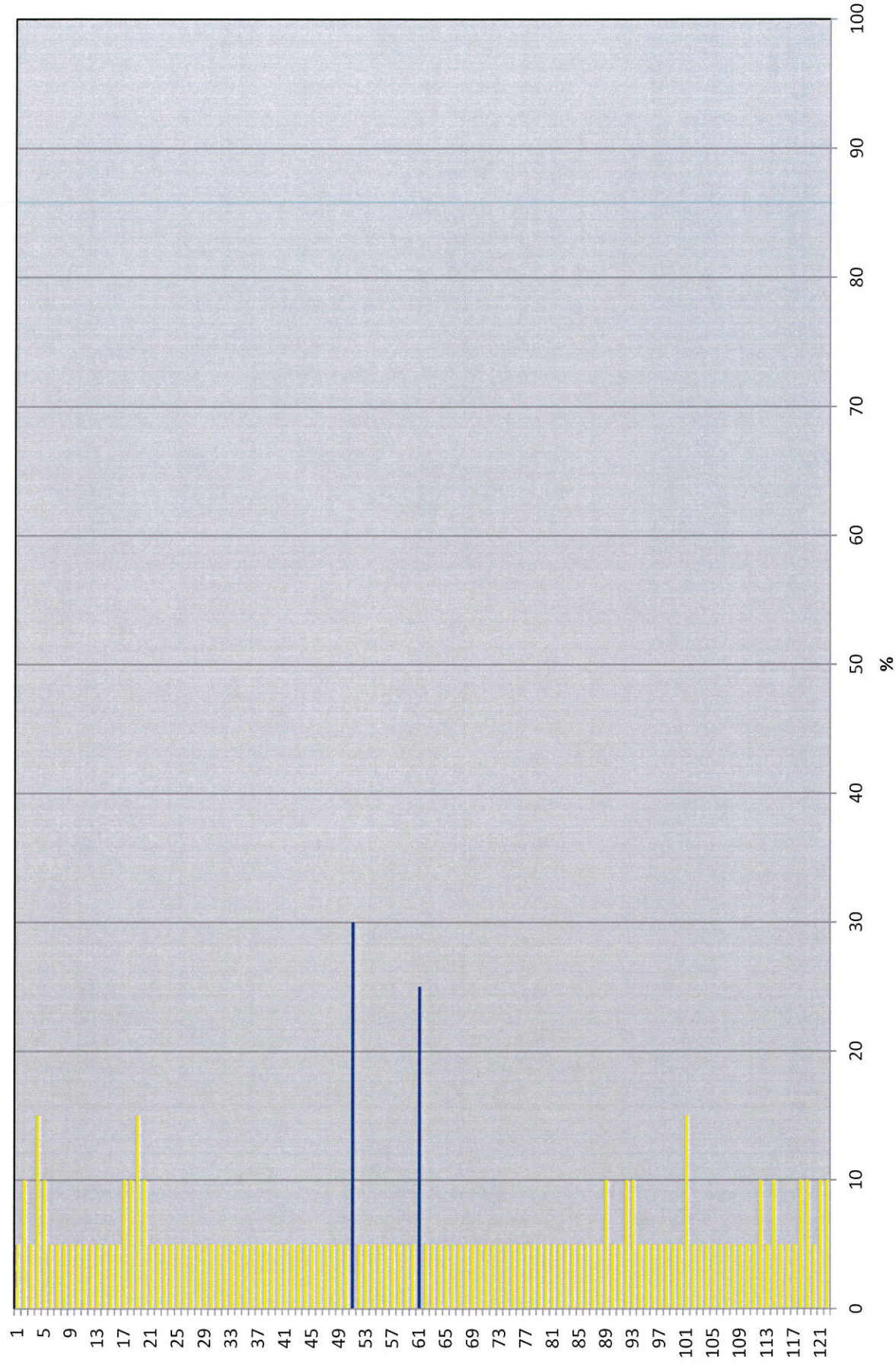


# Pitting 1 to 122





## Wall Loss 1 to 122







Tel1: (780) 841-8106

Page 1 of 1





Tel1: (780) 841-8106

Remarks:Total: 12

Reservoir Fluids Summary	Reset <input type="checkbox"/> Gas:	Daily:	10 <sup>3</sup> m <sup>3</sup> /d	Cum:	0 10 <sup>3</sup> m <sup>3</sup>	Tubing volume:		m <sup>3</sup>			
	Cums <input type="checkbox"/> Oil or Condensate:	Daily:	m <sup>3</sup>	Cum:	0 m <sup>3</sup>	Csg. ann vol:		m <sup>3</sup>			
	<input type="checkbox"/> Water:	Daily:	m <sup>3</sup>	Cum:	0 m <sup>3</sup>	Open hole vol:		m <sup>3</sup>			
	Time Swabbed/Flowed:	Daily:	0.00 hrs	Cum:	hrs	Total:		0 m <sup>3</sup>			
Load Fluids	Reset <input type="checkbox"/> OIL	Used	m <sup>3</sup>	Cum	0 m <sup>3</sup>	Rec	m <sup>3</sup>	Cum	0 m <sup>3</sup>	To Rec	0 m <sup>3</sup>
	Cums <input type="checkbox"/> WATER	Used	m <sup>3</sup>	Cum	0 m <sup>3</sup>	Rec	m <sup>3</sup>	Cum	0 m <sup>3</sup>	To Rec	0 m <sup>3</sup>
	<input type="checkbox"/> OTHER	Used	m <sup>3</sup>	Cum	0 m <sup>3</sup>	Rec	m <sup>3</sup>	Cum	0 m <sup>3</sup>	To Rec	0 m <sup>3</sup>
Hours	Service Rig Hours	Daily	12.00 hrs	Cumulative	12.00 hrs	DownTime:	hrs	Cumulative DownTime:	hrs		
	Personnel on Location	Rig:	6	Service:	7	Company:	1	Total Personnel:	14		
	Weather: Clear	Temp	-33 °C	Lease:	Good	Roads: Good					
Manager:				Programmed By:							



Tel2:  
Tel1: (780) 830-8303

Page 1 of 1