

**Strategic Oil & Gas Ltd.**  
**Final Well Operations Report**  
**Strategic et al Cameron H-03**  
**Well ID – 1940**  
**300/H03601011730/0**

- Feb 9, 2019 :** Inject 500 liters of methanol into pig sender. Cleaning pig stuck on second cleaning run. Pushed pig back to well. Thaw frozen piping. Inject 500 liters of wax inhibitor. Three cleaning runs done. Performed batch run with 30 liters of inhibitor ( 1 part CRO9809 and 2 parts diesel ). Installed spec blind on pipeline at H-03. Flare volume was 0.023 e3m3 in 10 minutes.
- Feb 25, 2019 :** No activity.
- Mar 1, 2019 :** MIRU Global #9. Performed SCVF test for 15 minutes. No bubbles. Attempt to unseat BHP. Rods appear to be parted. Install rod BOP's. Bleed off casing gas head to testers ( 2.061 e3m3 in 2 hours ). Pull and stand rods. 13<sup>th</sup> 19.1 mm rod was parted. RIH with overshot. Latch onto parted rod and unseat BHP. Pumped 4.0 m3 fresh water down tubing.
- Mar 2, 2019 :** Pull and lay down rods and BHP. Pumped 25.0 m3 fresh water down casing. Installed and pressure tested BOP's. Unset anchor. Pull and lay down tubing. Inspect on the way out of the hole ( yellow – 28, blue – 21, green – 21 and red – 81 ).
- Mar 3, 2019 :** MURIH with 158.75 mm rare earth magnet. Tag top of fish and POOH. No recovery. MURIH with fishing tools ( 60.33 mm grapple ). Tagged fish at 1508.7 mKB. Worked fishing tools and POOH. No recovery.
- Mar 4, 2019 :** MURIH with fishing tools ( 50.8 mm grapple ). Tagged fish at 1508.7 mKB. Worked fishing tools and POOH. Recovered fish. Well started venting gas. Pumped 20.0 m3 fresh water down casing. RIH with 177.8 mm 10K permanent bridge plug to 1513.0 mKB. Filled tubing with 4.5 m3 fresh water and pressured up to 15000 kPa to set bridge plug. Rotated off of BP. Pull up one joint and set packer. Filled tubing with 0.4 m3 fresh water and pressure test bridge plug to 7000 kPa for 10 minutes. Solid test. Unset packer.
- Mar 5, 2019 :** POOH with tubing and packer. RIH with tubing open ended and tag bridge plug at 1513.0 mKB. Topped up well with 3.0 m3 fresh water. Mixed 0.5 m3 of 1900 kg/m3 cement. Circulated down tubing followed by 4.3 m3 fresh water. Pulled up three joints and reverse circulated 6.0 m3 fresh water. 40 liters cement in returns. Cement top at 1492.7 mKB. Circulate 5.0 m3 inhibited fresh water ( 0.5% CRW-132 ) down tubing. POOH and lay down 12 joints tubing.

**Mar 6, 2019 :** RIH with 177.8 mm 10K permanent bridge plug to 1401.0 mKB. Filled tubing with 4.2 m3 fresh water and pressured up to 14000 kPa to set bridge plug. Rotated off of BP. Topped up well with 1.5 m3 fresh water. Pressure test bridge plug to 7000 kPa for ten minutes. Solid test. Mixed 0.5 m3 of 1900 kg/m3 cement. Circulated down tubing followed by 4.0 m3 fresh water. Pulled up three joints and reverse circulated 28.0 m3 inhibited fresh water ( 0.5% CRW-132 ). 50 liters cement in returns. Cement top at 1379.9 mKB. Pull and lay down tubing. Topped up casing with 1.6 m3 50/50 inhibited methanol water.

**Mar 7, 2019:** Remove BOP's, install wellhead and rig out.

*Ken Miller*  
*March 28, 2019*

## WELL TERMINATION RECORD

**INSTRUCTIONS:**

1. Complete both pages.
2. Send one electronic copy of this form and supporting technical documentation by email to [orogo@gov.nt.ca](mailto:orogo@gov.nt.ca).
3. Send two signed hard copies of this form and supporting technical documentation by courier to:  
 Chief Conservation Officer  
 Office of the Regulator of Oil and Gas Operations  
 4th floor Northwest Tower  
 5201 50th Avenue  
 Yellowknife NT X1A 3S9

**WELL INFORMATION**

|                 |  |                     |                             |
|-----------------|--|---------------------|-----------------------------|
| Well Name       | Strategic et al Cameron H-03               | Operator            | Strategic Oil & Gas Ltd.    |
| Well Type       | Development Well (if Other, specify _____) | Contractor          | Global Well Servicing Rig 9 |
| Well Identifier | 1940                                       | Current Well Status | Suspended                   |

**RELATED LICENCES AND AUTHORIZATIONS**

|                       |                        |                                     |                |
|-----------------------|------------------------|-------------------------------------|----------------|
| Operating Licence No. | NWT-OL-2014-007        | Operations Authorization            | OA - 1237-001  |
| PRA Licence No.       | Production Licence 017 | Approval to Alter Condition of Well | ACW - 2019-001 |

**LOCATION INFORMATION**

**Coordinates** Datum: NAD27 (if Other, please specify \_\_\_\_\_)

|             |                   |                     |
|-------------|-------------------|---------------------|
| Surface     | Lat 60 ° 2 ' 23 " | Long 117 ° 30 ' 7 " |
| Bottom Hole | Lat 60 ° 2 ' 23 " | Long 117 ° 30 ' 7 " |

Region: Dehcho Unit H Section 3 Grid 60-10 117-30

**ACTIVITY INFORMATION**

|                     |                  |                         |             |
|---------------------|------------------|-------------------------|-------------|
| Target Formation(s) | Sulphur Point    | Field/Pool(s)           | /           |
| Elevation KB/RT     | 769.0 m          | Ground Level / Seafloor | 764.5 m     |
| Spud/Re-entry Date  | Feb 9, 2019 days | Total Depth             | 1662.4 m KB |
| Rig Release Date    | Mar 7, 2019      | Total Vertical Depth    | 1662.4 m KB |

**CASING AND CEMENTING PROGRAM**

| O.D. (mm) | Weight (kg/m) | Grade | Setting Depth (m KB) | Cementing (m³) |
|-----------|---------------|-------|----------------------|----------------|
| 244.5     | 53.58         | J-55  | 423.0                | 38.0 tonnes    |
| 177.8     | 34.23         | J-55  | 1662.0               | 32.7 tonnes    |
|           |               |       |                      |                |
|           |               |       |                      |                |

**PLUGGING PROGRAM**

| Type of Plug | Interval (m KB) | Felt   | Setting Depth (m KB) | Cementing (m <sup>3</sup> ) |
|--------------|-----------------|--------|----------------------|-----------------------------|
| Bridge       | 1492.7-1513.0   | No     | 1513.0               | 0.5                         |
| Bridge       | 1379.7-1401.0   | No     | 1401.0               | 0.5                         |
| Select       | -               | Select |                      |                             |
| Select       | -               | Select |                      |                             |

**PERFORATION**

| Interval (m KB) | Comments                       |
|-----------------|--------------------------------|
| 1526-0-1545.0   | Keg River - abandoned zone     |
| 1415.0-1426.0   | Sulphur Point - abandoned zone |
| -               |                                |
| -               |                                |

**OTHER**

|   |                               |
|---|-------------------------------|
| Lost Circulation/Overpressure Zones                 |                               |
| Equipment Left on Site (Describe)                   | Oil well production equipment |
| Provision for Re-entry (Describe and attach sketch) |                               |
| Other Downhole Completion/Suspension                |                               |
| Additional Comments                                 |                               |

**"I certify that the information provided on this form is true and correct"**

|           |   |        |                       |
|-----------|---|--------|-----------------------|
| Name      | Ken Nikiforuk   | Phone  | (403) 767-2944 Ext    |
| Title     | Completions Manager   | E-Mail | knikiforuk@sogoil.com |
| Operator  | Strategic Oil & Gas Ltd   |        |                       |
| Signature | <br>Responsible Officer of Company | Date   | March 28, 2019        |

**OROGO use only**
 Unique Well Identifier 30 /        -        -        /         
 (eg. 300 / A01 60-00 120-00 / 0)



## Daily Abandonment Report

Operator: Strategic Oil & Gas Ltd.

Reporting To: Ken Nikiforuk

Consultant: Shayne Stahl2000

Tel2:

Tel1:

|   |          |          |                            |                                     |            |                             |      |                            |                           |                     |      |
|---|----------|----------|----------------------------|-------------------------------------|------------|-----------------------------|------|----------------------------|---------------------------|---------------------|------|
| UWI: 300H036010117300   |          |          |                            | WELL: Strategic Cameron Hills Plant |            |                             |      | DATE: 07-Mar-2019          |                           |                     |      |
| 24 Hr Summary: Removed BOPs and installed wellhead, rigged out equipment. |          |          |                            |                                     |            |                             |      | END: 08-Mar-2019           |                           |                     |      |
| Formation: Sulphur Point  |          |          |                            | Surf Loc: H-03 60-10N 117-30W       |            |                             |      | Licence: 1940              |                           | Day #: 9            |      |
| Objective: Abandon Keg River and Sulp                                     |          |          | Abandonment Type: Downhole |                                     |            | Serv Rig Start: 01-Mar-2019 |      |                            | Serv Rig End: 07-Mar-2019 |                     |      |
| Operations at 6:00: Move to C-19.   |          |          |                            |                                     |            | AFE #: 19ABCAM003           |      | AFE Estimate: \$192,032.00 |                           |                     |      |
| Daily Cost:   |          | \$20,959 |                            | Previous Cumulative Cost:           |            |                             |      | \$170,077                  |                           | Cum Cost: \$191,036 |      |
| Ground:   | 764.50   | m        | KB To TH                   | m                                   | Open Hole: | mKB                         |      | Date                       | Perf Formation            | Top                 | Base |
| KB to Grd:  | 4.50     | m        | Tubing:                    | 73                                  | mm         | Bot at:                     | m    |                            |                           |                     |      |
| TD (MD):  | 1,662.40 | m        | Casing:                    | 177.8                               | mm         | Set at:                     | 1662 | m                          |                           |                     |      |
| PBTD:   | 1,647.70 | m        | Liner:                     |                                     | mm         | Top at:                     | m    |                            |                           |                     |      |
| BOP Drill:  |          |          | BOP Press Test:            |                                     |            | Function Test: yes          |      |                            |                           |                     |      |
| SITP:   | N/A      | kPa      | SICP:                      | 0                                   | kPa        | SCV:                        | kPa  | H <sub>2</sub> S           | %                         |                     |      |

Remarks:

[illegible]

|        |    |
|--------|----|
| Total: | 10 |
|--------|----|

Equipment on Location:

|                          |  |        |                                   |                |                                      |                |                |                      |                  |        |                     |
|--------------------------|--|--------|-----------------------------------|----------------|--------------------------------------|----------------|----------------|----------------------|------------------|--------|---------------------|
| Reservoir Fluids Summary | Reset <input type="checkbox"/> Gas:              | Daily: | 10 <sup>3</sup> m <sup>3</sup> /d | Cum:           | 2.061 10 <sup>3</sup> m <sup>3</sup> | Tubing volume: |                | m <sup>3</sup>       |                  |        |                     |
|                          | Cums <input type="checkbox"/> Oil or Condensate: | Daily: | m <sup>3</sup>                    | Cum:           | 0 m <sup>3</sup>                     | Csg. ann vol:  |                | m <sup>3</sup>       |                  |        |                     |
|                          | <input type="checkbox"/> Water:                  | Daily: | m <sup>3</sup>                    | Cum:           | 0 m <sup>3</sup>                     | Open hole vol: |                | m <sup>3</sup>       |                  |        |                     |
|                          | Time Swabbed/Flowed:                             |        | Daily:                            | 0.00 hrs       | Cum:                                 | hrs            | Total:         |                      | 0 m <sup>3</sup> |        |                     |
| Load Fluids              | Reset <input type="checkbox"/> OIL               | Used   | m <sup>3</sup>                    | Cum            | 0 m <sup>3</sup>                     | Rec            | m <sup>3</sup> | Cum                  | 0 m <sup>3</sup> | To Rec | 0 m <sup>3</sup>    |
|                          | Cums <input type="checkbox"/> WATER              | Used   | m <sup>3</sup>                    | Cum            | 61.7 m <sup>3</sup>                  | Rec            | m <sup>3</sup> | Cum                  | 0 m <sup>3</sup> | To Rec | 61.7 m <sup>3</sup> |
|                          | <input type="checkbox"/> OTHER                   | Used   | m <sup>3</sup>                    | Cum            | 0 m <sup>3</sup>                     | Rec            | m <sup>3</sup> | Cum                  | 0 m <sup>3</sup> | To Rec | 0 m <sup>3</sup>    |
| Hours                    | Service Rig Hours                                | Daily  | 10.00 hrs                         | Cumulative     | 80.00 hrs                            | DownTime:      | hrs            | Cumulative DownTime: | hrs              |        |                     |
|                          | Personnel on Location                            | Rig:   | 6                                 | Service:       | 6                                    | Company:       | 1              | Total Personnel:     | 13               |        |                     |
|                          | Weather: Clear                                   | Temp   | -14 °C                            | Lease:         | Good                                 |                |                |                      | Roads:           | Good   |                     |
| Manager:                 |  |        |                                   | Programmed By: |                                      |                |                |                      |                  |        |                     |

Operator: Strategic Oil &amp; Gas Ltd.

Reporting To: Ken Nikiforuk

Consultant: Shayne Stahl

Tel2:

Tel1: (780) 841-8106

|  |            |                                     |          |                             |        |
|--|------------|-------------------------------------|----------|-----------------------------|--------|
| UWI: 300H036010117300  |            | WELL: Strategic Cameron Hills Plant |          | DATE: 06-Mar-2019           |        |
| 24 Hr Summary: RIH with PBP, set at 1401 mKB, tested to 7, circ cement on BP, inhibited well |            |                                     |          |                             |        |
| Formation: Sulphur Point   |            | Surf Loc: H-03 60-10N 117-30W       |          | Licence: 1940               |        |
| Objective: Abandon Keg River and Sulp  |            | Abandonment Type: Downhole          |          | Serv Rig Start: 01-Mar-2019 |        |
| Operations at 6:00:  |            | AFE #: 19ABCAM003                   |          | AFE Estimate: \$192,032.00  |        |
| Daily Cost: \$35,590   |            | Previous Cumulative Cost: \$134,487 |          | Cum Cost: \$170,077         |        |
| Ground:  | 764.50 m   | KB To TH:                           | m        | Open Hole:                  | mKB    |
| KB to Grd:   | 4.50 m     | Tubing:                             | 73 mm    | Bot at:                     | m      |
| TD (MD):   | 1,662.40 m | Casing:                             | 177.8 mm | Set at:                     | 1662 m |
| PBTD:  | 1,647.70 m | Liner:                              | mm       | Top at:                     | m      |
| BOP Drill:   |            | BOP Press Test:                     |          | Function Test: yes          |        |
| SITP:  | N/A kPa    | SICP:                               | 0 kPa    | SCV:                        | kPa    |
|  |            |                                     |          | H <sub>2</sub> S            | %      |

Remarks:

| Time From | Time To | Hours | Code   | Comments  |
|-----------|---------|-------|--------|---|
| 07:00     | 07:30   | 0.5   | SAFE   | Conducted crew safety and operations meeting. Swept lease for LEL's and H <sub>2</sub> S. Function tested crown saver, air kills, blind rams, 73.0mm pipe rams and annular. |
| 07:30     | 11:30   | 4     | TRPTBG | Made up Tryton 177.8mm PBP, RIH with BP, setting tool and 146 - jts 73.0mm tbg. Added one space out pup and positioned BP at 1401.0 mKB corrected depth.                    |
|           |         |       |        | Filled tbg with 4.20 m <sup>3</sup> fresh water, pressured up to 14,000 kpa and set BP, pulled 14,000 daN over string to pack off elements. Rotated off of BP.              |
| 11:30     | 12:45   | 1.25  | PTST   | Circulated down tbg and up csg. Filled hole with 1.50 m <sup>3</sup> fresh water.   |
|           |         |       |        | Started pressure test at 11:50 hrs, ended test at 12:35, final test was 7182 kpa to 7151 kpa in 10 mins, 31 kpa loss in 10 mins.  |
| 12:45     | 14:15   | 1.5   | CIRC   | Mixed up 500 liters 0.1:0 Class "G" 1900 kg/m <sup>3</sup> cement + 0.2% retarder, poured cement down tbg and displaced to top of BP with 4.0 m <sup>3</sup> fresh water.   |
| 14:15     | 15:30   | 1.25  | CIRC   | Pulled 3 - jts tbg, reverse circulated well to 0.50% CRW-132 inhibited fresh water with 28.0 m <sup>3</sup> , recovered 50 liters cement and dirty water.                   |
|           |         |       |        | Calculated cement top at 1379.70 mKB, based on 0.020535 m <sup>3</sup> /m in 34.23 kg/m 177.8mm csg.  |
| 15:30     | 18:30   | 3     | TRPTBG | POOH and laid down tbg. Topped well up with 1.60 m <sup>3</sup> 50/50 methanol water.   |
|           |         |       |        | Secured well, drained pump and lines, SDFN.   |

Total: 11.5

Equipment on Location:

|                          |  |                |                                   |            |                                      |                  |                  |
|--------------------------|--|----------------|-----------------------------------|------------|--------------------------------------|------------------|------------------|
| Reservoir Fluids Summary | Reset <input type="checkbox"/> Gas:              | Daily:         | 10 <sup>3</sup> m <sup>3</sup> /d | Cum:       | 2.061 10 <sup>3</sup> m <sup>3</sup> | Tubing volume:   | m <sup>3</sup>   |
|                          | Cums <input type="checkbox"/> Oil or Condensate: | Daily:         | m <sup>3</sup>                    | Cum:       | 0 m <sup>3</sup>                     | Csg. ann vol:    | m <sup>3</sup>   |
|                          | <input type="checkbox"/> Water:                  | Daily:         | m <sup>3</sup>                    | Cum:       | 0 m <sup>3</sup>                     | Open hole vol:   | m <sup>3</sup>   |
|                          | Time Swabbed/Flowed:                             | Daily:         | 0.00 hrs                          | Cum:       | hrs                                  | Total:           | 0 m <sup>3</sup> |
| Load Fluids              | Reset <input type="checkbox"/> OIL               | Used           | m <sup>3</sup>                    | Cum        | 0 m <sup>3</sup>                     | Rec              | m <sup>3</sup>   |
|                          | Cums <input type="checkbox"/> WATER              | Used           | 7.3 m <sup>3</sup>                | Cum        | 61.7 m <sup>3</sup>                  | Rec              | m <sup>3</sup>   |
|                          | <input type="checkbox"/> OTHER                   | Used           | m <sup>3</sup>                    | Cum        | 0 m <sup>3</sup>                     | Rec              | m <sup>3</sup>   |
| Hours                    | Service Rig Hours                                | Daily          | 11.50 hrs                         | Cumulative | 70.00 hrs                            | DownTime:        | hrs              |
|                          | Personnel on Location                            | Rig:           | 6                                 | Service:   | 4                                    | Company:         | 1                |
|                          | Weather: Clear                                   | Temp           | -17 °C                            | Lease:     | Good                                 | Total Personnel: | 11               |
| Manager:                 |  | Programmed By: |                                   |            |                                      |                  |                  |



Tel2:  
Tel1: (780) 841-8106

[illegible]

|        |    |
|--------|----|
| Total: | 12 |
|--------|----|

|                          |  |        |                                   |                |                                      |                |                |                      |                  |        |                     |
|--------------------------|--|--------|-----------------------------------|----------------|--------------------------------------|----------------|----------------|----------------------|------------------|--------|---------------------|
| Reservoir Fluids Summary | Reset <input type="checkbox"/> Gas:              | Daily: | 10 <sup>3</sup> m <sup>3</sup> /d | Cum:           | 2.061 10 <sup>3</sup> m <sup>3</sup> | Tubing volume: |                | m <sup>3</sup>       |                  |        |                     |
|                          | Cums <input type="checkbox"/> Oil or Condensate: | Daily: | m <sup>3</sup>                    | Cum:           | 0 m <sup>3</sup>                     | Csg. ann vol:  |                | m <sup>3</sup>       |                  |        |                     |
|                          | <input type="checkbox"/> Water:                  | Daily: | m <sup>3</sup>                    | Cum:           | 0 m <sup>3</sup>                     | Open hole vol: |                | m <sup>3</sup>       |                  |        |                     |
|                          | Time Swabbed/Flowed:                             | Daily: | 0.00 hrs                          | Cum:           | hrs                                  | Total:         |                | 0 m <sup>3</sup>     |                  |        |                     |
| Load Fluids              | Reset <input type="checkbox"/> OIL               | Used   | m <sup>3</sup>                    | Cum            | 0 m <sup>3</sup>                     | Rec            | m <sup>3</sup> | Cum                  | 0 m <sup>3</sup> | To Rec | 0 m <sup>3</sup>    |
|                          | Cums <input type="checkbox"/> WATER              | Used   | 5 m <sup>3</sup>                  | Cum            | 54.4 m <sup>3</sup>                  | Rec            | m <sup>3</sup> | Cum                  | 0 m <sup>3</sup> | To Rec | 54.4 m <sup>3</sup> |
|                          | <input type="checkbox"/> OTHER                   | Used   | m <sup>3</sup>                    | Cum            | 0 m <sup>3</sup>                     | Rec            | m <sup>3</sup> | Cum                  | 0 m <sup>3</sup> | To Rec | 0 m <sup>3</sup>    |
| Hours                    | Service Rig Hours                                | Daily  | 12.00 hrs                         | Cumulative     | 58.50 hrs                            | DownTime:      | hrs            | Cumulative DownTime: | hrs              |        |                     |
|                          | Personnel on Location                            | Rig:   | 6                                 | Service:       | 5                                    | Company:       | 1              | Total Personnel:     | 12               |        |                     |
|                          | Weather: Snow                                    | Temp   | -17 °C                            | Lease:         | Good                                 |                |                | Roads:               | Good             |        |                     |
| Manager:                 |  |        |                                   | Programmed By: |                                      |                |                |                      |                  |        |                     |



Tel2:  
Tel1: (780) 841-8106

|          |  |  |  |  |  |  |  |  |  |
|----------|--|--|--|--|--|--|--|--|--|
| Remarks: |  |  |  |  |  |  |  |  |  |
|----------|--|--|--|--|--|--|--|--|--|

|        |    |
|--------|----|
| Total: | 12 |
|--------|----|

|                          |  |        |                                   |                |                                      |                |                |                      |                  |        |                     |
|--------------------------|--|--------|-----------------------------------|----------------|--------------------------------------|----------------|----------------|----------------------|------------------|--------|---------------------|
| Reservoir Fluids Summary | Reset <input type="checkbox"/> Gas:              | Daily: | 10 <sup>3</sup> m <sup>3</sup> /d | Cum:           | 2.061 10 <sup>3</sup> m <sup>3</sup> | Tubing volume: |                | m <sup>3</sup>       |                  |        |                     |
|                          | Cums <input type="checkbox"/> Oil or Condensate: | Daily: | m <sup>3</sup>                    | Cum:           | 0 m <sup>3</sup>                     | Csg. ann vol:  |                | m <sup>3</sup>       |                  |        |                     |
|                          | <input type="checkbox"/> Water:                  | Daily: | m <sup>3</sup>                    | Cum:           | 0 m <sup>3</sup>                     | Open hole vol: |                | m <sup>3</sup>       |                  |        |                     |
|                          | Time Swabbed/Flowed:                             | Daily: | 0.00 hrs                          | Cum:           | hrs                                  | Total:         |                | 0 m <sup>3</sup>     |                  |        |                     |
| Load Fluids              | Reset <input type="checkbox"/> OIL               | Used   | m <sup>3</sup>                    | Cum            | 0 m <sup>3</sup>                     | Rec            | m <sup>3</sup> | Cum                  | 0 m <sup>3</sup> | To Rec | 0 m <sup>3</sup>    |
|                          | Cums <input type="checkbox"/> WATER              | Used   | 20.4 m <sup>3</sup>               | Cum            | 49.4 m <sup>3</sup>                  | Rec            | m <sup>3</sup> | Cum                  | 0 m <sup>3</sup> | To Rec | 49.4 m <sup>3</sup> |
|                          | <input type="checkbox"/> OTHER                   | Used   | m <sup>3</sup>                    | Cum            | 0 m <sup>3</sup>                     | Rec            | m <sup>3</sup> | Cum                  | 0 m <sup>3</sup> | To Rec | 0 m <sup>3</sup>    |
| Hours                    | Service Rig Hours                                | Daily  | 12.00 hrs                         | Cumulative     | 46.50 hrs                            | DownTime:      | hrs            | Cumulative DownTime: | hrs              |        |                     |
|                          | Personnel on Location                            | Rig:   | 6                                 | Service:       | 5                                    | Company:       | 1              | Total Personnel:     | 12               |        |                     |
|                          | Weather: Clear?Windy                             | Temp   | -18 °C                            | Lease:         | Good                                 |                |                |                      | Roads:           | Good   |                     |
| Manager:                 |  |        |                                   | Programmed By: |                                      |                |                |                      |                  |        |                     |





## Daily Abandonment Report

Operator: Strategic Oil & Gas Ltd.

Reporting To: Ken Nikiforuk

Consultant: Shayne Stahl

Tel2:

Tel1: (780) 841-8106

|   |          |                     |          |                                     |                    |                             |      |                            |     |          |  |
|---|----------|---------------------|----------|-------------------------------------|--------------------|-----------------------------|------|----------------------------|-----|----------|--|
| UWI: 300H036010117300   |          |                     |          | WELL: Strategic Cameron Hills Plant |                    |                             |      | DATE: 03-Mar-2019          |     |          |  |
| 24 Hr Summary: RIH with magnet on sandline, POOH, no fish, RIH with overshot on tbg, PO |          |                     |          |                                     |                    |                             |      | END: 08-Mar-2019           |     |          |  |
| Formation: Sulphur Point  |          |                     |          | Surf Loc: H-03 60-10N 117-30W       |                    |                             |      | Licence: 1940              |     | Day #: 5 |  |
| Objective: Abandon Keg River and Sulp   |          |                     |          | Abandonment Type: Downhole          |                    | Serv Rig Start: 01-Mar-2019 |      | Serv Rig End: 07-Mar-2019  |     |          |  |
| Operations at 6:00: RIH with smaller grapple.   |          |                     |          |                                     |                    | AFE #: 19ABCAM003           |      | AFE Estimate: \$192,032.00 |     |          |  |
| Daily Cost:   |          | \$19,939            |          | Previous Cumulative Cost:           |                    | \$62,813                    |      | Cum Cost:                  |     | \$82,752 |  |
| Ground:   | 764.50   | m                   | KB To TH | m                                   | Open Hole:         | mKB                         | Date | Perf Formation             | Top | Base     |  |
| KB to Grd:  | 4.50     | m                   | Tubing:  | 73 mm                               | Bot at:            | 1438.38 m                   |      |                            |     |          |  |
| TD (MD):  | 1,662.40 | m                   | Casing:  | 177.8 mm                            | Set at:            | 1662 m                      |      |                            |     |          |  |
| PBTD:   | 1,647.70 | m                   | Liner:   | mm                                  | Top at:            | m                           |      |                            |     |          |  |
| BOP Drill: yes  |          | BOP Press Test: yes |          |                                     | Function Test: yes |                             |      |                            |     |          |  |
| SITP:   | N/A      | kPa                 | SICP:    | 0                                   | kPa                | SCV:                        | kPa  | H <sub>2</sub> S           | %   |          |  |

Remarks:

[illegible]

|        |      |
|--------|------|
| Total: | 11.5 |
|--------|------|

Equipment on Location:

|                          |  |        |                                   |                |                                      |                |                  |                      |                  |        |                   |
|--------------------------|--|--------|-----------------------------------|----------------|--------------------------------------|----------------|------------------|----------------------|------------------|--------|-------------------|
| Reservoir Fluids Summary | Reset <input type="checkbox"/> Gas:              | Daily: | 10 <sup>3</sup> m <sup>3</sup> /d | Cum:           | 2.061 10 <sup>3</sup> m <sup>3</sup> | Tubing volume: | m <sup>3</sup>   |                      |                  |        |                   |
|                          | Cums <input type="checkbox"/> Oil or Condensate: | Daily: | m <sup>3</sup>                    | Cum:           | 0 m <sup>3</sup>                     | Csg. ann vol:  | m <sup>3</sup>   |                      |                  |        |                   |
|                          | <input type="checkbox"/> Water:                  | Daily: | m <sup>3</sup>                    | Cum:           | 0 m <sup>3</sup>                     | Open hole vol: | m <sup>3</sup>   |                      |                  |        |                   |
|                          | Time Swabbed/Flowed:                             | Daily: | 0.00 hrs                          | Cum:           | hrs                                  | Total:         | 0 m <sup>3</sup> |                      |                  |        |                   |
| Load Fluids              | Reset <input type="checkbox"/> OIL               | Used   | m <sup>3</sup>                    | Cum            | 0 m <sup>3</sup>                     | Rec            | m <sup>3</sup>   | Cum                  | 0 m <sup>3</sup> | To Rec | 0 m <sup>3</sup>  |
|                          | Cums <input type="checkbox"/> WATER              | Used   | m <sup>3</sup>                    | Cum            | 29 m <sup>3</sup>                    | Rec            | m <sup>3</sup>   | Cum                  | 0 m <sup>3</sup> | To Rec | 29 m <sup>3</sup> |
|                          | <input type="checkbox"/> OTHER                   | Used   | m <sup>3</sup>                    | Cum            | 0 m <sup>3</sup>                     | Rec            | m <sup>3</sup>   | Cum                  | 0 m <sup>3</sup> | To Rec | 0 m <sup>3</sup>  |
| Hours                    | Service Rig Hours                                | Daily  | 11.50 hrs                         | Cumulative     | 34.50 hrs                            | DownTime:      | hrs              | Cumulative DownTime: | hrs              |        |                   |
|                          | Personnel on Location                            | Rig:   | 6                                 | Service:       | 4                                    | Company:       | 1                | Total Personnel:     | 11               |        |                   |
|                          | Weather: Clear                                   | Temp   | -30 °C                            | Lease:         | Good                                 |                |                  |                      | Roads:           | Good   |                   |
| Manager:                 |  |        |                                   | Programmed By: |                                      |                |                  |                      |                  |        |                   |

Operator: Strategic Oil &amp; Gas Ltd.

Reporting To: Ken Nikiforuk

Consultant: Shayne Stahl

Tel2:  
Tel1: (780) 841-8106

|  |  |  |                                   |  |                                      |                |                  |
|--|--|--|-----------------------------------|--|--------------------------------------|----------------|------------------|
| <b>UWI: 300H036010117300</b>   |  | <b>WELL: Strategic Cameron Hills Plant</b> |                                   | <b>DATE: 02-Mar-2019</b>   |                                      |                |                  |
| 24 Hr Summary: Killed well, laid down rods and BHP, installed BOPs, POOH and inspected t |  |  |                                   |  | <b>END: 08-Mar-2019</b>              |                |                  |
| Formation: Sulphur Point   |  | Surf Loc: H-03 60-10N 117-30W              |                                   | Licence: 1940  | Day #: 4                             |                |                  |
| Objective: Abandon Keg River and Sulp  |  | Abandonment Type: Downhole                 |                                   | Serv Rig Start: 01-Mar-2019  | Serv Rig End: 07-Mar-2019            |                |                  |
| Operations at 6:00: RIH with magnet, attempt to recover BHP barrel.                      |  | AFE #: 19ABCAM003                          |                                   | AFE Estimate: \$192,032.00   |                                      |                |                  |
| Daily Cost: \$19,646   |  | Previous Cumulative Cost: \$43,167         |                                   | Cum Cost: \$62,813   |                                      |                |                  |
| Ground:  | 764.50 m   | KB To TH:                                  | m                                 | Open Hole:   | mKB                                  |                |                  |
| KB to Grd:   | 4.50 m   | Tubing:                                    | 73 mm                             | Bot at:  | 1438.38 m                            |                |                  |
| TD (MD):   | 1,662.40 m                                       | Casing:                                    | 177.8 mm                          | Set at:  | 1662 m                               |                |                  |
| PBTD:  | 1,647.70 m                                       | Liner:                                     | mm                                | Top at:  | m                                    |                |                  |
| BOP Drill: yes   |  | BOP Press Test: yes                        |                                   | Function Test: yes   |                                      |                |                  |
| SITP:  | 0 kPa  | SICP:                                      | 200 kPa                           | SCV:   | kPa H <sub>2</sub> S %               |                |                  |
| Remarks:   |  |  |                                   |  |                                      |                |                  |
|  |  |  |                                   |  |                                      |                |                  |
| Time From  | Time To  | Hours                                      | Code                              | Comments   |                                      |                |                  |
| 07:00  | 07:30  | 0.5  | SAFE                              | Conducted crew safety and operations meeting. Swept lease for LEL's and H <sub>2</sub> S. Function tested crown saver and air kills.   |                                      |                |                  |
| 07:30  | 11:00  | 3.5  | TRPROD                            | POOH and laid down rods, sinker bars and BHP.  |                                      |                |                  |
| 11:00  | 12:00  | 1  | KILL                              | Pumped 25.0 m <sup>3</sup> fresh water down csg.   |                                      |                |                  |
| 12:00  | 14:00  | 2  | BOPS                              | Function tested blind rams, 73.0mm pipe rams and annular. Stump tested blind rams, 73.0mm pipe rams, line pipe and 2 safety valves to 1.4 and 21.0 MPA, tested annular to 1.4 and 7.0 MPA, held tests for 10 mins. |                                      |                |                  |
|  |  |  |                                   | Had to replace ring gasket on lower work spool flange.   |                                      |                |                  |
|  |  |  |                                   | Removed wellhead and installed landing pup c/w safety valve. Picked up on tbg and installed 0.60m pup below tbg hanger.  |                                      |                |                  |
|  |  |  |                                   | Installed BOPs, tested ring gasket and 73.0mm pipe rams to 1.4 and 21.0 MPA for 10 mins each.  |                                      |                |                  |
| 14:00  | 15:00  | 1  | RIG                               | Rigged up working floor and power tongs, hung tarps.   |                                      |                |                  |
| 15:00  | 18:00  | 3  | TRPTBG                            | Removed tbg hanger, rigged up tbg inspectors.  |                                      |                |                  |
|  |  |  |                                   | POOH with 1 - jt 73.0mm tbg, 2 tbg pups, 146 - jts 73.0mm tbg, anchor, 3 - jts, psn, perforated pup, 1 - jt. Conducted blowout drill, 56 seconds for shut in.  |                                      |                |                  |
|  |  |  |                                   | 28 - yellow, 21 - blue, 21 - green, 81 - red.  |                                      |                |                  |
|  |  |  |                                   | Secured well, drained pump and lines, SDFN.  |                                      |                |                  |
| Total:   |  | 11   |                                   |  |                                      |                |                  |
| Equipment on Location:   |  |  |                                   |  |                                      |                |                  |
| Reservoir Fluids Summary   | Reset <input type="checkbox"/> Gas:              | Daily:                                     | 10 <sup>3</sup> m <sup>3</sup> /d | Cum:   | 2.061 10 <sup>3</sup> m <sup>3</sup> | Tubing volume: | m <sup>3</sup>   |
|  | Cums <input type="checkbox"/> Oil or Condensate: | Daily:                                     | m <sup>3</sup>                    | Cum:   | 0 m <sup>3</sup>                     | Csg. ann vol:  | m <sup>3</sup>   |
|  | <input type="checkbox"/> Water:                  | Daily:                                     | m <sup>3</sup>                    | Cum:   | 0 m <sup>3</sup>                     | Open hole vol: | m <sup>3</sup>   |
|  | Time Swabbed/Flowed:                             | Daily:                                     | 0.00 hrs                          | Cum:   | hrs                                  | Total:         | 0 m <sup>3</sup> |
| Load Fluids  | Reset <input type="checkbox"/> OIL               | Used                                       | m <sup>3</sup>                    | Cum  | 0 m <sup>3</sup>                     | Rec            | m <sup>3</sup>   |
|  | Cums <input type="checkbox"/> WATER              | Used                                       | 25 m <sup>3</sup>                 | Cum  | 29 m <sup>3</sup>                    | Rec            | m <sup>3</sup>   |
|  | <input type="checkbox"/> OTHER                   | Used                                       | m <sup>3</sup>                    | Cum  | 0 m <sup>3</sup>                     | Rec            | m <sup>3</sup>   |
| Hours  | Service Rig Hours                                | Daily                                      | 11.00 hrs                         | Cumulative   | 23.00 hrs                            | DownTime:      | hrs              |
|  | Personnel on Location                            | Rig:                                       | 6                                 | Service:   | 5                                    | Company:       | 1                |
|  | Weather: Clear                                   | Temp                                       | -33 °C                            | Lease:   | Good                                 | Roads:         | Good             |
| Manager:   |  | Programmed By:                             |                                   |  |                                      |                |                  |



114-172 Clearview Drive Red Deer County, AB T4E 0A1

Field Ticket  
Contact  
Phone

P83026

Chad Rookes

(780)512-5009

Customer Information

|                  |                         |          |                |
|------------------|-------------------------|----------|----------------|
| Company Name     | Strategic Oil & Gas Ltd | Date     | March 02, 2019 |
| Surface Location | H-03                    | AFE No.  |                |
| UWI              | H-03                    | Contract |                |
| Rig Name & #     | Global # 9              | Co. Rep  | Shayne Stahl   |
| Area             | Steen River             | Code #   |                |

Wellhead Tubing Inspection

| Qty | Description   | Unit Price | Total       |
|-----|---|------------|-------------|
| 147 | Joints of 73.0mm, 9.67Kg, J55, EUE Tubing Inspected | \$ 15.00   | \$ 2,205.00 |
| 430 | Kms From Base & Return                              | \$ 1.50    | \$ 645.00   |

| Ultra Sonic Measurements |          |          |
|--------------------------|----------|----------|
| Jt #                     | Wall Min | Wall Max |
| 1                        | 0.214    | 0.228    |
| 31                       | 0.190    | 0.225    |
| 101                      | 0.199    | 0.210    |

|         |       |
|---------|-------|
| Head    | 60H15 |
| Console | B0402 |
| T-MGN   | 100H  |
| R-WDS   | 250M  |

|               |             |
|---------------|-------------|
| Sub Total     | \$ 2,850.00 |
| 10% Discount  | \$ -285.00  |
| New Sub Total | \$ 2,565.00 |
| GST           | \$ 128.25   |
| Total         | \$ 2,693.25 |

|        |        |     |
|--------|--------|-----|
| 0-15%  | Yellow | 28  |
| 16-30% | Blue   | 21  |
| 31-50% | Green  | 21  |
| 51+%   | Red    | 81  |
| Total  |        | 151 |

| Order of Tubing Pulled |                         |
|------------------------|-------------------------|
| 1                      | 73mm Eue J55 Tubing     |
| 1                      | 73mm Eue J55 2.47m Pup  |
| 146                    | 73mm Eue J55 Tubing     |
| 1                      | Anchor                  |
| 3                      | 73mm Eue J55 Tubing     |
| 1                      | Pump Seating Nipple     |
| 1                      | 73mm Eue Perforated Pup |
| 1                      | 73mm Eue J55 Tubing     |
| 1                      | Re-Entry                |

| Notes   | Time Requested | 2:00 PM | Inspection Start Time | 2:50 PM |
|---|----------------|---------|-----------------------|---------|
| <p>First 24 Joints were Yellow band. There was only 28 Yellow band joints in the well.</p> <p>There was no Yellow band joints after joint 34.</p> <p>The joint count was out as there was 147 joints to the anchor in stead of 144.</p> <p>Total of 151 joints in the well.</p> |                |         |                       |         |

Inspector Cyril Gorman

Customer \_\_\_\_\_

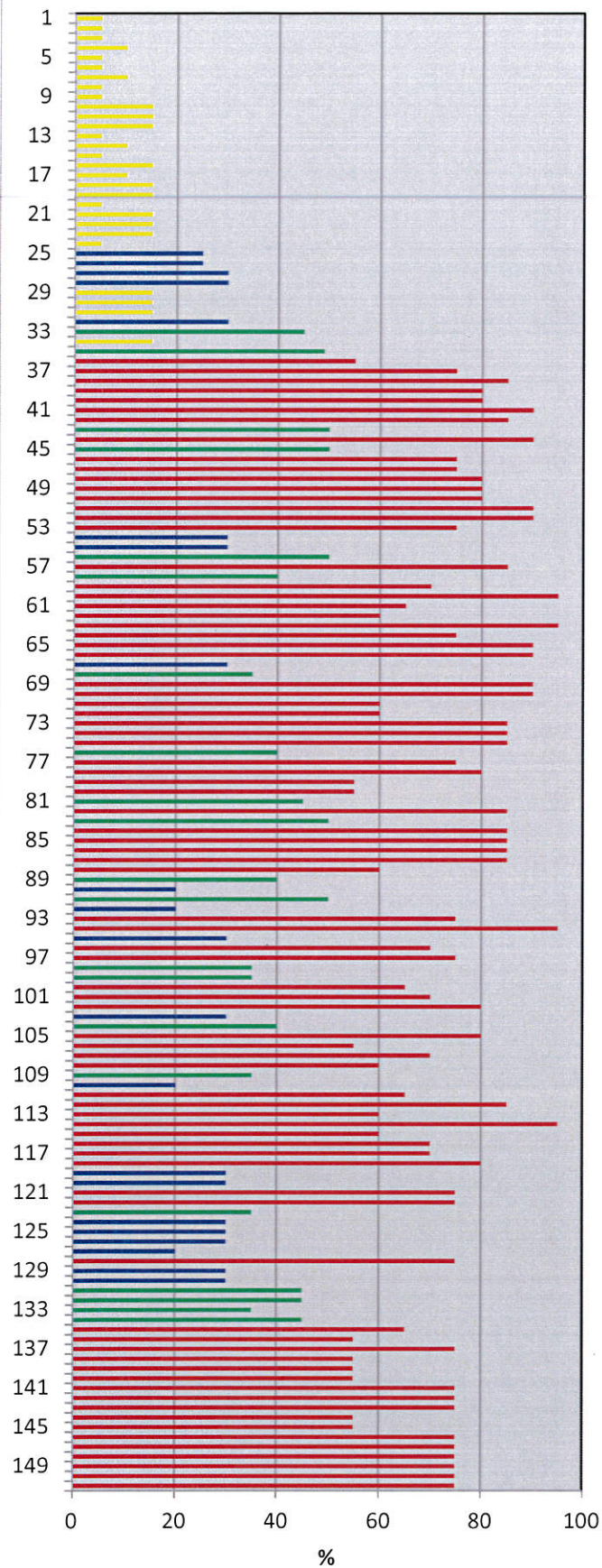
| Jt# | Wall Loss                             | Pitting | Damage              |
|-----|---------------------------------------|---------|---------------------|
| 1   | 5                                     | 5       |                     |
| 1   | Ultrasonic Wall Min: 0.214 Max: 0.228 |         |                     |
| 2   | 5                                     | 5       |                     |
| 3   | 5                                     | 5       |                     |
| 4   | 5                                     | 10      | Pitting             |
| 5   | 5                                     | 5       |                     |
| 6   | 5                                     | 5       |                     |
| 7   | 5                                     | 10      | Pitting             |
| 8   | 5                                     | 5       |                     |
| 9   | 5                                     | 5       |                     |
| 10  | 5                                     | 15      | Pitting             |
| 11  | 5                                     | 15      | Pitting             |
| 12  | 5                                     | 15      | Pitting             |
| 13  | 5                                     | 5       |                     |
| 14  | 5                                     | 10      | Pitting             |
| 15  | 5                                     | 5       |                     |
| 16  | 5                                     | 15      | Pitting             |
| 17  | 5                                     | 10      | Pitting             |
| 18  | 5                                     | 15      | Pitting             |
| 19  | 5                                     | 15      | Pitting             |
| 20  | 5                                     | 5       |                     |
| 21  | 5                                     | 15      | Pitting             |
| 22  | 5                                     | 15      | Pitting             |
| 23  | 5                                     | 15      | Pitting             |
| 24  | 5                                     | 5       |                     |
| 25  | 10                                    | 25      | Wall Loss & Pitting |
| 26  | 10                                    | 25      | Wall Loss & Pitting |
| 27  | 10                                    | 30      | Wall Loss & Pitting |
| 28  | 5                                     | 30      | Pitting             |
| 29  | 5                                     | 15      | Pitting             |
| 30  | 5                                     | 15      | Pitting             |
| 31  | 5                                     | 15      | Pitting             |
| 31  | Ultrasonic Wall Min: 0.190 Max: 0.225 |         |                     |
| 32  | 5                                     | 30      | Pitting             |
| 33  | 5                                     | 45      | Pitting             |
| 34  | 5                                     | 15      | Pitting             |
| 35  | 20                                    | 49      | Wall Loss & Pitting |
| 36  | 5                                     | 55      | Pitting             |
| 37  | 5                                     | 75      | Pitting             |
| 38  | 10                                    | 85      | Wall Loss & Pitting |
| 39  | 5                                     | 80      | Pitting             |
| 40  | 5                                     | 80      | Pitting             |
| 41  | 20                                    | 90      | Wall Loss & Pitting |
| 42  | 10                                    | 85      | Wall Loss & Pitting |
| 43  | 5                                     | 50      | Pitting             |
| 44  | 5                                     | 90      | Pitting             |
| 45  | 5                                     | 50      | Pitting             |
| 46  | 5                                     | 75      | Pitting             |
| 47  | 10                                    | 75      | Wall Loss & Pitting |
| 48  | 10                                    | 80      | Wall Loss & Pitting |
| 49  | 10                                    | 80      | Wall Loss & Pitting |

| Jt# | Wall Loss | Pitting | Damage              |
|-----|-----------|---------|---------------------|
| 50  | 10        | 80      | Wall Loss & Pitting |
| 51  | 10        | 90      | Wall Loss & Pitting |
| 52  | 10        | 90      | Wall Loss & Pitting |
| 53  | 5         | 75      | Pitting             |
| 54  | 5         | 30      | Pitting             |
| 55  | 5         | 30      | Pitting             |
| 56  | 5         | 50      | Pitting             |
| 57  | 20        | 85      | Wall Loss & Pitting |
| 58  | 5         | 40      | Pitting             |
| 59  | 10        | 70      | Wall Loss & Pitting |
| 60  | 20        | 95      | Wall Loss & Pitting |
| 61  | 10        | 65      | Wall Loss & Pitting |
| 62  | 5         | 60      | Pitting             |
| 63  | 45        | 95      | Wall Loss & Pitting |
| 64  | 5         | 75      | Pitting             |
| 65  | 15        | 90      | Wall Loss & Pitting |
| 66  | 10        | 90      | Wall Loss & Pitting |
| 67  | 5         | 30      | Pitting             |
| 68  | 5         | 35      | Pitting             |
| 69  | 10        | 90      | Wall Loss & Pitting |
| 70  | 10        | 90      | Wall Loss & Pitting |
| 71  | 10        | 60      | Wall Loss & Pitting |
| 72  | 5         | 60      | Pitting             |
| 73  | 5         | 85      | Pitting             |
| 74  | 10        | 85      | Wall Loss & Pitting |
| 75  | 10        | 85      | Wall Loss & Pitting |
| 76  | 5         | 40      | Pitting             |
| 77  | 5         | 75      | Pitting             |
| 78  | 5         | 80      | Pitting             |
| 79  | 5         | 55      | Pitting             |
| 80  | 5         | 55      | Pitting             |
| 81  | 5         | 45      | Pitting             |
| 82  | 5         | 85      | Pitting             |
| 83  | 5         | 50      | Pitting             |
| 84  | 5         | 85      | Pitting             |
| 85  | 5         | 85      | Pitting             |
| 86  | 5         | 85      | Pitting             |
| 87  | 5         | 85      | Pitting             |
| 88  | 5         | 60      | Pitting             |
| 89  | 5         | 40      | Pitting             |
| 90  | 5         | 20      | Pitting             |
| 91  | 5         | 50      | Pitting             |
| 92  | 5         | 20      | Pitting             |
| 93  | 5         | 75      | Pitting             |
| 94  | 5         | 95      | Pitting             |
| 95  | 5         | 30      | Pitting             |
| 96  | 5         | 70      | Pitting             |
| 97  | 10        | 75      | Wall Loss & Pitting |
| 98  | 5         | 35      | Pitting             |
| 99  | 5         | 35      | Pitting             |
| 100 | 5         | 65      | Pitting             |

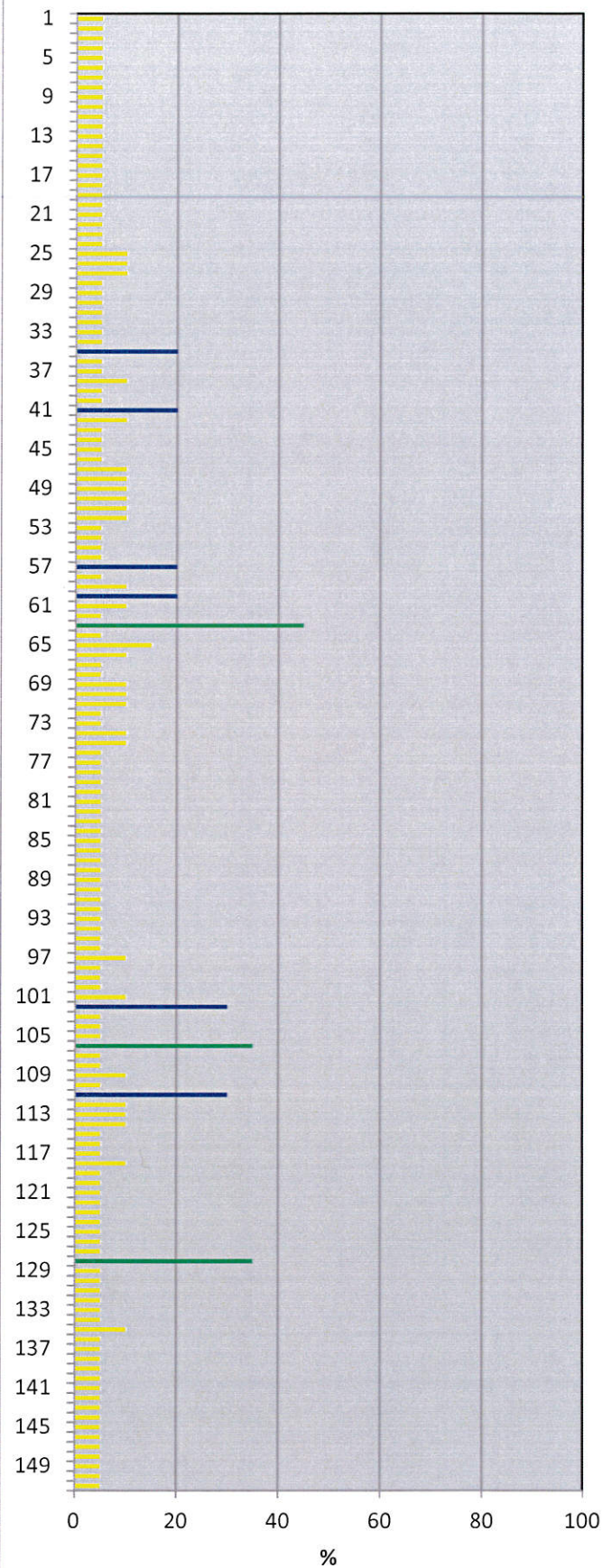
| Jt# | Wall Loss                             | Pitting | Damage              |
|-----|---------------------------------------|---------|---------------------|
| 101 | 10                                    | 70      | Wall Loss & Pitting |
| 101 | Ultrasonic Wall Min: 0.199 Max: 0.210 |         |                     |
| 102 | 30                                    | 80      | Wall Loss & Pitting |
| 103 | 5                                     | 30      | Pitting             |
| 104 | 5                                     | 40      | Pitting             |
| 105 | 5                                     | 80      | Pitting             |
| 106 | 35                                    | 55      | Wall Loss & Pitting |
| 107 | 5                                     | 70      | Pitting             |
| 108 | 5                                     | 60      | Pitting             |
| 109 | 10                                    | 35      | Wall Loss & Pitting |
| 110 | 5                                     | 20      | Pitting             |
| 111 | 30                                    | 65      | Wall Loss & Pitting |
| 112 | 10                                    | 85      | Wall Loss & Pitting |
| 113 | 10                                    | 60      | Wall Loss & Pitting |
| 114 | 10                                    | 95      | Wall Loss & Pitting |
| 115 | 5                                     | 60      | Pitting             |
| 116 | 5                                     | 70      | Pitting             |
| 117 | 5                                     | 70      | Pitting             |
| 118 | 10                                    | 80      | Wall Loss & Pitting |
| 119 | 5                                     | 30      | Pitting             |
| 120 | 5                                     | 30      | Pitting             |
| 121 | 5                                     | 75      | Pitting             |
| 122 | 5                                     | 75      | Pitting             |
| 123 | 5                                     | 35      | Pitting             |
| 124 | 5                                     | 30      | Pitting             |
| 125 | 5                                     | 30      | Pitting             |
| 126 | 5                                     | 30      | Pitting             |
| 127 | 5                                     | 20      | Pitting             |
| 128 | 35                                    | 75      | Wall Loss & Pitting |
| 129 | 5                                     | 30      | Pitting             |
| 130 | 5                                     | 30      | Pitting             |
| 131 | 5                                     | 45      | Pitting             |
| 132 | 5                                     | 45      | Pitting             |
| 133 | 5                                     | 35      | Pitting             |
| 134 | 5                                     | 45      | Pitting             |
| 135 | 10                                    | 65      | Wall Loss & Pitting |
| 136 | 5                                     | 55      | Pitting             |
| 137 | 5                                     | 75      | Pitting             |
| 138 | 5                                     | 55      | Pitting             |
| 139 | 5                                     | 55      | Pitting             |
| 140 | 5                                     | 55      | Pitting             |
| 141 | 5                                     | 75      | Pitting             |
| 142 | 5                                     | 75      | Pitting             |
| 143 | 5                                     | 75      | Pitting             |
| 144 | 5                                     | 55      | Pitting             |
| 145 | 5                                     | 55      | Pitting             |
| 146 | 5                                     | 75      | Pitting             |
| 147 | 5                                     | 75      | Pitting             |
| 148 | 5                                     | 75      | Not scoped          |
| 149 | 5                                     | 75      | Not scoped          |
| 150 | 5                                     | 75      | Not scoped          |

| Jt# | Wall Loss | Pitting | Damage     |
|-----|-----------|---------|------------|
| 151 | 5         | 75      | Not scoped |

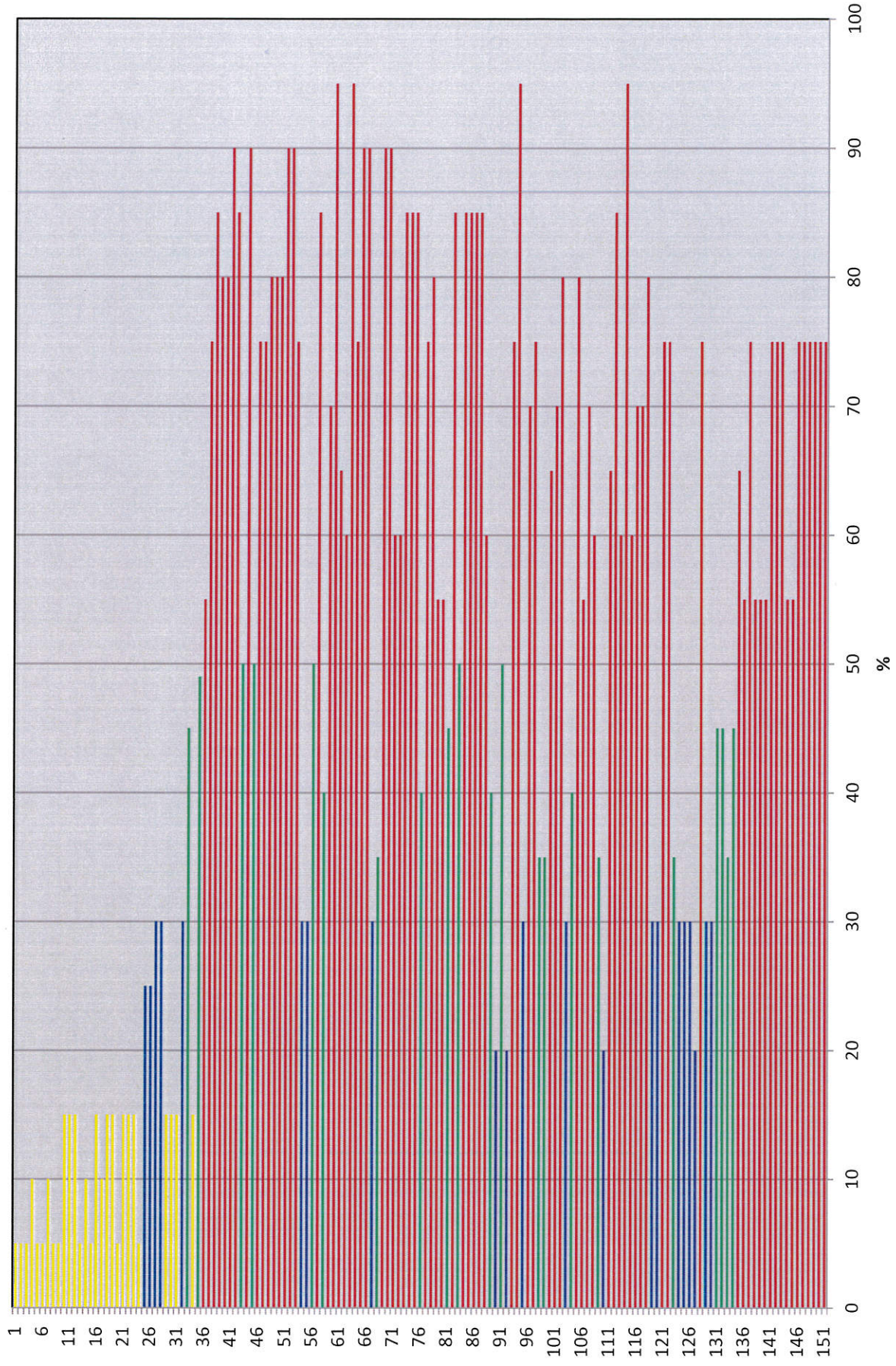
### Pitting 1 to 151



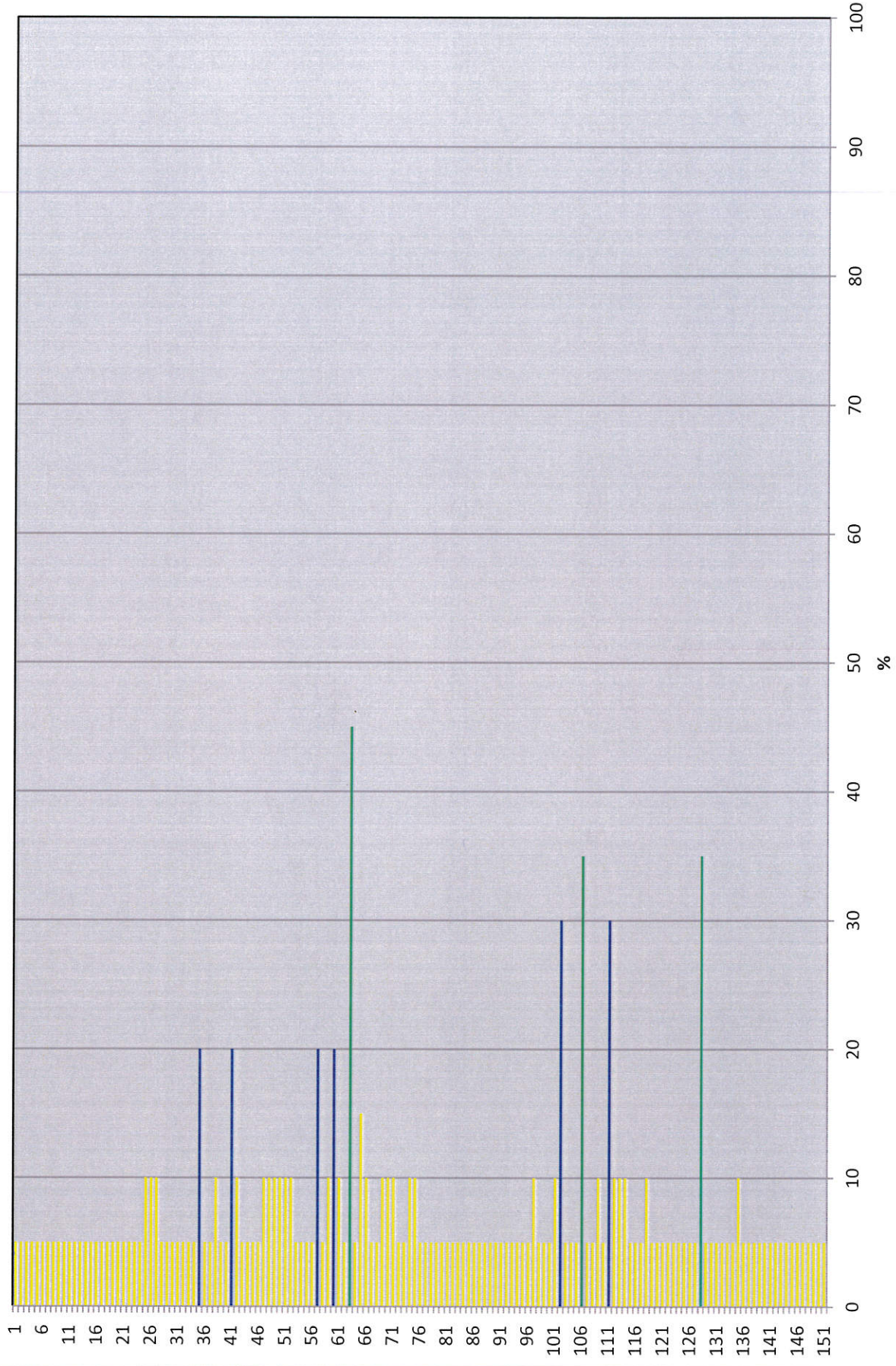
### Wall Loss 1 to 151



# Pitting 1 to 151



# Wall Loss 1 to 151



Operator: Strategic Oil &amp; Gas Ltd.

Reporting To: Ken Nikiforuk

Consultant: Shayne Stahl

Tel2:  
Tel1: (780) 841-8106

|  |            |                                     |          |                             |           |
|--|------------|-------------------------------------|----------|-----------------------------|-----------|
| UWI: 300H036010117300  |            | WELL: Strategic Cameron Hills Plant |          | DATE: 01-Mar-2019           |           |
| 24 Hr Summary: Moved on, rigged up, POOH with rods, RIH with overshot, unseated BHP, kil |            |                                     |          |                             |           |
| Formation: Sulphur Point   |            | Surf Loc: H-03 60-10N 117-30W       |          | Licence: 1940               |           |
| Objective: Abandon Keg River and Sulp  |            | Abandonment Type: Downhole          |          | Serv Rig Start: 01-Mar-2019 |           |
| Operations at 6:00: Lay down rods, install BOPs.   |            | AFE #: 19ABCAM003                   |          | AFE Estimate: \$192,032.00  |           |
| Daily Cost: \$32,962   |            | Previous Cumulative Cost: \$10,205  |          | Cum Cost: \$43,167          |           |
| Ground:  | 764.50 m   | KB To TH:                           | m        | Open Hole:                  | mKB       |
| KB to Grd:   | 4.50 m     | Tubing:                             | 73 mm    | Bot at:                     | 1438.38 m |
| TD (MD):   | 1,662.40 m | Casing:                             | 177.8 mm | Set at:                     | 1662 m    |
| PBTD:  | 1,647.70 m | Liner:                              | mm       | Top at:                     | m         |
| BOP Drill:   |            | BOP Press Test:                     |          | Function Test: yes          |           |
| SITP:  | 0 kPa      | SICP:                               | 6420 kPa | SCV:                        | kPa       |
|  |            |                                     |          | H <sub>2</sub> S            | %         |

Remarks:

| Time From | Time To | Hours | Code   | Comments  |
|-----------|---------|-------|--------|---|
| 07:00     | 07:30   | 0.5   | SAFE   | Conducted crew safety and operations meeting. Swept lease for LEL's and H <sub>2</sub> S. Function tested air kills.  |
| 07:30     | 11:30   | 4     | RIG    | Moved rig mats and catwalk from 2H-03 to location.<br>Spotted and rigged up to Strategic and OROGO specs. Function tested crown saver.<br>Bubble tested scv, no bubbles in 15 mins.   |
| 11:30     | 13:00   | 1.5   | KILL   | Tested tbg to 5.0 MPA, attempted to unseat BHP, rods appeared to be parted. Could not screw on to parted rods.  |
| 13:00     | 15:00   | 2     | TRPROD | Lowered rod string and closed ratigans, removed stuffing box and installed rod BOPs. Tested rod BOPs to 5.0 MPA. Bled off csg gas head to 0 over 2 hours, gas flared was 2.061 E <sup>3</sup> M <sup>3</sup> , no flow rate due to pressure decline.<br>POOH and hung rods in derrick, recovered polish rod, 2 - ponies, 55 - 25.4mm scraped rods, 60 - 22.2mm plain rods, 13 - 19.05mm plain rods, 19.05mm rod was parted in the middle. |
| 15:00     | 16:00   | 1     | WAIT   | Waited on overshot kit.<br>Conducted accumulator check, function tested blind rams, 73.0mm pipe rams and annular.   |
| 16:00     | 19:00   | 3     | TRPROD | Made up 73.0mm overshot c/w 19.05mm grapple, RIH with rods, installed polish rod and stuffing box, latched on to parted rods. Unseated BHP.<br>Pumped 4.0 m <sup>3</sup> fresh water down tbg.<br>Secured well, drained pump and lines, SDFN.   |

Total: 12

Equipment on Location:

|                          |  |  |   |                               |                          |                         |
|--------------------------|--|--|---|-------------------------------|--------------------------|-------------------------|
| Reservoir Fluids Summary | Reset <input type="checkbox"/> Gas:              | Daily: 2.061 10 <sup>3</sup> m <sup>3</sup> /d | Cum: 2.061 10 <sup>3</sup> m <sup>3</sup> | Tubing volume: m <sup>3</sup> |                          |                         |
|                          | Cums <input type="checkbox"/> Oil or Condensate: | Daily: m <sup>3</sup>                          | Cum: 0 m <sup>3</sup>                     | Csg. ann vol: m <sup>3</sup>  |                          |                         |
|                          | <input type="checkbox"/> Water:                  | Daily: m <sup>3</sup>                          | Cum: 0 m <sup>3</sup>                     | Open hole vol: m <sup>3</sup> |                          |                         |
|                          | Time Swabbed/Flowed:                             | Daily: 0.00 hrs                                | Cum: hrs                                  | Total: 0 m <sup>3</sup>       |                          |                         |
| Load Fluids              | Reset <input type="checkbox"/> OIL               | Used m <sup>3</sup>                            | Cum 0 m <sup>3</sup>                      | Rec m <sup>3</sup>            | Cum 0 m <sup>3</sup>     | To Rec 0 m <sup>3</sup> |
|                          | Cums <input type="checkbox"/> WATER              | Used 4 m <sup>3</sup>                          | Cum 4 m <sup>3</sup>                      | Rec m <sup>3</sup>            | Cum 0 m <sup>3</sup>     | To Rec 4 m <sup>3</sup> |
|                          | <input type="checkbox"/> OTHER                   | Used m <sup>3</sup>                            | Cum 0 m <sup>3</sup>                      | Rec m <sup>3</sup>            | Cum 0 m <sup>3</sup>     | To Rec 0 m <sup>3</sup> |
| Hours                    | Service Rig Hours                                | Daily 12.00 hrs                                | Cumulative 12.00 hrs                      | DownTime: hrs                 | Cumulative DownTime: hrs |                         |
|                          | Personnel on Location                            | Rig: 6   | Service: 5                                | Company: 1                    | Total Personnel: 12      |                         |
|                          | Weather: Clear                                   | Temp -35 °C                                    | Lease: Good                               | Roads: Good                   |                          |                         |
| Manager:                 |  |  | Programmed By:                            |                               |                          |                         |

## Daily Abandonment Report

**Operator: Strategic Oil & Gas Ltd.**

Reporting To: Ken Nikiforuk

Consultant: Kurt Hewitt

Tel2:

Tel1: (780) 830-8303

[illegible]

## Daily Abandonment Report

**Operator: Strategic Oil & Gas Ltd.**

Reporting To: Ken Nikiforuk

Consultant: Kurt Hewitt

Tel2:

Tel1: (780) 830-8303

| UWI: 300H036010117300                 |      |           |                 | WELL: Strategic Cameron Hills Plant |     |                               |                | DATE: 09-Feb-2019 |                           |                    |  |      |      |           |     |      |  |  |  |  |  |  |  |  |  |  |  |  |  |  |  |  |  |  |  |  |
|---------------------------------------|------|-----------|-----------------|-------------------------------------|-----|-------------------------------|----------------|-------------------|---------------------------|--------------------|--|------|------|-----------|-----|------|--|--|--|--|--|--|--|--|--|--|--|--|--|--|--|--|--|--|--|--|
| 24 Hr Summary:                        |      |           |                 |                                     |     |                               |                | END: 08-Mar-2019  |                           |                    |  |      |      |           |     |      |  |  |  |  |  |  |  |  |  |  |  |  |  |  |  |  |  |  |  |  |
| Formation:                            |      |           |                 |                                     |     | Surf Loc: H-03 60-10N 117-30W |                |                   | Licence: 1940             |                    | Day #: 1   |      |      |           |     |      |  |  |  |  |  |  |  |  |  |  |  |  |  |  |  |  |  |  |  |  |
| Objective: Abandon Keg River and Sulp |      |           |                 | Abandonment Type: Downhole          |     | Serv Rig Start: 01-Mar-2019   |                |                   | Serv Rig End: 07-Mar-2019 |                    |  |      |      |           |     |      |  |  |  |  |  |  |  |  |  |  |  |  |  |  |  |  |  |  |  |  |
| Operations at 6:00:                   |      |           |                 |                                     |     | AFE #: 19ABCAM003             |                | AFE Estimate:     |                           | \$192,032.00       |  |      |      |           |     |      |  |  |  |  |  |  |  |  |  |  |  |  |  |  |  |  |  |  |  |  |
| Daily Cost: \$10,040                  |      |           |                 | Previous Cumulative Cost:           |     |                               |                | \$0               |                           | Cum Cost: \$10,040 |  |      |      |           |     |      |  |  |  |  |  |  |  |  |  |  |  |  |  |  |  |  |  |  |  |  |
| Ground:                               |      | 764.50    | m               | KB To TH                            |     | m                             | Open Hole:     |                   | mKB                       |                    | <table border="1"> <thead> <tr> <th>Date</th> <th>Perf</th> <th>Formation</th> <th>Top</th> <th>Base</th> </tr> </thead> <tbody> <tr><td> </td><td> </td><td> </td><td> </td><td> </td></tr> <tr><td> </td><td> </td><td> </td><td> </td><td> </td></tr> <tr><td> </td><td> </td><td> </td><td> </td><td> </td></tr> <tr><td> </td><td> </td><td> </td><td> </td><td> </td></tr> </tbody> </table> | Date | Perf | Formation | Top | Base |  |  |  |  |  |  |  |  |  |  |  |  |  |  |  |  |  |  |  |  |
| Date                                  | Perf | Formation | Top             | Base                                |     |                               |                |                   |                           |                    |  |      |      |           |     |      |  |  |  |  |  |  |  |  |  |  |  |  |  |  |  |  |  |  |  |  |
|                                       |      |           |                 |                                     |     |                               |                |                   |                           |                    |  |      |      |           |     |      |  |  |  |  |  |  |  |  |  |  |  |  |  |  |  |  |  |  |  |  |
|                                       |      |           |                 |                                     |     |                               |                |                   |                           |                    |  |      |      |           |     |      |  |  |  |  |  |  |  |  |  |  |  |  |  |  |  |  |  |  |  |  |
|                                       |      |           |                 |                                     |     |                               |                |                   |                           |                    |  |      |      |           |     |      |  |  |  |  |  |  |  |  |  |  |  |  |  |  |  |  |  |  |  |  |
|                                       |      |           |                 |                                     |     |                               |                |                   |                           |                    |  |      |      |           |     |      |  |  |  |  |  |  |  |  |  |  |  |  |  |  |  |  |  |  |  |  |
| KB to Grd:                            |      | 4.50      | m               | Tubing:                             |     | mm                            | Bot at:        |                   | m                         |                    |  |      |      |           |     |      |  |  |  |  |  |  |  |  |  |  |  |  |  |  |  |  |  |  |  |  |
| TD (MD):                              |      | 1,662.40  | m               | Casing:                             |     | mm                            | Set at:        |                   | m                         |                    |  |      |      |           |     |      |  |  |  |  |  |  |  |  |  |  |  |  |  |  |  |  |  |  |  |  |
| PBTD:                                 |      | 1,647.70  | m               | Liner:                              |     | mm                            | Top at:        |                   | m                         |                    |  |      |      |           |     |      |  |  |  |  |  |  |  |  |  |  |  |  |  |  |  |  |  |  |  |  |
| BOP Drill:                            |      |           | BOP Press Test: |                                     |     |                               | Function Test: |                   |                           |                    |  |      |      |           |     |      |  |  |  |  |  |  |  |  |  |  |  |  |  |  |  |  |  |  |  |  |
| SITP:                                 |      | kPa       | SICP:           |                                     | kPa | SCV:                          |                | kPa               | H <sub>2</sub> S          | %                  |  |      |      |           |     |      |  |  |  |  |  |  |  |  |  |  |  |  |  |  |  |  |  |  |  |  |

|          |  |
|----------|--|
| Remarks: |  |
|----------|--|

[illegible]

|        |      |
|--------|------|
| Total: | 10.5 |
|--------|------|

| Equipment on Location:   |                       |   |        |                                   |            |                                  |                               |                |                      |                  |        |                  |
|--------------------------|-----------------------|---|--------|-----------------------------------|------------|----------------------------------|-------------------------------|----------------|----------------------|------------------|--------|------------------|
| Reservoir Fluids Summary | Reset                 | <input type="checkbox"/> Gas:               | Daily: | 10 <sup>3</sup> m <sup>3</sup> /d | Cum:       | 0 10 <sup>3</sup> m <sup>3</sup> | Tubing volume: m <sup>3</sup> |                |                      |                  |        |                  |
|                          | Cums                  | <input type="checkbox"/> Oil or Condensate: | Daily: | m <sup>3</sup>                    | Cum:       | m <sup>3</sup>                   | Csg. ann vol: m <sup>3</sup>  |                |                      |                  |        |                  |
|                          |                       | <input type="checkbox"/> Water:             | Daily: | m <sup>3</sup>                    | Cum:       | m <sup>3</sup>                   | Open hole vol: m <sup>3</sup> |                |                      |                  |        |                  |
|                          | Time Swabbed/Flowed:  |   | Daily: | hrs                               | Cum:       | hrs                              | Total: 0 m <sup>3</sup>       |                |                      |                  |        |                  |
| Load Fluids              | Reset                 | <input type="checkbox"/> OIL                | Used   | m <sup>3</sup>                    | Cum        | m <sup>3</sup>                   | Rec                           | m <sup>3</sup> | Cum                  | m <sup>3</sup>   | To Rec | m <sup>3</sup>   |
|                          | Cums                  | <input type="checkbox"/> WATER              | Used   | m <sup>3</sup>                    | Cum        | 0 m <sup>3</sup>                 | Rec                           | m <sup>3</sup> | Cum                  | 0 m <sup>3</sup> | To Rec | 0 m <sup>3</sup> |
|                          |                       | <input type="checkbox"/> OTHER              | Used   | m <sup>3</sup>                    | Cum        | m <sup>3</sup>                   | Rec                           | m <sup>3</sup> | Cum                  | m <sup>3</sup>   | To Rec | m <sup>3</sup>   |
| Hours                    | Service Rig Hours     |   | Daily  | hrs                               | Cumulative | hrs                              | DownTime:                     | hrs            | Cumulative DownTime: |                  |        | hrs              |
|                          | Personnel on Location |   | Rig:   |                                   | Service:   |                                  | Company:                      |                |                      | Total Personnel: |        | 0                |
|                          | Weather:              |   | Temp   | °C                                | Lease:     |                                  |                               |                | Roads:               |                  |        |                  |
| Manager:                 |                       |   |        | Programmed By:                    |            |                                  |                               |                |                      |                  |        |                  |