

Strategic Oil & Gas Ltd.
Final Well Operations Report
Strategic et al Cameron A-05
Well ID – 376
300/A05601011730/0

- Feb 20, 2019 :** MIRU Global #9. Performed SCVF test for 15 minutes. No bubbles.
- Feb 21, 2019 :** SITP = 7420 kPa. SICP = 6480 kPa. Bled off tubing gas head to p-tank down to 450 kPa. Built back up to 7400 kPa when shut in. Pumped 5.0 m3 fresh water down tubing. Bled off casing to p-tank to 0 kPa. Pumped 15.0 m3 fresh water down casing. Total gas flared 2.415 e3m3 in 60 minutes. Installed and pressure tested BOP's. Attempt to remove lag screws. Only 2 of the 4 came out, the other two were seized. SDFN.
- Feb 22, 2019 :** SITP = 7420 kPa. SICP = 300 kPa. Worked on lag screws hydraulic impact. Successful. Pumped 18.0 m3 fresh water down casing. Pumped 5.0 m3 fresh water down tubing. Unset Packer. Packer was dragging. RIH and tagged bottom, set packer at 1475.0 mKB and come off of on/off. Well started to vent gas. Shut in well. Pumped 4.0 m3 fresh water down tubing and 7.0 m3 fresh water down casing. Pull and lay down 60.3 mm tubing. Trickled fresh water (0.05 mn3/min) down casing while pulling pipe. With 95 joints out, well started to vent gas. Shut in well. Pumped 10.0 m3 fresh water down casing. Continued trickling fresh water down casing. Pull and lay down remaining tubing (yellow – 153, blue – 0, green – 0 and red – 2). SDFN.
- Feb 23, 2019 :** Pumped 10.0 m3 fresh water down casing. Trickle (0.05 m3/min) inhibited fresh water (0.5% CRW-132) down casing while tripping pipe. RIH with packer / bridge plug BHA. Landed BP at 1475.0 mKB. Filled tubing with 3.0 m3 fresh water and pressured up to 14000 kPa to set BP. Rotated off BP, picked up 1.0 meter and set packer. Filled tubing with 0.75 m3 fresh water and pressure tested BP to 7000 kPa for 10 minutes. Solid test. Unset packer and circulated 4.0 m3 inhibited fresh water down tubing. Pulled 16 joints tubing. Set packer at 1336.8 mKB. Casing was displaced from trickling inhibited fresh water during tripping operations. Topped casing up with 300 liters diesel and 1.0 m3 inhibited fresh water. Pressure test annulus to 7000 kPa for 10 minutes. Solid test. Removed BOP's and installed wellhead. Rig out.
- Feb 26, 2019 :** MIRU Bonnett's Wireline. MURIH with 46.02 mm 'R' plug. Set in nipple at 1329.9 mKB. Fill tubing with 1.2 m3 50/50 methanol / inhibited fresh water. Pressure test tubing to 7000 kPa for ten minutes. Solid test. Rig out wireline.



March 25, 2019

WELL TERMINATION RECORD

INSTRUCTIONS:

1. Complete both pages.
2. Send one electronic copy of this form and supporting technical documentation by email to orogo@gov.nt.ca.
3. Send two signed hard copies of this form and supporting technical documentation by courier to:
 Chief Conservation Officer
 Office of the Regulator of Oil and Gas Operations
 4th floor Northwest Tower
 5201 50th Avenue
 Yellowknife NT X1A 3S9

WELL INFORMATION

Well Name	Strategic et al Cameron A-05	Operator	Strategic Oil & Gas Ltd.
Well Type	Development Well (if Other, specify _____)	Contractor	Global Well Servicing Rig 9
Well Identifier	376	Current Well Status	Suspended

RELATED LICENCES AND AUTHORIZATIONS

Operating Licence No.	NWT-OL-2014-007	Operations Authorization	OA - 1237-001
PRA Licence No.	Production Licence 013	Approval to Alter Condition of Well	ACW - 2018-011

LOCATION INFORMATION

Coordinates Datum: NAD27 (if Other, please specify _____)

Surface	Lat 60 ° 4 ' 2 "	Long 117 ° 30 ' 27 "
Bottom Hole	Lat 60 ° 4 ' 2 "	Long 117 ° 30 ' 27 "

Region: Dehcho Unit A Section 5 Grid 60-10 117-30

ACTIVITY INFORMATION

Target Formation(s)	Keg River / Slave Point	Field/Pool(s)	/
Elevation KB/RT	778.9 m	Ground Level / Seafloor	775.1 m
Spud/Re-entry Date	Feb 20, 2019 days	Total Depth	1514.6 m KB
Rig Release Date	Feb 26, 2019	Total Vertical Depth	1514.6 m KB

CASING AND CEMENTING PROGRAM

O.D. (mm)	Weight (kg/m)	Grade	Setting Depth (m KB)	Cementing (m ³)
219.1	35.72	J-55	253.0	18.6 tonnes
139.7	20.83	J-55	1514.6	8.8 tonnes

PLUGGING PROGRAM

Type of Plug	Interval (m KB)	Felt	Setting Depth (m KB)	Cementing (m ³)
Bridge	-	No	1474.8	
Other	-	No	1329.9	
Select	-	Select		
Select	-	Select		


PERFORATION

Interval (m KB)	Comments
1481.0-1484.4	Keg River - Suspended
1338.4-1350.6	Slave Point -Suspended
-	
-	

OTHER

Lost Circulation/Overpressure Zones	
Equipment Left on Site (Describe)	Gas well preproduction equipment
Provision for Re-entry (Describe and attach sketch)	
Other Downhole Completion/Suspension	
Additional Comments	

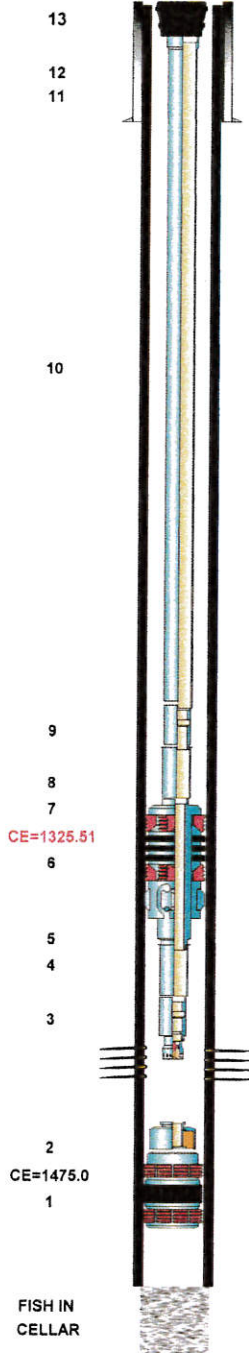
"I certify that the information provided on this form is true and correct"

Name	Ken Nikiforuk	Phone	(403) 767-2944 Ext
Title	Completions Manager	E-Mail	knikiforuk@sogoil.com
Operator	Strategic Oil & Gas Ltd		
Signature	 Responsible Officer of Company	Date	March 25, 2019

OROGO use only

Unique Well Identifier

 30 / - - /
 (eg. 300 / A01 60-00 120-00 / 0)

[illegible]

Operator: Strategic Oil & Gas Ltd.

Reporting To: Ken Nikiforuk

Consultant: Pete Dyck

 Tel2:
 Tel1: (780) 841-7816

UWI: 300A056010117300		WELL: Strategic et alCameron A-05		DATE: 26-Feb-2019	
24 Hr Summary: Run Tbg Plg,PT Tbg, Test pass, Rig out, Secure well, MOL					END: 27-Feb-2019
Formation: Keg River		Surf Loc: A-05 60-10N 117-30W		Licence: 376	Day #: 5
Objective: Suspend well as per OROGO guidelines			Serv Rig Start: 20-Feb-2019	Serv Rig End: 23-Feb-2019	
Operations at 6:00: Job Completed			AFE #: 19WRCAM010	AFE Estimate: \$160,570.00	
Daily Cost: \$14,317		Previous Cumulative Cost: \$128,524		Cum Cost: \$142,841	
Ground:	775.10 m	KB To TH	3.30 m	Open Hole:	mKB
KB to Grd:	3.80 m	Tubing:	60.3 mm	Bot at:	m
TD (MD):	1,514.60 m	Casing:	139.7 mm	Set at:	1514.6 m
PBTD:	1,513.60 m	Liner:	mm	Top at:	m
BOP Drill:		BOP Press Test:		Function Test:	
SITP:	0 kPa	SICP:	219 kPa	SCV:	kPa H ₂ S %

Remarks:

46.02mm RZG Plug set In "R" Profile at 1330mkb.

Time From	Time To	Hours	Code	Comments
12:00	13:00	1	SAFE	Meet with all personal at Cameron Hills Camp. Held daily operations and safety meeting. Review Job procedures, Hazards, ERP, Issue work permit. Travel to Location.
13:00	15:00	2		Sweep wellhead for H2S & LEL'S, none detected. Record SITP 0; SICP 219kpa. Spot Slickline Equip, and rig in to SOG & OROGO Specs. Purge Lubricator with N2. MURIH 47.24mm Gauge ring. Tag Fluid level at 580MGL. Tag 46.02mm "R" Profile nipple at 1325MGL. POOH.
15:00	16:15	1.25	PTST	MURIH with 46.02mm RZG Plug, set in 46.02mm "R" profile at 1325MGL. POOH. Rig in Four-L Pressure unit, PT Pump Lines 12mpa,Test Good. Fill Tbg with 1.2m3 of 50/50 Methonal / inhibited water. Pressure Tbg up to 7mpa,surf leaks,repair same. PT Tbg 7mpa x 10mins.7235kpa to 7130kpa, 105kpa loss in 10mins. Test PASS. (1.45%) Bleed off tbg to Zero.
16:15	16:45	0.5	RIG	Rigout Pressure Truck & Slickline Equip.
16:45	17:00	0.25		Secure well, all Valves closed, Wellhead Chained and locked. Move off Location.

Total: 5

Equipment on Location:

Reservoir Fluids Summary	<input type="checkbox"/> Gas:	Daily:	10 ³ m ³ /d	Cum:	2.415 10 ³ m ³	Tubing volume:	m ³
	<input type="checkbox"/> Oil or Condensate:	Daily:	m ³	Cum:	0 m ³	Csg. ann vol:	m ³
	<input type="checkbox"/> Water:	Daily:	m ³	Cum:	0 m ³	Open hole vol:	m ³
	Time Swabbed/Flowed:	Daily:	hrs	Cum:	hrs	Total:	0 m ³
Load Fluids	<input type="checkbox"/> OIL	Used	m ³	Cum	0 m ³	Rec	m ³
	<input type="checkbox"/> WATER	Used	0.6 m ³	Cum	105.6 m ³	Rec	m ³
	<input type="checkbox"/> OTHER	Used	0.6 m ³	Cum	0.6 m ³	Rec	m ³
Hours	Service Rig Hours	Daily	hrs	Cumulative	43.00 hrs	DownTime:	hrs
	Personnel on Location	Rig:		Service:	5	Company:	1
	Weather: Overcast	Temp	-4 °C	Lease:	Good	Roads:	Good
Manager:		Programmed By:					

Operator: Strategic Oil & Gas Ltd.

Reporting To: Ken Nikiforuk

Consultant: Shayne Stahl

Tel2:
Tel1: (780) 841-8106

UWI: 300A056010117300		WELL: Strategic et alCameron A-05		DATE: 23-Feb-2019	
24 Hr Summary: RIH with PBP and packer, set and tested to 7 MPA, rigged out rig and equip					
Formation: Keg River		Surf Loc: A-05 60-10N 117-30W		Licence: 376	
Objective: Suspend well as per OROGO guidelines		Serv Rig Start: 20-Feb-2019		Serv Rig End: 23-Feb-2019	
Operations at 6:00: Move to 2H-03.		AFE #: 19WRCAM010		AFE Estimate: \$160,570.00	
Daily Cost: \$34,276		Previous Cumulative Cost: \$94,248		Cum Cost: \$128,524	
Ground:	775.10 m	KB To TH	3.30 m	Open Hole:	mKB
KB to Grd:	3.80 m	Tubing:	60.3 mm	Bot at:	m
TD (MD):	1,514.60 m	Casing:	139.7 mm	Set at:	1514.6 m
PBTD:	1,513.60 m	Liner:	mm	Top at:	m
BOP Drill: yes		BOP Press Test: yes		Function Test: yes	
SITP:	N/A kPa	SICP:	0 kPa	SCV:	kPa
				H ₂ S	%

Remarks:

Time From	Time To	Hours	Code	Comments
07:00	07:30	0.5	SAFE	Conducted crew safety and operations meeting. Swept lease for LEL's and H ₂ S. Function tested crown saver, air kills, 60.3mm pipe rams and annular.
07:30	08:30	1	KILL	Pumped 10.0 m ³ fresh water down csg, put pump on trickle at 0.05 m ³ /min with 0.5% CRW-132 inhibited water.
08:30	12:30	4	TRPTBG	RIH with Tryton 139.7mm HM-2 hydraulic set PBP, setting tool, 46.02mm R nipple, 60.3mm tbg pup, 139.7mm TX-8 DG packer c/w x-overs, tbg pup, 47.63mm F nipple and 156 - jts 60.3mm tbg. Tallied and pin drifted tbg.
12:30	14:00	1.5	PTST	Filled tbg with 3.0 m ³ fresh water and set PBP at 1475.0 mKB. Pulled 14,000 daN and packed off element. Rotated off of BP, set packer, filled tbg with 0.75 m ³ and tested BP to 7.0 MPA for a 10 min stabilized test. Unset packer and pumped 4.0 m ³ 0.50% CRW-132 inhibited fresh water down tbg.
14:00	16:00	2	PTST	Pulled 16 - jts tbg, installed space out pup and tbg hanger, set packer at 1335.0 mKB. Csg was displaced to inhibited water from trickling. Pumped 300 liters diesel down csg, topped up csg with 2.0 m ³ inhibited water, let air migrate out for 30 mins, tested packer to 7,080 kpa, bled down to 7,055 kpa in 10 mins.
16:00	19:00	3	RIG	Rigged out working floor, removed BOPs and installed wellhead. Rigged out rig and equipment. Secured well, SDFN.

Total: 12

Equipment on Location:

Reservoir Fluids Summary	Reset <input type="checkbox"/> Gas:	Daily:	10 ³ m ³ /d	Cum:	2.415 10 ³ m ³	Tubing volume:	m ³
	Cums <input type="checkbox"/> Oil or Condensate:	Daily:	m ³	Cum:	0 m ³	Csg. ann vol:	m ³
	<input type="checkbox"/> Water:	Daily:	m ³	Cum:	0 m ³	Open hole vol:	m ³
	Time Swabbed/Flowed:	Daily:	0.00 hrs	Cum:	hrs	Total:	0 m ³
Load Fluids	Reset <input type="checkbox"/> OIL	Used	m ³	Cum	0 m ³	Rec	m ³
	Cums <input type="checkbox"/> WATER	Used	32 m ³	Cum	105 m ³	Rec	m ³
	<input type="checkbox"/> OTHER	Used	m ³	Cum	0 m ³	Rec	m ³
Hours	Service Rig Hours	Daily	12.00 hrs	Cumulative	43.00 hrs	DownTime:	hrs
	Personnel on Location	Rig:	6	Service:	4	Company:	1
	Weather: Clear/Windy	Temp	-29 °C	Lease:	Good	Roads:	Good
Manager:		Programmed By:					

Operator: Strategic Oil & Gas Ltd.

Reporting To: Ken Nikiforuk

Consultant: Shayne Stahl

Tel2:
Tel1: (780) 841-8106

UWI: 300A056010117300		WELL: Strategic et alCameron A-05		DATE: 22-Feb-2019	
24 Hr Summary: Repaired lag screws, killed well, unset packer, left packer on bottom, POOH. END: 27-Feb-2019					
Formation: Keg River		Surf Loc: A-05 60-10N 117-30W		Licence: 376 Day #: 3	
Objective: Suspend well as per OROGO guidelines		Serv Rig Start: 20-Feb-2019		Serv Rig End: 23-Feb-2019	
Operations at 6:00: Kill well, RIH with suspension string.		AFE #: 19WRCAM010		AFE Estimate: \$160,570.00	
Daily Cost: \$37,706		Previous Cumulative Cost: \$56,542		Cum Cost: \$94,248	
Ground:	775.10 m	KB To TH	3.30 m	Open Hole:	mKB
KB to Grd:	3.80 m	Tubing:	60.3 mm	Bot at:	m
TD (MD):	1,514.60 m	Casing:	139.7 mm	Set at:	1514.6 m
PBTD:	1,513.60 m	Liner:	mm	Top at:	m
BOP Drill: yes		BOP Press Test: yes		Function Test: yes	
SITP:	7420 kPa	SICP:	300 kPa	SCV:	kPa H ₂ S %

Remarks:

Time From	Time To	Hours	Code	Comments
07:00	07:30	0.5	SAFE	Conducted crew safety and operations meeting. Swept lease for LEL's and H ² S. Function tested crown saver, air kills, 60.3mm pipe rams and annular.
07:30	11:00	3.5	WLHD	Worked on lag screws with hydraulic impact. Lags were working. Pumped 18.0 m ³ fresh water down csg. Pumped 5.0 m ³ down csg.
11:00	14:00	3	TRPTBG	Picked up on tbg, worked packer free. Pulled tbg hanger, packer was dragging, could not go down. Pulled 1 jt, packer hung up, worked packer free, RIH with 5 jts, tagged bottom, set packer and came off of on/off. Well started venting gas. Blowout drill, 42 seconds to shut in. Pumped 4.0 m ³ down tbg and 7.0 m ³ down csg. Well filled up.
14:00	17:00	3	TRPTBG	Rigged up tbg inspector. POOH and inspected tbg. Pumped at 0.05 m ³ /min while pulling pipe. Well started venting gas with 95 jts out, stopped and pumped 10.0 m ³ down csg. Continued with trickle down csg. Crimped 2 jts. Will pin drift when running final. 153 - yellow, 2 - red.
17:00	18:00	1	TRPTBG	Made up final BHA. Landed tbg hanger for dual barrier. Secured well, drained pump and lines, SDFN.

Total: 11

Equipment on Location:

Reservoir Fluids Summary	Reset <input type="checkbox"/> Gas:	Daily:	10 ³ m ³ /d	Cum:	2.415 10 ³ m ³	Tubing volume:	m ³
	Cums <input type="checkbox"/> Oil or Condensate:	Daily:	m ³	Cum:	0 m ³	Csg. ann vol:	m ³
	<input type="checkbox"/> Water:	Daily:	m ³	Cum:	0 m ³	Open hole vol:	m ³
	Time Swabbed/Flowed:	Daily:	0.00 hrs	Cum:	hrs	Total:	0 m ³
Load Fluids	Reset <input type="checkbox"/> OIL	Used	m ³	Cum	0 m ³	Rec	m ³
	Cums <input type="checkbox"/> WATER	Used	53 m ³	Cum	73 m ³	Rec	m ³
	<input type="checkbox"/> OTHER	Used	m ³	Cum	0 m ³	Rec	m ³
Hours	Service Rig Hours	Daily	11.00 hrs	Cumulative	31.00 hrs	DownTime:	hrs
	Personnel on Location	Rig:	6	Service:	6	Company:	1
	Weather: Snow/Windy	Temp	-18 °C	Lease:	Good	Roads:	Good
Manager:		Programmed By:					



114-172 Clearview Drive Red Deer County, AB T4E 0A1

Field Ticket
Contact
Phone

P92026

CHAD ROOKES

780-512-5009

Customer Information

Company Name	STRATEGIC OIL&GAS	Date	February 22, 2019
Surface Location	A-05	AFE No.	
UWI	A056010N11730W	Contract	
Rig Name & #	GLOBAL#9	Co. Rep	SHAYNE STAHL
Area	Peace River, AB	Code #	

Wellhead Tubing Inspection

Qty	Description	Unit Price	Total
1	Minimum Charge Day Rate	\$ 1,295.00	\$ 1,295.00
3	Standby Charge Per Hour	\$ 165.00	\$ 495.00
600	Kms From Base & Return	\$ 1.50	\$ 900.00
155	Joints of 60.3mm, 6.99Kg, J55, EUE Tubing Inspected	\$ 15.00	\$ 2,325.00

Sub Total	\$ 5,015.00
10% Discount	\$ -501.50
New Sub Total	\$ 4,513.50
GST	\$ 225.68
Total	\$ 4,739.18

Ultra Sonic Measurements		
Jt #	Wall Min	Wall Max
1	0.186	0.189
47	0.180	0.184
100	0.183	0.187

Head	60H05
Console	B0002
T-MGN	.7
R-WDS	2.3

0-15%	Yellow	153
16-30%	Blue	0
31-49%	Green	0
50+%	Red	2
Total		155

Order of Tubing Pulled	
5	60.3mm J-55 PUP
140	60.3mm J-55 Tubing
1	SLEEVE
14	60.3mm J-55 Tubing
1	60.3mm J-55 PUP
1	60.3mm J-55 Tubing
1	BHA

Time Requested	7:30 AM	Inspection Start Time	9:30 AM
----------------	---------	-----------------------	---------

Inspector TYLER AHEARN

Customer

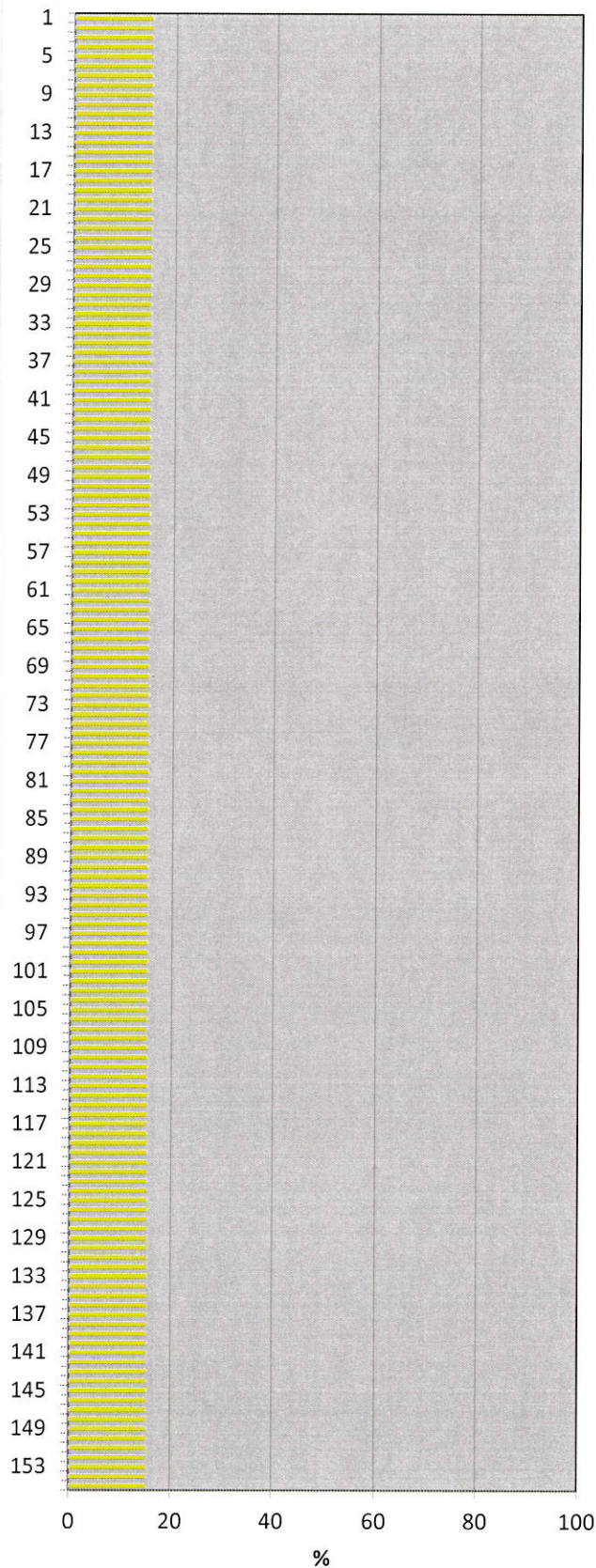
Jt#	Wall Loss	Pitting	Damage
1	15	15	
1	Ultrasonic Wall Min: 0.186 Max: 0.189		
2	15	15	
3	15	15	
4	15	15	
5	15	15	
6	15	15	
7	15	15	
8	15	15	
9	15	15	
10	15	15	
11	15	15	
12	15	15	
13	15	15	
14	15	15	
15	15	15	
16	15	15	
17	15	15	
18	15	15	
19	15	15	
20	15	15	
21	15	15	
22	15	15	
23	15	15	
24	15	15	
25	15	15	
26	15	15	
27	15	15	
28	15	15	
29	15	15	
30	15	15	
31	15	15	
32	15	15	
33	15	15	
34	15	15	
35	15	15	
36	15	15	
37	15	15	
38	15	15	
39	15	15	
40	15	15	
41	15	15	
42	15	15	
43	15	15	
44	15	15	
45	15	15	
46	15	15	
47	15	15	
47	Ultrasonic Wall Min: 0.180 Max: 0.184		
48	15	15	Crimped Joint
49	15	15	
Jt#	Wall Loss	Pitting	Damage

Jt#	Wall Loss	Pitting	Damage
50	15	15	
51	15	15	
52	15	15	
53	15	15	
54	15	15	
55	15	15	
56	15	15	
57	15	15	
58	15	15	
59	15	15	
60	15	15	
61	15	15	
62	15	15	
63	15	15	
64	15	15	
65	15	15	
66	15	15	
67	15	15	
68	15	15	
69	15	15	
70	15	15	
71	15	15	
72	15	15	
73	15	15	
74	15	15	
75	15	15	
76	15	15	
77	15	15	
78	15	15	
79	15	15	
80	15	15	
81	15	15	
82	15	15	
83	15	15	
84	15	15	
85	15	15	
86	15	15	
87	15	15	
88	15	15	
89	15	15	
90	15	15	
91	15	15	
92	15	15	
93	15	15	
94	15	15	
95	15	15	
96	15	15	
97	15	15	
98	15	15	
99	15	15	
100	15	15	
Jt#	Wall Loss		

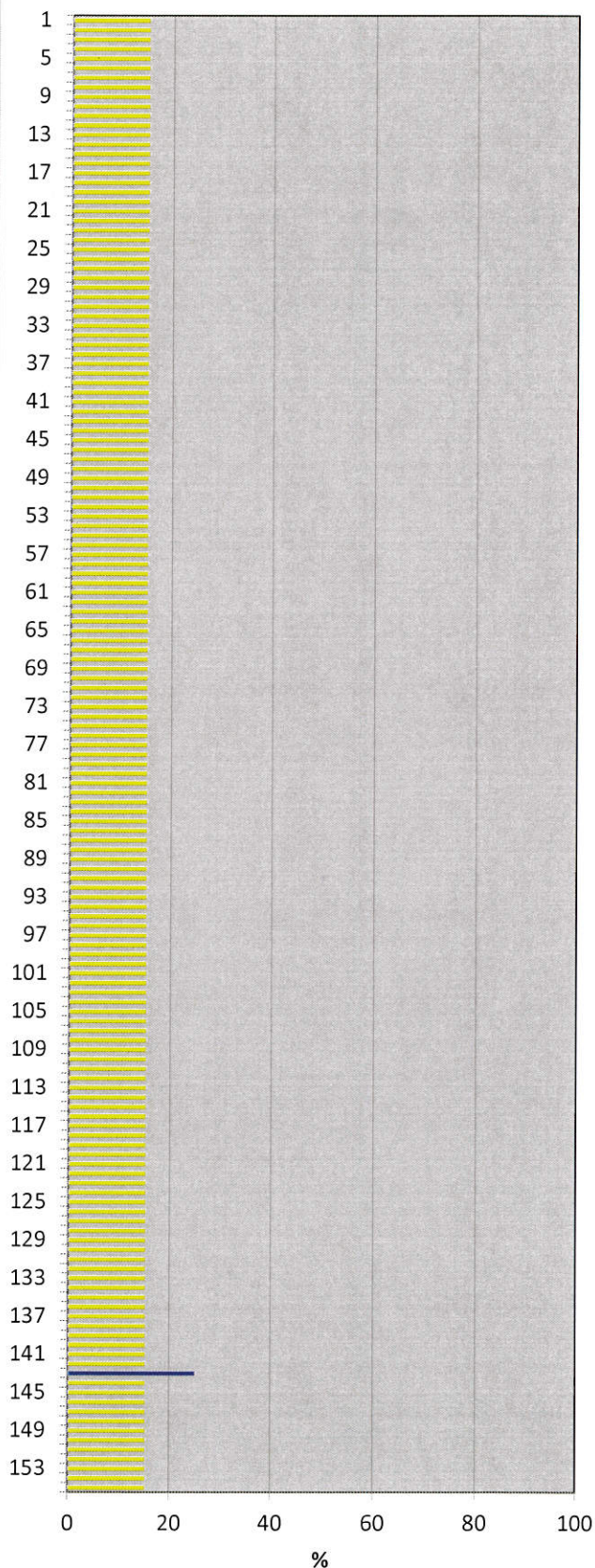
101	15	15	
102	15	15	
103	15	15	
104	15	15	
105	15	15	
106	15	15	
107	15	15	
108	15	15	
109	15	15	
110	15	15	
111	15	15	
112	15	15	
113	15	15	
114	15	15	
115	15	15	
116	15	15	
117	15	15	
118	15	15	
119	15	15	
120	15	15	
121	15	15	
122	15	15	
123	15	15	
124	15	15	
125	15	15	
126	15	15	
127	15	15	
128	15	15	
129	15	15	
130	15	15	
131	15	15	
132	15	15	
133	15	15	
134	15	15	
135	15	15	
136	15	15	
137	15	15	
138	15	15	
139	15	15	
140	15	15	
141	15	15	
142	15	15	
143	25	15	Wall Loss
144	15	15	
145	15	15	
146	15	15	
147	15	15	
148	15	15	
149	15	15	
150	15	15	
151	15	15	

152	15	15	
153	15	15	
154	15	15	
155	15	15	

Pitting 1 to 155



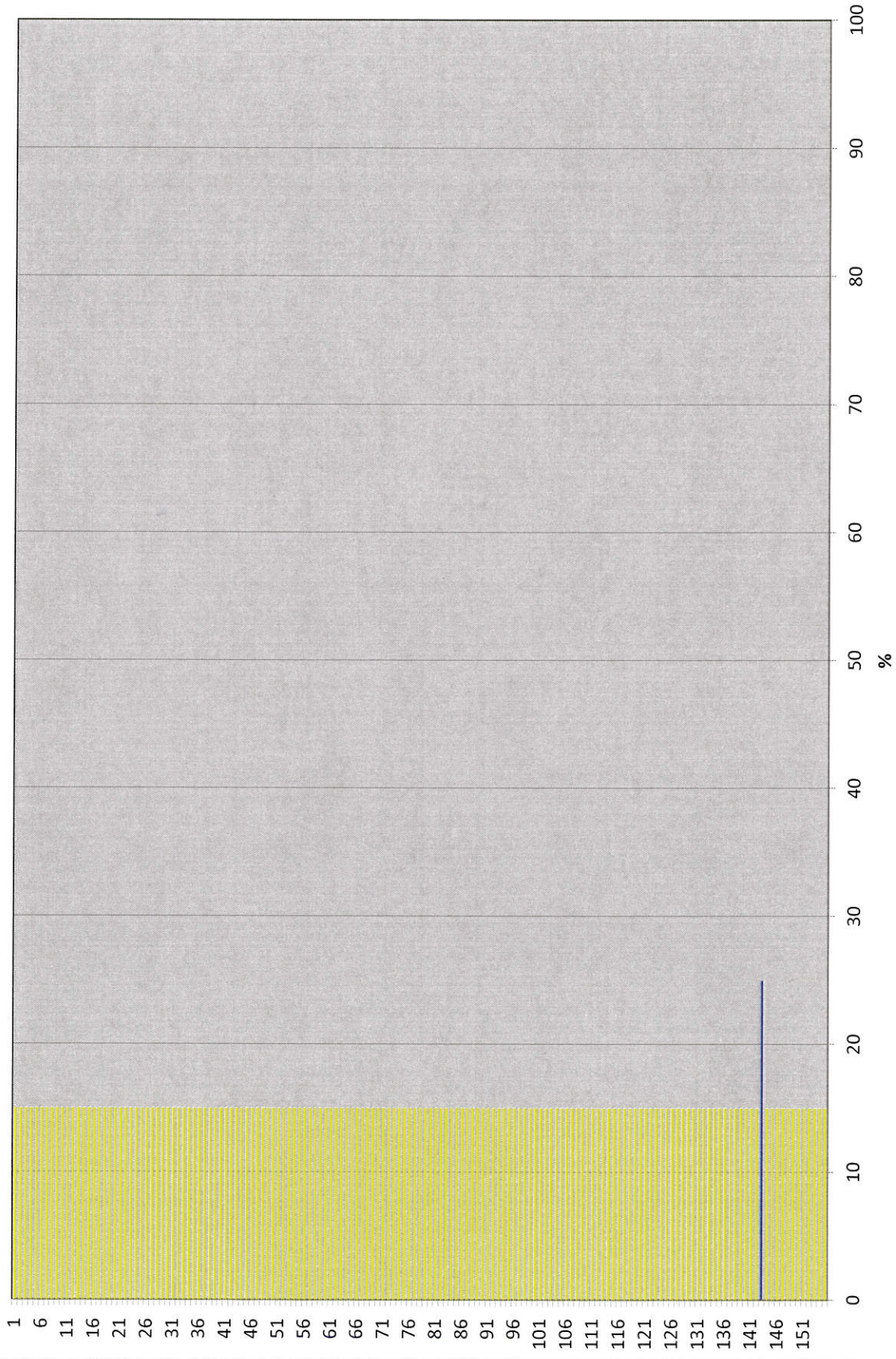
Wall Loss 1 to 155



Pitting 1 to 155



Wall Loss 1 to 155



Operator: Strategic Oil & Gas Ltd.

Reporting To: Ken Nikiforuk

Consultant: Shayne Stahl

 Tel2:
 Tel1: (780) 841-8106

UWI: 300A056010117300		WELL: Strategic et alCameron A-05		DATE: 21-Feb-2019	
24 Hr Summary: Killed well, removed wellhand and installed BOPs. Could not get lag screws					
Formation: Keg River		Surf Loc: A-05 60-10N 117-30W		Licence: 376	
Objective: Suspend well as per OROGO guidelines		Serv Rig Start: 20-Feb-2019		Serv Rig End: 23-Feb-2019	
Operations at 6:00: Repair lag screws, kill well, unset packer.		AFE #: 19WRCAM010		AFE Estimate: \$160,570.00	
Daily Cost: \$16,459		Previous Cumulative Cost: \$40,083		Cum Cost: \$56,542	
Ground:	775.10 m	KB To TH	3.30 m	Open Hole:	mKB
KB to Grd:	3.80 m	Tubing:	60.3 mm	Bot at:	1478 m
TD (MD):	1,514.60 m	Casing:	139.7 mm	Set at:	1514.6 m
PBTD:	1,513.60 m	Liner:	mm	Top at:	m
BOP Drill: yes		BOP Press Test: yes		Function Test: yes	
SITP: 7420 kPa		SICP: 6480 kPa		SCV: kPa H ₂ S %	

Remarks:

Time From	Time To	Hours	Code	Comments
07:00	07:30	0.5	SAFE	Conducted crew safety and operations meeting. Swept lease for LEL's and H ₂ S. Function tested crown saver and air kills.
07:30	10:00	2.5	KILL	Bottom master valve was seized, greased stem and heated with steam, slowly worked valve open. Bled off tbg gas head to p-tank. Tbg bled down to 450 kpa, built back up to 7400 kpa when shut in. Pumped 5.0 m ³ fresh water down tbg. Bled off csg gas head to p-tank to 0. Total gas flared over 1 hour was 2.415 E ³ M ³ . Pumped 15.0 m ³ fresh water down csg.
10:00	12:00	2	BOPS	Conducted accumulator check, function tested blind rams, 60.3mm pipe rams and annular. Stump tested blind rams, 60.3mm pipe rams, line pipe and 2 safety valves to 1.4 and 21.0 MPA for 10 mins each. Tested annular to 1.4 and 7.0 MPA for 10 mins each. Removed wellhead and installed landing pup c/w safety valve. Installed BOPs. Tested ring gasket and 60.3mm pipe rams to 1.4 and 21.0 MPA for 10 mins each. Rigged up working floor and power tongs.
12:00	15:00	3	WLHD	Tried to remove lag screws, 2 came out, could not move the other 2. Secured well, drained pump and lines, SDFN.

Total: 8

Equipment on Location:

Reservoir Fluids Summary	Reset <input type="checkbox"/> Gas:	Daily: 2.415 10 ³ m ³ /d	Cum: 2.415 10 ³ m ³	Tubing volume: m ³		
	Cums <input type="checkbox"/> Oil or Condensate:	Daily: m ³	Cum: 0 m ³	Csg. ann vol: m ³		
	<input type="checkbox"/> Water:	Daily: m ³	Cum: 0 m ³	Open hole vol: m ³		
	Time Swabbed/Flowed:	Daily: 0.00 hrs	Cum: hrs	Total: 0 m ³		
Load Fluids	Reset <input type="checkbox"/> OIL	Used m ³	Cum 0 m ³	Rec m ³	Cum 0 m ³	To Rec 0 m ³
	Cums <input type="checkbox"/> WATER	Used 20 m ³	Cum 20 m ³	Rec m ³	Cum 0 m ³	To Rec 20 m ³
	<input type="checkbox"/> OTHER	Used m ³	Cum 0 m ³	Rec m ³	Cum 0 m ³	To Rec 0 m ³
Hours	Service Rig Hours	Daily 8.00 hrs	Cumulative 20.00 hrs	DownTime: hrs	Cumulative DownTime: hrs	
	Personnel on Location	Rig: 6	Service: 5	Company: 1	Total Personnel: 12	
	Weather: Cloudy	Temp -15 °C	Lease: Good	Roads: Good		
Manager:		Programmed By:				



Reporting To: Ken Nikiforuk

Consultant: Shayne Stahl

Tel1: (780) 841-8106

Version 1172