

**Strategic Oil & Gas Ltd.**  
**Final Well Operations Report**  
**Strategic et al Cameron J-74**  
**Well ID – 2032**  
**300/J74601011715/0**

- Feb 7, 2019 :** Inject 1000 liters of methanol into pig sender. Performed three cleaning pig runs with air. Performed batch run with 120 liters of inhibitor (1 part CRO9809 and 2 parts diesel). Installed spec blind on pipeline at J-74. Flare volume was 0.02 e3m3 in 20 minutes.
- Feb 8, 2019 :** Tank truck on site at H-03 to empty 25.0 m3 of pipeline fluid from P-tank. Haul to Tervita Rainbow Lake.
- Feb 18, 2019 :** MIRU Global #5.
- Feb 19, 2019 :** SICP = 5257 kPa. SITP = 6 kPa. Performed SCVF test for 10 minutes. No bubbles. Unseated BHP. Pumped 4.5 m3 fresh water down tubing. Pumped 15.0 m3 fresh water down casing. Pulled and laid down rods.
- Feb 20, 2019 :** Installed and pressure tested BOP's. Unset anchor. Pull and lay down tubing. Inspect on the way out of the hole ( yellow – 140, blue – 9, green – 0 and red – 11 ). RIH with 139.7 mm 10K permanent bridge plug. Land at 1413.0 mKB. Filled tubing with 4.35 m3 fresh water and pressured up to 14000 kPa to set bridge plug. Pumped 9.0 m3 fresh water down casing. Pressure test bridge plug to 7000 kPa and would bleed down 700 kPa in five minutes. Let wellbore settle overnight.
- Feb 21, 2019 :** Fill casing with 0.2 m3 fresh water. Pressure test bridge plug to 7000 kPa for 15 minutes. Solid test. Mixed 0.5 m3 of 1900 kg/m3 cement. Circulated down tubing followed by 4.25 m3 inhibited fresh water. Rotate out of BP and lay down six joints tubing. Reverse circulated 17.0 m3 inhibited fresh water ( 0.5% CRW-132 ). No cement in returns. Cement top at 1373.0 mKB. Pull and lay down tubing. Topped up casing with 300 liters diesel followed by 1.0 m3 50/50 inhibited methanol water.
- Feb 6, 2019 :** Remove BOP's, install wellhead and rig out.



March 21, 2019

## WELL TERMINATION RECORD

### INSTRUCTIONS:

1. Complete both pages.
2. Send one electronic copy of this form and supporting technical documentation by email to [orogo@gov.nt.ca](mailto:orogo@gov.nt.ca).
3. Send two signed hard copies of this form and supporting technical documentation by courier to:  
 Chief Conservation Officer  
 Office of the Regulator of Oil and Gas Operations  
 4th floor Northwest Tower  
 5201 50th Avenue  
 Yellowknife NT X1A 3S9

### WELL INFORMATION

Well Name	Strategic et al Cameron J-74	Operator	Strategic Oil & Gas Ltd.
Well Type	Development Well (if Other, specify _____)	Contractor	Global Well Servicing Rig 5
Well Identifier	2032	Current Well Status	Suspended

### RELATED LICENCES AND AUTHORIZATIONS

Operating Licence No.	NWT-OL-2014-007	Operations Authorization	OA - 1237-001
PRA Licence No.	Production Licence 013	Approval to Alter Condition of Well	ACW - 2018-008

### LOCATION INFORMATION

Coordinates      Datum: NAD27 (if Other, please specify \_\_\_\_\_)

Surface	Lat 60 ° 3 ' 38 "	Long 117 ° 28 ' 55 "
Bottom Hole	Lat 60 ° 3 ' 38 "	Long 117 ° 28 ' 55 "

Region: Dehcho    Unit J      Section 74      Grid 60-10 117-15

### ACTIVITY INFORMATION

Target Formation(s)	Sulphur Point	Field/Pool(s)	/
Elevation KB/RT	775.3 m	Ground Level / Seafloor	771.1 m
Spud/Re-entry Date	Feb 7, 2019 days	Total Depth	1465.0 m KB
Rig Release Date	Feb 22, 2019	Total Vertical Depth	1465.0 m KB

### CASING AND CEMENTING PROGRAM

O.D. (mm)	Weight (kg/m)	Grade	Setting Depth (m KB)	Cementing (m³)
219.1	35.72	J-55	435.0	34.0 tonnes
139.7	23.07	J-55	1465.0	36.0 tonnes



**PLUGGING PROGRAM**

Type of Plug	Interval (m KB)	Felt	Setting Depth (m KB)	Cementing (m <sup>3</sup> )
Bridge	1373.0-1413.0	No	1413.0	0.5
Select	-	Select		
Select	-	Select		
Select	-	Select		


**PERFORATION**

Interval (m KB)	Comments
1420.0-1429.0	Sulphur Point - abandoned zone
-	
-	
-	

**OTHER**

Lost Circulation/Overpressure Zones	
Equipment Left on Site (Describe)	Oil well production equipment
Provision for Re-entry (Describe and attach sketch)	
Other Downhole Completion/Suspension	
Additional Comments	

***"I certify that the information provided on this form is true and correct"***

Name	Ken Nikiforuk	Phone	(403) 767-2944 Ext
Title	Completions Manager	E-Mail	knikiforuk@sogoil.com
Operator	Strategic Oil & Gas Ltd		
Signature	 Responsible Officer of Company	Date	March 21, 2019

**OROGO use only**
 Unique Well Identifier 30 /        -        -        /         
 (eg. 300 / A01 60-00 120-00 / 0)

## Final Installation Report

Company	STRATEGIC OIL AND GAS		Reference		
Prepared for	JACK HARVEY	Client #	403-5968084	Location	300J746010117150
Sales Rep	DAVE BORLE	Vendor #			
Service Center	HIGH LEVEL	Drawn by	MATT FISCHER	Date	FEB-21-2019
				Page	1

TUBULAR	Size	Weight	Grade	Thread	Depth
Casing 1	219mm	35.72	J-55	ST&C	435.0
Casing 2	139.7mm	23.07	J-55	LT&C	1465.0
Tubing	73mm	9.67	J-55	EUE	NO TUBING IN WELL

ITEM	DESCRIPTION	I.D.	O.D.	Length (m)	Depth (m)
A.	SULPHUR POINT CASING PERFORATIONS				
B.	SULPHUR POINT CASING PERFORATIONS				
C.	139.7mm 69MPA HYDRO-MECHANICAL TUBING SET BRIDGE PLUG. CENTER OF ELEMENT STACK SET @ 14.13.0mKB	N/A	117.0	0.43m	
D.	FOURY METERS OF 1901KG/M3 OF CLASS "G" OILWELL CEMENT				
ALL DEPTH ARE mKB					

## NOTES

RAN IN HOLE WITH 73.0mm HYDRO MECHANICAL BRIDGE PLUG AND COLLAR LOCATOR. LOCATED CASING COLLAR @ 1409.60mKB. HAD - 0.31m TALLY TO WIRELINE CORRECTION. POSITIONED PIPE WITH 1.0 METER OF STICK UP TO PUT CENTER OF ELEMENT STACK OF PERMANENT BRIDGE PLUG @ 1413.0mKB. PRESSURED UP TUBING TO 14MPa. PULLED 14,000daN TENSION INTO BRIDGE PLUG TO PACK OFF. SLACKING OFF 7,000daN COMPRESSION. FILLED CASING WITH FRESH WATER. PRESSURE UP TO 7MPa—15-MIN. GOOD TEST. ROTATED OFF BRIDGE PLUG. CIRCULATED WELL OVER TO 1% INHIBITED FLUIDS. MIXED 190 LITERS OF 1901/KG/M3 CLASS "G" OIL WELL CEMENT AND CIRCULATED DOWN TUBING TO PLACE ONTOP OF BRIDGE PLUG. PULLED OUT OF HOLE WITH TUBING. CAPPED WELL WITH 300 LITERS OF DIESEL TO WINTERIZE WELL.

This document is confidential correspondence between our company and its customer. It may not be reproduced in any form, in whole or in part, by any means including any electronic format, nor its contents disclosed to anyone but our employees and employees of our customer.

435.00 m

1373.00 m

1413.00 m

1420.00 m

1425.00 m

1425.00 m

1429.00 m

1465.00 m

D

C

B

A



Tel2:  
Tel1: (780) 830-8303

Remarks:									
----------	--	--	--	--	--	--	--	--	--

Total:	3
--------	---

Equipment on Location:

Hours	Service Rig Hours	Daily 3.00 hrs	Cumulative 50.50 hrs	DownTime: hrs	Cumulative DownTime: hrs
	Personnel on Location	Rig: 6	Service: 7	Company: 1	Total Personnel: 14
	Weather: overcast	Temp -18 °C	Lease: Snow Cleared		Roads: Ice roads

Manager:	Programmed By:
----------	----------------



## Daily Abandonment Report

Operator: Strategic Oil & Gas Ltd.

Reporting To: Ken Nikiforuk

Consultant: Kurt Hewitt

Tel2:

Tel1: (780) 830-8303

UWI: 300j746010117150				WELL: Strategic Et Al Cameron J-74				DATE: 21-Feb-2019			
24 Hr Summary: PT BP. POOH with setting tool. Rig out and prepare for morning rig move								END: 22-Feb-2019			
Formation: Sulphur Point				Surf Loc: 300J746010117150				Licence: 2032		Day #: 6	
Objective: Abandon Sulphur Point Zone			Abandonment Type: Downhole			Serv Rig Start: 18-Feb-2019			Serv Rig End		
Operations at 6:00 : PT BP. POOH. Rig out, Prep for morning move						AFE #: 19ABCAM008		AFE Estimate:		\$176,492.00	
Daily Cost:		\$22,021		Previous Cumulative Cost:				\$104,149		Cum Cost: \$126,170	
Ground:	771.10	m	KB To TH	m	Open Hole:	mKB		Date	Perf Formation	Top	Base
KB to Grd:	4.20	m	Tubing:	73 mm	Bot at:	1420	m				
TD (MD):	1,465.00	m	Casing:	139.7 mm	Set at:	1465	m				
PBTD:	1,449.70	m	Liner:	mm	Top at:		m				
BOP Drill:			BOP Press Test: yes			Function Test: yes					
SITP:	330	kPa	SICP:	40	kPa	SCV:	0 kPa	H <sub>2</sub> S	0.6	%	

Remarks:

[illegible]

---

Total: 9.5

Equipment on Location:

Reservoir Fluids Summary	Reset	<input type="checkbox"/> Gas:	Daily:	10 <sup>3</sup> m³/d	Cum:	0 10 <sup>3</sup> m³	Tubing volume:		m³				
	Cums	<input type="checkbox"/> Oil or Condensate:	Daily:	m³	Cum:	0 m³	Csg. ann vol:		m³				
		<input type="checkbox"/> Water:	Daily:	m³	Cum:	0 m³	Open hole vol:		m³				
	Time Swabbed/Flowed:		Daily:	0.00 hrs	Cum:	hrs	Total:		0 m³				
Load Fluids	Reset	<input type="checkbox"/> OIL	Used	m³	Cum	0 m³	Rec	m³	Cum	0 m³	To Rec	0 m³	
	Cums	<input type="checkbox"/> WATER	Used	0.5 m³	Cum	33.35 m³	Rec	m³	Cum	0 m³	To Rec	33.35 m³	
		<input type="checkbox"/> OTHER	Used	m³	Cum	0 m³	Rec	m³	Cum	0 m³	To Rec	0 m³	
Hours	Service Rig Hours		Daily	9.50 hrs	Cumulative	47.50 hrs	DownTime:		hrs	Cumulative DownTime:			hrs
	Personnel on Location		Rig:	6	Service:	4	Company:		1	Total Personnel:			11
	Weather: overcast		Temp	-14 °C	Lease: Snow Cleared					Roads: Ice roads			
Manager:					Programmed By:								

Operator: Strategic Oil &amp; Gas Ltd.

Reporting To: Ken Nikiforuk

Consultant: Kurt Hewitt

Tel2:

Tel1: (780) 830-8303

UWI: 300J746010117150		WELL: Strategic Et Al Cameron J-74		DATE: 20-Feb-2019	
24 Hr Summary: Scope out prod tbg for integrity. RIH and Set and PT BP, Circulate cement					
Formation:		Surf Loc: 300J746010117150		Licence: 2032	
Objective: Abandon Sulphur Point Zone		Abandonment Type: Downhole		Serv Rig Start: 18-Feb-2019	
Operations at 6:00: Scope tbg. RIH and Set & PT BP. Circulate cement		AFE #: 19ABCAM008		AFE Estimate: \$176,492.00	
Daily Cost: \$21,398		Previous Cumulative Cost: \$82,751		Cum Cost: \$104,149	
Ground:	771.10 m	KB To TH:	m	Open Hole:	mKB
KB to Grd:	4.20 m	Tubing:	73 mm	Bot at:	1420 m
TD (MD):	1,465.00 m	Casing:	139.7 mm	Set at:	1465 m
PBTD:	1,449.70 m	Liner:	mm	Top at:	m
BOP Drill: yes		BOP Press Test: yes		Function Test: yes	
SITP:	vac kPa	SICP:	vac kPa	SCV:	0 kPa
				H <sub>2</sub> S	0.6 %

Remarks:

Time From	Time To	Hours	Code	Comments
07:00	07:30	0.5	SAFE	Conduct prejob safety and operational meeting with all personnel on location. Discussed working at heights and on unusually high wellheads. Repetitive motions. High work floors, high pressure lines, rotating equipment, working with 3rd party services, good communication.
07:30	07:45	0.25	SHUT	Read and record SITP - vac, SICP - vac.
07:45	09:45	2	BOPS	Function test BOP's. Good test. Stump test blind rams to 1.4 mpa and 21 mpa for 10 minutes each. Good Test. Change over pipe rams from 60.3mm to 73mm. Install landing joint c/w TIW safety valve and pressure test pipe rams to 1.4 mpa and 21 mpa. For 10 minutes each. Good test. Pressure test annular to 1.4 mpa and 7 mpa for 10 minutes each. Good test.
09:45	11:00	1.25	BOPS	Remove wellhead and install Landing joint c/w TIW safety valve. Pull tubing hanger and install 2' pup joint below for releasing tubing anchor. Install BOP's and pressure test ring gasket and pipe rams to 1.4 mpa and 21 mpa for 10 minutes each. Good test. Rig in work floor, catwalk and v-door and handling equipment.
11:00	14:30	3.5	TRPTBG	POOH laying down pipe sideways while inspecting with CJ-CSM for integrity. 140 Yellow band, 9 blue and 1 red.
14:30	18:00	3.5	TRPTBG	Tally, drift, make up and RIH, tallying and picking up from catwalk. Locate casing collars @ 1382.5, 1396.0 & 1409.5 mkb. Get on depth (correlated to Precision's Perforating Log dated March 22, 2006) Fill tubing with 4.35m <sup>3</sup> of fresh water. Pressure up 14 mpa and set BP. Pull 12,000 daN over string weight to packoff element. Set BP centre element at 1413.0 mkb.
18:00	19:00	1	PTST	Fill casing with fresh water. Took 9.0m <sup>3</sup> to fill. Pressure test to 7000 kpa for 15 minutes had a steady 700 kpa bleed down every 5 minutes hours after filling. Decided to let air

Total: 13

Equipment on Location:

Reservoir Fluids Summary	<input type="checkbox"/> Gas:	Daily:	10 <sup>3</sup> m <sup>3</sup> /d	Cum:	0 10 <sup>3</sup> m <sup>3</sup>	Tubing volume:	m <sup>3</sup>
	<input type="checkbox"/> Oil or Condensate:	Daily:	m <sup>3</sup>	Cum:	0 m <sup>3</sup>	Csg. ann vol:	m <sup>3</sup>
	<input type="checkbox"/> Water:	Daily:	m <sup>3</sup>	Cum:	0 m <sup>3</sup>	Open hole vol:	m <sup>3</sup>
	Time Swabbed/Flowed:	Daily:	0.00 hrs	Cum:	hrs	Total:	0 m <sup>3</sup>
Load Fluids	<input type="checkbox"/> OIL	Used	m <sup>3</sup>	Cum	0 m <sup>3</sup>	Rec	m <sup>3</sup>
	<input type="checkbox"/> WATER	Used	13.35 m <sup>3</sup>	Cum	32.85 m <sup>3</sup>	Rec	m <sup>3</sup>
	<input type="checkbox"/> OTHER	Used	m <sup>3</sup>	Cum	0 m <sup>3</sup>	Rec	m <sup>3</sup>
Hours	Service Rig Hours	Daily	13.00 hrs	Cumulative	38.00 hrs	DownTime:	hrs
	Personnel on Location	Rig:	6	Service:	5	Company:	1
	Weather: Sunny	Temp	-14 °C	Lease: Snow Cleared	Roads: Ice roads		
Manager:		Programmed By:					





Tel1: (780) 830-8303

UWI: 300j746010117150	WELL: Strategic Et Al Cameron J-74	Day #: 5	DATE: 20-Feb-2019
-----------------------	------------------------------------	----------	-------------------





114-172 Clearview Drive Red Deer County, AB T4E 0A1

Field Ticket  
Contact  
Phone

P92025

CHAD ROOKES

780-512-5009

#### Customer Information

Company Name	STRATEGIC OIL&GAS	Date	February 20, 2019
Surface Location	J-74	AFE No.	
UWI	300J746010117150	Contract	
Rig Name & #	GLOBAL#5	Co. Rep	JACK HARVEY
Area	Peace River, AB	Code #	

#### Wellhead Tubing Inspection

Qty	Description	Unit Price	Total
420	Kms From Base & Return	\$ 1.50	\$ 630.00
149	Joints of 73.0mm, 9.67Kg, J55, EUE Tubing Inspected	\$ 15.00	\$ 2,235.00

Sub Total \$ 2,865.00

10% Discount \$ -286.50

New Sub Total \$ 2,578.50

GST \$ 128.93

Total \$ 2,707.43

Ultra Sonic Measurements		
Jt #	Wall Min	Wall Max
1	0.201	0.207
60	0.200	0.207
120	0.196	0.204

Head	60H05
Console	B0002
T-MGN	.7
R-WDS	2.3

0-15%	Yellow	138
16-30%	Blue	11
31-49%	Green	0
50+%	Red	0
Total		149

Order of Tubing Pulled	
145	73mm J-55 Tubing
1	ANCHOR
4	73mm J-55 Tubing
1	PSN
1	PERF TAIL JOINT\

Notes	Time Requested	10:00 AM	Inspection Start Time	11:00 AM
Small amount of pitting at bottom				

Inspector TYLER AHEARN

Customer

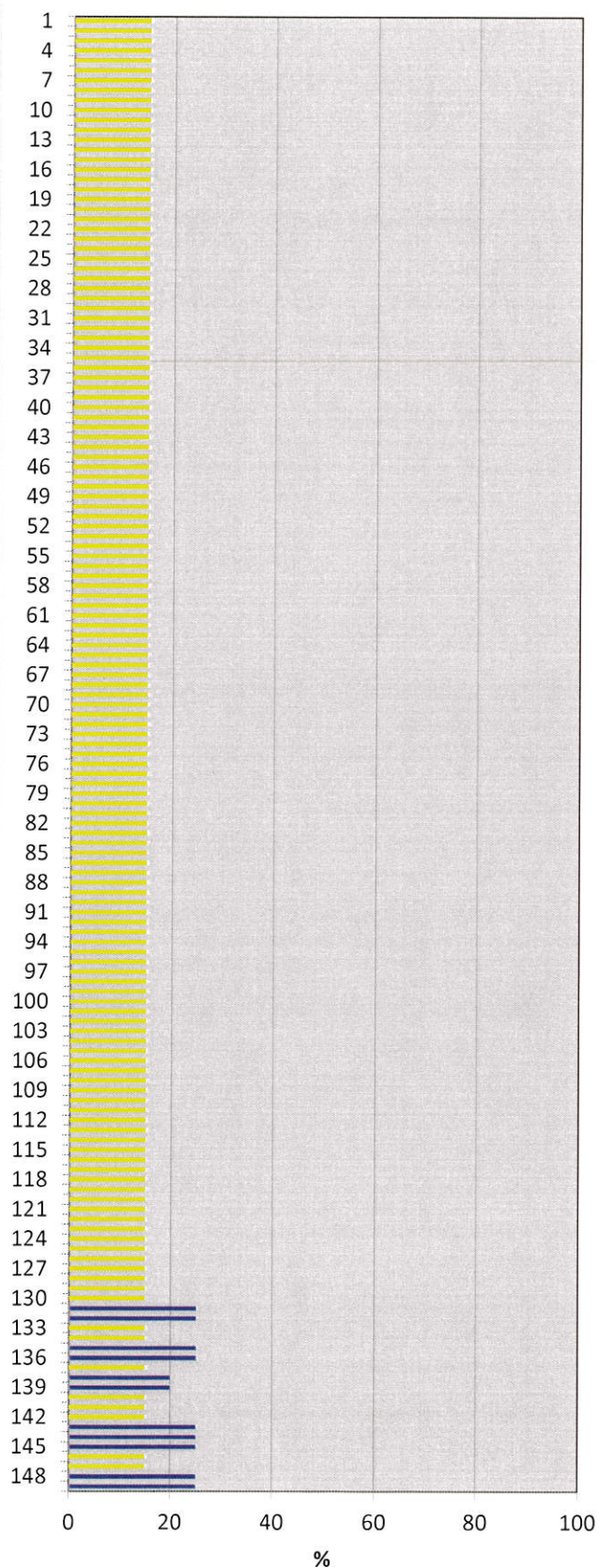
Jt#	Wall Loss	Pitting	Damage
1	15	15	
1	Ultrasonic Wall Min: 0.201 Max: 0.207		
2	15	15	
3	15	15	
4	15	15	
5	15	15	
6	15	15	
7	15	15	
8	15	15	
9	15	15	
10	15	15	
11	15	15	
12	15	15	
13	15	15	
14	15	15	
15	15	15	
16	15	15	
17	15	15	
18	15	15	
19	15	15	
20	15	15	
21	15	15	
22	15	15	
23	15	15	
24	15	15	
25	15	15	
26	15	15	
27	15	15	
28	15	15	
29	15	15	
30	15	15	
31	15	15	
32	15	15	
33	15	15	
34	15	15	
35	15	15	
36	15	15	
37	15	15	
38	15	15	
39	15	15	
40	15	15	
41	15	15	
42	15	15	
43	15	15	
44	15	15	
45	15	15	
46	15	15	
47	15	15	
48	15	15	
49	15	15	
50	15	15	

Jt#	Wall Loss	Pitting	Damage
51	15	15	
52	15	15	
53	15	15	
54	15	15	
55	15	15	
56	15	15	
57	15	15	
58	15	15	
59	15	15	
60	15	15	
60	Ultrasonic Wall Min: 0.200 Max: 0.207		
61	15	15	
62	15	15	
63	15	15	
64	15	15	
65	15	15	
66	15	15	
67	15	15	
68	15	15	
69	15	15	
70	15	15	
71	15	15	
72	15	15	
73	15	15	
74	15	15	
75	15	15	
76	15	15	
77	15	15	
78	15	15	
79	15	15	
80	15	15	
81	15	15	
82	15	15	
83	15	15	
84	15	15	
85	15	15	
86	15	15	
87	15	15	
88	15	15	
89	15	15	
90	15	15	
91	15	15	
92	15	15	
93	15	15	
94	15	15	
95	15	15	
96	15	15	
97	15	15	
98	15	15	
99	15	15	
100	15	15	

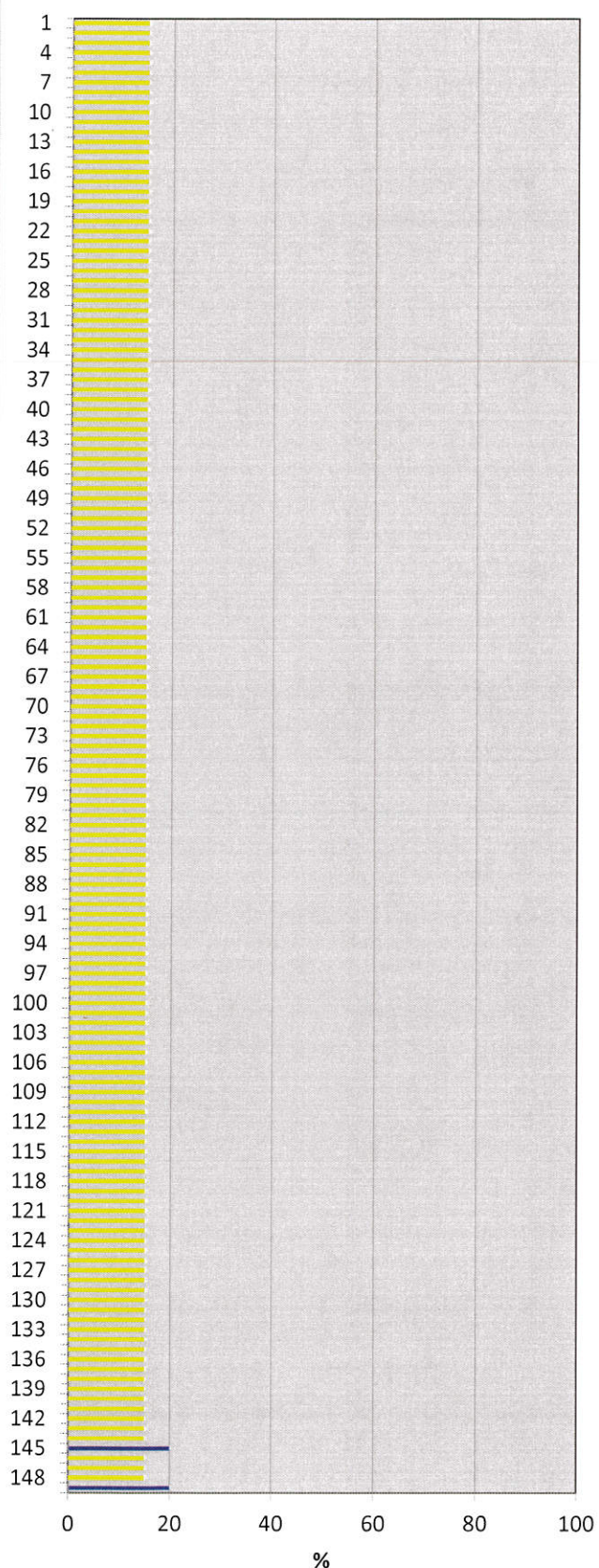


<b>Jt#</b>	<b>Wall Loss</b>	<b>Pitting</b>	<b>Damage</b>
101	15	15	
102	15	15	
103	15	15	
104	15	15	
105	15	15	
106	15	15	
107	15	15	
108	15	15	
109	15	15	
110	15	15	
111	15	15	
112	15	15	
113	15	15	
114	15	15	
115	15	15	
116	15	15	
117	15	15	
118	15	15	
119	15	15	
120	15	15	
120	Ultrasonic Wall Min: 0.196 Max: 0.204		
121	15	15	
122	15	15	
123	15	15	
124	15	15	
125	15	15	
126	15	15	
127	15	15	
128	15	15	
129	15	15	
130	15	15	
131	15	25	<b>Pitting</b>
132	15	25	<b>Pitting</b>
133	15	15	
134	15	15	
135	15	25	<b>Pitting</b>
136	15	25	<b>Pitting</b>
137	15	15	
138	15	20	<b>Pitting</b>
139	15	20	<b>Pitting</b>
140	15	15	
141	15	15	
142	15	15	
143	15	25	<b>Pitting</b>
144	15	25	<b>Pitting</b>
145	20	25	<b>Wall Loss &amp; Pitting</b>
146	15	15	
147	15	15	
148	15	25	<b>Pitting</b>
149	20	25	<b>Wall Loss &amp; Pitting</b>

Pitting 1 to 149

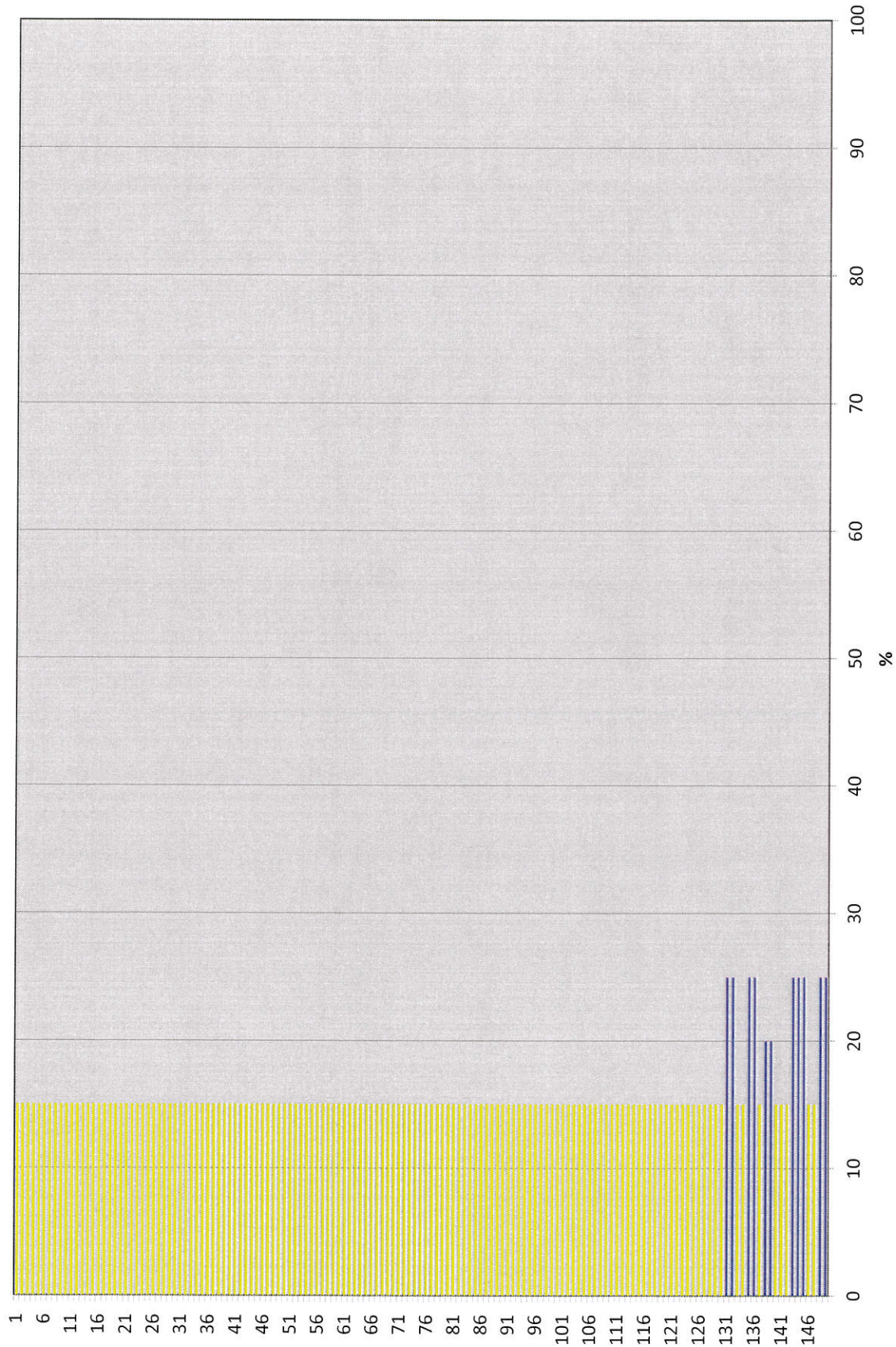


Wall Loss 1 to 149



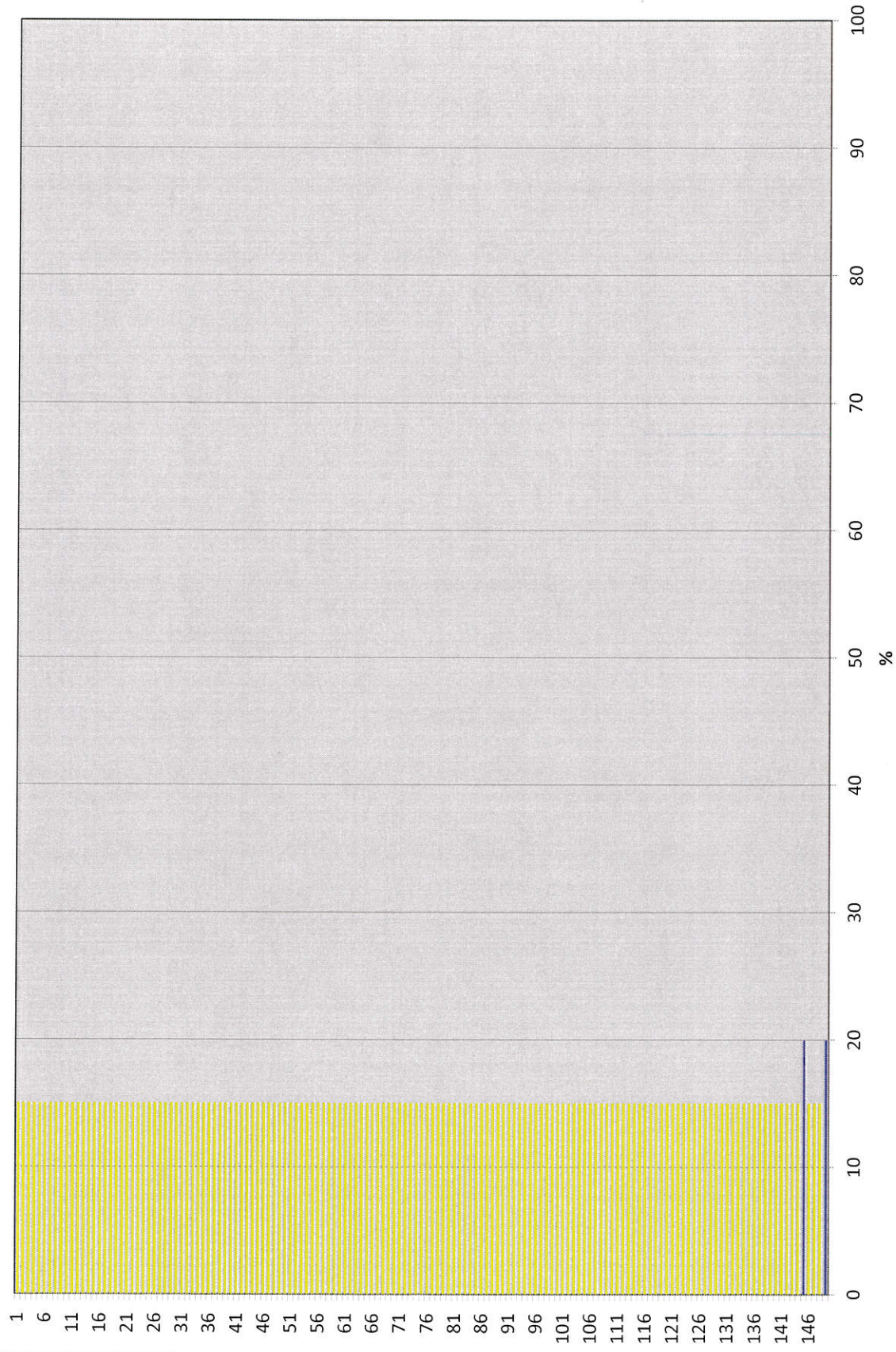


# Pitting 1 to 149





## Wall Loss 1 to 149





## Daily Abandonment Report

Operator: Strategic Oil & Gas Ltd.

Reporting To: Ken Nikiforuk

Consultant: Kurt Hewitt

Tel2:

Tel1: (780) 830-8303

UWI: 300j746010117150				WELL: Strategic Et Al Cameron J-74				DATE: 19-Feb-2019			
24 Hr Summary: Finish rigging in kill well. POOH laydown pump and rods. Remove flowline								END: 22-Feb-2019			
Formation:				Surf Loc: 300J746010117150				Licence: 2032		Day #: 4	
Objective: Abandon Sulphur Point Zone			Abandonment Type: Downhole			Serv Rig Start: 18-Feb-2019			Serv Rig End		
Operations at 6:00 : Rig in. Kill well. POOH with BHP & RODs. Remove flowline							AFE #: 19ABCAM008		AFE Estimate: \$176,492.00		
Daily Cost:			\$16,675		Previous Cumulative Cost:			\$66,076		Cum Cost: \$82,751	
Ground:		771.10	m	KB To TH		m	Open Hole:		mKB		
KB to Grd:		4.20	m	Tubing:		73	mm	Bot at:		1420	m
TD (MD):		1,465.00	m	Casing:		139.7	mm	Set at:		1465	m
PBTD:		1,449.70	m	Liner:			mm	Top at:			m
BOP Drill: yes			BOP Press Test: yes			Function Test: yes					
SITP:		6	kPa	SICP:		5257	kPa	SCV:		0	kPa
								H <sub>2</sub> S		0.6	%

Remarks:

Time From	Time To	Hours	Code	Comments
07:00	07:30	0.5	SAFE	Conduct pre job safety and operational meeting with all personnel on location. Discussed and reviewed incident from yesterday. Discussed good communication, housekeeping, high pressure lines, H2S, rotating equipment, Suspended loads.
07:30	07:45	0.25	SHUT	Read and Record SICP-5257 kpa, SITP-6 kpa,
07:45	08:00	0.25	SCVF	Perform 10 minute bubble test. Zero bubbles in 10 minutes.
08:00	13:00	5	RIG	Finish rigging in pump lines, p-tank, and flare stack, air trailer. Wait on water truck to haul in and unload 30m³ of fresh water. Mix 20m³ of 0.5% CRW132 Inhibited fresh water.
13:00	13:30	0.5	PTST	Heat and pressure test surface lines to 1.4 mpa and 14 mpa for 10 minutes on each line. Good test.
13:30	15:00	1.5	KILL	Pick up and unseat pump. Pump 4.5m³ down tubing. Tubing on vac. Pump 13.0m³ of fresh water down casing. Shut in and monitor well. Both sides on vac.
15:00	18:00	3	TRPROD	Function test Rod BOP's. Good test. Pull and laydown polish rod and strip on ROD BOP and pressure test to 1.4 mpa and 7 mpa. Good test. POOH laying down Rods on to tarps.
18:00	19:00	1	WLHD	Dismantle flowline and cap wellhead valves. Position catwalk for laying down pipe.
19:00	19:30	0.5	SDFN	Secure well and location. SDFN.

Total:	12.5
--------	------

Equipment on Location:

Reservoir Fluids Summary	Reset <input type="checkbox"/> Gas:	Daily:	10 <sup>3</sup> m <sup>3</sup> /d	Cum:	0 10 <sup>3</sup> m <sup>3</sup>	Tubing volume:		m <sup>3</sup>				
	Cums <input type="checkbox"/> Oil or Condensate:	Daily:	m <sup>3</sup>	Cum:	0 m <sup>3</sup>	Csg. ann vol:		m <sup>3</sup>				
	<input type="checkbox"/> Water:	Daily:	m <sup>3</sup>	Cum:	0 m <sup>3</sup>	Open hole vol:		m <sup>3</sup>				
	Time Swabbed/Flowed:		Daily:	0.00 hrs	Cum:	hrs	Total: 0 m <sup>3</sup>					
Load Fluids	Reset <input type="checkbox"/> OIL	Used	m <sup>3</sup>	Cum	0 m <sup>3</sup>	Rec	m <sup>3</sup>	Cum	0 m <sup>3</sup>	To Rec	0 m <sup>3</sup>	
	Cums <input type="checkbox"/> WATER	Used	19.5 m <sup>3</sup>	Cum	19.5 m <sup>3</sup>	Rec	m <sup>3</sup>	Cum	0 m <sup>3</sup>	To Rec	19.5 m <sup>3</sup>	
	<input type="checkbox"/> OTHER	Used	m <sup>3</sup>	Cum	0 m <sup>3</sup>	Rec	m <sup>3</sup>	Cum	0 m <sup>3</sup>	To Rec	0 m <sup>3</sup>	
Hours	Service Rig Hours		Daily	12.50 hrs	Cumulative	25.00 hrs	DownTime:		hrs	Cumulative DownTime:		hrs
	Personnel on Location		Rig:	6	Service:	4	Company:		1	Total Personnel:		11
	Weather: Overcast/Snow		Temp	-16 °C	Lease: Snow Cleared					Roads: Ice roads		
Manager:				Programmed By:								

## Daily Abandonment Report

Operator: Strategic Oil & Gas Ltd.

Reporting To: Ken Nikiforuk

Consultant: Kurt Hewitt

Tel2:

Tel1: (780) 830-8303

UWI: 300j746010117150				WELL: Strategic Et Al Cameron J-74				DATE: 18-Feb-2019			
24 Hr Summary: MIRU Service rig and all support eq. Spot and fill 400's, Get heat to all eq. a								END: 22-Feb-2019			
Formation:				Surf Loc: 300J746010117150				Licence: 2032		Day #: 3	
Objective: Abandon Sulphur Point Zone			Abandonment Type: Downhole			Serv Rig Start: 18-Feb-2019			Serv Rig End		
Operations at 6:00: MIRU Service rig and all support equip.						AFE #: 19ABCAM008		AFE Estimate:		\$176,492.00	
Daily Cost:		\$33,597		Previous Cumulative Cost:		\$32,479		Cum Cost:		\$66,076	
Ground:	771.10	m	KB To TH	m	Open Hole:	mKB	Date	Perf Formation	Top	Base	
KB to Grd:	4.20	m	Tubing:	mm	Bot at:	m					
TD (MD):	1,465.00	m	Casing:	mm	Set at:	m					
PBTD:	1,449.70	m	Liner:	mm	Top at:	m					
BOP Drill:		BOP Press Test:			Function Test:						
SITP:	kPa	SICP:	kPa	SCV:	kPa	H <sub>2</sub> S	%				

Remarks:

[illegible]

Total:	6.5
--------	-----

Equipment on Location:

Reservoir Fluids Summary	Reset <input type="checkbox"/> Gas:	Daily:	10 <sup>3</sup> m <sup>3</sup> /d	Cum:	0 10 <sup>3</sup> m <sup>3</sup>	Tubing volume:		m <sup>3</sup>			
	Cums <input type="checkbox"/> Oil or Condensate:	Daily:	m <sup>3</sup>	Cum:	0 m <sup>3</sup>	Csg. ann vol:		m <sup>3</sup>			
	<input type="checkbox"/> Water:	Daily:	m <sup>3</sup>	Cum:	0 m <sup>3</sup>	Open hole vol:		m <sup>3</sup>			
	Time Swabbed/Flowed:		Daily:	0.00 hrs	Cum:	hrs	Total:	0 m <sup>3</sup>			
Load Fluids	Reset <input type="checkbox"/> OIL	Used	m <sup>3</sup>	Cum	0 m <sup>3</sup>	Rec	m <sup>3</sup>	Cum	0 m <sup>3</sup>	To Rec	0 m <sup>3</sup>
	Cums <input type="checkbox"/> WATER	Used	m <sup>3</sup>	Cum	0 m <sup>3</sup>	Rec	m <sup>3</sup>	Cum	0 m <sup>3</sup>	To Rec	0 m <sup>3</sup>
	<input type="checkbox"/> OTHER	Used	m <sup>3</sup>	Cum	0 m <sup>3</sup>	Rec	m <sup>3</sup>	Cum	0 m <sup>3</sup>	To Rec	0 m <sup>3</sup>
Hours	Service Rig Hours		Daily	12.50 hrs	Cumulative	12.50 hrs	DownTime:	hrs	Cumulative DownTime:	hrs	
	Personnel on Location		Rig:	6	Service:	10	Company:	1	Total Personnel:	17	
	Weather: Overcast/Snow		Temp	-22 °C	Lease: Snow Cleared				Roads: Ice roads		
Manager:			Programmed By:								





Tel1: (780) 830-8303

Remarks:									
----------	--	--	--	--	--	--	--	--	--

Total:	2
--------	---

	<input type="checkbox"/> Gas:	Daily:	10 <sup>3</sup> m <sup>3</sup> /d	Cum:	0 10 <sup>3</sup> m <sup>3</sup>	Tubing volume:	m <sup>3</sup>
--	-------------------------------	--------	-----------------------------------	------	----------------------------------	----------------	----------------

[illegible]

## Daily Abandonment Report

Operator: Strategic Oil & Gas Ltd.

Reporting To: Ken Nikiforuk

Consultant: Kurt Hewitt

Tel2:

Tel1: (780) 830-8303

[illegible]