

**Strategic Oil & Gas Ltd.**  
**Final Well Operations Report**  
**Strategic et al Cameron L-47**  
**Well ID – 1736**  
**300/L47601011730/0**

**Feb 16, 2019 :** MIRU Global #9.

**Feb 17, 2019 :** Performed SCVF test for 15 minutes. No bubbles. Bled off gas head ( 1.38 e3m3 in 45 minutes ). Unseated BHP and pumped 5.0 m3 fresh water down tubing. Pull and lay down rods and BHP. Pump 13.0 m3 fresh water down casing. Installed and pressure tested BOP's. Pumped 6.0 m3 fresh water down tubing. Unset anchor. SDFN.

**Feb 18, 2019 :** Pull and lay down tubing. Inspect on the way out of the hole ( yellow – 127, blue – 17, green – 2 and red – 0 ). Well started blowing gas. Pumped 7.0 m3 fresh water down casing. Gas was TSTM. RIH with 139.7 mm 10K permanent bridge plug. Landed BP at 1482.0 mKB. Filled tubing with 4.5 m3 fresh water and pressured up to 14000 kPa to set bridge plug. Pumped 4.0 m3 fresh water down casing. Pressure test BP to 7000 kPa for ten minutes. Solid test. Mixed 0.5 m3 of 1900 kg/m3 cement. Circulated down tubing followed by 4.2 m3 fresh water. Pulled up five joints and reverse circulated 17.5 m3 inhibited ( 0.5% CRW-132 ) fresh water. No cement in returns. Cement top at 1442.7 mKB. Pull and lay down 42 joints of tubing. SDFN.

**Feb 19, 2019 :** Pull and lay down remaining tubing. Remove BOP's and install wellhead. Topped up casing with 300 liters diesel and 1.5 m3 50/50 inhibited methanol water. Rig out.



March 21, 2019

## WELL TERMINATION RECORD

### INSTRUCTIONS:

1. Complete both pages.
2. Send one electronic copy of this form and supporting technical documentation by email to [orogo@gov.nt.ca](mailto:orogo@gov.nt.ca).
3. Send two signed hard copies of this form and supporting technical documentation by courier to:  
 Chief Conservation Officer  
 Office of the Regulator of Oil and Gas Operations  
 4th floor Northwest Tower  
 5201 50th Avenue  
 Yellowknife NT X1A 3S9

### WELL INFORMATION

Well Name	Strategic et al Cameron L-47	Operator	Strategic Oil & Gas Ltd.
Well Type	Development Well (if Other, specify _____)	Contractor	Global Well Servicing Rig 9
Well Identifier	1736	Current Well Status	Suspended

### RELATED LICENCES AND AUTHORIZATIONS

Operating Licence No.	NWT-OL-2014-007	Operations Authorization	OA - 1237-001
PRA Licence No.	Production Licence 003	Approval to Alter Condition of Well	ACW - 2018-016

### LOCATION INFORMATION

Coordinates      Datum: NAD27 (if Other, please specify \_\_\_\_\_)

Surface	Lat 60 ° 6 ' 31 "	Long 117 ° 39 ' 18 "
Bottom Hole	Lat 60 ° 6 ' 31 "	Long 117 ° 39 ' 18 "

Region: Dehcho    Unit L    Section 47    Grid 60-10 117-30

### ACTIVITY INFORMATION

Target Formation(s)	Keg River	Field/Pool(s)	/
Elevation KB/RT	723.0 m	Ground Level / Seafloor	718.9 m
Spud/Re-entry Date	Feb 16, 2019 days	Total Depth	1565.0 m KB
Rig Release Date	Feb 19, 2019	Total Vertical Depth	1565.0 m KB

### CASING AND CEMENTING PROGRAM

O.D. (mm)	Weight (kg/m)	Grade	Setting Depth (m KB)	Cementing (m <sup>3</sup> )
244.5	53.57	J-55	390.0	31.0 tonnes
139.7	20.83	J-55	1562.5	53.0 tonnes



**PLUGGING PROGRAM**

Type of Plug	Interval (m KB)	Felt	Setting Depth (m KB)	Cementing (m <sup>3</sup> )
Bridge	1442.7-1482.0	No	1482.0	0.5
Select	-	Select		
Select	-	Select		
Select	-	Select		

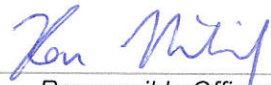
**PERFORATION**

Interval (m KB)	Comments
1487.0-1507.0	Keg River - abandoned zone
-	
-	
-	

**OTHER**

Lost Circulation/Overpressure Zones	
Equipment Left on Site (Describe)	Oil well production equipment
Provision for Re-entry (Describe and attach sketch)	
Other Downhole Completion/Suspension	
Additional Comments	

***"I certify that the information provided on this form is true and correct"***

Name	Ken Nikiforuk	Phone	(403) 767-2944 Ext
Title	Completions Manager	E-Mail	knikiforuk@sogoil.com
Operator	Strategic Oil & Gas Ltd		
Signature	 Responsible Officer of Company	Date	March 21, 2019

**OROGO use only**
 Unique Well Identifier 30 /        -        -        /         
 (eg. 300 / A01 60-00 120-00 / 0)

## Final Installation Report

Company	STRATEGIC OIL AND GAS		Reference	TICKET #	
Prepared for	SHAYNE STAHL	Client #	780-841-8106	Location 300/L476010117300	
Sales Rep	DAVID BORLE	Vendor #			
Service Center	HIGH LEVEL	Drawn by	MATT FISCHER	Date	18/02/2019
				Page	1

TUBULAR	Size	Weight	Grade	Thread	Depth
Casing	139.7mm		J-55	ST&C	1562.5
Tubing	mm				

ITEM	DESCRIPTION	I.D.	O.D.	Length (m)	Depth (m)
A.	KEG RIVER CASING PERFORATIONS				
B.	139.7mm 69MPa cement retainer				
C.	3.0m of hydromite cement				
D.	KEG RIVER CASING PERFORATIONS				
E.	139.7mm 69MPa permanent bridge plug.				
F.	3.0m of hydro mite cement				
G.	KEG RIVER CASING PERFORATIONS				
H.	KEG RIVER CASING PERFORATIONS				
I.	KEG RIVER CASING PERFORATIONS				
J.	139.7mm 69MPa permanent bridge plug.				
K.	0.50m3 of 1901 kg / "G" oilwell cement				

## NOTES

RUN IN HOLE WITH 139.7mm 69MPa HM-1 BRIDGE PLUG. LOCATED CASING COLLARS @ 1431.20mKB AND 1470.90mKB. Had -3.0m tubing to wireline correction. Corrected depth. Set permanent bridge plug with ease. Pulling 14,000daN tension. Slacking off 10,000daN compression. Filled casing with 6.5m3 of fresh water. Pressure tested casing to 7MPa—10min. Good test. No bleed down. Rotated off plug with ease. Mixed 0.50m3 of 1901kg/m3 oil well "G" slurry. Dumped down tubing. Displaced out of tubing with 4.5m3 of fresh water. Pulled 6 X 73.0mm tubing joints. Backwashed with 1% inhibited fresh water. Pulled out of hole. Recovered setting tool. Pumped 300 liters of diesel down casing. Topped up well with 1% inhibited fluid.

This document is confidential correspondence between our company and its customer. It may not be reproduced in any form, in whole or in part, by any means including any electronic format, nor its contents disclosed to anyone but our employees and employees of our customer.

390.00 m

1439.50 m

1482.00 m

1487.00 m

1488.50 m

1491.50 m

1493.50 m

1496.50 m

1499.00 m

1504.00 m

1507.00 m

1509.50 m

1525.00 m

1532.00 m

1535.00 m

1542.00 m

1547.00 m

1562.50 m

## Daily Abandonment Report

Operator: Strategic Oil & Gas Ltd.

Reporting To: Ken Nikiforuk

Consultant: Shayne Stahl

Tel:2

Tel1: (780) 841-8106

UWI: 300L476010117300		WELL: Strategic et al Cameron L-47				DATE: 19-Feb-2019				
24 Hr Summary: Laid down tbg, removed BOPs and installed wellhead, rigged out.								END: 20-Feb-2019		
Formation: Keg River				Surf Loc: L-47 60-10N 117-30W				Licence: 1736		Day #: 4
Objective: Abandon Keg River Zone			Abandonment Type: Downhole			Serv Rig Start: 16-Feb-2019		Serv Rig End: 19-Feb-2019		
Operations at 6:00: Move to A-05						AFE #: 19ABCAM010		AFE Estimate: \$215,342.00		
Daily Cost:		\$20,617		Previous Cumulative Cost:		\$100,397		Cum Cost: \$121,014		
Ground:		718.90 m		KB To TH 3.15 m		Open Hole:		mKB		
KB to Grd:		4.10 m		Tubing: 73 mm		Bot at:		m		
TD (MD):		1,565.00 m		Casing: 139.7 mm		Set at:		1562.5 m		
PBDT:		1,562.00 m		Liner: mm		Top at:		m		
BOP Drill:		BOP Press Test:				Function Test: yes				
SITP:		0 kPa		SICP:		0 kPa		SCV: kPa		
						H <sub>2</sub> S		%		

Remarks:

[illegible]

---

Total: 10.5

Equipment on Location:

Reservoir Fluids Summary	Reset <input type="checkbox"/> Gas:	Daily:	10 <sup>3</sup> m <sup>3</sup> /d	Cum:	1.38 10 <sup>3</sup> m <sup>3</sup>	Tubing volume:		m <sup>3</sup>			
	Cums <input type="checkbox"/> Oil or Condensate:	Daily:	m <sup>3</sup>	Cum:	0 m <sup>3</sup>	Csg. ann vol:		m <sup>3</sup>			
	<input type="checkbox"/> Water:	Daily:	m <sup>3</sup>	Cum:	0 m <sup>3</sup>	Open hole vol:		m <sup>3</sup>			
	Time Swabbed/Flowed:	Daily:	0.00 hrs	Cum:	hrs	Total:		0 m <sup>3</sup>			
Load Fluids	Reset <input type="checkbox"/> OIL	Used	m <sup>3</sup>	Cum	0 m <sup>3</sup>	Rec	m <sup>3</sup>	Cum	0 m <sup>3</sup>	To Rec	0 m <sup>3</sup>
	Cums <input type="checkbox"/> WATER	Used	1.3 m <sup>3</sup>	Cum	34.8 m <sup>3</sup>	Rec	m <sup>3</sup>	Cum	0 m <sup>3</sup>	To Rec	34.8 m <sup>3</sup>
	<input type="checkbox"/> OTHER	Used	m <sup>3</sup>	Cum	0 m <sup>3</sup>	Rec	m <sup>3</sup>	Cum	0 m <sup>3</sup>	To Rec	0 m <sup>3</sup>
Hours	Service Rig Hours	Daily	10.50 hrs	Cumulative	48.50 hrs	DownTime:	hrs	Cumulative DownTime:	hrs		
	Personnel on Location	Rig:	6	Service:	3	Company:	1	Total Personnel:	10		
	Weather: Snow	Temp	-18 °C	Lease:	Good			Roads:	Good		
Manager:				Programmed By:							



Operator: Strategic Oil &amp; Gas Ltd.

Reporting To: Ken Nikiforuk

Consultant: Shayne Stahl

Tel2:

Tel1: (780) 841-8106

UWI: 300L476010117300		WELL: Strategic et al Cameron L-47		DATE: 18-Feb-2019	
24 Hr Summary: POOH and inspected tbg, RIH and set BP at 1482 mKB, circ cement, circ to i					
Formation: Keg River		Surf Loc: L-47 60-10N 117-30W		Licence: 1736	
Objective: Abandon Keg River Zone		Abandonment Type: Downhole		Day #: 3	
Operations at 6:00: Lay down tbg, install wellhead, rig out.		AFE #: 19ABCAM010		AFE Estimate: \$215,342.00	
Daily Cost: \$32,291		Previous Cumulative Cost: \$68,106		Cum Cost: \$100,397	
Ground:	718.90 m	KB To TH	3.15 m	Open Hole:	mKB
KB to Grd:	4.10 m	Tubing:	73 mm	Bot at:	m
TD (MD):	1,565.00 m	Casing:	139.7 mm	Set at:	1562.5 m
PBTD:	1,562.00 m	Liner:	mm	Top at:	m
BOP Drill: yes		BOP Press Test:		Function Test: yes	
SITP:	0 kPa	SICP:	0 kPa	SCV:	kPa
				H <sub>2</sub> S	%

Remarks:

Time From	Time To	Hours	Code	Comments
07:00	07:30	0.5	SAFE	Conducted crew safety and operations meeting. Swept lease for LEL's and H <sub>2</sub> S. Function tested crown saver, air kills, 73.0mm pipe rams and annular.
07:30	11:00	3.5	TRPTBG	Picked up and removed tbg hanger. Rigged up tbg inspector. POOH and inspected tbg as per program, laid tbg down due to wellhead congestion. Conducted blowout drill, 48 seconds for shut in. Function tested blind rams. 127 - yellow, 17 - blue, 10 - green, 2 - red.
11:00	12:00	1	KILL	Well starting blowing gas, bled down gas head, pumped 7.0 m <sup>3</sup> fresh water down csg. Gas was TSTM.
12:00	16:00	4	TRPTBG	Made up, tallied and RIH with Tryton 139.7mm hydraulic set PBP, setting tool, MCL, 73.0mm tbg pup and 155 - jts 73.0mm tbg. Located collars at 1457.70 and 1470.90 mKB, negative 3.0m correction. Landed PBP at 1482.0 mKB corrected depth, filled tbg with 4.50 m <sup>3</sup> fresh water, pressured up to 14.0 MPA, pulled 14,000 daN over string weight and packed off elements. Filled csg with 4.0 m <sup>3</sup> and tested BP to 7.0 MPA for 10 mins. Rotated off of BP.
16:00	18:00	2	CIRC	Mixed up 500 liters 1900 kg/m <sup>3</sup> cement, poured down tbg and displaced with 4.20 m <sup>3</sup> fresh water. Pulled 5 - jts tbg, reverse circulated 17.50 m <sup>3</sup> 0.50% CRW-132 inhibited fresh water, no cement in returns. Calculated cement top at 1442.70 mKB based on 0.012729 m <sup>3</sup> /min volume in 139.7mm 20.83 kg/m csg.
18:00	19:30	1.5	TRPTBG	Laid down 42 - jts 73.0mm tbg. Secured well, drained pump and lines, SDFN.

Total: 12.5

Equipment on Location:

Reservoir Fluids Summary	<input type="checkbox"/> Gas:	Daily:	10 <sup>3</sup> m <sup>3</sup> /d	Cum:	1.38 10 <sup>3</sup> m <sup>3</sup>	Tubing volume:	m <sup>3</sup>
	<input type="checkbox"/> Oil or Condensate:	Daily:	m <sup>3</sup>	Cum:	0 m <sup>3</sup>	Csg. ann vol:	m <sup>3</sup>
	<input type="checkbox"/> Water:	Daily:	m <sup>3</sup>	Cum:	0 m <sup>3</sup>	Open hole vol:	m <sup>3</sup>
	Time Swabbed/Flowed:	Daily:	0.00 hrs	Cum:	hrs	Total:	0 m <sup>3</sup>
Load Fluids	<input type="checkbox"/> OIL	Used	m <sup>3</sup>	Cum	0 m <sup>3</sup>	Rec	m <sup>3</sup>
	<input type="checkbox"/> WATER	Used	15.5 m <sup>3</sup>	Cum	33.5 m <sup>3</sup>	Rec	m <sup>3</sup>
	<input type="checkbox"/> OTHER	Used	m <sup>3</sup>	Cum	0 m <sup>3</sup>	Rec	m <sup>3</sup>
Hours	Service Rig Hours	Daily	12.50 hrs	Cumulative	38.00 hrs	DownTime:	hrs
	Personnel on Location	Rig:	6	Service:	6	Company:	1
	Weather: Clear	Temp	-24 °C	Lease:	Good	Roads:	Good
Manager:		Programmed By:					



114-172 Clearview Drive Red Deer County, AB T4E 0A1

Field Ticket  
Contact  
Phone

P92024

CHAD ROOKES

780-512-5009

Customer Information

Company Name	STRATEGIC OIL&GAS	Date	February 18, 2019
Surface Location	L-47-60.10N1173W	AFE No.	
UWI	300L476010117300	Contract	
Rig Name & #	GLOBAL#9	Co. Rep	SHAYNE STAHL
Area	Peace River, AB	Code #	

Wellhead Tubing Inspection

Qty	Description	Unit Price	Total
450	Kms From Base & Return	\$ 1.50	\$ 675.00
156	Joints of 73.0mm, 9.67Kg, J55, EUE Tubing Inspected	\$ 15.00	\$ 2,340.00

Sub Total \$ 3,015.00

10% Discount \$ -301.50

New Sub Total \$ 2,713.50

GST \$ 135.68

Total \$ 2,849.18

Ultra Sonic Measurements		
Jt #	Wall Min	Wall Max
1	0.201	0.206
60	0.200	0.203
100	0.194	0.203
128	0.197	0.206

Head	60H05
Console	B0002
T-MGN	.7
R-WDS	2.3

0-15%	Yellow	127
16-30%	Blue	17
31-49%	Green	10
50+%	Red	2
Total		156

Order of Tubing Pulled	
153	73mm Tubing
1	ANCHOR
3	73mm Tubing
1	CUT OFF JOINT

Notes	Time Requested	7:30 AM	Inspection Start Time	7:30 AM
Scattered pitting at bottom				

Inspector TYLER AHEARN

Customer



Jt#	Wall Loss	Pitting	Damage
1	15	15	
1	Ultrasonic Wall Min: 0.201 Max: 0.206		
2	15	15	
3	15	15	
4	15	15	
5	15	15	
6	15	15	
7	15	15	
8	15	15	
9	15	15	
10	15	15	
11	15	15	
12	15	15	
13	15	15	
14	15	15	
15	15	15	
16	15	15	
17	15	15	
18	15	15	
19	15	15	
20	15	15	
21	15	15	
22	15	15	
23	15	15	
24	15	15	
25	15	15	
26	15	15	
27	15	15	
28	15	15	
29	15	15	
30	15	15	
31	15	15	
32	15	15	
33	15	15	
34	15	15	
35	15	15	
36	15	15	
37	15	15	
38	15	15	
39	15	15	
40	15	15	
41	15	15	
42	15	15	
43	15	15	
44	15	15	
45	15	15	
46	15	15	
47	15	15	
48	15	15	
49	15	15	
50	15	15	
Jt#	Wall Loss	Pitting	Damage

Jt#	Wall Loss	Pitting	Damage
51	15	15	
52	15	15	
53	15	15	
54	15	15	
55	15	15	
56	15	15	
57	15	15	
58	15	15	
59	15	15	
60	15	15	
60	Ultrasonic Wall Min: 0.200 Max: 0.203		
61	15	15	
62	15	15	
63	15	15	
64	15	15	
65	15	15	
66	15	15	
67	15	15	
68	15	15	
69	15	15	
70	15	15	
71	15	15	
72	15	15	
73	15	15	
74	15	15	
75	15	15	
76	15	15	
77	15	15	
78	15	15	
79	15	15	
80	15	15	
81	15	15	
82	15	15	
83	15	15	
84	15	15	
85	15	15	
86	15	15	
87	15	15	
88	15	15	
89	15	15	
90	15	15	
91	15	15	
92	15	15	
93	15	15	
94	15	30	Pitting
95	15	15	
96	15	15	
97	15	15	
98	15	15	
99	15	15	
100	15	15	
Jt#	Wall Loss		

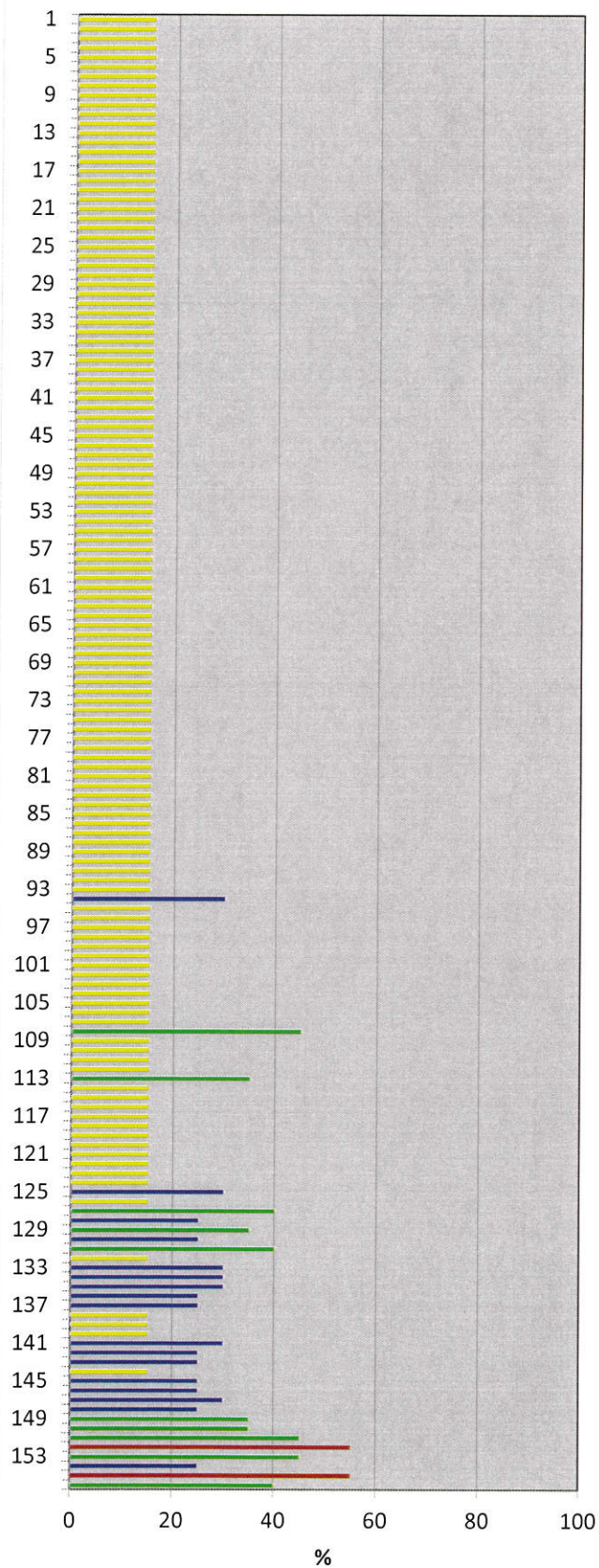


101	15	15	
102	15	15	
103	15	15	
104	15	15	
105	15	15	
106	15	15	
107	15	15	
108	15	45	Pitting
109	15	15	
110	15	15	
111	15	15	
112	15	15	
113	15	35	Pitting
114	15	15	
115	15	15	
116	15	15	
117	15	15	
118	15	15	
119	15	15	
120	15	15	
121	15	15	
122	15	15	
123	15	15	
124	15	15	
125	15	30	Pitting
126	15	15	
127	15	40	Pitting
128	15	25	Pitting
128	Ultrasonic Wall Min: 0.197 Max: 0.206		
129	15	35	Pitting
130	15	25	Pitting
131	15	40	Pitting
132	15	15	
133	15	30	Pitting
134	15	30	Pitting
135	15	30	Pitting
136	15	25	Pitting
137	15	25	Pitting
138	15	15	
139	15	15	
140	15	15	
141	15	30	Pitting
142	15	25	Pitting
143	15	25	Pitting
144	15	15	
145	15	25	Pitting
146	15	25	Pitting
147	15	30	Pitting
148	15	25	Pitting
149	15	35	Pitting
150	20	35	Wall Loss & Pitting

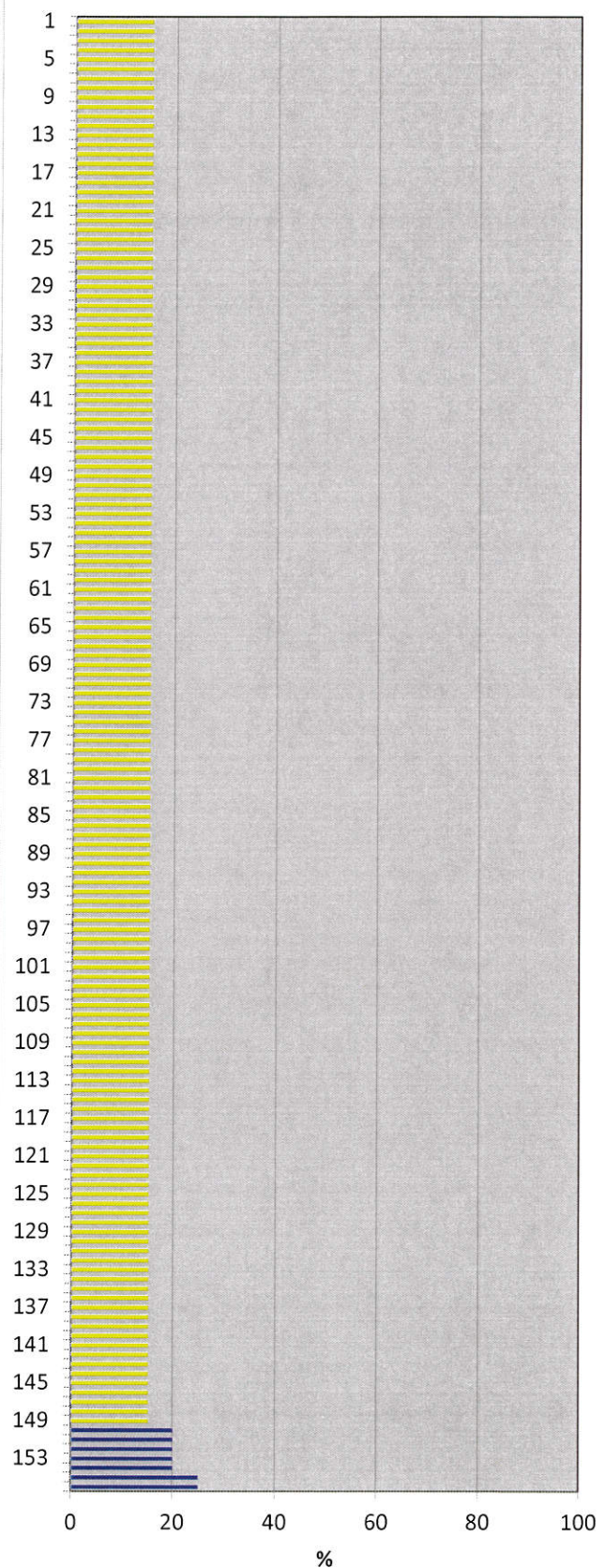
151	20	45	Wall Loss & Pitting
152	20	55	Wall Loss & Pitting
153	20	45	Wall Loss & Pitting
154	20	25	Wall Loss & Pitting
155	25	55	Wall Loss & Pitting
156	25	40	Wall Loss & Pitting



### Pitting 1 to 156

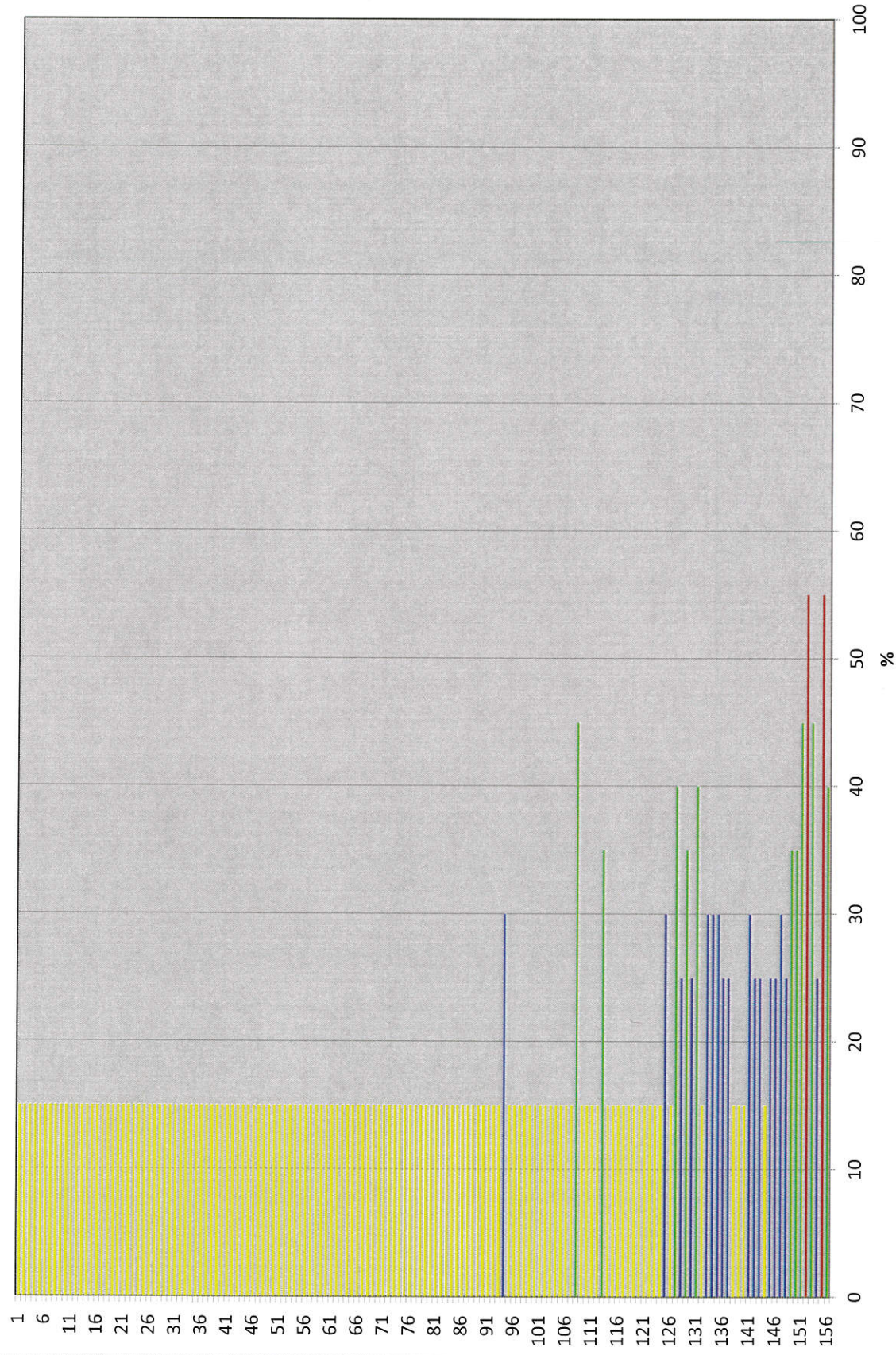


### Wall Loss 1 to 156



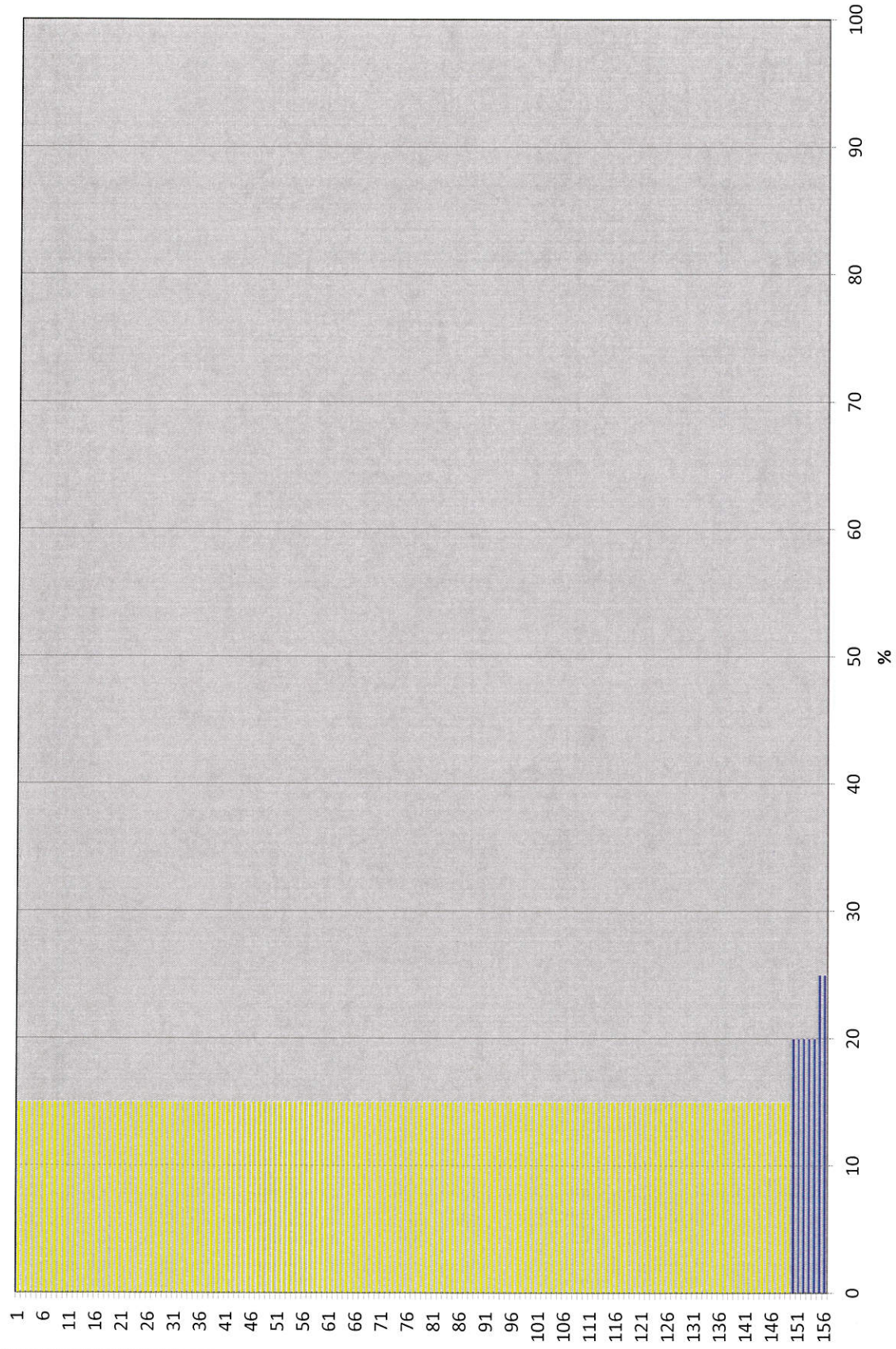


# Pitting 1 to 156





## Wall Loss 1 to 156





Operator: Strategic Oil &amp; Gas Ltd.

Reporting To: Ken Nikiforuk

Consultant: Shayne Stahl

 Tel2:  
 Tel1: (780) 841-8106

UWI: 300L476010117300		WELL: Strategic et al Cameron L-47		DATE: 17-Feb-2019	
24 Hr Summary: Rigged up, killed well, laid down rods, installed BOPs, unset anchor.				END: 20-Feb-2019	
Formation: Keg River		Surf Loc: L-47 60-10N 117-30W		Licence: 1736	
Objective: Abandon Keg River Zone		Abandonment Type: Downhole		Day #: 2	
Operations at 6:00: POOH and inspect tbg.		Serv Rig Start: 16-Feb-2019		Serv Rig End: 19-Feb-2019	
Daily Cost: \$21,872		Previous Cumulative Cost: \$46,234		Cum Cost: \$68,106	
Ground:	718.90 m	KB To TH:	3.15 m	Open Hole:	mKB
KB to Grd:	4.10 m	Tubing:	73 mm	Bot at:	1500 m
TD (MD):	1,565.00 m	Casing:	139.7 mm	Set at:	1562.5 m
PBTD:	1,562.00 m	Liner:	mm	Top at:	m
BOP Drill:		BOP Press Test: yes		Function Test: yes	
SITP:	17 kPa	SICP:	9200 kPa	SCV:	kPa H <sub>2</sub> S %

Remarks:

Time From	Time To	Hours	Code	Comments
07:00	07:30	0.5	SAFE	Conducted crew safety and operations meeting. Swept lease for LEL's and H <sub>2</sub> S. Function tested crown saver and air kills.
07:30	10:00	2.5	RIG	Completed rig up. Bubble tested scv, no bubbles in 15 mins.
10:00	12:30	2.5	KILL	Bled off tbq gas, tested tbq to 5.0 MPA. Unseated BHP and pumped 5.0 m <sup>3</sup> fresh water down tbq. No circulation up csg. Bled off csg gas head. Flared 1.38 E <sup>3</sup> M <sup>3</sup> total gas, no rate due to pressure decline. Flared for 45 mins.
12:30	15:30	3	TRPROD	Landed rod string on bottom, closed ratigans, stripped off stuffing box and stripped on rod BOPs, tested rod BOPs to 5.0 MPA. Unseated BHP, POOH and laid down rods as per program.
15:30	16:00	0.5	KILL	Pumped 13.0 m <sup>3</sup> fresh water down csg.
16:00	18:00	2	BOPS	Conducted accumulator check, changed rams to 73.0mm, function tested blind rams, 73.0mm pipe rams and annular. Stump tested blind rams, 73.0mm pipe rams, line pipe and 2 safety valves to 1.4 and 21.0 MPA, tested annular to 1.4 and 7.0 MPA, all tests held for 10 mins. Removed wellhead, picked up on tbq and installed 0.60m pup below tbq hanger. Tbg was in 4,500 daN tension, re-landed in 6,000 daN compression. Installed BOPs, tested ring gasket and 73.0mm pipe rams to 1.4 and 21.0 MPA, for 10 mins each.
18:00	20:00	2	RIG	Rigged up working floor and power tongs. Hung tarps. Changed handling equipment to 73.0mm. Unset tbq anchor. Secured well, drained pump and lines, SDFN.

Total: 13

Equipment on Location:

Reservoir Fluids Summary	<input type="checkbox"/> Gas:	Daily: 1.38 10 <sup>3</sup> m <sup>3</sup> /d	Cum: 1.38 10 <sup>3</sup> m <sup>3</sup>	Tubing volume:	m <sup>3</sup>
	<input type="checkbox"/> Oil or Condensate:	Daily: m <sup>3</sup>	Cum: 0 m <sup>3</sup>	Csg. ann vol:	m <sup>3</sup>
	<input type="checkbox"/> Water:	Daily: m <sup>3</sup>	Cum: 0 m <sup>3</sup>	Open hole vol:	m <sup>3</sup>
	Time Swabbed/Flowed:	Daily: 0.00 hrs	Cum: hrs	Total:	0 m <sup>3</sup>
Load Fluids	<input type="checkbox"/> OIL	Used m <sup>3</sup>	Cum 0 m <sup>3</sup>	Rec m <sup>3</sup>	Cum 0 m <sup>3</sup>
	<input type="checkbox"/> WATER	Used 18 m <sup>3</sup>	Cum 18 m <sup>3</sup>	Rec m <sup>3</sup>	Cum 0 m <sup>3</sup>
	<input type="checkbox"/> OTHER	Used m <sup>3</sup>	Cum 0 m <sup>3</sup>	Rec m <sup>3</sup>	Cum 0 m <sup>3</sup>
Hours	Service Rig Hours	Daily 13.00 hrs	Cumulative 25.50 hrs	DownTime:	hrs
	Personnel on Location	Rig: 6	Service: 4	Company: 1	Total Personnel: 11
	Weather: Clear	Temp -38 °C	Lease: Good	Roads: Good	
Manager:		Programmed By:			

## Daily Abandonment Report

Operator: Strategic Oil & Gas Ltd.

Reporting To: Ken Nikiforuk

Consultant: Shayne Stahl

Tel:2

Tel1: (780) 841-8106

UWI: 300L476010117300				WELL: Strategic et al Cameron L-47				DATE: 16-Feb-2019			
24 Hr Summary: <b>Moved on, spotted and partially rigged up.</b>								END: 20-Feb-2019			
Formation: Keg River				Surf Loc: L-47 60-10N 117-30W				Licence: 1736		Day #: 1	
Objective: Abandon Keg River Zone			Abandonment Type: Downhole			Serv Rig Start: 16-Feb-2019			Serv Rig End: 19-Feb-2019		
Operations at 6:00: Complete rig up, kill well, lay down rods.						AFE #: 19ABCAM010		AFE Estimate: \$215,342.00			
Daily Cost:		\$46,234		Previous Cumulative Cost:				\$0		Cum Cost: \$46,234	
Ground:	718.90	m	KB To TH	3.15	m	Open Hole:	mKB	Date	Perf Formation	Top	Base
KB to Grd:	4.10	m	Tubing:	73	mm	Bot at:	1500				
TD (MD):	1,565.00	m	Casing:	139.7	mm	Set at:	1562.5				
PBTD:	1,562.00	m	Liner:		mm	Top at:					
BOP Drill:			BOP Press Test:			Function Test:					
SITP:	kPa	SICP:	kPa	SCV:	kPa	H <sub>2</sub> S	%				
Remarks:											

Remarks:

[illegible]

Total:	12.5
--------	------

Equipment on Location:

Reservoir Fluids Summary	Reset <input type="checkbox"/> Gas:	Daily:	10 <sup>3</sup> m³/d	Cum:	0 10 <sup>3</sup> m³	Tubing volume:	m³				
	Cums <input type="checkbox"/> Oil or Condensate:	Daily:	m³	Cum:	m³	Csg. ann vol:	m³				
	<input type="checkbox"/> Water:	Daily:	m³	Cum:	m³	Open hole vol:	m³				
	Time Swabbed/Flowed:	Daily:	0.00 hrs	Cum:	hrs	Total:	0 m³				
Load Fluids	Reset <input type="checkbox"/> OIL	Used	m³	Cum	m³	Rec	m³	Cum	m³	To Rec	m³
	Cums <input type="checkbox"/> WATER	Used	m³	Cum	0 m³	Rec	m³	Cum	0 m³	To Rec	0 m³
	<input type="checkbox"/> OTHER	Used	m³	Cum	m³	Rec	m³	Cum	m³	To Rec	m³
Hours	Service Rig Hours	Daily	12.50 hrs	Cumulative	12.50 hrs	DownTime:	hrs	Cumulative DownTime:	hrs		
	Personnel on Location	Rig:	6	Service:	9	Company:	1	Total Personnel:	16		
	Weather: Overcast	Temp	-24 °C	Lease:	Good				Roads:	Good	
Manager:				Programmed By:							