

Strategic Oil & Gas Ltd.
Final Well Operations Report
Strategic et al Cameron C-74
Well ID – 1939
300/C74601011715/0

- Feb 4, 2019 :** MIRU Global #9. Performed SCVF test for 15 minutes. No bubbles. Bled off gas head (0.032 e3m3 in 30 minutes). Rods appear to be parted. Pump 18.0 m3 fresh water down casing
- Feb 5, 2019 :** Bled off gas head (1.716 e3m3 in 60 minutes). Pump 203 m3 fresh water down tubing. Pressure up to 5000 kPa. Unseated BHP and pumped 4.0 m3 fresh water down tubing. Pull and lay down BHP and rods. Pump 24.0 m3 fresh water down casing. Pumped 6.0 m3 fresh water down tubing.
- Feb 6, 2019 :** Bled off casing (gas volume = TSTM). Pumped 24.0 m3 fresh water down casing. Pumped 6.0 m3 fresh water down tubing. Installed and pressure tested BOP's. Unset anchor. Pull and lay down tubing. Inspect on the way out of the hole (yellow – 136, blue – 7, green – 6 and red – 0). RIH with 177.8 mm 10K permanent bridge plug. Landed BP at 1410.0 mKB. Filled tubing with 4.2 m3 fresh water and pressured up to 12000 kPa to set bridge plug. Pumped 26.0 m3 fresh water down casing. Casing would not fill up.
- Feb 7, 2019 :** Come off of bridge plug and POOH. RIH with test packer and set at 1395.0 mKB. Fill up casing with 14.0 m3 fresh water. Tested casing to 7000 kPa for ten minutes. Solid test. Unset packer and RIH to 1430.0 mKB (bridge plug from Feb 6, 2019 was not there). Set packer. Filled casing with 12.0 m3 fresh water. Pressure tested casing to 7000 kPa for 10 minutes. Solid test. POOH with 100 joints tubing and SDFN.
- Feb 8, 2019 :** POOH with 47 joints and lay down packer. RIH with 177.8 mm 10K permanent bridge plug. Landed BP at 1408.0 mKB. Filled tubing with 4.2 m3 fresh water and pressured up to 15000 kPa to set bridge plug. Bridge plug would not set. RIH with 20 joints. Land bridge plug at 1600.0 mKB and rotated off bridge plug. Pumped 5.0 m3 fresh water down tubing to ensure bridge plug was gone. POOH with tubing.
- Feb 9, 2019 :** MIRU Spectrum Wireline. RIH with 177.8 mm permanent bridge plug. Set plug at 1408.0 mKB. Filled casing with 16.0 m3 fresh water. Pressure tested to 7000 kPa for 10 minutes. Solid test. RIH with 73.0 mm tubing and tagged BP at 1408.0 mKB. Mixed 0.5 m3 of 1900 kg/m3 cement. Circulated down tubing followed by 4.0 m3 fresh water. Pulled up three joints and reverse circulated 5.0 m3 fresh water. No cement in returns. Cement top at 1383.7 mKB. Pulled 10 joints tubing and SDFN.

Feb 10, 2019 : RIH with 10 joints tubing. Circulated the hole over with 26.0 m3 inhibited fresh water (0.5% CRW-132). Pulled and laid down tubing. Remove BOP's and install wellhead. Topped up casing with 1.0 m3 50/50 inhibited methanol water. Rig out.

Feb 11, 2019 : Inject 1000 liters of methanol and wax solvent into pig sender. Performed three cleaning pig runs with air. Performed batch run with 90 liters of inhibitor (1 part CRO9809 and 2 parts diesel). Installed spec blind on pipeline at C-74. Flare volume was 0.015 e3m3 in 24 minutes.

Ken Mill
Mar 15, 2019

WELL TERMINATION RECORD

INSTRUCTIONS:

1. Complete both pages.
2. Send one electronic copy of this form and supporting technical documentation by email to orogo@gov.nt.ca.
3. Send two signed hard copies of this form and supporting technical documentation by courier to:
 Chief Conservation Officer
 Office of the Regulator of Oil and Gas Operations
 4th floor Northwest Tower
 5201 50th Avenue
 Yellowknife NT X1A 3S9

WELL INFORMATION

Well Name	Strategic et al Cameron C-74	Operator	Strategic Oil & Gas Ltd.
Well Type	Development Well (if Other, specify _____)	Contractor	Global Well Servicing Rig 9
Well Identifier	1939	Current Well Status	Suspended

RELATED LICENCES AND AUTHORIZATIONS

Operating Licence No.	NWT-OL-2014-007	Operations Authorization	OA - 1237-001
PRA Licence No.	Production Licence 013	Approval to Alter Condition of Well	ACW - 2018-004

LOCATION INFORMATION

Coordinates Datum: NAD27 (if Other, please specify _____)

Surface	Lat 60 ° 3 ' 13 "	Long 117 ° 29 ' 27 "
Bottom Hole	Lat 60 ° 3 ' 13 "	Long 117 ° 29 ' 27 "

Region: Dehcho Unit C Section 74 Grid 60-10 117-15

ACTIVITY INFORMATION

Target Formation(s)	Sulphur Point	Field/Pool(s)	/
Elevation KB/RT	779.0 m	Ground Level / Seafloor	774.6 m
Spud/Re-entry Date	Feb 4, 2019 days	Total Depth	1625.0 m KB
Rig Release Date	Feb 10, 2019	Total Vertical Depth	1625.0 m KB

CASING AND CEMENTING PROGRAM

O.D. (mm)	Weight (kg/m)	Grade	Setting Depth (m KB)	Cementing (m ³)
244.5	53.57	J-55	429.9	35.0 tonnes
177.8	34.23	J-55	1625.0	30.5 tonnes

PLUGGING PROGRAM

Type of Plug	Interval (m KB)	Felt	Setting Depth (m KB)	Cementing (m³)
Bridge	1383.7-1408.0	No	1408.0	0.5
Select	-	Select		
Select	-	Select		
Select	-	Select		


PERFORATION

Interval (m KB)	Comments
1421.0-1426.0	Sulphur Point - abandoned zone
-	
-	
-	

OTHER

Lost Circulation/Overpressure Zones	
Equipment Left on Site (Describe)	Oil well production equipment
Provision for Re-entry (Describe and attach sketch)	
Other Downhole Completion/Suspension	
Additional Comments	

"I certify that the information provided on this form is true and correct"

Name	Ken Nikiforuk	Phone	(403) 767-2944 Ext
Title	Completions Manager	E-Mail	knikiforuk@sogoil.com
Operator	Strategic Oil & Gas Ltd		
Signature	 Responsible Officer of Company	Date	March 15, 2019

OROGO use only

Unique Well Identifier

 30 / - - /
 (eg. 300 / A01 60-00 120-00 / 0)

REPORT BY :



Tel2:
Tel1: (780) 830-8303

Remarks:

Total:	10.5
--------	------

Reservoir Fluids Summary	Reset <input type="checkbox"/> Gas:	Daily:	10 ³ m ³ /d	Cum:	1.716 10 ³ m ³	Tubing volume:		m ³			
	Cums <input type="checkbox"/> Oil or Condensate:	Daily:	m ³	Cum:	0 m ³	Csg. ann vol:		m ³			
	<input type="checkbox"/> Water:	Daily:	m ³	Cum:	0 m ³	Open hole vol:		m ³			
	Time Swabbed/Flowed:	Daily:	hrs	Cum:	hrs	Total:		0 m ³			
Load Fluids	Reset <input type="checkbox"/> OIL	Used	m ³	Cum	0 m ³	Rec	m ³	Cum	0 m ³	To Rec	0 m ³
	Cums <input type="checkbox"/> WATER	Used	m ³	Cum	160 m ³	Rec	m ³	Cum	0 m ³	To Rec	160 m ³
	<input type="checkbox"/> OTHER	Used	m ³	Cum	0 m ³	Rec	m ³	Cum	0 m ³	To Rec	0 m ³
Hours	Service Rig Hours	Daily	hrs	Cumulative	83.50 hrs	DownTime:	hrs	Cumulative DownTime:	hrs		
	Personnel on Location	Rig:		Service:		Company:		Total Personnel:	0		
	Weather: Cloudy/Wind	Temp	°C	Lease:	Good			Roads:	Good		
Manager:				Programmed By:							



Tel1: (780) 841-8106

Page 1 of 1



Tel1: (780) 841-8106

Page 1 of 1

[illegible]

	Size (mm)	Type	Model	Depth
Bridge Plug	177.8	CANADIAN PLUG	10 K	1408
Cement Retainer				
Packer				
Invoice #	614-190209-1			
Reference Literature	COMPUTALOGS BONDLOG DATED: MARCH 24, 2002			

Remarks: HEAVY WAX IN CASING . SLOWED DOWN BRIDGE PLUG RUNNING TAG @ 810.0 mkB SLOWLY WENT THOUGH.

All interpretations are opinions based on inferences from electrical or other measurements and we cannot, and do not guarantee the accuracy or correctness of any interpretations, and we shall not, except in the case of gross or willful negligence on our part, be liable or responsible for any loss, costs, damages or expenses incurred or sustained by anyone resulting from any interpretation made by any of our officers, agents, or employees. These interpretations are also subject to our general terms and conditions as set out in our current price schedule.

Setting Tool Configuration

Shooting CCL

Serial #: SPECTRUM
 Length: 0.80 m Max Diameter: 79.38

Setting Tool

Serial #: BAKER # 20 TOOL
 Length: 2.20 m Max Diameter: 102.00 mm



0.00 m - CCL

Bridge Plug

Serial #: CANADIAN PLUG
 Length: 0.50 m Max Diameter: 177.80 mm

2.60 m Top of Bridge Plug

2.80 m Rubber

3.10 m Bottom of Bridge Plug

SETTING RECORD FOR BRIDGE PLUG

2016-01-25 11:55

CCL U4

0.0 100.0

Tension U4 (lbF)

0.00 3000.00

Pass No. 4

METERS

1:240

1340.6

1350

CCL U5

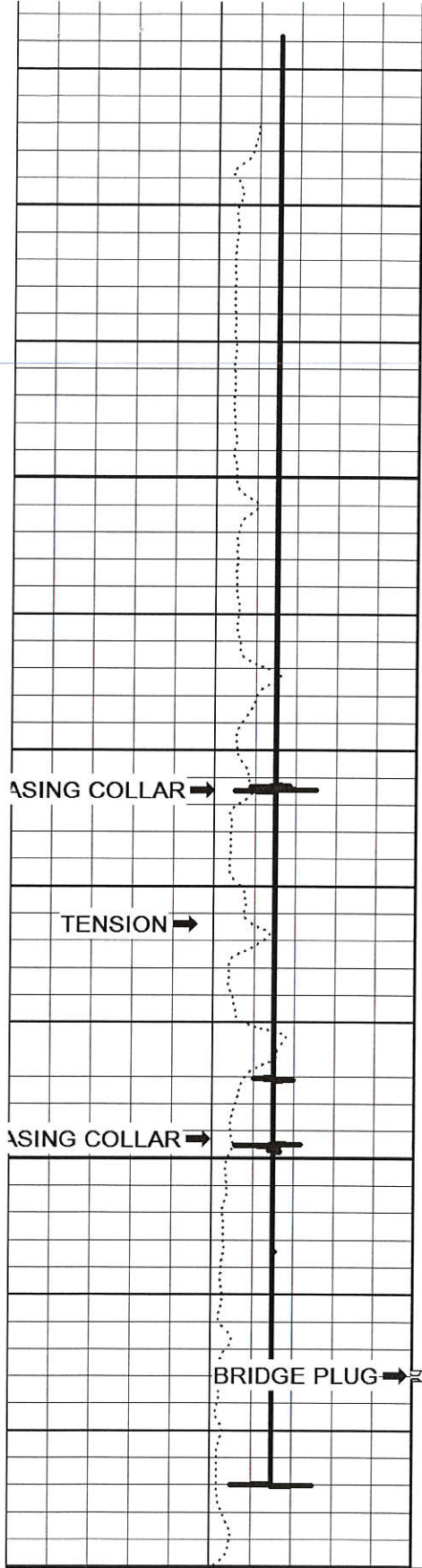
0.0 100.0

Tension U5 (lbF)

0.00 3000.00

File MERGE.pre

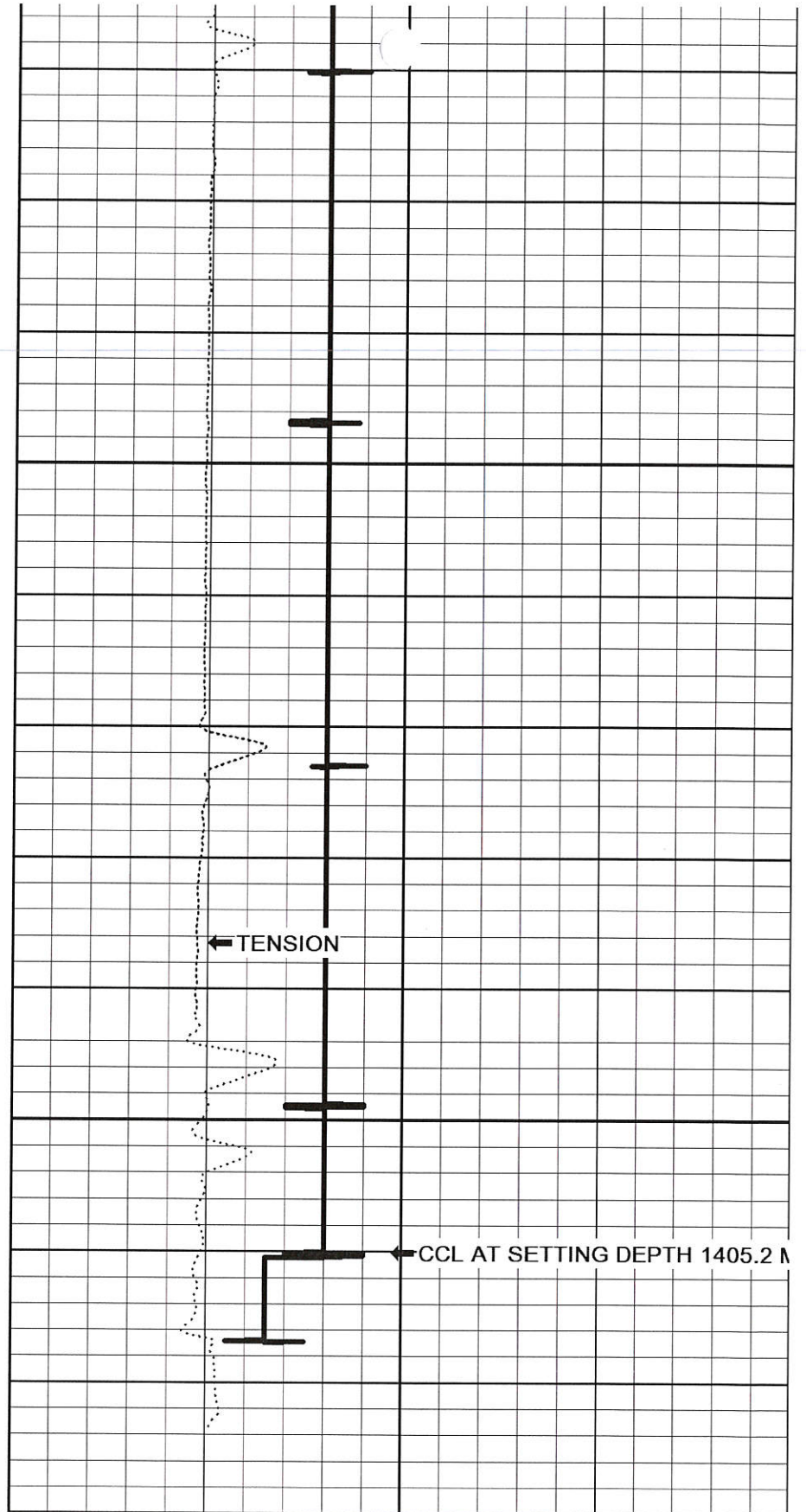
Rev. 2014.05.14



1375

1400

1415.1



2016-01-25 11:55

CCL U4

0.0 100.0

Tension U4 (lbF)

0.00 3000.00

Pass No. 4

METERS
1:240

CCL U5

0.0 100.0

Tension U5 (lbF)

0.00 3000.00

File MERGE.pre

Rev. 2014.05.14

Trace Summary

Name	Units	Track	Chart Left	Chart Right	Channel	Gain	Shift	Filter	Coeff	Depth Offset(m)	Time Sample
CCL_U4		1	0	100	3	68	65	LogReduction	2	0	
Tension_U4	lbF	1	0	3000		1	0	Butterworth	1.2	3	
CCL_U5		2	0	100	3	68	65	LogReduction	2	0	
Tension_U5	lbF	2	0	3000		1	0	Butterworth	1.2	3	



Company STRATEGIC OIL & GAS LTD.
Well STARTEGIC EL AL CAMERON C-74
Field CAMERON HILLS
Province N.W.T
LSD. **SEC.** **TWP.** **RGE.** **W.**



Tel2:
Tel1: (780) 841-8106

Remarks:

Total:	12
--------	----

Reservoir Fluids Summary	Reset <input type="checkbox"/> Gas:	Daily:	10 ³ m ³ /d	Cum:	1.716 10 ³ m ³	Tubing volume:		m ³				
	Cums <input type="checkbox"/> Oil or Condensate:	Daily:	m ³	Cum:	0 m ³	Csg. ann vol:		m ³				
	<input type="checkbox"/> Water:	Daily:	m ³	Cum:	0 m ³	Open hole vol:		m ³				
	Time Swabbed/Flowed:		Daily:	0.00 hrs	Cum:	hrs	Total:		0 m ³			
Load Fluids	Reset <input type="checkbox"/> OIL	Used	m ³	Cum	0 m ³	Rec	m ³	Cum	0 m ³	To Rec	0 m ³	
	Cums <input type="checkbox"/> WATER	Used	4.2 m ³	Cum	126.4 m ³	Rec	m ³	Cum	0 m ³	To Rec	126.4 m ³	
	<input type="checkbox"/> OTHER	Used	m ³	Cum	0 m ³	Rec	m ³	Cum	0 m ³	To Rec	0 m ³	
Hours	Service Rig Hours		Daily	12.00 hrs	Cumulative	61.00 hrs	DownTime:		hrs	Cumulative DownTime:		hrs
	Personnel on Location		Rig:	6	Service:	5	Company:		1	Total Personnel:		12
	Weather: Clear		Temp	-45 °C	Lease: Good				Roads: Good			
Manager:			Programmed By:									



Tel2:
Tel1: (780) 841-8106

Remarks:

Total:	12
--------	----

Reservoir Fluids Summary	Reset <input type="checkbox"/> Gas:	Daily:	10 ³ m ³ /d	Cum:	1.716 10 ³ m ³	Tubing volume:	m ³				
	Cums <input type="checkbox"/> Oil or Condensate:	Daily:	m ³	Cum:	0 m ³	Csg. ann vol:	m ³				
	<input type="checkbox"/> Water:	Daily:	m ³	Cum:	0 m ³	Open hole vol:	m ³				
	Time Swabbed/Flowed:	Daily:	0.00 hrs	Cum:	hrs	Total:	0 m ³				
Load Fluids	Reset <input type="checkbox"/> OIL	Used	m ³	Cum	0 m ³	Rec	m ³	Cum	0 m ³	To Rec	0 m ³
	Cums <input type="checkbox"/> WATER	Used	26 m ³	Cum	122.2 m ³	Rec	m ³	Cum	0 m ³	To Rec	122.2 m ³
	<input type="checkbox"/> OTHER	Used	m ³	Cum	0 m ³	Rec	m ³	Cum	0 m ³	To Rec	0 m ³
Hours	Service Rig Hours	Daily	12.00 hrs	Cumulative	49.00 hrs	DownTime:	hrs	Cumulative DownTime:	hrs		
	Personnel on Location	Rig:	8	Service:	5	Company:	1	Total Personnel:	14		
	Weather: Clear	Temp	-40 °C	Lease:	Good			Roads:	Good		
Manager:			Programmed By:								

Operator: Strategic Oil & Gas Ltd.

Reporting To: Ken Nikiforuk

Consultant: Shayne Stahl

Tel2:
Tel1: (780) 841-8106

UWI: 300C746010117150		WELL: Strategic et al Cameron C-74		DATE: 06-Feb-2019	
24 Hr Summary: Killed well, installed and tested BOPs, POOH, RIH with PBP, set at 1410 mK					
Formation: Sulphur Point		Surf Loc: C-74 60-10N 117-15W		Licence: 1939	
Objective: Abandon Sulphur Point Zone		Abandonment Type: Downhole		Day #: 3	
Operations at 6:00: POOH, RIH with test packer.		Serv Rig Start: 04-Feb-2019		Serv Rig End 10-Feb-2019	
Daily Cost: \$21,172		Previous Cumulative Cost: \$55,786		Cum Cost: \$76,958	
Ground: 774.60 m		KB To TH 3.80 m		Open Hole: mKB	
KB to Grd: 4.40 m		Tubing: 73 mm		Bot at: 1432 m	
TD (MD): 1,625.00 m		Casing: 177.8 mm		Set at: 1625 m	
PBSD: 1,607.80 m		Liner: mm		Top at: m	
BOP Drill: yes		BOP Press Test: yes		Function Test: yes	
SITP: 0 kPa		SICP: 282 kPa		SCV: kPa	
				H ₂ S %	

Remarks:

Run packer in the morning to test BP or look for leak.

Time From	Time To	Hours	Code	Comments
07:00	07:30	0.5	SAFE	Conducted crew safety and operations meeting. Swept lease for LEL's and H ₂ S. Function tested crown saver, air kills, blind rams, 73.0mm pipe rams and annular.
07:30	09:30	2	KILL	Bled off csg gas, pumped 24.0 m ³ fresh water down csg. Gas volume was TSTM. Pumped 6.0 m ³ down tbg.
09:30	11:30	2	BOPS	Removed wellhead and installed landing pup c/w safety valve. Picked up on tbg, installed 0.60m pup below tbg hanger. Tbg was in 5,000 daN tension, landed tbg hanger, tbg landed in 5,000 daN compression. Installed BOPs, tested ring gasket and 73.0mm pipe rams to 1.4 and 21.0 MPA for 10 mins each. Rigged up working floor.
11:30	14:30	3	TRPTBG	Unset anchor, removed tbg hanger. Rigged up tbg inspector. POOH with tbg as per program. Conducted blowout drill, 51 seconds to shut in. 136 - yellow, 7 - blue, 6 - green, 0 - red.
14:30	17:30	3	TRPTBG	Made up, tallied and RIH with 177.8mm hydraulic set PBP, setting tool, MCL and 147 - jts 73.0mm tbg. Located csg collars at 1386.40 & 1399.50 mKB. Negative 2.35m correction. Landed BP CE at 1410.0 mKB corrected depth.
17:30	20:00	2.5	PTST	Filled tbg with 4.20 m ³ fresh water, pressured up to 12.0 MPA and set PBP. Pulled 15,000 daN into BP to pack off elements. Pumped 26.0 m ³ water down csg, csg would not fill up.
				Secured well, drained pump and lines, SDFN.

Total: 13

Equipment on Location:

Reservoir Fluids Summary	Reset <input type="checkbox"/> Gas:	Daily: 10 ³ m ³ /d	Cum: 1.716 10 ³ m ³	Tubing volume: m ³		
	Cums <input type="checkbox"/> Oil or Condensate:	Daily: m ³	Cum: 0 m ³	Csg. ann vol: m ³		
	<input type="checkbox"/> Water:	Daily: m ³	Cum: 0 m ³	Open hole vol: m ³		
	Time Swabbed/Flowed:	Daily: 0.00 hrs	Cum: hrs	Total: 0 m ³		
Load Fluids	Reset <input type="checkbox"/> OIL	Used m ³	Cum 0 m ³	Rec m ³	Cum 0 m ³	To Rec 0 m ³
	Cums <input type="checkbox"/> WATER	Used 60.2 m ³	Cum 96.2 m ³	Rec m ³	Cum 0 m ³	To Rec 96.2 m ³
	<input type="checkbox"/> OTHER	Used m ³	Cum 0 m ³	Rec m ³	Cum 0 m ³	To Rec 0 m ³
Hours	Service Rig Hours	Daily 13.00 hrs	Cumulative 37.00 hrs	DownTime: hrs	Cumulative DownTime: hrs	
	Personnel on Location	Rig: 6	Service: 6	Company: 1	Total Personnel: 13	
	Weather: Clear	Temp -40 °C	Lease: Good	Roads: Good		
Manager:		Programmed By:				



114-172 Clearview Drive Red Deer County, AB T4E 0A1

Field Ticket
Contact
Phone

P93012

Chad Rookes

(780)512-5009

Customer Information

Company Name	Strategic Oil & Gas Ltd	Date	February 06, 2019
Surface Location	C74/60 10' N 117 15' W	AFE No.	
UWI	C74/60 10' N 117 15' W	Contract	
Rig Name & #	Global # 9	Co. Rep	Shayne Stahl
Area	Steen River	Code #	

Wellhead Tubing Inspection

Qty	Description	Unit Price	Total
149	Joints of 60.3mm, 6.99Kg, J55, EUE Tubing Inspected	\$ 15.00	\$ 2,235.00
400	Joints of 60.3mm, 6.99Kg, J55, EUE Tubing Inspected	\$ 1.50	\$ 600.00

Ultra Sonic Measurements		
Jt #	Wall Min	Wall Max
1	0.218	0.222
52	0.217	0.224
102	0.214	0.226

Head	60H15
Console	B0402
T-MGN	100H
R-WDS	280M

Sub Total	\$ 2,835.00
10% Discount	\$ -283.50
New Sub Total	\$ 2,551.50
GST	\$ 127.58
Total	\$ 2,679.08

0-15%	Yellow	136
16-30%	Blue	7
31-50%	Green	6
51+%	Red	0
Total		149

Order of Tubing Pulled	
146	73mm Eue J55 Tubing
1	Anchor
2	73mm Eue J55 Tubing
1	Pump Seating Nipple
1	3m Perforated Pup
1	73mm Eue J55 Tubing

Notes	Time Requested	10:00 AM	Inspection Start Time	12:05 PM
Pitting throughout most of the well but most of the tubing remained yellow band.				

Inspector Cyril Gorman

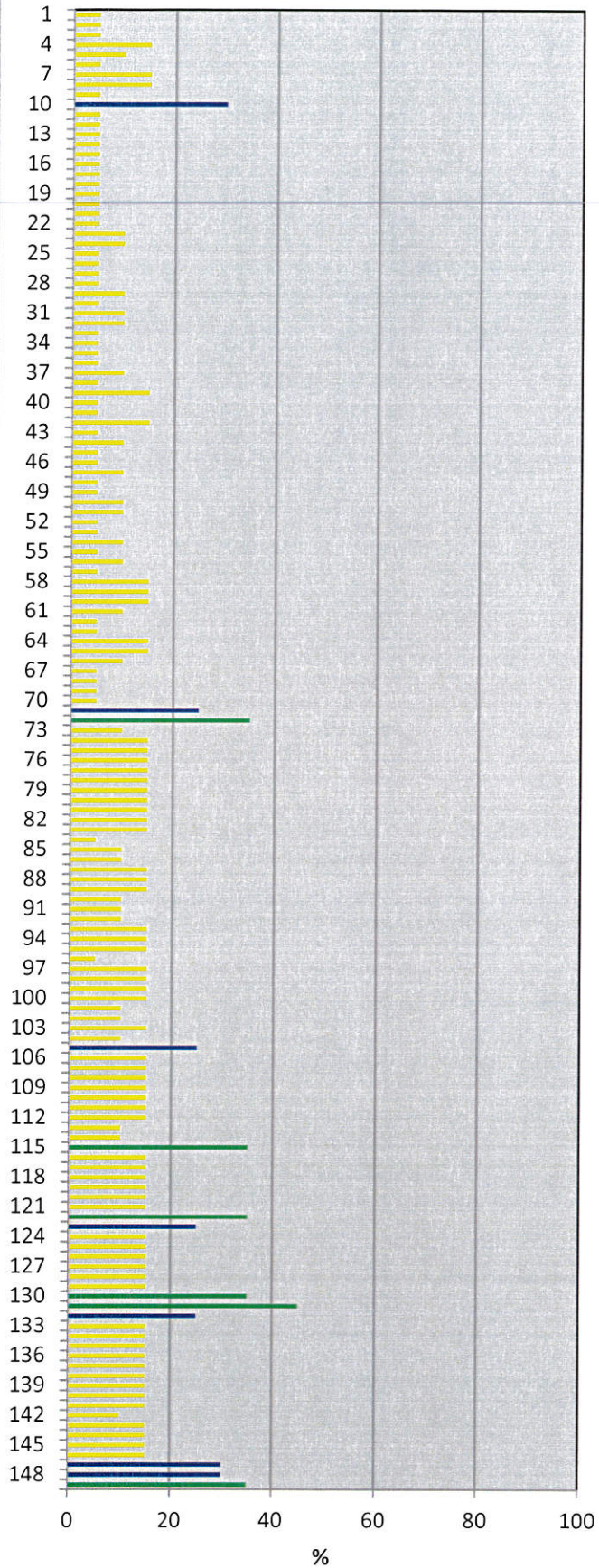
Customer _____

Jt#	Wall Loss	Pitting	Damage
1	5	5	
1	Ultrasonic Wall Min: 0.218 Max: 0.222		
2	5	5	
3	5	5	
4	5	15	Pitting
5	5	10	Pitting
6	5	5	
7	5	15	Pitting
8	5	15	Pitting
9	5	5	
10	10	30	Wall Loss & Pitting
11	5	5	
12	5	5	
13	5	5	
14	5	5	
15	5	5	
16	5	5	
17	5	5	
18	5	5	
19	5	5	
20	5	5	
21	5	5	
22	5	5	
23	5	10	Pitting
24	5	10	Pitting
25	5	5	
26	5	5	
27	5	5	
28	5	5	
29	5	10	Pitting
30	5	5	
31	5	10	Pitting
32	5	10	Pitting
33	5	5	
34	5	5	
35	5	5	
36	5	5	
37	5	10	Pitting
38	5	5	
39	5	15	Pitting
40	5	5	
41	5	5	
42	5	15	Pitting
43	5	5	
44	5	10	Pitting
45	5	5	
46	5	5	
47	5	10	Pitting
48	5	5	
49	5	5	
50	5	10	Pitting

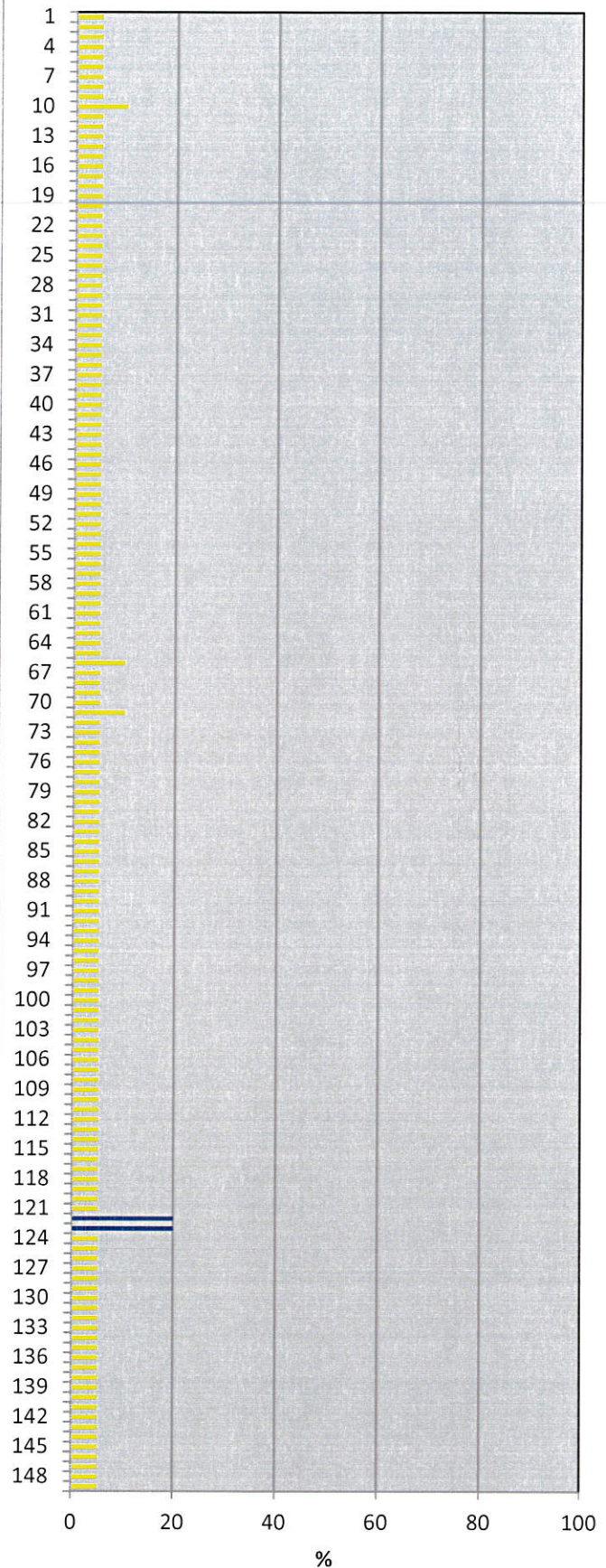
Jt#	Wall Loss	Pitting	Damage
51	5	10	Pitting
52	5	5	
52	Ultrasonic Wall Min: 0.217 Max: 0.224		
53	5	5	
54	5	10	Pitting
55	5	5	
56	5	10	Pitting
57	5	5	
58	5	15	Pitting
59	5	15	Pitting
60	5	15	Pitting
61	5	10	Pitting
62	5	5	
63	5	5	
64	5	15	Pitting
65	5	15	Pitting
66	10	10	Wall Loss & Pitting
67	5	5	
68	5	5	
69	5	5	
70	5	5	
71	10	25	Wall Loss & Pitting
72	5	35	Pitting
73	5	10	Pitting
74	5	15	Pitting
75	5	15	Pitting
76	5	15	Pitting
77	5	15	Pitting
78	5	15	Pitting
79	5	15	Pitting
80	5	15	Pitting
81	5	15	Pitting
82	5	15	Pitting
83	5	15	Pitting
84	5	5	
85	5	10	Pitting
86	5	10	Pitting
87	5	15	Pitting
88	5	15	Pitting
89	5	15	Pitting
90	5	10	Pitting
91	5	10	Pitting
92	5	10	Pitting
93	5	15	Pitting
94	5	15	Pitting
95	5	15	Pitting
96	5	5	
97	5	15	Pitting
98	5	15	Pitting
99	5	15	Pitting
100	5	15	Pitting

Jt#	Wall Loss	Pitting	Damage
101	5	10	Pitting
102	5	10	Pitting
102	Ultrasonic Wall Min: 0.214 Max: 0.226		
103	5	15	Pitting
104	5	10	Pitting
105	5	25	Pitting
106	5	15	Pitting
107	5	15	Pitting
108	5	15	Pitting
109	5	15	Pitting
110	5	15	Pitting
111	5	15	Pitting
112	5	15	Pitting
113	5	10	Pitting
114	5	10	Pitting
115	5	35	Pitting
116	5	15	Pitting
117	5	15	Pitting
118	5	15	Pitting
119	5	15	Pitting
120	5	15	Pitting
121	5	15	Pitting
122	20	35	Wall Loss & Pitting
123	20	25	Wall Loss & Pitting
124	5	15	Pitting
125	5	15	Pitting
126	5	15	Pitting
127	5	15	Pitting
128	5	15	Pitting
129	5	15	Pitting
130	5	35	Pitting
131	5	45	Pitting
132	5	25	Pitting
133	5	15	Pitting
134	5	15	Pitting
135	5	15	Pitting
136	5	15	Pitting
137	5	15	Pitting
138	5	15	Pitting
139	5	15	Pitting
140	5	15	Pitting
141	5	15	Pitting
142	5	10	Pitting
143	5	15	Pitting
144	5	15	Pitting
145	5	15	Pitting
146	5	15	Pitting
147	5	30	Pitting
148	5	30	Pitting
149	5	35	Pitting

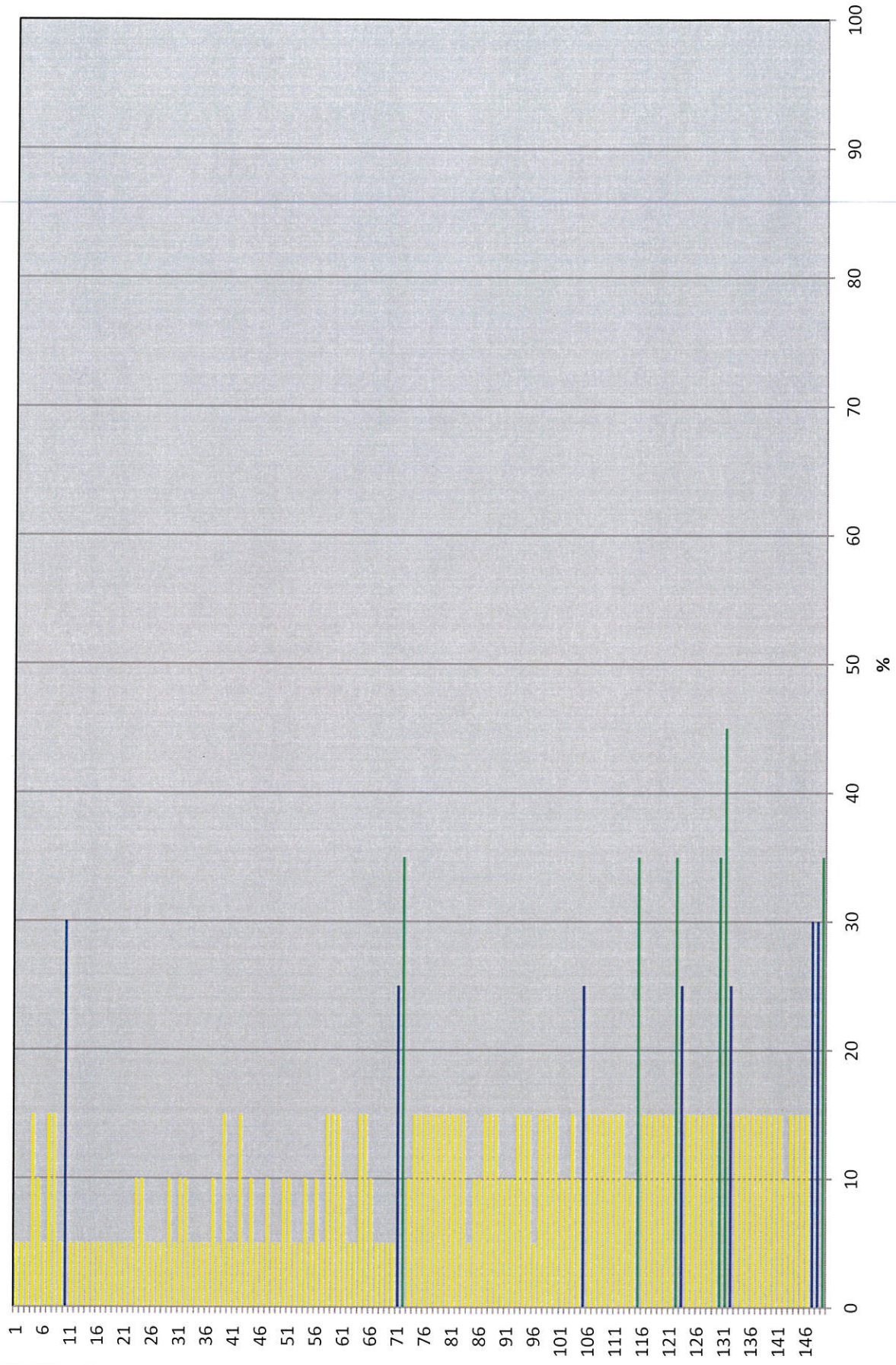
Pitting 1 to 149



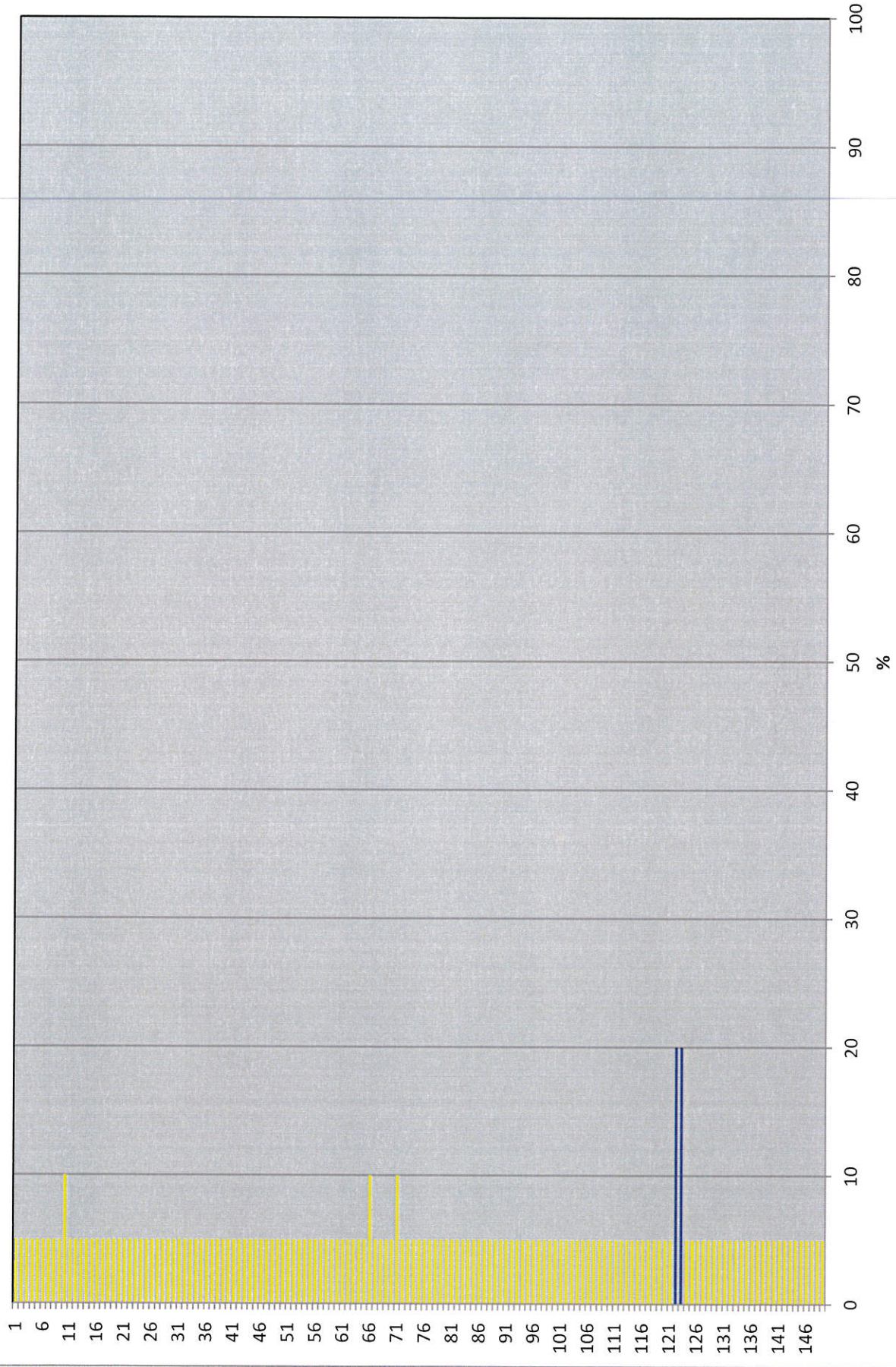
Wall Loss 1 to 149



Pitting 1 to 149



Wall Loss 1 to 149



Operator: Strategic Oil & Gas Ltd.

Reporting To: Ken Nikiforuk

Consultant: Shayne Stahl

 Tel2:
 Tel1: (780) 841-8106

UWI: 300C746010117150		WELL: Strategic et al Cameron C-74		DATE: 05-Feb-2019	
24 Hr Summary: Bled off gas heads, tested tbg to 5 MPA, laid down rods, killed csg, tbg start END: 11-Feb-2019					
Formation: Sulphur Point		Surf Loc: C-74 60-10N 117-15W		Licence: 1939	Day #: 2
Objective: Abandon Sulphur Point Zone		Abandonment Type: Downhole		Serv Rig Start: 04-Feb-2019	Serv Rig End: 10-Feb-2019
Operations at 6:00: Kill well, install BOPs				AFE #: 19ABCAM007	AFE Estimate: \$176,492.00
Daily Cost: \$18,018		Previous Cumulative Cost: \$37,768		Cum Cost: \$55,786	
Ground:	774.60 m	KB To TH	3.80 m	Open Hole:	mKB
KB to Grd:	4.40 m	Tubing:	73 mm	Bot at:	1432 m
TD (MD):	1,625.00 m	Casing:	177.8 mm	Set at:	1625 m
PBTD:	1,607.80 m	Liner:	mm	Top at:	m
BOP Drill: yes		BOP Press Test: yes		Function Test: yes	
SITP:	2179 kPa	SICP:	5257 kPa	SCV:	kPa H ₂ S %

Remarks:

Time From	Time To	Hours	Code	Comments
07:00	07:30	0.5	SAFE	Conducted crew safety and operations meeting. Swept lease for LEL's and H ₂ S. Function tested crown saver and air kills.
07:30	10:00	2.5	KILL	Warmed up pump lines. Bled off tbg gas head, filled tbg with 2.0 m ³ fresh water, tested to 5.0 MPA. Unseated BHP and pumped 4.0 m ³ down tbg.
10:00	14:00	4	TRPROD	Function tested rod BOPs. Seated BHP, stripped off stuffing box, stripped on rod BOPs. POOH with rods and BHP as per program. OROGO inspection, replaced 1 BOP fire hose.
14:00	15:30	1.5	BOPS	Conducted accumulator check, function tested blind rams, 73.0mm pipe rams and annular. Stump tested blind rams, 73.0mm pipe rams, line pipe and 2 safety valves to 1.4 and 14.0 MPA for 10 mins each, tested annular to 1.4 and 7.0 MPA for 10 mins each. Bled off csg gas while testing BOPs. Total gas flared 1.716 E ³ M ³ over 1 hour. No flow rate due pressure decline.
15:30	17:00	1.5	KILL	Pumped 24.0 m ³ fresh water down csg. Csg on vacuum. Tbg was at 2200 kpa, bled down tbg, pumped 6.0 m ³ down tbg. Csg started blowing.
17:00	19:00	2	WLHD	Shut in well, need more water. Worked lag screws until easily operational. Cleaned up wellhead studs for fast removal. Studs and lags were rusted. Secured well, drained pump and lines, SDFN.

Total: 12

Equipment on Location:

Reservoir Fluids Summary	Reset <input type="checkbox"/> Gas:	Daily: 1.716 10 ³ m ³ /d	Cum: 1.716 10 ³ m ³	Tubing volume:	m ³
	Cums <input type="checkbox"/> Oil or Condensate:	Daily: m ³	Cum: 0 m ³	Csg. ann vol:	m ³
	<input type="checkbox"/> Water:	Daily: m ³	Cum: 0 m ³	Open hole vol:	m ³
	Time Swabbed/Flowed:	Daily: 0.00 hrs	Cum: hrs	Total:	0 m ³
Load Fluids	Reset <input type="checkbox"/> OIL	Used m ³	Cum 0 m ³	Rec m ³	Cum 0 m ³ To Rec 0 m ³
	Cums <input type="checkbox"/> WATER	Used 36 m ³	Cum 36 m ³	Rec m ³	Cum 0 m ³ To Rec 36 m ³
	<input type="checkbox"/> OTHER	Used m ³	Cum 0 m ³	Rec m ³	Cum 0 m ³ To Rec 0 m ³
Hours	Service Rig Hours	Daily 12.00 hrs	Cumulative 24.00 hrs	DownTime:	hrs Cumulative DownTime: hrs
	Personnel on Location	Rig: 6	Service: 4	Company: 1	Total Personnel: 11
	Weather: Clear	Temp -39 °C	Lease: Good	Roads: Good	
Manager:		Programmed By:			

