

**Strategic Oil & Gas Ltd.**  
**Final Well Operations Report**  
**Strategic et al Cameron 2M-73**  
**Well ID – 2026**  
**302/M73601011715/0**

- Jan 31, 2019 :** MIRU Global #9. Performed SCVF test for 15 minutes. No bubbles. Bled off gas head ( 0.032 e3m3 in 30 minutes ). Rods appear to be parted. Pump 18.0 m3 fresh water down casing
- Feb 1, 2019 :** Pulled 52 – 22.2 mm rods. Parted at first 19.1 mm rod. RIH with overshot. Latched onto fish and unseated BHP. Pumped 12.0 m3 fresh water heated to 85 deg C down tubing. Pulled and laid down rods.
- Feb 2, 2019 :** Installed and pressure tested BOP's. Unset anchor. Pull and lay down tubing. Inspect on the way out of the hole ( yellow – 60, blue – 16, green – 24 and red – 57 ). RIH with 139.7 mm 10K permanent bridge plug. Ran 40 joints and SDFN.
- Feb 3, 2019 :** Continue running in the hole with BP and land at 1475.0 mKB. Filled tubing with 4.3 m3 fresh water and pressured up to 12000 kPa to set bridge plug. Pumped 6.2 m3 fresh water down casing. Let wellbore settle for 30 minutes. Pressure test bridge plug to 7000 kPa for 10 minutes. Solid test. Mixed 0.5 m3 of 1900 kg/m3 cement. Circulated down tubing followed by 4.2 m3 fresh water. Pulled up five joints and reverse circulated 17.0 m3 inhibited fresh water ( 0.5 CRX132 ). No cement in returns. Cement top at 1434.7 mKB. Pulled and laid down tubing.
- Feb 4, 2019 :** Topped up casing with 1. m3 50/50 inhibited methanol water. Remove BOP's, install wellhead and rig out.

*Ken Ntily*  
*Mar 11, 2019*

## WELL TERMINATION RECORD

**INSTRUCTIONS:**

1. Complete both pages.
2. Send one electronic copy of this form and supporting technical documentation by email to [orogo@gov.nt.ca](mailto:orogo@gov.nt.ca).
3. Send two signed hard copies of this form and supporting technical documentation by courier to:  
 Chief Conservation Officer  
 Office of the Regulator of Oil and Gas Operations  
 4th floor Northwest Tower  
 5201 50th Avenue  
 Yellowknife NT X1A 3S9

**WELL INFORMATION**

Well Name	Strategic et al Cameron 2M-73	Operator	Strategic Oil & Gas Ltd.
Well Type	Development Well (if Other, specify _____)	Contractor	Global Well Servicing Rig 9
Well Identifier	2026	Current Well Status	Suspended

**RELATED LICENCES AND AUTHORIZATIONS**

Operating Licence No.	NWT-OL-2014-007	Operations Authorization	OA - 1237-001
PRA Licence No.	Production Licence 004	Approval to Alter Condition of Well	ACW - 2018-007

**LOCATION INFORMATION**

**Coordinates**      Datum: NAD27 (if Other, please specify \_\_\_\_\_)

Surface	Lat 60 ° 2 ' 52 "	Long 117 ° 29 ' 31 "
Bottom Hole	Lat 60 ° 2 ' 52 "	Long 117 ° 29 ' 50 "

Region: Dehcho    Unit M    Section 73    Grid 60-10 117-15

**ACTIVITY INFORMATION**

Target Formation(s)	Sulphur Point	Field/Pool(s)	/
Elevation KB/RT	776.1 m	Ground Level / Seafloor	771.8 m
Spud/Re-entry Date	Jan 31, 2019 days	Total Depth	1522.0 m KB
Rig Release Date	Feb 4, 2019	Total Vertical Depth	1448.8 m KB

**CASING AND CEMENTING PROGRAM**

O.D. (mm)	Weight (kg/m)	Grade	Setting Depth (m KB)	Cementing (m³)
219.1	35.72	J-55	428.0	33.1 tonnes
139.7	23.07	J-55	1522.0	33.0 tonnes



**PLUGGING PROGRAM**

Type of Plug	Interval (m KB)	Felt	Setting Depth (m KB)	Cementing (m <sup>3</sup> )
Bridge	1434.7-1475.0	No	1475.0	0.5
Select	-	Select		
Select	-	Select		
Select	-	Select		


**PERFORATION**

Interval (m KB)	Comments
1485.0-1498.0	Sulphur Point - abandoned zone
-	
-	
-	

**OTHER**

Lost Circulation/Overpressure Zones	
Equipment Left on Site (Describe)	Oil well production equipment
Provision for Re-entry (Describe and attach sketch)	
Other Downhole Completion/Suspension	
Additional Comments	

***"I certify that the information provided on this form is true and correct"***

Name	Ken Nikiforuk	Phone	(403) 767-2944 Ext
Title	Completions Manager	E-Mail	knikiforuk@sogoil.com
Operator	Strategic Oil & Gas Ltd		
Signature	 Responsible Officer of Company	Date	March 11, 2019

**OROGO use only**

Unique Well Identifier

 30 /        -        -        /         
 (eg. 300 / A01 60-00 120-00 / 0)

## Final Installation Report

Company	STRATEGIC	Reference	TICKET #CS0031169
Prepared for	SHAYNE STAHL	Client #	(780)841-8106
Sales Rep	WRP DAVE BORLE	Vendor #	
Service Center	HIGH LEVEL	Drawn by	MATT FISCHER
		Date	03/02/2019
		Page	1

ITEM	DESCRIPTION	I.D.	O.D.	Length (m)	Depth (m)
A.	SULPHUR POINT CASING PERFORATIONS				
B.	SULPHUR POINT CASING PERFORATIONS				
C.	TRYTON 139.7mm 69MPa PERMANENT SET HYDR-MECHANICAL BRIDGE PLUG. CENTER ELEMENT @ 1475.0mKB				
D.	40.27m OF 1901KGM3 CLASS "G" OIL WELL CEMENT.				

## NOTES

RAN IN HOLE WITH HYDRAULIC SET MECHANICAL PACK-OFF 69MPa BRIDGE PLUG. RAN 153 X 73.0mm J-55 TUBING JOINTS LOCATED CASING COLLARS @ 1450.7mKB & 1464.2mKB. HAD NEGATIVE -3.20m TUBING TO WIRELINE CORRECTION. LANDED PERMNET BRIDGE PLUG @ 1475.0mKB CENTER OF ELEMENT. CORRECTED DEPTH. FILLED TUBING WITH 4.20M3 FRESH WATER. PRESSURED UP TO 12MPa AND SET BRIDGE PLUG. PULLED 14,000daN TENSION INTO BRIDGE PLUG TO PACK-OFF ELEMENT SYSTEM. FILLED CASING WITH 6.20M3. OPENED CASING TO RIG TANK TO ALLOW AIR TO MIGRATE OUT OF CASING. TOPPED UP CASING WITH 0.20M3 OF FRESH WATER. LET SETTLE FOR 30 MIN. PRESSURED UP CASING TO 7MPa. BUMPED PRESSURE TO 7MPa. HELD 10 MIN. SOLID TEST. ROTATED OFF BRIDGE PLUG. MIXED AND DUMPED 0.50M3 OF 1901KG/M3 SLURRY DOWN TUBING. DISPLACED WITH 4.0M3 OF FRESH INHIBITED WATER. PULLED 5 X 73.0MM TUBING JOINTS TO BALANCE. PULLED 5 X 73.0MM TUBING JOINTS. BACKWASHED 17 M3 INHIBITED WATER. NO CEMENT RETURNS. CALCULATED CEMENT TOP @ 1434.73mKB BASED ON 0.012416 M3/M IN 139.7MM 23.07KG/M CASING

This document is confidential correspondence between our company and its customer. It may not be reproduced in any form, in whole or in part, by any means including any electronic format, nor its contents disclosed to anyone but our employees and employees of our customer.

powerDRAW.net

429.00 m

1434.73 m

1475.00 m

1485.00 m

1492.00 m

1494.00 m

1498.00 m

1522.00 m

D

C

B

A





Tel2:  
Tel1: (780) 841-8106

Remarks:

Total:	3.5
--------	-----

Page 1 of 1

Operator: Strategic Oil &amp; Gas Ltd.

Reporting To: Ken Nikiforuk

Consultant: Shayne Stahl

Tel2:

Tel1: (780) 841-8106

UWI: 302M736010117152		WELL: Strategic et al Cameron 2M-73		DATE: 03-Feb-2019	
24 Hr Summary: RIH and set PBP at 1475 mKB, tested to 7 MPA, circ cement on BP, circ to in END: 05-Feb-2019					
Formation: Sulphur Point		Surf Loc: M73 60-10N 117-15W		Licence: 2026	
Objective: Abandon Sulphur Point Zone		Abandonment Type: Downhole		Serv Rig Start: 31-Jan-2019	
Operations at 6:00: Complete rig out, move to C-74		AFE #: 19ABCAM006		AFE Estimate: \$165,364.00	
Daily Cost: \$37,225		Previous Cumulative Cost: \$71,994		Cum Cost: \$109,219	
Ground:	776.10 m	KB To TH	0.00 m	Open Hole:	mKB
KB to Grd:	5.10 m	Tubing:	73 mm	Bot at:	m
TD (MD):	1,522.00 m	Casing:	139.7 mm	Set at:	1522 m
PBTD:	1,507.00 m	Liner:	mm	Top at:	m
BOP Drill:		BOP Press Test:		Function Test: yes	
SITP:	0 kPa	SICP:	0 kPa	SCV:	kPa
				H <sub>2</sub> S	%

Remarks:

Time From	Time To	Hours	Code	Comments
07:00	07:30	0.5	SAFE	Conducted crew safety and operations meeting. Swept lease for LEL's and H <sub>2</sub> S. Function tested air kills, crown saver, 73.0mm pipe rams and annular.
07:30	11:30	4	TRPTBG	Warmed up hydraulics. Tallied and RIH with 115 - jts 73.0mm tbq, located csg collars at 1450.70 & 1464.20 mKB. Tally correction was a negative 3.20m. Landed PBP CE at 1475.0 mKB corrected depth. Filled tbq with 4.30 m <sup>3</sup> fresh water, pressured up to 12.0 MPA and set BP, pulled 14,000 daN over string weight to pack off elements.
11:30	13:00	1.5	PTST	Filled csg with 6.20 m <sup>3</sup> fresh water, opened csg to rig tank for 30 mins to let air out. Pressured up to 7.0 MPA, bled down 570 kpa in 10 mins, bumped to 7.0 MPA, bled down 280 kpa in 10 mins, bumped up to 7.0 MPA, bled down 60 kpa in 10 mins, bumped up to 7.0 MPA, 10 min test.
13:00	15:00	2	CIRC	Mixed up 0.50 m <sup>3</sup> 1900 kg/m <sup>3</sup> cement and poured down tbq. Displaced cement with 4.20 m <sup>3</sup> fresh water. Pulled 5 - jts 73.0mm tbq. Reverse circulated well to 0.50% CRW-132 inhibited fresh water with 17.0 m <sup>3</sup> . No cement in returns. Calculated cement top at 1434.73 mKB based on 0.012416 m <sup>3</sup> /m volume of 139.7mm 23.07 kg/m csg.
15:00	18:00	3	TRPTBG	POOH and laid down 73.0mm tbq.
18:00	19:00	1	RIG	Rigged out p-tank, pump and tank. Rigged out pipe wracks. Secured well, SDFN.

Total: 12

Equipment on Location:

Reservoir Fluids Summary	Reset <input type="checkbox"/> Gas:	Daily:	10 <sup>3</sup> m <sup>3</sup> /d	Cum:	0 10 <sup>3</sup> m <sup>3</sup>	Tubing volume:	m <sup>3</sup>
	Cums <input type="checkbox"/> Oil or Condensate:	Daily:	m <sup>3</sup>	Cum:	0 m <sup>3</sup>	Csg. ann vol:	m <sup>3</sup>
	<input type="checkbox"/> Water:	Daily:	m <sup>3</sup>	Cum:	0 m <sup>3</sup>	Open hole vol:	m <sup>3</sup>
	Time Swabbed/Flowed:	Daily:	0.00 hrs	Cum:	hrs	Total:	0 m <sup>3</sup>
Load Fluids	Reset <input type="checkbox"/> OIL	Used	m <sup>3</sup>	Cum	0 m <sup>3</sup>	Rec	m <sup>3</sup>
	Cums <input type="checkbox"/> WATER	Used	10.5 m <sup>3</sup>	Cum	40.5 m <sup>3</sup>	Rec	m <sup>3</sup>
	<input type="checkbox"/> OTHER	Used	m <sup>3</sup>	Cum	0 m <sup>3</sup>	Rec	m <sup>3</sup>
Hours	Service Rig Hours	Daily	12.00 hrs	Cumulative	48.00 hrs	DownTime:	hrs
	Personnel on Location	Rig:	6	Service:	5	Company:	1
	Weather: Clear	Temp	-41 °C	Lease:	Good	Roads:	Good
Manager:		Programmed By:					



Operator: Strategic Oil &amp; Gas Ltd.

Reporting To: Ken Nikiforuk

Consultant: Shayne Stahl

Tel2:  
Tel1: (780) 841-8106

UWI: 302M736010117152		WELL: Strategic et al Cameron 2M-73		DATE: 02-Feb-2019		
24 Hr Summary: Removed wellhead and installed BOPs, POOH with tbg, ran 40 jts and PBP. END: 05-Feb-2019						
Formation: Sulphur Point		Surf Loc: M73 60-10N 117-15W		Licence: 2026 Day #: 3		
Objective: Abandon Sulphur Point Zone		Abandonment Type: Downhole		Serv Rig Start: 31-Jan-2019 Serv Rig End		
Operations at 6:00 : RIH and set PBP at 1475 mKB.		AFE #: 19ABCAM006		AFE Estimate: \$165,364.00		
Daily Cost: \$20,959		Previous Cumulative Cost: \$51,035		Cum Cost: \$71,994		
Ground:	776.10 m	KB To TH	0.00 m	Open Hole:	mKB	
KB to Grd:	5.10 m	Tubing:	73 mm	Bot at:	m	
TD (MD):	1,522.00 m	Casing:	139.7 mm	Set at:	1522 m	
PBTD:	1,507.00 m	Liner:	mm	Top at:	m	
BOP Drill: yes		BOP Press Test: yes		Function Test: yes		
SITP:	0 kPa	SICP:	0 kPa	SCV:	kPa H <sub>2</sub> S %	
Remarks:						
Time From	Time To	Hours	Code	Comments		
07:00	07:30	0.5	SAFE	Conducted crew safety and operations meeting. Swept lease for LEL's and H <sub>2</sub> S. Function tested crown saver and air kills.		
07:30	10:30	3	BOPS	Conducted accumulator check, function tested blind rams, 73.0mm pipe rams and annular. Stump tested blind rams, 73.0mm pipe rams and 2 safety valves to 1.4 and 21.0 MPA for 10 mins each. Tested annular to 1.4 and 7.0 MPA for 10 mins each. Removed wellhead and installed landing pup c/w safety valve. Bolts had to be sniped off.		
10:30	15:00	4.5	BOPS	Latched on to tbg, pulled in to tbg hanger, worked up to 34,000 daN, swung blocks, hammered on tbg spool, could not get tbg hanger to pop free. Poured coke on top of hanger, pulled 34,000 daN. Let sit for 1 hour. Worked blocks, pounded on tbg spool, hanger came free. Tbg was in 5,500 daN tension. Picked up on tbg and installed 0.60m pup below tbg hanger, landed tbg hanger, 6,000 daN compression. Installed BOPs, tested ring gasket and 73.0mm pipe rams to 1.4 and 21.0 MPA for 10 mins each. Rigged up working floor and hung tarps.		
15:00	18:00	3	TRPTBG	Unset anchor and removed tbg hanger, rigged up tbg inspector. POOH and inspected tbg as per program. Conducted blowout drill, 42 seconds for shut in. 60 - yellow, 16 - blue, 24 - green, 57 - red.		
18:00	19:30	1.5	TRPROD	Made up Tryton 139.7mm hydraulic set PBP, setting tool, MCL. Tallied and RIH with BP and 40 - jts 73.0mm tbg. Secured well, drained pump and lines, SDFN.		
Total:		12.5				
Equipment on Location:						
Reservoir Fluids Summary	<input type="checkbox"/> Gas:	Daily:	10 <sup>3</sup> m <sup>3</sup> /d	Cum:	0 10 <sup>3</sup> m <sup>3</sup>	
	<input type="checkbox"/> Oil or Condensate:	Daily:	m <sup>3</sup>	Cum:	0 m <sup>3</sup>	
	<input type="checkbox"/> Water:	Daily:	m <sup>3</sup>	Cum:	0 m <sup>3</sup>	
	Time Swabbed/Flowed:	Daily:	0.00 hrs	Cum:	hrs	
Tubing volume:		m <sup>3</sup>				
Csg. ann vol:		m <sup>3</sup>				
Open hole vol:		m <sup>3</sup>				
Total:		0 m <sup>3</sup>				
Load Fluids	<input type="checkbox"/> OIL	Used	m <sup>3</sup>	Cum	0 m <sup>3</sup>	
	<input type="checkbox"/> WATER	Used	m <sup>3</sup>	Cum	30 m <sup>3</sup>	
	<input type="checkbox"/> OTHER	Used	m <sup>3</sup>	Cum	0 m <sup>3</sup>	
	Rec	m <sup>3</sup>	Cum	0 m <sup>3</sup>	To Rec	0 m <sup>3</sup>
Rec		m <sup>3</sup>	Cum	0 m <sup>3</sup>	To Rec	30 m <sup>3</sup>
Rec		m <sup>3</sup>	Cum	0 m <sup>3</sup>	To Rec	0 m <sup>3</sup>
Hours	Service Rig Hours	Daily	12.50 hrs	Cumulative	36.00 hrs	
	Personnel on Location	Rig:	6	Service:	5	
	Weather: Clear	Temp	-34 °C	Lease:	Good	
DownTime:		hrs		Cumulative DownTime:		
Company:		1		Total Personnel:		
Roads:		Good				
Manager:		Programmed By:				



114-172 Clearview Drive Red Deer County, AB T4E 0A1

Field Ticket  
Contact  
Phone

P93010

Chad Rookes

(780)512-5009

Customer Information

Company Name	Strategic Oil & Gas Ltd	Date	February 02, 2019
Surface Location	Para Et al Cameron 2M-73	AFE No.	
UWI	302M 73/010117150	Contract	
Rig Name & #	Global # 9	Co. Rep	Shayne Stahl
Area	Steen River	Code #	

Wellhead Tubing Inspection

Qty	Description	Unit Price	Total
157	Joints of 73.0mm, 9.67Kg, J55, EUE Tubing Inspected	\$ 15.00	\$ 2,355.00
400	Kms From Base & Return	\$ 1.50	\$ 600.00

Ultra Sonic Measurements		
Jt #	Wall Min	Wall Max
1	0.202	0.222
56	0.202	0.218
101	0.200	0.218

Head	60H15
Console	B0402
T-MGN	100H
R-WDS	280M

Sub Total	\$ 2,955.00
10% Discount	\$ -295.50
New Sub Total	\$ 2,659.50
GST	\$ 132.98
Total	\$ 2,792.48

0-15%	Yellow	60
16-30%	Blue	16
31-50%	Green	24
51+%	Red	57
Total		157

Order of Tubing Pulled	
1	73mm Eue J55 Tubing
3	73mm Eue J55 pups 7.34m
152	73mm Eue J55 Tubing
1	Anchor
3	73mm Eue J55 Tubing
1	Pump seating Nipple
1	73mm Eue J55 Tubing
1	Wire Guide

Notes	Time Requested	10:30 AM	Inspection Start Time	3:25 PM
Pitting in the tubing from start ro finish. No yellow band joints after joint 90. From Joint 1 to 36 were all yellow band.				

Inspector Cyril Gorman

Customer \_\_\_\_\_



Jt#	Wall Loss	Pitting	Damage
1	5	5	
1	Ultrasonic Wall Min: 0.202 Max: 0.222		
2	5	5	
3	10	10	Wall Loss & Pitting
4	5	15	Pitting
5	5	5	
6	5	5	
7	5	5	
8	5	15	Pitting
9	5	5	
10	5	5	
11	5	15	Pitting
12	5	15	Pitting
13	5	15	Pitting
14	5	15	Pitting
15	5	15	Pitting
16	5	15	Pitting
17	5	15	Pitting
18	5	15	Pitting
19	5	15	Pitting
20	5	15	Pitting
21	5	15	Pitting
22	5	5	
23	5	15	Pitting
24	5	15	Pitting
25	5	15	Pitting
26	5	15	Pitting
27	5	15	Pitting
28	5	15	Pitting
29	5	15	Pitting
30	5	15	Pitting
31	5	15	Pitting
32	5	15	Pitting
33	5	15	Pitting
34	5	15	Pitting
35	5	10	Pitting
36	5	15	Pitting
37	10	25	Wall Loss & Pitting
38	5	15	Pitting
39	5	15	Pitting
40	5	15	Pitting
41	5	15	Pitting
42	5	15	Pitting
43	5	15	Pitting
44	5	15	Pitting
45	5	35	Pitting
46	10	35	Wall Loss & Pitting
47	5	35	Pitting
48	5	15	Pitting
49	5	35	Pitting
50	5	30	Pitting

Jt#	Wall Loss	Pitting	Damage
51	5	50	Pitting
52	5	15	Pitting
53	5	15	Pitting
54	5	15	Pitting
55	5	15	Pitting
56	5	15	Pitting
56	Ultrasonic Wall Min: 0.202 Max: 0.218		
57	5	15	Pitting
58	5	15	Pitting
59	5	35	Pitting
60	5	15	Pitting
61	5	35	Pitting
62	5	35	Pitting
63	5	15	Pitting
64	10	60	Wall Loss & Pitting
65	5	15	Pitting
66	5	25	Pitting
67	5	25	Pitting
68	5	35	Pitting
69	5	30	Pitting
70	5	30	Pitting
71	5	15	Pitting
72	5	15	Pitting
73	5	15	Pitting
74	5	15	Pitting
75	5	50	Pitting
76	5	30	Pitting
77	5	30	Pitting
78	5	30	Pitting
79	5	15	Pitting
80	5	30	Pitting
81	5	30	Pitting
82	5	30	Pitting
83	20	35	Wall Loss & Pitting
84	5	30	Pitting
85	5	20	Pitting
86	10	75	Wall Loss & Pitting
87	5	30	Pitting
88	5	55	Pitting
89	5	25	Pitting
90	5	15	Pitting
91	25	85	Wall Loss & Pitting
92	10	45	Wall Loss & Pitting
93	30	90	Wall Loss & Pitting
94	20	35	Wall Loss & Pitting
95	5	50	Pitting
96	5	40	Pitting
97	30	85	Wall Loss & Pitting
98	5	40	Pitting
99	5	55	Pitting
100	5	40	Pitting

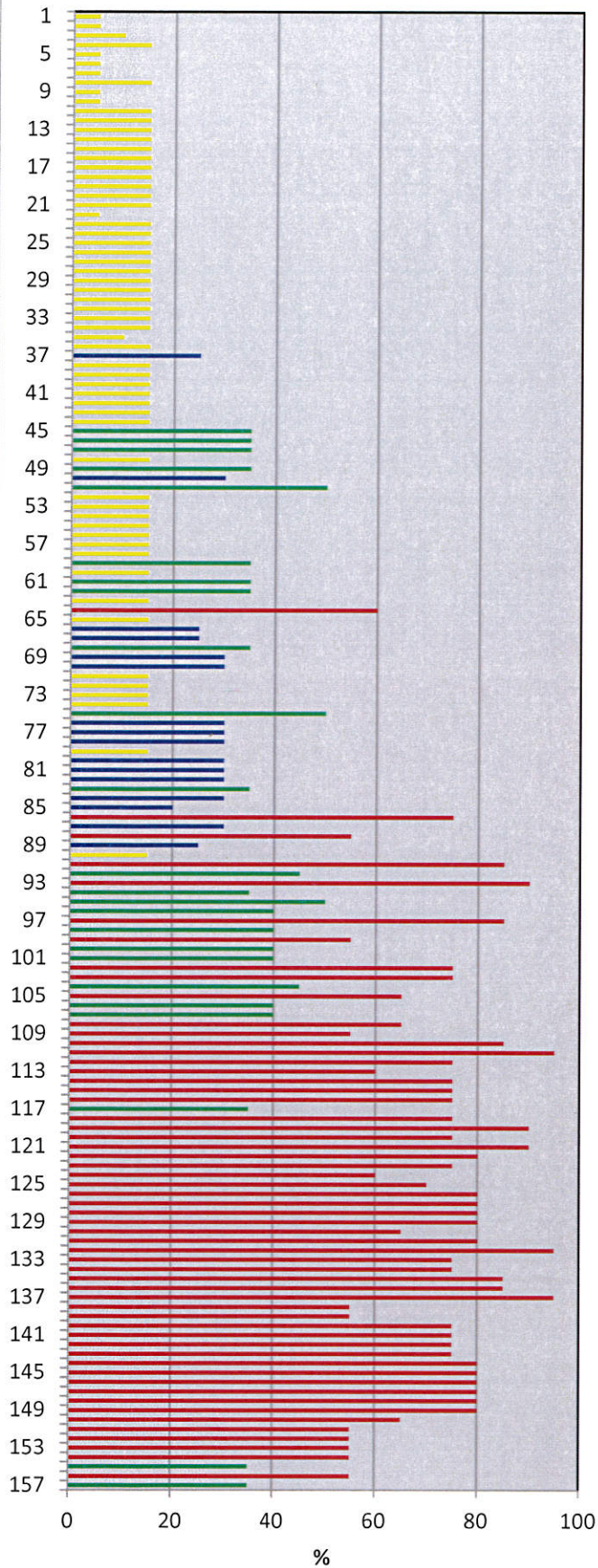


Jt#	Wall Loss	Pitting	Damage
101	5	40	Pitting
101	Ultrasonic Wall Min: 0.200 Max: 0.218		
102	5	75	Pitting
103	5	75	Pitting
104	20	45	Wall Loss & Pitting
105	20	65	Wall Loss & Pitting
106	5	40	Pitting
107	5	40	Pitting
108	20	65	Wall Loss & Pitting
109	5	55	Pitting
110	5	85	Pitting
111	25	95	Wall Loss & Pitting
112	5	75	Pitting
113	5	60	Pitting
114	35	75	Wall Loss & Pitting
115	25	75	Wall Loss & Pitting
116	25	75	Wall Loss & Pitting
117	5	35	Pitting
118	10	75	Wall Loss & Pitting
119	10	90	Wall Loss & Pitting
120	10	75	Wall Loss & Pitting
121	20	90	Wall Loss & Pitting
122	20	80	Wall Loss & Pitting
123	5	75	Pitting
124	5	60	Pitting
125	5	70	Pitting
126	5	80	Pitting
127	5	80	Pitting
128	5	80	Pitting
129	5	80	Pitting
130	5	65	Pitting
131	5	80	Pitting
132	5	95	Pitting
133	5	75	Pitting
134	5	75	Pitting
135	5	85	Pitting
136	5	85	Pitting
137	35	95	Wall Loss & Pitting
138	20	55	Wall Loss & Pitting
139	20	55	Wall Loss & Pitting
140	20	75	Wall Loss & Pitting
141	20	75	Wall Loss & Pitting
142	20	75	Wall Loss & Pitting
143	20	75	Wall Loss & Pitting
144	5	80	Pitting
145	15	80	Wall Loss & Pitting
146	15	80	Wall Loss & Pitting
147	20	80	Wall Loss & Pitting
148	20	80	Wall Loss & Pitting
149	5	80	Pitting
150	5	65	Pitting

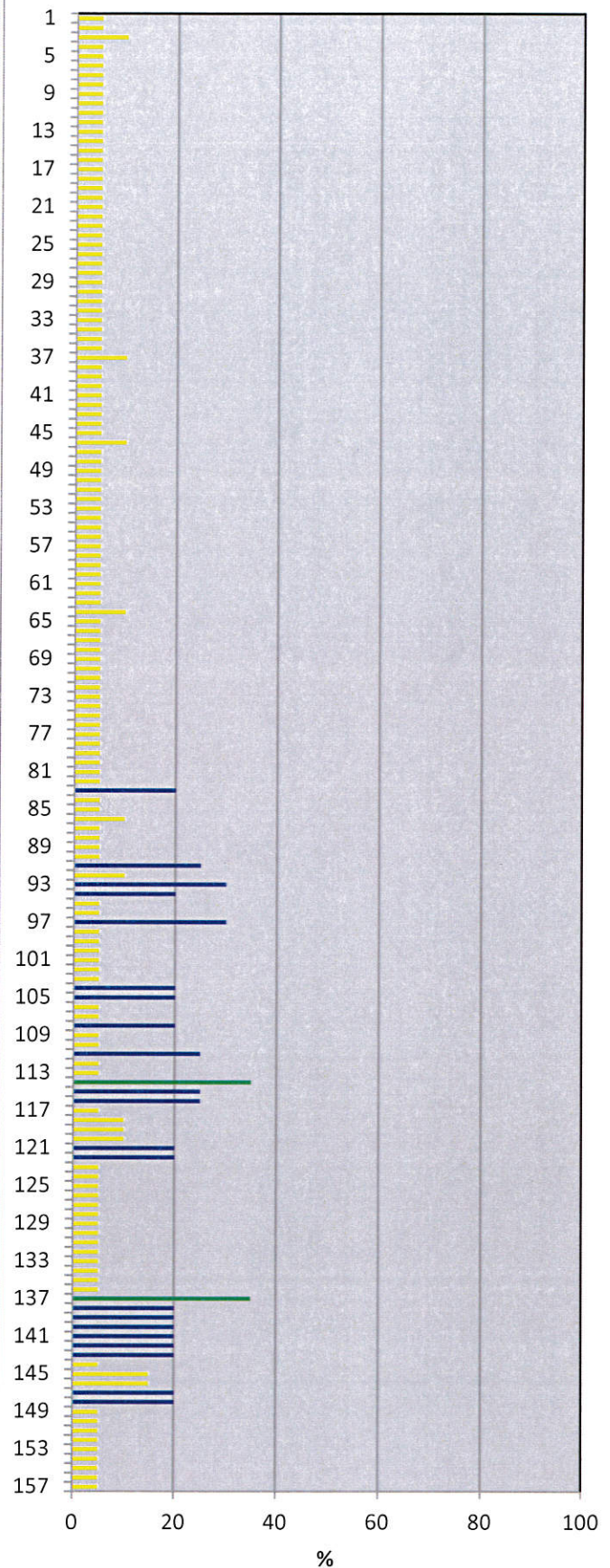
Jt#	Wall Loss	Pitting	Damage
151	5	55	Pitting
152	5	55	Pitting
153	5	55	Pitting
154	5	55	Pitting
155	5	35	Pitting
156	5	55	Pitting
157	5	35	Pitting



### Pitting 1 to 157

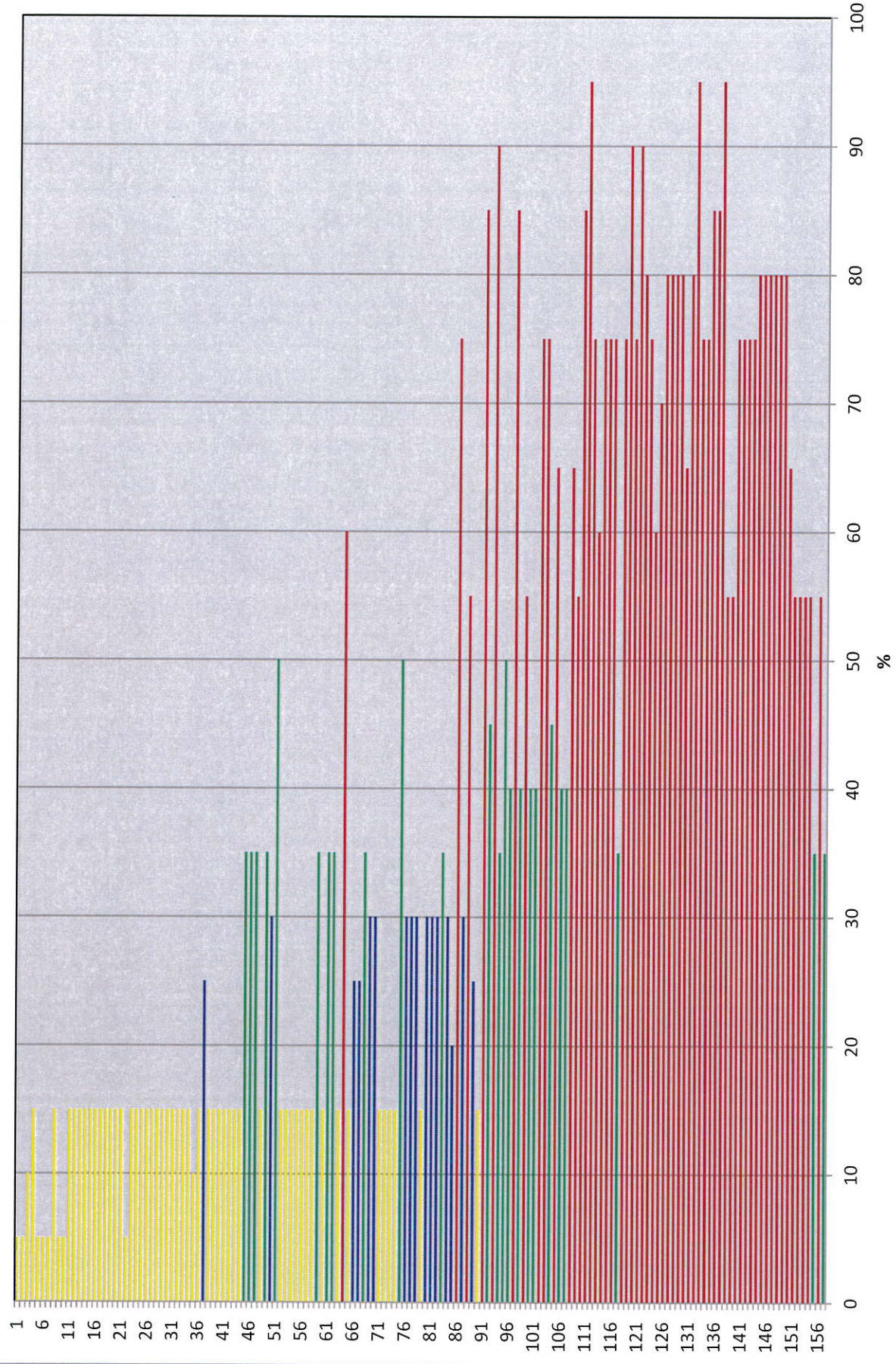


### Wall Loss 1 to 157



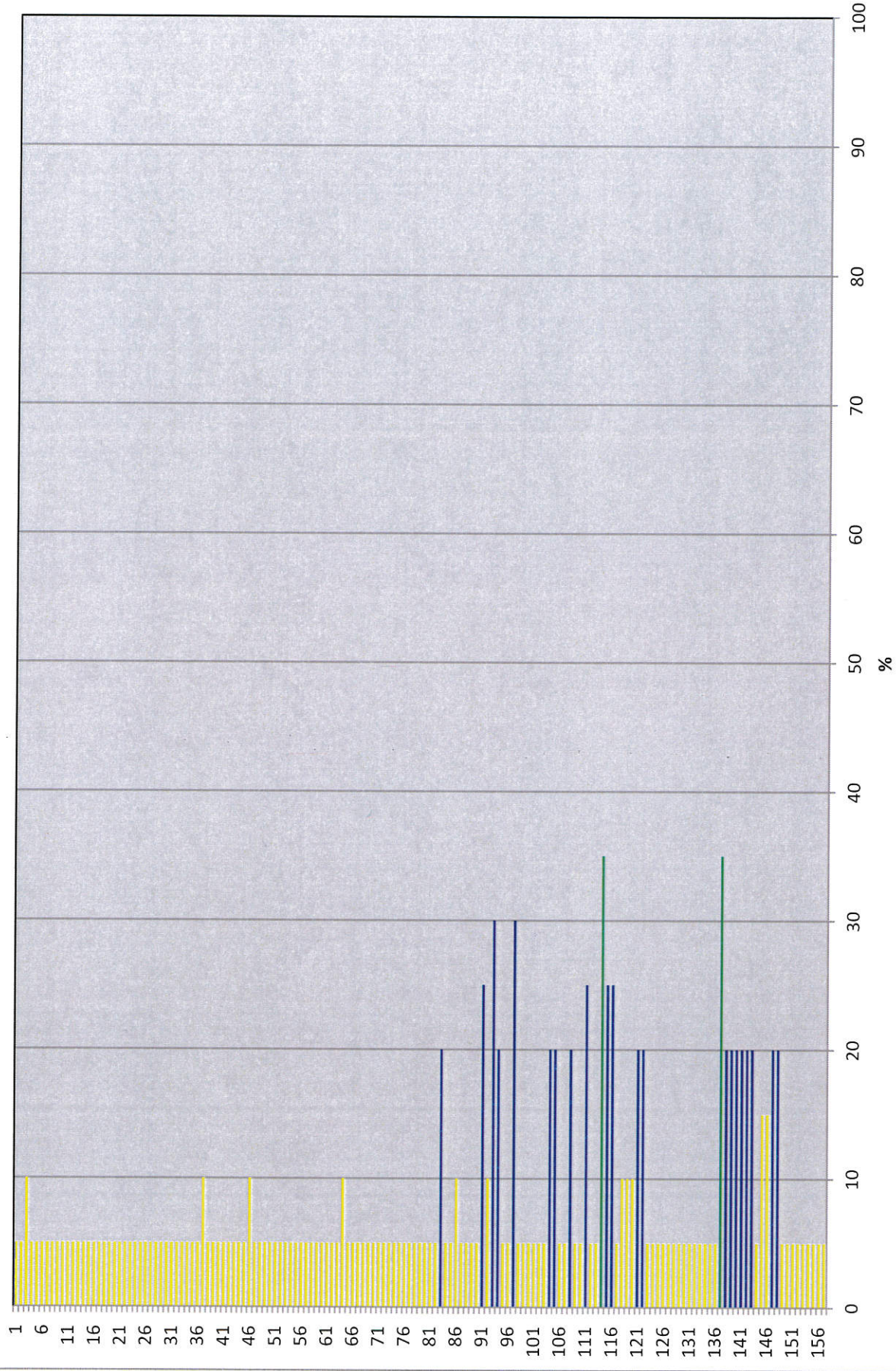


## Pitting 1 to 157





# Wall Loss 1 to 157





## Daily Abandonment Report

Operator: Strategic Oil & Gas Ltd.

Reporting To: Ken Nikiforuk

Consultant: Shayne Stahl

Tel2:

Tel1: (780) 841-8106

UWI: 302M736010117152				WELL: Strategic et al Cameron 2M-73				DATE: 01-Feb-2019			
24 Hr Summary: POOH, RIH with over shot, fished rods, hot watered, laid down rods.								END: 05-Feb-2019			
Formation: Sulphur Point				Surf Loc: M73 60-10N 117-15W				Licence: 2026		Day #: 2	
Objective: Abandon Sulphur Point Zone		Abandonment Type: Downhole		Serv Rig Start: 31-Jan-2019		Serv Rig End					
Operations at 6:00 : Install BOPs, POOH and inspect tbgs.						AFE #: 19ABCAM006		AFE Estimate: \$165,364.00			
Daily Cost:		\$25,462		Previous Cumulative Cost:		\$25,573		Cum Cost:		\$51,035	
Ground:	776.10	m	KB To TH	0.00	m	Open Hole:	mKB	Date	Perf Formation	Top	Base
KB to Grd:	5.10	m	Tubing:	73	mm	Bot at:	1501.55	m	29-Jan-11	Sulphur Point	1485.0 1488.5
TD (MD):	1,522.00	m	Casing:	139.7	mm	Set at:	1522	m	29-Jan-11	Sulphur Point	1488.5 1492.0
PBTD:	1,507.00	m	Liner:		mm	Top at:		m	29-Jan-11	Sulphur Point	1494.0 1498.0
BOP Drill:			BOP Press Test:			Function Test:					
SITP:	26	kPa	SICP:	1147	kPa	SCV:	kPa	H <sub>2</sub> S	%		

Remarks:

[illegible]

Total:	12.5
--------	------

Equipment on Location:

Reservoir Fluids Summary	Reset	<input type="checkbox"/> Gas:	Daily:	10³m³/d	Cum:	0	10³m³	Tubing volume:		m³						
	Cums	<input type="checkbox"/> Oil or Condensate:	Daily:	m³	Cum:	0	m³	Csg. ann vol:		m³						
		<input type="checkbox"/> Water:	Daily:	m³	Cum:	0	m³	Open hole vol:		m³						
	Time Swabbed/Flowed:		Daily:	0.00	hrs	Cum:	hrs		Total:	0	m³					
Load Fluids	Reset	<input type="checkbox"/> OIL	Used	m³	Cum	0	m³	Rec	m³	Cum	0	m³	To Rec	0	m³	
	Cums	<input type="checkbox"/> WATER	Used	12	m³	Cum	30	m³	Rec	m³	Cum	0	m³	To Rec	30	m³
		<input type="checkbox"/> OTHER	Used	m³	Cum	0	m³	Rec	m³	Cum	0	m³	To Rec	0	m³	
Hours	Service Rig Hours		Daily	12.50	hrs	Cumulative		23.50	hrs	DownTime:		hrs	Cumulative DownTime:			hrs
	Personnel on Location		Rig:	6		Service:		5		Company:		1	Total Personnel:			12
	Weather: Clear		Temp		-34	°C	Lease: Good					Roads: Good				
Manager:								Programmed By:								





Tel2:  
Tel1: (780) 841-8106

Page 1 of 1