

Strategic Oil & Gas Ltd.
Final Well Operations Report
Strategic et al Cameron M-73
Well ID – 1765
300/M73601011715/0

- Jan 28, 2019 :** MIRU Global #9. Performed SCVF test for 15 minutes. No bubbles. Bled off gas head (0.26 e3m3 in 45 minutes).
- Jan 29, 2019 :** Unseated BHP. Pumped 6.0 m3 inhibited fresh water (0.5% CRW132) down tubing. Pumped 15.0 m3 inhibited fresh water down casing. Pulled and laid down rods. Installed and pressure tested BOP's. Unset anchor. Pull and lay down tubing. Inspect on the way out of the hole (yellow – 141, blue – 6, green – 1 and red – 1).
- Jan 30, 2019 :** RIH with 139.7 mm 10K permanent bridge plug at 1405.0 mKB. Filled tubing with 4.2 m3 fresh inhibited water and pressured up to 12000 kPa to set bridge plug. Pumped 6.5 m3 fresh inhibited water. Let wellbore settle for 1 hour and topped up casing with 0.2 m3 fresh inhibited water. Pressure test bridge plug to 7000 kPa for 10 minutes. Solid test. Mixed 0.5 m3 of 1900 kg/m3 cement. Circulated down tubing followed by 4.0 m3 inhibited fresh water. Pulled up five joints and reverse circulated 5.0 m3 inhibited fresh water. No cement in returns. Cement top at 1364.7 mKB.
- Jan 31, 2019 :** Pull and lay down tubing. Topped up casing with 1.5 m3 50/50 inhibited methanol water. Remove BOP's, install wellhead and rig out.
- Feb 6, 2019 :** Inject 500 liters of methanol into pig sender. Performed three cleaning pig runs with air. Performed batch run with 45 liters of inhibitor (1 part CRO9809 and 2 parts diesel). Installed spec blind on pipeline at M-73. Flare volume was 0.014 e3m3 in 30 minutes.

Ken McIntyre
March 6, 2019

WELL TERMINATION RECORD

INSTRUCTIONS:

1. Complete both pages.
2. Send one electronic copy of this form and supporting technical documentation by email to orogo@gov.nt.ca.
3. Send two signed hard copies of this form and supporting technical documentation by courier to:
 Chief Conservation Officer
 Office of the Regulator of Oil and Gas Operations
 4th floor Northwest Tower
 5201 50th Avenue
 Yellowknife NT X1A 3S9

WELL INFORMATION

Well Name	Strategic et al Cameron M-73	Operator	Strategic Oil & Gas Ltd.
Well Type	Development Well (if Other, specify _____)	Contractor	Global Well Servicing Rig 9
Well Identifier	1765	Current Well Status	Suspended

RELATED LICENCES AND AUTHORIZATIONS

Operating Licence No.	NWT-OL-2014-007	Operations Authorization	OA - 1237-001
PRA Licence No.	Production Licence 004	Approval to Alter Condition of Well	ACW - 2018-005

LOCATION INFORMATION
Coordinates Datum: NAD27 (if Other, please specify _____)

Surface	Lat 60 ° 2 ' 51 "	Long 117 ° 29 ' 31 "
Bottom Hole	Lat 60 ° 2 ' 51 "	Long 117 ° 29 ' 31 "

Region: Dehcho Unit M Section 73 Grid 60-10 117-15

ACTIVITY INFORMATION

Target Formation(s)	Sulphur Point	Field/Pool(s)	/
Elevation KB/RT	775.2 m	Ground Level / Seafloor	771.5 m
Spud/Re-entry Date	Jan 28, 2019 days	Total Depth	1657.8 m KB
Rig Release Date	Jan 31, 2019	Total Vertical Depth	1657.8 m KB

CASING AND CEMENTING PROGRAM

O.D. (mm)	Weight (kg/m)	Grade	Setting Depth (m KB)	Cementing (m³)
244.5	53.57	J-55	390.5	30.0 tonnes
139.7	23.07	K-55	1657.8	43.7 tonnes

PLUGGING PROGRAM

Type of Plug	Interval (m KB)	Felt	Setting Depth (m KB)	Cementing (m ³)
Bridge	1364.7-1405.0	No	1405.0	0.5
Select	-	Select		
Select	-	Select		
Select	-	Select		

PERFORATION

Interval (m KB)	Comments
1415.5-1420.5	Sulphur Point - abandoned zone
-	
-	
-	

OTHER

Lost Circulation/Overpressure Zones	
Equipment Left on Site (Describe)	Oil well production equipment
Provision for Re-entry (Describe and attach sketch)	
Other Downhole Completion/Suspension	
Additional Comments	

"I certify that the information provided on this form is true and correct"

Name	Ken Nikiforuk	Phone	(403) 767-2944 Ext
Title	Completions Manager	E-Mail	knikiforuk@sogoil.com
Operator	Strategic Oil & Gas Ltd		
Signature		Date	March 6, 2019
	<i>Responsible Officer of Company</i>		

OROGO use only
 Unique Well Identifier 30 / - - /
 (eg. 300 / A01 60-00 120-00 / 0)

Final Installation Report

Company	STRATEGIC	Reference	TICKET # CS0031068
Prepared for	SHAYNE STAHL	Client #	(780) 841-8106
Sales Rep	WRP DAVE BORLE	Vendor #	
Service Center	HIGH LEVEL	Drawn by	MATT FISCHER
		Date	30/01/2019
		Page	1

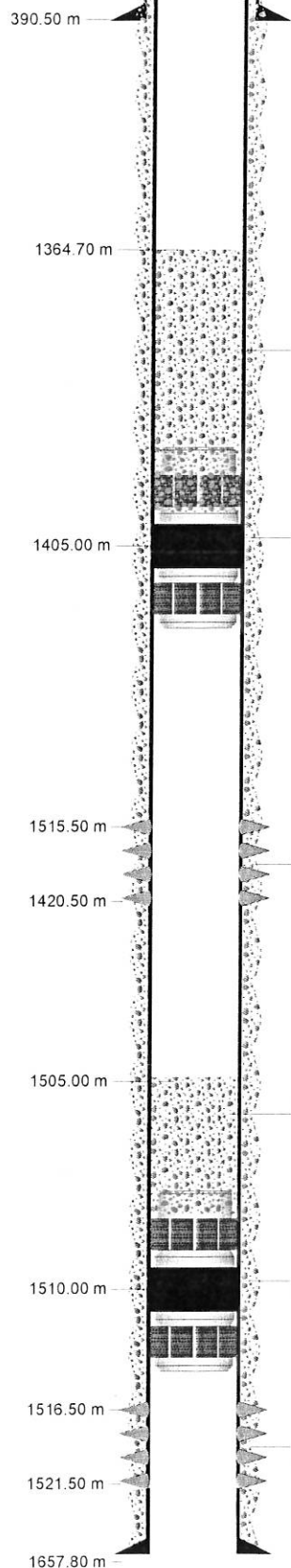
TUBULAR	Size	Weight	Grade	Thread	Depth
Casing 1	244.5mm	53.6	J-55	ST&C	390.5
Casing 2	139.7mm	23.07	K-55	LT&C	1657.8
Tubing	73mm		J-55	EUE	

ITEM	DESCRIPTION	I.D.	O.D.	Length (m)	Depth (m)
A.	KEG RIVER Casing Perforations				
B.	Permanent Bridge Plug 69MPa			0.35m	
C.	5.0M OF 1901 KG/M3 OILWELL "G" CEMENT				
D.	SULPHUR POINT Casing Perforations				
E.	Permanent Bridge Plug 69MPa (TRYTON HM-1).			0.35m	
F.	40.30m of 1901 kg/m3 OILWELL "G" CEMENT				

NOTES

RAN IN HOLE WITH HYDRAULIC SET MECHANICAL PACK-OFF 69MPa BRIDGE PLUG. RAN 147 X 73.0mm J-55 TUBING JOINTS LOCATED CASING COLLARS @ 1381.0mKB & 1394.0mKB. HAD NEGATIVE -2.72m TUBING TO WIRELINE CORRECTION. LANDED PERMNET BRIDGE PLUG @ 1405.0mKB CENTER OF ELEMENT. CORRECTED DEPTH. FILLED TUBING WITH 4.20m3 0.50% CRW-132 INHIBITED FRESH WATER. PRESSURED UP TO 12MPa AND SET BRIDGE PLUG. PULLED 14,000daN TENSION INTO BRIDGE PLUG TO PACK-OFF ELEMENT SYSTEM. FILLED CASING WITH 6.20M3. OPENED CASING TO RIG TANK TO ALLOW AIR TO MIGRATE OUT OF CASING. LET CASING SETTLE FOR ONE HOUR, TOPPED UP CASING WITH 0.20M3 OF INHIBITED WATER. LET SETTLE FOR 30 MIN. PRESSURED UP CASING TO 7MPa. PRESSURE BLED DOWN TO 6920kPa IN 10 MIN. BUMPED PRESSURE TO 7MPa. BLED DOWN TO 6970KPa IN 10 MIN. BUMPED PRESSURE TO 7MPa. HELD 10 MIN. SOLID TEST. ROTATED OFF BRIDGE PLUG. MIXED AND DUMPED 0.50M3 OF 1901KG/M3 SLURRY DOWN TUBING. DISPLACED WITH 4.0M3 OF FRESH INHIBITED WATER. PULLED 5 X 73.0MM TUBING JOINTS TO BALANCE. PULLED 5 X 73.0MM TUBING JOINTS. BACKWASHED 5.0M3 INHIBITED WATER. NO CEMENT RETURNS. CALCULATED CEMENT TOP @ 1364.70mKB BASED ON 0.012416 M3/M IN 139.7MM 23.07KG/M CASING

This document is confidential correspondence between our company and its customer. It may not be reproduced in any form, in whole or in part, by any means including any electronic format, nor its contents disclosed to anyone but our employees and employees of our customer



Daily Abandonment Report

Operator: Strategic Oil & Gas Ltd.

Reporting To: Ken Nikiforuk

Consultant: Kurt Hewitt

Tel2:

Tel1: (780) 830-8303

[illegible]



Tel2:
Tel1: (780) 830-8303

Page 1 of 1



Tel2:
Tel1: (780) 841-8106

Remarks:	
----------	--

Total:	4
--------	---

Equipment on Location:

Page 1 of 1

Operator: Strategic Oil & Gas Ltd.

Reporting To: Ken Nikiforuk

Consultant: Shayne Stahl

Tel2:
Tel1: (780) 841-8106

UWI: 300M736010117150		WELL: Strategic et al Cameron M-73.		DATE: 30-Jan-2019					
24 Hr Summary: RIH and set PBP at 1405 mKB, tested to 7 MPA, circ .5 m3 cement on BP, La									
Formation: Sulphur Point		Surf Loc: M-73 60-10N 117-15W		Licence: 1765	Day #: 3				
Objective: Abandon Sulphur Point Zone		Abandonment Type: Downhole		Serv Rig Start: 28-Jan-2019	Serv Rig End: 31-Jan-2019				
Operations at 6:00: Remove BOPs and install wellhead.				AFE #: 19ABCAM005	AFE Estimate: \$159,764.00				
Daily Cost: \$26,550		Previous Cumulative Cost: \$66,555		Cum Cost: \$93,105					
Ground:	771.50 m	KB To TH:	2.98 m	Open Hole:	mKB				
KB to Grd:	3.70 m	Tubing:	73 mm	Bot at:	m				
TD (MD):	1,657.80 m	Casing:	139.7 mm	Set at:	1657.8 m				
PBTD:	1,505.00 m	Liner:	mm	Top at:	m				
BOP Drill:		BOP Press Test:		Function Test: yes					
SITP:	N/A kPa	SICP:	0 kPa	SCV:	kPa H ₂ S %				
Remarks:									
Time From	Time To	Hours	Code	Comments					
07:00	07:30	0.5	SAFE	Conducted crew safety and operations meeting. Swept lease for LEL's and H ₂ S. Function tested crown saver, air kills, blind rams, 73.0mm pipe rams and annular.					
07:30	12:00	4.5	TRPTBG	Made up, tallied, picked up and RIH with Tryton 139.7mm hydraulic set PBP, setting tool, MCL and 147 jts 73.0mm tbg.					
				Located csg collars at 1381.0 & 1394.0 mKB. Negative 2.72m tally correction.					
				Landed PBP CE at 1405.0 mKB corrected depth, filled tbg with 4.20 m ³ 0.50% CRW-132 inhibited fresh water. Pressured up to 12.0 MPA and set BP. Pulled 14,000 daN into BP to pack off elements.					
12:00	14:30	2.5	PTST	Filled csg with 6.50 m ³ . Opened csg to rig tank to allow air to migrate out of csg. Let csg settle for 1 hour, topped up csg with 0.20 m ³ inhibited water. Let settle for 30 mins.					
				Pressured up csg to 7.0 MPA, pressure bled down to 6920 kpa in 10 mins, bumped pressure up to 7000 kpa, bled down to 6970 kpa in 10 mins, bumped to 7000 kpa, held stable for 10 mins.					
14:30	16:00	1.5	CIRC	Mixed up 0.50 m ³ 1900 kg/m ³ cement, poured down tbg, displaced cement with 4.0 m ³ inhibited water down tbg. Pulled 5 jts tbg. Back washed with 5.0 m ³ inhibited water. No cement returns.					
				Calculated cement top is 1364.70 mKB, based on 0.012416 m ³ /m in 139.7mm 23.07 kg/m csg.					
16:00	19:00	3	TRPTBG	POOH and laid down 73.0mm tbg.					
				Secured well, drained pump and lines, SDFN.					
Total: 12									
Equipment on Location:									
Reservoir Fluids Summary	Reset	<input type="checkbox"/> Gas:	Daily:	10 ³ m ³ /d	Cum:	0.58 10 ³ m ³	Tubing volume:	m ³	
	Cums	<input type="checkbox"/> Oil or Condensate:	Daily:	m ³	Cum:	0 m ³	Csg. ann vol:	m ³	
		<input type="checkbox"/> Water:	Daily:	m ³	Cum:	0 m ³	Open hole vol:	m ³	
	Time Swabbed/Flowed:	Daily:	0.00 hrs	Cum:	hrs	Total:	0 m ³		
Load Fluids	Reset	<input type="checkbox"/> OIL	Used	m ³	Cum	0 m ³	Rec	m ³	
	Cums	<input type="checkbox"/> WATER	Used	10.7 m ³	Cum	31.7 m ³	Rec	m ³	
		<input type="checkbox"/> OTHER	Used	m ³	Cum	0 m ³	Rec	m ³	
Hours	Service Rig Hours	Daily	12.00 hrs	Cumulative	35.00 hrs	DownTime:	hrs	Cumulative DownTime:	hrs
	Personnel on Location	Rig:	6	Service:	5	Company:	1	Total Personnel:	12
	Weather: Snow/Wind	Temp	-19 °C	Lease:	Good	Roads: Good			
Manager:			Programmed By:						



Tel1: (780) 841-8106

Manager:	Programmed By:
----------	----------------



114-172 Clearview Drive Red Deer County, AB T4E 0A1

Field Ticket
Contact
Phone

P93009

Chad Rookes

(780)512-5009

Customer Information

Company Name	Strategic Oil & Gas Ltd	Date	January 29, 2019
Surface Location	300M736010117150	AFE No.	
UWI	300M736010117150	Contract	
Rig Name & #	Global # 9	Co. Rep	Shayne Stahl
Area	Steen River	Code #	

Wellhead Tubing Inspection

Qty	Description	Unit Price	Total
149	Joints of 73.0mm, 9.67Kg, J55, EUE Tubing Inspected	\$ 15.00	\$ 2,235.00
400	Kms From Base & Return	\$ 1.50	\$ 600.00
Sub Total			\$ 2,835.00
10% Discount			\$ -283.50
New Sub Total			\$ 2,551.50
GST			\$ 127.58
Total			\$ 2,679.08

Ultra Sonic Measurements		
Jt #	Wall Min	Wall Max
1	0.214	0.219
51	0.218	0.224
102	0.218	0.224

Head	60H15
Console	B0402
T-MGN	100H
R-WDS	280M

0-15%	Yellow	141
16-30%	Blue	6
31-50%	Green	1
51+%	Red	1
Total		149

Order of Tubing Pulled	
1	73mm Eue J55 Tubing
1	73mm Eue J55 3.12m Pup
143	73mm Eue J55 Tubing
1	Anchor
4	73mm Eue J55 Tubing
1	Pump Seating Nipple
1	Nipple Gas Vent
1	73mm Eue J55 Tubing
1	Bottom Hole

Notes	Time Requested	2:00 PM	Inspection Start Time	3:55 PM
Tubing was mostly yellow band throughout. There was pitting in most of the yellow band joints but they remained yellow.				

Inspector Cyril Gorman

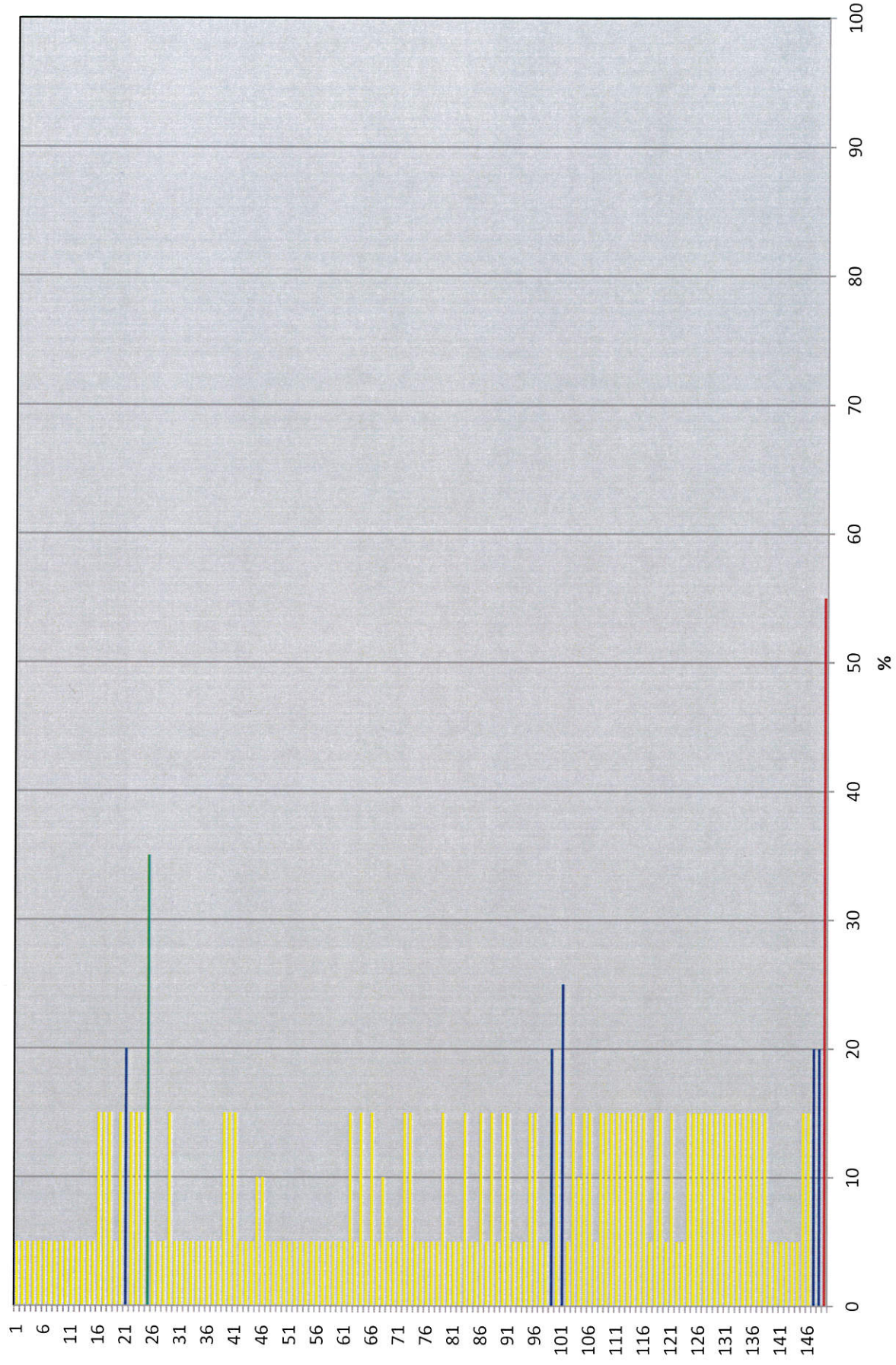
Customer _____

Jt#	Wall Loss	Pitting	Damage
1	5	5	
1	Ultrasonic Wall Min: 0.214 Max: 0.219		
2	5	5	
3	5	5	
4	5	5	
5	5	5	
6	5	5	
7	5	5	
8	5	5	
9	5	5	
10	5	5	
11	5	5	
12	5	5	
13	5	5	
14	5	5	
15	5	5	
16	5	15	Pitting
17	5	15	Pitting
18	5	15	Pitting
19	5	5	
20	5	15	Pitting
21	10	20	Wall Loss & Pitting
22	5	15	Pitting
23	5	15	Pitting
24	5	15	Pitting
25	20	35	Wall Loss & Pitting
26	5	5	
27	5	5	
28	5	5	
29	5	15	Pitting
30	5	5	
31	5	5	
32	5	5	
33	5	5	
34	5	5	
35	5	5	
36	5	5	
37	5	5	
38	5	5	
39	5	15	Pitting
40	5	15	Pitting
41	5	15	Pitting
42	5	5	
43	5	5	
44	5	5	
45	5	10	Pitting
46	5	10	Pitting
47	5	5	
48	5	5	
49	5	5	
50	5	5	

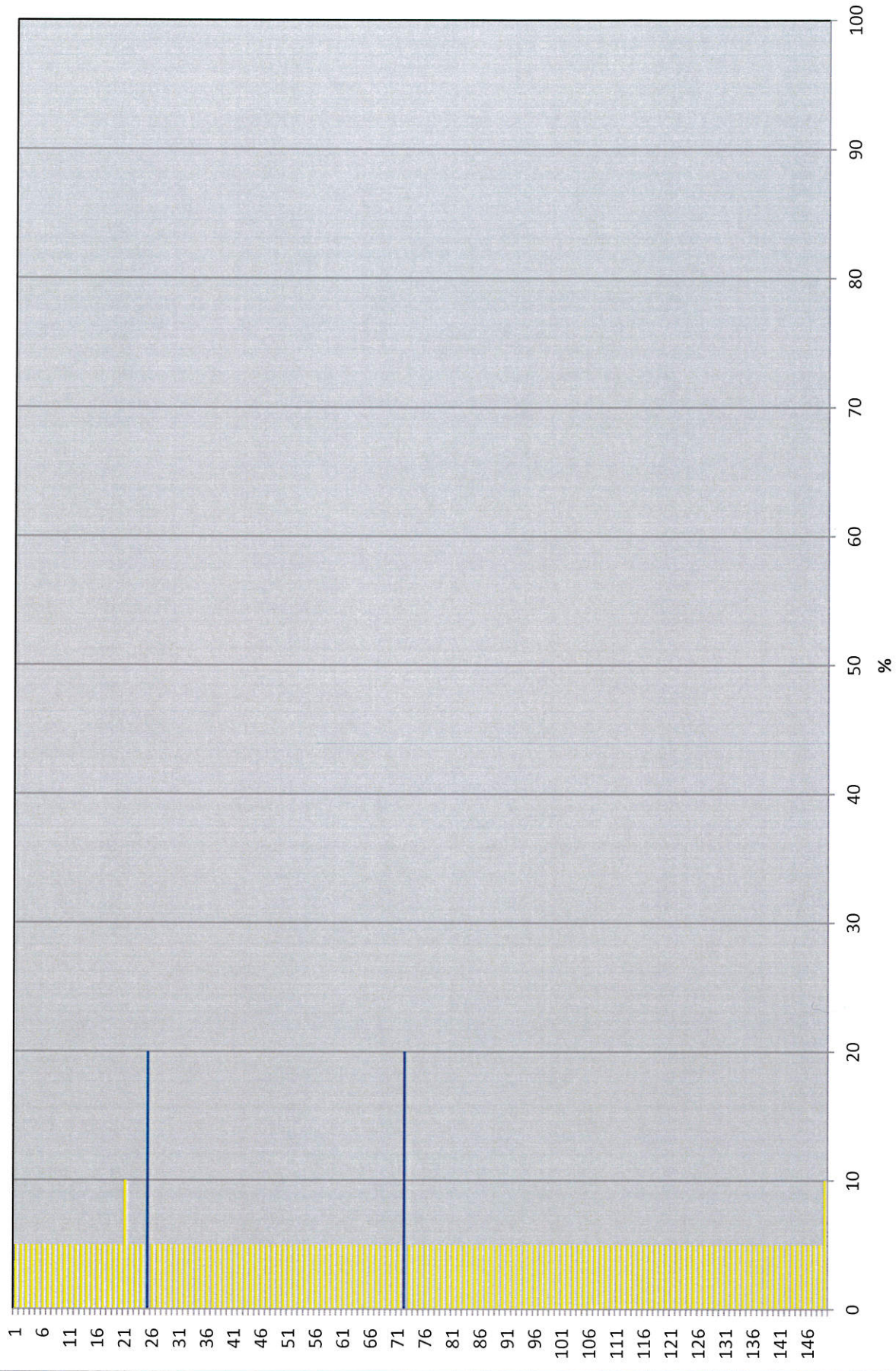
Jt#	Wall Loss	Pitting	Damage
51	5	5	
51	Ultrasonic Wall Min: 0.218 Max: 0.224		
52	5	5	
53	5	5	
54	5	5	
55	5	5	
56	5	5	
57	5	5	
58	5	5	
59	5	5	
60	5	5	
61	5	5	
62	5	15	Pitting
63	5	5	
64	5	15	Pitting
65	5	5	
66	5	15	Pitting
67	5	5	
68	5	10	Pitting
69	5	5	
70	5	5	
71	5	5	
72	20	15	Wall Loss & Pitting
73	5	15	Pitting
74	5	5	
75	5	5	
76	5	5	
77	5	5	
78	5	5	
79	5	15	Pitting
80	5	5	
81	5	5	
82	5	5	
83	5	15	Pitting
84	5	5	
85	5	5	
86	5	15	Pitting
87	5	5	
88	5	15	Pitting
89	5	5	
90	5	15	Pitting
91	5	15	Pitting
92	5	5	
93	5	5	
94	5	5	
95	5	15	Pitting
96	5	15	Pitting
97	5	5	
98	5	5	
99	5	20	Pitting
100	5	15	Pitting

Jt#	Wall Loss	Pitting	Damage
101	5	25	Pitting
102	5	5	
102	Ultrasonic Wall Min: 0.218 Max: 0.224		
103	5	15	Pitting
104	5	10	Pitting
105	5	15	Pitting
106	5	15	Pitting
107	5	5	
108	5	15	Pitting
109	5	15	Pitting
110	5	15	Pitting
111	5	15	Pitting
112	5	15	Pitting
113	5	15	Pitting
114	5	15	Pitting
115	5	15	Pitting
116	5	15	Pitting
117	5	5	
118	5	15	Pitting
119	5	15	Pitting
120	5	5	
121	5	15	Pitting
122	5	5	
123	5	5	
124	5	15	Pitting
125	5	15	Pitting
126	5	15	Pitting
127	5	15	Pitting
128	5	15	Pitting
129	5	15	Pitting
130	5	15	Pitting
131	5	15	Pitting
132	5	15	Pitting
133	5	15	Pitting
134	5	15	Pitting
135	5	15	Pitting
136	5	15	Pitting
137	5	15	Pitting
138	5	15	Pitting
139	5	5	
140	5	5	
141	5	5	
142	5	5	
143	5	5	
144	5	5	
145	5	15	Pitting
146	5	15	Pitting
147	5	20	Pitting
148	5	20	Pitting
149	10	55	Wall Loss & Pitting

Pitting 1 to 149



Wall Loss 1 to 149



Operator: Strategic Oil & Gas Ltd.

Reporting To: Ken Nikiforuk

Consultant: Shayne Stahl

Tel2:

Tel1: (780) 841-8106

UWI: 300M736010117150		WELL: Strategic et al Cameron M-73.		DATE: 28-Jan-2019	
24 Hr Summary: Moved on and rigged up. Bled off csg gas.					END: 31-Jan-2019
Formation: Sulphur Point		Surf Loc: M-73 60-10N 117-15W		Licence: 1765	Day #: 1
Objective: Abandon Sulphur Point Zone		Abandonment Type: Downhole		Serv Rig Start: 28-Jan-2019	Serv Rig End: 31-Jan-2019
Operations at 6:00: Kill well, lay down rods.				AFE #: 19ABCAM005	AFE Estimate: \$159,764.00
Daily Cost: \$34,394		Previous Cumulative Cost: \$0		Cum Cost: \$34,394	
Ground:	771.50 m	KB To TH:	2.98 m	Open Hole:	mKB
KB to Grd:	3.70 m	Tubing:	73 mm	Bot at:	1430.22 m
TD (MD):	1,657.80 m	Casing:	139.7 mm	Set at:	1657.8 m
PBTD:	1,505.00 m	Liner:	mm	Top at:	m
BOP Drill:		BOP Press Test:		Function Test:	
SITP:	18 kPa	SICP:	1972 kPa	SCV:	kPa H ₂ S %

Remarks:

Time From	Time To	Hours	Code	Comments
07:00	07:30	0.5	SAFE	Conducted crew safety and operations meeting. Function tested air kills. Swept lease for LEL's and H ₂ S.
07:30	09:30	2	WLHD	Removed BOPs with picker, installed wellhead. Tied on flowlines on L-73.
09:30	12:00	2.5	MOVE	Moved rig and equipment from L-73 to location, spotted to Strategic and OROGO specs.
				Removed horses head with picker, spotted BOP's and power tongs by pump jack.
12:00	16:00	4	RIG	Rigged up rig and equipment, rigged up p-tank and flare stack, rigged in air trailer.
				Hauled in 60.0 m ³ fresh water.
				Conducted walk around rig inspection, function tested crown saver.
16:00	17:30	1.5	FLOTK	Bubble tested surface vent, no bubbles in 15 mins.
				Bled off csg gas head, started flowing emulsion at 260 kpa. Shut in csg.
				Total gas flared 0.26 E ³ M ³ , could not get gas rate due to pressure drop and gas depletion.
				Flared for 45 mins. Blew out lines with steam.
				Tbg was froze, tarped in wellhead to warm up over night.
17:30	18:00	0.5	SDFN	Secured well, SDFN.

Total: 11

Equipment on Location:

Reservoir Fluids Summary	Reset <input type="checkbox"/> Gas:	Daily: 0.26 10 ³ m ³ /d	Cum: 0.26 10 ³ m ³	Tubing volume:	m ³		
	Cums <input type="checkbox"/> Oil or Condensate:	Daily: m ³	Cum: m ³	Csg. ann vol:	m ³		
	<input type="checkbox"/> Water:	Daily: m ³	Cum: m ³	Open hole vol:	m ³		
	Time Swabbed/Flowed:	Daily: 0.00 hrs	Cum: hrs	Total:	0 m ³		
Load Fluids	Reset <input type="checkbox"/> OIL	Used m ³	Cum m ³	Rec m ³	Cum m ³	To Rec m ³	
	Cums <input type="checkbox"/> WATER	Used m ³	Cum 0 m ³	Rec m ³	Cum 0 m ³	To Rec 0 m ³	
	<input type="checkbox"/> OTHER	Used m ³	Cum m ³	Rec m ³	Cum m ³	To Rec m ³	
Hours	Service Rig Hours	Daily 11.00 hrs	Cumulative 11.00 hrs	DownTime:	hrs	Cumulative DownTime:	hrs
	Personnel on Location	Rig: 6	Service: 8	Company:	1	Total Personnel:	15
	Weather: Clear	Temp -27 °C	Lease: Good	Roads: Good			
Manager:		Programmed By:					