

**Strategic Oil & Gas Ltd.**  
**Final Well Operations Report**  
**Strategic et al Cameron L-73**  
**Well ID – 2033**  
**300/L73601011715/0**

**Jan 24, 2019 :** MIRU Global #9.

**Jan 25, 2019 :** Performed SCVF test for 15 minutes. No bubbles. Bled off gas head ( 3.2 e3m3 in 30 minutes ). Pumped 5.0 m3 inhibited fresh water ( 0.5% CRW132 ) down tubing. Unseated BHP. Pumped 3.0 m3 inhibited fresh water down tubing. Pumped 12.0 m3 inhibited fresh water down casing. Pulled and laid down rods. BHP not recovered. Installed and pressure tested BOP's. Unset anchor.

**Jan 26, 2019 :** Pull and lay down tubing. Inspect on the way out of the hole ( yellow – 100, blue – 5, green – 1 and red – 43 ). RIH and set 139.7 mm 10K permanent bridge plug at 1405.0 mKB. Filled well with 9.0 m3 fresh inhibited water. Pressure test bridge plug to 7000 kPa for 10 minutes. Solid test. Mixed 0.5 m3 of 1700 kg/m3 cement. Circulated down tubing followed by 4.0 m3 inhibited fresh water. Pulled up five joints and reverse circulated 5.0 m3 inhibited fresh water. No cement in returns. Cement top at 1363.0 mKB.

**Jan 27, 2019 :** Pull and lay down tubing. Topped up casing with 1.0 m3 50/50 inhibited methanol water.

**Jan 25, 2019 :** Remove BOP's, install wellhead and rig out.

**Feb 4, 2019 :** Mobilize equipment for pipeline discontinuation.

**Feb 5, 2019 :** Inject 500 liters of methanol into pig sender. Performed three cleaning pig runs with air. Performed batch run with 30 liters of inhibitor ( 1 part CRO9809 and 2 parts diesel ). Installed spec blind on pipeline at L-73. Flare volume was 0.005 e3m3 in 30 minutes.

*Ken Miller*  
March 1, 2019

## WELL TERMINATION RECORD

### INSTRUCTIONS:

1. Complete both pages.
2. Send one electronic copy of this form and supporting technical documentation by email to [orogo@gov.nt.ca](mailto:orogo@gov.nt.ca).
3. Send two signed hard copies of this form and supporting technical documentation by courier to:  
 Chief Conservation Officer  
 Office of the Regulator of Oil and Gas Operations  
 4th floor Northwest Tower  
 5201 50th Avenue  
 Yellowknife NT X1A 3S9

### WELL INFORMATION

|                 |  |                     |                             |
|-----------------|--|---------------------|-----------------------------|
| Well Name       | Strategic et al Cameron L-73               | Operator            | Strategic Oil & Gas Ltd.    |
| Well Type       | Development Well (if Other, specify _____) | Contractor          | Global Well Servicing Rig 9 |
| Well Identifier | 2033                                       | Current Well Status | Suspended                   |

### RELATED LICENCES AND AUTHORIZATIONS

|                       |                        |                                     |                |
|-----------------------|------------------------|-------------------------------------|----------------|
| Operating Licence No. | NWT-OL-2014-007        | Operations Authorization            | OA - 1237-001  |
| PRA Licence No.       | Production Licence 004 | Approval to Alter Condition of Well | ACW - 2018-005 |

### LOCATION INFORMATION

**Coordinates**      Datum: NAD27 (if Other, please specify \_\_\_\_\_)

|         |                   |                      |
|---------|-------------------|----------------------|
| Surface | Lat 60 ° 2 ' 38 " | Long 117 ° 29 ' 54 " |
|---------|-------------------|----------------------|

|             |                   |                      |
|-------------|-------------------|----------------------|
| Bottom Hole | Lat 60 ° 2 ' 38 " | Long 117 ° 29 ' 54 " |
|-------------|-------------------|----------------------|

Region: Dehcho    Unit L    Section 73    Grid 60-10 117-15

### ACTIVITY INFORMATION

|                     |                   |                         |             |
|---------------------|-------------------|-------------------------|-------------|
| Target Formation(s) | Sulphur Point     | Field/Pool(s)           | /           |
| Elevation KB/RT     | 774.8 m           | Ground Level / Seafloor | 770.8 m     |
| Spud/Re-entry Date  | Jan 24, 2019 days | Total Depth             | 1450.8 m KB |
| Rig Release Date    | Jan 28, 2019      | Total Vertical Depth    | 1450.8 m KB |

### CASING AND CEMENTING PROGRAM

| O.D. (mm) | Weight (kg/m) | Grade | Setting Depth (m KB) | Cementing (m <sup>3</sup> ) |
|-----------|---------------|-------|----------------------|-----------------------------|
| 219.1     | 35.72         | J-55  | 436.0                | 38.0 tonnes                 |
| 139.7     | 23.07         | J-55  | 1450.8               | 34.0 tonnes                 |
|           |               |       |                      |                             |
|           |               |       |                      |                             |

**PLUGGING PROGRAM**

| Type of Plug | Interval (m KB) | Felt   | Setting Depth (m KB) | Cementing (m <sup>3</sup> ) |
|--------------|-----------------|--------|----------------------|-----------------------------|
| Bridge       | 1363.0-1405.0   | No     | 1405.0               | 0.5                         |
| Select       | -               | Select |                      |                             |
| Select       | -               | Select |                      |                             |
| Select       | -               | Select |                      |                             |


**PERFORATION**

| Interval (m KB) | Comments                       |
|-----------------|--------------------------------|
| 1416.0-1426.0   | Sulphur Point - abandoned zone |
| -               |                                |
| -               |                                |
| -               |                                |

**OTHER**

|   |                               |
|---|-------------------------------|
| Lost Circulation/Overpressure Zones                 |                               |
| Equipment Left on Site (Describe)                   | Oil well production equipment |
| Provision for Re-entry (Describe and attach sketch) |                               |
| Other Downhole Completion/Suspension                |                               |
| Additional Comments                                 |                               |

**"I certify that the information provided on this form is true and correct"**

|           |   |        |                       |
|-----------|---|--------|-----------------------|
| Name      | Ken Nikiforuk   | Phone  | (403) 767-2944 Ext    |
| Title     | Completions Manager   | E-Mail | knikiforuk@sogoil.com |
| Operator  | Strategic Oil & Gas Ltd   |        |                       |
| Signature |  | Date   | February 25, 2019     |
|           | Responsible Officer of Company  |        |                       |

**OROGO use only**
 Unique Well Identifier 30 /        -        -        /         
 (eg.300 / A01 60-00 120-00 / 0)



## Final Installation Report

|                |              |           |                   |
|----------------|--------------|-----------|-------------------|
| Company        | STRATEGIC    | Reference | TICKET #CS0030974 |
| Prepared for   | SHAYNE STAHL | Client #  | (780)841-8106     |
| Sales Rep      | DAVE BORLE   | Vendor #  |                   |
| Service Center | HIGH LEVEL   | Drawn by  | MATT FISCHER      |
|                |              | Date      | 26/01/2019        |
|                |              | Page      | 1                 |

| ITEM | DESCRIPTION  | I.D. | O.D.  | Length (m) | Depth (m) |
|------|--|------|-------|------------|-----------|
| A.   | PBTD 1432.0mKB 1901 KG/M3 CEMENT   |      |       |            |           |
| B.   | SULPHUR POINT CASING PERFORATIONS  |      |       |            |           |
| C.   | SULPHUR POINT CASING PEFORATIONS   |      |       |            |           |
| D.   | 139.7mm 69MPa mechanical bridge plug. Center of element landed @ 1405mKB                                       | n/a  | 117.0 | 0.38       | 1405.0    |
| E.   | 41.66m of 1901 KG/m3 class "G" oilwell cement. 0.50m3 cement slurry volume circulated and balanced into place. |      |       |            | 1363.34m  |

## NOTES

This document is confidential correspondence between our company and its customer. It may not be reproduced in any form, in whole or in part, by any means including any electronic format, nor its contents disclosed to anyone but our employees and employees of our customer.

436.00 m

1363.34 m

1405.00 m

1416.00 m

1420.00 m

1422.00 m

1426.00 m

1432.00 m

1450.00 m

E

D

C

B

A



Tel2:  
Tel1: (780) 830-8303

Page 1 of 1

## Daily Abandonment Report

Operator: Strategic Oil & Gas Ltd.

Reporting To:

Consultant: Kurt Hewitt

Tel2:

Tel1:

[illegible]



Tel1: (780) 841-8106

Page 1 of 1



## Daily Abandonment Report

Operator: Strategic Oil & Gas Ltd.

Reporting To:

Consultant: Shayne Stahl

Tel2:

Tel1: (780) 841-8106

|   |          |     |                            |                                    |     |                             |        |                            |                |                    |      |
|---|----------|-----|----------------------------|------------------------------------|-----|-----------------------------|--------|----------------------------|----------------|--------------------|------|
| UWI: 300L736010117150   |          |     |                            | WELL: Strategic et al Cameron L-73 |     |                             |        | DATE: 28-Jan-2019          |                |                    |      |
| 24 Hr Summary: Removed BOPs and installed wellhead with picker. |          |     |                            |                                    |     |                             |        | END: 28-Jan-2019           |                |                    |      |
| Formation: Sulphur Point  |          |     |                            | Surf Loc: L-73 60-10N 117-15W      |     |                             |        | Licence: 2033              |                | Day #: 5           |      |
| Objective: Abandon Sulphur Point Zone                           |          |     | Abandonment Type: Downhole |                                    |     | Serv Rig Start: 24-Jan-2019 |        | Serv Rig End: 27-Jan-2019  |                |                    |      |
| Operations at 6:00:   |          |     |                            |                                    |     | AFE #: 19ABCAM004           |        | AFE Estimate: \$156,364.00 |                |                    |      |
| Daily Cost:   |          | \$0 |                            | Previous Cumulative Cost:          |     |                             |        | \$99,354                   |                | Cum Cost: \$99,354 |      |
| Ground:   | 770.80   | m   | KB To TH                   | 3.46                               | m   | Open Hole:                  | mKB    | Date                       | Perf Formation | Top                | Base |
| KB to Grd:  | 4.00     | m   | Tubing:                    |                                    | mm  | Bot at:                     | m      |                            |                |                    |      |
| TD (MD):  | 1,450.80 | m   | Casing:                    | 139.7                              | mm  | Set at:                     | 1450.8 | m                          |                |                    |      |
| PBTD:   | 1,427.80 | m   | Liner:                     |                                    | mm  | Top at:                     | m      |                            |                |                    |      |
| BOP Drill:  |          |     | BOP Press Test:            |                                    |     | Function Test: yes          |        |                            |                |                    |      |
| SITP:   | 0        | kPa | SICP:                      | 0                                  | kPa | SCV:                        | kPa    | H <sub>2</sub> S           | %              |                    |      |

Remarks:

[illegible]

|        |   |
|--------|---|
| Total: | 2 |
|--------|---|

Equipment on Location:

|                          |  |        |                                   |                |                                    |                |                |                      |                  |        |                   |
|--------------------------|--|--------|-----------------------------------|----------------|------------------------------------|----------------|----------------|----------------------|------------------|--------|-------------------|
| Reservoir Fluids Summary | Reset <input type="checkbox"/> Gas:              | Daily: | 10 <sup>3</sup> m <sup>3</sup> /d | Cum:           | 3.2 10 <sup>3</sup> m <sup>3</sup> | Tubing volume: |                | m <sup>3</sup>       |                  |        |                   |
|                          | Cums <input type="checkbox"/> Oil or Condensate: | Daily: | m <sup>3</sup>                    | Cum:           | 0 m <sup>3</sup>                   | Csg. ann vol:  |                | m <sup>3</sup>       |                  |        |                   |
|                          | <input type="checkbox"/> Water:                  | Daily: | m <sup>3</sup>                    | Cum:           | 0 m <sup>3</sup>                   | Open hole vol: |                | m <sup>3</sup>       |                  |        |                   |
|                          | Time Swabbed/Flowed:                             | Daily: | hrs                               | Cum:           | hrs                                | Total:         |                | 0 m <sup>3</sup>     |                  |        |                   |
| Load Fluids              | Reset <input type="checkbox"/> OIL               | Used   | m <sup>3</sup>                    | Cum            | 0 m <sup>3</sup>                   | Rec            | m <sup>3</sup> | Cum                  | 0 m <sup>3</sup> | To Rec | 0 m <sup>3</sup>  |
|                          | Cums <input type="checkbox"/> WATER              | Used   | m <sup>3</sup>                    | Cum            | 30 m <sup>3</sup>                  | Rec            | m <sup>3</sup> | Cum                  | 0 m <sup>3</sup> | To Rec | 30 m <sup>3</sup> |
|                          | <input type="checkbox"/> OTHER                   | Used   | m <sup>3</sup>                    | Cum            | 0 m <sup>3</sup>                   | Rec            | m <sup>3</sup> | Cum                  | 0 m <sup>3</sup> | To Rec | 0 m <sup>3</sup>  |
| Hours                    | Service Rig Hours                                | Daily  | hrs                               | Cumulative     | 43.00 hrs                          | DownTime:      | hrs            | Cumulative DownTime: | hrs              |        |                   |
|                          | Personnel on Location                            | Rig:   | 6                                 | Service:       | 5                                  | Company:       | 1              | Total Personnel:     | 12               |        |                   |
|                          | Weather: Clear                                   | Temp   | -27 °C                            | Lease:         | Good                               |                |                |                      | Roads:           | Good   |                   |
| Manager:                 |  |        |                                   | Programmed By: |                                    |                |                |                      |                  |        |                   |



## Daily Abandonment Report

Operator: Strategic Oil & Gas Ltd.

Reporting To:

Consultant: Shayne Stahl

Tel2:

Tel1: (780) 841-8106

|  |          |          |                            |                                    |     |                             |         |                            |                           |                    |      |
|--|----------|----------|----------------------------|------------------------------------|-----|-----------------------------|---------|----------------------------|---------------------------|--------------------|------|
| UWI: 300L736010117150  |          |          |                            | WELL: Strategic et al Cameron L-73 |     |                             |         | DATE: 27-Jan-2019          |                           |                    |      |
| 24 Hr Summary: Laid down tbg, rigged out, topped up csg with methanol water. |          |          |                            |                                    |     |                             |         | END: 28-Jan-2019           |                           |                    |      |
| Formation: Sulphur Point   |          |          |                            | Surf Loc: L-73 60-10N 117-15W      |     |                             |         | Licence: 2033              |                           | Day #: 4           |      |
| Objective: Abandon Sulphur Point Zone  |          |          | Abandonment Type: Downhole |                                    |     | Serv Rig Start: 24-Jan-2019 |         |                            | Serv Rig End: 27-Jan-2019 |                    |      |
| Operations at 6:00: Remove BOPs and install wellhead, move to M-73.          |          |          |                            |                                    |     | AFE #: 19ABCAM004           |         | AFE Estimate: \$156,364.00 |                           |                    |      |
| Daily Cost:  |          | \$19,390 |                            | Previous Cumulative Cost:          |     |                             |         | \$79,964                   |                           | Cum Cost: \$99,354 |      |
| Ground:  | 770.80   | m        | KB To TH                   | 3.46                               | m   | Open Hole:                  | mKB     | Date                       | Perf Formation            | Top                | Base |
| KB to Grd:   | 4.00     | m        | Tubing:                    | 73                                 | mm  | Bot at:                     | 1427.78 |                            |                           |                    |      |
| TD (MD):   | 1,450.80 | m        | Casing:                    | 139.7                              | mm  | Set at:                     | 1450.8  |                            |                           |                    |      |
| PBTD:  | 1,427.80 | m        | Liner:                     |                                    | mm  | Top at:                     |         |                            |                           |                    |      |
| BOP Drill:   |          |          | BOP Press Test:            |                                    |     | Function Test: yes          |         |                            |                           |                    |      |
| SITP:  | 0        | kPa      | SICP:                      | 0                                  | kPa | SCV:                        | kPa     | H <sub>2</sub> S           | %                         |                    |      |

Remarks:

[illegible]

|        |   |
|--------|---|
| Total: | 8 |
|--------|---|

Equipment on Location:

|                          |  |        |                                   |                |                                    |                |                |                |                  |                      |                   |     |
|--------------------------|--|--------|-----------------------------------|----------------|------------------------------------|----------------|----------------|----------------|------------------|----------------------|-------------------|-----|
| Reservoir Fluids Summary | Reset <input type="checkbox"/> Gas:              | Daily: | 10 <sup>3</sup> m <sup>3</sup> /d | Cum:           | 3.2 10 <sup>3</sup> m <sup>3</sup> | Tubing volume: |                | m <sup>3</sup> |                  |                      |                   |     |
|                          | Cums <input type="checkbox"/> Oil or Condensate: | Daily: | m <sup>3</sup>                    | Cum:           | 0 m <sup>3</sup>                   | Csg. ann vol:  |                | m <sup>3</sup> |                  |                      |                   |     |
|                          | <input type="checkbox"/> Water:                  | Daily: | m <sup>3</sup>                    | Cum:           | 0 m <sup>3</sup>                   | Open hole vol: |                | m <sup>3</sup> |                  |                      |                   |     |
|                          | Time Swabbed/Flowed:                             |        | Daily:                            | 0.00 hrs       | Cum:                               | hrs            | Total:         |                | 0 m <sup>3</sup> |                      |                   |     |
| Load Fluids              | Reset <input type="checkbox"/> OIL               | Used   | m <sup>3</sup>                    | Cum            | 0 m <sup>3</sup>                   | Rec            | m <sup>3</sup> | Cum            | 0 m <sup>3</sup> | To Rec               | 0 m <sup>3</sup>  |     |
|                          | Cums <input type="checkbox"/> WATER              | Used   | 1 m <sup>3</sup>                  | Cum            | 30 m <sup>3</sup>                  | Rec            | m <sup>3</sup> | Cum            | 0 m <sup>3</sup> | To Rec               | 30 m <sup>3</sup> |     |
|                          | <input type="checkbox"/> OTHER                   | Used   | m <sup>3</sup>                    | Cum            | 0 m <sup>3</sup>                   | Rec            | m <sup>3</sup> | Cum            | 0 m <sup>3</sup> | To Rec               | 0 m <sup>3</sup>  |     |
| Hours                    | Service Rig Hours                                |        | Daily                             | 8.00 hrs       | Cumulative                         | 43.00 hrs      | DownTime:      |                | hrs              | Cumulative DownTime: |                   | hrs |
|                          | Personnel on Location                            |        | Rig:                              | 6              | Service:                           | 4              | Company:       |                | 1                | Total Personnel:     |                   | 11  |
|                          | Weather: Windy                                   |        | Temp                              | -8 °C          | Lease: Good                        |                |                |                | Roads: Good      |                      |                   |     |
| Manager:                 |  |        |                                   | Programmed By: |                                    |                |                |                |                  |                      |                   |     |

Operator: Strategic Oil &amp; Gas Ltd.

Reporting To:

Consultant: Shayne Stahl

 Tel2:  
 Tel1: (780) 841-8106

|  |                                    |                             |
|--|------------------------------------|-----------------------------|
| UWI: 300L736010117150  | WELL: Strategic et al Cameron L-73 | DATE: 26-Jan-2019           |
| 24 Hr Summary: POOH with tbg, RIH and set PBP at 1405 mKB, tested to 7 MPA, circ .5 m3 c | END: 28-Jan-2019                   |                             |
| Formation: Sulphur Point   | Surf Loc: L-73 60-10N 117-15W      | Licence: 2033               |
| Objective: Abandon Sulphur Point Zone  | Abandonment Type: Downhole         | Serv Rig Start: 24-Jan-2019 |
| Operations at 6:00: Lay down tbg, install wellhead, rig out.                             | AFE #: 19ABCAM004                  | AFE Estimate: \$156,364.00  |
| Daily Cost: \$27,190   | Previous Cumulative Cost: \$52,774 | Cum Cost: \$79,964          |
| Ground: 770.80 m   | KB To TH: 3.46 m                   | Open Hole: mKB              |
| KB to Grd: 4.00 m  | Tubing: 73 mm                      | Bot at: 1427.78 m           |
| TD (MD): 1,450.80 m  | Casing: 139.7 mm                   | Set at: 1450.8 m            |
| PBTD: 1,427.80 m   | Liner: mm                          | Top at: m                   |
| BOP Drill: yes   | BOP Press Test:                    | Function Test: yes          |
| SITP: 0 kPa  | SICP: 0 kPa                        | SCV: kPa                    |
|  |                                    | H <sub>2</sub> S %          |

Remarks:

| Time From | Time To | Hours | Code   | Comments   |
|-----------|---------|-------|--------|--|
| 07:00     | 07:30   | 0.5   | SAFE   | Conducted crew safety and operations meeting. Swept lease for LEL's and H <sub>2</sub> S. Function tested  |
|           |         |       |        | 73mm pipe rams, annular, crown saver and air kills.  |
| 07:30     | 10:30   | 3     | TRPTBG | Picked up on tbg and removed tbg hanger. Rigged in tbg inspector.  |
|           |         |       |        | POOH and laid down tbg. Had to lay down tbg due to pump jack height.   |
|           |         |       |        | 100 - yellow, 5 - blue, 1 - green, 43 - red  |
|           |         |       |        | Conducted blow out drill, when pulling pipe.   |
|           |         |       |        | Laid out tbg anchor and PSN. No BHP in tbg. Jt 134 had a split in the tube.  |
|           |         |       |        | Function tested blind rams.  |
| 10:30     | 13:30   | 3     | TRPTBG | Made up, tallied and RIH with 139.7mm 10K mechanical BP, setting tool, MCL and 148 - jts   |
|           |         |       |        | 73.0mm tbg. Located csg collars @ 1377.0 & 1380.0 mKB. Set PBP CE @ 1405.0 mKB corrected depth.  |
| 13:30     | 16:30   | 3     | PTST   | Filled well with 9.0 m <sup>3</sup> 0.50% CRW-132 inhibited fresh water. Circulated 1.0 m <sup>3</sup> to p-tank.  |
|           |         |       |        | Pressured up to 7.0 MPA, dropped to 6450 kpa in 10 mins, pressured up to 7.0 MPA, dropped to 6780 kpa in 10 mins, pressured up to 7.0 MPA, dropped to 6890 kpa in 10 mins, pressured up to 7.0 MPA, dropped to 6960 kpa in 10 mins, good test. Bumped up pressure 4 times due to foaming of inhibitor. |
| 16:30     | 17:30   | 1     | CIRC   | Mixed up 0.50 m <sup>3</sup> 1700 kg/m <sup>3</sup> cement, pumped down tbg and displaced with 4.0 m <sup>3</sup> inhibited water.   |
| 17:30     | 19:00   | 1.5   | TRPTBG | Pulled 5 jts tbg, back washed with 5.0 m <sup>3</sup> . No cement in returns. Cement top @ 1363.0 mKB.   |
|           |         |       |        | Calculated cement top.   |
|           |         |       |        | Pulled and laid down 25 jts 73.0mm tbg.  |
|           |         |       |        | Secured well, drained pump and lines, SDFN.  |

Total: 12

Equipment on Location:

|                          |                       |   |        |                      |             |                        |                |      |                          |      |        |       |
|--------------------------|-----------------------|---|--------|----------------------|-------------|------------------------|----------------|------|--------------------------|------|--------|-------|
| Reservoir Fluids Summary | Reset                 | <input type="checkbox"/> Gas:               | Daily: | 10 <sup>3</sup> m³/d | Cum:        | 3.2 10 <sup>3</sup> m³ | Tubing volume: | m³   |                          |      |        |       |
|                          | Cums                  | <input type="checkbox"/> Oil or Condensate: | Daily: | m³                   | Cum:        | 0 m³                   | Csg. ann vol:  | m³   |                          |      |        |       |
|                          |                       | <input type="checkbox"/> Water:             | Daily: | m³                   | Cum:        | 0 m³                   | Open hole vol: | m³   |                          |      |        |       |
|                          | Time Swabbed/Flowed:  |   | Daily: | 0.00 hrs             | Cum:        | hrs                    | Total:         | 0 m³ |                          |      |        |       |
| Load Fluids              | Reset                 | <input type="checkbox"/> OIL                | Used   | m³                   | Cum         | 0 m³                   | Rec            | m³   | Cum                      | 0 m³ | To Rec | 0 m³  |
|                          | Cums                  | <input type="checkbox"/> WATER              | Used   | 9 m³                 | Cum         | 29 m³                  | Rec            | m³   | Cum                      | 0 m³ | To Rec | 29 m³ |
|                          |                       | <input type="checkbox"/> OTHER              | Used   | m³                   | Cum         | 0 m³                   | Rec            | m³   | Cum                      | 0 m³ | To Rec | 0 m³  |
| Hours                    | Service Rig Hours     |   | Daily  | 12.00 hrs            | Cumulative  | 35.00 hrs              | DownTime:      | hrs  | Cumulative DownTime: hrs |      |        |       |
|                          | Personnel on Location |   | Rig:   | 6                    | Service:    | 5                      | Company:       | 1    | Total Personnel: 12      |      |        |       |
|                          | Weather: Overcast     |   | Temp   | -4 °C                | Lease: Good |                        |                |      | Roads: Good              |      |        |       |
| Manager:                 |                       |   |        | Programmed By:       |             |                        |                |      |                          |      |        |       |





114-172 Clearview Drive Red Deer County, AB T4E 0A1

Field Ticket  
Contact  
Phone

P93007

Chad Rookes

(780)512-5009

#### Customer Information

|                  |                         |          |                  |
|------------------|-------------------------|----------|------------------|
| Company Name     | Strategic Oil & Gas Ltd | Date     | January 26, 2019 |
| Surface Location | L-73 60-10N,11 7 15w    | AFE No.  |                  |
| UWI              | L-73 60-10N,11 7 15w    | Contract |                  |
| Rig Name & #     | Global # 9              | Co. Rep  | Shayne Stahl     |
| Area             | Peace River, AB         | Code #   |                  |

#### Wellhead Tubing Inspection

| Qty | Description   | Unit Price | Total       |
|-----|---|------------|-------------|
| 149 | Joints of 73.0mm, 9.67Kg, J55, EUE Tubing Inspected | \$ 15.00   | \$ 2,235.00 |
| 420 | Kms From Base & Return                              | \$ 1.50    | \$ 630.00   |

| Ultra Sonic Measurements |          |          |
|--------------------------|----------|----------|
| Jt #                     | Wall Min | Wall Max |
| 1                        | 0.220    | 0.226    |
| 52                       | 0.214    | 0.220    |
| 102                      | 0.216    | 0.219    |

|         |       |
|---------|-------|
| Head    | 60H15 |
| Console | B0402 |
| T-MGN   | 100H  |
| R-WDS   | 280M  |

|               |             |
|---------------|-------------|
| Sub Total     | \$ 2,865.00 |
| 10% Discount  | \$ -286.50  |
| New Sub Total | \$ 2,578.50 |
| GST           | \$ 128.93   |
| Total         | \$ 2,707.43 |

|        |        |     |
|--------|--------|-----|
| 0-15%  | Yellow | 100 |
| 16-30% | Blue   | 5   |
| 31-50% | Green  | 1   |
| 51+%   | Red    | 43  |
| Total  |        | 149 |

| Order of Tubing Pulled |                        |
|------------------------|------------------------|
| 1                      | 73mm Eue J55 Tubing    |
| 1                      | 73mm Eue J55 3.09m Pup |
| 1                      | 73mm Eue J55 0.65m Pup |
| 146                    | 73mm Eue J55 Tubing    |
| 1                      | Anchor                 |
| 2                      | 73mm Eue J55 Tubing    |
| 1                      | Pump Seating Nipple    |
| 1                      | Perforated Joint       |

| Notes  | Time Requested | 7:30 AM | Inspection Start Time | 8:05 AM |
|--|----------------|---------|-----------------------|---------|
| Tubing was almost all Yellow band up to joint 79.<br>Joint 80 to joint 105 mostly Yellow band with some blue and Green Band.<br>Joint 106 to end of the well was all red band except for 1 green Band.<br>Joint 134 had split in it. |                |         |                       |         |

Inspector Cyril Gorman

Customer \_\_\_\_\_

| Jt# | Wall Loss                             | Pitting | Damage              |
|-----|---------------------------------------|---------|---------------------|
| 1   | 5                                     | 15      | Pitting             |
| 1   | Ultrasonic Wall Min: 0.220 Max: 0.226 |         |                     |
| 2   | 5                                     | 15      | Pitting             |
| 3   | 5                                     | 5       |                     |
| 4   | 5                                     | 5       |                     |
| 5   | 5                                     | 5       |                     |
| 6   | 5                                     | 5       |                     |
| 7   | 5                                     | 5       |                     |
| 8   | 5                                     | 10      | Pitting             |
| 9   | 5                                     | 5       |                     |
| 10  | 5                                     | 5       |                     |
| 11  | 5                                     | 5       |                     |
| 12  | 5                                     | 5       |                     |
| 13  | 5                                     | 5       |                     |
| 14  | 5                                     | 5       |                     |
| 15  | 5                                     | 5       |                     |
| 16  | 5                                     | 5       |                     |
| 17  | 5                                     | 5       |                     |
| 18  | 5                                     | 5       |                     |
| 19  | 5                                     | 5       |                     |
| 20  | 5                                     | 10      | Pitting             |
| 21  | 5                                     | 10      | Pitting             |
| 22  | 5                                     | 5       |                     |
| 23  | 5                                     | 10      | Pitting             |
| 24  | 5                                     | 5       |                     |
| 25  | 5                                     | 10      | Pitting             |
| 26  | 5                                     | 10      | Pitting             |
| 27  | 5                                     | 5       |                     |
| 28  | 5                                     | 5       |                     |
| 29  | 10                                    | 10      | Wall Loss & Pitting |
| 30  | 5                                     | 15      | Pitting             |
| 31  | 5                                     | 15      | Pitting             |
| 32  | 5                                     | 15      | Pitting             |
| 33  | 5                                     | 10      | Pitting             |
| 34  | 5                                     | 10      | Pitting             |
| 35  | 5                                     | 15      | Pitting             |
| 36  | 5                                     | 10      | Pitting             |
| 37  | 5                                     | 15      | Pitting             |
| 38  | 5                                     | 5       |                     |
| 39  | 5                                     | 5       |                     |
| 40  | 5                                     | 5       |                     |
| 41  | 5                                     | 5       |                     |
| 42  | 5                                     | 5       |                     |
| 43  | 5                                     | 15      | Pitting             |
| 44  | 5                                     | 5       |                     |
| 45  | 5                                     | 15      | Pitting             |
| 46  | 5                                     | 25      | Pitting             |
| 47  | 5                                     | 15      | Pitting             |
| 48  | 5                                     | 10      | Pitting             |
| 49  | 5                                     | 15      | Wall Loss           |
| 50  | 5                                     | 15      | Wall Loss           |

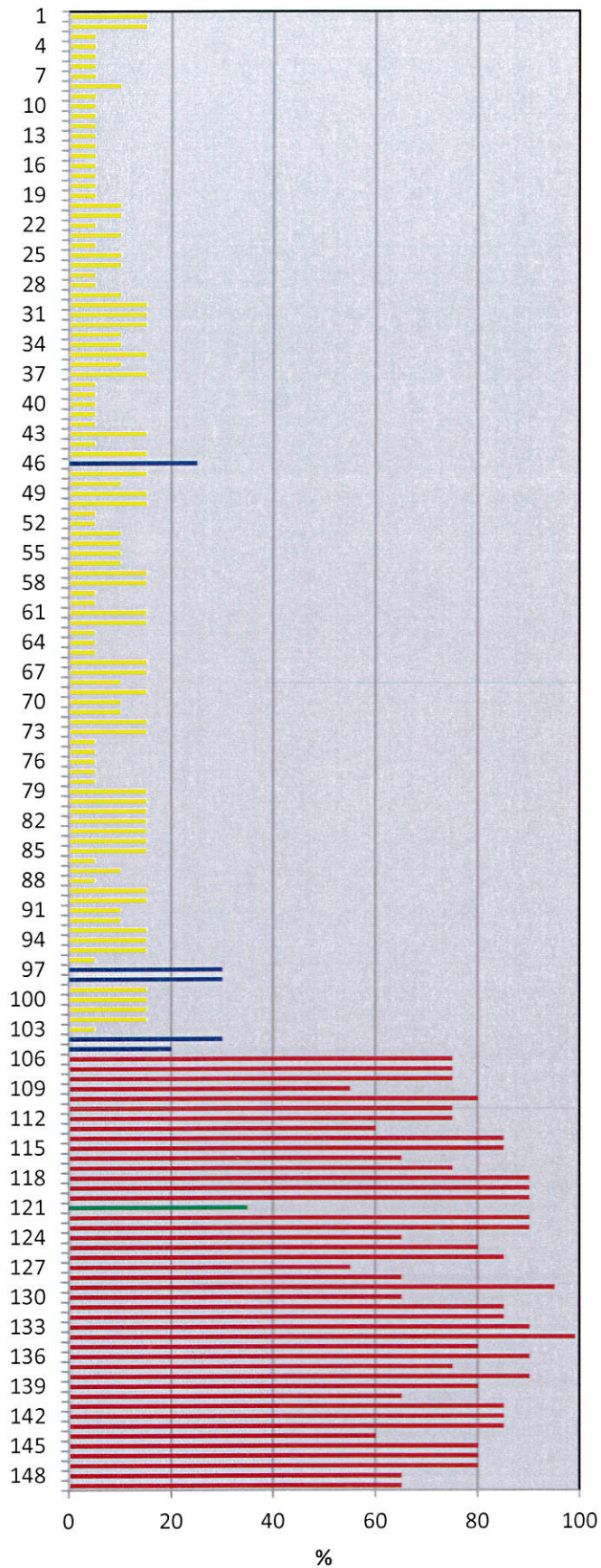
| Jt# | Wall Loss                             | Pitting | Damage  |
|-----|---------------------------------------|---------|---------|
| 51  | 5                                     | 5       |         |
| 52  | 5                                     | 5       |         |
| 52  | Ultrasonic Wall Min: 0.214 Max: 0.220 |         |         |
| 53  | 5                                     | 10      | Pitting |
| 54  | 5                                     | 10      | Pitting |
| 55  | 5                                     | 10      | Pitting |
| 56  | 5                                     | 10      | Pitting |
| 57  | 5                                     | 15      | Pitting |
| 58  | 5                                     | 15      | Pitting |
| 59  | 5                                     | 5       |         |
| 60  | 5                                     | 5       |         |
| 61  | 5                                     | 15      | Pitting |
| 62  | 5                                     | 15      | Pitting |
| 63  | 5                                     | 5       |         |
| 64  | 5                                     | 5       |         |
| 65  | 5                                     | 5       |         |
| 66  | 5                                     | 15      | Pitting |
| 67  | 5                                     | 15      | Pitting |
| 68  | 5                                     | 10      | Pitting |
| 69  | 5                                     | 15      | Pitting |
| 70  | 5                                     | 10      | Pitting |
| 71  | 5                                     | 10      | Pitting |
| 72  | 5                                     | 15      | Pitting |
| 73  | 5                                     | 15      | Pitting |
| 74  | 5                                     | 5       |         |
| 75  | 5                                     | 5       |         |
| 76  | 5                                     | 5       |         |
| 77  | 5                                     | 5       |         |
| 78  | 5                                     | 5       |         |
| 79  | 5                                     | 15      | Pitting |
| 80  | 5                                     | 15      | Pitting |
| 81  | 5                                     | 15      | Pitting |
| 82  | 5                                     | 15      | Pitting |
| 83  | 5                                     | 15      | Pitting |
| 84  | 5                                     | 15      | Pitting |
| 85  | 5                                     | 15      | Pitting |
| 86  | 5                                     | 5       |         |
| 87  | 5                                     | 10      | Pitting |
| 88  | 5                                     | 5       |         |
| 89  | 5                                     | 15      | Pitting |
| 90  | 5                                     | 15      | Pitting |
| 91  | 5                                     | 10      | Pitting |
| 92  | 5                                     | 10      | Pitting |
| 93  | 5                                     | 15      | Pitting |
| 94  | 5                                     | 15      | Pitting |
| 95  | 5                                     | 15      | Pitting |
| 96  | 5                                     | 5       |         |
| 97  | 5                                     | 30      | Pitting |
| 98  | 5                                     | 30      | Pitting |
| 99  | 5                                     | 15      | Pitting |
| 100 | 5                                     | 15      | Pitting |



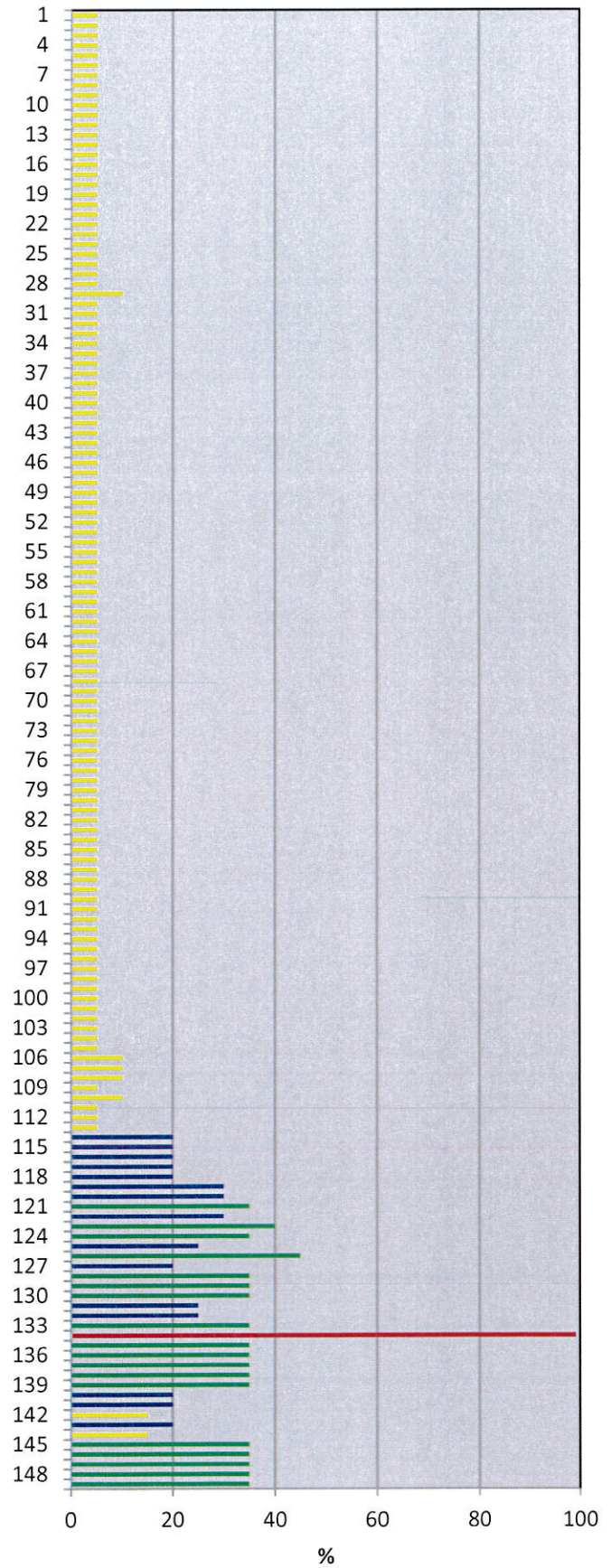
| Jt# | Wall Loss                             | Pitting | Damage              |
|-----|---------------------------------------|---------|---------------------|
| 101 | 5                                     | 15      | Pitting             |
| 102 | 5                                     | 15      | Pitting             |
| 102 | Ultrasonic Wall Min: 0.216 Max: 0.219 |         |                     |
| 103 | 5                                     | 5       |                     |
| 104 | 5                                     | 30      | Pitting             |
| 105 | 5                                     | 20      | Pitting             |
| 106 | 10                                    | 75      | Wall Loss & Pitting |
| 107 | 10                                    | 75      | Wall Loss & Pitting |
| 108 | 10                                    | 75      | Wall Loss & Pitting |
| 109 | 5                                     | 55      | Pitting             |
| 110 | 10                                    | 80      | Wall Loss & Pitting |
| 111 | 5                                     | 75      | Pitting             |
| 112 | 5                                     | 75      | Pitting             |
| 113 | 5                                     | 60      | Pitting             |
| 114 | 20                                    | 85      | Wall Loss & Pitting |
| 115 | 20                                    | 85      | Wall Loss & Pitting |
| 116 | 20                                    | 65      | Wall Loss & Pitting |
| 117 | 20                                    | 75      | Wall Loss & Pitting |
| 118 | 20                                    | 90      | Wall Loss & Pitting |
| 119 | 30                                    | 90      | Wall Loss & Pitting |
| 120 | 30                                    | 90      | Wall Loss & Pitting |
| 121 | 35                                    | 35      | Wall Loss & Pitting |
| 122 | 30                                    | 90      | Wall Loss & Pitting |
| 123 | 40                                    | 90      | Wall Loss & Pitting |
| 124 | 35                                    | 65      | Wall Loss & Pitting |
| 125 | 25                                    | 80      | Wall Loss & Pitting |
| 126 | 45                                    | 85      | Wall Loss & Pitting |
| 127 | 20                                    | 55      | Wall Loss & Pitting |
| 128 | 35                                    | 65      | Wall Loss & Pitting |
| 129 | 35                                    | 95      | Wall Loss & Pitting |
| 130 | 35                                    | 65      | Wall Loss & Pitting |
| 131 | 25                                    | 85      | Wall Loss & Pitting |
| 132 | 25                                    | 85      | Wall Loss & Pitting |
| 133 | 35                                    | 90      | Wall Loss & Pitting |
| 134 | 99                                    | 99      | Split in Tubing     |
| 135 | 35                                    | 80      | Wall Loss & Pitting |
| 136 | 35                                    | 90      | Wall Loss & Pitting |
| 137 | 35                                    | 75      | Wall Loss & Pitting |
| 138 | 35                                    | 90      | Wall Loss & Pitting |
| 139 | 35                                    | 80      | Wall Loss & Pitting |
| 140 | 20                                    | 65      | Wall Loss & Pitting |
| 141 | 20                                    | 85      | Wall Loss & Pitting |
| 142 | 15                                    | 85      | Wall Loss & Pitting |
| 143 | 20                                    | 85      | Wall Loss & Pitting |
| 144 | 15                                    | 60      | Wall Loss & Pitting |
| 145 | 35                                    | 80      | Wall Loss & Pitting |
| 146 | 35                                    | 80      | Wall Loss & Pitting |
| 147 | 35                                    | 80      | Wall Loss & Pitting |
| 148 | 35                                    | 65      | Wall Loss & Pitting |
| 149 | 35                                    | 65      | Wall Loss & Pitting |



### Pitting 1 to 149

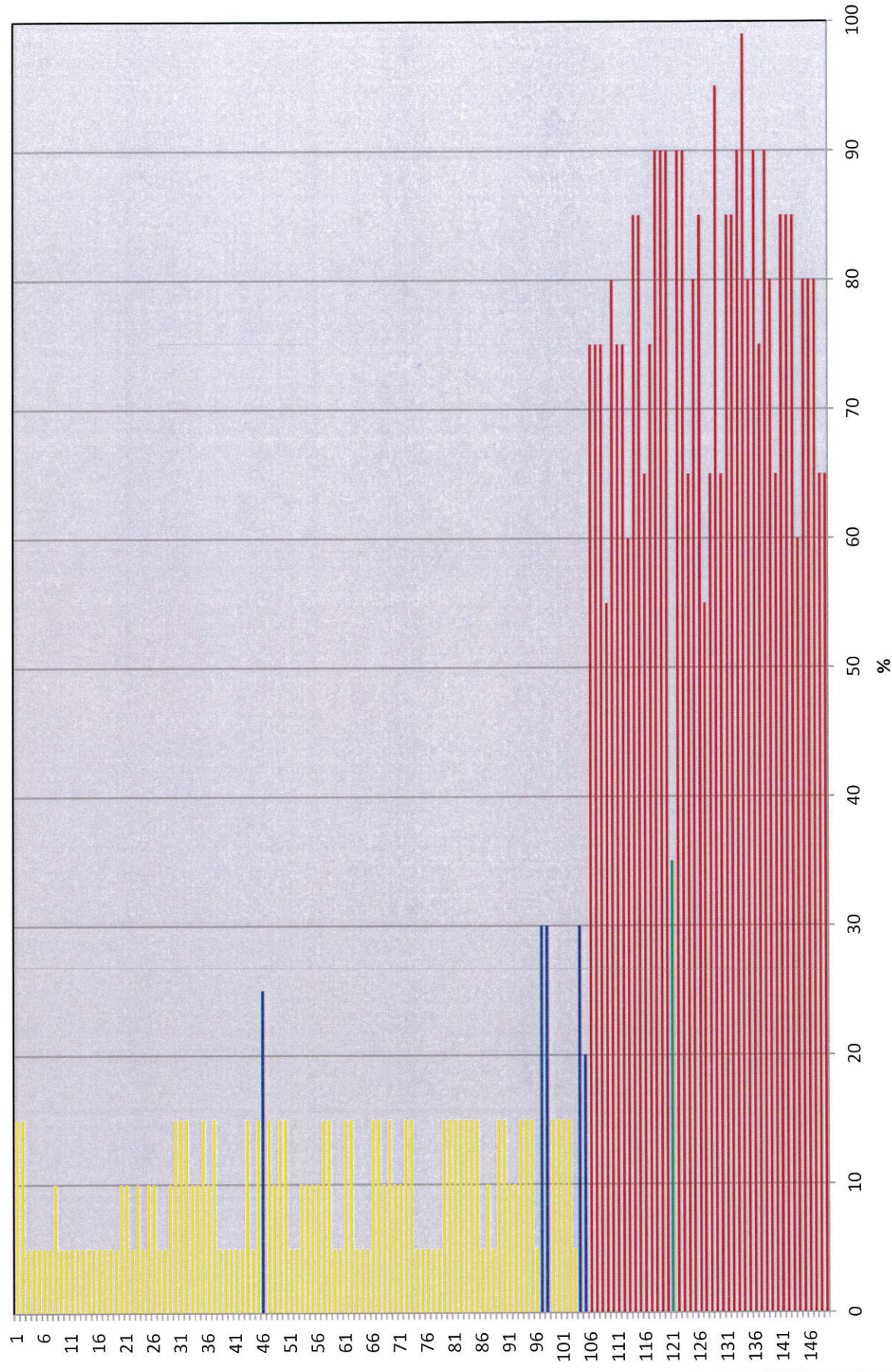


### Wall Loss 1 to 149



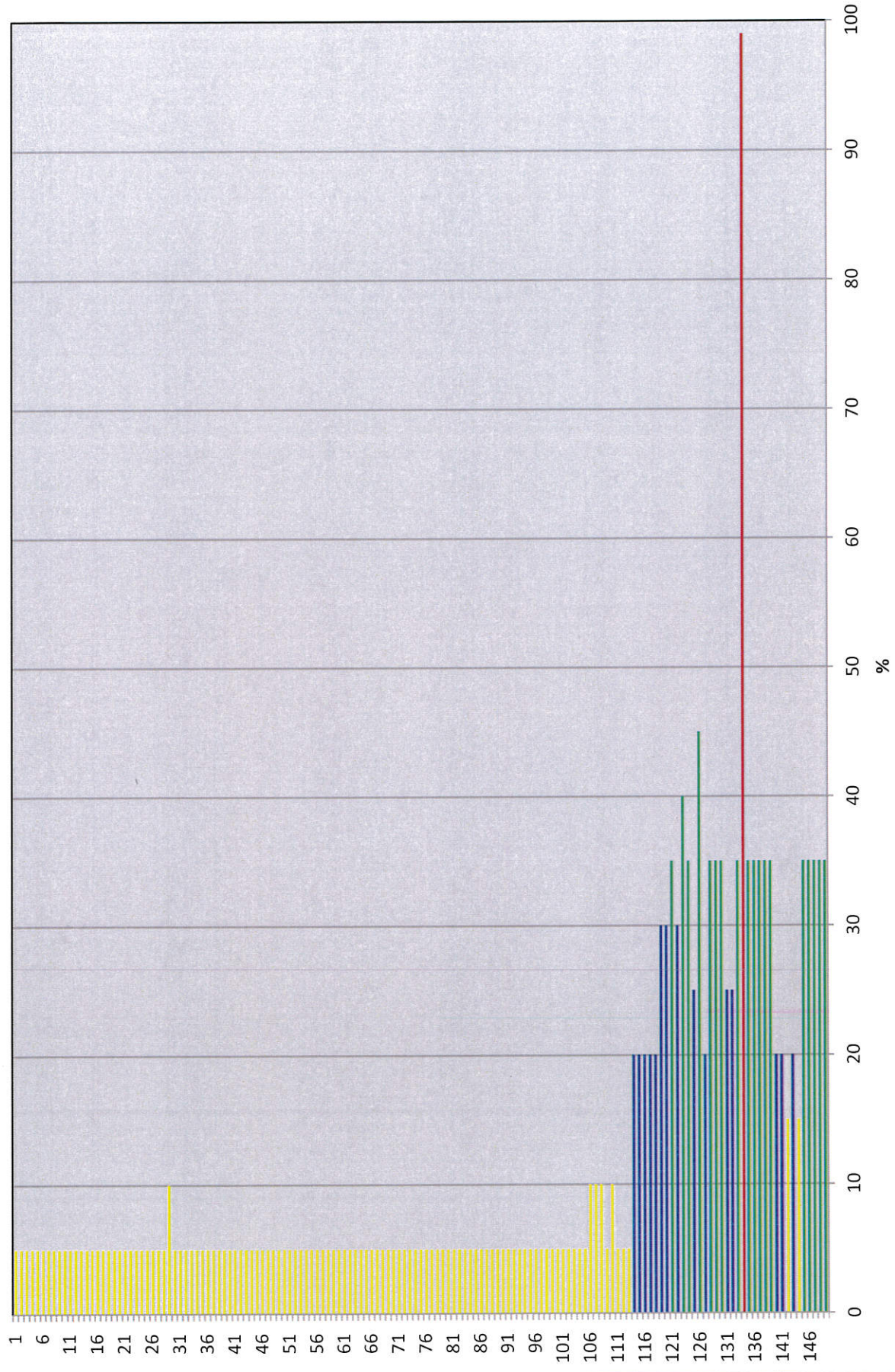


## Pitting 1 to 149





# Wall Loss 1 to 149





Operator: Strategic Oil &amp; Gas Ltd.

Reporting To:

Consultant: Shayne Stahl

Tel2:

Tel1: (780) 841-8106

|   |                                    |                             |
|---|------------------------------------|-----------------------------|
| UWI: 300L736010117150   | WELL: Strategic et al Cameron L-73 | DATE: 25-Jan-2019           |
| 24 Hr Summary: Completed rig up, killed well, laid down rods, installed BOP's. Unset anchor | END: 28-Jan-2019                   |                             |
| Formation: Sulphur Point  | Surf Loc: L-73 60-10N 117-15W      | Licence: 2033               |
| Objective: Abandon Sulphur Point Zone   | Abandonment Type: Downhole         | Serv Rig Start: 24-Jan-2019 |
| Operations at 6:00: POOH and inspect tbg.   | AFE #: 19ABCAM004                  | AFE Estimate: \$156,364.00  |
| Daily Cost: \$17,694  | Previous Cumulative Cost: \$35,080 | Cum Cost: \$52,774          |
| Ground: 770.80 m  | KB To TH: 3.46 m                   | Open Hole: mKB              |
| KB to Grd: 4.00 m   | Tubing: 73 mm                      | Bot at: 1427.78 m           |
| TD (MD): 1,450.80 m   | Casing: 139.7 mm                   | Set at: 1450.8 m            |
| PBTD: 1,427.80 m  | Liner: mm                          | Top at: m                   |
| BOP Drill:  | BOP Press Test: yes                | Function Test: yes          |
| SITP: 4075 kPa  | SICP: 4075 kPa                     | SCV: kPa                    |
|   | H <sub>2</sub> S                   | %                           |

Remarks:

| Time From | Time To | Hours | Code   | Comments  |
|-----------|---------|-------|--------|---|
| 07:00     | 07:30   | 0.5   | SAFE   | Conducted crew safety and operations meeting. Function tested air kills and crown saver. Swept lease for LEL's and H <sub>2</sub> S   |
| 07:30     | 10:00   | 2.5   | RIG    | Rigged up pump and tank, p-tank and flare stack. Accumulator lines.<br>Bubble tested scv for 15 mins, no bubbles.   |
|           |         |       |        | Conducted walk around rig inspection. Set up air packs and air hoses.   |
| 10:00     | 12:00   | 2     | KILL   | Tested pump lines, pump manifold and testers line to 1.4 and 14.0 MPA, held tests for 10 mins.<br>Bled off tbq gas head to 0, bled off csg gas head to 0. Total gas flared was 3.20 E <sup>3</sup> M <sup>3</sup> , over 30 mins, rate could not be determined as pressure dropped and flow declined. Pumped 5.0 m <sup>3</sup> 0.50% CRW-132 inhibited fresh water down tbq, could not get tbq test. Unseated BHP, pumped 3.0 m <sup>3</sup> down tbq. Well would not circulate. Pumped 12.0 m <sup>3</sup> inhibited water down csg.  |
| 12:00     | 14:30   | 2.5   | TRPROD | Closed ratigans and stripped off stuffing box, stripped on pre-tested rod BOPs.<br>POOH and laid down rods as per program, did not recover BHP. Threads were stripped on the pin.   |
| 14:30     | 18:00   | 3.5   | BOPS   | Conducted accumulator check, function tested blind rams, 73.0mm pipe rams and annular.<br>Stump tested blind rams, 73.0mm pipe rams and 2 safety valves to 1.4 and 21.0 MPA for 10 mins for each component. Tested annular to 1.4 and 7.0 MPA for 10 mins each.<br>Removed wellhead and installed landing pup c/w safety valve. Picked up on tbq and set low line slips, tbq was in 5,000 daN tension. Removed tbq hanger and installed 0.60m pup, installed tbq hanger and landed tbq in 6,000 daN compression.<br>Installed BOPs, tested ring gasket and 73.0mm pipe rams to 1.4 and 21.0 MPA for 10 mins each. |
| 18:00     | 19:00   | 1     | RIG    | Rigged up working floor and power tongs, tarped in BOP's. Unset anchor.   |
| Total: 12 |         |       |        |   |

Equipment on Location:

|                          |                       |   |        |                                       |                |                                    |                |                |                          |                  |        |                   |
|--------------------------|-----------------------|---|--------|---------------------------------------|----------------|------------------------------------|----------------|----------------|--------------------------|------------------|--------|-------------------|
| Reservoir Fluids Summary | Reset                 | <input type="checkbox"/> Gas:               | Daily: | 3.2 10 <sup>3</sup> m <sup>3</sup> /d | Cum:           | 3.2 10 <sup>3</sup> m <sup>3</sup> | Tubing volume: |                | m <sup>3</sup>           |                  |        |                   |
|                          | Cums                  | <input type="checkbox"/> Oil or Condensate: | Daily: | m <sup>3</sup>                        | Cum:           | 0 m <sup>3</sup>                   | Csg. ann vol:  |                | m <sup>3</sup>           |                  |        |                   |
|                          |                       | <input type="checkbox"/> Water:             | Daily: | m <sup>3</sup>                        | Cum:           | 0 m <sup>3</sup>                   | Open hole vol: |                | m <sup>3</sup>           |                  |        |                   |
|                          | Time Swabbed/Flowed:  |   | Daily: | 0.00 hrs                              | Cum:           | hrs                                | Total:         |                | 0 m <sup>3</sup>         |                  |        |                   |
| Load Fluids              | Reset                 | <input type="checkbox"/> OIL                | Used   | m <sup>3</sup>                        | Cum            | 0 m <sup>3</sup>                   | Rec            | m <sup>3</sup> | Cum                      | 0 m <sup>3</sup> | To Rec | 0 m <sup>3</sup>  |
|                          | Cums                  | <input type="checkbox"/> WATER              | Used   | 20 m <sup>3</sup>                     | Cum            | 20 m <sup>3</sup>                  | Rec            | m <sup>3</sup> | Cum                      | 0 m <sup>3</sup> | To Rec | 20 m <sup>3</sup> |
|                          |                       | <input type="checkbox"/> OTHER              | Used   | m <sup>3</sup>                        | Cum            | 0 m <sup>3</sup>                   | Rec            | m <sup>3</sup> | Cum                      | 0 m <sup>3</sup> | To Rec | 0 m <sup>3</sup>  |
| Hours                    | Service Rig Hours     |   | Daily  | 12.00 hrs                             | Cumulative     | 23.00 hrs                          | DownTime:      | hrs            | Cumulative DownTime: hrs |                  |        |                   |
|                          | Personnel on Location |   | Rig:   | 6                                     | Service:       | 3                                  | Company:       | 1              | Total Personnel: 10      |                  |        |                   |
|                          | Weather: Overcast     |   | Temp   | -18 °C                                | Lease: Good    |                                    |                |                | Roads: Good              |                  |        |                   |
| Manager:                 |                       |   |        |                                       | Programmed By: |                                    |                |                |                          |                  |        |                   |



## Daily Abandonment Report

**Operator: Strategic Oil & Gas Ltd.**

Reporting To:

Consultant: Shayne Stahl

Tel2:

Tel: (780) 841-8106

|   |                       |   |                               |   |               |                                  |                |                  |
|---|-----------------------|---|-------------------------------|---|---------------|----------------------------------|----------------|------------------|
| Operator: Strategic Oil & Gas Ltd.  |                       | Reporting To:                               |                               | Consentant: Strategic Oil & Gas Ltd.  |               | DATE: 24-Jan-2019                |                |                  |
| UWI: 300L736010117150   |                       | WELL: Strategic et al Cameron L-73          |                               |   |               | END: 28-Jan-2019                 |                |                  |
| 24 Hr Summary: Moved on, partially rigged up.                                   |                       |   |                               |   |               |                                  |                |                  |
| Formation: Sulphur Point  |                       |   | Surf Loc: L-73 60-10N 117-15W |   | Licence: 2033 |                                  | Day #: 1       |                  |
| Objective: Abandon Sulphur Point Zone   |                       | Abandonment Type: Downhole                  |                               | Serv Rig Start: 24-Jan-2019   |               | Serv Rig End: 27-Jan-2019        |                |                  |
| Operations at 6:00: Complete rig up, bubble test scv, kill well, lay down rods. |                       |   |                               | AFE #: 19ABCAM004   |               | AFE Estimate: \$156,364.00       |                |                  |
| Daily Cost: \$35,080  |                       | Previous Cumulative Cost:                   |                               | \$0   |               | Cum Cost: \$35,080               |                |                  |
| Ground:   | 770.80 m              | KB To TH:                                   | 3.46 m                        | Open Hole:  | mKB           | Date                             | Perf Formation |                  |
| KB to Grd:  | 4.00 m                | Tubing:                                     | 73 mm                         | Bot at:   | 1427.78 m     |                                  |                |                  |
| TD (MD):  | 1,450.80 m            | Casing:                                     | 139.7 mm                      | Set at:   | 1450.8 m      |                                  |                |                  |
| PBTD:   | 1,427.80 m            | Liner:                                      | mm                            | Top at:   | m             |                                  |                |                  |
| BOP Drill:  |                       | BOP Press Test:                             |                               | Function Test:  |               |                                  |                |                  |
| SITP:   | kPa                   | SICP:                                       | kPa                           | SCV:  | kPa           | H <sub>2</sub> S                 | %              |                  |
| Remarks:  |                       |   |                               |   |               |                                  |                |                  |
| Time From   | Time To               | Hours                                       | Code                          | Comments  |               |                                  |                |                  |
| 07:00   | 07:30                 | 0.5   | SAFE                          | Conducted crew safety and operations meeting. Reviewed ERP's. Function tested air kills.  |               |                                  |                |                  |
| 07:30   | 09:00                 | 1.5   | RIG                           | Laid down rig, wrapped up power cords.  |               |                                  |                |                  |
| 09:00   | 15:30                 | 6.5   | MOVE                          | Loaded and moved rig and equipment from 11-16-126-18 W5M to location. Spotted equipment to Strategic and OROGO practiced specs. |               |                                  |                |                  |
|   |                       |   |                               | Rig had to be pulled up 0 hill.   |               |                                  |                |                  |
|   |                       |   |                               | Rolled pump jack weights, unloaded BOPs and power tongs with picker.  |               |                                  |                |                  |
| 15:30   | 18:00                 | 2.5   | RIG                           | Rigged up rig, boiler lines and power cords.  |               |                                  |                |                  |
|   |                       |   |                               | Tarped in wellhead to warm over night.  |               |                                  |                |                  |
|   |                       |   |                               | Conducted walk around inspection with MVLWB personnel, everything was good.   |               |                                  |                |                  |
|   |                       |   |                               | SDFN.   |               |                                  |                |                  |
| Total: 11   |                       |   |                               |   |               |                                  |                |                  |
| Equipment on Location:  |                       |   |                               |   |               |                                  |                |                  |
| Reservoir Fluids Summary  | Reset                 | <input type="checkbox"/> Gas:               | Daily:                        | 10 <sup>3</sup> m <sup>3</sup> /d   | Cum:          | 0 10 <sup>3</sup> m <sup>3</sup> | Tubing volume: | m <sup>3</sup>   |
|   | Cums                  | <input type="checkbox"/> Oil or Condensate: | Daily:                        | m <sup>3</sup>  | Cum:          | m <sup>3</sup>                   | Csg. ann vol:  | m <sup>3</sup>   |
|   |                       | <input type="checkbox"/> Water:             | Daily:                        | m <sup>3</sup>  | Cum:          | m <sup>3</sup>                   | Open hole vol: | m <sup>3</sup>   |
|   |                       | Time Swabbed/Flowed:                        | Daily:                        | 0.00 hrs  | Cum:          | hrs                              | Total:         | 0 m <sup>3</sup> |
| Load Fluids   | Reset                 | <input type="checkbox"/> OIL                | Used                          | m <sup>3</sup>  | Cum           | m <sup>3</sup>                   | Rec            | m <sup>3</sup>   |
|   | Cums                  | <input type="checkbox"/> WATER              | Used                          | m <sup>3</sup>  | Cum           | 0 m <sup>3</sup>                 | Rec            | m <sup>3</sup>   |
|   |                       | <input type="checkbox"/> OTHER              | Used                          | m <sup>3</sup>  | Cum           | m <sup>3</sup>                   | Rec            | m <sup>3</sup>   |
| Hours   | Service Rig Hours     |   | Daily                         | 11.00 hrs   | Cumulative    | 11.00 hrs                        | DownTime:      | hrs              |
|   | Personnel on Location |   | Rig:                          | 6   | Service:      | 11                               | Company:       | 1                |
|   | Weather: Overcast     |   | Temp                          | -27 °C  | Lease:        | Good                             | Roads:         | Good             |
| Manager:  |                       |   |                               | Programmed By:  |               |                                  |                |                  |