

# COPRC Dodo Canyon D-04

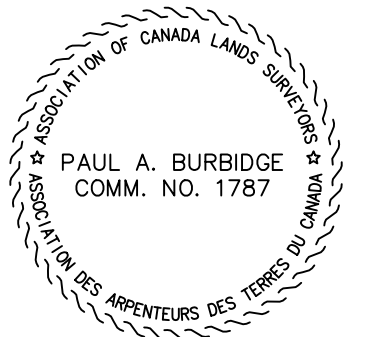
## APPENDICES

---

<b>Appendix 1</b>	<b>Legal Survey Plan (Preliminary)</b>
<b>Appendix 2</b>	<b>Daily Activity and Cost Summary</b>
<b>Appendix 3</b>	<b>Daily Reports</b>
<b>Appendix 4</b>	<b>Fluid Summary</b>
<b>Appendix 5</b>	<b>SCVF Test Summary</b>
<b>Appendix 6</b>	<b>Final Wellbore Schematic</b>
<b>Appendix 7</b>	<b>Cut and Cap Photos</b>

## **Appendix 1      Legal Survey Plan**

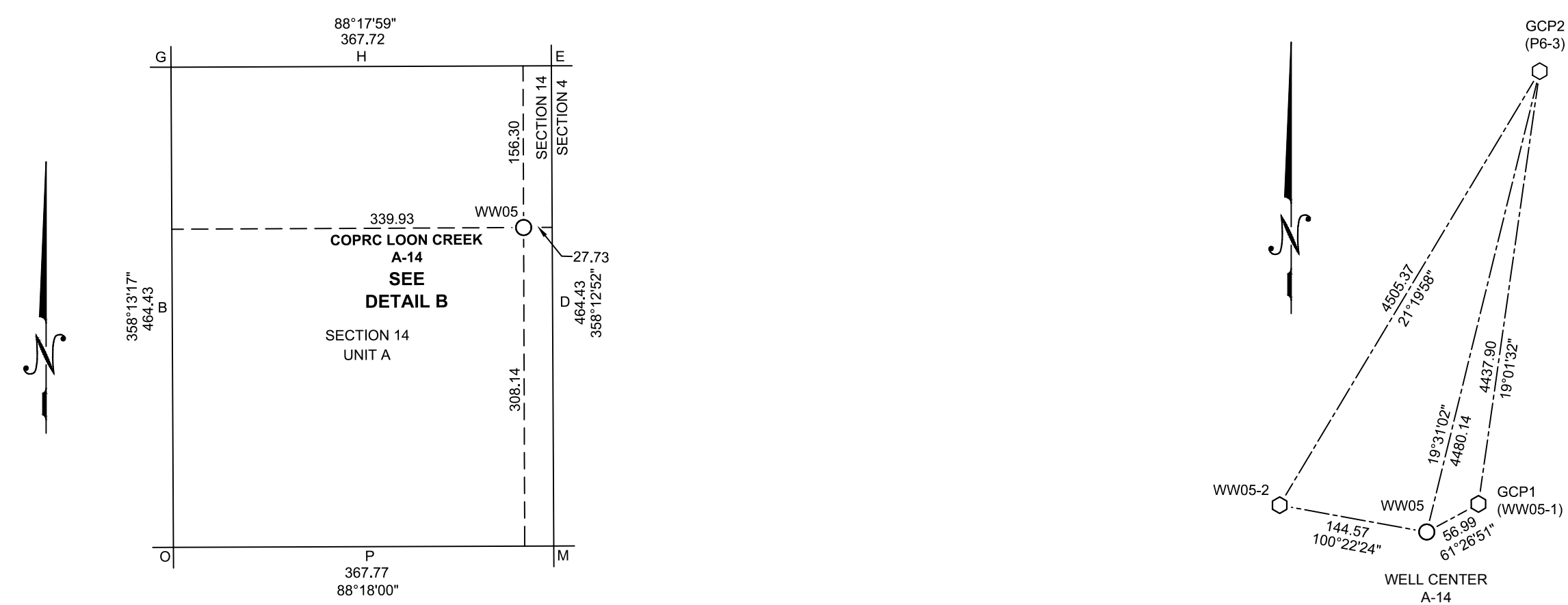
ORTHOMETRIC GROUND ELEVATION AT WELL CENTRE IS 298.89 METRES,  
AND WAS DERIVED USING THE HTv2.0 GEOID MODEL



---

PAUL A. BURBIDGE, Canada Lands Surveyor

DATE \_\_\_\_\_

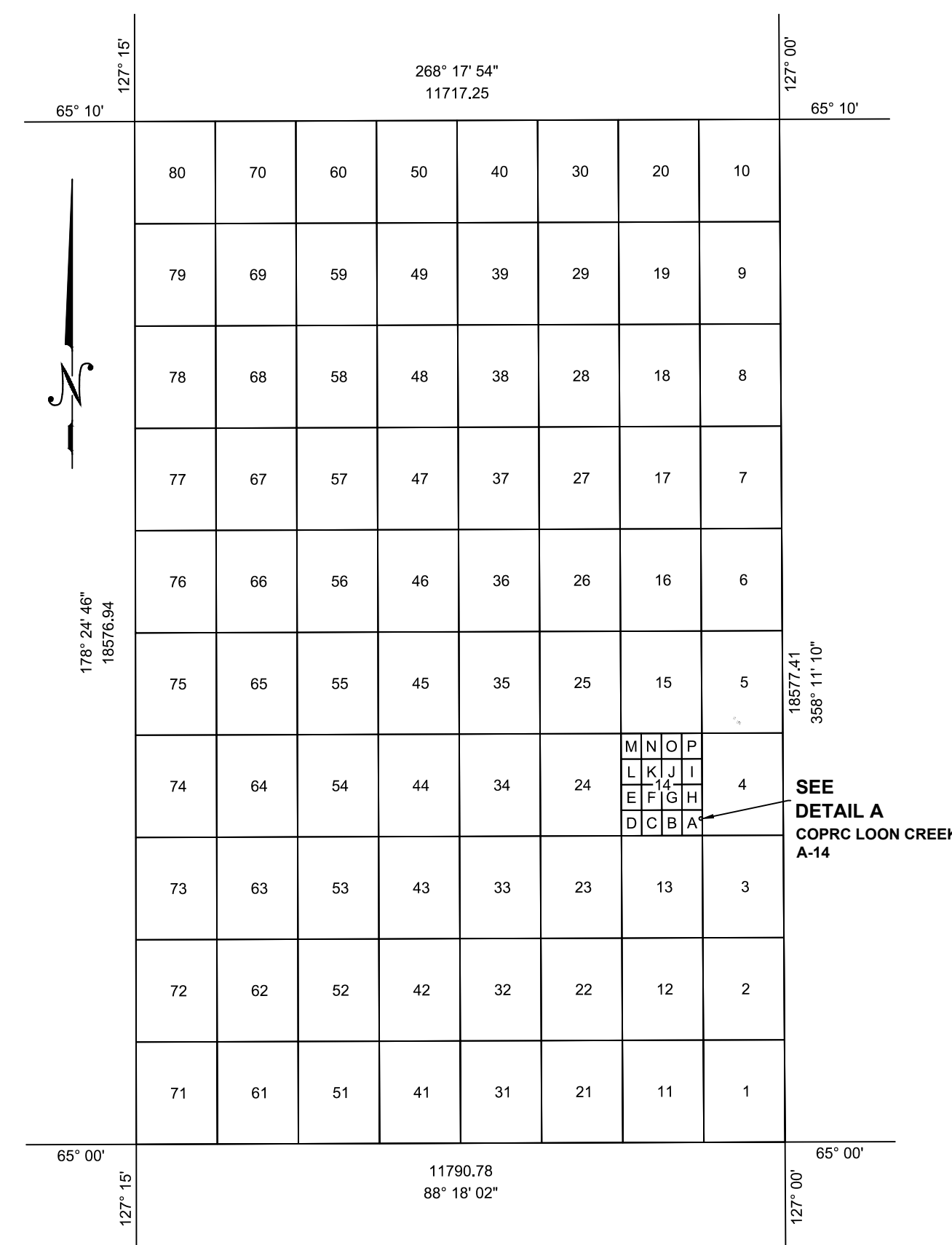


-BEARINGS ARE UTM NAD27, ZONE 9.  
-DISTANCES ARE REDUCED TO THE HORIZONTAL  
AT GENERAL GROUND LEVEL.

TABLE OF CO-ORDINATES								
		U.T.M. ZONE 9, C.M. 129			U.T.M. ZONE 9, C.M. 129		GEOGRAPHIC CO-ORDINATES	
STATION		NAD83-CSRS (Epoch 2010)			(NAD27)		(NAD27)	
	NORTHING	EASTING	ELEVATION	ACCURACY	NORTHING	EASTING	LATITUDE	LONGITUDE
GCP1 (WW05-1)	7215811.143	592580.065	300.097	0.02	7215614.671	592670.790		
GCP2 (P6-3)	7220005.01	594026.38	262.30		7219808.81	594117.04		
WW05-2	7215809.94	592387.87			7215613.46	592478.59		
GRID AREA								
N.W.					7227973.56	582004.79	65°10'	127°15'
N.E.					7228321.52	593716.9	65°10'	127°00'
S.E.					7209753.42	594304.93	65°00'	127°00'
S.W.					7209403.75	594519.4	65°00'	127°15'
A-14 N.W.					7215733.50	592640.00	65°03'15.12"	127°02'20.76"
A-14 N.E.					7215744.41	592640.00	65°03'15.12"	127°01'52.68"
A-14 S.E.					7215280.20	592658.07	65°03'00.00"	127°01'52.68"
A-14 S.W.					7215269.29	5926290.46	65°03'00.00"	127°02'20.76"
WELL CENTRE								
A-14	7215783.92	592530.02			7215587.44	592620.75	65°03'10.08"	127°01'54.48"

**Sahtu**  
GeoMatics Ltd.

302 Jarvis Street  
Whitehorse, Yukon Y1A 2H2  
(PH) 867-668-6940  
email: whitehorse@chalgeo.com



Bearings and distances are UTM NAD27, Zone 9.

**GRID AREA 65° 10', 127° 00'**  
SCALE 1 : 100 000

## **Appendix 2     Daily Activity and Cost Summary**



# Daily Activity and Cost Summary

## COPRC DODO CANYON D-04 (WW05-A)

<b>Job Category</b> WELL INTERVENTION	<b>Primary Job Type</b> WATER SOURCE WELL TEST	<b>Secondary Job Type</b>	<b>Actual Start Date</b> 2/5/2016 07:00	<b>End Date</b> 2/6/2016 18:00
<b>AFE / RFE / Maint.#</b> 10387556	<b>Total Job AFE Amount (Cost)</b> 56,500.00	<b>AFE+Supp Amt (Cost)</b> 56,500.00	<b>Total Field Estimate (Cost)</b> 24,320.00	<b>AFE-Field Estimate (Cost)</b> 32,180.00

### Objective

Water Well Testing Only

<b>Contractor</b>	<b>Rig Name/No</b>	<b>Rig Type</b>
-------------------	--------------------	-----------------

### DAILY ACTIVITY & COST SUMMARY

Report No.	Start Date	Daily Cost Total (Cost)	Cum Cost (Cost)	Last 24hr Sum
1	2/5/2016 11:30	6,345.00	6,345.00	Move equipment to location
2	2/6/2016 07:00	9,805.00	16,150.00	RIH with a 6.25 mm O.D. steam hose downhole. Ice encountered at 60 m below top of casing. Lower hose to full extent of reach approximately 90 m. Rig up and pulled pump and lines. Pump is 1.5 H.P. Grundfos submersible. 95 m of 12.5 mm polyethylene, discharge line removed from well. Well TD is 104 m with 178 mm casing.
3	2/28/2016 09:00	8,170.00	24,320.00	

# Daily Activity and Cost Summary

## COPRC DODO CANYON D-04 (WW05-A)

<b>Job Category</b> ABANDONMENT	<b>Primary Job Type</b> ABANDONMENT P&A	<b>Secondary Job Type</b>	<b>Actual Start Date</b> 2/18/2016 09:00	<b>End Date</b> 3/2/2016 15:30
<b>AFE / RFE / Maint.#</b> 10385946;10385945	<b>Total Job AFE Amount (Cost)</b> 368,950.00	<b>AFE+Supp Amt (Cost)</b> 368,950.00	<b>Total Field Estimate (Cost)</b> 146,229.15	<b>AFE-Field Estimate (Cost)</b> 222,720.85

### Objective

Abandon Cut and Cap

<b>Contractor</b> Nabors Production Services	<b>Rig Name/No</b> 414	<b>Rig Type</b>
---	---------------------------	-----------------

### DAILY ACTIVITY & COST SUMMARY

Report No.	Start Date	Daily Cost Total (Cost)	Cum Cost (Cost)	Last 24hr Sum
1	2/18/2016 12:45	13,218.00	13,218.00	Installed, torqued and pressure tested a Stream Flo Crown 7 1/16 2000 x 7" slip lock csg bowl on to the surface csg stub.
2	2/27/2016 14:00		13,218.00	MIRU Cascade steamer, RIH with plumb bob and 60 m tally tape to check for ice build up (No ice plugs). RIH with a 9.52 mm O.D. steam hose downhole. (Lowered hose to full extent of reach approximately 90 m) and checked for Ice plugs. (No ice plugs). RIH with camera and visually checked for ice build up on the csg.(No ice plugs).
3	2/28/2016 09:00	59,860.40	73,078.40	MIRU C&J Rig # 414 + Auxiliary equipment, Install BOPs, Haul in & Heat Water, Set up Racks + Walks & Unload 10 Jts of 60.3mm EUE TBG. Crew Change: MIRU E-Line, RIH 149mm Gauge Ring to 92 mKB, Pulled CCL Log to Surface, RIH & Set PBP ce @ 80.0 mKB, P Test PBP to 7,000 kPa, RIH & Space out 60.3mm EUE TBG, Land TBG Hanger with EOT @ 79 mKB, Rigged to Forward Circulate.
4	2/29/2016 06:00	60,954.57	134,032.97	Rolled Water Tank, Forward Circulated to Warm Wellbore, conduct cement job as per Calgary placing continuous cement plug from 79.80 up to 3.10m Ground Level / 5.95 mKB, pressure test cement plug to 7.0 mPa for 10min - good test, POOH + Rig out Service Rig and auxiliary equipment. Move Service Rig to O-06. Crew Change: Finished Rigging out Service Rig Equipment, Cool & Flood Boiler, Ready Equipment for Move.
5	3/1/2016 06:00	3,908.00	137,940.97	RDMO remaining equipment. MIRU Cascade steamer and Clean Harbors semi vac, Hydro vaced around the conductor barrel on the wellhead down 2" from ground level to cement.
6	3/2/2016 12:00	8,288.18	146,229.15	NuWave cut and capped well. See Cut & Cap pictures in Attachments.
7	3/10/2016 14:00		146,229.15	Performed visual inspection of Lease with Bill Pepper.

## **Appendix 3     Daily Reports**

# Daily Morning Report

## COPRC DODO CANYON D-04 (WW05-A)

Report #: 1  
Report Date: 2/5/2016  
Final Job Status:  
Final Report? Yes

Country CANADA	State/Province N.W.T.	Region / Division WCBU	District NEW VENTURES	Field Name Chinook	Field Code 0218
Surface Legal Location Chinook Ground Water Program		API / UWI 300/D-04 65-10 127-00/0		License No. CHINOOK H2O WATER S14L1-003	

<b>Job Information</b>					
Job Category WELL INTERVENTION	Primary Job Type WATER SOURCE WELL TEST	Secondary Job Type	Total Field Estimate (Cost) 24,319.00		

<b>Objective</b> Water Well Testing Only					
Actual Start Date 2/5/2016 07:00	End Date 2/6/2016 18:00	Abandon Date (C&C) 3/2/2016 15:30	Responsible Grp 1 coved	Responsible Grp 2 lborbel	Responsible Grp 3 Mike Flett
AFE / RFE / Maint.# 10387556	Total AFE Amount (Cost) 56,500.00	Total AFE + Supp Amount (Cost) 56,500.00	Total Field Estimate (Cost) 24,319.00	AFE-Field Estimate (Cost) 32,181.00	

<b>Daily Operations</b>					
Report Start Date 2/5/2016 11:30	Report End Date 2/5/2016 18:00	Daily Cost Total (Cost) 11,492.00	Cumulative Cost (Cost) 11,492.00	Personnel Regular Hours (hr) 32.50	
<b>Daily Contacts</b> WS Superintendent, Derrick Cove, 780-831-1314; Abandonment Engineer, Louis Borbely, 403-650-3939; WS Supervisor, Mike Flett, 780-933-4595; Crew Supervisor, Jeff Powers, 907-355-1769					Rig
Tubing Pressure (kPa)	Casing Pressure (kPa)	Weather Overcast	Temperature (°C) -27	Lease Condition lcy/Snow covered	

**Last 24hr Summary**  
Move equipment to location

**24hr Forecast**  
Thaw WW05-A and remove infrastructure.

Start Time	End Time	Dur (hr)	Op Code	Activity Code	Time P-T-X	Trbl Code	Operation
11:30	12:00	0.50	WELLPR	SFTY	P		Held PJHA #744981 with Hobbit crew members. Discussed daily operations and hazards.
12:00	18:00	6.00	WELLPR	MOB	P		Went to CPC office to search for missing recording components of downhole video system. Exchanged frost fighter heaters at Canol. Fueled up at Esso. Drove to WW02-A and loaded the flat deck with cattle guards, recovered well infrastructure and genset and moved to WW05-A. Set up for pumping well. Pumped for 5 hours at 8L/min for 5 hours. (Total discharge to surface 2400 litres. Discharge allowed per conditions of SLWB permit). MIRU steamer unit. Unspooled 195 m length of 31.75 mm diameter polyethylene discharge line from electric spool. Discharge line removed from WW02-A yesterday. Sample well WW05-A for laboratory analysis. Discuss reporting with Derrick Cove. SDFN.

<b>Report Fluids Summary</b>					
Fluid	To lease (m³)	From lease (m³)	To well (m³)	From well (m³)	Left to recover (m³)
FRESH WATER	0.46	0.00	0.46	0.00	0.46

<b>Daily Costs</b>		BU Desc	Vendor	Activity Code	Amount (Cost)
		Surface Completion Equipment Rental	CANOL OILFIELD SERVICES INC	Q300	660.00
		Surface Completion Equipment Rental	CANOL OILFIELD SERVICES INC	Q300	550.00
		Surface Completion Equipment Rental	CANOL OILFIELD SERVICES INC	Q300	100.00
		Surface Completion Equipment Rental	CANOL OILFIELD SERVICES INC	Q300	25.00
		Welltesting (Eqpmt, Srvc, PTA, Gov't Subs)	HOBBIT ENVIRONMENTAL	M220	8,522.00
		Wellsite Supervision & Engineering	MJ'S WELLSITE SUPERVISION LTD	T130	1,620.00
		Surface Completion Equipment Rental	RIGSAT COMMUNICATIONS INC	Q300	15.00

<b>Cumulative Job Flared Gas By Zone</b>		Zone	Volume Gas Total (E3m³)

<b>Perforations</b>					
Date	Zone	Top (mKB)	Btm (mKB)	Shot Dens (shots/m)	Current Status

# Daily Morning Report

## COPRC DODO CANYON D-04 (WW05-A)

Report #: 2  
Report Date: 2/6/2016  
Final Job Status:  
Final Report? Yes

Country CANADA	State/Province N.W.T.	Region / Division WCBU	District NEW VENTURES	Field Name Chinook	Field Code 0218
Surface Legal Location Chinook Ground Water Program		API / UWI 300/D-04 65-10 127-00/0		License No. CHINOOK H2O WATER S14L1-003	

<b>Job Information</b>					
Job Category WELL INTERVENTION	Primary Job Type WATER SOURCE WELL TEST	Secondary Job Type	Total Field Estimate (Cost) 24,319.00		

Objective Water Well Testing Only					
Actual Start Date 2/5/2016 07:00	End Date 2/6/2016 18:00	Abandon Date (C&C) 3/2/2016 15:30	Responsible Grp 1 coved	Responsible Grp 2 lborbel	Responsible Grp 3 Mike Flett
AFE / RFE / Maint.# 10387556	Total AFE Amount (Cost) 56,500.00	Total AFE + Supp Amount (Cost) 56,500.00	Total Field Estimate (Cost) 24,319.00	AFE-Field Estimate (Cost) 32,181.00	

<b>Daily Operations</b>					
Report Start Date 2/6/2016 07:00	Report End Date 2/6/2016 18:00	Daily Cost Total (Cost) 12,827.00	Cumulative Cost (Cost) 24,319.00	Personnel Regular Hours (hr) 55.00	
Daily Contacts WS Superintendent, Derrick Cove, 780-831-1314; Abandonment Engineer, Louis Borbely, 403-650-3939; WS Supervisor, Mike Flett, 780-933-4595; Crew Supervisor, Jeff Powers, 907-355-1769					Rig
Tubing Pressure (kPa)	Casing Pressure (kPa)	Weather Overcast	Temperature (°C) -22	Lease Condition lcy/Snow covered	

**Last 24hr Summary**  
RIH with a 6.25 mm O.D. steam hose downhole. Ice encountered at 60 m below top of casing. Lower hose to full extent of reach approximately 90 m. Rig up and pulled pump and lines. Pump is 1.5 H.P. Grundfos submersible. 95 m of 12.5 mm polyethylene, discharge line removed from well. Well TD is 104 m with 178 mm casing.

**24hr Forecast**  
Mobilize equipment to WW04-A, pump and sample WW04-A begin infrastructure removal.

Start Time	End Time	Dur (hr)	Op Code	Activity Code	Time P-T-X	Trbl Code	Operation
07:00	07:30	0.50	WELLPR	SFTY	P		Held PJHA #744981 with Hobbit crew, Discussed daily activity and hazards.
07:30	18:00	10.50	RPEQPT	ALFT	P		Locate storage containers for discharge water. Stop by CPC office to get missing components of downhole video recording equipment. Purchase jerry cans for diesel to fuel up equipment out at WW05-A. Drove to location, Fueled up truck and jerry cans. Run in hole w/6.25 mm O.D. steam hose downhole. Ice encountered at 60 m below top of casing. Lower hose to full extent of reach approximately 90 m. Made five wipes of inner casing with steam hose. Spool hose. Rig up to pull pump and lines. Pump is 1.5 H.P. Grundfos submersible. 95 m of 12.5 mm polyethylene, discharge line removed from well. Well TD is 104 m with 178 mm casing. Spool out discharge hose, electrical cable and aircraft cable to separate lines. Due to frozen static water level, depth to water will be measured after allowing for 24 hours for stabilization. February 9th - Shocked with 6L of the 12% hypochlorite solution. SDFN.

<b>Report Fluids Summary</b>					
Fluid	To lease (m³)	From lease (m³)	To well (m³)	From well (m³)	Left to recover (m³)
FRESH WATER	0.00	0.00	0.00	0.00	0.46

<b>Daily Costs</b>			
BU Desc	Vendor	Activity Code	Amount (Cost)
Surface Completion Equipment Rental	CANOL OILFIELD SERVICES INC	Q300	1,320.00
Surface Completion Equipment Rental	CANOL OILFIELD SERVICES INC	Q300	1,100.00
Surface Completion Equipment Rental	CANOL OILFIELD SERVICES INC	Q300	200.00
Surface Completion Equipment Rental	CANOL OILFIELD SERVICES INC	Q300	50.00
Welltesting (Eqpmt,Srvcs,PTA,Gov't Subs)	HOBBIT ENVIRONMENTAL	M220	8,522.00
Wellsite Supervision & Engineering	MJ'S WELLSITE SUPERVISION LTD	T130	1,620.00
Surface Completion Equipment Rental	RIGSAT COMMUNICATIONS INC	Q300	15.00

<b>Cumulative Job Flared Gas By Zone</b>	
Zone	Volume Gas Total (E3m³)

<b>Perforations</b>					
Date	Zone	Top (mKB)	Btm (mKB)	Shot Dens (shots/m)	Current Status

# Daily Morning Report

## COPRC DODO CANYON D-04 (WW05-A)

Report #: 1  
Report Date: 2/18/2016  
Final Job Status: ABANDONED  
Final Report? Yes

Country CANADA	State/Province N.W.T.	Region / Division WCBU	District NEW VENTURES	Field Name Chinook	Field Code 0218
Surface Legal Location Chinook Ground Water Program		API / UWI 300/D-04 65-10 127-00/0		License No. CHINOOK H2O WATER S14L1-003	

<b>Job Information</b>					
Job Category ABANDONMENT	Primary Job Type ABANDONMENT P&A	Secondary Job Type	Total Field Estimate (Cost) 143,869.97		

<b>Objective</b> Abandon Cut and Cap					
Actual Start Date 2/18/2016 09:00	End Date 3/2/2016 15:30	Abandon Date (C&C) 3/2/2016 15:30	Responsible Grp 1 coved	Responsible Grp 2 lborbel	Responsible Grp 3 Justin Minault
AFE / RFE / Maint.# 10385946	Total AFE Amount (Cost) 347,500.00	Total AFE + Supp Amount (Cost) 347,500.00	Total Field Estimate (Cost) 143,869.97	AFE-Field Estimate (Cost) 203,630.03	
AFE / RFE / Maint.# 10385945	Total AFE Amount (Cost) 21,450.00	Total AFE + Supp Amount (Cost) 21,450.00	Total Field Estimate (Cost)	AFE-Field Estimate (Cost) 21,450.00	

<b>Daily Operations</b>					
Report Start Date 2/18/2016 12:45	Report End Date 2/18/2016 15:00	Daily Cost Total (Cost) 13,218.00	Cumulative Cost (Cost) 13,218.00	Personnel Regular Hours (hr) 7.50	
<b>Daily Contacts</b> WS Superintendent, Derrick Cove, 780-831-1314; WS Supervisor, Justin Minault, 403-391-0714; WS Supervisor, Marty Dushanek, 403-358-8911; Abandonment Engineer, Louis Borbely, 403-650-3939					Rig
Tubing Pressure (kPa)	Casing Pressure (kPa)	Weather Clear	Temperature (°C) -23	Lease Condition lcy/snow covered	

**Last 24hr Summary**  
Installed, torqued and pressure tested a Stream Flo Crown 7 1/16 2000 x 7" slip lock csg bowl on to the surface csg stub.

**24hr Forecast**  
Ready to move on service rig.

Start Time	End Time	Dur (hr)	Op Code	Activity Code	Time P-T-X	Trbl Code	Operation
12:45	13:00	0.25	WELLPR	SFTY	P		Held a PJHA # 02182016-A with Stream Flo Wellhead tech, Canol Transport forklift operator. Discussed installing the Stream Flo Crown 7 1/16 2000 x 7" slip lock csg bowl with a Type SL1 slip lock bottom, pressure testing, heavy lifting, Cold weather, Reviewed transportation plan/medic location, lease conditions, muster area and the associated hazards. Reviewed the Site ERP and Injured Worker Transportation Plan with crew members. Safety tickets, orientations checked and valid.
13:00	15:00	2.00	WELLPR	WWSP	P		Cut, beveled and cleaned the 7" surface csg stub. Installed and torqued the Stream Flo Crown 7 1/16 2000 x 7" slip lock csg bowl with a Type SL1 slip lock bottom as per Stream Flow Installation procedure. Pressure tested seal assembly. Pressure tested. 500 psi (3447 kPa) low for 3 min, 2000 psi (13789 kPa) high for 10 min, test was good. Cleaned up all tools and equipment.

<b>Report Fluids Summary</b>					
Fluid	To lease (m³)	From lease (m³)	To well (m³)	From well (m³)	Left to recover (m³)

<b>Daily Costs</b>			
BU Desc	Vendor	Activity Code	Amount (Cost)
Build Road & Location	CANOL OILFIELD SERVICES INC	D210	606.00
Surface Equipment / Installation	STREAM FLO INDUSTRIES LTD	B110	1,585.00
Surface Equipment / Installation	STREAM FLO INDUSTRIES LTD	B110	11,027.00

<b>Cumulative Job Flared Gas By Zone</b>	
Zone	Volume Gas Total (E3m³)

<b>Perforations</b>					
Date	Zone	Top (mKB)	Btm (mKB)	Shot Dens (shots/m)	Current Status

# Daily Morning Report

## COPRC DODO CANYON D-04 (WW05-A)

Report #: 2  
Report Date: 2/27/2016  
Final Job Status: ABANDONED  
Final Report? Yes

Country CANADA	State/Province N.W.T.	Region / Division WCBU	District NEW VENTURES	Field Name Chinook	Field Code 0218
Surface Legal Location Chinook Ground Water Program		API / UWI 300/D-04 65-10 127-00/0		License No. CHINOOK H2O WATER S14L1-003	

<b>Job Information</b>					
Job Category ABANDONMENT	Primary Job Type ABANDONMENT P&A	Secondary Job Type	Total Field Estimate (Cost) 143,869.97		

<b>Objective</b> Abandon Cut and Cap					
Actual Start Date 2/18/2016 09:00	End Date 3/2/2016 15:30	Abandon Date (C&C) 3/2/2016 15:30	Responsible Grp 1 coved	Responsible Grp 2 lborbel	Responsible Grp 3 Justin Minault
AFE / RFE / Maint.# 10385946	Total AFE Amount (Cost) 347,500.00	Total AFE + Supp Amount (Cost) 347,500.00	Total Field Estimate (Cost) 143,869.97	AFE-Field Estimate (Cost) 203,630.03	
AFE / RFE / Maint.# 10385945	Total AFE Amount (Cost) 21,450.00	Total AFE + Supp Amount (Cost) 21,450.00	Total Field Estimate (Cost)	AFE-Field Estimate (Cost) 21,450.00	

<b>Daily Operations</b>					
Report Start Date 2/27/2016 14:00	Report End Date 2/27/2016 19:30	Daily Cost Total (Cost)	Cumulative Cost (Cost) 13,218.00	Personnel Regular Hours (hr) 17.00	

<b>Daily Contacts</b> WS Superintendent, Derrick Cove, 780-831-1314; WS Supervisor, Mike Flett, 780-933-4595; Abandonment Engineer, Louis Borbely, 403-650-3939					Rig
Tubing Pressure (kPa)	Casing Pressure (kPa)	Weather Clear	Temperature (°C) -14	Lease Condition Icy/snow covered	

**Last 24hr Summary**  
MIRU Cascade steamer, RIH with plumb bob and 60 m tally tape to check for ice build up (No ice plugs). RIH with a 9.52 mm O.D. steam hose downhole. (Lowered hose to full extent of reach approximately 90 m) and checked for Ice plugs. (No ice plugs). RIH with camera and visually checked for ice build up on the csg.(No ice plugs).

**24hr Forecast**  
Ready to move on Service rig.

Start Time	End Time	Dur (hr)	Op Code	Activity Code	Time P-T-X	Trbl Code	Operation
14:00	14:15	0.25	WELLPR	SFTY	P		Held a PJHA # 02272016 with Cascade steamer crew. Discussed spotting/rigging in the steamer unit, firing the boiler, RIH with the 9.52 mm steam hose and checking for ice plugs in the csg. heavy lifting. Cold weather operations. Reviewed transportation plan/medic location, lease conditions, muster area and the associated hazards. Reviewed the Site ERP and Injured Worker Transportation Plan with crew members. Safety tickets, orientations checked and valid.
14:15	18:00	3.75	WELLPR	WWSP	P		Spotted/rigged in the steamer unit. Fired the boiler. RIH with a plumb bob and tally tape down to 60 m (No ice plugs). POOH with plumb bob. Installed the roller guide on to the Csg Flange. RIH with the 9.52 mm O.D steam hose (Lowered hose to full extent of reach approximately 90 m). POOH to surface with the steam hose. Repeated 6 times during a 4 hr period. Removed the roller guide, rigged out the steamer unit.
18:00	19:30	1.50	RPEQPT	WWSP	P		Chris Tucker brought video equipment. Rigged in, RIH and video surveyed/recorded well to determine if inner casing is cleared of ice.(No ice plugs). Video survey indicates inner casing is ice free. Tagged fluid level at 57 m. RIH down to 83 m. POOH with the video camera. Rigged out the equipment. Put the hole cover back on the Csg flange. SDFN.

<b>Report Fluids Summary</b>					
Fluid	To lease (m³)	From lease (m³)	To well (m³)	From well (m³)	Left to recover (m³)
FRESH WATER	15.18	12.00			

<b>Daily Costs</b>			
BU Desc	Vendor	Activity Code	Amount (Cost)

<b>Cumulative Job Flared Gas By Zone</b>	
Zone	Volume Gas Total (E3m³)

<b>Perforations</b>					
Date	Zone	Top (mKB)	Btm (mKB)	Shot Dens (shots/m)	Current Status



# Daily Morning Report

## COPRC DODO CANYON D-04 (WW05-A)

Report #: 3  
Report Date: 2/28/2016  
Final Job Status: ABANDONED  
Final Report? Yes

Country CANADA	State/Province N.W.T.	Region / Division WCBU	District NEW VENTURES	Field Name Chinook	Field Code 0218
Surface Legal Location Chinook Ground Water Program		API / UWI 300/D-04 65-10 127-00/0		License No. CHINOOK H2O WATER S14L1-003	

Job Information			
Job Category	Primary Job Type	Secondary Job Type	Total Field Estimate (Cost)
ABANDONMENT	ABANDONMENT P&A		143,869.97

<b>Objective</b> Abandon Cut and Cap					
Actual Start Date 2/18/2016 09:00	End Date 3/2/2016 15:30	Abandon Date (C&C) 3/2/2016 15:30	Responsible Grp 1 coved	Responsible Grp 2 lborbel	Responsible Grp 3 Justin Minault
AFE / RFE / Maint.# 10385946	Total AFE Amount (Cost) 347,500.00	Total AFE + Supp Amount (Cost) 347,500.00	Total Field Estimate (Cost) 143,869.97	AFE-Field Estimate (Cost) 203,630.03	
AFE / RFE / Maint.# 10385945	Total AFE Amount (Cost) 21,450.00	Total AFE + Supp Amount (Cost) 21,450.00	Total Field Estimate (Cost)	AFE-Field Estimate (Cost) 21,450.00	

<b>Daily Operations</b>					
Report Start Date 2/28/2016 09:00	Report End Date 2/29/2016 06:00	Daily Cost Total (Cost) 59,860.40	Cumulative Cost (Cost) 73,078.40	Personnel Regular Hours (hr) 204.00	

<b>Daily Contacts</b> WS Superintendent, Derrick Cove, 780-831-1314; WS Supervisor, Justin Minault, 403-391-0714; WS Supervisor, Marty Dushanek, 403-358-8911; Abandonment Engineer, Louis Borbely, 403-650-3939					Rig Nabors Production Services, 414
Tubing Pressure (kPa)	Casing Pressure (kPa) 0	Weather Clear	Temperature (°C) -24	Lease Condition lcy/snow covered	

**Last 24hr Summary**  
MIRU C&J Rig # 414 + Auxiliary equipment, Install BOPs, Haul in & Heat Water, Set up Racks + Walks & Unload 10 Jts of 60.3mm EUE TBG.  
Crew Change: MIRU E-Line, RIH 149mm Gauge Ring to 92 mKB, Pulled CCL Log to Surface, RIH & Set PBP ce @ 80.0 mKB, P Test PBP to 7,000 kPa, RIH & Space out 60.3mm EUE TBG, Land TBG Hanger with EOT @ 79 mKB, Rigged to Forward Circulate.

**24hr Forecast**  
Perform Cement Job + Rig out.

Start Time	End Time	Dur (hr)	Op Code	Activity Code	Time P-T-X	Trbl Code	Operation
09:00	09:30	0.50	WELLPR	SFTY	P		Hold Pre-Spot + rig in safety meeting with all personnel, document and discuss all hazards associated with spotting and rigging in equipment, Working with steam and multiple services.
09:30	15:30	6.00	WELLPR	MOB	P		<ul style="list-style-type: none"> <li>- Conduct walk-around inspection, measure off location to ensure adequate spacing to spot equipment within regulations, No Spills or leaks identified on location.</li> <li>- Move on C&amp;J Service Rig #414, spot in position, lay out planks to accommodate support beam, place beam and rig in jacks and free-standing support equipment.</li> <li>- Conduct derrick inspection with Rig manager.</li> <li>- Stand, raise and secure mast.</li> <li>- Trucks started arriving with loads.</li> <li>- Unload and spot the following equipment: <ul style="list-style-type: none"> <li>- Septic tank</li> <li>- well site shack.</li> <li>- Gen-Set</li> <li>- Doghouse</li> <li>- 2x Boilers</li> <li>- Rig Tank + pump</li> <li>- Clean 400bbl for potable water</li> <li>- Catwalk and pipe racks</li> <li>- Medic Office Trailer.</li> <li>- 4x Light Towers</li> </ul> </li> </ul>
15:30	19:30	4.00	WELLPR	RURD	P		<ul style="list-style-type: none"> <li>- Run and rig in ground cables to all equipment as per CPC policy.</li> <li>- Rig in boiler and apply heat to bop's / wellhead and fluids.</li> <li>- Rig in pump and tank</li> <li>- Run accumulator lines, connect to bop's and conduct accumulator / function test.</li> <li>- Rig in Class III Bop's on well.</li> <li>- Rig in floor, hand rails, v-door and stairway.</li> <li>- Unload 10 jts of 60.3mm J-55 tbg on catwalk. 19:30 Hrs: CREW CHANGE.</li> </ul>

# Daily Morning Report

## COPRC DODO CANYON D-04 (WW05-A)

Report #: 3  
Report Date: 2/28/2016  
Final Job Status: ABANDONED  
Final Report? Yes

Start Time	End Time	Dur (hr)	Op Code	Activity Code	Time P-T-X	Trbl Code	Operation
19:30	20:00	0.50	RPEQPT	SFTY	P		Held PJHA Meeting with All Hands. (11 Total) Discussed Days Objectives, Procedures & Potential Hazards. Discussed Double Checking Service Rig & Equipment. Check Ground Cables, Line Pipe Slings, etc, MIRU E-Line, RIH Gauge Ring, RIH & Set PBP, Pre-Heat Pump Line, P Test BP to 7,000 kPa, RO&R E-Line, RIH TBG, Tag PBP, Space out TBG + Land TBG Hanger with EOT 1 meter above BP, Install Lag Screws, Heat Fresh Water = 28° C Max Temp + Forward Circulate @ 0.10 m³/min to Warm Wellbore. Discussed LSR's # 1, # 3, # 4 + # 8. Discussed Hazards: Footing - Traction Footwear + Slow it Down, Boiler/Steam Lines, Wind Chill - Very Cold - Don't Overdo it, Hammering - Stand Clear, Heavy Lifting - 2 Guys or Winchline, Overhead Equipment - Tag Line + Stand Clear, Good Communication, Pressure Testing - Stand Clear, Manage Your Red Zones + Safe Drive Home - Watch for Snow Drifts from the Blowing Snow. <> MUSTER AREA = LEASE ENTRANCE. <> >> Discussed Emergency Numbers, Transportation Plan, Paramedic + MTV. <<
20:00	20:30	0.50	RPEQPT	RURD	P		Performed Walk Around Equipment Inspection with Rig Crew. Checked Ground Cables, Line Pipe Slings, Water Temp, etc + Eliminated Trip Hazards.
20:30	22:00	1.50	RPEQPT	ELOG	P		MIRU Schlumberger E-Line Unit. Installed 178mm x R46 Flange above Class III BOP Stack. Callipered BP & Gauge Ring. Made up 148.9mm Gauge Ring/Junkbasket. Pressure Tested Lubricator 1,400 + 14,000 kPa. Solid P Test. RIH with Gauge Ring to 92.0 mKB. (Tagged Fluid Level @ 60 meters) Tagged Screen @ 92 mKB. Pull CCL Log from 92 mKB to Surface. > Correlated Log on Depth to Downhole CSG Tools from DHD. < <> Prior to Arming Bridge Plug; Held Safety Meeting with All Hands. <> Made up & RIH with 178mm x 70K Permanent Bridge Plug. Correlated on Depth to Previously Pulled CCL Log. Set PBP ce @ 80.0 mKB. (Top of PBP @ 79.8 mKB) POH + Laid down Running Gear.
22:00	22:30	0.50	RPEQPT	DHEQ	P		Filled CSG with 1.20 m³ of Potable Fresh Water. Pressure Tested PBP to 7,000 kPa. Pressure Test Held 100% for 10 mins. <> Rigged out & Released Schlumberger E-Line.
22:30	22:45	0.25	RPEQPT	TRIP	P		RIH with 60.3mm EUE TBG. Tagged Top of PBP @ 79.8 mKB. Spaced out & Landed TBG Hanger with EOT @ 79.0 mKB. (EOT was Landed 0.80 meters above PBP) Installed TBG Hanger Lag Screws.  > TBG was RIH as Follows: < - 60.3mm J-55 EUE TBG Collar. - 8 Jts x 60.3mm J-55 EUE TBG. (No Pup Jts) - 179mm x 60.3mm TBG Hanger.
22:45	02:00	3.25	CEMENT	WAIT	P		Drained Pump Line. Rigged in Pump Lines to Forward Circulate.
02:00	06:00	4.00	CEMENT	WAIT	P		Circulated (Rolled) Clean Water in 63 m³ Tank + Monitored Water Temperature.

### Report Fluids Summary

Fluid	To lease (m³)	From lease (m³)	To well (m³)	From well (m³)	Left to recover (m³)
FRESH WATER	11.50	0.00	1.20	0.07	1.13

### Daily Costs

BU Desc	Vendor	Activity Code	Amount (Cost)
Service Rig	C&J ENERGY PRODUCTION SERVICES CANADA LTD	E120	22,972.00
Trucking/Hauling/ Hot Shot Services	CANOL OILFIELD SERVICES INC	P100	2,350.00
Trucking/Hauling/ Hot Shot Services	CANOL OILFIELD SERVICES INC	P100	2,200.00
Trucking/Hauling/ Hot Shot Services	CANOL OILFIELD SERVICES INC	P100	3,555.00
Trucking/Hauling/ Hot Shot Services	CANOL OILFIELD SERVICES INC	P100	2,900.00
Trucking/Hauling/ Hot Shot Services	CANOL OILFIELD SERVICES INC	P100	516.00
Trucking/Hauling/ Hot Shot Services	CANOL OILFIELD SERVICES INC	P100	1,651.00
Trucking/Hauling/ Hot Shot Services	CANOL OILFIELD SERVICES INC	P100	1,900.00
Trucking/Hauling/ Hot Shot Services	CANOL OILFIELD SERVICES INC	P100	1,800.00
Surface Completion Equipment Rental	CENTRAL MACKENZIE ENVIRONMENTAL LTD	Q300	40.00
Surface Completion Equipment Rental	CENTRAL MACKENZIE ENVIRONMENTAL LTD	Q300	60.00
Wellsite Supervision & Engineering	FOCUS WELLSITE SUPERVISION LTD	T130	1,620.00
Surface Completion Equipment Rental	HRN CONTRACTING LTD	Q300	35.00
Trucking/Hauling/ Hot Shot Services	MACKAY EXPEDITING & LOGISTICS	P100	787.50
Wellsite Supervision & Engineering	MINAULT ENERGY SERVICES LTD	T130	1,620.00
Surface Completion Equipment Rental	PBN ENERGY SERVICES LTD	Q300	1,055.00

# Daily Morning Report

## COPRC DODO CANYON D-04 (WW05-A)

Report #: 3  
 Report Date: 2/28/2016  
 Final Job Status: ABANDONED  
 Final Report? Yes

Daily Costs			
BU Desc	Vendor	Activity Code	Amount (Cost)
Surface Completion Equipment Rental	PBN ENERGY SERVICES LTD	Q300	2,507.40
Surface Completion Equipment Rental	PBN ENERGY SERVICES LTD	Q300	1,305.00
Completion Fluids & Other Chem	PBN ENERGY SERVICES LTD	G300	1,224.50
Surface Completion Equipment Rental	PBN ENERGY SERVICES LTD	Q300	125.00
Surface Completion Equipment Rental	PBN ENERGY SERVICES LTD	Q300	325.00
Surface Completion Equipment Rental	PBN ENERGY SERVICES LTD	Q300	185.00
Surface Completion Equipment Rental	PBN ENERGY SERVICES LTD	Q300	185.00
Surface Completion Equipment Rental	PBN ENERGY SERVICES LTD	Q300	185.00
Surface Completion Equipment Rental	PBN ENERGY SERVICES LTD	Q300	185.00
Surface Completion Equipment Rental	PBN ENERGY SERVICES LTD	Q300	185.00
Surface Completion Equipment Rental	PBN ENERGY SERVICES LTD	Q300	75.00
Surface Completion Equipment Rental	PBN ENERGY SERVICES LTD	Q300	75.00
Surface Completion Equipment Rental	RIGSAT COMMUNICATIONS INC	Q300	15.00
Surface Completion Equipment Rental	RIGSAT COMMUNICATIONS INC	Q300	15.00
Electric Line Servs on Drilling Ops.	SCHLUMBERGER CANADA LIMITED	K100	6,307.00
Surface Completion Equipment Rental	TRUMPETER CAMP COMPANY PARTNERSHIP LTD	Q300	350.00
Surface Completion Equipment Rental	TRUMPETER CAMP COMPANY PARTNERSHIP LTD	Q300	450.00
Surface Completion Equipment Rental	TRUMPETER CAMP COMPANY PARTNERSHIP LTD	Q300	50.00
Surface Completion Equipment Rental	TRUMPETER CAMP COMPANY PARTNERSHIP LTD	Q300	1,050.00

### Cumulative Job Flared Gas By Zone

Zone	Volume Gas Total (E3m³)
------	-------------------------

### Perforations

Date	Zone	Top (mKB)	Btm (mKB)	Shot Dens (shots/m)	Current Status
------	------	-----------	-----------	---------------------	----------------

# Daily Morning Report

## COPRC DODO CANYON D-04 (WW05-A)

Report #: 4  
Report Date: 2/29/2016  
Final Job Status: ABANDONED  
Final Report? Yes

Country CANADA	State/Province N.W.T.	Region / Division WCBU	District NEW VENTURES	Field Name Chinook	Field Code 0218
Surface Legal Location Chinook Ground Water Program		API / UWI 300/D-04 65-10 127-00/0		License No. CHINOOK H2O WATER S14L1-003	

Job Information			
Job Category	Primary Job Type	Secondary Job Type	Total Field Estimate (Cost)
ABANDONMENT	ABANDONMENT P&A		143,869.97

<b>Objective</b> Abandon Cut and Cap					
Actual Start Date 2/18/2016 09:00	End Date 3/2/2016 15:30	Abandon Date (C&C) 3/2/2016 15:30	Responsible Grp 1 coved	Responsible Grp 2 lborbel	Responsible Grp 3 Justin Minault
AFE / RFE / Maint.# 10385946	Total AFE Amount (Cost) 347,500.00	Total AFE + Supp Amount (Cost) 347,500.00	Total Field Estimate (Cost) 143,869.97	AFE-Field Estimate (Cost) 203,630.03	
AFE / RFE / Maint.# 10385945	Total AFE Amount (Cost) 21,450.00	Total AFE + Supp Amount (Cost) 21,450.00	Total Field Estimate (Cost)	AFE-Field Estimate (Cost) 21,450.00	

<b>Daily Operations</b>					
Report Start Date 2/29/2016 06:00	Report End Date 3/1/2016 06:00	Daily Cost Total (Cost) 60,954.57	Cumulative Cost (Cost) 134,032.97	Personnel Regular Hours (hr) 216.00	

<b>Daily Contacts</b> WS Superintendent, Derrick Cove, 780-831-1314; WS Supervisor, Justin Minault, 403-391-0714; WS Supervisor, Marty Dushanek, 403-358-8911; Abandonment Engineer, Louis Borbely, 403-650-3939					Rig Nabors Production Services, 414
Tubing Pressure (kPa)	Casing Pressure (kPa) 0	Weather Partly Cloudy	Temperature (°C) -30	Lease Condition Icy/snow covered	

**Last 24hr Summary**  
Rolled Water Tank, Forward Circulated to Warm Wellbore, conduct cement job as per Calgary placing continuous cement plug from 79.80 up to 3.10m Ground Level / 5.95 mKB, pressure test cement plug to 7.0 mPa for 10min - good test, POOH + Rig out Service Rig and auxiliary equipment.  
Move Service Rig to O-06. Crew Change: Finished Rigging out Service Rig Equipment, Cool & Flood Boiler, Ready Equipment for Move.

**24hr Forecast**  
Move Service Rig Equipment.

Start Time	End Time	Dur (hr)	Op Code	Activity Code	Time P-T-X	Trbl Code	Operation
06:00	07:30	1.50	CEMENT	CIRC	P		Continued to Circulate Clean Water Tank + Monitor Water Temperature. 06:45 Hrs: Began to Forward Circulate Well over to Warm Fresh Water. Forward Circulated @ 0.10 m³/min with 28° C Fresh Water. 07:30 Hrs: CREW CHANGE.
07:30	08:00	0.50	CEMENT	SFTY	P		Hold Pre-job safety meeting with all day personnel, document and discuss hazards associated with spotting and rigging in cementing + auxiliary equipment, circulating well-bore with warm water, cold weather, icy conditions and focused on the need for everyone to keep their minds on task. Review PJHA, JSA's, IWTP and ERP. Check all personnel tickets and CPC orientation cards - all valid.
08:00	09:30	1.50	CEMENT	CIRC	P		- Continue to forward circulate @ 100lpm for 10.0m³ to heat up wellbore. - Spot and rig in cementers - Load tank truck with 10m³ - 25°C potable fresh water for cement job. - Circulate warm water through cement pumper to ensure no frozen lines or valves.  - Cement top down 0.50m in conductor, top up with half a pail of fresh water, conduct bubble/soap test for 10min with environmentally friendly, biodegradable phosphate free soap = no flow.
09:30	10:00	0.50	CEMENT	SFTY	P		Hold tailgate meeting with all personnel, document and discuss all hazards associated with circulating wellbore with cement to vac truck, pulling out of the hole with tbg, landing tbg hanger and circulating top of 3.5m of wellbore clean., Review PJHA, JSA's and MSDS for cement and additives.

# Daily Morning Report

## COPRC DODO CANYON D-04 (WW05-A)

Report #: 4  
Report Date: 2/29/2016  
Final Job Status: ABANDONED  
Final Report? Yes

Start Time	End Time	Dur (hr)	Op Code	Activity Code	Time P-T-X	Trbl Code	Operation
10:00	12:30	2.50	CEMENT	CMNT	P		<ul style="list-style-type: none"> <li>- With 12m<sup>3</sup> fresh water circulated Pump Temp = 25°C / Return Temp = 18°C Shut down pump, rig out pump line and rig in Cementers treating line.</li> <li>- Break circulation and push 200 liters to rig tank, shut in tbg valve and pressure test treating line to 1.4 + 14.0 mPa.</li> <li>- Mix up Arctic Set cement to 1880 kg/m<sup>3</sup> and begin circulating well bore over to cement @ 200 - 300 lpm - 300 kPa average treating pressure. With 1.50m<sup>3</sup> circulated cement to surface, pump 200 liters excess to ensure good cement, shut down pumper. Note: cement returned to vac truck.</li> <li>- Rig out treating line, tbg on vac - pour 20 liters of fresh water down tbg and 20 liters down casing to assist in flushing cement from tbg.</li> <li>- Back out tbg hanger lock down screws, POOH with 60.3mm tbg - no over-pull noted, cement drained from tbg and minimal residue on exterior of tbg remained, Rig in mobile steamer and flush out internals of bop's, cycle ram elements to ensure rams and cavities free of cement.</li> <li>- Pick up tbg hanger c/w 2.48m + 1.24m 60.3mm pup jts, land and lag up tbg hanger.</li> <li>- Rig in Cement pumper to tbg.</li> <li>- Forward circulate 1.0m<sup>3</sup> fresh water to leave cement top @ 3.10m from Ground Level / 5.95 mKB, Pressure test cement with fresh water to 7.0 mPa for 10min with no leak off. Rig in vac truck to tbg, suck water level down to cement top to ensure all water removed from wellbore.</li> <li>- Rig out treating line, un lag tbg hanger, pull and lay out tbg hanger c/w pup jts.</li> <li>- Secure well, clean up and rig out all cementing equipment.</li> <li>- Transport Dirty return water to 400bbl in containment on P-20 location (19m<sup>3</sup>), transport and blow off returned cement into Cement bin on E-76.</li> </ul>
12:30	13:00	0.50	RPCOMP	SFTY	P		Hold tailgate meeting with all personnel regarding rigging out service rig and auxiliary equipment. Review PJHA + JSA's.
13:00	19:30	6.50	RPCOMP	DMOB	P		<ul style="list-style-type: none"> <li>- Drain and winterize pump.</li> <li>- Bank Boilers, rig out Roughneck heaters - boilers banked overnight, will be flooded in am.</li> <li>- Conduct Derrick inspection with Rig Manager.</li> <li>- Lower and lay over mast, rig out service rig and prepare for transport.</li> <li>- Remove Bop's and secure on stump test stand</li> <li>- Open up Bop gates and remove ram blocks, clean out cement debris, inspect rubbers and ram cavities - no damage, grease and re-install.</li> <li>- Load up all auxiliary equipment and prepare for transport.</li> <li>- Measure cement top = 3.10m from Ground Level / 5.95 mKB.</li> <li>- Transport Service rig, beam and planking to O-06 location. CREW CHANGE.</li> </ul>
19:30	20:00	0.50	RPCOMP	SFTY	P		<p>Held PJHA Meeting with All Hands. (10 Total)</p> <p>Discussed Days Objectives, Procedures &amp; Potential Hazards.</p> <p>Discussed Rigging out Remaining Service Rig Equipment,</p> <p>Cool down &amp; Flood Boilers, Have All Equipment Ready to Move in AM +</p> <p>Travel to O-06 &amp; Rig in Service Rig. (Raise Rig Floor with Picker)</p> <p>Discussed LSR's # 1, # 3, # 4 + # 8.</p> <p>Discussed Hazards: Footing - Traction Footwear + Slow it Down,</p> <p>Wind Chill - Don't Overdo it, Hammering - Watch Swing Path - Stand Clear,</p> <p>Heavy Lifting - 2 Guys, Overhead Equipment - Tag Line + Stand Clear,</p> <p>Good Communication, Safe Drive Home - Road Radio.</p> <p>&lt;&gt; MUSTER AREA = LEASE ENTRANCE. &lt;&gt;</p> <p>&gt;&gt; Discussed Emergency Numbers, Transportation Plan, Paramedic + MTV. &lt;&lt;</p>
20:00	22:00	2.00	RPCOMP	DMOB	P		Rig Crew Rigged out All Remaining Service Rig Equipment. (Boiler & Accumulator Lines + Ground Cables, Tightened BOPs to Stump)
22:00	01:00	3.00	WELLPR	WAIT	P		Rig Crew Traveled to O-06 and Rigged in Service Rig.
01:00	06:00	5.00	RPCOMP	DMOB	P		Rig Crew Cleaned up Location. Cooled down Boilers. Made All Equipment Ready for Rig Move in AM.

### Report Fluids Summary

Fluid	To lease (m <sup>3</sup> )	From lease (m <sup>3</sup> )	To well (m <sup>3</sup> )	From well (m <sup>3</sup> )	Left to recover (m <sup>3</sup> )
FRESH WATER	0.00	6.10			1.13

### Daily Costs

BU Desc	Vendor	Activity Code	Amount (Cost)
Service Rig	C&J ENERGY PRODUCTION SERVICES CANADA LTD	E120	22,972.00
Trucking/Hauling/ Hot Shot Services	CANOL OILFIELD SERVICES INC	P100	688.00
Trucking/Hauling/ Hot Shot Services	CANOL OILFIELD SERVICES INC	P100	3,930.00
Surface Completion Equipment Rental	CENTRAL MACKENZIE ENVIRONMENTAL LTD	Q300	40.00
Surface Completion Equipment Rental	CENTRAL MACKENZIE ENVIRONMENTAL LTD	Q300	60.00
Wellsite Supervision & Engineering	FOCUS WELLSITE SUPERVISION LTD	T130	1,620.00
Surface Completion Equipment Rental	HRN CONTRACTING LTD	Q300	35.00
Completion Fluids & Other Chem	HRN CONTRACTING LTD	G300	1,670.00

# Daily Morning Report

## COPRC DODO CANYON D-04 (WW05-A)

Report #: 4  
Report Date: 2/29/2016  
Final Job Status: ABANDONED  
Final Report? Yes

Daily Costs			
BU Desc	Vendor	Activity Code	Amount (Cost)
Trucking/Hauling/ Hot Shot Services	MACKAY EXPEDITING & LOGISTICS	P100	787.50
Wellsite Supervision & Engineering	MINAULT ENERGY SERVICES LTD	T130	1,620.00
Surface Completion Equipment Rental	PBN ENERGY SERVICES LTD	Q300	1,405.00
Surface Completion Equipment Rental	PBN ENERGY SERVICES LTD	Q300	1,940.00
Surface Completion Equipment Rental	PBN ENERGY SERVICES LTD	Q300	1,305.00
Completion Fluids & Other Chem	PBN ENERGY SERVICES LTD	G300	1,224.50
Surface Completion Equipment Rental	PBN ENERGY SERVICES LTD	Q300	125.00
Surface Completion Equipment Rental	PBN ENERGY SERVICES LTD	Q300	325.00
Surface Completion Equipment Rental	PBN ENERGY SERVICES LTD	Q300	185.00
Surface Completion Equipment Rental	PBN ENERGY SERVICES LTD	Q300	185.00
Surface Completion Equipment Rental	PBN ENERGY SERVICES LTD	Q300	185.00
Surface Completion Equipment Rental	PBN ENERGY SERVICES LTD	Q300	185.00
Surface Completion Equipment Rental	PBN ENERGY SERVICES LTD	Q300	75.00
Surface Completion Equipment Rental	PBN ENERGY SERVICES LTD	Q300	75.00
Surface Completion Equipment Rental	RIGSAT COMMUNICATIONS INC	Q300	15.00
Surface Completion Equipment Rental	RIGSAT COMMUNICATIONS INC	Q300	15.00
Cementing Services & Materials	SCHLUMBERGER CANADA LIMITED	J200	19,252.57
Surface Completion Equipment Rental	TRUMPETER CAMP COMPANY PARTNERSHIP LTD	Q300	350.00
Surface Completion Equipment Rental	TRUMPETER CAMP COMPANY PARTNERSHIP LTD	Q300	450.00
Surface Completion Equipment Rental	TRUMPETER CAMP COMPANY PARTNERSHIP LTD	Q300	50.00

### Cumulative Job Flared Gas By Zone

Zone	Volume Gas Total (E3m³)
------	-------------------------

### Perforations

Date	Zone	Top (mKB)	Btm (mKB)	Shot Dens (shots/m)	Current Status
------	------	-----------	-----------	---------------------	----------------



# Daily Morning Report

## COPRC DODO CANYON D-04 (WW05-A)

Report #: 5  
Report Date: 3/1/2016  
Final Job Status: ABANDONED  
Final Report? Yes

Country CANADA	State/Province N.W.T.	Region / Division WCBU	District NEW VENTURES	Field Name Chinook	Field Code 0218
Surface Legal Location Chinook Ground Water Program		API / UWI 300/D-04 65-10 127-00/0		License No. CHINOOK H2O WATER S14L1-003	
<b>Job Information</b>					
Job Category ABANDONMENT		Primary Job Type ABANDONMENT P&A		Secondary Job Type Total Field Estimate (Cost) 143,869.97	
Objective Abandon Cut and Cap					
Actual Start Date 2/18/2016 09:00		End Date 3/2/2016 15:30		Abandon Date (C&C) 3/2/2016 15:30	
Responsible Grp 1 coved		Responsible Grp 2 lborbel		Responsible Grp 3 Justin Minault	
AFE / RFE / Maint.# 10385946		Total AFE Amount (Cost) 347,500.00		Total AFE + Supp Amount (Cost) 347,500.00	
				Total Field Estimate (Cost) 143,869.97	
				AFE-Field Estimate (Cost) 203,630.03	
AFE / RFE / Maint.# 10385945		Total AFE Amount (Cost) 21,450.00		Total AFE + Supp Amount (Cost) 21,450.00	
				Total Field Estimate (Cost) 21,450.00	
				AFE-Field Estimate (Cost) 21,450.00	
<b>Daily Operations</b>					
Report Start Date 3/1/2016 06:00		Report End Date 3/1/2016 10:00		Daily Cost Total (Cost) 3,908.00	
				Cumulative Cost (Cost) 137,940.97	
				Personnel Regular Hours (hr) 232.00	
Daily Contacts WS Superintendent, Derrick Cove, 780-831-1314; WS Supervisor, Justin Minault, 403-391-0714; WS Supervisor, Marty Dushanek, 403-358-8911; Abandonment Engineer, Louis Borbely, 403-650-3939					
Tubing Pressure (kPa)		Casing Pressure (kPa) 0		Weather Clear	
				Temperature (°C) -20	
				Lease Condition lcy/snow covered	
<b>Last 24hr Summary</b>					
RDMO remaining equipment. MIRU Cascade steamer and Clean Harbors semi vac, Hydro vaced around the conductor barrel on the wellhead down 2" from ground level to cement. The cellar area had ice in it.					
<b>24hr Forecast</b>					
Well is ready for cut and cap.					
Start Time	End Time	Dur (hr)	Op Code	Activity Code	Time P-T-X
06:00	07:30	1.50	RPCOMP	DMOB	P
Trbl Code					
Operation Rig Crew Cleaned up Location. Cooled down Boilers. Made All Equipment Ready for Rig Move. CREW CHANGE.					
07:30	08:00	0.50	RPCOMP	SFTY	P
Hold Pre-job safety meeting with all day personnel, document and discuss all hazards associated with rigging out remaining equipment, loading up all equipment, load securement and demobilizing to next location. Review PJHA, JSA's + IWTP. Check all personnel field tickets + CPC orientation cards - all valid.					
08:00	13:00	5.00	RPCOMP	DMOB	P
<ul style="list-style-type: none"> <li>- Rig out Well-site shack, empty septic tank and prep for transport.</li> <li>- Wrap up remaining equipment in light plant and boilers.</li> <li>- Empty boilers with tank truck - Drain and winterize one boiler, swapping out with boiler off Rig 127 due to issues with boiler.</li> <li>- Load up misc. load on low boy consisting of Bop's, Septic tank, Planking for shacks and loader bucket and grapple forks.</li> <li>- Load up and haul out the equipment as follows:</li> <li>- Wellsite shack</li> <li>- Septic tank</li> <li>- Gen-Set</li> <li>- Doghouse</li> <li>- 2x Boilers</li> <li>- Rig Tank + pump</li> <li>- Clean 400bbl for potable water</li> <li>- Catwalk and pipe racks</li> <li>- Medic Office Trailer.</li> <li>- 4x Light Towers</li> </ul>					
- Conduct pre-trip inspections on all equipment and transport to 300/O-06 65-10 127-00 (multiple round trips with trucks).					
- With all equipment off location conduct walk-around inspection - Shovel up stained snow, no spills or leaks identified, all garbage picked up and disposed of.					
13:00	13:45	0.75	RPCOMP	DMOB	P
Note: All equipment moved off of location - Well ready for cut and cap.					
13:45	14:15	0.50	WELLPR	SFTY	P
Held a PJHA # 03012016 with Cascade steamer crew, Clean Harbors vac crew member. Discussed Hydro vac operations, cold weather, reviewed transportation plan/medic location, lease conditions, muster area and the associated hazards. Reviewed the Site ERP and Injured Worker Transportation Plan with crew members. Safety tickets, orientations checked and valid.					
14:15	17:45	3.50	WELLPR	RTWH	P
Rigged in the vac truck and the steamer unit. Hydro vaced the down around the outside of the conductor barrel to a depth of 2" from ground level to cement. The cellar was full of frozen water and cement. Rigged out the steamer and the vac truck, cleaned up tools and equipment. SDFN.					



# Daily Morning Report

## COPRC DODO CANYON D-04 (WW05-A)

Report #: 5  
 Report Date: 3/1/2016  
 Final Job Status: ABANDONED  
 Final Report? Yes

### Report Fluids Summary

Fluid	To lease (m³)	From lease (m³)	To well (m³)	From well (m³)	Left to recover (m³)
FRESH WATER	0.00	7.45			1.13

### Daily Costs

BU Desc	Vendor	Activity Code	Amount (Cost)
Pressure Truck/Hot Oiler	CANOL OILFIELD SERVICES INC	S990	3,908.00

### Cumulative Job Flared Gas By Zone

Zone	Volume Gas Total (E3m³)

### Perforations

Date	Zone	Top (mKB)	Btm (mKB)	Shot Dens (shots/m)	Current Status

# Daily Morning Report

## COPRC DODO CANYON D-04 (WW05-A)

Report #: 6  
Report Date: 3/2/2016  
Final Job Status: ABANDONED  
Final Report? Yes

Country CANADA	State/Province N.W.T.	Region / Division WCBU	District NEW VENTURES	Field Name Chinook	Field Code 0218
Surface Legal Location Chinook Ground Water Program		API / UWI 300/D-04 65-10 127-00/0		License No. CHINOOK H2O WATER S14L1-003	

Job Information			
Job Category	Primary Job Type	Secondary Job Type	Total Field Estimate (Cost)
ABANDONMENT	ABANDONMENT P&A		143,869.97

<b>Objective</b> Abandon Cut and Cap					
Actual Start Date 2/18/2016 09:00	End Date 3/2/2016 15:30	Abandon Date (C&C) 3/2/2016 15:30	Responsible Grp 1 coved	Responsible Grp 2 lborbel	Responsible Grp 3 Justin Minault
AFE / RFE / Maint.# 10385946	Total AFE Amount (Cost) 347,500.00	Total AFE + Supp Amount (Cost) 347,500.00	Total Field Estimate (Cost) 143,869.97	AFE-Field Estimate (Cost) 203,630.03	
AFE / RFE / Maint.# 10385945	Total AFE Amount (Cost) 21,450.00	Total AFE + Supp Amount (Cost) 21,450.00	Total Field Estimate (Cost)	AFE-Field Estimate (Cost) 21,450.00	

<b>Daily Operations</b>					
Report Start Date 3/2/2016 12:00	Report End Date 3/2/2016 15:30	Daily Cost Total (Cost) 5,929.00	Cumulative Cost (Cost) 143,869.97	Personnel Regular Hours (hr) 10.00	
<b>Daily Contacts</b> WS Superintendent, Derrick Cove, 780-831-1314; WS Supervisor, Mike Flett, 780-933-4595; Abandonment Engineer, Louis Borbely, 403-650-3939					<b>Rig</b> Nabors Production Services, 414
Tubing Pressure (kPa)	Casing Pressure (kPa) 0	Weather Clear	Temperature (°C) -16	Lease Condition lcy/Snow covered	

**Last 24hr Summary**  
NuWave cut and capped well. See Cut & Cap pictures in Attachments.

**24hr Forecast**  
Ready for reclamation TOTC (Mac Watson 780-865-6368).

Start Time	End Time	Dur (hr)	Op Code	Activity Code	Time P-T-X	Trbl Code	Operation
12:00	12:15	0.25	RPCOMP	SFTY	P		Held a PJHA # 03022016 with NuWave Industries, HRN track hoe operator, HRN vac truck operator on cutting and capping the well. Discussed spotting/rigging up, NuWave's Ultra High Pressure Jet Cutter Procedure, cold weather and the associated hazards. Reviewed the site ERP and Injured Worker Transportation Plan with crew members. Crew members safety tickets and orientations checked and valid.
12:15	13:45	1.50	RPCOMP	RTWH	P		Spotted NuWave truck. Set casing cutting tool for 2.48 meters which places the vented cap at 1.5 meters below ground level. Rigged in cutting tool and performed the cut. Rigged out cutting tool. Pulled the Stream Flo Crown 7 1/16 2000 x 7" slip lock csg bowl and csg out of the cellar with the track hoe. Welded the UWI and date on the vented casing cap w/centrilizer and installed it in the 177.8 mm production casing. Cleaned up all tools and equipment. See Cut & Cap pictures in Attachments. Cut off pipe segment measurements:  Production casing: 2.48 meters Surface casing: 1.72 meters  The wellhead assembly will sent to Stream Flo Edmonton. Moved the equipment to N-20 65-00 126-45

<b>Report Fluids Summary</b>					
Fluid	To lease (m³)	From lease (m³)	To well (m³)	From well (m³)	Left to recover (m³)
FRESH WATER	0.00	0.00	0.00	0.00	1.13

<b>Daily Costs</b>			
BU Desc	Vendor	Activity Code	Amount (Cost)
Trucking/Hauling/ Hot Shot Services	HRN CONTRACTING LTD	P100	1,954.00
Wellsite Supervision & Engineering	MJ'S WELLSITE SUPERVISION LTD	T130	1,620.00
Pressure Truck/Hot Oiler	NUWAVE INDUSTRIES INC	S990	2,340.00
Surface Completion Equipment Rental	RIGSAT COMMUNICATIONS INC	Q300	15.00

<b>Cumulative Job Flared Gas By Zone</b>	
Zone	Volume Gas Total (E3m³)

<b>Perforations</b>					
Date	Zone	Top (mKB)	Btm (mKB)	Shot Dens (shots/m)	Current Status

## **Appendix 4     Fluid Summary**

# Fluids Summary

## COPRC DODO CANYON D-04 (WW05-A)

### LEASE FLUID NOTE

- 1) If FRESH WATER has been selected as your FLUID TYPE please make sure the SOURCE library pick list is populated with one of the following (Mandatory)
  - CREEK
  - DUGOUT
  - LAKE
  - MUNICIPAL
  - RIVER
- 2) Continue to populate the NOTE section with additional SOURCE location details

### LEASE FLUIDS

Start Date	Fluid	To Lease (m³)	Source	From Lease (m³)	Dest	Manifest Number	Permit Number / TDL	Vendor	Note
2/5/2016	FRESH WATER	0.46	RIVER			1715	1723	HRN CONTRACTI...	For Hobbit Enviromental steamer

### WELL FLUIDS

Start Date	Fluid	To (m³)	From (m³)	Dens (kg/m³)	Non-recov (m³)	Zone	Note
2/5/2016	FRESH WATER	0.46					Fresh water for steamer to thaw ice plug in Csg.

### JOB FLUID SUMMARY

Fluid	To lease (m³)	From lease (m³)	Lease Bal (m³)	To well (m³)	From well (m³)	Left to recover (m³)
FRESH WATER	0.46	0.00	0.00	0.46	0.00	0.46

# Fluids Summary

## COPRC DODO CANYON D-04 (WW05-A)

### LEASE FLUID NOTE

- 1) If FRESH WATER has been selected as your FLUID TYPE please make sure the SOURCE library pick list is populated with one of the following (Mandatory)
  - CREEK
  - DUGOUT
  - LAKE
  - MUNICIPAL
  - RIVER
- 2) Continue to populate the NOTE section with additional SOURCE location details

### LEASE FLUIDS

Start Date	Fluid	To Lease (m³)	Source	From Lease (m³)	Dest	Manifest Number	Permit Number / TDL	Vendor	Note
2/27/2016	FRESH WATER		WELL	12.00	400bbl			CANOL OILFIELD...	Fluid transferred to dirty 400bbl tank on P-20
2/27/2016	FRESH WATER	15.18	WW04-A		400bbl			CANOL OILFIELD...	Fluid transferred from 300/I-06 65-10 127-00
2/28/2016	FRESH WATER	11.50	MUNICIPAL		400bbl	5280		PBN ENERGY SE...	Potable water for cement job.
2/29/2016	FRESH WATER			6.10	cement return bin			HRN CONTRACTI...	Fluid transferred to cement return bin on E-76
3/1/2016	FRESH WATER		MUNICIPAL	7.45	OTHER LOCATIO...			CANOL OILFIELD...	Transfer clean potable water to 300/O-06 65-10 12...

### WELL FLUIDS

Start Date	Fluid	To (m³)	From (m³)	Dens (kg/m³)	Non-recov (m³)	Zone	Note
2/28/2016	FRESH WATER	1.20		1,000.00			Fill CSG
2/28/2016	FRESH WATER		0.07	1,000.00			Steel Displacement RIH with TBG

### JOB FLUID SUMMARY

Fluid	To lease (m³)	From lease (m³)	Lease Bal (m³)	To well (m³)	From well (m³)	Left to recover (m³)
FRESH WATER	26.68	25.55	0.00	1.20	0.07	1.13

## **Appendix 5     SCVF Test Summary**

# COPRC DODO CANYON D-04 (WW05-A)

Well Header			
Legal WellName	API / UWI	Operator	License No.
COPRC DODO CANYON D-04 (WW05-A)	300/D-04 65-10 127-00/0	CONOCOPHILLIPS	CHINOOK H2O WATER S14L1-003

SCVF TESTS				
Type	Date	Operator	Detection	Com
SCVF	2/29/2016 09:30	Justin Minault	No	Conduct bubble/ soap test for 10min with environmentally friendly, biodegradable phosphate free soap = no flow.



## **Appendix 6      Final Wellbore Schematic**

<b>Country</b> CANADA		<b>State/Province</b> N.W.T.		<b>Region / Division</b> WCBU		<b>District</b> NEW VENTURES		<b>Field Name</b> Chinook		<b>Field Code</b> 0218	
<b>Surface Legal Location</b> Chinook Ground Water Program				<b>API / UWI</b> 300/D-04 65-10 127-00/0				<b>License No.</b> CHINOOK H2O WATER S14L1-003			
<b>Orig KB/RT (m)</b> 309.80		<b>Ground Elevation (m)</b> 307.00		<b>KB-Ground Distance (m)</b> 2.80		<b>KB-CF (m)</b>		<b>KB-TF (m)</b>		<b>Total Depth (mKB)</b> 214.00	
VERTICAL - Original Hole, 3/2/2016 3:30:00 PM				<b>Report Start Date</b> 3/2/2016 12:00		<b>Report End Date</b> 3/2/2016 15:30		<b>Primary Wellbore Affected</b> Original Hole			
<b>WELLHEADS</b>				<b>WELLHEADS</b>							
<b>MD (mKB)</b>				<b>Incl (°)</b>				<b>Vertical schematic (actual)</b>			
<b>WELL CONFIG: VERTICAL</b>				<b>Type</b>				<b>Install Date</b>			
				<b>Des</b>		<b>Make</b>		<b>Model</b>		<b>MAOP (kPa)</b>	
										<b>Top Ring Gasket</b>	
										<b>Bore Min (mm)</b>	
				<b>CASING STRINGS</b>							
				<b>Csg Des</b>		<b>OD (mm)</b>		<b>ID (mm)</b>		<b>Wt/Len (kg/m)</b>	
				Production WW05-A		177.8		159.4		38.692	
										<b>Grade</b>	
										<b>Top Thread</b>	
										<b>Top (mKB)</b>	
										<b>Set Depth (mKB)</b>	
				<b>OTHER IN HOLE</b>							
				<b>Run Date</b>		<b>Description</b>		<b>Top Depth (mKB)</b>		<b>Bottom Depth (mKB)</b>	
				2/28/2016		Bridge Plug - Permanent		79.80		80.30	
				<b>OD (mm)</b>		<b>ID (mm)</b>		<b>Make</b>		<b>Model</b>	
				159.4				Schlumberger		69K PBP	
				<b>Comment</b>							
				7"-10K Permanent Bridge Plug							

MD (mKB)

-333.3

-165.2

2.8

3.8

4.9

5.9

21.8

37.6

53.5

62.3

71.0

79.8

80.0

80.1

80.3

89.2

98.1

107.0

107.7

108.3

109.0

144.0

179.0

214.0

267.0

320.0

373.0

420.9

468.9

## **Appendix 7      Cut and Cap Photos**







D-4

UWW05-AD  
FEB 2016







DT  
(WV05-A)  
FEB2016







