

BOP P-Test Date:		Satisfactory:		Function Test:		Safety Meeting:		Yes	
24 Hour Summary		Perform bubble test on the surface casing and intermediate casing. Check for LEL's and H2S							
Next 24 Hour Forecast		Perform bubble test on the surface casing and intermediate casing. Check for LEL's and H2S							

Wellbore Vol (m³)	Res Fluids	Previous	Daily	To Date	Flaring (e³m³)	Previous	Daily	To Date	Load Fluids	Water (m³)	Oil (m³)	Gas (e³m³)
Tubing:	Gas (e³m³)			0.0	Total Gas		0.0	0.0	To Location	0.00	0.00	0.00
Annulus:	Oil (m³)			0.0	- Dilution Gas		0.0	0.0	From Location	0.00	0.00	0.00
Btm - Perf:	Water (m³)			0.0	- N₂ & CO₂		0.0	0.0	On Location	0.00	0.00	0.00
	Swab Hrs			0.0	Raw Gas		0.0	0.0	Load To Recover	0.00	0.00	0.00
Total:	0.00	Flow Hrs		0.0	No Flaring To Report				Recovery Over Load	0.00	0.00	0.00
Tour Hours:		Personnel on Location		Equipment on Location:				Weather Conditions:		Morning Overcast -14c		
Daily:	2.0	Rig:		AGAT Tech, Steamer, Wellhead Tech				Road Conditions:		Snow Covered and Icy		
Cumulative:	2.0	Service:	4	Hydrovac								
Downtime:		Apache:	1									
Cum. Downtime:	0.0	Total:	5									
NPT:	0Hrs: Cost: \$0	Frac	No Frac to Report									



**DAILY OPERATIONS**  
**NWT Abandonment Report**

**OPERATION DATE:** 11-Mar-2016

**REPORT DATE:** 12-Mar-2016

**REPORT No.:** 02

WELL NAME:	PAN AM POINTED MOUNTAIN K-45A				License # N1798	PAGE No: 1 of 2		
UWI:	302/K-45-6030-12345/02				Surface Loc: K-45-6030-12345	AFE No.: 20-14-0479      ACL WI: 100.00000%		
ELEVATIONS:	KB: 373.30 m		GL: 368.30 m		KB-THF: 6.50 m	AFE Amount: \$29,950		
OBJECTIVE:	Cut and Cap Casing					Start Date: Monday March 07, 2016		
Formation:	Perforations (mKB)		Perforations (mKB)		Perforations (mKB)	End Date: Friday March 11, 2016		
Nahanni (Abandoned)	3074.80	to	3312.50	to	to	Rig Contractor / No.: Rigless		
		to		to	to	Csg. Dia (mm): 177.80      Set At (mKB): 3,080.00		
		to		to	to	Liner O.D. (mm): 114.30      Top At (mKB): 2,794.20		
		to		to	to	Liner Bot. (mKB): 3,082.30      PBTD (mKB): 90.00		
		to		to	to	Tbg. O.D. (mm):      Landed (mKB):		
		to		to	to	Anchor (mm):      Set At (mKB):		

**BOP P-Test Date:** Satisfactory: Function Test: Safety Meeting: Yes

<b>24 Hour Summary</b>	Cut casing strings and remove wellhead. Cap casing strings and cover with dust cap. Back fill the bell hole and install location sign.
<b>Next 24 Hour Forecast</b>	Job complete

<b>OPERATION DETAILS</b>	<b>SCV (kPa)</b>	<b>SICP (kPa)</b>	<b>SITP (kPa)</b>	<b>DAILY COST SUMMARY</b>
--------------------------	------------------	-------------------	-------------------	---------------------------

**March 09 / 2016**

**10:30 hrs.** - Walked Hoe from A-55-6030-12345 to location. Checked around wellhead for LEL's and H<sub>2</sub>S with none found. Bailey's Helicopter SITE #8231.

- Held documented safety meeting with all personnel on location. Reviewed job scope, JSA's, SOP's and all safety concerns.

- Perform ten (10) minute bubble test on the SCV as well as the intermediate casing. No bubbles found in that time period.

**12:00 hrs.** - Issued Apache Ground Disturbance Permit #37287 to all services involved in excavating.

- Dig bell hole around wellhead, frost line is approx. 1.20 meters below ground level.

- Shut down for the night.

**16:00 hrs.** - End of tour.

**March 10 / 2016**

**07:30 hrs.** - Arrive on location, perform walk around lease and rig inspection. Check for LEL's and H<sub>2</sub>S around the wellhead with none found. Bailey Helicopter SITE #8231.

**08:00 hrs.** - Held documented safety meeting with all personnel on location, reviewed JSA's, site specific ERP, SOP's and all safety concerns.

- Steamer applied heat to the wellhead to ensure all valves were free of ice.

**08:30 hrs.** - Performed 10 minute bubble test on the SCV and noted 0 bubble in that time.

**SICP = 0 kPa, SIICP = 0 kPa.**

**09:15 hrs.** - Cut three windows in the 339.7mm surface casing to expose the 244.5mm intermediate casing, found cement between the surface casing and the intermediate casing. Removed the cement and cut the 244.5mm intermediate casing, intermediate casing stayed in place.

- Cut windows in the 244.5mm intermediate casing to expose the 177.8mm production casing. Cut the 177.8mm production casing, production casing popped but stayed in place.

Description	Account	Number	Amount
Contract Supervision	70021	1	\$5,618.00
Safety Case	70529	1	\$967.00
Contract Labor & Services	70017	4	\$9,924.39
Trucking and Hauling	70074	4	\$8,835.10
Equipment Rental	70031	1	\$480.08

<b>Daily Cost:</b>	\$25,825
<b>Previous Cost:</b>	\$1,861
<b>Cum. Cost:</b>	\$27,685

Wellbore Vol (m³)	Res Fluids	Previous	Daily	To Date	Flaring (e³m³)	Previous	Daily	To Date	Load Fluids	Water (m³)	Oil (m³)	Gas (e³m³)
Tubing:	Gas (e³m³)	0.0		0.0	Total Gas	0.0	0.0	0.0	To Location	0.00	0.00	0.00
Annulus:	Oil (m³)	0.0		0.0	Dilution Gas	0.0	0.0	0.0	From Location	0.00	0.00	0.00
Btm - Perf:	Water (m³)	0.0		0.0	- N <sub>2</sub> & CO <sub>2</sub>	0.0	0.0	0.0	On Location	0.00	0.00	0.00
	Swab Hrs	0.0		0.0	Raw Gas	0.0	0.0	0.0	Load To Recover	0.00	0.00	0.00
<b>Total:</b>	Flow Hrs	0.0		0.0	No Flaring To Report				Recovery Over Load	0.00	0.00	0.00

<b>Tour Hours:</b>	<b>Personnel on Location</b>	<b>Equipment on Location:</b>	<b>Weather Conditions:</b>	Morning Overcast -8c / Afternoon Sunny -2c
<b>Daily:</b> 8.5	<b>Rig:</b>	Hoe, Welder, Medic, Picker, Steamer, Crew	<b>Road Conditions:</b>	Snow Covered and Icy
<b>Cumulative:</b> 10.5	<b>Service:</b> 10	CAT		
<b>Downtime:</b>	<b>Apache:</b> 1			
<b>Cum. Downtime:</b> 0.0	<b>Total:</b> 11			
<b>NPT:</b> 0Hrs: Cost: \$0	<b>Frac:</b> No Frac to Report			



**DAILY OPERATIONS**  
**NWT Abandonment Report**

**OPERATION DATE: 11-Mar-2016**

**REPORT DATE: 12-Mar-2016**

**REPORT No.: 02**

<b>WELL NAME:</b>	PAN AM POINTED MOUNTAIN K-45A	License #: N1798	<b>PAGE No:</b>	2	of	2
<b>UWI:</b>	302/K-45-6030-12345/02	<b>Surface Loc:</b> K-45-6030-12345	<b>AFE No.:</b>	20-14-0479		

**10:00 hrs.** - Cut the remaining metal on the windows of the intermediate and surface casings and removed the wellhead.

- Measured from ground level down 1.5 meters, marked and cut the 339.7mm surface casing off at that point.
- Make up 6" circle out of 12.7mm steel and weld in place inside the 177.8mm production casing.
- Make up 8.25" circle out of 12.7mm steel and weld in place on top of the 244.5mm intermediate casing.
- Make up 13.5" circle out of 12.7mm steel, install 1/2" collar c/w nipple and 1/4" valve, and weld in place on top of the 339.7mm surface casing.
- Make up 8" tall protective cap out of the 339.7mm surface casing that was cut off, weld a plate on top of the cap as well as tabs on the side to hold in place. Place over top of the 339.7mm surface casing stump and tacked in place.
- Back filled the bell hole and marked the spot where the lease sign will be installed. Excavated a hole for the post and installed, mixed up cement and filled in around the post. Welded a location sign on the post c/w well name and coordinates.
- Took pictures from well center of North, South, East and West as well as final grade with sign.
- Cleaned up all debris and garbage from location. Job complete.
- Wellhead assemble sent to Stream-Flo in Ft. St. John as per Material Transfer # MT-F-7573-1.

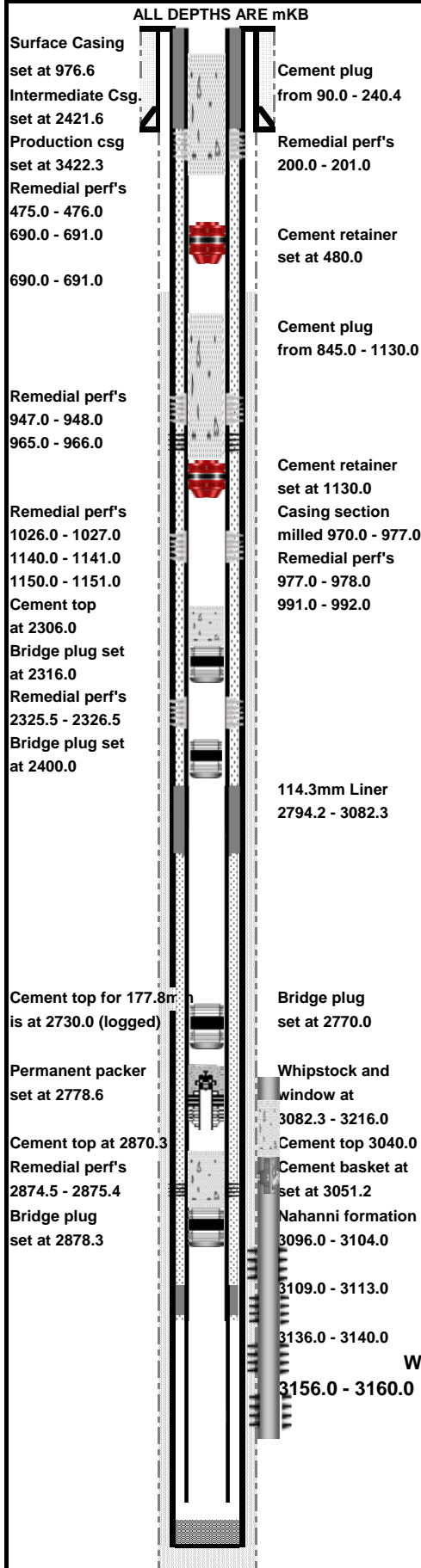
**13:00 hrs.** - End of tour.

**Note: Final report, All costs have been accounted for on the daily report.**



# Apache Canada LTD

## WELL DIAGRAM



WELL NAME: PAN AM POINTED MOUNTAIN K-45A			LICENCE N1798	
PREPARED BY			DATE:	
ELEVATIONS (meters):			DEPTHS (mKB)	
KB: 373.3m GL: 368.3m KB-GL: 5m KB-THF:6.5m			TD: 4,099.6	
			PBTD: 90.0	
CASING/TUBING	SIZE (mm)	WEIGHT (Kg/m)	GRADE	DEPTHS (mKB)
Sur Casing	339.7	81.09	J-55, ST&C	976.6
Intermediate csg	244.5	59.52	N-80, LT&C	
		64.73	SOO-95, LT&C	2421.6
Production csg	177.8	34.23	N-80, LT&C	
			SOO-95, LT&C	3422.3
Liner	114.3	18.75	13Cr-80, FL4S	2794.2 - 3082.3
			ECP	3080
Open Hole	155.6			3082.3 - 3216.0
TUBING STRING / BOTTOM HOLE ASSEMBLY				
ITEM	DESCRIPTION (From Top Down)		LENGTH (m)	Btm (mKB)
1	KB to THF		6.50	6.50
2				
3	Surface, Intermediate and production casings were cut and capped 1.5 meters			
4	below ground level.			
5				
6				
7				
8				
9				
10				
11				
12				
13				
14				
15				
16				
17				
18				
19				
20				
21				
22				
23				
24				
25				
26				
27				
28				
29				
30				
31				
32				
33				
34				

### Wellhead Valves: Size/pressure Rating Serial Number Manufacturer

Top, Master: \_\_\_\_\_

Bottom, Master: \_\_\_\_\_

Wing, Valve: \_\_\_\_\_

Casing Valve 1: \_\_\_\_\_

Casing, Valve 2: \_\_\_\_\_

Casing, Relief Valve: \_\_\_\_\_

Tubing Spool: \_\_\_\_\_

# Apache Well Intervention MINI-Program



Well Name:	PAN AM POINTED MOUNTAIN K-45A		Date:		
UWI (Downhole):	302/K-45-6030-12345/02		UWI (Surface):	K-45-6030-12345	
Working Interest:	100.00000%		License Number:	N1798	
Cost Center or AFE:	20-14-0479		Budget Category:		
Authorized Cost:	\$29,950		Cost Estimate Required:		
Expected Inc. Production:	<div>Gas</div> <div></div> e3m3/day <div>Condy</div> <div></div> m3/day <div>Oil</div> <div></div> m3/day				
Access Issues:	<input type="radio"/> All Year Access <input type="radio"/> Winter Access <input type="radio"/> Dry Weather only <input type="radio"/> Critical Wildlife Area <input type="radio"/> Unknown				
Facilities Issues <input type="checkbox"/>					
Objective:	Cut and Cap Casing				
Procedures:	<ul style="list-style-type: none"> <li></li> </ul>				
Formation Name(s):					
Perforations (mKB):					
Bottom Hole Press:			kPa		
Shut-in Tubing Press.			kPa		
Pipeline Press @ Tie-in:			kPa		
Bottom Hole Temp.:			oC		
H2S:			ppm		
Current Gas Rate:			e3m3/day		
Current Condensate Rate:			m3/day		
Current Oil Rate:			m3/day		
Current Water Rate:			m3/day		
Single Completion:					
One Tubing String:					
Tubing Type:					
Wellbore Diagram	Deviation Survey	Last Workover Reports	Well History	Other	
<div>ORIGINATED BY:</div> <div></div> <div>DATE:</div> <div></div>					
<div>REVIEWED BY:</div> <div></div> <div>DATE:</div> <div></div>					
<div>APPROVED BY:</div> <div></div> <div>DATE:</div> <div></div>					

## Apache Well Intervention MINI-Program



### Distribution / Contacts List:

Personnel / Office	Office	Cellular	E-mail Address / Website
Completions Superintendent			
Sr. Operations Foreman			
Operations Foreman			
Production Engineer			
Completion Engineer			
Production Technologist			
Production Optimization Tech			
Area Scheduler			
Records Centre			<a href="mailto:Records.Centre@apachecorp.com">Records.Centre@apachecorp.com</a>
Production Well Reporting			<a href="mailto:ProductionWellReporting@apachecorp.com">ProductionWellReporting@apachecorp.com</a>
Daily Reports			<a href="mailto:Daily.CompReports@apachecorp.com">Daily.CompReports@apachecorp.com</a>
			Via electronic System if applicable

### PREPARING FOR OPERATIONS

1. Coordinate WELLSITE/FACILITY HANDOVER process and document with relevant operations personnel before starting operations onsite. The "Site Authority Handover Practice" is the governing document for this process. The requirements are as below. See complete Handover Practice document for more detail if required

- ✓ A minimum of 36 hours notice will be given to Production Operations (Prod Ops) prior to the expected custody transfer to prepare an existing wellsite for handover.
- ✓ The Well Site / Facility Handover Confirmation Form (Handover Form) will be used to manage and document approval of the authority and custody transfer to Completions & Well Services (C&WS).
- ✓ The Handover Form is to be filled out by Construction (for new drills) or Production Operations (existing wells) and signed or authorized by both Construction or Production Operations and C&WS before custody of the work site can be transferred.
- ✓ If Energy Isolations are in place (as per the Energy Isolation Practice), the site must be visited and reviewed by the C&WS Wellsite Supervisor in person, to verify that all parties understand the location of the energy isolation points. The C&WS Wellsite Supervisor signs on to the Energy Isolation Log and applies a personal lock to the lock box.
- ✓ The completed Handover Form will be kept on lease when work is taking place to identify the authority and custody for the site.

Ensure that the Emergency Response Plan Contact List is filled out and complete.

**Report all contacts made on the first morning report.**

2. Safety meetings are to be held on a daily basis and prior to performing any non-routine activity. All meetings are to be recorded in the Tour Report and the record is to be signed by all attendees.
3. It is the legal responsibility of contractors and wellsite supervisors to adhere to safe industry practices and to follow the appropriate provincial OH&S Act and Regulations. Contractors and wellsite supervisors are expected to have read and to comply with all OH&S regulations which apply to this program. Contractors are to ensure that their personnel comply with the OH&S regulations. All contractors must have a safety program in place for their personnel.
- 4.
- 5.

**Prepared By: Apache Canada Ltd.**

**Fluids Report**

WELL NAME:	PAN AM POINTED MOUNTAIN K-45A	Start Date: Monday March 07, 2016
LOCATION:	302/K-45-6030-12345/02 Surface :(K-45-6030-12345)	End Date: Friday March 11, 2016

Cumulative Volumes In	Oil 0.00 m³	Water 0.00 m³	Gas 0.00 e³m³	Surface Volumes At End of Day 2
Cumulative Volumes Out	Oil 0.00 m³	Water 0.00 m³	Gas 0.00 e³m³	Oil 0.00 m³
Total Load Fluids To Recover	Oil 0.00 m³	Water 0.00 m³	Gas 0.00 e³m³	Water 0.00 m³
Total Recovery Over Load	Oil 0.00 m³	Water 0.00 m³	Gas 0.00 e³m³	Gas 0.00 e³m³

Date	Day	To   From   On	Fluid Type	Volume	Ticket No	Carrier / Hauler	From Location	To Location	Comment
March 07, 2016	1	On Location	Oil	0.00					Surface Volumes at end of Day 1
March 07, 2016	1	On Location	Water	0.00					Surface Volumes at end of Day 1
March 07, 2016	1	On Location	Gas	0.00					Surface Volumes at end of Day 1
March 11, 2016	2	On Location	Oil	0.00					Surface Volumes at end of Day 2
March 11, 2016	2	On Location	Water	0.00					Surface Volumes at end of Day 2
March 11, 2016	2	On Location	Gas	0.00					Surface Volumes at end of Day 2

## Flare Report

[illegible]



Well Name: PAN AM POINTED MOUNTAIN K-45A
Cumulative NPT Hours: 0
Cumulative NPT Costs: \$0

Date	Day	Hours	Costs	Comment
March 07, 2016	1	0.00	\$0.00	No Comment Entered
March 11, 2016	2	0.00	\$0.00	No Comment Entered

Prepared By: Apache Canada Ltd.

AFE 20-14-0479 Cost Summary

"Sense of Urgency"

UWI: 302/K-45-6030-12345/02 Well Name: PAN AM POINTED MOUNTAIN K-45ALicence #: N1798 AFE No.: 20-14-0479

AFE Estimate \$29,950		Start Date Monday Mar 07, 2016				
Total Actual \$27,685		End Date Friday Mar 11, 2016				
Difference (\$2,265)		Percent AFE 92.438%				
Account Description	Account Number	AFE Estimate	Actual Incl Pre Costs	Dollar Difference	Percent AFE	Comments
			\$0			
Apache Production Revenue Payables	34013	\$0				
Drilling/Percentage Development Overhead	65506	\$0				
Air Transportation	70002	\$0				
Bits, mills, etc.	70003	\$0				
Camp	70005	\$900		-\$900		
Cement and Cementing Services	70006	\$0				
Chemicals	70007	\$0				
Communications	70008	\$0				
Contract Labor & Services	70017	\$12,650	\$11,785	-\$865	93.16%	
Contract Rigs - Daywork	70019	\$0				
Contract Supervision	70021	\$3,500	\$5,618	\$2,118	160.51%	
Kill Weight Fluid	70025	\$0				
Environmental Professional Services	70029	\$0				
Equipment Rental	70031	\$0	\$480	\$480		
Formation and Well Stimulation	70034	\$0				
Formation Testing	70035	\$0				
Fuel	70037	\$0				
Geological and Engineering	70039	\$2,400		-\$2,400		
Electric Line Services	70049	\$0				
Road and Site Preparation	70065	\$0				
Fluid Disposal	70067	\$0				
Snubbing/Coil Tubing Unit	70069	\$0				
Supplies	70070	\$1,000		-\$1,000		
Surveys	70072	\$0				
Trucking and Hauling	70074	\$7,000	\$8,835	\$1,835	126.22%	
Tubular Inspection/Testing	70076	\$0				
Workover Fluid	70077	\$0				
Salt Water/Salt Water Trucking	70113	\$0				
Emulsion/Clean Oil Trucking	70114	\$0				
EUB Regulatory Compliance Expense	70118	\$0				
Pressure Truck Expense	70122	\$0				
Site Prep & temporary access	70166	\$0				
Camp Rentals	70169	\$0				
Flowback Tester/Well Testing/P.Tanks	70186	\$0				
Sand/Proppant	70198	\$0				
Slickline Services	70242	\$0				
Fishing and Milling	70248	\$0				
Water Transfer/Frac Fluid, containment & Transportation	70285	\$0				
Water Treatment/Frac Fluid Recycling	70286	\$0				
Microseismic/DFIT	70287	\$0				
Snubbing	70288	\$0				
Frac Plugs	70289	\$0				
Water Heating	70290	\$0				
Frac Valve / Frac Tree	70291	\$0				
Road Use Expense	70511	\$0				
Safety Case	70529	\$0	\$967	\$967		
Plunger Lifts	71001	\$0				
Fire Protection Systems	71010	\$0				
Other Subsurface Equipment	71032	\$0				
Sucker Rods	71048	\$0				
Tubing	71053	\$0				
Wellhead Assembly	71056	\$2,500		-\$2,500		
Pumps- Subsurface	71069	\$0				

**Prepared By: Apache Canada Ltd.****"top performance and innovation"**

UWI: 302/K-45-6030-12345/02 Well Name: PAN AM POINTED MOUNTAIN K-45ALicence #: N1798 AE No.: 20-14-0479

AFE Estimate \$29,950		Start Date Monday Mar 07, 2016									
Total Actual \$27,685		End Date Friday Mar 11, 2016									
Difference (\$2,265)		Percent AFE 92.438%									
Account Description	Account Number	AFE Estimate	Actual Incl Pre Costs	Dollar Difference							
			\$0		Day 1	Day 2	Day 3	Day 4	Day 5	Day 6	Day 7
Apache Production Revenue Payables	34013	\$0									
Drilling/Percentage Development Overhead	65506	\$0									
Air Transportation	70002	\$0									
Bits, mills, etc.	70003	\$0									
Camp	70005	\$900		-\$900							
Cement and Cementing Services	70006	\$0									
Chemicals	70007	\$0									
Communications	70008	\$0									
Contract Labor & Services	70017	\$12,650	\$11,785	-\$865	\$1,861	\$9,924					
Contract Rigs - Daywork	70019	\$0									
Contract Supervision	70021	\$3,500	\$5,618	\$2,118		\$5,618					
Kill Weight Fluid	70025	\$0									
Enviromental Professional Services	70029	\$0									
Equipment Rental	70031	\$0	\$480	\$480		\$480					
Formation and Well Stimulation	70034	\$0									
Formation Testing	70035	\$0									
Fuel	70037	\$0									
Geological and Engineering	70039	\$2,400		-\$2,400							
Electric Line Services	70049	\$0									
Road and Site Preperation	70065	\$0									
Fluid Disposal	70067	\$0									
Snubbing/Coil Tubing Unit	70069	\$0									
Supplies	70070	\$1,000		-\$1,000							
Survey's	70072	\$0									
Trucking and Hauling	70074	\$7,000	\$8,835	\$1,835		\$8,835					
Tubular Inspection/Testing	70076	\$0									
Workover Fluid	70077	\$0									
Salt Water/Salt Water Trucking	70113	\$0									
Emulsion/Clean oil Trucking	70114	\$0									
EUB Regulatory Compliance Expense	70118	\$0									
Pressure Truck Expense	70122	\$0									
Site prep & temporary access	70166	\$0									
Camp Rentals	70169	\$0									
Flowback Tester/Well Testing/P.Tanks	70186	\$0									
Sand/Proppant	70198	\$0									
Slickline Services	70242	\$0									
Fishing and Milling	70248	\$0									
Water Transfer/Frac Fluid, containment & Transportation	70285	\$0									
Water Treatment/Frac Fluid Recylcing	70286	\$0									
Microseismic/DFIT	70287	\$0									
Snubbing	70288	\$0									
Frac Plugs	70289	\$0									
Water Heating	70290	\$0									
Frac Valve / Frac Tree	70291	\$0									
Road Use Expense	70511	\$0									
Safety Case	70529	\$0	\$967	\$967		\$967					
Plunger Lifts	71001	\$0									
Fire Protection Systems	71010	\$0									
Other Subsurface Equipment	71032	\$0									
Sucker Rods	71048	\$0									
Tubing	71053	\$0									
Wellhead Assembly	71056	\$2,500		-\$2,500							
Pumps- Subsurface	71069	\$0									
TOTAL					\$1,861	\$25,825					

**Prepared By: Apache Canada Ltd.****"Sense of Urgency"****Vendor Report**

UWI: 302/K-45-6030-12345/02 Well Name: PAN AM POINTED MOUNTAIN K-45ALicence #: N1798 AFE No.: 20-14-0479

AFE Estimate \$29,950		Start Date Monday Mar 07, 2016						
Total Actual \$27,685		End Date Friday Mar 11, 2016						
Difference (\$2,265)		Percent AFE 92.438%						
Date	Day	Vendor	Field Ticket	Account Description	Account	Amount	Comment	Recurring
March 07, 2016	1	3-D Line locating	RPV 000495	Contract Labor & Services	70017	\$358.75	Line locating	FALSE
March 07, 2016	1	AGAT Laboratories	16246138H	Contract Labor & Services	70017	\$1,501.75	Perform bubble tests on A-2A and A-4	FALSE
March 11, 2016	2	JAZA Oilfield Consulting	APA-382	Contract Supervision	70021	\$5,618.00	Supervision - Brian Dickson for March 11, travel home March 12 and finish reports March 13	FALSE
March 11, 2016	2	Scott Safety Services	83168	Safety Case	70529	\$967.00	Medic & MTC as well as travel back to Grande Prairie	FALSE
March 11, 2016	2	FMC Technologies	608343	Contract Labor & Services	70017	\$2,845.00	Crew to assist with cut and cap operations	FALSE
March 11, 2016	2	Bert Baxter Transport	29238	Trucking and Hauling	70074	\$3,500.00	Picker to assist with cut and cap operations	FALSE
March 11, 2016	2	Troyer Ventures	FN121137	Contract Labor & Services	70017	\$1,815.00	Steamer to assist with cut and cap operations and travel back to base	FALSE
March 11, 2016	2	Beaver Enterprises	50414	Contract Labor & Services	70017	\$1,901.00	CAT and Hoe to assist with cut and cap operations	FALSE
March 11, 2016	2	Dushay Welding Ltd.	17058	Contract Labor & Services	70017	\$3,363.39	Welder to cut and cap casing strings	FALSE
March 11, 2016	2	Bert Baxter Transport	29238	Trucking and Hauling	70074	\$3,500.00	Picker to assist with cut and cap operations and haul wellheads to Ft. Nelson	FALSE
March 11, 2016	2	Total Oilfield Rentals	FN99529894	Trucking and Hauling	70074	\$485.10	Haul wellheads from Ft. Nelson to Stream-Flo, Ft. St. John	FALSE
March 11, 2016	2	Beaver Enterprises	50417	Trucking and Hauling	70074	\$1,350.00	De-mob CAT and Hoe back to base	FALSE
March 11, 2016	2	KETEK Group	RI-125558	Equipment Rental	70031	\$480.08	Rentals	FALSE



# PAN AM POINTED MOUNTAIN K-45A

March 10, 2016



North facing from well center



South facing from well center



East facing from well center



West facing from well center





# PAN AM POINTED MOUNTAIN K-45A

March 11, 2016



Cutting windows



Casing string after wellhead off



Production capped



Intermediate capped







## FIELD TRANSFER

FT-

MT-F-7573-1

Movement Date:

March 11, 2016

FROM Name:	PAN AM POINTED MOUNTAIN K-45A	TO Name:	Stream-Flo Industries
FROM Surface Location:	K-45-6030-12345	TO Surface Location:	Ft. St. John, British Columbia
FROM DH Location:	302/K-45-6030-12345/02	TO DH Location:	
FROM Coding:	20-14-0479	TO Coding:	20-14-0479

Hauled By:	Bert Baxter Transport / Total Oilfield Rentals	Transferred by:	Brian Dickson
------------	--	-----------------	---------------

Remarks:	
----------	--

**EH&S:**

Has Equipment been thoroughly cleaned and purged of all hazardous materials and residual hazardous materials?				YES	no
Has equipment been tested for the presence of H2S?		YES	Readings:		no
Has equipment been tested for the presence of NORMS?		YES	Readings:		no
Does shipment comply to TDG regulations? Placards?		YES	Placards:		no
Special Precautions Needed?	YES		no		

Commodity/Size/Description:			JTS.	Cond	Unit Measure	Quantity	Condition Unit Price:	TOTAL:
		1 - Cameron, 2" x 3K gate valve S/N: 81956						
		1 - FMC, 2" x 5K, gate valve S/N: 90-120-560-E						
		1 - FMC, 2" x 5K, gate valve S/N: 93-05189						
		1 - FMC, 4" x 5K, master valve S/N: 94-0556-H						
		1 - FMC, 4" x 5K, master valve S/N: 94-0550-H						
		1 - FMC, 4" x 5K, wing valve S/N: 94-0557-H						
		1 - Flow cross, S/N: WLA407863E-L2			Sub Total:			\$0.00

							Taxes GST:	\$0.00
--	--	--	--	--	--	--	------------	--------

Issued By:	Issued Date	Approved By	Approved Date	TOTAL:	\$0.00
Brian Dickson	March 11 / 2016				