

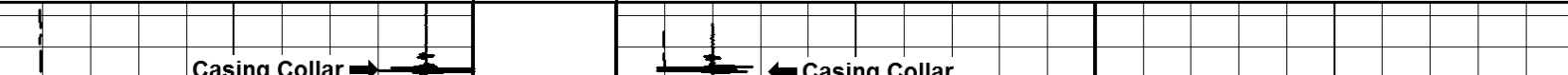
LSD. M-74	COMPANY STRATEGIC OIL & GAS	
SEC. 60	WELL STRATEGIC ET AL CAMERON M-74	
TWP. 10N	FIELD CAMERON	
RGE. 117	PROVINCE NORTHWEST TERRITORY COUNTRY CANADA	
W. 15	Surface LSD M-74-60-10N-117W/15 License # 0002063 Bottom UWI 300/M-74-60-10N-117W/15 LSD. M-74 SEC. 60 TWP. 10N RGE. 117 W. 15	OTHER SERVICES
PERMANENT DATUM: GROUND LEVEL		WELL ELEVATION: 782.1
LOG MEASURED FROM: KELLY BUSHING		METERS ABOVE DATUM: 4.2
DRILLING MEASURED FROM: KELLY BUSHING		G.L. 777.9
DATE	MARCH 3 2015	FLUID TYPE FRESH
DEPTH DRILLER	1473.00	FLUID LEVEL N/A
DEPTH LOGGER	211.00	BOTTOM HOLE TEMP. N/A
BTM LOGGED INTERVAL	211.00	UNIT NO. / LOCATION HD 139/HIGH LEVEL
TOP LOGGED INTERVAL	153.00	RECORDED BY A. CLARKE
LOGGED INTERVAL	58.00	WITNESSED BY M. GREENWOOD
CASING DATA		
SIZE	WEIGHT	GRADE
219.0	35.7	J-55
139.7	20.83	J-55
SURFACE 378.0		
SURFACE 1473.0		
OPEN		
BIT SIZE		
FROM		
TO		
HOLE DATA		
CARRIER and CHARGE DATA		
GUN SIZE and TYPE	CHARGE MAKE	
GUN PHASING / DENSITY	GRAM WEIGHT and TYPE	
PERFORATING INTERVALS		
RUN NO.	NO. SHOTS	FROM
		TO
		RUN NO.
		NO. SHOTS
		FROM
		TO
OTHER INFORMATION		
SERVICE	MAKE	SIZE
PACKER		DEPTH
RETAINER		DESCRIPTION
W/R PLUG		GAUGE RING
W/R PLUG		PIPE CUTTER
PERM. PLUG		NIPPLE TYPE
PERM. PLUG		NIPPLE TYPE
PERM. PLUG		CASING PATCH: I.D.
PERM. PLUG		STAGE TOOL: I.D.
PERM. PLUG		SIZE
PERM. PLUG		DEPTH

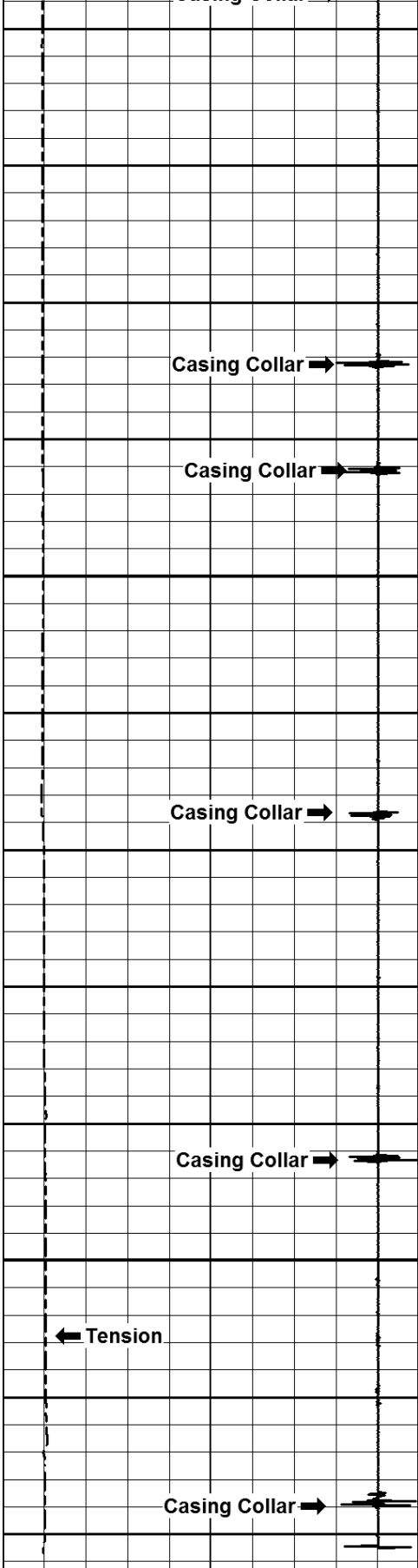
ALL INTERPRETATIONS ARE OPINIONS BASED ON ELECTRICAL OR OTHER MEASUREMENTS AND WE CANNOT, AND DO NOT GUARANTEE THE ACCURACY OR CORRECTNESS OF ANY INTERPRETATIONS, AND SHALL NOT, EXCEPT IN THE CASE OF GROSS OR WILLFUL NEGLIGENCE ON OUR PART, BE LIABLE FOR ANY LOSS, COST, DAMAGES OR EXPENSES INCURRED OR SUSTAINED BY ANYONE RESULTING FROM ANY INTERPRETATIONS MADE BY ANY OF OUR OFFICES, AGENTS, OR EMPLOYEES. THESE INTERPRETATIONS ARE ALSO SUBJECT TO CLAUSE 4 IN OUR GENERAL TERMS AND CONDITIONS AS SET OUT IN OUR PRICE SCHEDULE.

CORRELATED TO:	FMC CASING INSPECTION LOG DATED FEB 22 2015.
REMARKS:	LOGGED AS PER CUSTOMER REQUEST.
TICKET NUMBER:	
438205	

# STRING SHOT

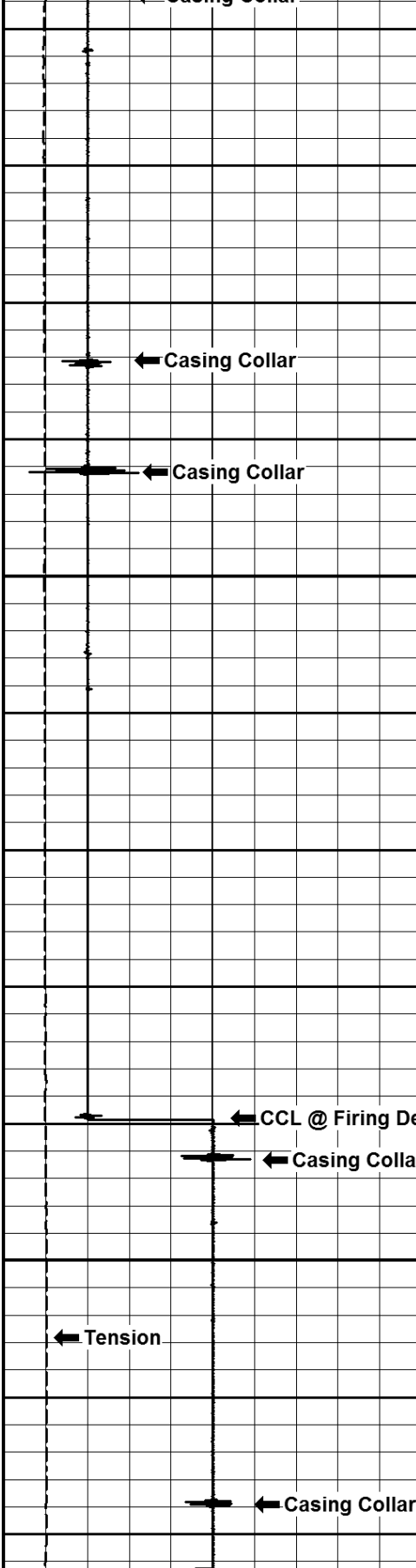
2015-03-03 13:24 CCL GAUGE RING U163 0.0 100.0 TENSION U163 (lbF) 0.0 2500.0 Pass No. 164	METERS 1:240 151.6	CCL DURING U164 0.0 100.0 TENSION U164 (lbF) 0.0 2500.0 File FINAL.pre Rev. 2014.06.06
--	--------------------------	---





2015-03-03 13:24  
CCL GAUGE RING\_U163  
0.0 100.0  
TENSION\_U163 (lbF)  
0.0 2500.0  
Pass No. 164

175  
200  
211.4  
METERS  
1:240



CCL DURING U164  
0.0 100.0  
TENSION\_U164 (lbF)  
0.0 2500.0

File FINAL.pre



COMPANY

STRATEGIC OIL & GAS

WELL

STRATEGIC ET AL CAMERON M-74

FIELD

CAMERON

BOTTOM UWI

300/M-74-60-10N-117W15

PROVINCE

NORTHWEST TERRITORIES

COUNTRY

CANADA