



GEOFRAME
PROCESSED
INTERPRETATION

Analysis Behind Casing

RST-C Spectrolith

* A Mark of Schlumberger

Using the following logs:

COMPANY: CONOCOPHILLIPS CANADA RESOURCES CORP.
WELL: COPRC LOON CREEK O-6
FIELD: LOON CREEK
Province: NORTHWEST TERRITORIES

COUNTRY: CANADA
Date Logged: 17-Feb-2013 Date Processed: 5-March-2013
Well Location: UNIT 0 SECTION 6
3000066510127000

Elevations: KB: 257.6m DF: 257.3m GL: 252.4m

API Number: EL470 Job Number: CA5M-00021

FOLD HERE The well name, location and borehole reference data were furnished by the customer.

Any interpretation, research, analysis, data, results, estimates, or recommendation furnished with the services or otherwise communicated by Schlumberger to the customer at any time in connection with the services are opinions based on inferences from measurements, empirical relationships, and/or assumptions; which, inferences, empirical relationships and/or assumptions are not infallible and with respect to which professionals in the industry may differ. Accordingly, Schlumberger cannot and does not warrant the accuracy, correctness, or completeness of any such interpretation, research, analysis, data, results, estimates, or recommendation. The customer acknowledges that it is accepting the services of any kind or description in respect thereto, and that such services are delivered with the explicit understanding and agreement that any action taken based on the services received shall be at its own risk and responsibility, and no claim shall be made against Schlumberger as a consequence thereof.

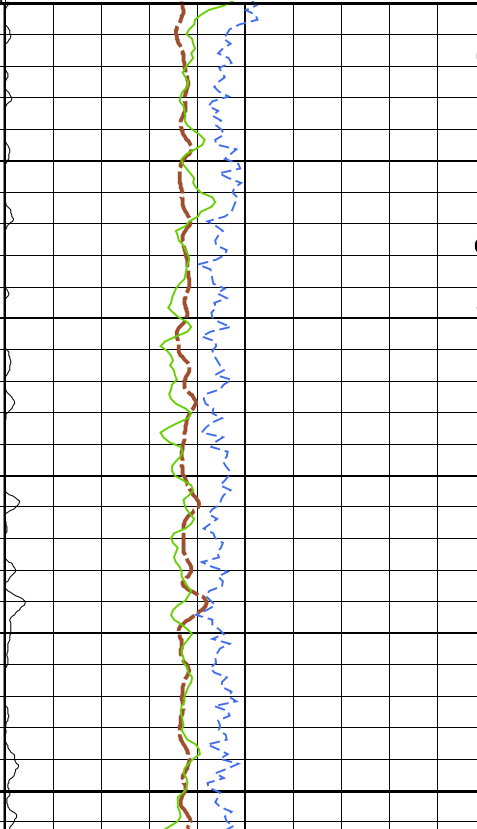
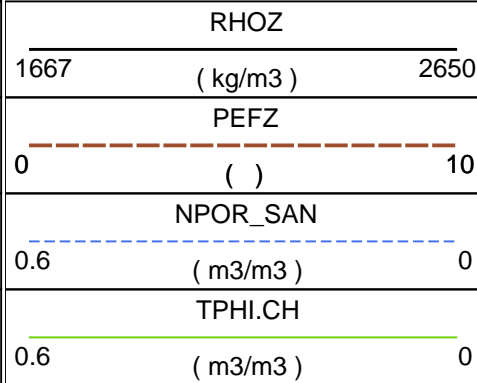
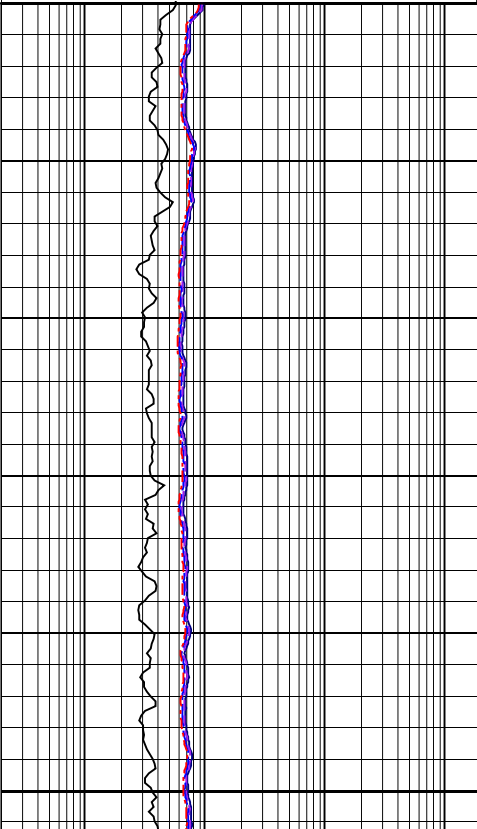
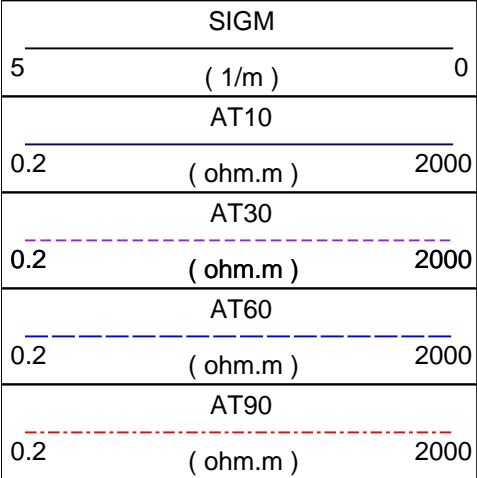
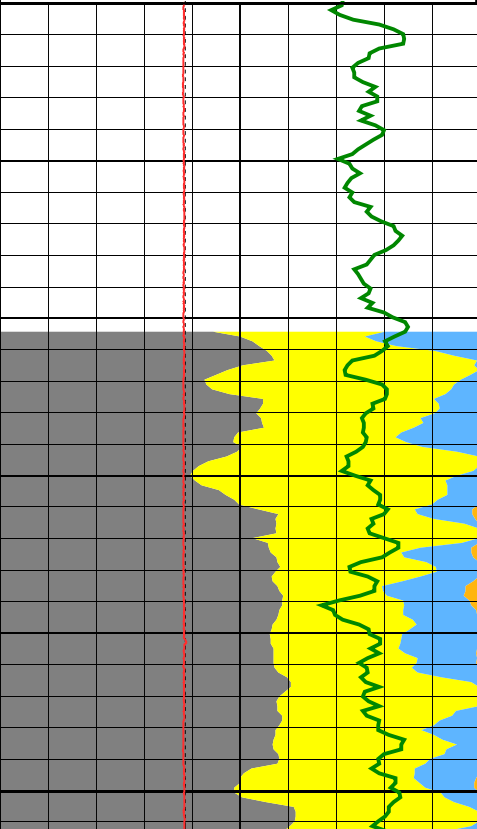
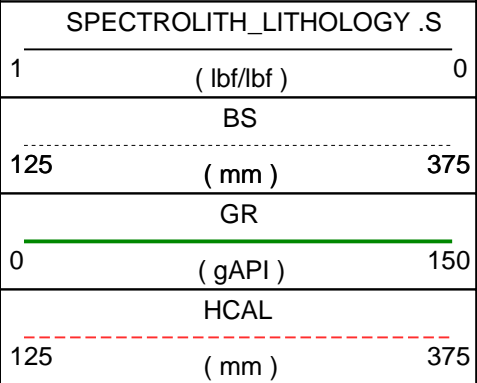
@ 2010 Schlumberger. All rights reserved.

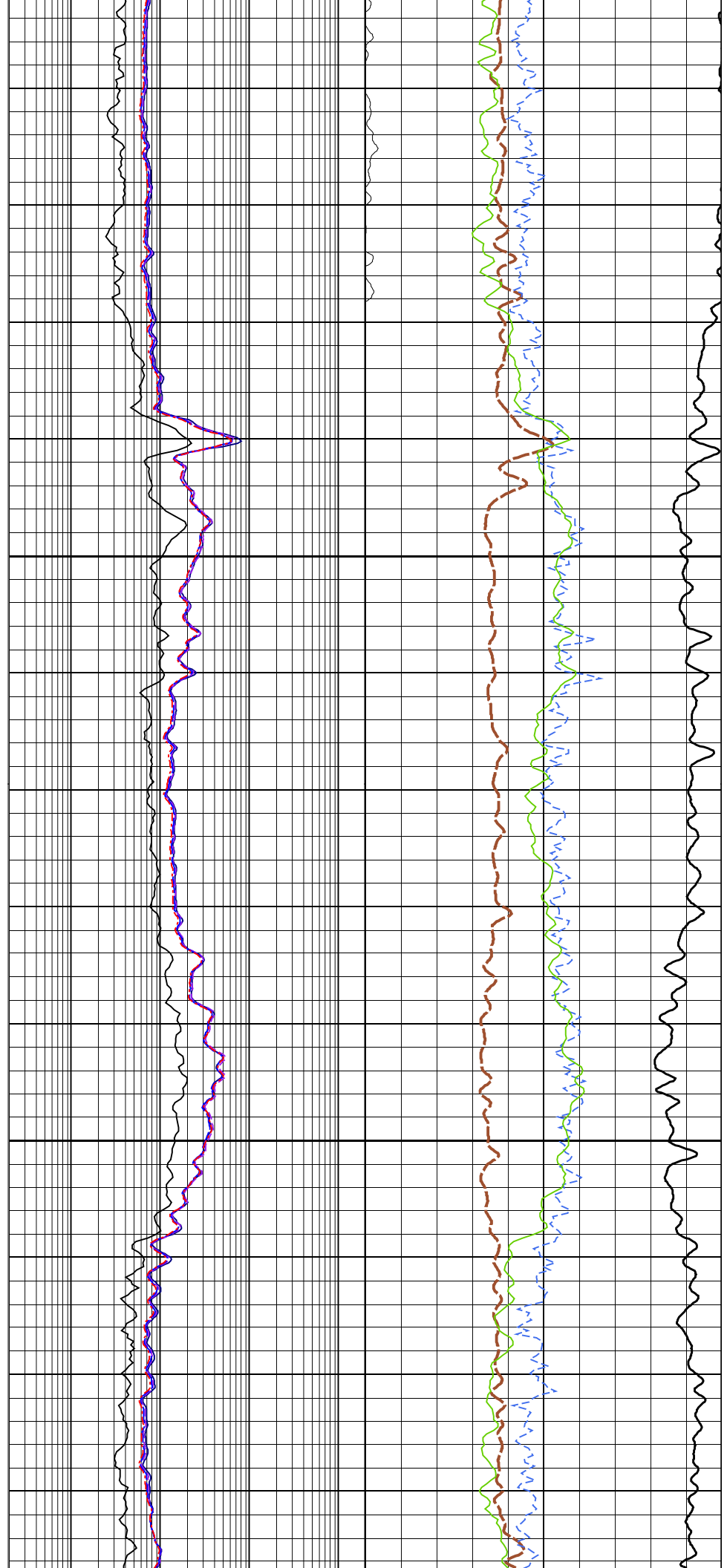
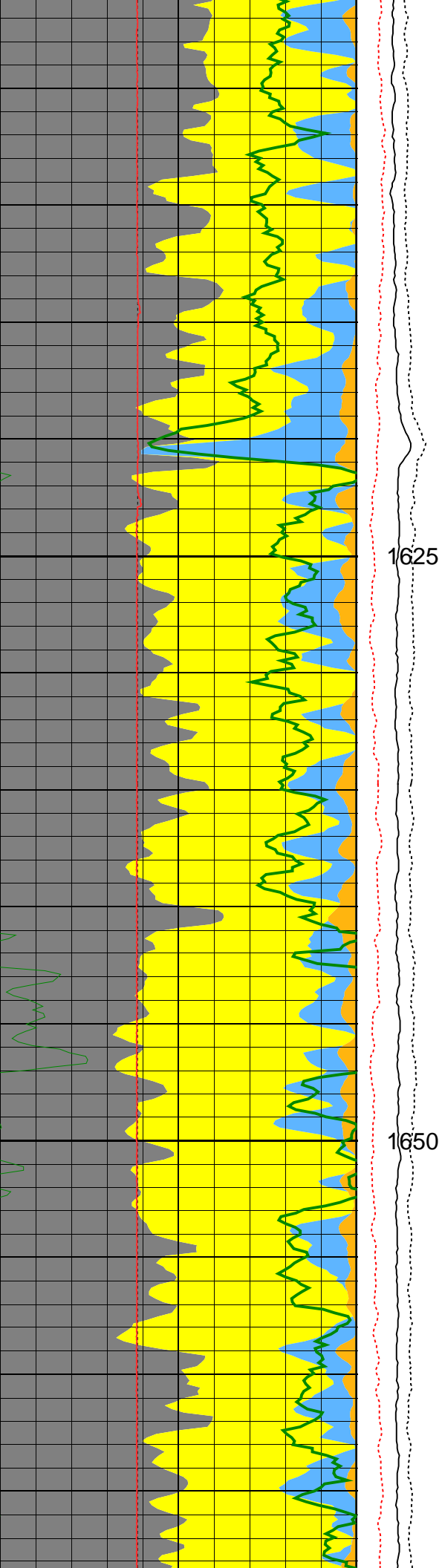
Field Recording:	Location: GRANDE PRAIRIE	Software Version: 20C0-999	Engineer: JEFFREY TATLOCK
------------------	--------------------------	----------------------------	---------------------------

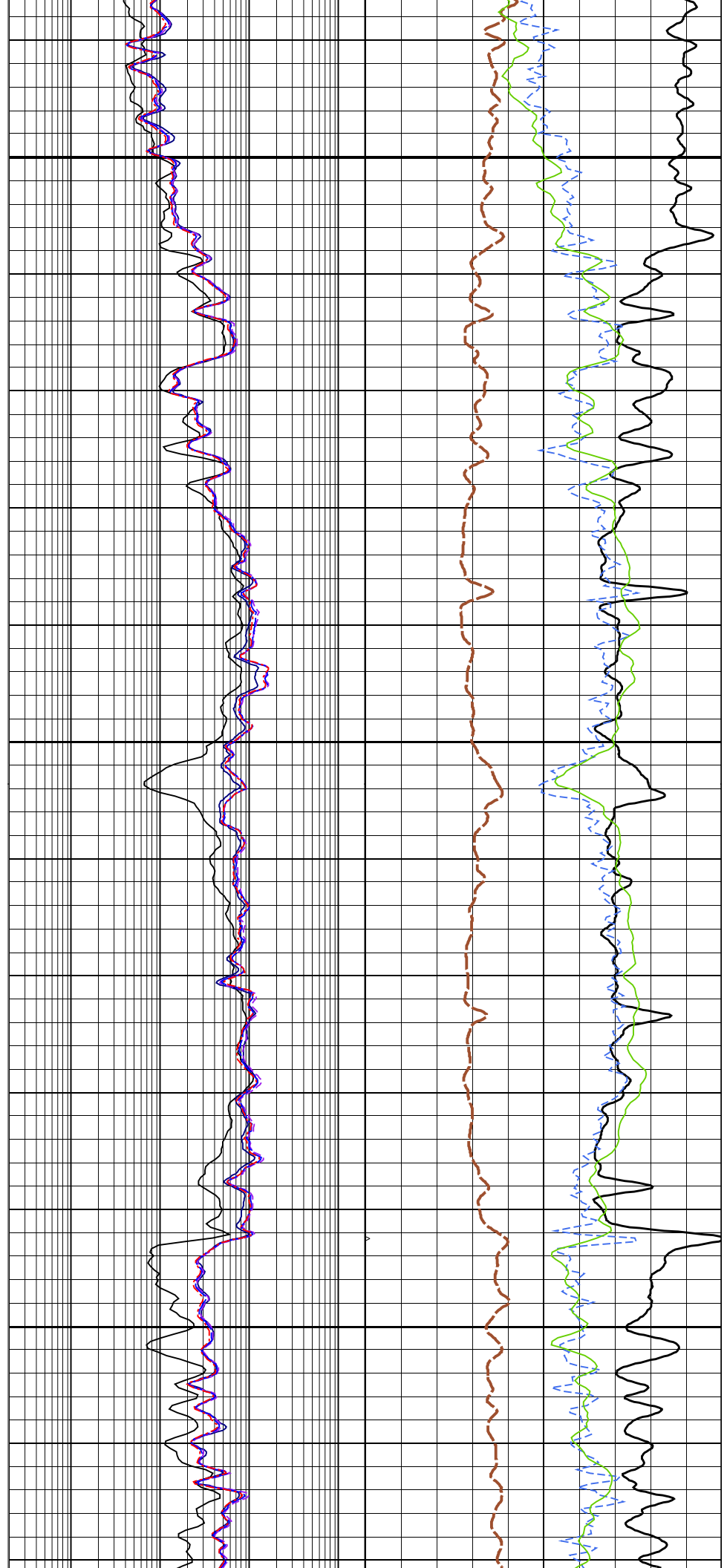
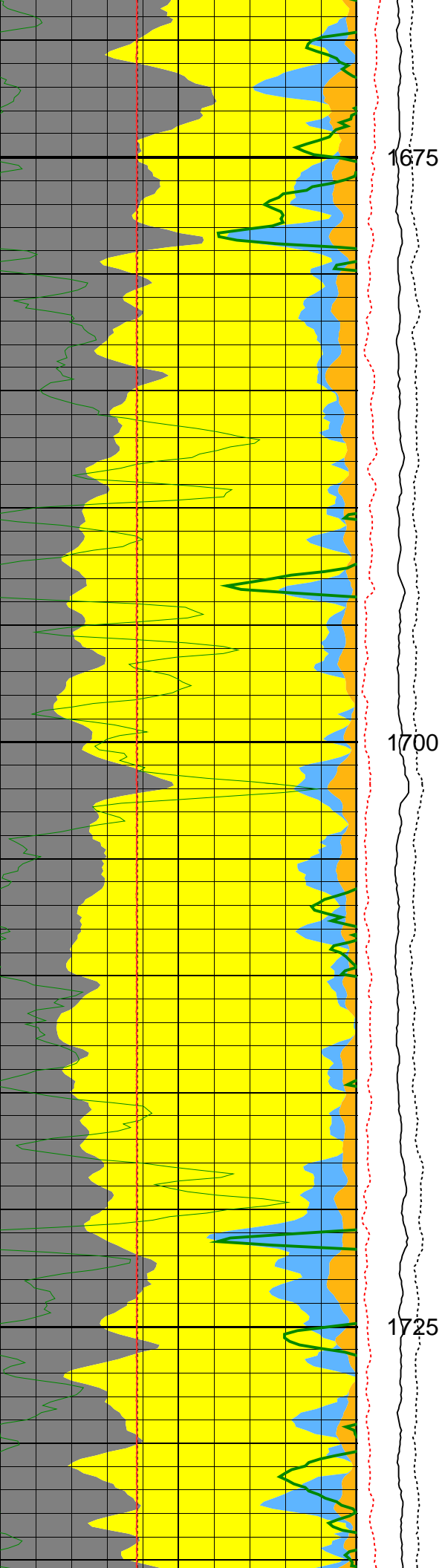
Office Recording:	ICS Center: DCS Calgary	Baseline: GF 4.5	Log Analyst: Mirhasanov
-------------------	-------------------------	------------------	-------------------------

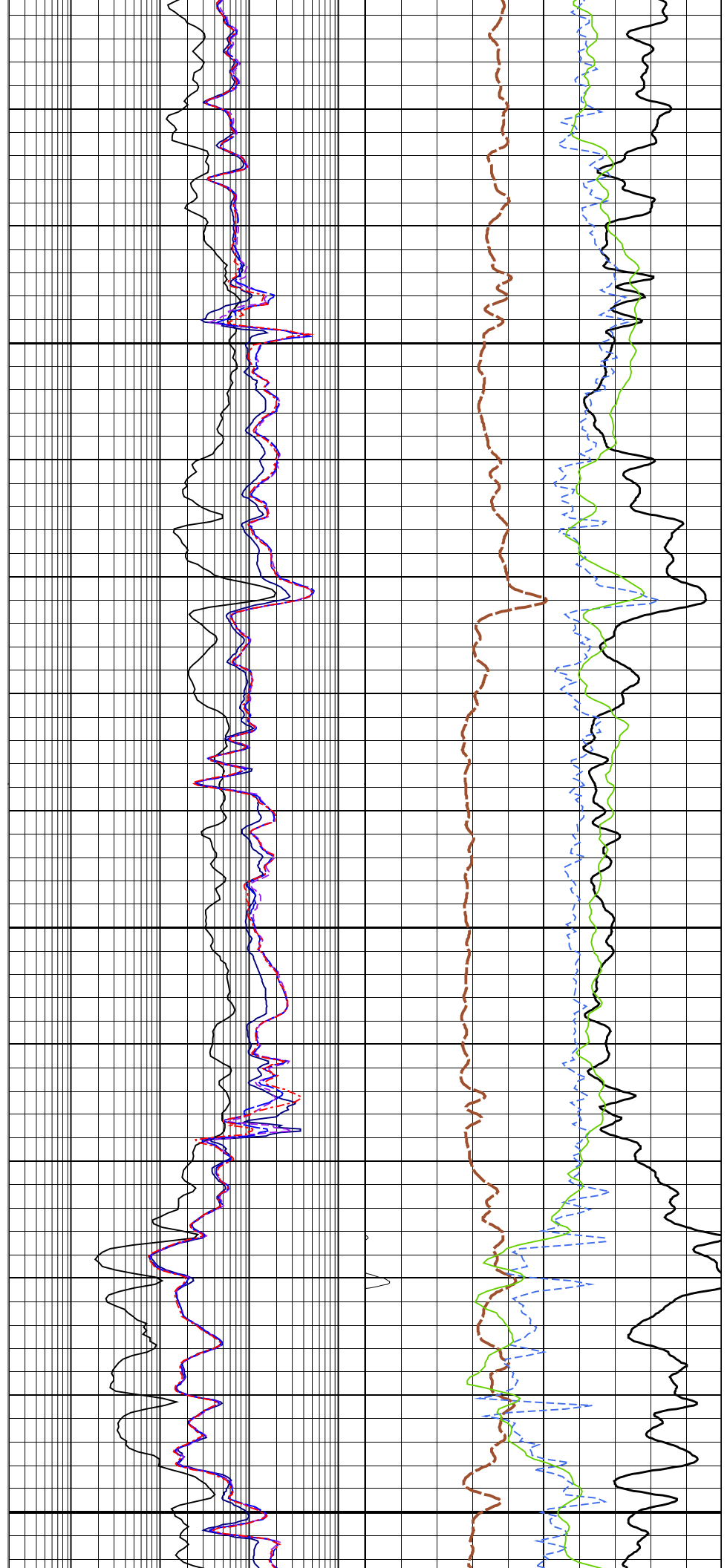
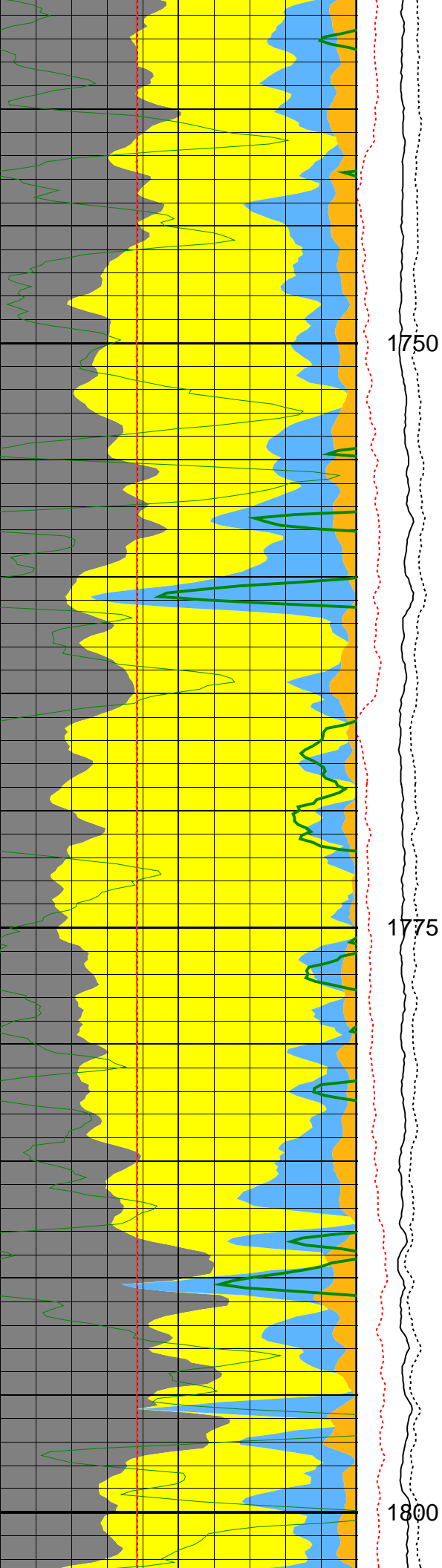
Mud and Borehole Measurements:			
Rm @ Measured Temperature: 500ohm.m @ 20degC	BHT: 66.2degC	Bitsize: 222mm	
Rmf @ Measured Temperature: 375ohm.m @ 20degC	Type Fluid in Hole:	INVERT	
Rmc @ Measured Temperature: @ 20degC	Mud Density: 945kg/m3		

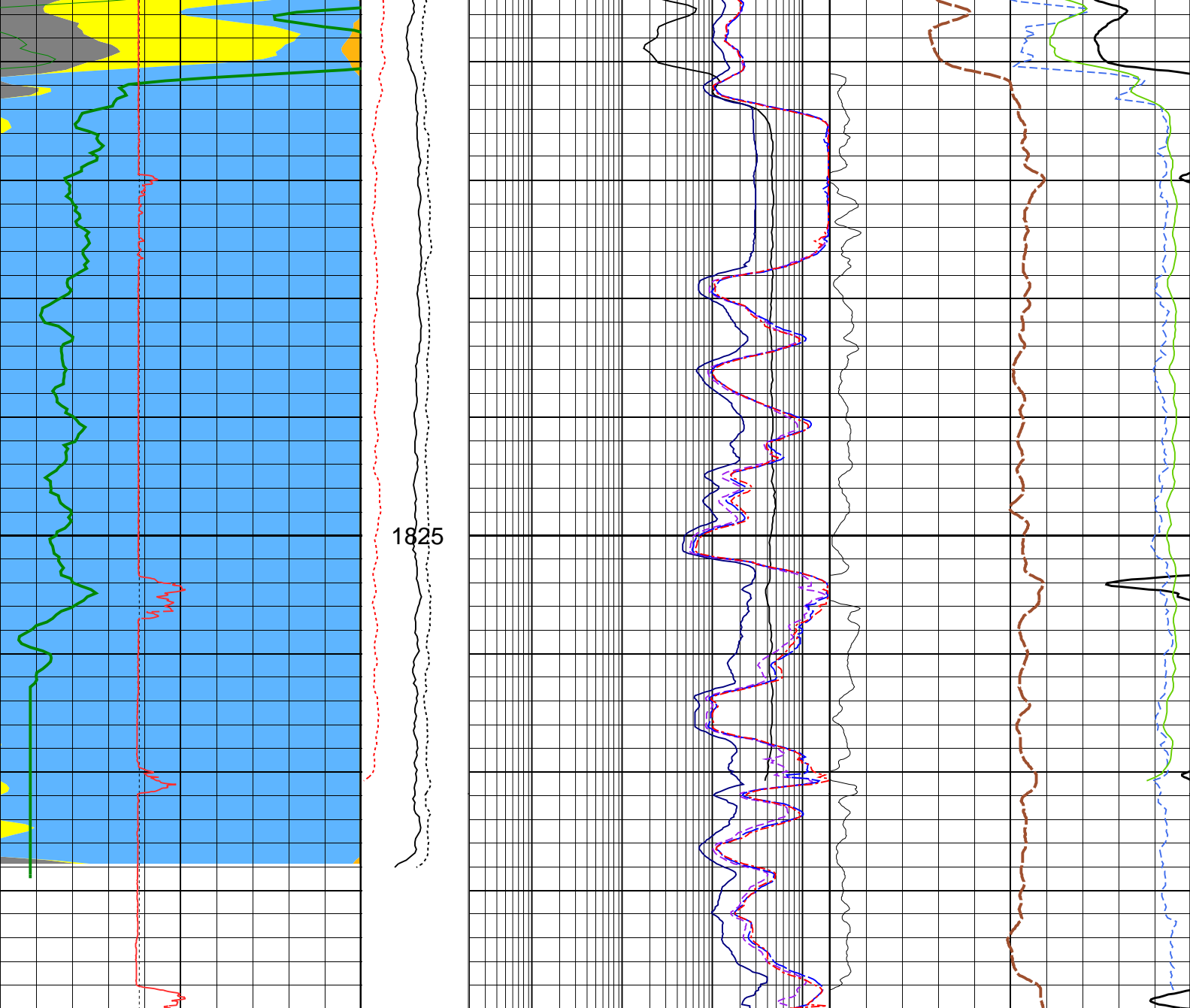
Remarks:












<div>HCAL</div> <div>125 (mm) 375</div>	<div>IRAT_FI</div> <div>0.75 0.25</div>	<div>AT90</div> <div>0.2 (ohm.m) 2000</div>	<div>TPHI.CH</div> <div>0.6 (m3/m3) 0</div>
<div>GR</div> <div>0 (gAPI) 150</div>	<div>NCOR NC</div> <div>0 () 1</div>	<div>AT60</div> <div>0.2 (ohm.m) 2000</div>	<div>NPOR_SAN</div> <div>0.6 (m3/m3) 0</div>
<div>BS</div> <div>125 (mm) 375</div>	<div>FCOR FC</div> <div>0 () 1</div>	<div>AT30</div> <div>0.2 (ohm.m) 2000</div>	<div>PEFZ</div> <div>0 () 10</div>
<div>Salt</div>	<div>MD</div> <div>1 : 240 m</div>	<div>AT10</div> <div>0.2 (ohm.m) 2000</div>	<div>RHOZ</div> <div>1667 (kg/m3) 2650</div>
<div>Coal</div>		<div>SIGM</div> <div>5 (1/m) 0</div>	
<div>Siderite</div>			
<div>Anhy/Gyp</div>			
<div>Pyrite</div>			

Carbonate
Q-F-M
Clay
SPECTROLITH_LITHOLOGY .S
1 (lbf/lbf) 0

Company:
Well:
FIELD:
Province:

CONOCOPHILLIPS CANADA RESOURCES CORP.
COPRC LOON CREEK O-6
LOON CREEK
NORTHWEST TERRITORIES



Date Logged:
Well Location:

17-Feb-2013
UNIT 0 SECTION 6
300O066510127000

Date Processed:

5-March-2013

Elevations:
API Number:

KB: 257.6m
EL470

DF: 257.3m
Job Number:

GL: 252.4m
CA5M-00021