



FILE NO: _____ COMPANY: HUSKY OIL OPERATIONS LIMITED
 WELL: LITTLE BEAR N-9
 FIELD: SLATER RIVER
 PROVINCE: NORTHWEST TERRITORIES

Ver. 3.87
 UID: 300N096500126300
 LICENSE: 463
 LOCATION: SURF LOC: LAT 64° 58' 55.2N LONG 126° 31' 20.2"
 BH LOC. LSD: 64° 58' 55.2"N 126° 31' 20.2"
 LAT 64° 58' 55.2"N LONG 126° 31' 20.2"

PERMANENT DATUM: G.L. _____ ELEVATION: 253.5 M
 LOG MEASURED FROM: K.B. _____ ABOVE P.D.
 DRILL MEAS. FROM: KELLY BUSHINGS

OTHER SERVICES:
 ZDL-CN-GR-CAL
 HDLL-GR-CAL, CVL
 XMAC-GR, FLEX-DSL
 EI-CBIL-GR, WREX
 CBL
 ELEVATIONS:
 KB 258.8 M
 DF _____
 GL 253.5 M

DATE	13-FEB-2012	
RUN	TRIP	1
SERVICE ORDER	CA212310	
DEPTH DRILLER	1868.0 M	
DEPTH LOGGER	1868.0 M	
BOTTOM LOGGED INTERVAL	1847.5 M	
TOP LOGGED INTERVAL	638.5 M	
CASING DRILLER	244.5 MM @ 639.0 M	
CASING LOGGER	638.5 M	
BIT SIZE	222.0 MM	
TYPE OF FLUID IN HOLE	INVERT	
DENSITY	1290.0 G/L	39.0 S
PH	N/A	N/A
SOURCE OF SAMPLE	NO SAMPLE	
RM AT MEAS. TEMP.	NA @ NA	
RMF AT MEAS. TEMP.	NA @ NA	
RMG AT MEAS. TEMP.	NA @ NA	
SOURCE OF RMF	NO SAMPLE	NO SAMPLE
RM AT BHT	NA @ NA	
TIME SINCE CIRCULATION	11.5 HOURS	
MAX. RECORDED TEMP.	69.8 DEGC	
EQUIP. NO.	LOCATION	CANADA OPEN
RECORDED BY	J. COLLIER / I. ZALESKIKH	
WITNESSED BY	H. PAPPENHOVEN	

IN MAKING INTERPRETATIONS OF LOGS OUR EMPLOYEES WILL GIVE CUSTOMER THE BENEFIT OF THEIR BEST JUDGEMENT. BUT SINCE ALL INTERPRETATIONS ARE OPINIONS BASED ON INFERENCES FROM ELECTRICAL OR OTHER MEASUREMENTS, WE CANNOT, AND WE DO NOT GUARANTEE THE ACCURACY OR CORRECTNESS OF ANY INTERPRETATION. WE SHALL NOT BE LIABLE OR RESPONSIBLE FOR ANY LOSS, COST, DAMAGES, OR EXPENSES WHATSOEVER INCURRED OR SUSTAINED BY THE CUSTOMER RESULTING FROM ANY INTERPRETATION MADE BY ANY OF OUR EMPLOYEES.

BIT SIZE	FROM	TO
311.0 MM	0.0 M	639.0 M
222.0 MM	639.0 M	1868.0 M

SIZE	WEIGHT	GRADE	FROM	TO
244.5 MM	53.6 KG/M	J-55	0.0 M	639.0 M

REMARKS

RUN 1 TRIP 1 : TIME STOPPED CIRCULATION: 12-FEB-2012 05:30 PM

RIG: NABORS 23

CREW: J. COLLIER, I. ZALESKIKH, D. KIRWAN, D. SCHNEIDER, N. MCDERMID, J. VANDER HONING

RUN	TRIP	TOOL	SERIES NO.	SERIAL NO.	POSITION
1	1	SWIVEL	3944XD	11848158	FREE
1	1	DHPA	4430XB	12088588	FREE
1	1	TTRM SUB	3981XA	Z173348	FREE
1	1	COMM	3514XC	12079095	FREE

1	1	WTS DGR/SU	1329XB	11758874	FREE
1	1	CN	2446XA	12088884	DECENTRALIZED
1	1	ZDEN	2234XA	168004	PAD_DEVICE
1	1	WTS DBL KNJ	3939XA	10293200	FREE
1	1	ORIT	4401XB	12081717	FREE
1	1	ACOUSTIC EL	1677EA	12045929	CENTRALIZED
1	1	XMAC RX MDR	1678MC	12002062	CENTRALIZED
1	1	XMAC ISO	1678PB	12093102	FREE
1	1	XMAC TX ELC	1678BA	12093106	CENTRALIZED
1	1	XMAC TX ELC	1678FA	12111386	CENTRALIZED
1	1	HDIL ELCNS	1515EA	12032417	STANDOFF
1	1	HDIL MANDRL	1515MA	11997966	STANDOFF
1	1	CENTRALIZER	4341XA	2173361	FREE
1	1	STAR II PS	1022PB	12083301	FREE
1	1	F/ GOM	1036EB	12073777	FREE
1	1	STAR MANDRE	4236MA	10209809	6-PAD_DEVICE
1	1	WTS ISO SUB	3992XA	12074457	FREE
1	1	ORIT	4401XB	12039483	FREE
1	1	WTS DBL KNJ	3939XA	12081597	FREE
1	1	CBIL ELEC	1673EA	10172856	FREE
1	1	CBIL MANDRE	1673MA	10171647	CENTRALIZED

Source File: /dat1a/husky_GA212310/gm_orit_igrf.txt

Model: IGRF2010
Date: 2/12/2012
Elevation: 0.000 ft
Latitude: NORTH 64.980 deg
Longitude: WEST 126.520 deg

Declination: EAST 23 deg 41.5 min 23.691 deg; delta: -30.5 min/yr
Inclination: 80 deg 41.6 min 80.694 deg; delta: -1.4 min/yr

	Horiz	X	Y	Vert	Total
Field Intensity (nT):	9456	8659	3800	57709	58479
Field delta (nT/yr):	16.2	48.2	-70.5	-43.3	-40.1

Source File: /dat1a/husky_GA212310/mdlinsur.txt

PAGE 1

HUSKY OIL OPERATIONS LIMITED
LITTLE BEAR N-9

DEPTH	DEVIATION		T.V.D.	STATION		TOTAL		DOGLEG SEVERITY
	ANGLE	AZIMUTH		N-S	E-W	N-S	E-W	
579.20	0.0	0.0	579.20	0.00N	0.00E	0.00N	0.00E	0.00
595.20	2.2	203.8	595.19	0.28S	0.12W	0.28S	0.12W	0.00
599.20	2.3	244.2	599.19	0.07S	0.13W	0.35S	0.25W	38.47
609.20	2.3	256.9	609.18	0.14S	0.37W	0.49S	0.62W	5.14
619.20	2.5	154.0	619.17	0.02S	0.04W	0.51S	0.66W	37.77
629.20	2.5	204.6	629.16	0.41S	0.12W	0.92S	0.76W	21.26
639.20	2.6	243.1	639.16	0.38S	0.19W	1.31S	0.97W	16.60
649.20	2.6	41.3	649.15	0.29N	0.23E	1.02S	0.74W	51.09
659.20	2.8	42.0	659.13	0.35N	0.32E	0.66S	0.43W	1.34
669.20	2.6	41.2	669.12	0.36N	0.32E	0.30S	0.10W	1.56
679.20	2.2	42.3	679.11	0.31N	0.27E	0.01N	0.17E	3.83
689.20	2.2	45.4	689.11	0.29N	0.27E	0.29N	0.44E	1.49
699.20	1.7	48.9	699.10	0.22N	0.24E	0.51N	0.66E	4.66

709.20	1.5	52.1	709.00	0.19N	0.22E	0.70N	0.90E	2.60
719.20	1.3	54.5	719.09	0.14N	0.18E	0.84N	1.08E	1.25
729.20	1.5	65.2	729.09	0.13N	0.22E	0.97N	1.30E	3.29
739.20	1.6	66.0	739.09	0.11N	0.25E	1.09N	1.55E	0.74
749.20	1.4	72.7	749.08	0.10N	0.25E	1.19N	1.80E	2.78
759.20	1.5	73.2	759.08	0.07N	0.23E	1.25N	2.03E	0.77
769.20	1.6	66.7	769.08	0.09N	0.26E	1.35N	2.29E	2.20
779.20	1.6	66.3	779.07	0.11N	0.25E	1.46N	2.54E	0.20
789.20	1.2	60.4	789.07	0.11N	0.22E	1.57N	2.76E	4.14
799.20	1.2	60.4	799.07	0.11N	0.19E	1.68N	2.96E	0.77
809.20	0.9	68.4	809.07	0.07N	0.15E	1.75N	3.11E	3.21
819.20	0.9	77.5	819.07	0.05N	0.15E	1.80N	3.27E	1.48
829.20	0.7	89.5	829.06	0.01N	0.13E	1.81N	3.40E	2.56
839.20	0.6	101.9	839.06	0.00N	0.13E	1.81N	3.52E	1.94
849.20	0.6	136.1	849.06	0.06S	0.07E	1.76N	3.59E	3.48
859.20	0.7	129.3	859.06	0.08S	0.08E	1.68N	3.67E	1.03
869.20	0.7	101.5	869.06	0.05S	0.10E	1.63N	3.78E	3.47
879.20	0.9	89.9	879.06	0.02S	0.14E	1.61N	3.91E	2.05
889.20	1.0	86.0	889.06	0.01N	0.17E	1.62N	4.08E	1.88
899.20	1.2	83.6	899.06	0.02N	0.19E	1.64N	4.27E	1.45
909.20	1.2	79.3	909.06	0.03N	0.21E	1.67N	4.48E	0.93
919.20	1.4	76.1	919.05	0.06N	0.22E	1.72N	4.70E	2.19
929.20	1.2	92.1	929.05	0.01N	0.23E	1.73N	4.93E	4.14
939.20	1.4	91.7	939.05	0.00S	0.23E	1.73N	5.16E	2.28
949.20	1.5	90.1	949.04	0.00N	0.26E	1.73N	5.42E	0.44
959.20	1.2	87.9	959.04	0.01S	0.22E	1.73N	5.64E	2.48
969.20	1.4	81.3	969.04	0.02N	0.23E	1.75N	5.87E	2.49
979.20	1.4	78.7	979.04	0.05N	0.26E	1.80N	6.13E	1.14
989.20	1.4	72.6	989.03	0.06N	0.22E	1.86N	6.35E	1.28
999.20	1.6	67.2	999.03	0.08N	0.24E	1.95N	6.59E	2.44
1009.20	1.4	73.4	1009.03	0.10N	0.26E	2.05N	6.85E	2.21
1019.20	1.5	68.5	1019.02	0.08N	0.22E	2.12N	7.07E	1.37
1029.20	1.7	60.3	1029.02	0.12N	0.25E	2.24N	7.32E	3.35
1039.20	1.6	68.5	1039.01	0.13N	0.26E	2.38N	7.57E	2.59
1049.20	1.9	67.8	1049.01	0.12N	0.29E	2.50N	7.86E	2.77
1059.20	1.7	78.7	1059.01	0.08N	0.29E	2.58N	8.15E	3.81
1069.20	2.0	79.8	1069.00	0.07N	0.32E	2.64N	8.46E	2.95
1079.20	1.7	85.3	1079.00	0.02N	0.32E	2.67N	8.78E	3.40
1089.20	1.8	75.5	1089.99	0.05N	0.31E	2.72N	9.09E	3.08
1099.20	1.7	64.6	1099.99	0.11N	0.29E	2.84N	9.38E	3.39
1109.20	1.3	56.0	1109.98	0.13N	0.23E	2.97N	9.61E	5.04
1119.20	0.8	37.6	1119.98	0.12N	0.14E	3.09N	9.75E	5.25
1129.20	0.3	32.0	1129.98	0.09N	0.05E	3.18N	9.80E	5.32
1139.20	0.2	126.8	1139.98	0.01N	0.01E	3.19N	9.81E	3.80
1149.20	0.6	66.3	1149.98	0.01S	0.07E	3.18N	9.88E	4.97
1159.20	0.5	85.0	1159.98	0.01N	0.10E	3.18N	9.98E	1.62
1169.20	0.8	70.0	1169.98	0.03N	0.11E	3.22N	10.09E	3.64
1179.20	0.8	73.7	1179.98	0.04N	0.14E	3.26N	10.22E	0.59
1189.20	1.3	70.0	1189.98	0.07N	0.18E	3.32N	10.41E	5.08
1199.20	1.4	66.3	1199.97	0.10N	0.23E	3.42N	10.64E	1.20
1209.20	1.2	63.6	1209.97	0.10N	0.19E	3.52N	10.83E	2.00
1219.20	1.1	67.3	1219.97	0.06N	0.17E	3.58N	11.01E	1.28
1229.20	1.1	66.4	1229.97	0.08N	0.19E	3.66N	11.20E	0.40
1239.20	0.9	51.2	1239.96	0.07N	0.15E	3.74N	11.35E	3.00
1249.20	1.1	27.8	1249.96	0.14N	0.11E	3.86N	11.46E	4.21
1259.20	0.8	17.4	1259.96	0.16N	0.06E	4.04N	11.52E	3.12
1269.20	0.6	303.1	1269.96	0.10N	0.02W	4.13N	11.50E	8.65
1279.20	0.9	252.7	1279.96	0.00N	0.12W	4.14N	11.37E	7.04
1289.20	0.7	254.0	1289.96	0.04S	0.14W	4.09N	11.24E	2.27
1299.20	1.1	236.0	1299.96	0.08S	0.14W	4.01N	11.10E	5.12
1309.20	1.2	230.1	1309.96	0.11S	0.16W	3.90N	10.93E	1.52
1319.20	1.1	226.5	1319.95	0.14S	0.15W	3.76N	10.78E	1.14
1329.20	1.0	228.0	1329.95	0.13S	0.14W	3.63N	10.64E	0.91
1339.20	0.8	227.8	1339.95	0.11S	0.11W	3.52N	10.53E	2.71
1349.20	0.3	221.4	1349.95	0.07S	0.07W	3.45N	10.46E	4.46
1359.20	0.3	251.6	1359.95	0.02S	0.03W	3.43N	10.42E	1.72
1369.20	0.3	312.3	1369.95	0.00S	0.06W	3.43N	10.37E	3.07
1379.20	0.3	304.6	1379.95	0.03N	0.03W	3.46N	10.34E	0.59
1389.20	0.4	0.1	1389.95	0.04N	0.03W	3.50N	10.31E	3.26
1399.20	0.3	52.8	1399.95	0.06N	0.02E	3.56N	10.34E	3.12
1409.20	0.7	50.8	1409.95	0.06N	0.07E	3.61N	10.40E	4.31
1419.20	0.8	78.1	1419.95	0.05N	0.12E	3.67N	10.53E	3.77
1429.20	1.3	73.4	1429.95	0.06N	0.17E	3.72N	10.70E	4.36
1439.20	1.4	91.8	1439.94	0.03N	0.24E	3.75N	10.93E	4.47
1449.20	1.5	109.2	1449.94	0.06S	0.25E	3.69N	11.18E	4.49
1459.20	1.5	123.6	1459.94	0.12S	0.24E	3.57N	11.42E	3.82
1469.20	1.7	132.3	1469.93	0.18S	0.21E	3.39N	11.63E	3.26
1479.20	2.0	138.2	1479.93	0.23S	0.24E	3.16N	11.87E	3.16
1489.20	2.0	131.0	1489.92	0.25S	0.25E	2.91N	12.12E	2.53
1499.20	2.1	117.0	1499.91	0.20S	0.30E	2.71N	12.42E	5.11
1509.20	2.2	115.8	1509.91	0.16S	0.34E	2.55N	12.76E	0.82
1519.20	2.3	116.2	1519.90	0.17S	0.36E	2.38N	13.12E	0.95
1529.20	2.0	112.4	1529.89	0.15S	0.34E	2.23N	13.46E	3.12
1539.20	1.8	107.4	1539.89	0.11S	0.31E	2.12N	13.77E	2.91
1549.20	1.7	104.3	1549.88	0.08S	0.29E	2.04N	14.06E	1.05

1559.20	1.3	104.5	155B.88	0.06S	0.25E	1.98N	14.30E	4.51
1569.20	1.2	103.6	156B.88	0.05S	0.21E	1.93N	14.51E	0.63
1579.20	1.4	101.6	157B.87	0.05S	0.23E	1.89N	14.74E	1.51
1589.20	1.1	95.9	158B.87	0.02S	0.21E	1.86N	14.95E	2.87
1599.20	0.7	116.1	159B.87	0.03S	0.14E	1.83N	15.10E	4.95
1609.20	0.8	127.1	160B.87	0.06S	0.10E	1.78N	15.20E	1.47
1619.20	0.8	166.4	161B.87	0.10S	0.08E	1.66N	15.28E	5.09
1629.20	1.4	191.6	162B.87	0.17S	0.01W	1.49N	15.27E	7.39
1639.20	1.8	188.0	163B.86	0.28S	0.04W	1.21N	15.23E	4.75
1649.20	1.8	191.2	164B.86	0.31S	0.05W	0.89N	15.18E	1.10
1659.20	1.7	201.9	165B.85	0.30S	0.08W	0.60N	15.10E	3.73
1669.20	1.6	196.5	166B.85	0.28S	0.09W	0.32N	15.01E	1.56
1679.20	1.2	181.8	167B.85	0.23S	0.04W	0.09N	14.97E	6.01
1689.20	0.8	159.0	168B.85	0.17S	0.02E	0.05S	15.00E	5.20
1699.20	0.7	123.2	169B.84	0.10S	0.08E	0.18S	15.07E	4.78
1709.20	0.7	104.0	170B.84	0.05S	0.12E	0.23S	15.19E	2.35
1719.20	0.8	78.8	171B.84	0.00S	0.13E	0.23S	15.32E	3.43
1729.20	1.0	66.1	172B.84	0.04N	0.14E	0.19S	15.46E	2.58
1739.20	1.2	63.8	173B.84	0.06N	0.16E	0.10S	15.64E	2.56
1749.20	1.5	66.0	174B.84	0.10N	0.21E	0.01S	15.85E	3.16
1759.20	2.1	67.2	175B.83	0.12N	0.29E	0.11N	16.15E	5.60
1769.20	2.5	63.2	176B.82	0.17N	0.37E	0.28N	16.51E	4.10
1779.20	2.7	59.6	177B.81	0.21N	0.40E	0.50N	16.91E	2.70
1789.20	2.9	59.0	178B.80	0.25N	0.42E	0.74N	17.33E	1.70
1799.20	3.0	58.4	179B.79	0.28N	0.43E	1.01N	17.76E	1.40
1809.20	3.1	56.9	180B.77	0.28N	0.45E	1.29N	18.20E	1.52
1819.20	3.3	56.8	181B.76	0.30N	0.46E	1.59N	18.67E	1.61
1829.20	3.4	55.9	182B.74	0.32N	0.48E	1.91N	19.15E	1.33
1839.20	3.5	55.0	183B.72	0.34N	0.49E	2.25N	19.64E	1.05
1849.20	3.8	54.2	184B.71	0.36N	0.50E	2.61N	20.15E	3.26

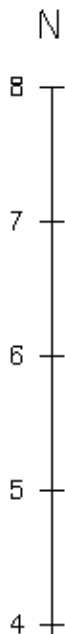
THE FIRST POINT INFORMATION:

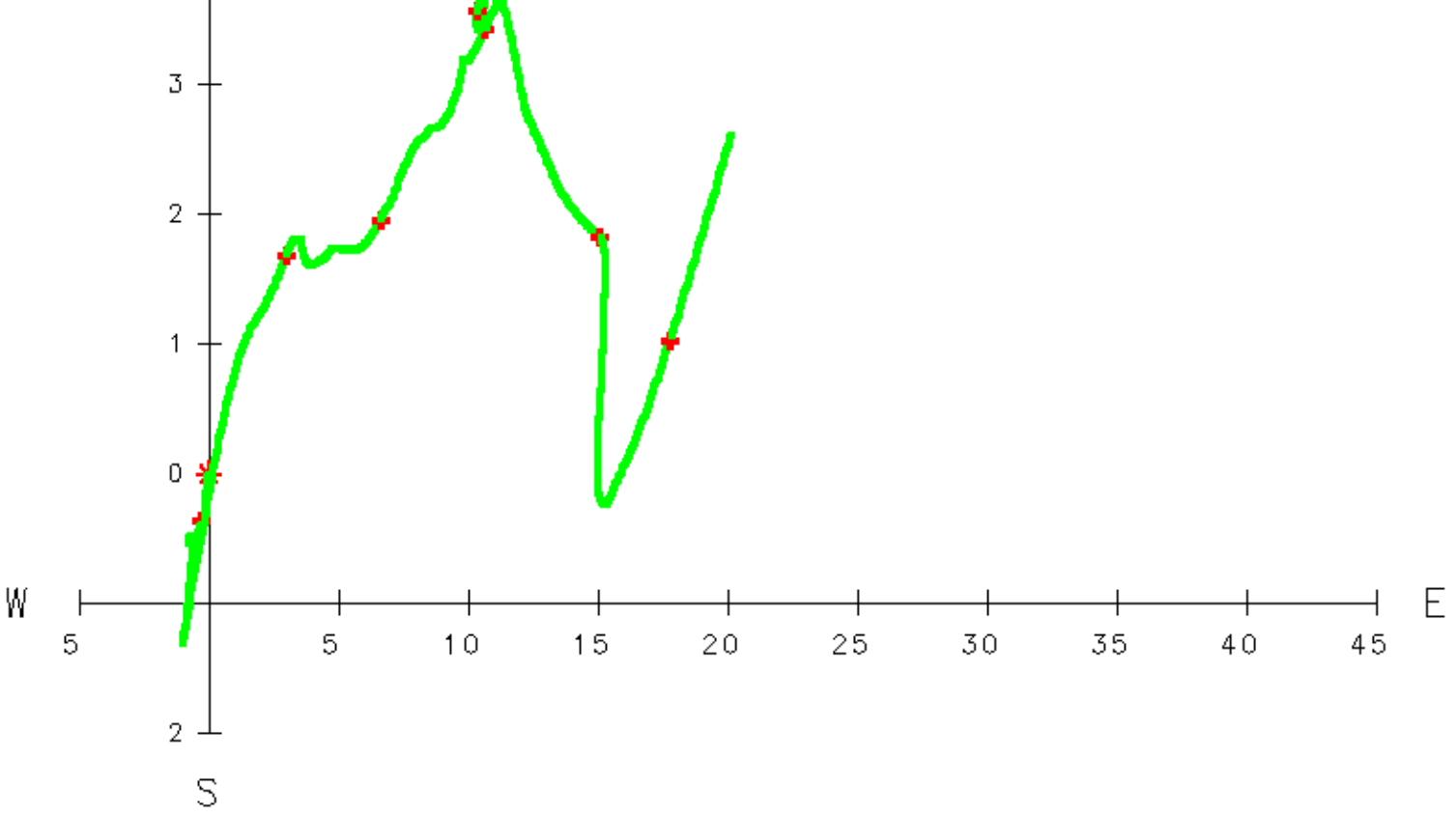
579.20 0.0 0.0 579.20 0.00N 0.00E 0.00N 0.00E

THE LAST POINT INFORMATION:




1849.20 3.8 54.2 184B.71 0.36N 0.50E 2.61N 20.15E

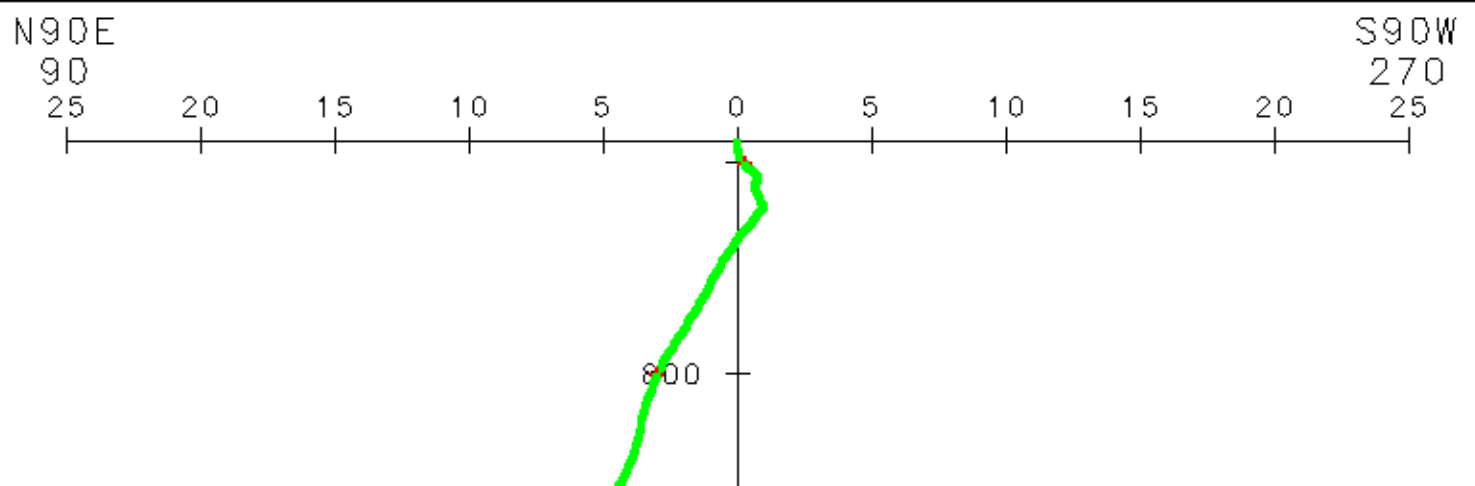
FINAL EAST-WEST DRIFT = 20.15 E
 FINAL NORTH-SOUTH DRIFT = 2.61 N
 FINAL DRIFT DISTANCE = 20.32 M
 FINAL DRIFT DIRECTION = N 82.62 E

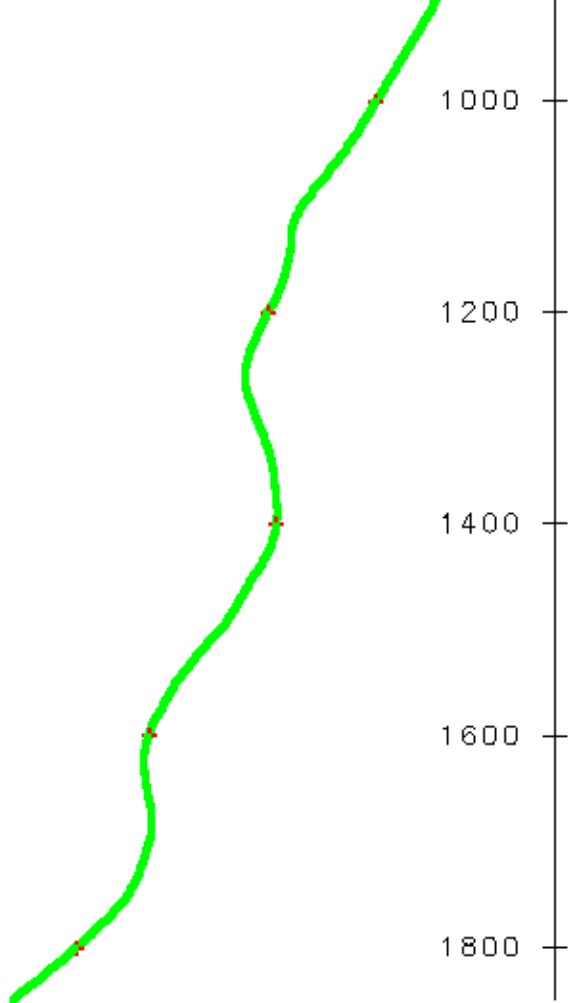




PLAN VIEW

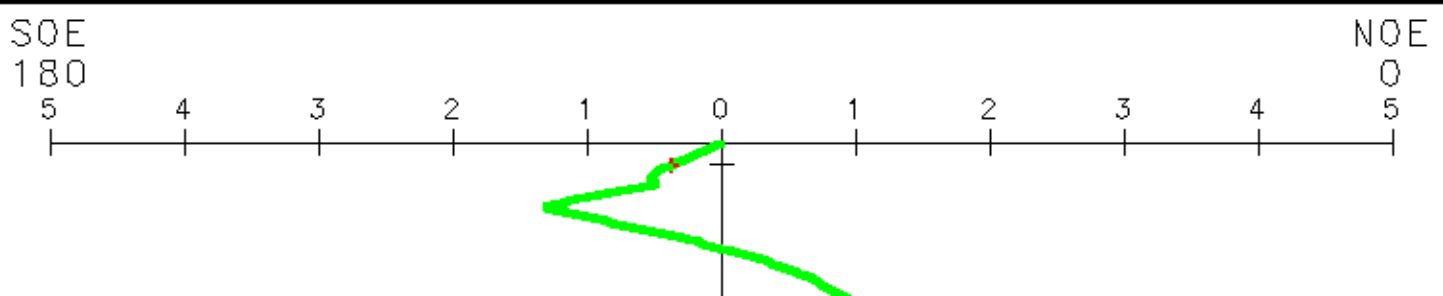
	: WELLBORE COURSE	FINAL EAST-WEST DRIFT	20.15 M EAST
	: MEASURED DEPTH TIE-IN	FINAL NORTH-SOUTH DRIFT	2.61 M NORTH
	: WELLHEAD POSITION	FINAL DRIFT DISTANCE	20.32 M
		FINAL DRIFT DIRECTION	N 82.62 E
		DRIFT UNITS	METERS
		DEPTH UNITS	METERS

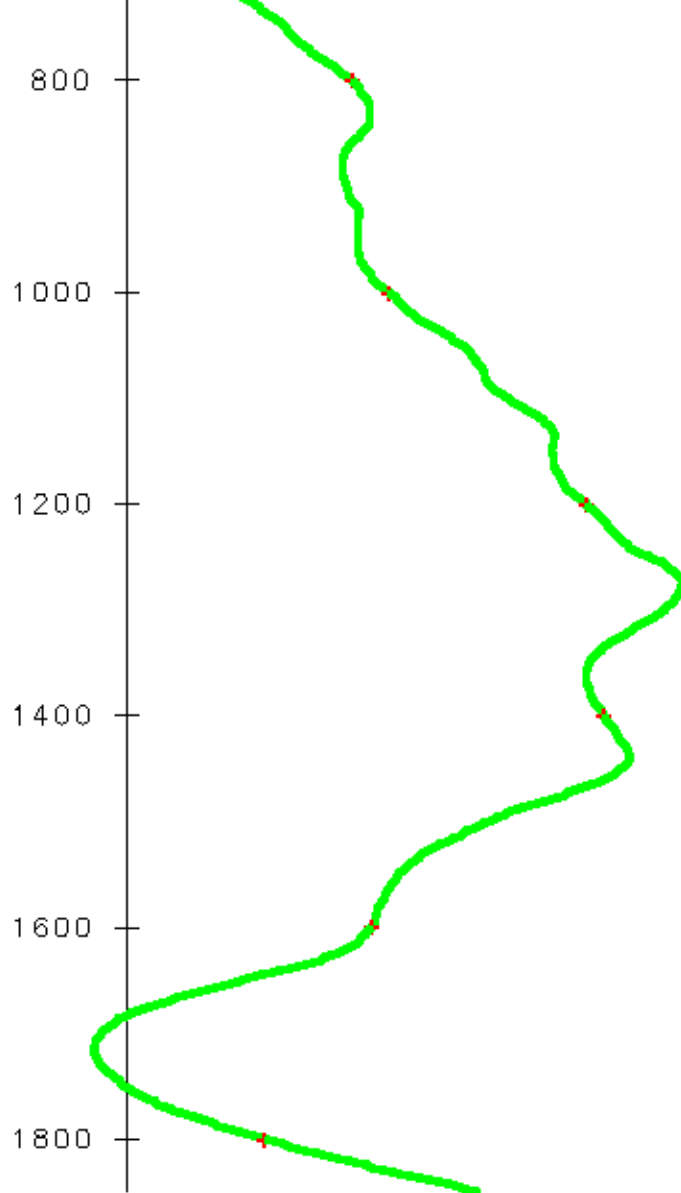




SIDE VIEW FROM AZIMUTH 0

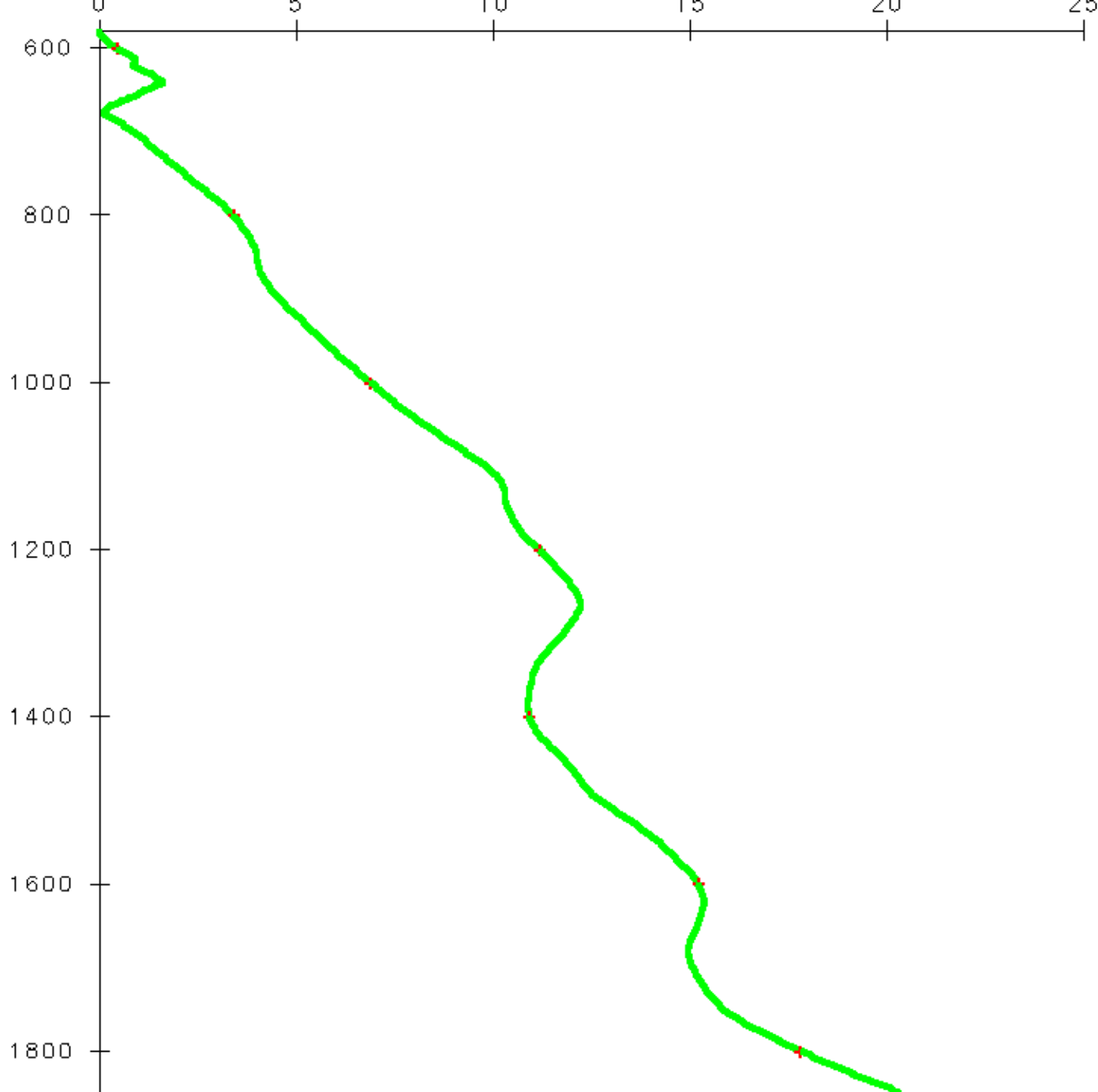
~	: WELLBORE COURSE	MAX. DRIFT N90E	20.15 M
+	: MEASURED DEPTH TIE-IN	MAX. DRIFT S90W	0.98 M
*	: WELLHEAD POSITION	BOTTOM TVD THIS INTERVAL	1848.71 M
		DRIFT UNITS	METERS
		DEPTH UNITS	METERS





SIDE VIEW FROM AZIMUTH 90

~	: WELLBORE COURSE	MAX. DRIFT SOE	1.31 M
+	: MEASURED DEPTH TIE-IN	MAX. DRIFT NOE	4.15 M
*	: WELLHEAD POSITION	BOTTOM TVD THIS INTERVAL	1848.71 M
		DRIFT UNITS	METERS
		DEPTH UNITS	METERS



DEPTH VS. DRIFT

~	: WELLBORE COURSE	MAX. DRIFT FROM WELLHEAD	20.32 M
+	: MEASURED DEPTH TIE-IN	BOTTOM TVD THIS INTERVAL	1848.71 M
*	: WELLHEAD POSITION	DRIFT UNITS	METERS
		DEPTH UNITS	METERS



COMPANY
WELL
FIELD
PROVINCE

HUSKY OIL OPERATIONS LIMITED
LITTLE BEAR N-9
SLATER RIVER
NORTHWEST TERRITORIES

FILE NO:

API NO:

**LOCATION:**

SURF LOC: LAT 64° 58' 55.2N LONG 126°

31' 20.2

BH LOC. LSD:

LAT 64° 58' 55.2"N LONG 126° 31' 20.2"

ELEVATIONS:

KB 258.8 M

DF

GL 253.5 M

UID:

300N096500126300

LICENSE:

463

DATE

13-FEB-2012