



FILE NO:	COMPANY	HUSKY OIL OPERATIONS LIMITED
API NO:	WELL	LITTLE BEAR N-9
	FIELD	SLATER RIVER
	PROVINCE	NORTHWEST TERRITORIES
Vendor:	LOCATION:	
UID:	SURF LOC: LAT 64° 58' 55.24" N LONG 128° 31' 20.2"	
300ND086500126300	BH LOC, LSD:	
LICENSE:	LAT 64° 58' 55.24" N LONG 128° 31' 20.2"	
483		
PERMANENT DATUM	G.L.	ELEVATION
LOG MEASURED FROM	K.B.	253.5 M
DRILL MEAS. FROM	KELLY BUSHING	ABOVE P.D.
		OTHER SERVICES
		ZXL-GR-CAL
		HDIL-GR-CAL, CAL
		FLEX-OSL, IREX
		EI-CRIL-GR, CR
		ELEVATIONS:
		KB 298.8 M
		DF
		GL 253.5 M

DATE	TRIP	13-FEB-2012	1
SERVICE ORDER		CA212310	
DEPTH DRILLER		1868.0 M	
DEPTH LOGGER		1868.0 M	
BOTTOM LOGGED INTERVAL		639.5 M	
TOP LOGGED INTERVAL		SURFACE	
CASING DRILLER		244.5 M	0 639.0 M
CASING LOGGER		639.5 M	
BIT SIZE		222.0 MM	
TYPE OF FLUID IN HOLE		INVERT	
DENSITY	VISCOSITY	1280.0 G/L	39.0 S
PH	FLUID LOSS	N/A	N/A
SOURCE OF SAMPLE		ND SAMPLE	
RM AT MEAS. TEMP.		NA	0
RM AT MEAS. TEMP.		NA	0
RM AT MEAS. TEMP.		NA	0
SOURCE OF RMF	RMG	ND SAMPLE	
RM AT BHT		NA	0
TIME SINCE CIRCULATION		11.5 HOURS	
MAX. RECORDED TEMP.		69.8 DEGC	
EQUIP. NO.	LOCATION	Z008672	CANADA OPEN
RECORDED BY		J. COLLIER / I. ZALESKI KH	
WITNESSED BY		H. BARENHOVEN	

IN MAKING INTERPRETATIONS OF LOGS OUR EMPLOYEES WILL GIVE CUSTOMER THE BENEFIT OF THEIR BEST JUDGEMENT. BUT SINCE ALL INTERPRETATIONS ARE OPINIONS BASED ON INFERENCES FROM ELECTRICAL OR OTHER MEASUREMENTS, WE CANNOT, AND WE DO NOT GUARANTEE THE ACCURACY OR CORRECTNESS OF ANY INTERPRETATION. WE SHALL NOT BE LIABLE OR RESPONSIBLE FOR ANY LOSS, COST, DAMAGES, OR EXPENSES WHATSOEVER INCURRED OR SUSTAINED BY THE CUSTOMER RESULTING FROM ANY INTERPRETATION MADE BY ANY OF OUR EMPLOYEES.

BIT SIZE	FROM	TO
311.0 MM	0.0 M	639.0 M
222.0 MM	639.0 M	1868.0 M

SIZE	WEIGHT	GRADE	FROM	TO
244.5 MM	53.6 KG/M	J-55	0.0 M	639.0 M

REMARKS

RUN 1 TRIP 1: TIME STOPPED CIRCULATION: 12-FEB-2012 05:30 PM

RIG: NABORS 23

CREW: J. COLLIER, I. ZALESKI KH, D. KIRWAN, D. SCHNEIDER, N. McDERMID, J. VANDER HONING

RUN	TRIP	TOOL	SERIES NO.	SERIAL NO.	POSITION
1	1	SWIVEL	3844XD	11848158	FREE
1	1	DHPA	4430XB	1208588	FREE
1	1	TRM SUB	3881XA	Z173348	FREE
1	1	CONV	3844XD	1082668	FREE

		WTS DGR/SU	35140A	12079085	FREE
		DN	13290B	11756674	FREE
		CN	24482A	12068884	DECENTRALIZED
		ZDEN	22340A	168004	PAD DEVICE
		WTS DBL KMJ	38380A	10283200	FREE
		ORT	44010B	12081717	FREE
		ACOUSTIC EL	1677EA	12045829	CENTRALIZED
		XMAC RX KDR	1678MC	12002082	CENTRALIZED
		XMAC ISO	1678PB	12093102	FREE
		XMAC TX ELC	1678BA	12093108	CENTRALIZED
		XMAC TX ELC	1678FA	12111388	CENTRALIZED
		HDIL ELONS	1515EA	12032417	STANDOFF
		HDIL MANDRI	1515MA	11897868	STANDOFF
		CENTRALIZER	43410A	2173381	FREE

ECLIPS 6.1 EC-PLOT Jan 20, 2012

Fri Feb 24 08:32:45 2012

Perplot Cplot Pdf_Cpp /main/16 Fileview 2.02

CURVE DESCRIPTION REPORT

CURVE NAME	CREATION DATE	CURVE DESCRIPTION
F1:FGACBLQI	Feb 23 13:20:31 2012	FIXED GATE AMPLITUDE IN CBL
F1:FGPCBLQI	Feb 23 13:20:31 2012	FIXED GATE PICK FOR CBL TRANSMITTER RECEIVER
F1:GR	Feb 23 13:20:31 2012	GAMMA RAY
F1:PPTQI	Feb 23 13:20:31 2012	USER INPUT PREDICTED PIPE TIME
F1:SFACBQI	Feb 23 13:20:31 2012	SURFACE PICK 1ST ARRIVAL TIME, CBL SPACING
F1:SPD	Feb 23 13:20:31 2012	SPEED
F1:TEN	Feb 23 13:20:31 2012	DIFFERENTIAL TENSION
F1:WVCBQI	Feb 23 13:20:31 2012	CBL WAVEFORM

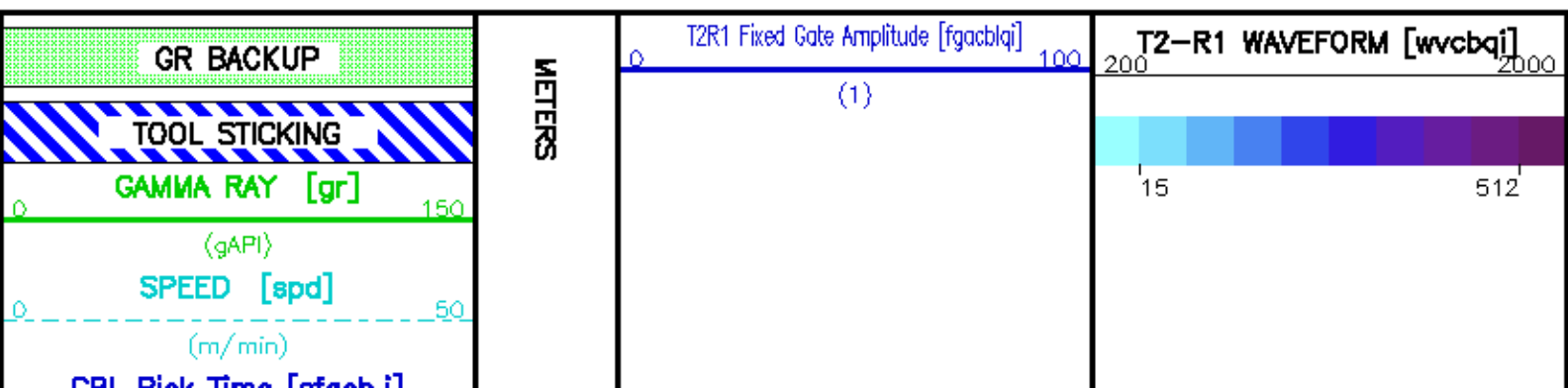
CURVE MEASURE POINT OFFSET

CURVE	OFFSET (m)	CURVE	OFFSET (m)	CURVE	OFFSET (m)	CURVE	OFFSET (m)
FGACBLQI	13.41	GR	31.38	SFACBQI	13.41	TEN	0.00
FGPCBLQI	13.41	PPTQI	13.41	SPD	0.00		

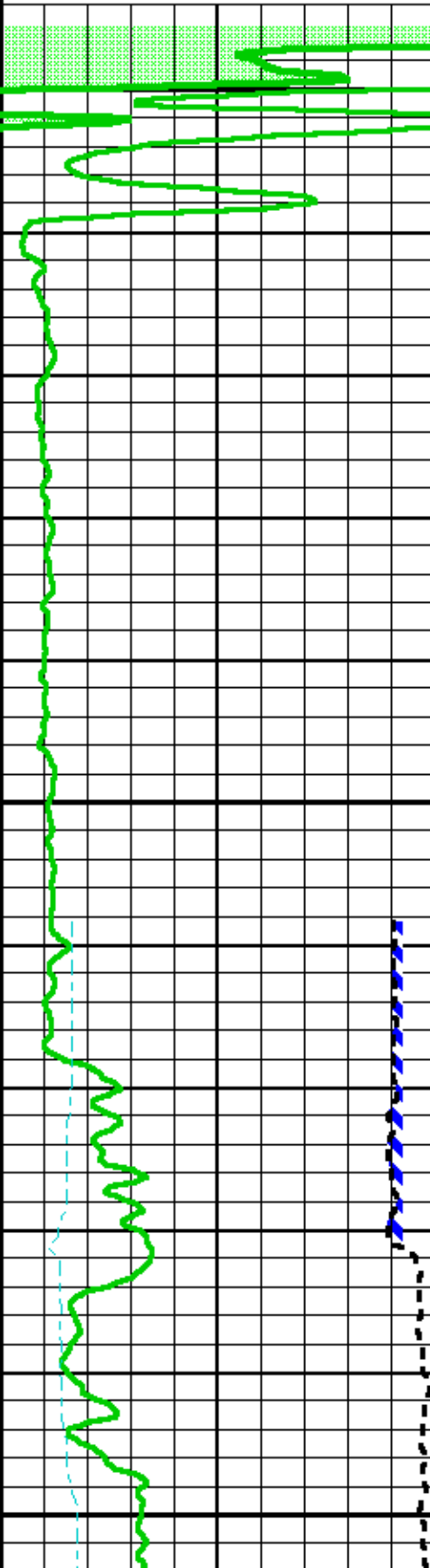
Project : NA
 User : boueram
 Presentation : BH32DK1N1D:\Documents and Settings\boueram\Desktop\tmp\aaa_u obl.pdf [1:240 Scale]
 Plot Interval : -2.2098 - 640 Meters

Data File 1 : F1 : BH32DK1N1D:\Documents and Settings\boueram\Desktop\tmp\m77wh_xaR06.xdf
 Created On : Feb 23 13:20:31 2012
 Company : a
 Well : a
 Field : a
 File Interval : -6.4008 - 5162 Meters
 Out : m77wh_x

Data File 2 : F2 : BH32DK1N1D:\Documents and Settings\boueram\Desktop\tmp\m77wh_xaR07.xdf
 Created On : Feb 23 13:26:56 2012
 Company : a
 Well : a
 Field : a
 File Interval : 0 - 370 Meters
 Out : m77wh_x



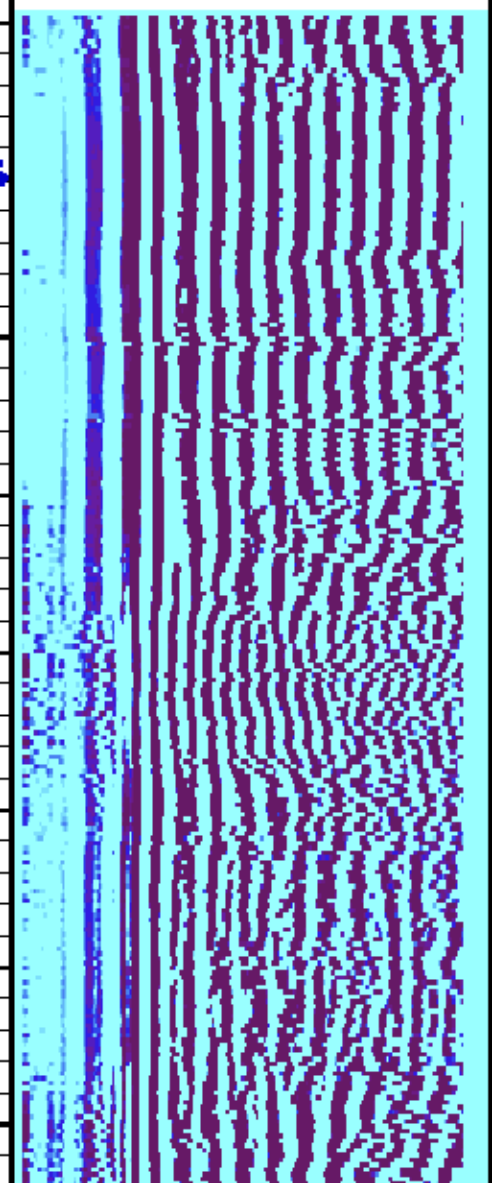
CBL Pick Time [pct.i] 250
(us)
T2R1 (NEAR) Fixed Gate Pick Time [fgpct.i]
450 250
(us)
Pred. Pick Time [ppt.i]
750 550
(us)
DIFF. TENSION [ten]
1900 -100
(lbf)

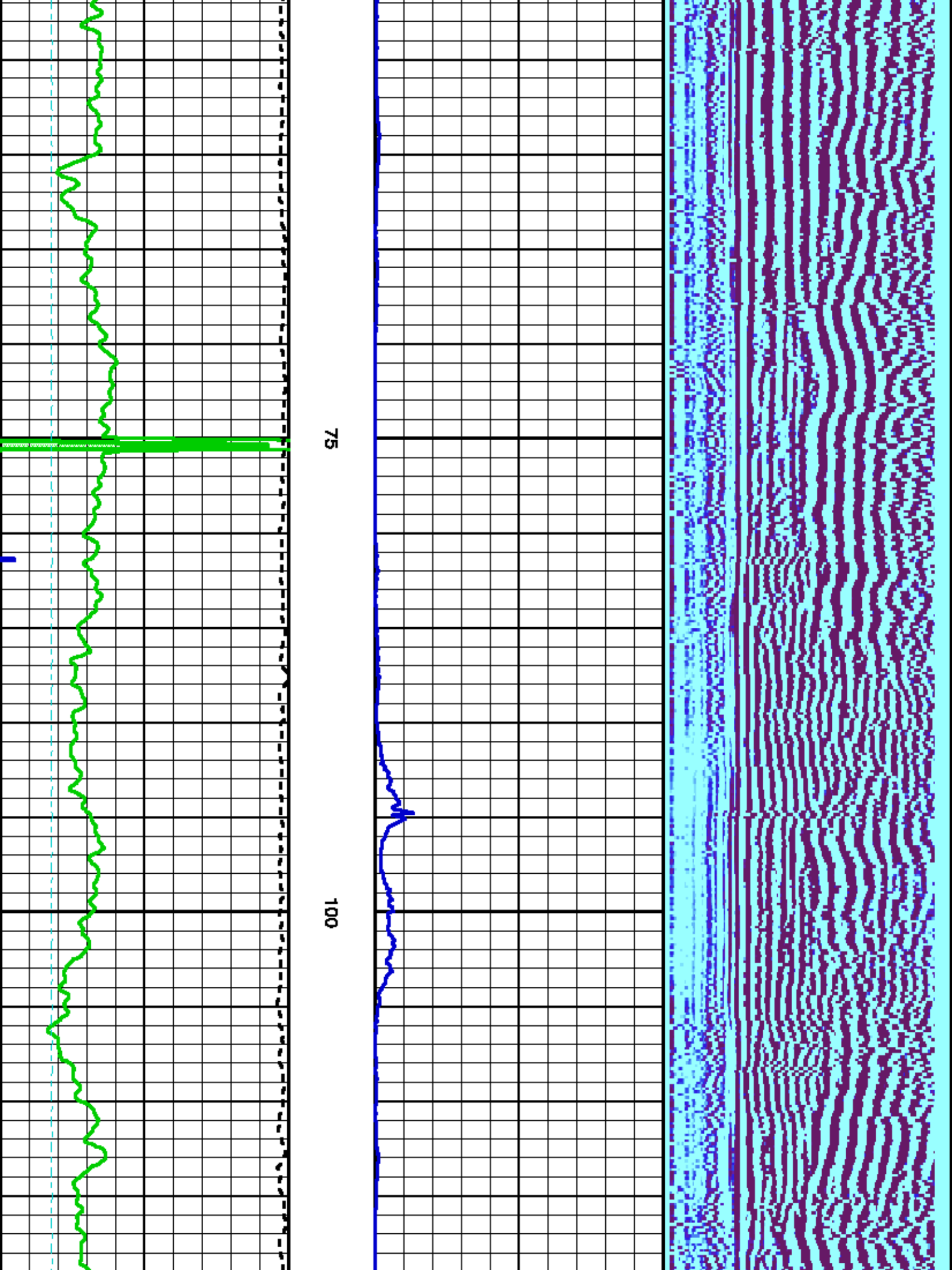


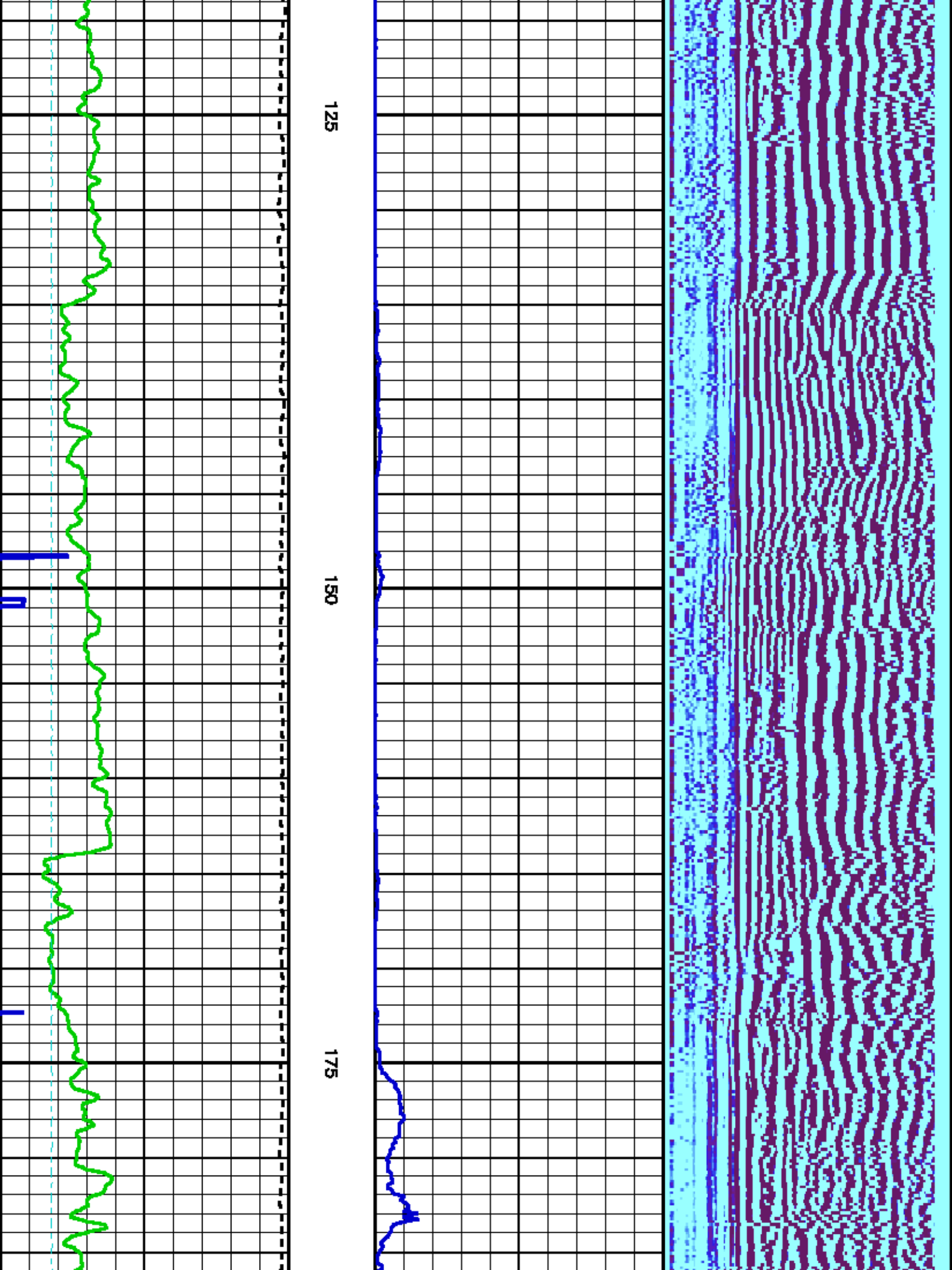
0

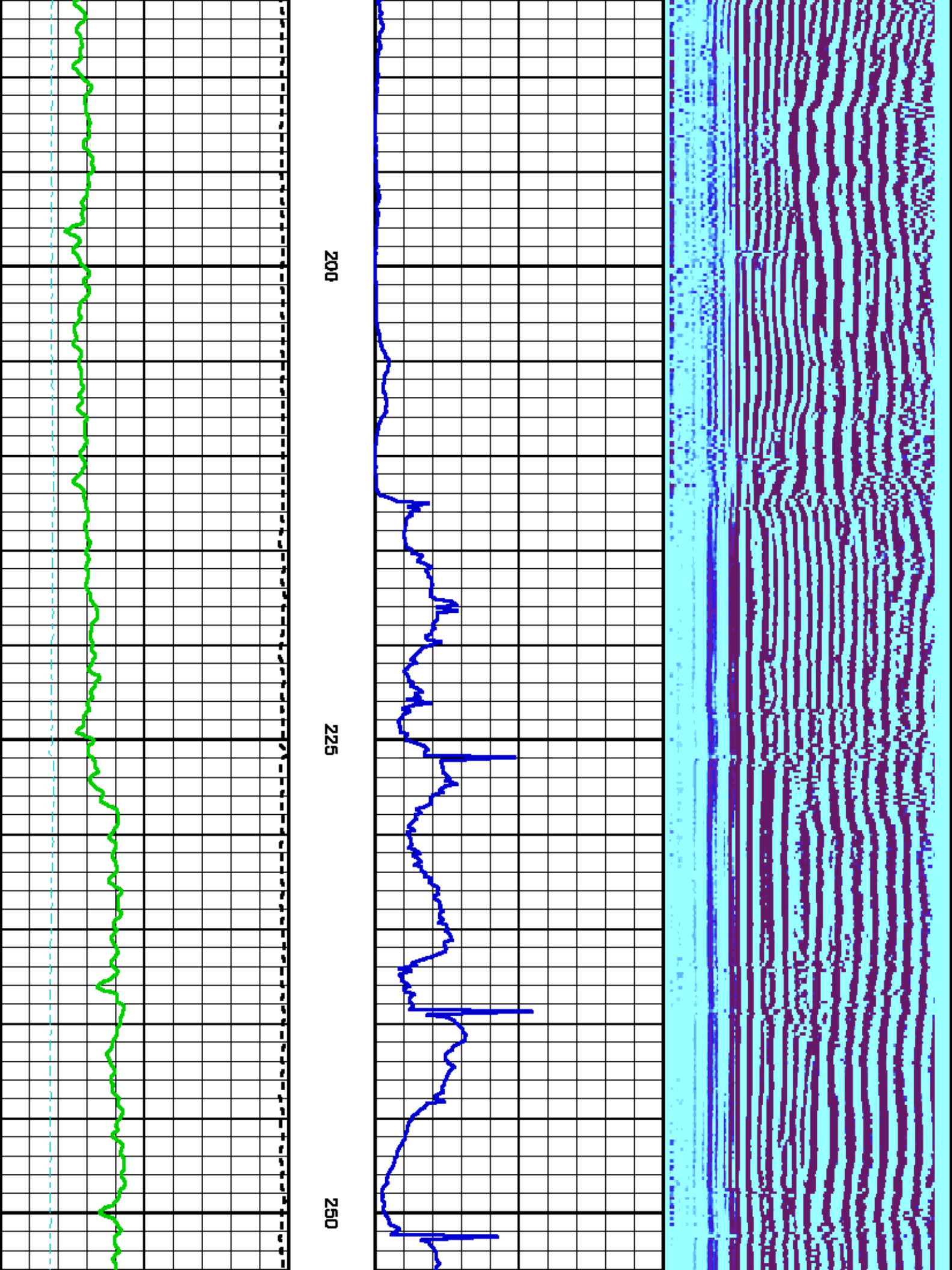
25

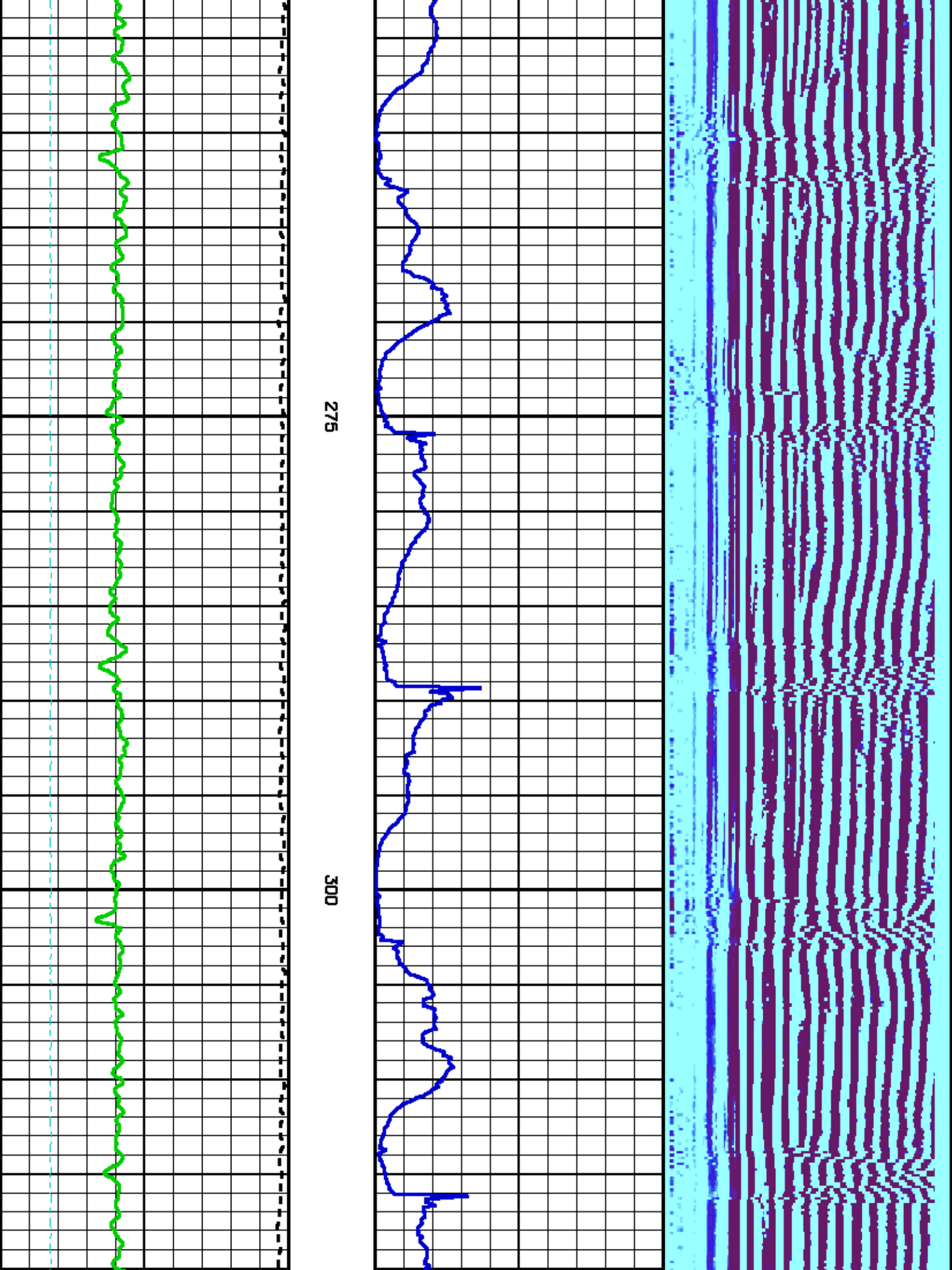
50

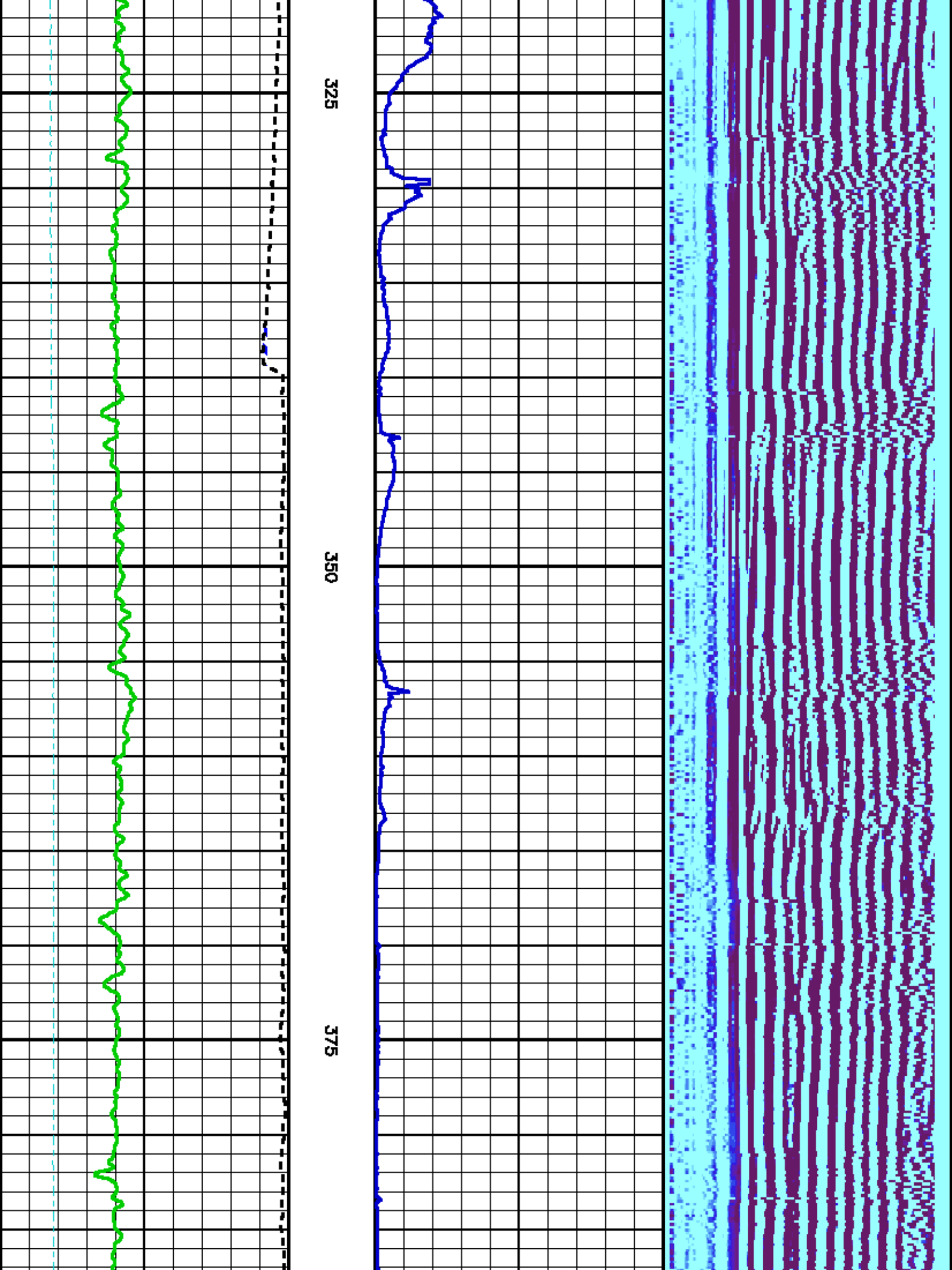








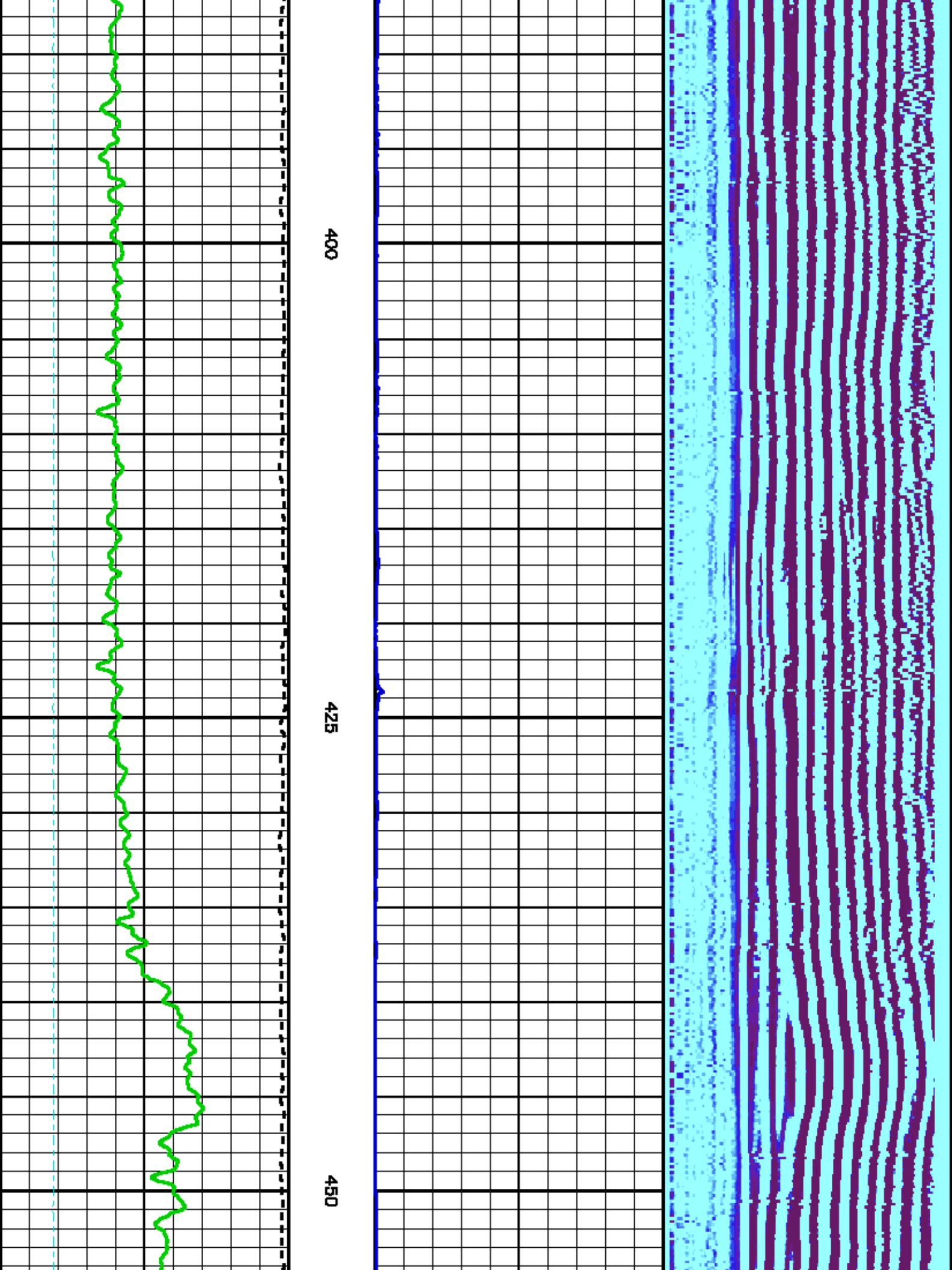


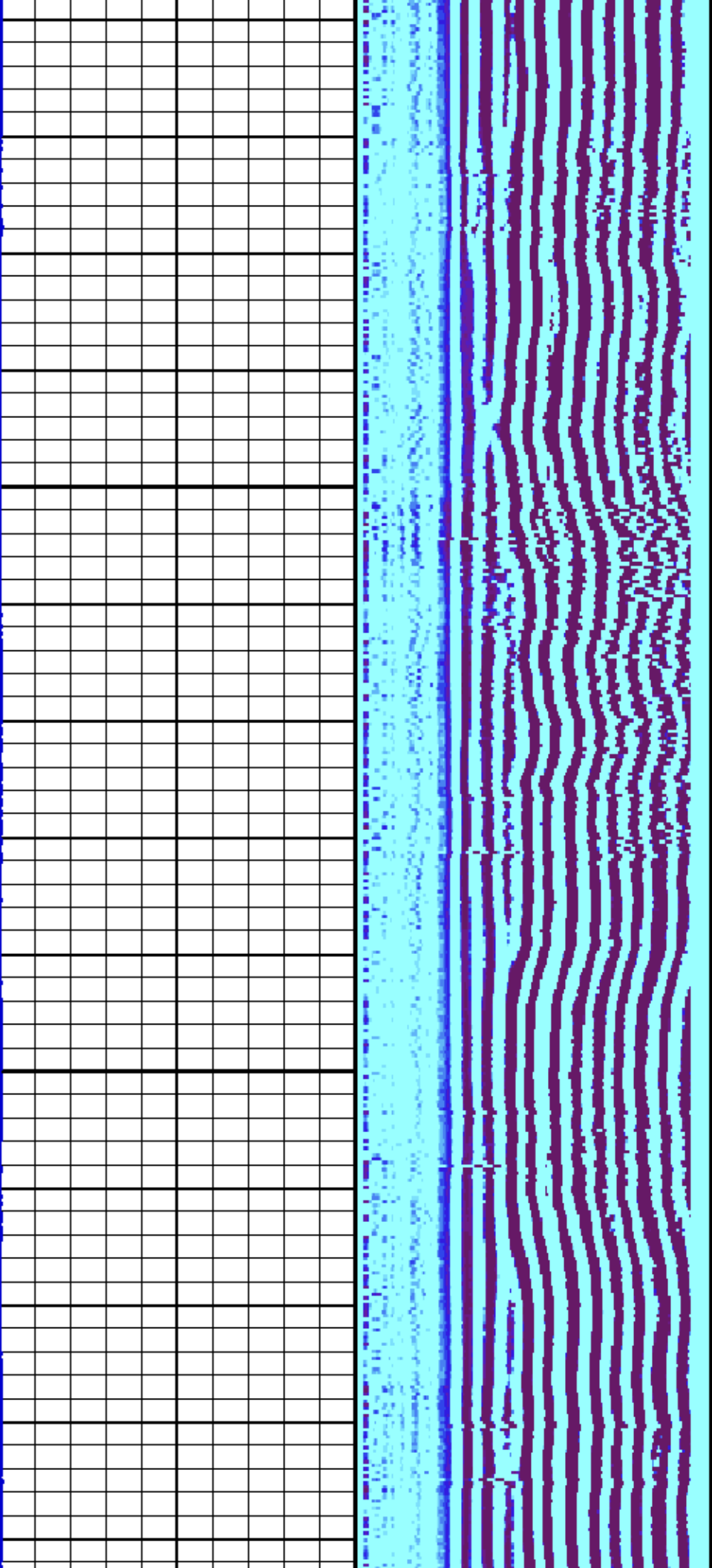


325

350

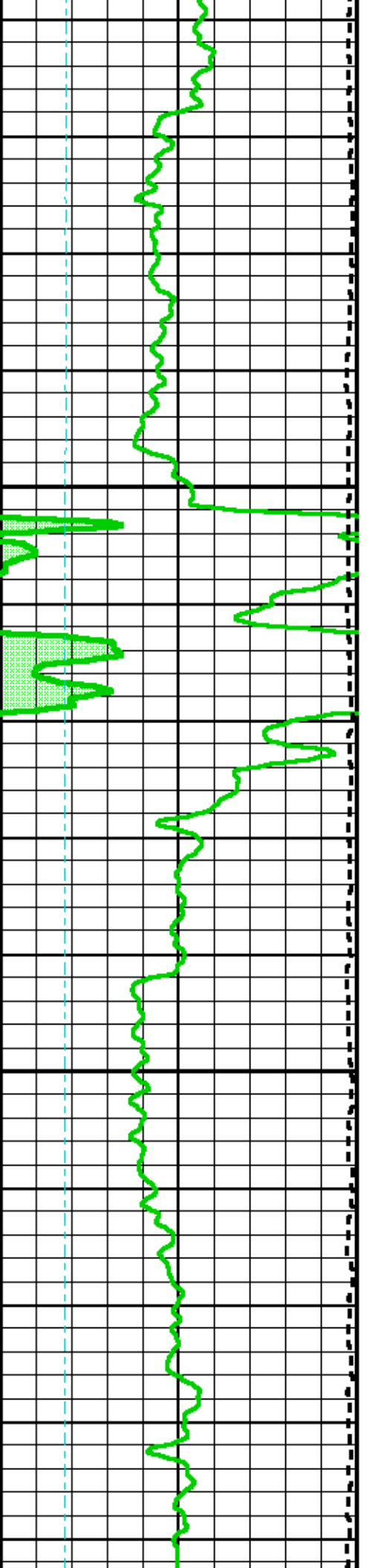
375

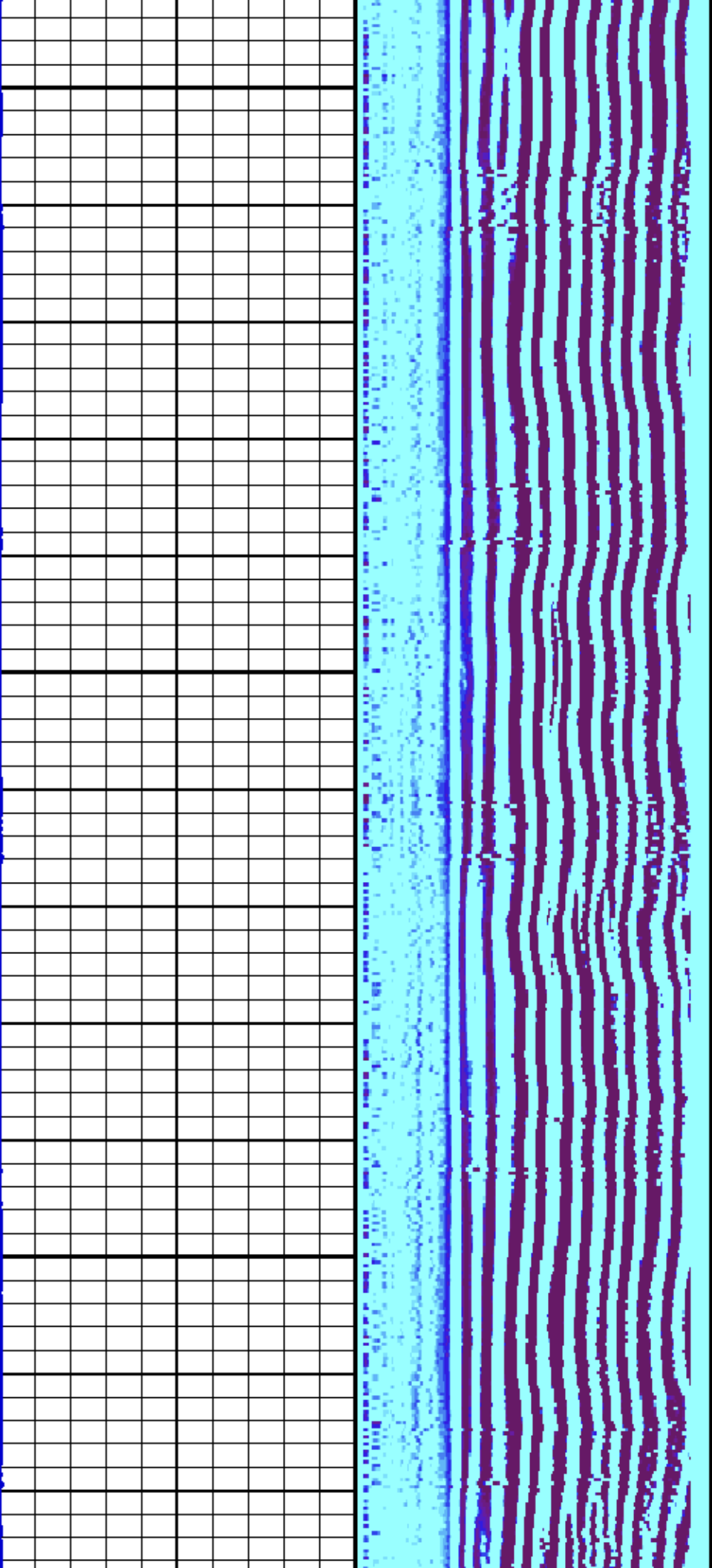




475

500

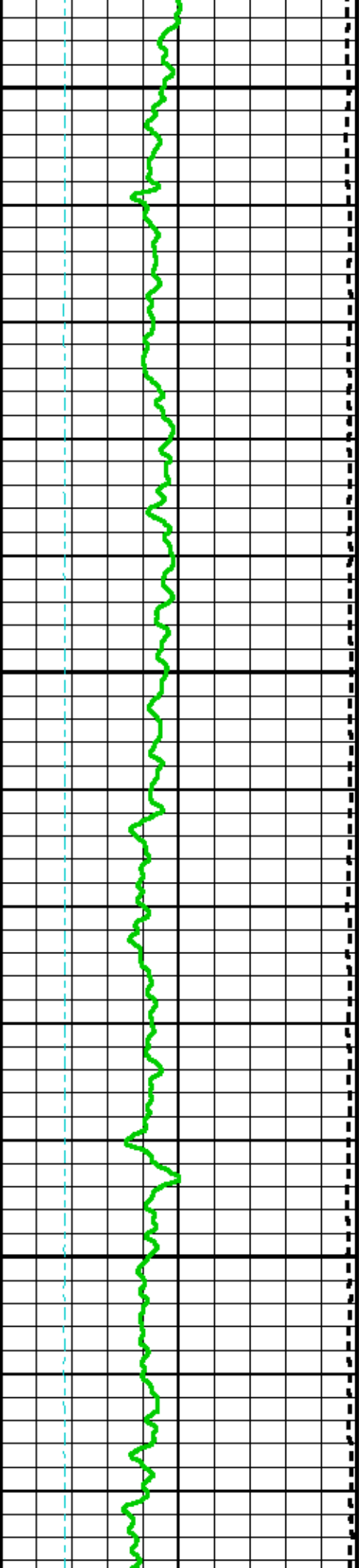


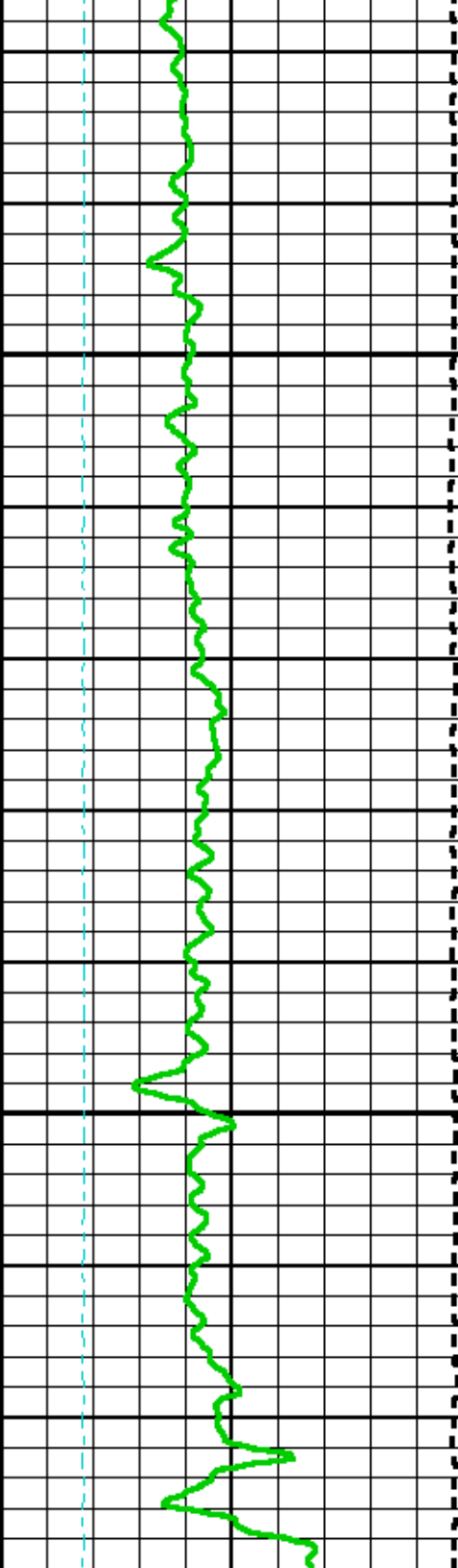


525

560

575





600

625

METERS

GR BACKUP

TOOL STICKING

GAMMA RAY [gr] 0 150

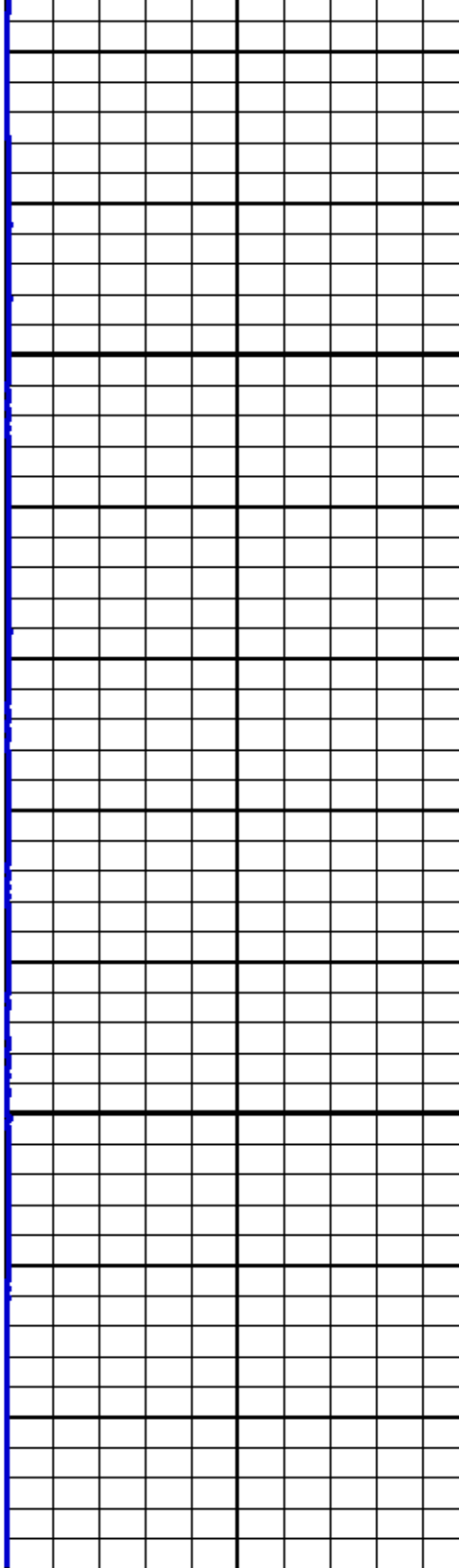
(gAPI)

SPEED [spd] 0 50

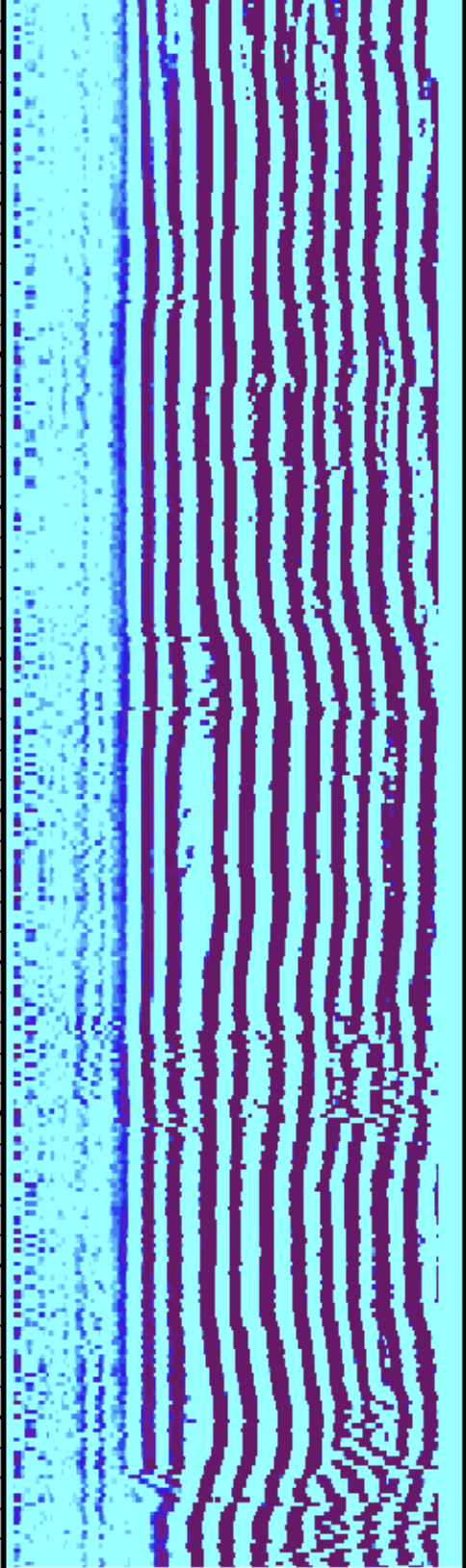
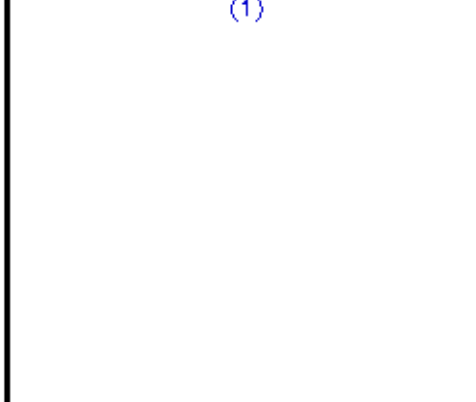
(m/min)

CBL Pick Time [sfacb.i] 450 250

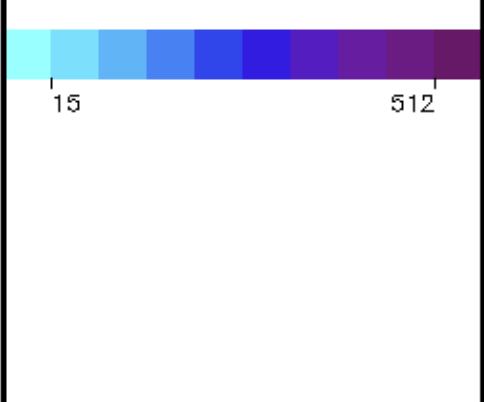
(us)

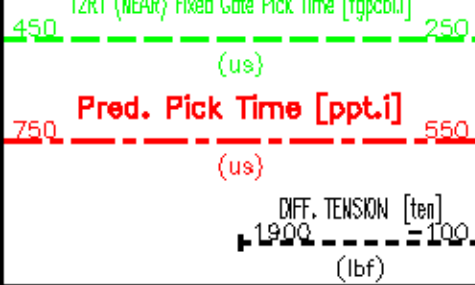


T2R1 Fixed Gate Amplitude [fgacblq] 0 100



T2-R1 WAVEFORM [wvcbq] 200 2000





ECLIPS 6.1 EC-PLOT Jan 20, 2012

Fri Feb 24 08:33:29 2012

Perplt Pplot Pdf_Cpp /main/16 Fileview 2.02

CURVE DESCRIPTION REPORT

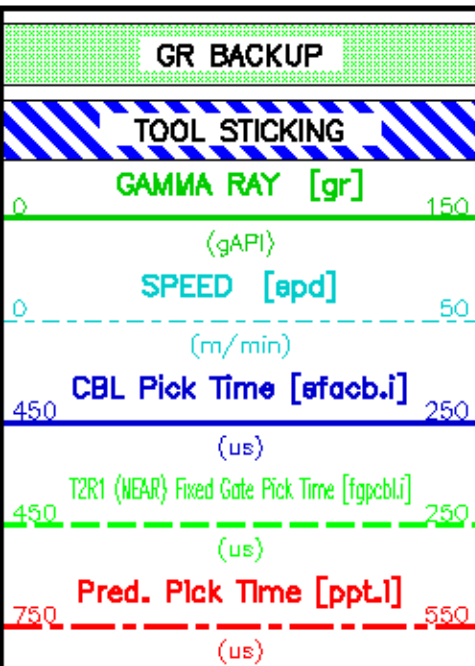
CURVE NAME	CREATION DATE	CURVE DESCRIPTION
F1:FGACBLQI	Feb 23 13:26:56 2012	FIXED GATE AMPLITUDE IN CBL
F1:FGPCBLQI	Feb 23 13:26:56 2012	FIXED GATE PICK FOR CBL TRANSMITTER RECEIVER
F1:GR	Feb 23 13:26:56 2012	GAMMA RAY
F1:PPTQI	Feb 23 13:26:56 2012	USER INPUT PREDICTED PIPE TIME
F1:SFACBQI	Feb 23 13:26:56 2012	SURFACE PICK 1ST ARRIVAL TIME, CBL SPACING
F1:SPD	Feb 23 13:26:56 2012	SPEED
F1:TEN	Feb 23 13:26:56 2012	DIFFERENTIAL TENSION
F1:WVCBQI	Feb 23 13:26:56 2012	CBL WAVEFORM

CURVE MEASURE POINT OFFSET

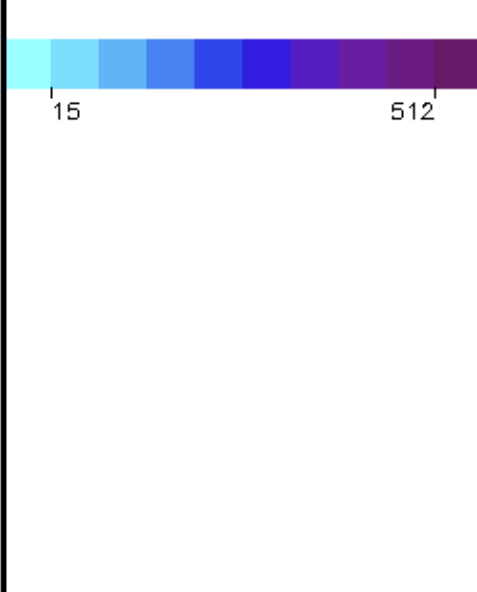
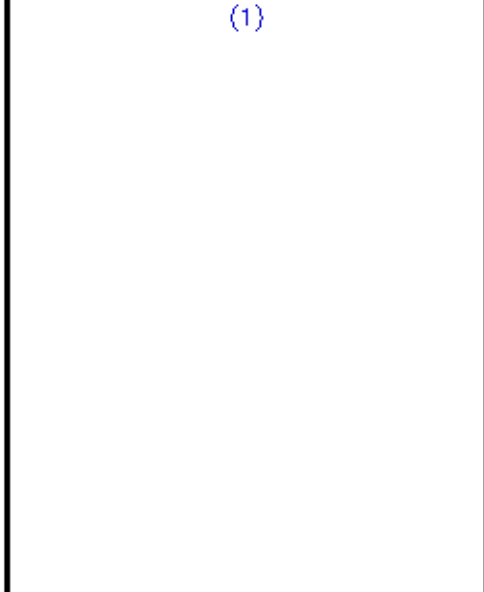
CURVE	OFFSET (m)	CURVE	OFFSET (m)	CURVE	OFFSET (m)	CURVE	OFFSET (m)
FGACBLQI	13.41	GR	31.50	SFACBQI	13.41	TEN	0.00
FGPCBLQI	13.41	PPTQI	13.41	SPD	0.00		

Project : NA
 User : boueram
 Presentation : BH52DK1N1d:\Documents and Settings\boueram\Desktop\temp\000u_0bl+m77eh_rpt.pdf [1:240 Scale]
 Plot Interval : 9.906 - 65 Meters

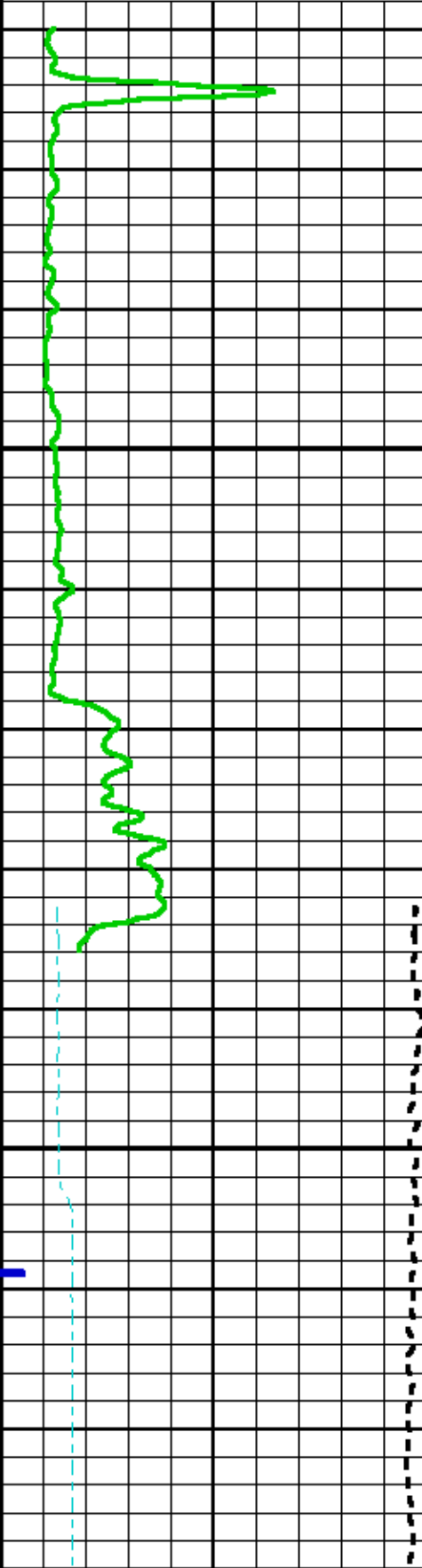
Data File 1 : F1 : BH52DK1N1d:\Documents and Settings\boueram\Desktop\temp\m77eh_xaR07.xdf
 Created On : Feb 23 13:26:56 2012
 Company : a
 Well : a
 Field : a
 File Interval : 0 - 570 Meters
 Out : m77eh_x



METERS



DIFF. TENSION [ten]
1900 -100
(lbf)



GR BACKUP

TOOL STICKING

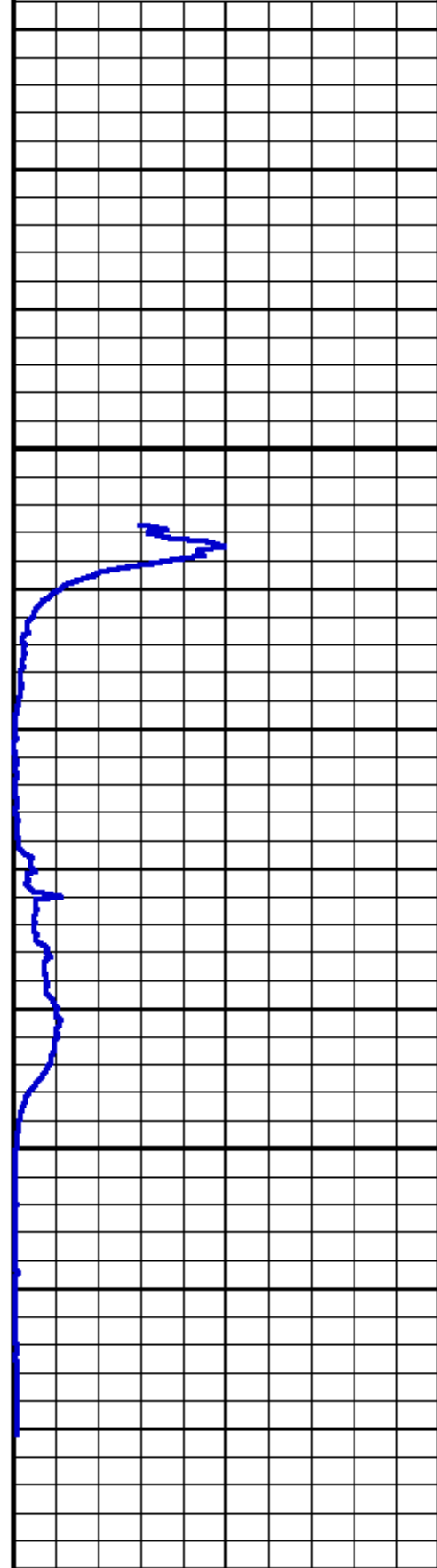
GAMMA RAY [gr]

0 150

25

50

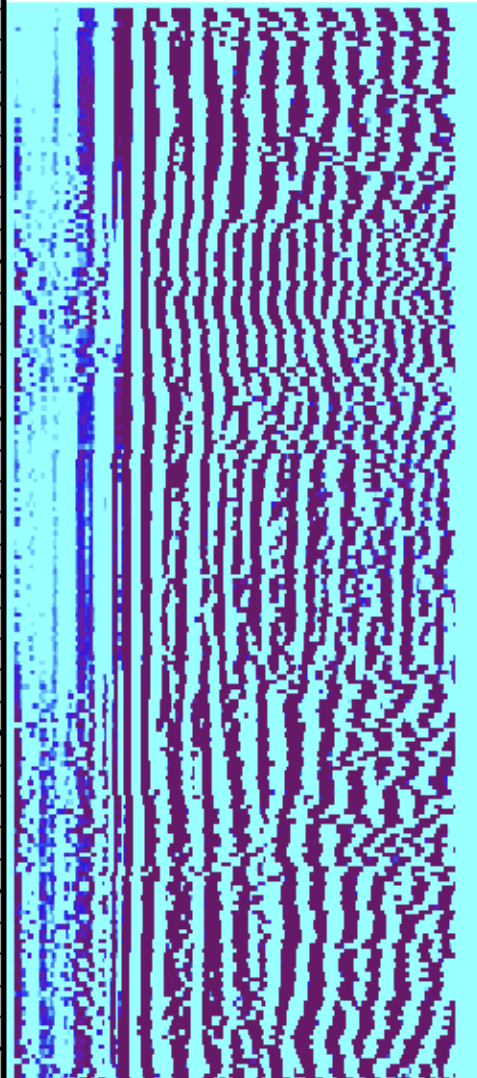
METERS



T2R1 Fixed Gate Amplitude [fgacblqj]

0 100

(1)



T2-R1 WAVEFORM [wvcbaqj]

200 2000

15 512

0	SPEED [spd] (m/min)	50
450	CBL Pick Time [sfacbl.i] (us)	250
450	T2R1 (NEAR) Fixed Gate Pick Time [fgpcbl.i] (us)	250
750	Pred. Pick Time [ppt.i] (us)	550
1900	DIFF. TENSION [ten] (lbf)	100



COMPANY	<u>HUSKY OIL OPERATIONS LIMITED</u>
WELL	<u>LITTLE BEAR N-9</u>
FIELD	<u>SLATER RIVER</u>
PROVINCE	<u>NORTHWEST TERRITORIES</u>

FILE NO:	_____
API NO:	_____

LOCATION: _____

ELEVATIONS:
KT 258 8.11

UID:
300M08500126300



SURF LOC: LAT 64° 58' 55.2"N LONG 126°

BH LOC. LSD:

LAT 64° 58' 55.2"N LONG 126° 31' 20.2"

KB 238.8 M

DF

GL 253.5 M

~~~~~12000

LICENSE:

483

DATE

13-FEB-2012