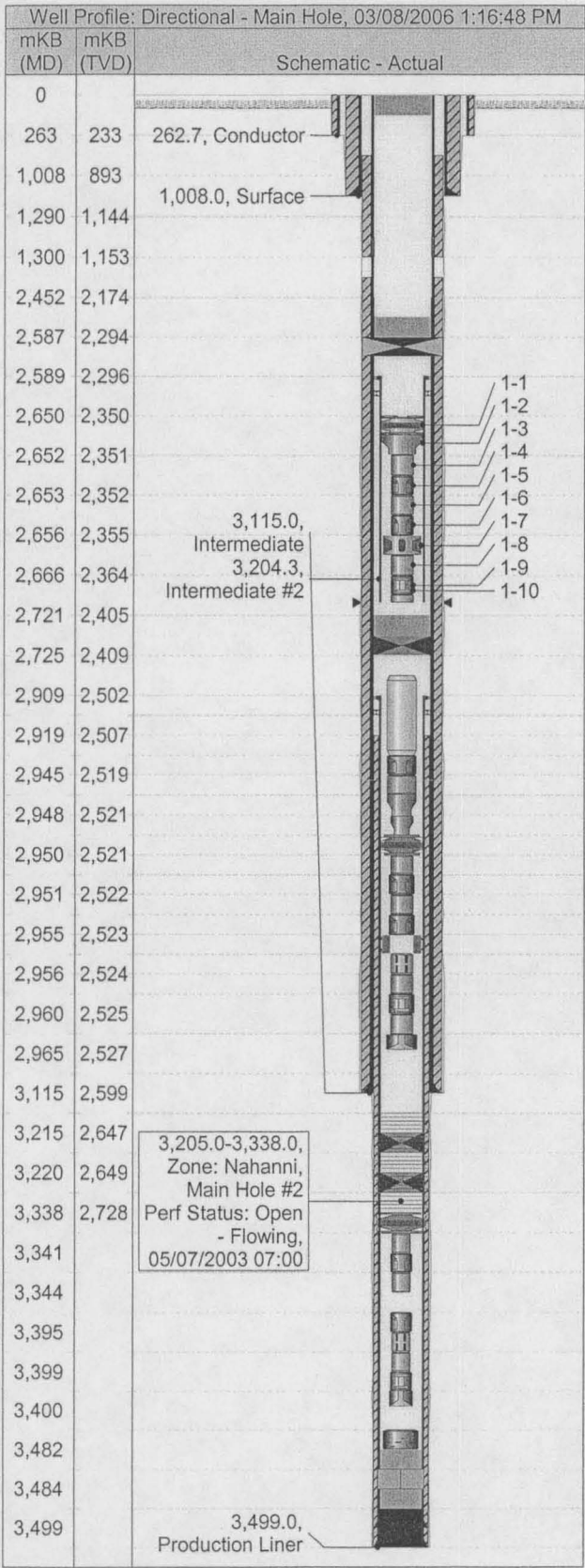


Downhole Schematic (Well Summary)  
CNRL ET AL NORTH LIARD 3P-66B

Bottom Hole Location P66-60.40-123.30/00	Surface Legal Location P66-60.40-123.30/00	License No. 4050	Working Interest (%) 50.00	CNRL Field Name FT LIARD	Province N.W.T
Well Profile Directional	Fluid Type Gas	Original KB Elevation (m) 456.07	KB-Ground Distance (m) 6.58	KB-Casing Flange Distance (m) 6.09	KB-Tubing Head Distance (m)

Directions To Well  
F/ Fort Nelson travel 27 km's North on Alaska hiway (#97) to Fort Liard hiway, (#7) turn right, travel for 176km's app. to Fort Liard access road, turn left, travel 4.5km's down hill to Fort Liard Barge Landing sign, turn right, travel 1.6km's across river to Chevron security gate (need LADD 1 on radio). Travel 29 km's to Chevron K-29 gas plant staying left, then travel 17 km's on CNRL road to Location P-66-B.



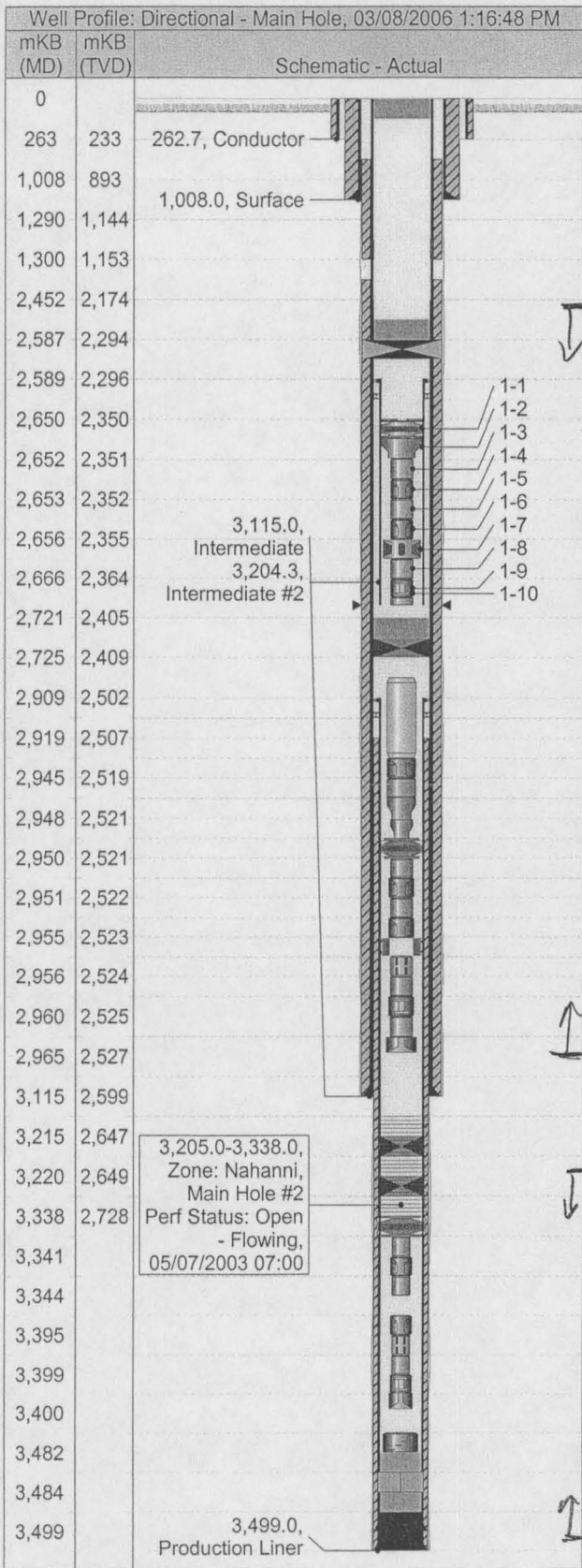
PBTD's						
Date			Depth (mKB)			
			3,338.00			
Well History (with last 3 jobs)						
General Notes						
Comment						
See attachment on trip gas readings.						
Casing Strings						
Casing Description		OD (mm)	Wt (kg/m)	Grade	Set Depth (mKB)	
Conductor		508.0	139.887	K-55	262.66	
Surface		339.7	101.195	K-55	1,008.00	
Intermediate		244.5	69.944	L-80	3,115.00	
Intermediate #2		177.8	38.692	L-80	3,204.30	
Production Liner		177.8	38.692	L-80	3,499.00	
Perforations						
Zone		Top (mKB)	Btm (mKB)	Current Status		
Nahanni, Main Hole #2		3,205.00	3,338.00	Open - Flowing		
Tubing Strings						
Packer Assembly set at 3,158.84mKB on 05/13/2003 20:00						
Tubing Description		OD (mm)	Wt (kg/m)	String Grade	Set Depth (mKB)	
Packer Assembly		88.9	13.691	L-80	3,158.84	
Comment						
Item No.	Jts	Item Description	OD (mm)	Len (m)	Top (mKB)	Btm (mKB)
1-1	1	Halliburton, INCOLOY 925 Perm/Drillable packer	159.0	1.08	2,650.07	2,651.15
1-2	1	Cross Over	159.0	0.33	2,651.15	2,651.48
1-3	1	Tubing, Pup, Incoloy 925	88.9	1.03	2,651.48	2,652.51
1-4	1	Otis "R" nipple 65.07mm, Incoloy 925, 13 Chrm PIP	88.9	0.39	2,652.51	2,652.90
1-5	1	Tubing Pup	88.9	3.09	2,652.90	2,655.99
1-6	1	Otis "R" nip c/w L80 PIP, 65.07mm	88.9	0.42	2,655.99	2,656.41
1-7	1	Centralizer	150.0	0.29	2,656.41	2,656.70
1-8	1	Tubing	88.9	9.62	2,656.70	2,666.32
1-9	1	Otis "RN" nipple, 65.07mm X 59.01mm NoGo	89.0	0.56	2,666.32	2,666.88
1-10	51	Tubing	88.9	491.81	2,666.88	3,158.69
1-11	1	Wireline Guide	88.9	0.15	3,158.69	3,158.84
114mm Final String set at 2,651.15mKB on 05/16/2003 01:30						
Tubing Description		OD (mm)	Wt (kg/m)	String Grade	Set Depth (mKB)	
114mm Final String					2,651.15	
Comment						
Item No.	Jts	Item Description	OD (mm)	Len (m)	Top (mKB)	Btm (mKB)
Wellheads						
Type			Make			
ABB Vetco			CWCT			
ABB Vetco			CWCT			
Other In Hole						
Description		Run Date	Pull Date	Top (mKB)	Btm (mKB)	
Cement Cap @ surface		03/04/2006		0.00	10.00	



Downhole Schematic (Well Summary)  
CNRL ET AL NORTH LIARD 3P-66B

Bottom Hole Location	Surface Legal Location	License No.	Working Interest (%)	CNRL Field Name	Province
P66-60-123.30/00	P66-60.40-123.30/00	4050	50.00	FT LIARD	N.W.T
Well Profile	Fluid Type	Original KB Elevation (m)	KB-Ground Distance (m)	KB-Casing Flange Distance (m)	KB-Tubing Head Distance (m)
Directional	Gas	456.07	6.58	6.09	

Directions To Well  
F/ Fort Nelson travel 27 km's North on Alaska hiway (#97) to Fort Liard hiway, (#7) turn right, travel for 176km's app. to Fort Liard access road, turn left, travel 4.5km's down hill to Fort Liard Barge Landing sign, turn right, travel 1.6km's across river to Chevron security gate (need LADD 1 on radio). Travel 29 km's to Chevron K-29 gas plant staying left, then travel 17 km's on CNRL road to Location P-66-B.



PBTD's				
Well History (with last 3 jobs)				
Other In Hole				
Description	Run Date	Pull Date	Top (mKB)	Btm (mKB)
Cement Cap on BP	03/04/2006		2,579.30	2,587.30
Bridge Plug - Permanent	03/03/2006		2,587.30	2,587.60
Cement Cap on BP	04/15/2003		2,720.53	2,724.73
Schlumberger HM-10(10 K) Permanent Bridge Plug	04/15/2003		2,724.73	2,725.30
Tbg stump w/Cement plug(est 220.95 m)			2,728.50	2,944.29
Otis "X" Nipple x/96.85 mm profile(NS-CT)			2,944.29	2,944.60
114.3 mm L-80 NS-CT Pup Jt(18.75 kg/m)			2,944.60	2,947.56
x/o Swedge 114.3 NS-CT box - 88.9 mm NS-CT Pin			2,947.56	2,948.33
Guiberson Premium Latch Assy w/extra seal(HTE)			2,948.33	2,948.80
Guiberson Magnum Perm Pkr(HTE)			2,948.80	2,949.74
88.9 mm NS-CT Incoloy 925 Pup Jt 13.69 kg/m(1.24)			2,949.74	2,950.98
Otis Incoloy 925 "X" Nipple w/69.85 mm prof			2,950.98	2,951.32
88.9 mm L-80 NS-CT Pup Jt 13.69 kg/m(2.95)			2,951.32	2,954.27
Otis "X" Nipple w/69.85 mm Prof(ns-ct bx-eue pin)			2,954.27	2,954.61
NS-CT L-80 Casing Centralizer			2,954.61	2,954.89
88.9 mm L-80 Perforated Pup Jt(1.22)			2,954.89	2,956.11
88.9 mm L-80 Pup Jt			2,956.11	2,959.19
Otis "XN" Nipple(69.85 prof & 66.93 No-Go)			2,959.19	2,959.62
88.9 mm L-80 Pup Jts(3.10, 1.89)			2,959.62	2,964.61
W/L Re-Entry Guide			2,964.61	2,964.76
10 K Permanent Bridge Plug( no info avail)			3,214.80	3,215.25
10 K Permanent Bridge Plug(no info available)			3,219.80	3,220.25
Halliburton Incoloy 925 "BWB" milled out pkr			3,338.00	3,339.65
73 mm NS-CT Incoloy 925 9.67 kg/m pup jt			3,339.65	3,340.71
73 mm Otis "X" Nipple Incoloy 925 w/58.75 Prof			3,340.71	3,341.01
73 mm NS-CT Incoloy 925 Pup Jt			3,341.01	3,344.00
73 mm Otis "R" Nipple w/55.8 mm(ns-ct bx-eue pin)			3,394.40	3,394.71
73 mm Perforated Pup Jt(L-80)			3,394.71	3,395.95
73 mm L-80 Pup Jt			3,395.95	3,398.99
73 mm Otis "RN" Nipple(55.58 prof & 51.05 No-Go)			3,398.99	3,399.58
73 mm W/L Re-Entry Guide			3,399.58	3,399.68
Dropped off TCP Guns			3,470.00	3,482.00



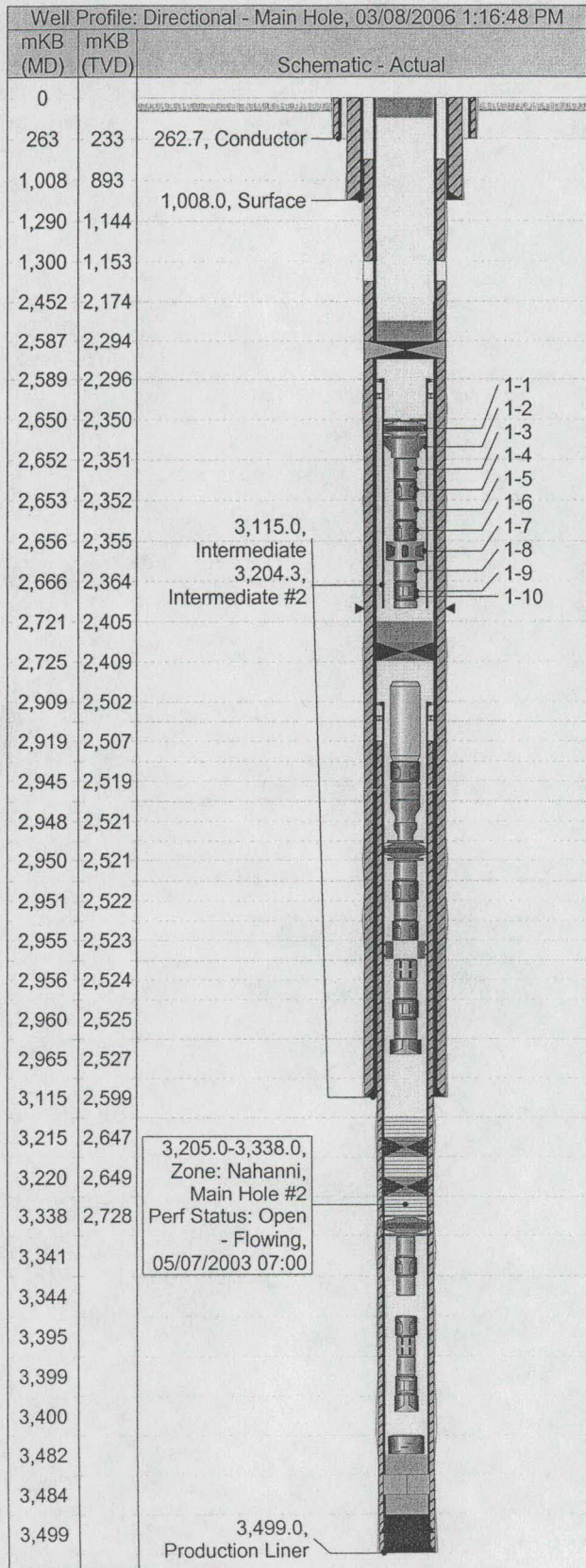
# Downhole Schematic (Well Summary)

**CNRL ET AL NORTH LIARD 3P-66B**

Bottom Location P66-60.40-123.30/00	Surface Legal Location P66-60.40-123.30/00	License No. 4050	Working Interest (%) 50.00	CNRL Field Name FT LIARD	Province N.W.T
Well Profile Directional	Fluid Type Gas	Original KB Elevation (m) 456.07	KB-Ground Distance (m) 6.58	KB-Casing Flange Distance (m) 6.09	KB-Tubing Head Distance (m)

## Directions To Well

F/ Fort Nelson travel 27 km's North on Alaska hiway (#97) to Fort Liard hiway, (#7) turn right, travel for 176km's app. to Fort Liard access road, turn left, travel 4.5km's down hill to Fort Liard Barge Landing sign, turn right, travel 1.6km's across river to Chevron security gate (need LADD 1 on radio). Travel 29 km's to Chevron K-29 gas plant staying left, then travel 17 km's on CNRL road to Location P-66-B.



## PBTD's

## Well History (with last 3 jobs)

### Other In Hole

Description	Run Date	Pull Date	Top (mKB)	Btm (mKB)
PBTD			3,482.00	3,499.00

### Jobs

#### Abandonment, 02/01/2006 08:00

Primary Job Type	AFE Number	Total AFE+Sup	Total Cost	WI (%)
Abandonment	AB061002D372	918,525.00	463,980.91	50.00

### Job Contacts

Title	Name	Company
Superintendent	Sieg Mueller	CNRL
Site Supervisor	Ken Dort	Decca

### Rigs

Rig No.	Contractor
2	Grizzly Well Services

### Daily Operations

Start Date	Daily Ops Summ
02/01/2006	Start to clear road for rig.
02/02/2006	Mobilized hoe. Graded to P66 lease.
02/03/2006	Mobilized hoe. Graded to P66 lease.
02/04/2006	Mobilized cate to first hill to tow trucks. Built snow fill on road. Hoe moved overflows off road.
02/05/2006	Grader plowed snow off road. Widened road. Cleaned snow off lease. Hoe moved overflows off road.
02/06/2006	Trent (Facilities decommissioning) moved on site. Clear snow away from buildings.
02/07/2006	Tow trucks up hill. Held safety meeting with Trent for decommissioning
02/08/2006	Bobcat and grader on standby to move snow.
02/09/2006	Widen out road at corners. Move snow on lease.
02/10/2006	Clear overflows off road
02/11/2006	tow a tank truck off hill.
02/12/2006	Grader bladed off ice on road.
02/13/2006	Waiting on rig. Grader graded ice off road at km 10. Spread gravel on corner.
02/14/2006	Grader plowed snow off roads. Hauled out equipment. Rig should arrive Feb 18 or 19
02/15/2006	Take samples fro reclamation.
02/16/2006	plowed snow off road.
02/17/2006	Moved rig support EQU from FSJ to Fort Nelson B.C
02/18/2006	Moved trucks & EQU onto loc. Unloaded and released tractors.
02/19/2006	Spotted support EQU. Lease tight do to tear out of old facility in progress buildings sill around W/H.
02/20/2006	Rig in transit from FSJ. Checked pressure on Well Tubing @ 0 Casing @ 3169 Kpa. Bubble test performed no bubbles present.
02/21/2006	Rig had eng problems in Fort Nelson and will be delayed. Old facility buildings were hauled off loc.
02/22/2006	Spotted and rigged in test vessel. Moved in and spotted Grizzly rig #2 and support EQU.
02/23/2006	Rigged in rig and associated EQU. NEB inspection. CNRL & sub contractors are in compliance with government regulations.
02/24/2006	Removed W/H & installed BOP'S. Rigged in tubing handling EQU C/W tongs & lay down unit.
02/25/2006	Pulled tubing free of prem Packer. Pulled & laid out 3 joints of 114.3 mm tubing.



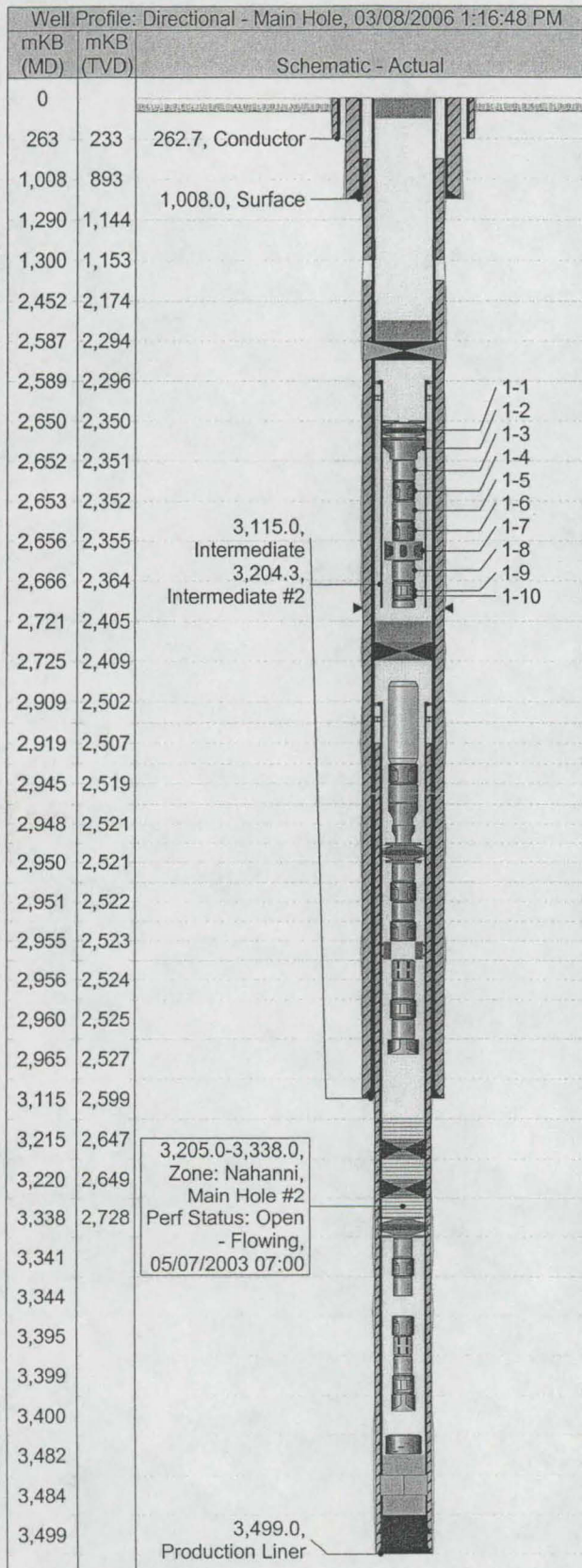
## Downhole Schematic (Well Summary)

### CNRL ET AL NORTH LIARD 3P-66B

Bottom Location P66-60.40-123.30/00	Surface Legal Location P66-60.40-123.30/00	License No. 4050	Working Interest (%) 50.00	CNRL Field Name FT LIARD	Province N.W.T
Well Profile Directional	Fluid Type Gas	Original KB Elevation (m) 456.07	KB-Ground Distance (m) 6.58	KB-Casing Flange Distance (m) 6.09	KB-Tubing Head Distance (m)

#### Directions To Well

F/ Fort Nelson travel 27 km's North on Alaska hiway (#97) to Fort Liard hiway, (#7) turn right, travel for 176km's app. to Fort Liard access road, turn left, travel 4.5km's down hill to Fort Liard Barge Landing sign, turn right, travel 1.6km's across river to Chevron security gate (need LADD 1 on radio). Travel 29 km's to Chevron K-29 gas plant staying left, then travel 17 km's on CNRL road to Location P-66-B.



#### PBTD's

#### Well History (with last 3 jobs)

##### Daily Operations

Start Date	Daily Ops Summ
02/26/2006	Rev cric well with 5.00 M3 fresh water. POOH sideways with 150 joints of 114.3 mm NSCT tubing.
02/27/2006	POOH with remaining 114.3 mm tubing. R/D and released tubing EQU. Prepared to RIH with bridge plugs.
02/28/2006	RIH on E- Line with gauge ring & junk Basket & could not get into 177.8 mm liner @ 2,590.00 Mkb. RIH on E - Line with 177.8 mm perm bridge plug & had no success getting into liner.
03/01/2006	Waiting on E- Line to replace Precision Unit that left Loc. With the use of a track hoe exposed & preped pipe lines on loc for abandonment.
03/02/2006	RIH on E-Line with 177.8 mm Perm bridge plug C/W tapered cone. Tagged @ 2,590.00 Mkb worked string multiple times with no success entering liner.
03/03/2006	RIH on E-Line with 95.00 mm dump bailer & could not enter the 177.8 mm liner @ 2,590.00 mKB. Sieg talked to the NEB on alternative abandonment procedure & got approval. Pressure tested casing to 7 Mpa for 15 min test held 100%. RIH & set perm 244.5 mm drillable plug @ 2,587.00 mKB. P tested plug @ 7,000 Kpa for 15 min.
03/04/2006	RIH on E-Line and dumped 8.00 linear m of cement on perm bridge plug @ 2,587.00 mKB. R/D rig & support EQU. Put a 10.00 linear Meter cement cap @ surface in the 244.5 mm production casing.
03/05/2006	Moved rig & support EQU off loc. Cut off and capped pipe line on loc. Dug out around W/H for capping operations.
03/06/2006	Jack hammered cement from around casing. Cut and capped the well with 20 mm plate steel all caps were double welded. This will be the last report for the service rig operation for this abandonment.
03/07/2006	The CCS trucks came today in the late morning hauled 8 loads looks like about half of the pile is now loaded trucks will be back in the morning. Cat worked with the hoe braking up the encapsulated invert making it easier for the hoe to load. Cat was also used to tow trucks off the lease at the first steep hill.

#### Jobs

##### Suspend Wellbore, 01/11/2004 10:30

Primary Job Type	AFE Number	Total AFE+Sup	Total Cost	WI (%)
Suspend Wellbore	K04P1093D323	56,105.00	47,918.00	

#### Job Contacts

Title	Name	Company
Superintendent	George Shomody	CNRL
Wellsite Supervisor	Mike Tunke	ML Tunke Consulting LTD

#### Rigs

Rig No.	Contractor

#### Daily Operations

Start Date	Daily Ops Summ
01/11/2004	Moved in Slickline, Ran SG, Ran Nipple Brush, Ran "R" Otis Plug, Ran, another Otis "R" plug, Beld off tbg to 0 kPa, Filled w/ 20 m3 fresh and 1 m3 deisel and P.T to 14000 kPa for 15 min, held good.

##### Completion of re-entry, 05/09/2003 07:00

Primary Job Type	AFE Number	Total AFE+Sup	Total Cost	WI (%)
Completion of re-entry	C03L1045D301	1,294,800.00	606,599.24	

#### Job Contacts

Title	Name	Company
Superintendent	Rick Meyers	CNRL