

REMARKS:

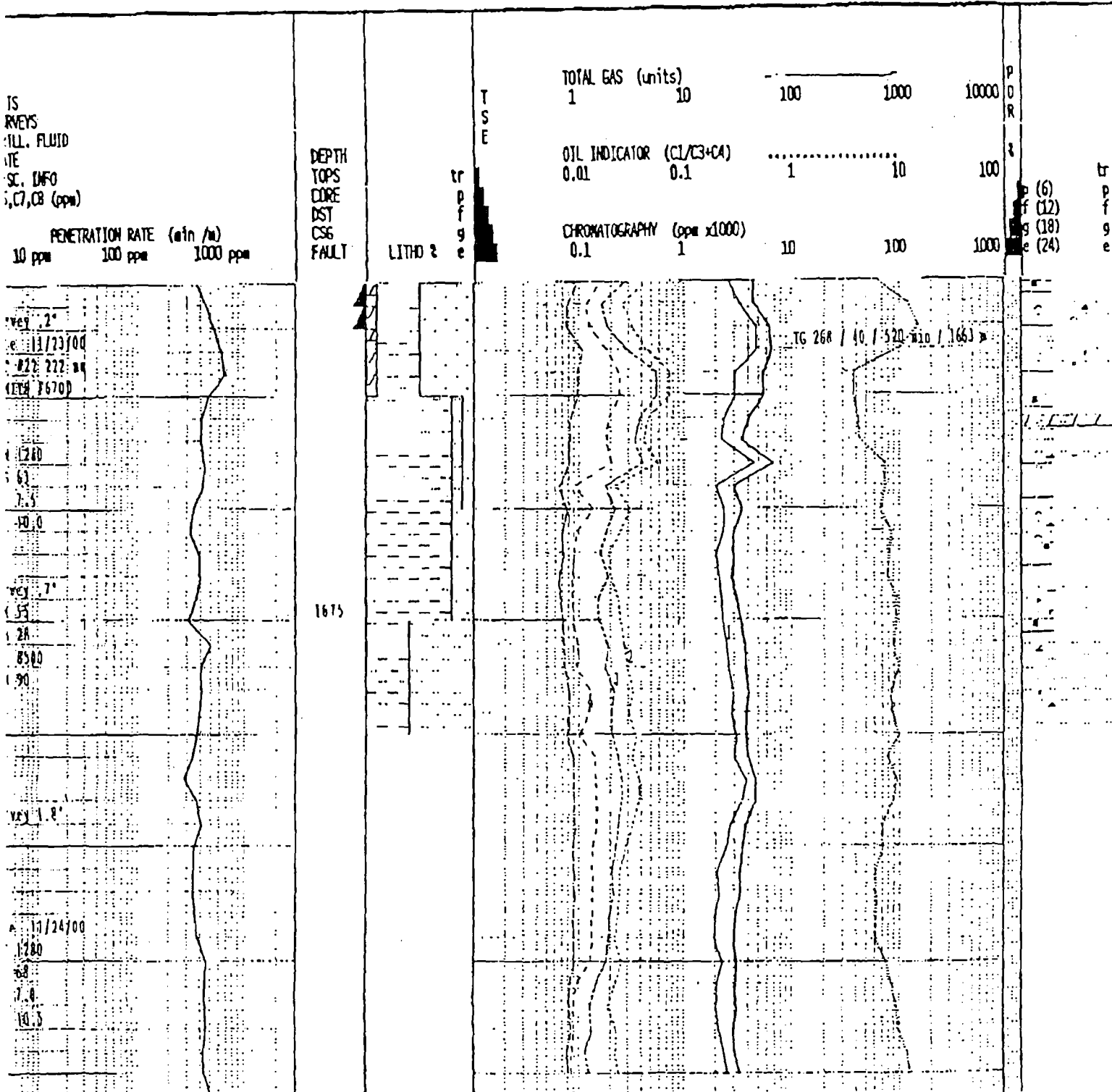
SAMPLE QUALITY POOR - FAIR; ABNT CAVINGS (10 - 50%)

INSTRUMENTATION:

TG-CFD, MTI #16, GPMC

Para et al Mount Coty I-02 (mudlog)

ALL LITHOLOGIC SYMBOLS ARE CAN-STRAT COMPATIBLE



Curve Track 1

ROP (min/m)  
Gas (units)

Depth

Porosity Type

Porosity

Porosity

Porosity

Porosity

Porosity

Porosity

Porosity

Porosity

Porosity

Porosity

Porosity

Porosity

Porosity

Porosity

Porosity

Porosity

Porosity

Porosity

Porosity

Porosity

Porosity

Porosity

Porosity

Porosity

Porosity

Porosity

Porosity

Porosity

Porosity

Porosity

Porosity

Porosity

Porosity

Porosity

Porosity

Porosity

Porosity

Porosity

Porosity

Porosity

Porosity

Porosity

Porosity

Porosity

Porosity

Porosity

Porosity

Porosity

Porosity

Porosity

Porosity

Porosity

Porosity

Porosity

Porosity

Porosity

Porosity

Porosity

Porosity

Porosity

Porosity

Porosity

Porosity

Porosity

Porosity

Porosity

Porosity

Porosity

Porosity

Porosity

Porosity

Porosity

Porosity

Porosity

Porosity

Porosity

Porosity

Porosity

Porosity

Porosity

Porosity

Porosity

Porosity

Porosity

Porosity

Porosity

Uthology

Grain Size

Geological Descriptions

ROP (min/m) 20  
Gas (units) 500

FOB: 28  
RPM: 25  
SPM: 105  
PP: 8200

20:00hrs 22-Nov-00  
Tripping@1663 m

Dens: 1280  
Vis: 68  
WL: 7.0  
PH: 10.5

FOB: 28  
RPM: 65  
SPM: 80  
PP: 8200

ROP (min/m) 20  
Gas (units) 500

grdg-lyst, vary sity in mnr pt occy grdg-arg sltst strg. loc mm, vary carb-bit lp, sl dolc-calc ip, tr pyr, CLYST m brn-gy, sft, tr anhydc-dolc, mot-strk, vary bit lp, sl-mod bentic ip, tr slt nods, loc v pyrc, mnr blk coaly sh grdg-bit coal, mnr qtzs arg vary sdy tt sltst strg.

1660-1665 SS, wi intbd CLYST & SH; SS aa ip bcmg Incrly arg lp grdg-mnr wacke, vf-f gr ip, sl-mod slty, qtzaren aa, m w srt, ang-srd-mnr rd, pred cln, vary disagg ip, p-m lnd, cmbly-sl frt, incr mnr-lcc com qtz ovghs, decr mnr sp kaol-ill, mnr-com var p-tr str fr por, shows aa; incr CLYST & decr SH aa.

1665-1670 SH, dk gy-v dk brn, mnr blk, pred vary frm, loc sl sft-hd, plty-sb blk, brit ip, fis-sb fis, comy sm & fnty mm, SS strg aa, sl-mod slty lp, comy sl sb wxy, mnr pyr nods, sl bit, tr mry bit clyst strg.

1670-1675 SH, wi intbd SS; SH v dk brn, frm-sft, sb plty-sb blk, sb fis, v fnty mm, sl-v shy grdg-v arg sltst lp, sl-mod dolc, qtzs, v hd, dns, sl-mod arg, sl sdy, mod-v dolc grdg-sity dol strg ip, tt, n/s.

1675-1685 SH, dk gy-v dk brn, mnr blk, pred vary frm, loc sl sft-hd, plty-sb blk, brit ip, fis-sb fis, comy sm & fnty mm, SS strg aa, sl-mod slty ip, comy sl sb wxy, mnr pyr nods, sl bit, tr mry bit clyst strg.

1685-1690 SH, wi intbd SS; SH v dk brn, frm-sft, sb plty-sb blk, sb fis, v fnty mm, sl-v slty grdg-v arg sltst ip, sl-mod dolc, qtzs, v hd, dns, sl-mod arg, sl sdy, mod-v dolc grdg-sity dol strg ip, tt, n/s.