

## Daily Geological Report

Paramount Resources Ltd.

Date: 23th November 2000

Country: Canada

Well: Paramount et al Mount Coty I-02

To	Attention	Fax Number
Paramount Resources Ltd.	Paul Price	(403) 266-6032

Report No: DGR 38	Rig: Akila Rig #51	Province: N.W.T.	LSD: I-02-60-20-123-30
Spud Date: 16-Oct-00	Days from Spud: 38	K.B. 372.95m aMSL	G.L. 387.90m aMSL

Hole Size: 222mm	Casing: 244.5mm @514m	Bit Type: F6709	Hours Drilling: 0
Mud Type: Gel-chem	Drill Mode: mud-motor	M.W.: 1275	Average ROP: 0m/hr
Vis: 57	pH: 10.5	F.L.: 7.2	CI: -

## 24 Hour Operations Summary (00.00-24.00 hours)

Drilled from 1640m-1663m		
Midnight Depth: 22-11-00	1663m MD:	Progress: 23m

Status at 0600 hours (23<sup>rd</sup> Nov.)

Depth m MD KB	(TVD SS)	Formation
1663	-1293m	GOLATA
Present Operation: RIH, after bit trip.		

## Stratigraphy

Formation Tops	Sample (mKB)		Prognosed (mKB)		Isopach		Hi/Lo (-)
	MD	TVDSS	MD	TVDSS	Sample	Prog	
Mattson	962.8	-889.9	962.8	-589.9	117.2	125.0	-
M1 Zone	1080.0	-707.1	1087.8	-714.9	24	24.0	7.8
M2 Zone	1104.0	-731.1	1111.8	-738.9	122	126.0	7.8
M3 Zone	1226.0	-853.1	1237.8	-864.9	26.5	23.0	11.8
M4 Zone	1252.5	-879.8	1260.8	-887.9	20.3	30.0	8.3
M5 Zone	1272.8	-899.9	1290.8	-917.9	73	70.0	18
M6 Zone	1348.8	-972.9	1360.8	-987.9	83.2	81.0	15
M7 Zone	1429.0	-1056.1	1428.0	-1053.1	19.3	22.0	-3.0
M8 Zone	1448.3	-1075.4	1448.0	-1075.1	66.7	67.0	-0.3
M9 Zone	1515.0	-1142.1	1515.3	-1142.4			
M10 Zone	1567.0	-1184.1	1561.0	-1188.1			
GOLATA	1647.0	-1274.1	1640.0	-1267.1			

Next Operation (06:00 hours onwards): RIH, Drill ahead from 1663 m.

## Remarks:

Good morning, Paul.

We are currently Running back in the hole after tripping for a bit. It will be about 8:00 before we start drilling. We drilled into the GOLATA yesterday at a depth of 1647m MD. The samples consist largely of Shale, black to dark brown, predominantly firm, brittle in part, grading to a claystone med brown to grey, soft, with silty and argillaceous stringers. Slightly dolomitic to calcareous in part. We should spend most of the day drilling through the GOLATA. Hole deviation is back to 1.3 deg.

Regards Byron Neu Wellsite Geologist.

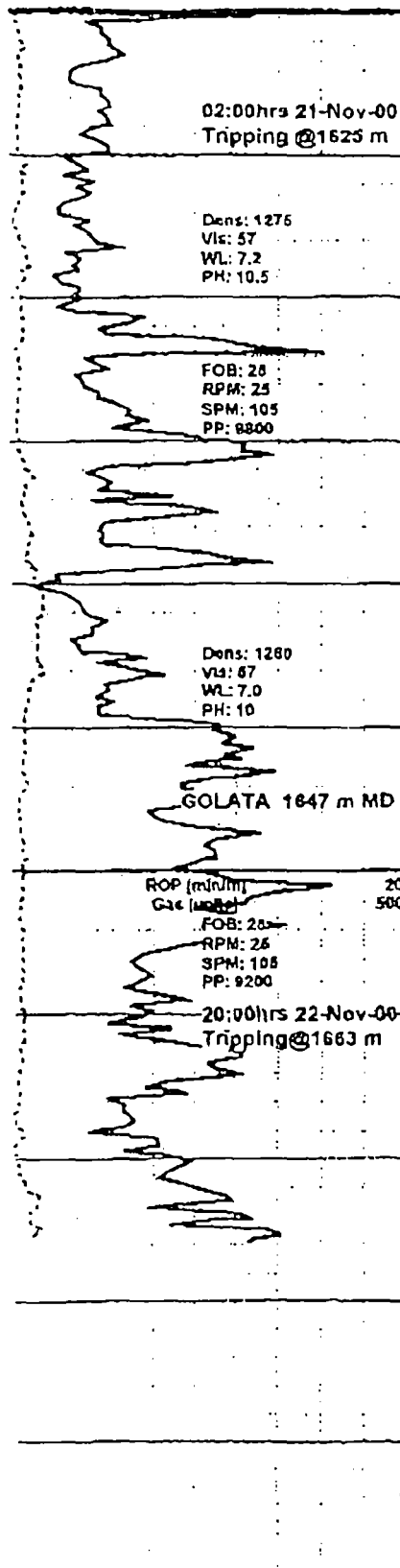
14836204647

P. 04

NOV-23-00 01:53 AM Gary Jonansson

Curve Track 1

ROP (m/r/m)  
Gas (units)



Depth	Porosity Type	Porosity	Lithology	Grain Size	Sorting	Roundness	Oil Shows
1625	X						
1630	X						
1635	X						
1640	X						
1645	X						
1650	X						
1655	X						
1660	X						
1665	X						
1670	X						
75							

pyr, pred 1-2% por, thin sd p-d tr por, com-abnt thin yel gn flr, mnr p slo stmg & thin diff cut; CLYST sim-abv, m-dk brn & bm gy, sft, tr wh anhydc mota & str lamis, vary mod-v bit, comy sl-mod bentc, Incr mnr sid strg, mnr Intbd SH aa.

1625-1635 SS, lt-m brn, vf gr wl tr-mnr f grs, mod slty, loc vf-f gr in mnr pt, pred qtzaren, comy cln-vary arg ip grdg-mnr wacke, w-m w srt, ang-ard, com arg ptgs, vary p-w ind, con-lcc abnt silc cmt, mnr str-sp dolc cmt, tr sp kaol-ill, tr ptchy pyr, tr qtz ovghs, pred tt-3% por, mnr str p-fr por, mnr-com v dull flor, tr fnt ques cut; Intbd CLYST m brn-gy, sft, tr anhydc-dolc mot-strk, vary bit ip, sl-mod bentc ip, tr sid nodz, loc v pyrc, mnr blk coaly sh grdg-bit coal.

1635-1647 SS, sim-abv, lt-m brn, vf gr wl tr-mnr f grs, mod slty, loc vf-f gr in mnr pt, pred cln qtzaren, vary arg ip occy grdg-wacke, w srt, ang-ard, com arg ptgs & lamis, tr slst strg, pred v w-m ind, p ind in mnr pt, com-abnt silc cmt, tr sp kaol-ill, tr ptchy pyr, tr loc mnr qtz ovghs, pred tt-2% por, mnr str p-fr por, com-abnt v dull yel gn flor, tr v fnt ques cut; mnr Intbd CLYST aa wl Incr mnr anhydc mota & lamis bcmg pred v bit, Incr tr-mnr sid strg, tr sl bentc, tr SH aa.

1647-1660 SH, blk-v dk brn, mnr gy gn, pred fnn, loc vary hd-zft, brit ip, pty-sb phy, fls-sb fls, comy sm & sb wxy grdg-clyst, vary slty In mnr pt occy grdg-arg slst strg, loc mm, vary carb-bit ip, sl dolc-calc ip, tr pyr, CLYST m brn-gy, sft, tr anhydc-dolc mot-strk, vary bit ip, sl-mod bentc ip, tr sid nodz, loc v pyrc, mnr blk coaly sh grdg-bit coal, mnr qtzr arg vary sdy tt slst strg.