

NOV-00 07:28 AM Gary Johansson

14036204647

P. 03

Daily Geological Report

Paramount Resources Ltd.

Date: 18th November 2000

Country: Canada

Well: Paramount et al Mount Coty I-02

To	Attention	Fax Number
Paramount Resources Ltd.	Paul Price	(403) 266-6032

Report No: DGR 33	Rig: Akita Rig #51	Province: N.W.T.	LSD: I-02-60-20-123-30
Spud Date: 16-Oct-00	Days from Spud: 33	K.B. 372.95m aMSL	G.L. 367.90m aMSL

Hole Size: 222mm	Casing: 244.5mm @514m	Bit Type: EP4603	Hours Drilling: 17.5
Mud Type: Gel-chem	Drill Mode: Rotary	M.W.: 1280	Average ROP: 2.1m/hr
Vis: 58	pH: 10.0	F.L.: 8.2	Cl: -

24 Hour Operations Summary (00.00-24.00 hours)

Change bit, RIH, cond. mud & circ., drill 1510-1547 m		
Midnight Depth: 17-11-00	1536.5m MD:	Progress: 26.5m

Status at 0600 hours (18th Nov.)

Depth m MD KB	(TVD SS)	Formation
1547m	-1174.1m	Mattson - M9 Zone
Present Operation: RIH.		

Stratigraphy

Formation Tops	Sample (mKB)		Prognosed (mKB)		Isopach		HI/Lo (-)
	MD	TVDSS	MD	TVDSS	Sample	Prog	
Mattson	962.8	-589.9	962.8	-589.9	117.2	126.0	-
M1 Zone	1080.0	-707.1	1087.8	-714.9	24	24.0	7.8
M2 Zone	1104.0	-731.1	1111.8	-738.9	122	126.0	7.8
M3 Zone	1226.0	-853.1	1237.8	-864.9	26.5	23.0	-11.8
M4 Zone	1252.5	-879.6	1260.8	-887.9	20.3	30.0	8.3
M5 Zone	1272.8	-899.9	1290.8	-917.9	73	70.0	18
M6 Zone	1345.8	-972.9	1360.8	-987.9	83.2	81.0	15
M7 Zone	1429.0	-1056.1	1426.0	-1053.1	19.3	22.0	-3.0
M8 Zone	1448.3	-1075.4	1448.0	-1075.1	66.7	67.0	-0.3
M9 Zone	1516.0	-1142.1	1518.3	-1142.4			

Next Operation (06:00 hours onwards): Bit trip.

Remarks:

Good morning, Paul. We stopped drilling at 5:30 am, and are currently circulating.

There is not much geology to report this morning as we only drilled 37m since yesterday's report. The section drilled yesterday consists almost entirely of sandstone with trace to minor carbonaceous to bituminous shale stringers. Cements are predominantly siliceous. There are common subhedral quartz overgrowths. There is some poor to fair porosity (i.e., ~4-7%) development in these intervals.

Regards

NOV-1-00 07:29 AM

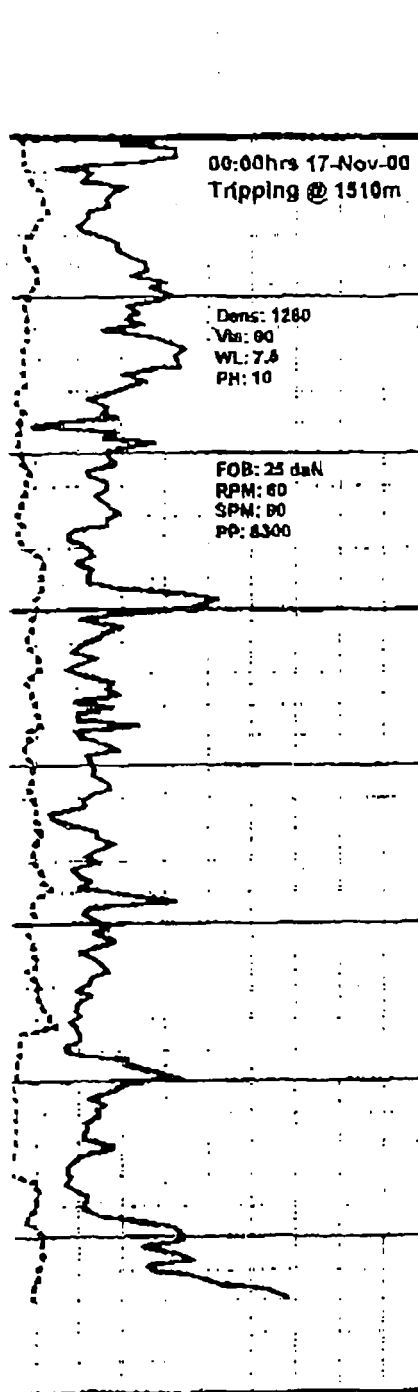
Gary Johannson

14036204647

P. 04

Curve Track 1

ROP (min/m)
Gas (units)



Depth	Porosity Type	Porosity	Lithology	Grain Size	Sorting	Cementation	Oil Shows
1510	X						
1515	X						
1520	X						
1525	X						
1530	X						
1535	X						
1540							
1545							
1550							
1560							

Geological Descriptions

1510-1515 SS, wht-lt brn, part cons, inc uncons, fro qtz gr, mnr clr gr, qtzaren, f gr, occ med gr, w srt, sub r- sub ang, mnr r gr, mod cmted, sil cmt, rr styl sfcs w pybit resd, tr sh strgs, p vis por, n/s.

1515-1520 SS, wht-lt brn, part cons, inc uncons, fro qtz gr, mnr clr gr, qtzaren, f gr, occ med gr, w srt, sub r- sub ang, mnr r gr, tr pyr, mod cmted, sil cmt, rr styl sfcs w pybit resd, spotted lt brn oil stn, tr sh strgs, p vis por, mnr sp dull yel gn flor, n/s.

1520-1525 SS, wht-lt brn, part cons, inc uncons, fro qtz gr, mnr clr gr, qtzaren, v-f gr, w srt, sub r- sub ang, mnr r gr, tr pyr, mod cmted, sil cmt, rr styl sfcs w pybit resd, spotted lt brn oil stn, tr sh strgs, p vis por, mnr sp dull yel gn flor, n/s.

1525-1530 SS, slm-abv bcmg csr, pale bt, pred f gr, mnr km grs, qtzaren w fros-clr qtz, mody w srt, ang-srd, incr mnr rd grs, cin, pred disagg, mnr p-mody ind & crmbly-frl cons ctgs w sil cmt, incr mnr-com qtz avgths, pred var p-str fr por w tr stks ln cons ctgs, infr incr com fr-p por, mnr sp dull yel gn flor, n/s.

1530-1535 SS, slm-abv bcmg sl fnr, pale bt, f-yl gr, tr-mnr km grs, qtzaren w clr-mnr fros qtz, mody w srt, ang-srd, cin, pred disagg, mnr p-mody cons ctgs w sil cmt, mnr-com qtz avgths, tr intl pyr, lt-mnr str p por ln cons ctgs, infr com p-str fr por, n/s.