

## Daily Geological Report

Paramount Resources Ltd.

Date: 16th November 2000

Country: Canada

Well: Paramount et al Mount Coty I-02

To	Attention	Fax Number
Paramount Resources Ltd.	Paul Price	(403) 266-6032

Report No: DGR 31	Rig: Akita Rig #51	Province: N.W.T.	LSD: I-02-60-20-123-30
Spud Date: 16-Oct-00	Days from Spud: 31	K.B. 372.95m aMSL	G.L. 367.90m aMSL

Hole Size: 222mm	Casing: 244.5mm @514m	Bit Type: ATJ-P77DX	Hours Drilling: 11.25
Mud Type: Gel-chem	Drill Mode: mud-motor	M.W.: 1270	Average ROP: 2.0m/hr
Vis: 110	pH: 10.0	F.L.: 8.0	Cl: --

## 24 Hour Operations Summary (00.00-24.00 hours)

Drill 1467-1471m, POOH for bit, change bit, RIH, ream 1448-1471m, drill from 1471-1490m, POOH for bit,		
Midnight Depth: 15-11-00	1490m MD: -1117.1m TVDSS	Progress: 23m

Status at 0600 hours (16<sup>th</sup> Nov.)

Depth m MD KB	(TVD SS)	Formation
1490m	-1117.1m	Mattson - M8 Zone
Present Operation: RIH.		

## Stratigraphy

Formation Tops	Sample (mKB)		Prognosed (mKB)		Isopach		Hi/Lo (-)
	MD	TVDSS	MD	TVDSS	Sample	Prog	
Mattson	962.8	-589.9	962.8	-589.9	117.2	125.0	.
M1 Zone	1080.0	-707.1	1087.8	-714.9	24	24.0	7.8
M2 Zone	1104.0	-731.1	1111.8	-738.9	122	126.0	7.8
M3 Zone	1226.0	-853.1	1237.8	-864.9	26.5	23.0	11.8
M4 Zone	1282.5	-879.6	1260.8	-887.9	20.3	30.0	8.3
M5 Zone	1272.8	-898.9	1280.8	-917.9	73	70.0	18
M6 Zone	1345.8	-972.9	1360.8	-987.9	83.2	81.0	15
M7 Zone	1428.0	-1056.1	1426.0	-1053.1	19.3	22.0	-3.0
M8 Zone	1448.3	-1075.4	1448.0	-1075.1		67.0	-0.3
M9 Zone			1515.3	-1142.4			

Next Operation (06:00 hours onwards): RIH, drill ahead.

## Remarks:

Good morning, Paul. We commenced tripping for a bit at ~2330hrs last night and are currently running in the hole as of 0700hrs. We should be back drilling about ~0930hrs.

There is not much geology to report this morning as we only drilled 19m since yesterday's report. The section drilled yesterday comprises mainly sandstone with minor interbedded carbonaceous to bituminous shale. The sandstone appears to be of mainly eolian origin with some interbedded very fine grained & silty sandstone. Cements are predominantly siliceous. There are common to abundant subhedral quartz overgrowths in the eolian sands which have extensively modified grain surfaces. There is some poor to fair porosity (i.e., ~4-9%) development in these intervals. There were no significant gas shows in the section drilled yesterday.

Regards

G. Johannson Wellsite Geologist

NOV-16-00 08:02 AM Gary Jonansson

17050207071

P. 04

Curve Track 1

ROP (min/m)  
Gas (units)

ROP (min/m)  
Gas (units)

Dens: 1276  
Vis: 65  
WL: 7.9  
pH: 10.0

SPM: 115  
PP: 9900  
MB Zone @ 1448.3m

ROP (min/m)  
Gas (units)  
Dens: 1276  
Vis: 65  
WL: 7.9  
pH: 10.0

Dens: 1270  
Vis: 60  
WL: 7.5  
pH: 10.0

00:00hrs 15-Nov-00  
Drilling @ 1467m

FOB: 32daN  
RPM: 60-motor  
SPM: 115  
PP: 11200

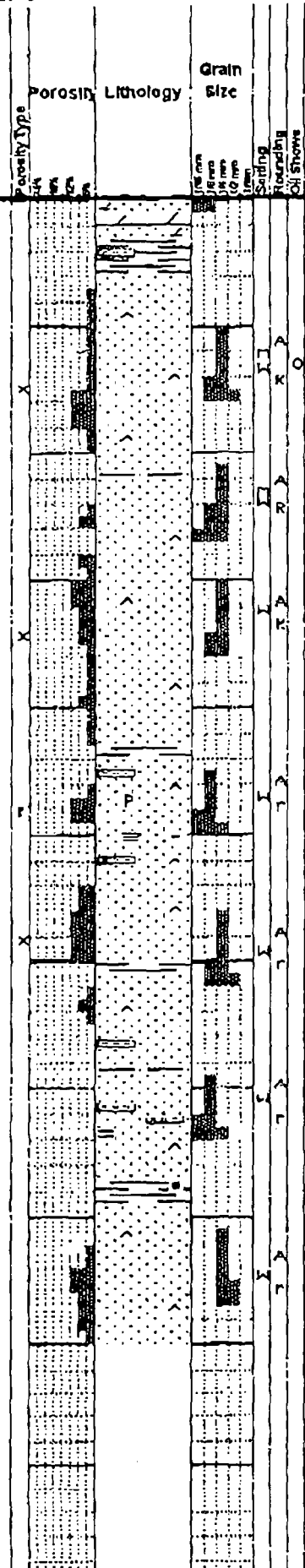
Dens: 1270  
Vis: 80  
WL: 8.0  
pH: 10.0

Dens: 1270  
Vis: 110  
WL: 8.0  
pH: 10.0

Trip for bit @ 1490m

00:00hrs 16-Nov-00  
Tripping @ 1490m

1420 1450 1455 1460 1465 1470 1475 1480 1485 1490 1495



Geological Descriptions

& vary slty, vf-f gr ip, qtzaren, ang-sb ang, p-m ind, abnt dolc cmt, n vis por, r/s; DOL m-dk br, crpxln, hd, chty ip, arg, slty-sdy ip grd-g-dolc ss, ff, r/s.

SS pale bf, f-vf gr, tr lm grs, qtzaren wi fros-clr qtz, mody w srt, ang-rd, clin, pred p ind & crmbly-fri, mod-occy w ind in mnr pt, silc cmt, mnr-com qtz ovghts, disagg ip, var por in cons ctgs: com tt-3%, less com 4-7% por, infr com p-fr por, tr sp pybit-bit, tr v dull ques flor & cut.

SS var: lt brn-lt gy, vf gr & slty ocgy grd-g-sitet sltgs ip, vary f-vf gr ip, m w-w srt, ang-srd, pred clin, sl arg ip, tr arg ptgs, mody-w ind, pred silc cmt, mnr str dolc cmt, disagg ip, n vis por, infr mnr p-fr por, tr-r pybit, n flor or cut, mnr thn sh strgs.

SS offwh-lt gy, f-vf gr, sl slty lp, qtzaren wi clr-fros qtz, w srt, ang-srd, mnr rd grs, clin, p ind & crmbly-fri ip, mody-w ind ip, disagg lp, pred silc cmt, mnr str dolc cmt, mnr-loc com qtz ovghts, n frac sfo & tr styl?, var por in cons ctgs: com tt-3%, less com 4-8%, r/s.

SS bf comy vf gr & vary slty ocgy grd-g-sitet lams, vary vf-f gr ip, w-mody w srt, ang-srd, clin-sl arg, pred mody-w ind, pred com-abnt silc cmt, mnr loc com dolc cmt, mnr-loc com arg ptgs, pybit-bit-occy pyrc ptgs ip (poss clyl-frac), tr-mnr pyr nods, tr-mnr p por, pred n vis por, n flor, tr-mnr v p cut; mnr SH blk-v dk br, pty-sb blk, mnr ip, sl-mody slty, fis ip, v carb-bit wi p cut, tr srt v bit clyst strgs.

SS pale bf, uvf-uf gr, tr-mnr lm grs, qtzaren wi fros-clr qtz, mody w srt, ang-srd, mnr rd grs, pred disagg, mnr-com p-mody cons ctgs wi silc & tr sp dolc cmt, com-abnt qtz ovghts, com var 4-8% por wi tt stks in cons ctgs, infr pred fr-p por, r/s, mnr Intbd SH aa bcng v carb-coaly, v micac ip, tr-mnr anhy strgs-lams.

SS wi mnr Intbd SH; SS bf-lt gy, vf gr & slty lp grd-g to mnr-com tt silc sltst lams wi com arg ptgs, qtzaren, w srt, ang-srd, clin-sl arg, mody-w ind, silc cmt, pred n vis por, r/s; SH dk gy-blk, frm-loc srt, pty-sb blk, comy fis, sm & fmy & mm, vary slty ip, pred vary carb, loc v coaly-bit, mnr gy gn sb wxy sh strgs.

SS pale bf, pred f gr, mnr lm & tr uvf grs, qtzaren wi clr-fros qtz, w srt, ang-srd, mnr rd grs, pred disagg, mnr-com p-mody cons ctgs wi silc cmt, com qtz ovghts, tr sp-str dolc cmt, var tt-str fr por in cons ctgs, infr com fr-p por, r/s.