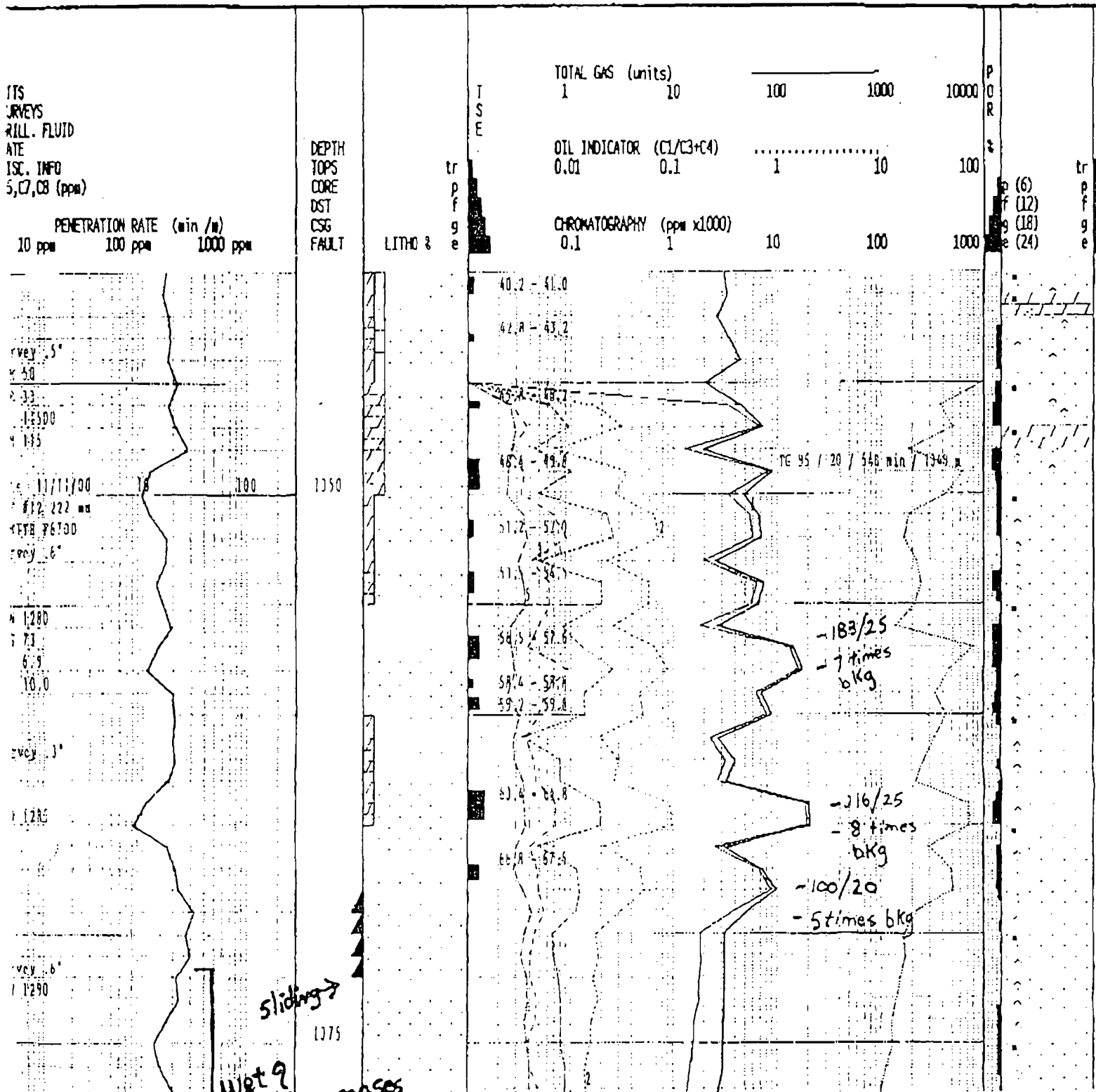


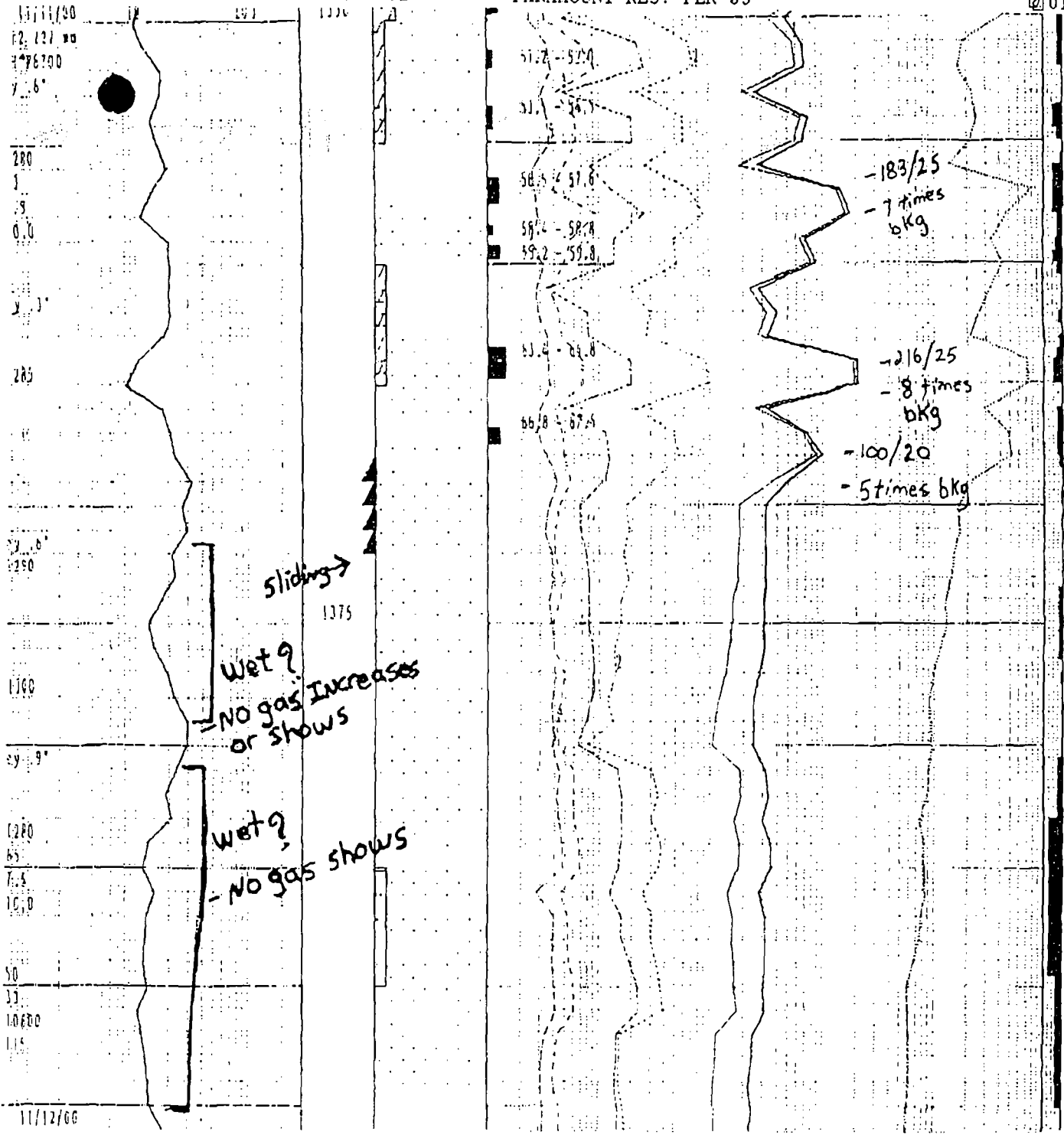
REMARKS:

INSTRUMENTATION: TG-CFD, MTI #16, GPMC

Para et al Mount Coty I-02 (mudlog)

ALL LITHOLOGIC SYMBOLS ARE CAN-STRAT COMPATIBLE





* Good streaky gas shows From 1345-1368 m.
 - Gas composition was mostly methane (c1) with minor Ethane (c2) and Propane (c3). A slight increase in heavies was noticed (c4-c8) but this was very minor; meaning it is mostly dry Gas with NO oil shows or crossover.
 - We had good ROP (1366-1379) and (1380-1395 m) Samples indicated good quality Sands with p - Good Por. We did not see an increase in Gas over these intervals meaning they could possibly be wet.