

Daily Geological Report

Paramount Resources Ltd.

Date: 11th November 2000

Country: Canada

Well: Paramount et al Mount Coty I-02

To	Attention	Fax Number
Paramount Resources Ltd.	Paul Price	(403) 266-6032

Report No: DGR 26	Rig: Akita Rig #51	Province: N.W.T.	LSD: I-02-60-20-123-30
Spud Date: 16-Oct-00	Days from Spud: 26	K.B. 372.95m aMSL	G.L. 367.90m aMSL

Hole Size: 222mm	Casing: 244.5mm @514m	Bit Type: F-67	Hours Drilling: 10.5
Mud Type: Gel-chem	Drill Mode: mud-motor	M.W.: 1280	Average ROP: 2.9m/hr
Vis: 73	pH: 10.0	F.L.: 7.5	Cl: -

24 Hour Operations Summary (00.00-24.00 hours)

Drill from 1320-1327m, POOH for bit, RIH, break circ. & wash to bottom, drill from 1327-1350m, POOH for bit.		
Midnight Depth: 10-11-00	1350m MD; -977.1m TVDSS	Progress: 30m

Status at 0600 hours (11th Nov.)

Depth m MD KB	(TVD SS)	Formation
1350m	-977.1m	Mattson - M6 Zone
Present Operation: RIH.		

Stratigraphy

Formation Tops	Sample (mKB)		Prognosed (mKB)		Isopach		Hi/Lo (-)
	MD	TVDSS	MD	TVDSS	Sample	Prog	
Mattson	962.8	-589.9	962.8	-589.9	117.2	125.0	-
M1 Zone	1080.0	-707.1	1087.8	-714.9	24	24.0	7.8
M2 Zone	1104.0	-731.1	1111.8	-738.9	122	126.0	7.8
M3 Zone	1226.0	-853.1	1237.8	-864.9	26.5	23.0	11.8
M4 Zone	1252.5	-878.6	1260.8	-887.9	20.3	30.0	8.3
M5 Zone	1272.8	-899.9	1290.8	-917.9	73	70.0	18
M6 Zone	1346.8	-972.9	1360.8	-987.9		81.0	15

Next Operation (06:00 hours onwards): RIH, drill ahead.

Remarks:

Good morning, Paul. We commenced tripping for a bit at ~2230hrs last night and are still running in the hole as of 0700hrs. We won't be back drilling until ~0900hrs.

We only drilled 23m yesterday through a relatively homogeneous section that appears to be dominated by shoreface sandstone with very minor interbedded dolomite. Cements changed at ~1315m to become dominantly dolomitic through the section drilled yesterday. There were some very minor gas shows in the overlying ~10m of sandstone above the top of the M6 Zone. Spotty hydrocarbon shows were also observed in this interval. There was some better gas response in the upon penetration of the M6 Zone.

Regards

G. Johannson Wellsite Geologist

End of Report

NOV 11-00 07:21 AM Gary Johannson

14036204647

P. 02

Curve Track 1

ROP (min/m)
Gas (units)



Porosity

Lithology

Grain Size

Geological Descriptions

Depth

Porosity Type

Grain Size

Grain Size

Grain Size

Grain Size

Grain Size

Grain Size

Grain Size

Grain Size

Grain Size

Grain Size

Grain Size

Grain Size

Grain Size

Grain Size

Grain Size

Grain Size

Grain Size

Grain Size

Grain Size

Grain Size

Grain Size

Grain Size

Grain Size

Grain Size

Grain Size

Grain Size

Grain Size

Grain Size

Grain Size

Grain Size

Grain Size

Grain Size

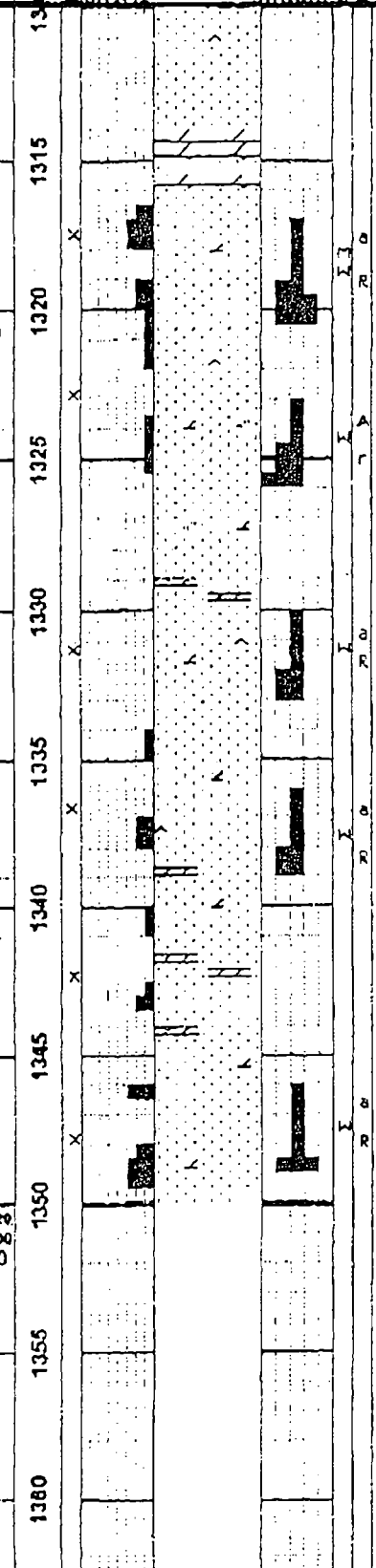
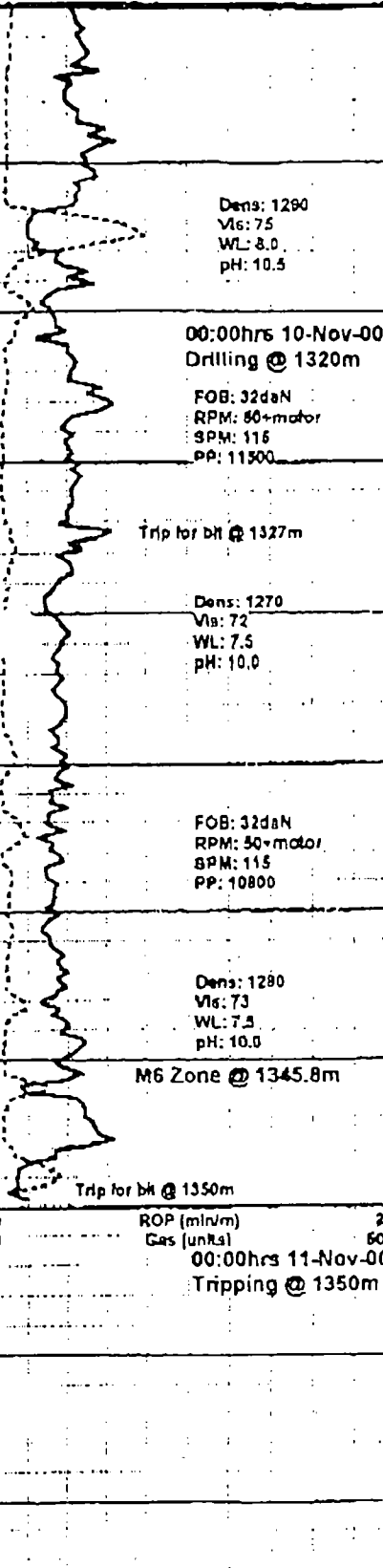
Grain Size

Grain Size

Grain Size

Grain Size

Grain Size



Geological Descriptions: DOL v sim-abv, com-v abnt vf rhombs in var tr-abnt arg mtx, grds-dolaren ip, comy sft-frm & crmbly, sity-sdy ip, n vis por, mnr v dull gn flor, mnr p thn diff & stmg cut. SS aa in mnr pt, pred uvf-lm gr, qtzaren wi abnt fros qtz, tr cht & ltc grs, mody w srt, sb ang-rd, pred disagg, mnr p cons ctgs wl dolc & mnr silc cmt, tr qtz ovghts, tr pyr, tt-str fr por in cons ctgs, Infr com p-str fr por, tr sp bit, mnr-com fr sp yel gn flor, mnr-com p-fr stmg & diff cut. SS offwh-ft gy, f-vf gr, sl sity, qtzaren, w srt, ang-srd, clin, pred p-mody ind wl com-abnt dolc & lsr silc cmt, disagg in mnr pt, pred n vis por, tr ques cut & flor. SS pale tan-ft gy, f-vf gr, tr lm grs, qtzaren, rr dolc grs, mody w srt, sb ang-rd, clin, disagg ip, p-mody ind, com-abnt dolc-mnr calc cmt, mnr silc cmt, tr instl pyr, pred n vis por, n/a, tr bf crypxln dol strgs, rr-tr ironst lams, tr vary arg sltst lams-strgs. SS sim-abv, pale tan-ft gy, f-vf gr, tr lm grs, qtzaren, incr rr-tr dolc grs, mody w srt, sb ang-rd, clin, comy vary disagg, p-mody ind, com-abnt dolc-mnr calc cmt, mnr silc cmt, tr-loc mnr qtz ovghts, tr instl pyr, comy n vis por in cons ctgs, mnr-loc com str p-fr por wl com sp bit, mnr-loc com sp yel flor, mnr p-fr stmg & diff cut, mnr bf-tm crp-micxln dol strgs. SS fros ft gy, pred f gr, tr-mnr uvf & lm grs, qtzaren, pred fros-mnr clr qtz, w srt, sb ang-rd, clin, pred disagg, tr cons ctgs wl dolc & silc cmt, tr qtz ovghts, Infr com fr-g por, mnr dull flor, tr ques cut, tr-mnr dol strgs aa.

Dens: 1290
Vis: 75
WL: 8.0
pH: 10.5

00:00hrs 10-Nov-00
Drilling @ 1320m

FOB: 32daN
RPM: 60+motor
SPM: 115
PP: 11500

Trip for bh @ 1327m

Dens: 1270
Vis: 72
WL: 7.5
pH: 10.0

FOB: 32daN
RPM: 50+motor
SPM: 115
PP: 10800

Dens: 1280
Vis: 73
WL: 7.5
pH: 10.0

M6 Zone @ 1345.8m

Trip for bh @ 1350m

ROP (min/m) 20
Gas (units) 500
00:00hrs 11-Nov-00
Tripping @ 1350m