

## Daily Geological Report

Paramount Resources Ltd.

Date: 10th November 2000

Country: Canada

Well: Paramount et al Mount Coty I-02

To	Attention	Fax Number
Paramount Resources Ltd.	Paul Price	(403) 266-6032

Report No: DGR 25	Rig: Akita Rig #51	Province: N.W.T.	LSD: I-02-60-20-123-30
Spud Date: 16-Oct-00	Days from Spud: 25	K.B. 372.95m aMSL	G.L. 367.90m aMSL

Hole Size: 222mm	Casing: 244.5mm @514m	Bit Type: ATJ-P88D	Hours Drilling: 15.75
Mud Type: Gel-chem	Drill Mode: mud-motor	M.W.: 1270	Average ROP: 2.5m/hr
Vis: 77	pH: 10.0	F.L.: 8.5	Cl: --

## 24 Hour Operations Summary (00.00-24.00 hours)

Change out bit, RIH, slip & cut, RIH, ream to bottom, drill from 1281-1320m.		
Midnight Depth: 09-11-00	1320m MD; -947.1m TVDSS	Progress: 39m

Status at 0600 hours (10<sup>th</sup> Nov.)

Depth m MD KB	(TVD SS)	Formation
1327m	-954.1m	Mattson - M5 Zone
Present Operation: POOH for bit.		

## Stratigraphy

Formation Tops	Sample (mKB)		Prognosed (mKB)		Isopach		HI/Lo (-)
	MD	TVDSS	MD	TVDSS	Sample	Prog	
Mattson	962.8	-589.9	962.8	-589.9	117.2	125.0	-
M1 Zone	1080.0	-707.1	1087.8	-714.9	24	24.0	7.8
M2 Zone	1104.0	-731.1	1111.8	-738.9	122	128.0	7.8
M3 Zone	1226.0	-853.1	1237.8	-864.9	26.5	23.0	11.8
M4 Zone	1252.6	-878.6	1260.8	-887.9	20.3	30.0	8.3
M6 Zone	1272.8	-899.9	1280.8	-917.9		70.0	18
M6 Zone			1360.8	-987.9		81.0	

Next Operation (06:00 hours onwards): POOH, change bit, RIH, drill ahead.

## Remarks:

Good morning, Paul. We commenced tripping for a bit at ~0330hrs last night and are still coming out of the hole as of 0700hrs. We won't be back drilling until early to mid afternoon. I estimate that we are somewhere between ~15-25m from the top of the M6 Zone and should penetrate it sometime this evening.

We drilled through a succession of mixed lithofacies yesterday that appears to be dominated by lower shoreface sandstone with minor interbedded dolomite. A strong eolian provenance is indicated by the dominance of frosted quartz in some sands and likely includes eolian deposits which may be variably re-worked. Cements are dominantly siliceous through the section. The upper sand section (i.e., ~1281-1290m) is dominated by an atypical, poorly-sorted, fine to coarse grained sublitharenite that is similar to that immediately overlying it (i.e., 1273-1281m). It was commonly to predominantly disaggregated in sample. Common poor to fair porosity is inferred for this sandstone. A relatively good thin gas show was encountered @ 1317m & appears to correlate to the top of the eolian? sand package at ~1408m on the K-02 logs. There was another minor gas show at 1304m. There is trace (i.e., <1%) gas entrapment in the mud this morning

Regards

G. Johansson Wellsite Geologist

Curve Track 1

OP (min/m)  
as (units)

Trip for bit @ 1281m  
00:00hrs 09-Nov-00  
Tripping @ 1281m

FOB: 32daN  
RPM: 50+motor  
SPM: 115  
PP: 11200

Dens: 1285  
Vis: 76  
WL: 7.0  
pH: 10.0

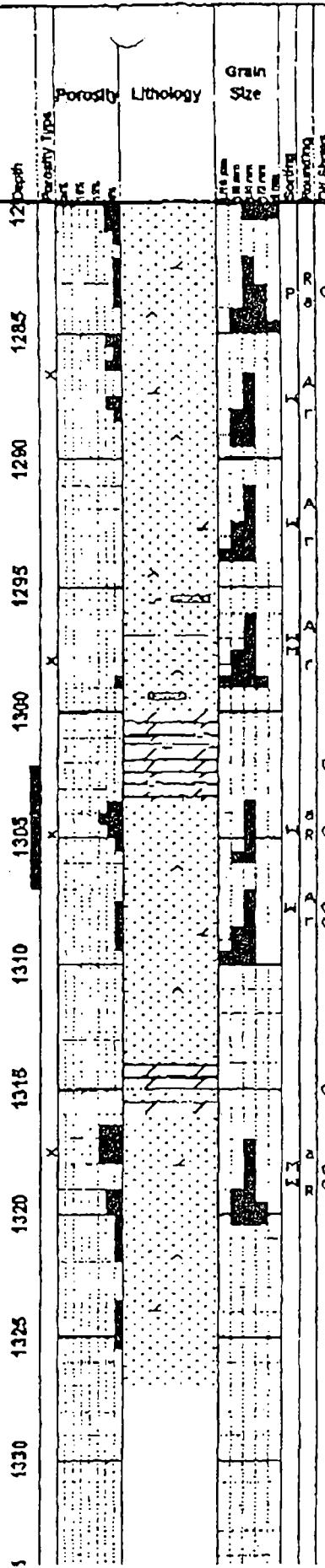
ROP (min/m)  
Gas (units)

Dens: 1280  
Vis: 79  
WL: 7.5  
pH: 10.0

Dens: 1290  
Vis: 78  
WL: 8.0  
pH: 10.5

00:00hrs 10-Nov-00  
Drilling @ 132xm

tp for bit @ 1327m



Geological Descriptions

SS mixed silt-abv; pred SS #2 lt gy, uvf-um gr, tr-mnr lc grs, sb litharen loc grd-g-litharen, abnt fros-mnr clr qtz w/ com dk-h vcol cht & ltc grs, mody p-p srt, rd-sb ang, clin, pred disagg, mar cons ctgs w/ mixed dolc & silc cmt, tr-mnr qtz ovghts, lnfr com p-fr por, mnr sp bit, tr sp flor, tr p cut; SS #1 lt gy-tan, f-vf gr, qtzaren, tr-loc mnr cht & ltc grs, mody w-w srt, ang-srd, clin, p-mody lnd, com silc & dolc cmt, var tt-mnr str fr por, n flor, tr p slo cut.

SS lt gy, f-vf gr, sl-mody silty, qtzaren, tr cht & ltc grs, w srt, ang-srd, clin, pred p-mody lnd & crmbly-fri, pred silc & mnr dolc cmt, tr qtz ovghts, tr pyr, pred n vis por, tr sp v dull flor, tr v wk ques cut.

SS offwh-lt gy, f-vf gr, mnr scat m & tr ltc grs, silty lp, qtzaren, w-m w srt, ang-srd, clin-tr sl arg, v silty in mnr pt grd-g-silt lam-srgrs w/ com arg ptgs, w lnd lp, p-mody lnd & crmbly-fri lp, pred silc w/ mnr dolc cmt, tr pyr, mnr str p por, tr sp bit, com v dull gn flor, n cut, mnr sh strgs-thn lntbds.

DOL var: dk-lt brn, pred com-v abnt vf rhombs in var tr-abnt arg mtx, grds-dolaren lp, comy silt-fm & crmbly, tr-mnr rexl allochems, silty lp, hd dns & crp-milxin in mnr pt, n vis por, com v dull gn flor, com p thn diff & stmg cut. SS tan-lt gy, pred f gr, qtzaren, fros-mnr clr qtz, pred disagg, mnr p-mody cons ctgs w/ silc & lsr dolc cmt, tt-p por in cons ctgs, lnfr com p-fr por, n flor, tr ques cut.

SS offwh-lt gy, v-f gr, qtzaren, tr dk ltc grs, w srt, ang-srd, clin, mody-p lnd, vary crmbly-sil fri, silc cmt, tr qtz ovghts, disagg in mnr pt, tt-str p por, mnr dull flor, mnr wk thn slo cut, tr sh strgs.

DOL v silt-abv, com-v abnt vf rhombs in var tr-abnt arg mtx, grds-dolaren lp, comy silt-fm & crmbly, silty lp, n vis por, mnr v dull gn flor, mnr p thn diff & stmg cut.

SS ss in mnr pt, pred uvf-lm gr, qtzaren w/ abnt fros qtz, tr cht & ltc grs, mody w srt, sb ang-rd, pred disagg, mnr p cons ctgs w/ dolc & mnr silc cmt, tr qtz ovghts, tr pyr, tt-str fr por in cons ctgs, lnfr com p-str fr por, tr sp bit, mnr-com fr sp yel gn flor, mnr-com p-fr stmg & diff cut.