

Daily Geological Report

Paramount Resources Ltd.

Date: 9th November 2000

Country: Canada

Well: Paramount et al Mount Coty I-02

To	Attention	Fax Number
Paramount Resources Ltd.	Paul Price	(403) 268-6032

Report No: DGR 24	Rig: Akita Rig #51	Province: N.W.T.	LSD: I-02-60-20-123-30
Spud Date: 16-Oct-00	Days from Spud: 24	K.B. 372.95m aMSL	G.L. 367.90m aMSL

Hole Size: 222mm	Casing: 244.5mm @514m	Bit Type: ATJ-P88D	Hours Drilling: 17.25
Mud Type: Gel-chem	Drill Mode: mud-motor	M.W.: 1285	Average ROP: 1.6m/hr
Vis: 77	pH: 10.0	F.L.: 6.5	Cl: --

24 Hour Operations Summary (00.00-24.00 hours)

Drill from 1254-1281m, condition mud & circulate, POOH for bit.		
Midnight Depth: 08-11-00	1281m MD; -905.1m TVDSS	Progress: 27m

Status at 0600 hours (9th Nov.)

Depth m MD KB	(TVD SS)	Formation
1281m	-905.1m	Mattson - M4 Zone
Present Operation: RIH to bottom.		

Stratigraphy

Formation Tops	Sample (mKB)		Prognosed (mKB)		Isopach		Hi/Lo (-)
	MD	TVDSS	MD	TVDSS	Sample	Prog	
Kindle	923.5	-550.1	np	np	39.3	n/a	(9.4)
Mattson	962.8	-589.9	962.8	-589.9	117.2	125.0	-
M1 Zone	1080.0	-707.1	1087.8	-714.9	24	24.0	7.8
M2 Zone	1104.0	-731.1	1111.8	-738.9	122	126.0	7.8
M3 Zone	1226.0	-853.1	1237.8	-864.9	28.5	23.0	11.8
M4 Zone	1252.5	-879.6	1260.8	-887.9		30.0	8.3

Next Operation (06:00 hours onwards): RIH & ream to bottom, drill ahead.

Remarks:

Good morning, Paul. There is not much geology to report this morning. We only drilled 17m since yesterday's 0600hr update. We commenced tripping for a bit at ~2000hrs last night and were still running in the hole as of 0600hrs. We are reaming to bottom as of 0630hrs.

We drilled through a succession of mixed lithofacies yesterday including eolian (i.e., M4 Zone) and lower shoreface. The basal sand section (i.e., 1273-1281m) is dominated by an atypical medium to coarse grained litharenite that was commonly disaggregated in sample. Common fair porosity is inferred for this sandstone. An encouraging indicator in this interval is a minor gas show at ~1277m and common poor thin hydrocarbon cut.

Regards

G. Johannson Wellsite Geologist

End of Report

Curve Track 1

ROP (min/m)
Gas (units)

Dens: 1330
Vis: 80
WL: 8.5
pH: 10.5

Trip for bit @ 1248m

Note ROP scale change
Scale Change
ROP (min/m)
Gas (units)

M4 Zone @ 1252.5m
00:00hrs 08-Nov-00
Drilling @ 1254m

FOB: 30daN
RPM: 45-motor
BPM: 115
PP: 10000

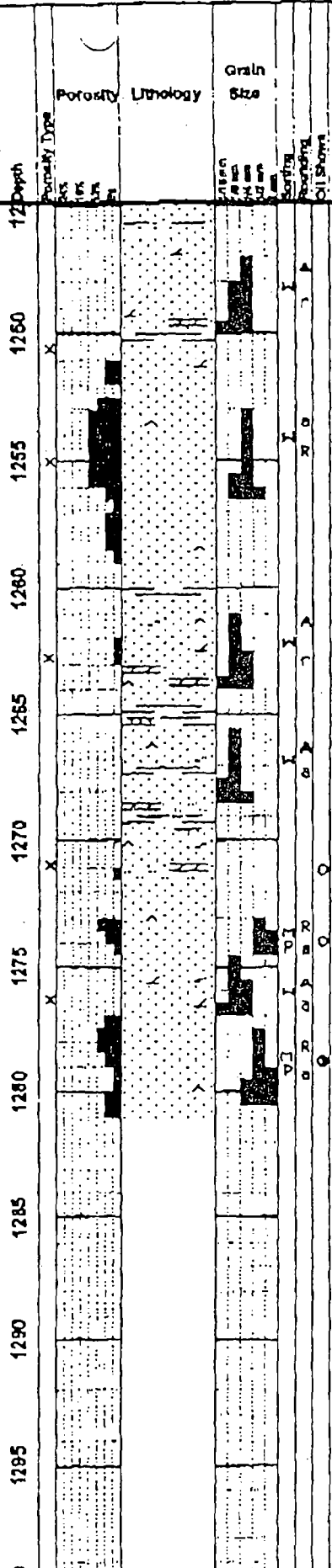
Dens: 1340
Vis: 75
WL: 8.0
pH: 9.8

Dens: 1280
Vis: 75
WL: 8.5
pH: 10.0

Dens: 1285
Vis: 75
WL: 6.0
pH: 10.0

Trip for bit @ 1281m

00:00hrs 09-Nov-00
Tripping @ 1281m



silty-sdy dol strgs.
SS pred aa bcmg sl fnr lp, disagg ln mnr pt, infr mnr p-fr por, n/s; mnr thn sh intbds-strgs dk gy, frm, brit, sb pty, fls, sl sb wxy lp, vary silty lp, tr silty-sdy dol strgs, tr lt gy bentc clyst strgs.

SS offwh-lt gy, f-vf gr, tr-mnr lm grs, sl silty, qtzaren wl pred fros qtz, w srt, sb ang-rd, cln, comy vary disagg, com p-mody lnd vary fr cons ctgs wl pred silic cmt; tr-mnr qtz ovghts, var tr-mnr fr por ln cons ctgs, infr com fr por, n/s.

SS offwh-lt gy, lt brn ip, vf-f gr, sl-mody silty, qtzaren, w srt, ang-srd, cln, comy mody-w lnd, p lnd & cmbly-fr lp, pred silic cmt, lncr mnr-loc com str dolc cmt, prod n vis por, mnr str p-fr por, tr ap dull flor, tr ques cut; mnr intbd SH dk gy-blk, frm, brit, pty-sb pty, fls, sl silty, carb-bit, tr dol strgs.

SS wl mnr intbd SH & SLTST; SS aa ip, pred tan-lt gy, vf gr, mnr f grs, vary silty occy grd-g-sltst, qtzaren, w srt, ang-sb ang, pred cln-al arg, tr arg ptgs, vary p-w lnd, silic & mnr dolc cmt, n vis por, n/s; SLTST m-dk brn, qtz, p-mody lnd, abnt dolc cmt & mnr-loc abnt dol rhombs, grds-dolalite ip, vary sdy lp, sl-mody arg, n vis por, mnr-loc com blk, mnr-com wk thn out, tr dol strgs; SH aa wl mnr sft lt brn fnty lamd mrl strgs.

SS mixed; SS #1 tan-lt gy, vf-f gr, qtzaren, w srt, ang-sb ang, cln, abnt dolc cmt, tt, n/s; SS #2 lt gy, lf-uc gr, tr-mnr uvf & vc grs, litharen grd-g-ab litharen, abnt fros-clr qtz com blue gy-mnr lt-dk vcol cht grs, mody p srt, rd-sb ang, cln, comy vary disagg, com cons ctgs wl silic & mnr dolc cmt, tr-mnr qtz ovghts, var tr-fr por ln cons ctgs, infr com fr por, mnr loc com ap bit, com dull gn flor, com sto blng & diff cut.