

## Daily Geological Report

Paramount Resources Ltd.

Date: 7th November 2000

Country: Canada

Well: Paramount et al Mount Coty I-02

To	Attention	Fax Number
Paramount Resources Ltd.	Paul Price	(403) 266-6032

Report No: DGR 22	Rig: Akita Rig #51	Province: N.W.T.	LSD: I-02-60-20-123-30
Spud Date: 16-Oct-00	Days from Spud: 22	K.B. 372.95m aMSL	G.L. 367.90m aMSL

Hole Size: 222mm	Casing: 244.5mm @514m	Bit Type: F70D (Smith)	Hours Drilling: 14.0
Mud Type: Gel-chem	Drill Mode: mud-motor	M.W.: 1300	Average ROP: 2.4m/hr
Vis: 75	pH: 10.0	F.L.: 6.0	Cl: --

## 24 Hour Operations Summary (00.00-24.00 hours)

Drill from 1173-1183m, circulate, POOH for bit, make up bit, RIH, break circulation & clean to bottom, drill 1183-1207m.		
Midnight Depth: 06-11-00	1207m MD: -834.1m TVDSS	Progress: 34m

Status at 0600 hours (7<sup>th</sup> Nov.)

Depth m MD KB	(TVD SS)	Formation
1226m	-853.1m	Mattson - M2 Zone
Present Operation: Drilling.		

## Stratigraphy

Formation Tops	Sample (mKB)		Prognosed (mKB)		Isopach		Hi/Lo (-)
	MD	TVDSS	MD	TVDSS	Sample	Prog	
Kindle	923.5	-550.1	np	np	39.3	n/a	(-9.4)
Mattson	962.8	-589.9	962.8	-589.9	117.2	125.0	-
M1 Zone	1080.0	-707.1	1087.8	-714.9	24	24.0	-7.8
M2 Zone	1104.0	-731.1	1111.8	-738.9			-7.8
M3 Zone			1237.8	-864.9			

Next Operation (06:00 hours onwards): Drill ahead.

## Remarks:

Good morning, Paul. We continued to drill through a succession of interbedded shoreface sandstone and dolomite yesterday. The dolomite is variably sandy and grades to dolomitic sandstone. There was no significant porosity or gas shows through this section. Since midnight we have drilled mainly in shoreface sandstone very similar to overlying sandstone (i.e., light quartzarenite with abundant dolomitic cement).

I believe we are right on top of the M3 Zone (I estimate it should come in somewhere around 1229m).

Note: ROP indicates the M3 zone @ -1226m. Awaiting samples to confirm.

Regards

G. Johansson Wellsite Geologist

End of Report

NOV-07-00 00:40 AM

Cary Johansson

1403020487

F-02

FOB: 30daN  
RPM: 45-motor  
SPM: 115  
PP: 11600

Trip for bit @ 1183m

Dens: 1300  
Vis: 75  
WL: 6.0  
pH: 10.0

FOB: 30daN  
RPM: 45-motor  
SPM: 115  
PP: 11600

Dens: 1300  
Vis: 72  
WL: 6.0  
pH: 10.5

Increase FOB 3daN

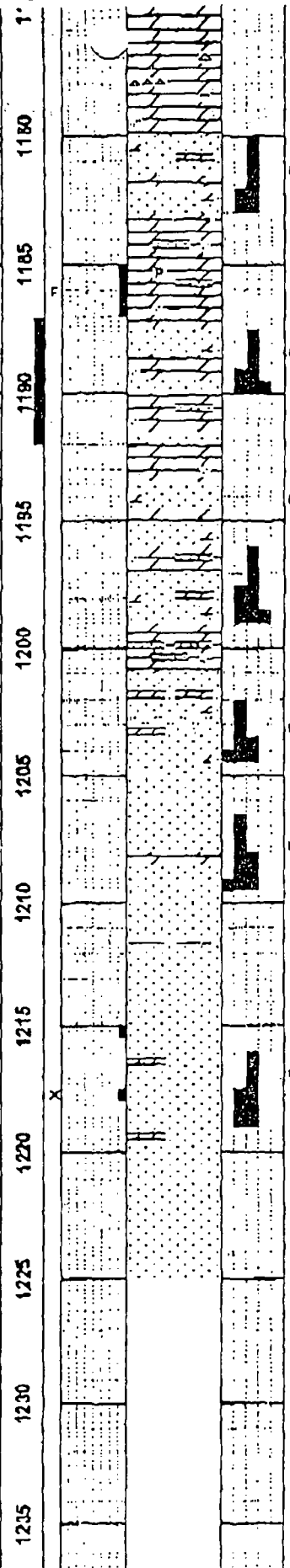
FOB: 33daN  
RPM: 45-motor  
SPM: 115  
PP: 11600

00:00hrs 07-Nov-00  
Drilling @ 1207m

Dens: 1300  
Vis: 70  
WL: 6.0  
pH: 10.5

M3 Zone?

Trap lost - OK



nods & strgs, loc silty-sdy lp, arg lp, tt, n/s.

SS w/ Intbd DOL; SS bf-tt gy, f-vf gr, qtzaren, w srt, ang-rd, cln, mody-w lnd, abnt dolc cmt, mnr silc cmt, disagg in mnr pt, r frac sfcs w/ pybit-pyre read, n vis por, n/s; DOL m brn-gy, sl mot, crp-micxin, hd, com rexl biocl, vary sdy ip occy grd-g-dolc ss, chty ip, r frac sfcs aa, v r slicks, tt, DOL w/ Intbd SS; DOL lt-m gy & bf brn, mot lp, biocl ip, pred vary sdy grd-g-dolc ss lp, vary silc lp w/ tr-mnr milky qtz blebs-mots, com dism & nodlr pyr, chty ip, tr cht nodc, Incr tr-mnr frac sfcs aa, pred tt, infr mnr p frac por, n/s; SS bf-tt gy, pred f-vf gr, mnr m gra, qtzaren loc grd-g-sbltharen, abnt clr-fros qtz, loc mnr dolc grs, mody-w ind, abnt dolc cmt, mnr silc cmt, n vis por, mnr-com v dull flor, tr quos cut.

SS w/ Intbd DOL; DOL as prev desc bcmg vary sdy comy grd-g-SS bf-tt brn, vary vf-f gr, mnr m grs, sbltharen loc grd-g-qtzaren, abnt clr-fros qtz w/ mnr-loc com dolc grs, tr cht & ltc grs, cln, w-mody w srt, ang-rd, disagg in mnr pt, pred w-v w lnd, abnt dolc-mnr calc cmt, mnr silc cmt, n vis por, com dull yel gn flor, mnr v wk v thn cut.

DOL w/ Intbd SS & mnr SLTST; DOL as prev desc comy grd-g-dolc SS aa; SS #2 offwh-ftgy, vf-f gr, sl silty, qtzaren, tr cht & ltc grs, w srt, ang-sb ang, cln, mody-w lnd, abnt dolc cmt, mnr silc cmt, n vis por, n/s; SLTST m brn, v qtzs, mody-p ind, abnt dolc cmt, n vis por, mnr v dull flor, mnr wk slo cut.

SS w/ mnr Intbd DOL; SS slm-abv bcmg sl car, offwh-ftgy, vf-f gr, sl silty, qtzaren, tr cht & ltc grs, w srt, ang-sb ang, pred cln, tr sl arg, disagg in mnr pt, mody-w lnd, decr com-abnt dolc-mnr calc cmt, Incr mnr-loc com silc cmt, n vis por, mnr sp dull flor, tr v slo quos cut; DOL as prev desc, tr sh strgs.

SS slm-abv, pale tan-ft gy, vf-f gr, qtzaren, w srt, ang-rd, cln, Incrty disagg lp, pred mody-w lnd, p ind & cmbly in mnr pt, com-abnt dolc cmt, mnr loc com str silc cmt, tr sp ill, pred n vis por, tr str p por, infr mnr p por, mnr sp dull flor, mnr v slo wk cut, tr sdy dolc strgs.