

## Daily Geological Report

Paramount Resources Ltd.

Date: 30th October 2000

Country: Canada

Well: Paramount et al Mount Coty I-02

To	Attention	Fax Number
Paramount Resources Ltd.	Paul Price	(403) 266-8032

Report No: DGR 14	Rig: Akita Rig #51	Province: N.W.T.	LSD: I-02-60-20-123-30
Spud Date: 16-Oct-00	Days from Spud: 14	K.B. 372.95m aMSL	G.L. 367.90m aMSL

Hole Size: 222mm	Casing: 244.5mm @514m	Bit Type: ATJ-55RG	Hours Drilling: 17.25
Mud Type: Gel-chem	Drill Mode: mud-motor	M.W.: 1085	Average ROP: 4.9m/hr
Vis: 47	pH: 10.0	F.L.: 6.3	CI: -

## 24 Hour Operations Summary (00.00-24.00 hours)

Change out bit, RIH, ream 910-923m, drill from 923-1006m.		
Midnight Depth: 29-10-00	1007m MD: -664.1m TVDSS	Progress: 84m

Status at 0600 hours (30<sup>th</sup> Oct.)

Depth m MD KB	(TVD SS)	Formation
1027m	-654.11m	Mattson
Present Operation: Drilling.		

## Stratigraphy

Formation Tops	Sample (mKB)		Prognosed (mKB)		Log (mKB)		Hi/Lo (-)
	MD	TVDSS	MD	TVDSS	MD	TVDSS	
Chinkeh Siltstone	705.5	-332.6	706.0	-333.1			0.5
Chinkeh Sand	708.5	-335.6	709.5	-336.6			1.0
Triassic	719.0	-346.1	720.5	-347.6			1.5
Belloy	791.0	-418.1	np	np			-7.5
Fantasque	839.0	-466.1	783.5	-410.6			-56.5
Kindle	923.5	-550.1	np	np			-9.4
Mattson	962.8	-589.9	914.1	-541.2			-48.7

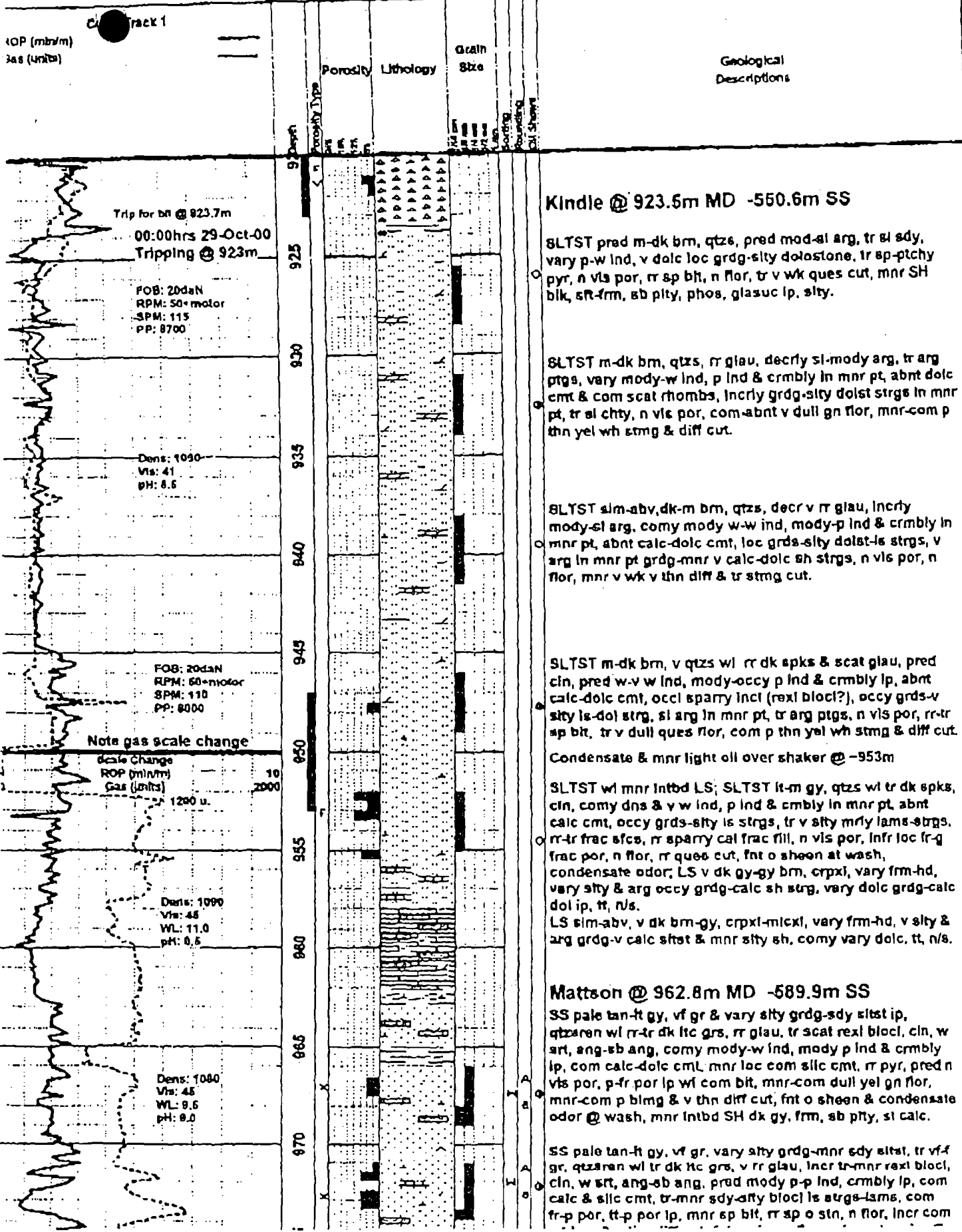
Next Operation (06:00 hours onwards): Drill ahead, possible bit trip.

## Remarks:

Good morning, Paul. There was a good show in the lower Kindle yesterday prior to penetrating the Mattson. At ~853m there was a gas show of ~1200 units over a BGG of ~40 units. We had considerable condensate and light oil over the shaker at that point. The show coincided with a lithology change to a denser, more competent, tight siltstone. There was no visible porosity or shows in this siltstone and rare evidence of fracturing in the 955m sample (i.e., rare fracture surfaces and sparry calcite fracture-fill). This mixed hydrocarbon show is fracture-derived. A retort test showed about 2% hydrocarbon in the mud at that point and again this morning. There has been a noticeable condensate odor in all samples thereafter. The Mattson top came in at 962.8m MD. The section drilled so far is dominantly of shore-face origin. The loggers will arrive on location today.

Regards

G. Johannson Wellsite Geologist



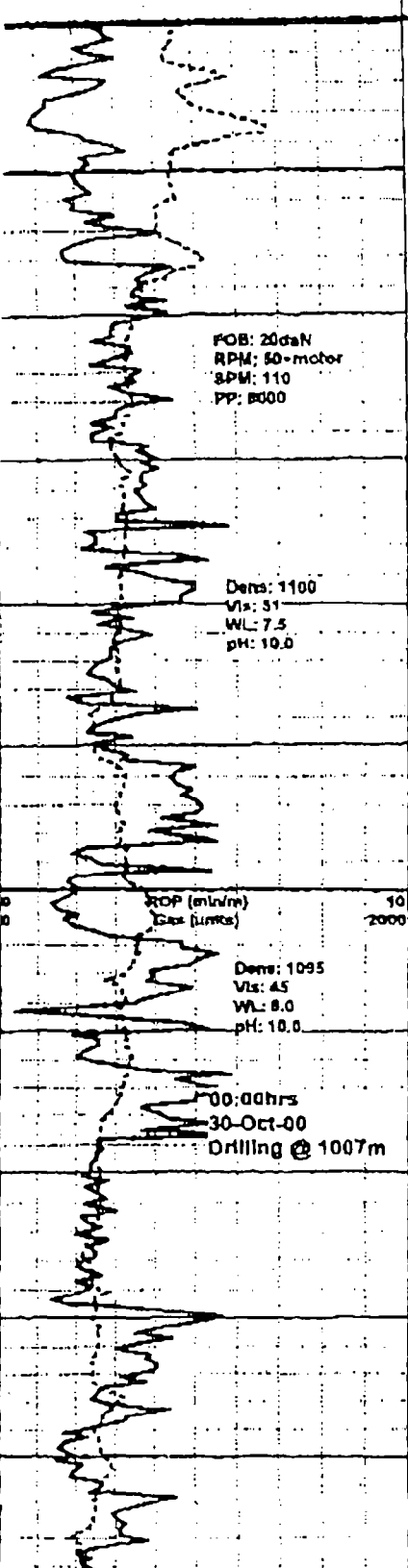
001-38-66 08:16 AM Gary Johansson

14036284641

P. 00

Curve Track 1

ROP (min/m)  
Gas (units)



Depth	Porosity	Lithology	Grain Size	Sample		Oil Shows
				Core No.	Type	
975	X					
980	X					
985						
990						
995	X					
1000						
1005						
1010						
1015						
1020						

SS pale tan-lt gy. vf gr. vary silty grd-g-mnr ady sltst, tr v-f gr. qtzaren wl tr dk ltc grs. v rr glau, incr tr-mnr rexl biocl, clin, w srt, ang-sb ang, pred mody p-p lnd, crmbly lp, com calc & silc cmt, tr-mnr sdy-shty biocl ls strgs-lams, com fr-p por, tr-p por lp, mnr sp bit, rr sp o stn, n flor, incr com p blmg & v thn diff cut, fnt o sheen & condensate odor @ wash, mnr Intbd SH aa.

SS offwh-lt gy. vf gr & silty comy grd-g-sdy sltst lp, qtzaren wl incr tr vcol ltc grs, rr glau, rr biocl, w srt, ang-sb ang, vary mody w-p lnd & crmbly, abnt dolc cmt, rr-tr pyr, pred n vis por, mnr p-str fr por, tr v dull gn flor, tr v wk ques cut, tr-mnr Intbd sh aa.

SS sim-prev desc bcmg decrly grd-g-sltst lp, bcmg p-mody ind wl str mixed calc-dolc & lsr silc cmt, rr-tr fos lams-strgs, pred n vis por, tr-mnr str p por, n/s, mnr Intbd SH dk gy-bik, frm, pty, brit, fis, sm, comy sl dolc.

SS wl mnr Intbd SLTST & SH; SS sim-abv, pred offwh-lt gy, lt tan lp, vf gr, vary silty lp grd-g-sdy sltst, qtzaren wl tr vcol ltc grs, rr biocl, w srt, ang-sb ang, comy vary disagg lp wl Infrd v p-p lnd, mody-p lnd lp, abnt calc cmt, rr-tr pyr, pred n vis por in cons ctgs, Infr p-tr por lp, n flor, rr-tr v wk ques cut; SLTST m brn-gy, qtzs, vary arg lp, v calc-dolc grd-g-shty ls & dol strgs, tr, n/s; SH bik, sft-frm, sb pty-pty, fle, v carb-bit.