

Daily Geological Report

Paramount Resources Ltd.

Date: 28th October 2000

Country: Canada

Well: Paramount et al Mount Coty I-02

To	Attention	Fax Number
Paramount Resources Ltd.	Paul Price	(403) 266-8032

Report No: DGR 12	Rig: Akita Rig #51	Province: N.W.T.	LSD: I-02-60-20-123-30
Spud Date: 16-Oct-00	Days from Spud: 12	K.B. 372.95m aMSL	G.L. 367.90m aMSL

Hole Size: 222mm	Casing: 244.5mm @514m	Bit Type: F35 (Smith)	Hours Drilling: 19.5
Mud Type: Gel-chem	Drill Mode: mud-motor	M.W.: 1095	Average ROP: 7.1m/hr
Vis: 39	pH: 9.5	F.L.: 8.5	Cl: -

24 Hour Operations Summary (00.00-24.00 hours)

RIH drill from 720-858m.		
Midnight Depth: 27-10-00	858m MD; -485.1m TVDSS	Progress: 138m

Status at 0600 hours (28th Oct.)

Depth m MD KB	(TVD SS)	Formation
876m	-503.1m	Fantasque
Present Operation: Tripping for bit.		

Stratigraphy

Formation Tops	Sample (mKB)		Prognosed (mKB)		Log (mKB)		HI/Lo (-)
	MD	TVDSS	MD	TVDSS	MD	TVDSS	
Garbutt	517.0	-144.1	512.5	-139.6			-4.5
Garbutt Radioactive Zone	637.27	-264.3	635.5	-262.8			-1.7
Bullhead	656.5?	-283.6	649.0	-276.1			-7.5
Chinkeh Siltstone	705.5	-332.6	706.0	-333.1			0.5
Chinkeh Sand	708.5	-335.6	709.5	-336.6			1.0
Triassic	719.0	-346.1	720.5	-347.6			1.5
Belloy?	791.0	-418.1	np	np			
Fantasque	839.0	-466.1	783.5	-410.6			-

Next Operation (06:00 hours onwards): Drill ahead.

Remarks:

Good morning, Paul. The upper part of the 'Fantasque' at this locality is very similar to the Belloy on the I-46 well. It is a variably silicified ('chertified') section of fine-grained siliciclastics and mudrocks of shallow-marine origin. Downsection, there is some relatively thick lithic wacke and sublitharenite with interbedded chert and cherty mudstone before penetrating the 'clean' dense chert of the typical Fantasque. I am tentatively calling this upper section the Belloy. The top is 7.5m low to prognosis. There is some localized inferred fair to good fracture porosity in the massive chert section of the Fantasque (i.e., 839-852m). There were common minor to fair gas shows through this section.

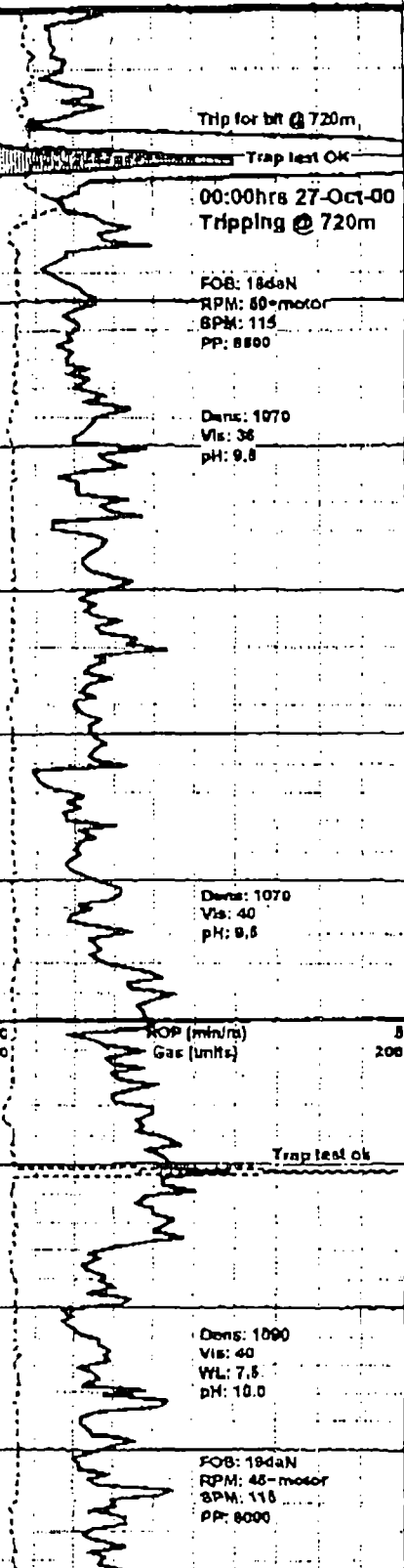
We commenced tripping for a bit @ 0300hrs this morning. We are still in massive chert of the lower Fantasque.

Regards

G. Johannson Wellsite Geologist

Curve Track 1

ROP (min/m)
Gas (units)



Depth	Porosity Type	Porosity	Lithology	Grain Size	Geological Descriptions
719.0m					SS as prev desc bcmg sl stly wl incr mnr vf grs, incr m-m w lnd, incr sp dolc cmt, decr mnr qtz ovghts, decr por, com p-fr (4-7%), mnr-com n-3% por, n/s, tr-mnr nonglauc qtzaren wl com coaly ptgs @ base. Trilassic @ 719.0m MD -346.1m SS
720m					SH wl mnr lntbd SLTST; SH pred m gy, mnr m-rusty brn, pred frm & brit, sft in mnr pt, plty-sb plty, fls, pred sm & v fnty mm, v stly & mm in mnr pt grdg-arg sltst strgs; SLTST lt-m gy, qtzs wl tr-mnr dk spks, vary micac lp wl occl v micac ptgs, cin-vary arg, pred w-v w lnd, pred silc cmt, mnr loc com str dolc cmt, tt, n/s.
725m					
730m					
735m					
740m					SH m gy, vary hd-sft, plty-sb plty, fls, brit ip, pred sm & fnty mm, loc vary stly wl arg sltst lams & strgs, sl sb wxy ip, tr scat carb deb; mnr lntbd SLTST lt-m gy, qtzs wl tr-mnr carb spks, sl-mody micac, occl v micac ptgs, pred mody-v w lnd, com-abnt dolc cmt, mnr silc cmt, tt/n/s.
745m					SH mixed; com m gy aa bcmg sl dolc in mnr pt, lntbd & lntdmd wl com red brn-mar SH frm, loc hd-sft, plty-sb blk, comy fls-sb fls, brit ip, pred sm & fnty mm, sl-mody stly in mnr pt, sl sb wxy, sl bentc ip, comy sl-mody dolc.
750m					
755m					SH pred m-dk gy-brn gy, mnr red brn aa, pred frm, loc hd-sft, vary plty-sb blk, brit ip, comy fls-sb fls, carb lp, sm & sb wxy ip, comy vary stly ip wl incr mnr-com arg sltst strgs, vary fnty-mody mm, tr-mnr sl dolc, tr-mnr sltst aa.
760m					
765m					SH mixed; rusty red-brn, mar, comy frm-hd, sl-mody sft ip, brit ip, comy plty-sb plty & fls, pred sm & fnty mm, vary stly in mnr pt, comy mody-v dolc, vary bentc lp wl com red chy at wash, lntbd & lntdmd wl ~25% lt-m gy SH frm-hd, plty-sb blk, comy brit, comy fls, comy vary stly wl com arg-cin sltst strgs aa, sm & fnty mm ip, sl-loc mody dolc ip.

SS as prev desc bcmg sl stly wl incr mnr vf grs, incr m-m w lnd, incr sp dolc cmt, decr mnr qtz ovghts, decr por, com p-fr (4-7%), mnr-com n-3% por, n/s, tr-mnr nonglauc qtzaren wl com coaly ptgs @ base. Trilassic @ 719.0m MD -346.1m SS

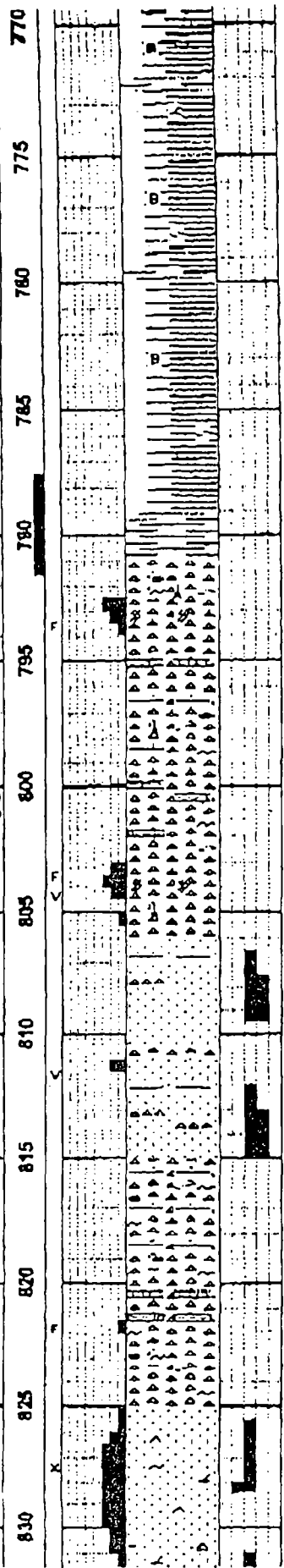
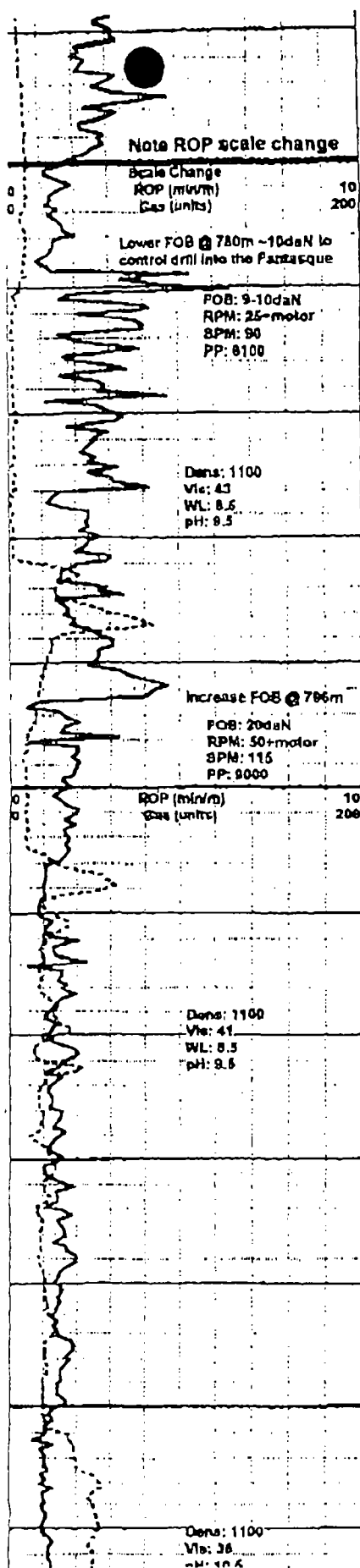
SH wl mnr lntbd SLTST; SH pred m gy, mnr m-rusty brn, pred frm & brit, sft in mnr pt, plty-sb plty, fls, pred sm & v fnty mm, v stly & mm in mnr pt grdg-arg sltst strgs; SLTST lt-m gy, qtzs wl tr-mnr dk spks, vary micac lp wl occl v micac ptgs, cin-vary arg, pred w-v w lnd, pred silc cmt, mnr loc com str dolc cmt, tt, n/s.

SH m gy, vary hd-sft, plty-sb plty, fls, brit ip, pred sm & fnty mm, loc vary stly wl arg sltst lams & strgs, sl sb wxy ip, tr scat carb deb; mnr lntbd SLTST lt-m gy, qtzs wl tr-mnr carb spks, sl-mody micac, occl v micac ptgs, pred mody-v w lnd, com-abnt dolc cmt, mnr silc cmt, tt/n/s.

SH mixed; com m gy aa bcmg sl dolc in mnr pt, lntbd & lntdmd wl com red brn-mar SH frm, loc hd-sft, plty-sb blk, comy fls-sb fls, brit ip, pred sm & fnty mm, sl-mody stly in mnr pt, sl sb wxy, sl bentc ip, comy sl-mody dolc.

SH pred m-dk gy-brn gy, mnr red brn aa, pred frm, loc hd-sft, vary plty-sb blk, brit ip, comy fls-sb fls, carb lp, sm & sb wxy ip, comy vary stly ip wl incr mnr-com arg sltst strgs, vary fnty-mody mm, tr-mnr sl dolc, tr-mnr sltst aa.

SH mixed; rusty red-brn, mar, comy frm-hd, sl-mody sft ip, brit ip, comy plty-sb plty & fls, pred sm & fnty mm, vary stly in mnr pt, comy mody-v dolc, vary bentc lp wl com red chy at wash, lntbd & lntdmd wl ~25% lt-m gy SH frm-hd, plty-sb blk, comy brit, comy fls, comy vary stly wl com arg-cin sltst strgs aa, sm & fnty mm ip, sl-loc mody dolc ip.



SH v sim-abv bcmg 90% rusty red-brn, decry dolc lp & comy non-dolc, Incrly vary bentic lp w/ abnt red cly at wash, decr mnr lt-m gy sh Intbds aa.

SH rusty red-brn, mar, comy frm-hd, sl-mody sft ip, brlt ip, comy pty-sb pty & fls, pred sm & fnty mm, vary sily in mnr pt, pred non-dolc, vary bentic lp w/ com red cly at wash, rr-tr vary tuffac crm bent, tr-mnr m gy sh strgs aa.

SH mixed; pred as prev desc w/ ~20% m gy SH sim-abv, frm-hd, pty, comy brlt, fls, pred sm & fnty mm, sl sb wxy, v rr slicks.

Belloy? @ 791.0m MD -418.1m SS

CHT predy dk brn-brn gy, comy hd & dns, vary frm-sht & cmbly ip, tr transl, sl-mody glauc, fnty spiclr in mnr pt, vary shty-sdy lp occy grdg-v chty ss, com gran tex on ctgs, vary arg lp grdg-chty glauc-sl phosc sh, sl dolc lp, tr sft blk phosc glauc sh strgs, tr loc abnt pyrzd spics & wm bur, rr-tr sdy pyr nod, Infr mnr p-fr loc frac por, tr frac sfts w/ bit linings, rr-tr p mic vugs w/ sp bit, tr-mnr dull yel flor, mnr-com p slo yel wh stmg cut.

CHT tan-lt gy, pred vary siliclf shtst & v/ gr ss, sl-mody glauc, v hd dns & transl ip, comy vary hd-frm & sl cmbly, loc sl-mody spiclr in mnr pt, pred v shty-sdy grdg-v chty shtst-ss, com gran tex, sl dolc lp, mody-v dolc in mnr pt, Incr tr frac sfts w/ bit linings, mnr p mic-vug por w/ com bit, com mod yel gn flor, com wk slo stmg & v thn diff cut.

SS dk gy, lt-m gr, tr uvf grs, lithic wacke w/ com clr-yel-omg qtz & mnr-com vcol ltc grs, com-abnt arg-sl phosc mix, grds-vary sdy sl-mody phosc-chty mdst lp, mody p srt, sb ang-sb rd, vary disagg lp, v w-mody p ind, vary siliclf lp, silic cmt, mnr dolc cmt, com-loc abnt epidote? blebs-micvug linings & rr xtals, pred lt, mnr loc p-fr pred Ineff micvug por, rr-tr frac, n/s.

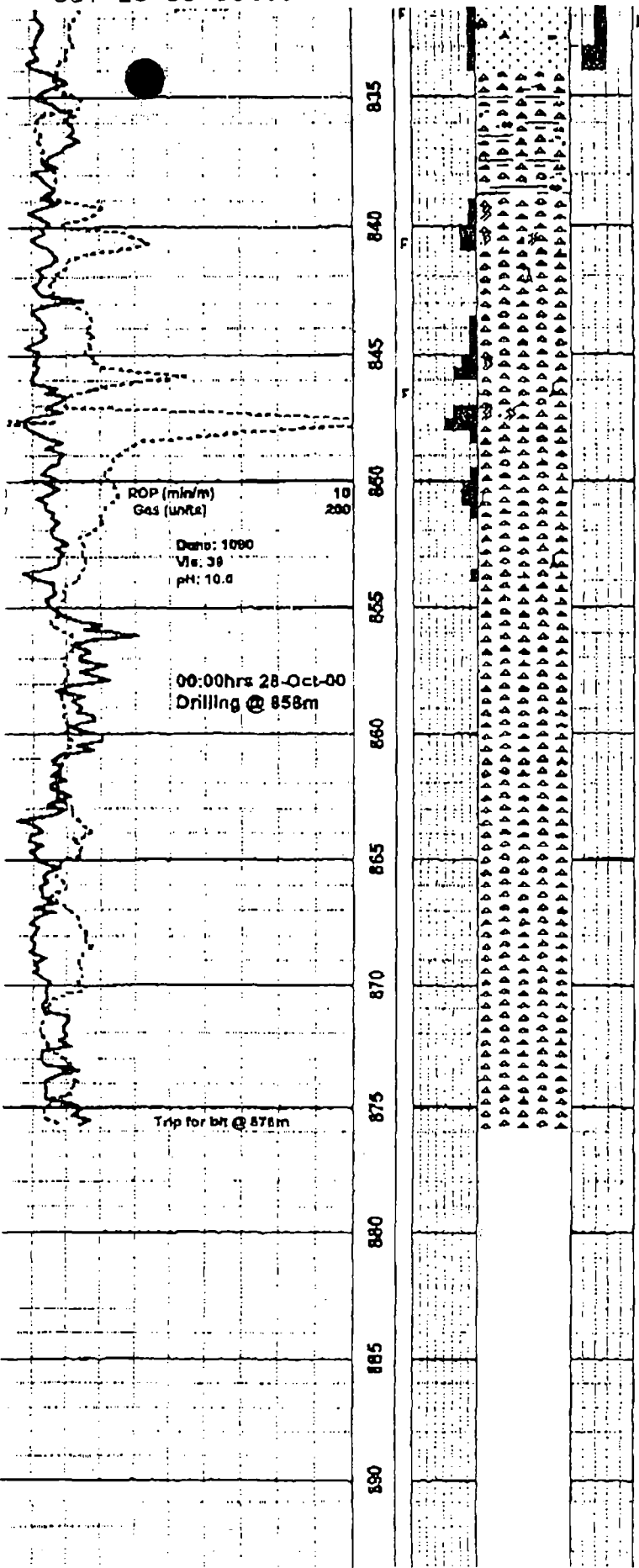
SS pred as Incrly grdg-mnr-com vary chty mdst & cht, sl Incr glauc & decr epidote?, tr-mnr dk gy-blk pty phosc-bht sh strgs, , pred lt, n/s.

CHT var: dk brn-gy, rusty red/omg, com-v abnt glauc, comy vary hd-sl sft, cmbly ip, hd & dns in mnr pt, com gran tex, comy shty-loc sdy lp, vary siliclf lp grdg-vary chty phosc & hematitic mdst, vary dolc lp w/ mnr loc com dol mombs, tr-mnr blk vary phos sh, u, n/s.

CHT pred as w/ decr tr-mnr hematitic mdst-cht, mnr lt gy dns shty-sdy cht grdg-chty shtst-ss, mnr m-dk gy vary silic f gr glauc lithic wacke grdg-sdy cht ip, rr-tr frac sfts w/ bit, rr sparry cal frac fill, n/s.

SS uvf-uf gr, tr-mnr lm grs, abnt fros-yellomg qtz w/ mnr vcol ltc grs, tr-mnr glauc, w srt, sb ang-srd, pred disagg, tr-mnr cin cons ctgs w/ com-abnt tt silic cmt & mnr-com dolc cmt, tr arg mix on lse grs, mnr sp-ptchy ilmonitic? mbc/cmt, Infr fr por lp, n-p por lp, n/s.

SS sim-prev desc bcmg Incrly cons in mnr pt, arg & chty lp, Infr p-fr por w/ tt stks, n/s.



CHT v dk gy-bm, com-abnt glau, vary hd frm & crmbly, comy grds-vary chty phosc glauc mdst & sh, com mas-xln pyr nod & xtals, slty-sdy ip, mnr-loc abnt limontic atn of gre? & peis?, tt, n/s.

Fantasque @ 839.0m MD -466.1m SS

CHT tan-ft bm, sb transl-transl, v hd, dna, tr glau, comy vary splcir, tr ady, tr-mnr frac sfcs w/ clr xln qtz mic xtals & sp-ptchy bit, lnfr mnr-com fr-p frac por, mnr sp mod yel flor, tr-mnr v p wk slo blmg & v thn diff cut.

CHT v sim-abv bcmg lt gy ln mnr pt, tr dism pyr, tr phosc sh strgs, lnfr mnr frac sfcs, tr pyr frac llnings, lnfr com fr-p & mnr str g frac por, mnr v dull flor, n cut.