

## Daily Geological Report

Paramount Resources Ltd.

Date: 29th October 2000

Country: Canada

Well: Paramount et al Mount Coty I-02

To	Attention	Fax Number
Paramount Resources Ltd.	Paul Price	(403) 266-6032

Report No: DGR 13	Rig: Akita Rig #51	Province: N.W.T.	LSD: I-02-60-20-123-30
Spud Date: 16-Oct-00	Days from Spud: 13	K.B. 372.95m aMSL	G.L. 367.90m aMSL

Hole Size: 222mm	Casing: 244.5mm @514m	Bit Type: ATJ-55RG	Hours Drilling: 8.5
Mud Type: Gel-chem	Drill Mode: mud-motor	M.W.: 1090	Average ROP: 7.6m/hr
Vis: 45	pH: 9.0	F.L.: 8.5	Cl: ~

## 24 Hour Operations Summary (00.00-24.00 hours)

Drill from 858-826m, POOH for bit, RIH, ream from 860-876m, drill from 876-923m, POOH for bit.		
Midnight Depth: 28-10-00	923m MD: -550.1m TVDSS	Progress: 65m

Status at 0600 hours (28<sup>th</sup> Oct.)

Depth m MD KB	(TVD SS)	Formation
937m	-564.1m	Kindle
Present Operation: Drilling.		

## Stratigraphy

Formation Tops	Sample (mKB)		Prognosed (mKB)		Log (mKB)		Hi/Lo (-)
	MD	TVDSS	MD	TVDSS	MD	TVDSS	
Garbutt Radioactive Zone	637.27	-264.3	635.5	-262.6			-1.7
Bullhead	656.57	-283.6	649.0	-276.1			-7.5
Chinkeh Siltstone	705.5	-332.6	706.0	-333.1			0.5
Chinkeh Sand	708.5	-335.6	709.5	-336.6			1.0
Triassic	719.0	-346.1	720.5	-347.6			1.5
Belloy	791.0	-418.1	np	np			-7.5
Fantasque	839.0	-466.1	783.5	-410.6			-55.5
Kindle	923.5	-550.1	np	np			-9.4

Next Operation (06:00 hours onwards): Drill ahead.

## Remarks:

Good morning, Paul. The different lithofacies and diagenetic facies of the Fantasque cherts noted last year correlate well with the section at this locality, confirming their utility as regional markers. There was an increase in fracturing and associated porosity in the basal ~25m of the formation, with common to locally abundant variable poor to fair to locally good fracture porosity. There were common minor gas shows through this section.

We commenced tripping for a bit @ 0930hrs last night and didn't get back drilling until 0430hrs this morning. We are currently drilling @ ~8m/hr in dolomitic siltstone. These rocks appear to be of Kindle affinity and consist of very dolomitic, variably argillaceous siltstone that grades to silty dolomite in part. The top came in at 923.5m which is 9.4m low to the prognosed Mattson top. There is no porosity or significant shows thus far.

Regards

G. Johansson Wellsite Geologist

OCT-29-00 07:23 AM Gary Johannson

14036204647

P. 02

Curve Track 1

ROP (m/vm) Gas (units)



Depth	Porosity	Lithology	Grain Size
850	5.5	CHT	fine
855	5.5	CHT	fine
860	5.5	CHT	fine
865	5.5	CHT	fine
870	5.5	CHT	fine
875	5.5	CHT	fine
880	5.5	CHT	fine
885	5.5	CHT	fine
890	5.5	CHT	fine
895	5.5	CHT	fine

Geological Descriptions

CHT v sim-abv bcng ft gy in mnr pt, tr dlm pyr, tr phosic sh strgs, incr mnr frac sfcs, tr pyr frac linings, infr com fr-p & mnr str g frac por, mnr v dull flor, n cut.

CHT var. pred dk brn, dull-sb trnsi, vary mody-v glauc, comy vary hd & dns, vary frm & cmbly lp, mnr-com gran tex, arg loc grd-g chty phosic mdst & tr sh lp, vary sdy-sltly lp, tr-loc mnr dlm pyr, mnr lt-dk brn trnsi-sb trnsi chit wi sl res lstre, rr-tr frac sfcs wi xln qtz & pyr linings, rr bit, infr tr p frac por, n/s.

CHT pred aa bcng decrly sl-mody glauc, pred dull & vary hd-frm wi com gran tex, v hd & dns lp, cmbly lp, sl slty-occy sdy lp, arg aa, rr frac sfcs aa, rr-tr p frac por, n/s.

CHT tan-ft gy, sl mot in mnr pt, pred v hd & dns, trnsi-sb trnsi, vary spiclr lp, tr-loc mnr scat glauc, vary slty lp, tr dlm pyr, rr frac sfcs as prev desc, rr bit, pred ft, infr tr-mnr p frac por, tr sp mod-dull yel flor wi v wk ques cut.

CHT pred aa bcng incrly slty & sl arg lp, incr tr frac sfcs wi occl qtz xtals & bit, tr mas pyr nods, incr tr-mnr phosic-vary chty glauc sh strgs, mnr m-dk brn vary glauc arg chit wi dull lstre & com gran tex, tr-mnr thn clin-arg vary chty f gr ss aa, tr qtzs glauc sltst strgs, infr tr-mnr p frac por, tr sp dull flor, n/s.

CHT lt-m brn, pred trnsi-sb trnsi, v hd & dns, sl mot in mnr pt, tr-loc mnr pel, sl-mody spiclr lp, decr tr dlm pyr, decr tr sh lams-strgs aa, rr-tr mlky-occy chalc qtz blebs-mots & frac heals, incr tr-mnr frac sfcs wi xln qtz & sp o str & bit, rr mic vugs, infr incr mnr-com p-fr frac por, mnr sp dull flor, tr p thn diff & atmg cut.

CHT pred m-dk brn wi dull-rs lstre, mnr m-ft brn-brn gy & sb trnsi in mnr pt, pred hd & dns, sl mot ip, pred arg grd-g chty mdst, tr mlky-occy chalc qtz blebs-mots & frac heals, decr tr frac sfcs aa, v rr mic vugs, infr tr-mnr p frac por, n/s.

CHT vary lt-m brn & ft gy, com brn pel & mnr mots, vary sl-loc v spiclr in v hd & dns, sh trnsi-trnsi vary sltly in

ROP (minum) Gas (units) 10 200

Dens: 1090 Vis: 39 pH: 10.0

00:00hrs 28-Oct-00 Drilling @ 858m

FOB: 20daN RPM: 50-motor BPM: 118 PP: 8000

Dens: 1095 Vis: 39 pH: 9.8

Trip for bit @ 876m

FOB: 15-17daN RPM: 50-motor BPM: 118 PP: 8000

Low mud level in shaker - low readings from 880-893m

Dens: 1090 Vis: 46 WL: 8.6 pH: 8.0

Trap adjustment @ 893m

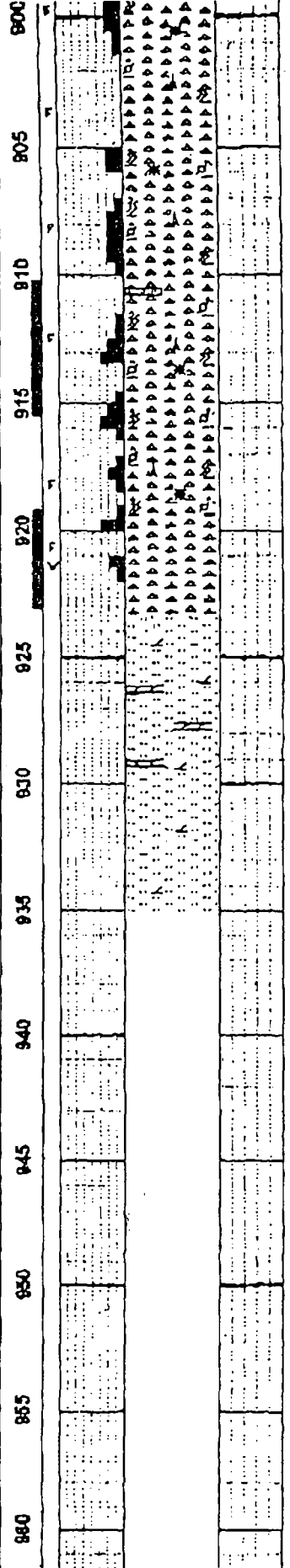
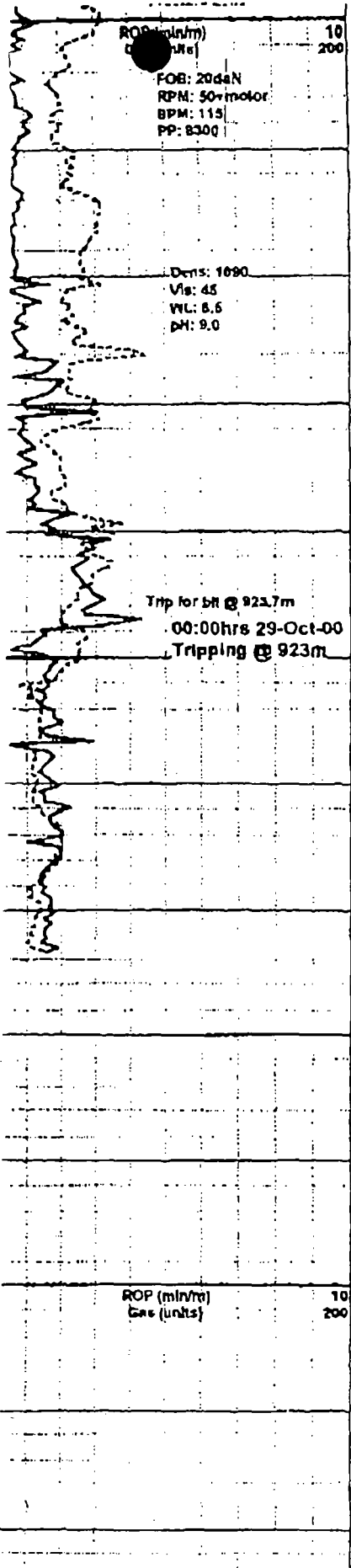
Fracture zone

UCL-29-00 07:24 AM

Gary Johansson

14036204647

P. 05



wt incr mnr milky-occy chalc qtz blebs-mots & frac heels,  
infr comy vary fracd, incr com planar frac sfc w/ drusy  
qtz xtals & rr sp-ptch o stn & bit, infr com var p-str g frac  
por, tr sp flor, rr p blmg & diff cut.

CHT sim-abv bcmg pred lt-m gy, com brn pel & mnr mots,  
v hd & dns, sb transl, vary splclr lp, vary siliclf w/ mnr  
milky qtz aa, incr com-abnt planar frac sfc w/ decr mnr  
drusy qtz, infr com-abnt var p-loc g frac por, tr sp p shows  
aa.

CHT as prev desc bcmg pred lt-v lt gy, pel & mot aa,  
Incrly siliclf lp w/ mnr-com milky-occy chalc qtz  
blebs-mots & frac heels, decr mnr-com frac sfc w/ mnr  
drusy qtz, infr decr com vary p-loc g frac por, rr sp bit & o  
stn, mnr sp v dull flor, tr-mnr v p wk cut, tr dk gy brn arg  
dolg slst stros.  
CHT sim-abv bcmg darker w/ incly abnt brn pel & com  
mots, vary silic w/ milky-chalc qtz aa, incr com frac sfc w/  
Incr drusy qtz, infr incr com-abnt var frac por aa, rr sp flor,  
rr-tr v wk ques cut.

Kindle @ 923.5m MD -550.6m SS