

Daily Geological Report

Paramount Resources Ltd.

Date: 27th October 2000

Country: Canada

Well: Paramount et al Mount Coty I-02

To	Attention	Fax Number
Paramount Resources Ltd.	Paul Price	(403) 266-6032

Report No: DGR 11	Rig: Akita Rig #51	Province: N.W.T.	LSD: I-02-60-20-123-30
Spud Date: 16-Oct-00	Days from Spud: 11	K.B. 372.95m aMSL	G.L. 387.80m aMSL

Hole Size: 222mm	Casing: 244.5mm @514m	Bit Type: F35 (Smith)	Hours Drilling: 13.75
Mud Type: Gel-chem	Drill Mode: mud-motor	M.W.: 1070	Average ROP: 14.8m/hr
Vis: 40	pH: 9.5	F.L.: -	Cl: -

24 Hour Operations Summary (00.00-24.00 hours)

Drill from 518-523m, LOT, drill 523-720m, POOH for bit, change out bit, RIH.		
Midnight Depth: 26-10-00	720m MD: -347.1m TVDSS	Progress: 204m

Status at 0600 hours (27th Oct)

Depth m MD KB	(TVD SS)	Formation
754m	-381.1m	Triassic
Present Operation: Drilling.		

Stratigraphy

Formation Tops	Sample (mKB)		Prognosed (mKB)		Log (mKB)		Hi/Lo (-)
	MD	TVDSS	MD	TVDSS	MD	TVDSS	
Lepine	92.5	280.5	168.4	204.6	-	-	75.9
Scatter	376.6	-3.7	452.4	-79.4			75.8
Garbutt	517.0	-144.1	512.5	-139.6			-4.5
Garbutt Radioactive Zone	637.2?	-264.3	635.5	-262.6			-1.7
Bullhead	658.5?	-283.6	649.0	-276.1			-7.5
Chinkeh Siltstone	705.5	-332.6	706.0	-333.1			0.5
Chinkeh Sand	708.5	-335.6	709.5	-336.6			1.0
Triassic	719.0	-346.1	720.5	-347.6			1.5

Next Operatfon (06:00 hours onwards): Drill ahead.

Remarks:

Good morning, Paul. The tops came in quite close to the original revised prognosis, which are the numbers used above. The exception is the Bullhead but both that pick and the Radioactive Zone pick are quite tentative as this section consists entirely of shale and there is no clear lithological distinction. The amount of bentonite through the Radioactive Zone is trace at best and quite rare in the upper part. As we discussed last night, the Chinkeh has fair to good reservoir-quality at this location but is wet. There were no gas shows, cut or fluorescence through the zone.

We are currently drilling ahead in the Triassic after getting back underway at just after 01:00hrs. The ROP is between -6-10m/hr. We should penetrate the Fantasque before noon.

Regards

G. Johansson Wellsite Geologist

Curve Track 1

ROP (min/m)
Gas (units)

Porosity

Lithology

Grain Size

Geological Descriptions

Depth
507
510
515
520
526
530
535
540
545
550
555

Shaker box problems restricting gas readings from 507-511m.

Oct 22-26 Ream run & cement casing, nipple up, pressure test.
TD for surface casing pilot hole @ 11:30hrs
Drill-out cement @ 22:43hrs 25-Oct-00
00:00hrs 26-Oct-00 Drilling @ 518m.

Increase FOB

FOB: 25daN
RPM: 40+ motor
SPM: 116
PP: 8400'

Dens: 1000
Vis: 28
pH: 8.0

Increase FOB

Note scale change

Scale Change
ROP (min/m) 200
Gas (units)

ROP (min/m)
Gas (units) 200

Dens: 1000
Vis: 28
pH: 8.0

SS lt-m brn, vt gr. qtzs w/ mnr dk spks & ltc grs, mody glauc, rr-tr mica flks, w srt, ang-sb ang, vary silty, occl silty lams, pred cin, sl-mody arg in mnr pt, pred mody-mody p lnd, comy vary crmbly, silc cmt & tr sp calc cmt, tr intsl pyr, tr qtz ovghs, com tt-2% por, mnr-com scat 3-5% por, incr tr 5-7% por, sl ptchy partly dd o stn, mnr-loc com sp bit, com dull yel-yel gn flor, com-abnt p-fr yel stmg & diff cut, decr mnr thn lntbd sh aa.

Garbutt @ 517.0m MD -144.1m SS

SLTST w/ lntbd SH; SLTST m-dk gy brn, qtzs w/ com dk spks, rr-tr glauc, pred vary arg, com arg ptgs, tr sdy, mody-w lnd, silc cmt w/ var arg mlx, tt-2% por, n flor, com p slo stmg & diff cut; SH dk gy, v frm, blk-y-sb pty, sb fls lp, vary silty & mm, rr fram pyr.

SLTST silm-abv, m-dk gy brn, qtzs w/ mnr-com dk spks, sl-mody glauc, tr mica flks, rr-tr carb deb, pred vary sl-v arg occy grd-g-v silty sh lams & strgs, cin in mnr pt, mnr arg ptgs, loc sdy grd-g-mnr silty ss strgs-lams, mody-w lnd, silc cmt & arg mlx/cmt, pred tt-2% por, mnr str 2-5% por, rr sp bit, n flor, tr-mnr v p slo stmg & diff cut, tr-mnr sh strgs aa.

SLTST as prev desc w/ decr tr 2-5% por & decr tr cut aa, incr mnr thn sh lntbds & strgs-lams aa.

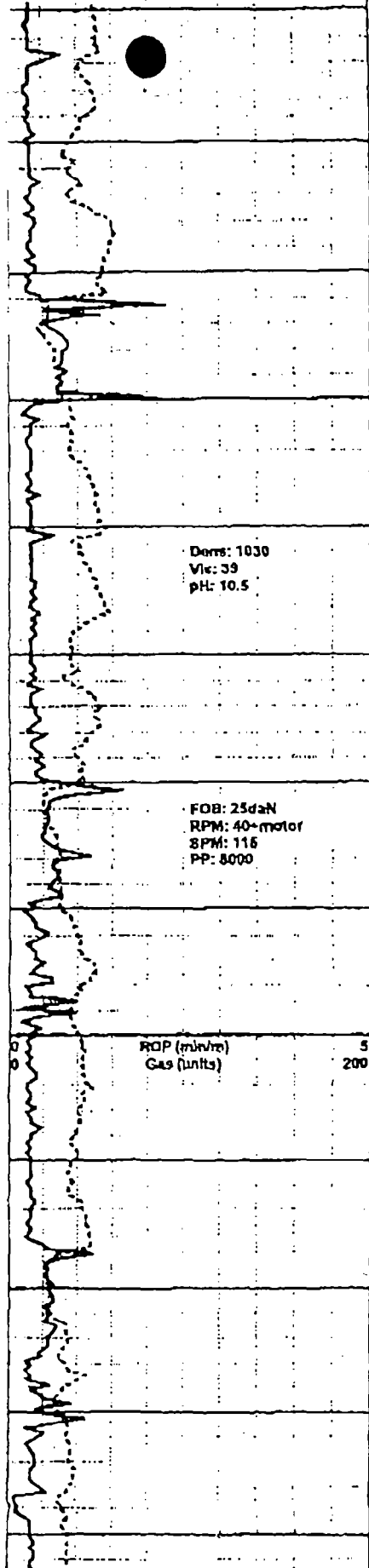
SLTST w/ mnr lntbd SH; SLTST silm-abv, m-dk gy brn, qtzs w/ mnr-com dk spks, sl-mody glauc, tr mica flks, rr-tr carb deb, pred vary sl-v arg occy grd-g-v silty sh lams & strgs, com arg ptgs, decrly tr-mnr sdy, mody-w lnd, silc cmt & arg mlx/cmt, pred tt-2% por, n flor, decr tr v p slo cut aa; SH dk gy, sb blk-y-sb pty, vary silty & mm, sb fls.

SLTST w/ lntbd SH; SLTST silm-abv, m-dk gy brn, qtzs w/ mnr-com dk spks, sl-mody glauc, tr mica flks, rr-tr carb deb, pred vary arg occy grd-g-v silty sh lams & strgs, com-abnt arg ptgs, tr sdy, mody-w lnd, silc cmt & arg mlx/cmt, pred tt-2% por, n flor, decr rr v p slo cut aa; SH as prev desc.

OCT-27-00 07:27 AM

Gary Johannson

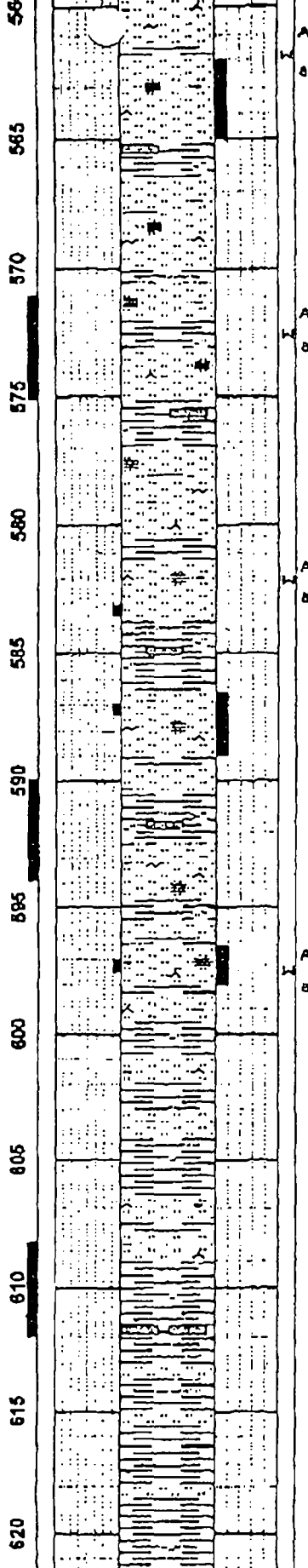
14036204647



Dens: 1030
Vis: 39
pH: 10.5

FOB: 25daN
RPM: 40-motor
SPM: 116
PP: 8000

ROP (ml/hr)
Gas (units)



SLTST & SH; SLTST dk-m gy & gy brn, qtzs w/ mnr-com dk spks, decry sl-mody glauc, tr mica flks, rr carb deb, predy vary arg, tr clin, com-abnt arg ptgs & lams, mody-w ind, silic cmt & arg mtx/cmt, tt-2% por, n/s; Intbd & Intlamd SH sim-abv, dk gy, vary frm, sb pty-pty, mnr sb blk, fis-sb fis, vary silty & mm grd-g v arg sltst ip.

SLTST w/ Intbd SH; SLTST as prev desc, dk-m gy & gy brn, qtzs w/ mnr-com dk spks, decry sl-mody glauc, tr mica flks, rr carb deb, predy vary arg, tr clin, com-abnt arg ptgs & lams, mody-w ind, silic cmt & arg mtx/cmt, tt-2% por, n/s; Intbd & Intlamd SH sa.

SH w/ Intbd SLTST; SH sim-abv, dk gy, vary frm, sb pty-pty, fis-sb fis, mm, sl-v silty comy grd-g to & Intlamd w/ arg sltst; SLTST pred dk gy, qtzs, mnr dk spks, pred sl glauc, vary sl-v arg grd-g from sh ip, abnt arg ptgs & lams, mody-w ind, silic & arg mtx-cmt, rr sp calc cmt, tt-2% por, n/a.

SLTST w/ Intbd SH; SLTST as prev desc becng decry arg ip, tt-2% por, n/s; SH as prev desc.

SH w/ Intbd SLTST; SH dk gy, vary frm-loc hd, brtt ip, pty-sb pty, mm, fis-sb fis, sm & nonsily ip, cl-v silty ip w/ arg sltst lams, rr fram pyr; SLTST dk-m gy & gy brn, qtzs w/ mnr-com dk spks, pred sl glauc, tr mica flks, pred sl-mody arg, abnt arg ptgs, tr sdy, vary mody p-v w ind, pred silic & var arg mtx/cmt, tr-loc mnr str calc cmt, tt w/ str p por, n flor, tr-mnr v p slo blng cut.

SH w/ mnr Intbd SLTST; SH as prev desc; SLTST as prev desc becng tt w/ n/s.

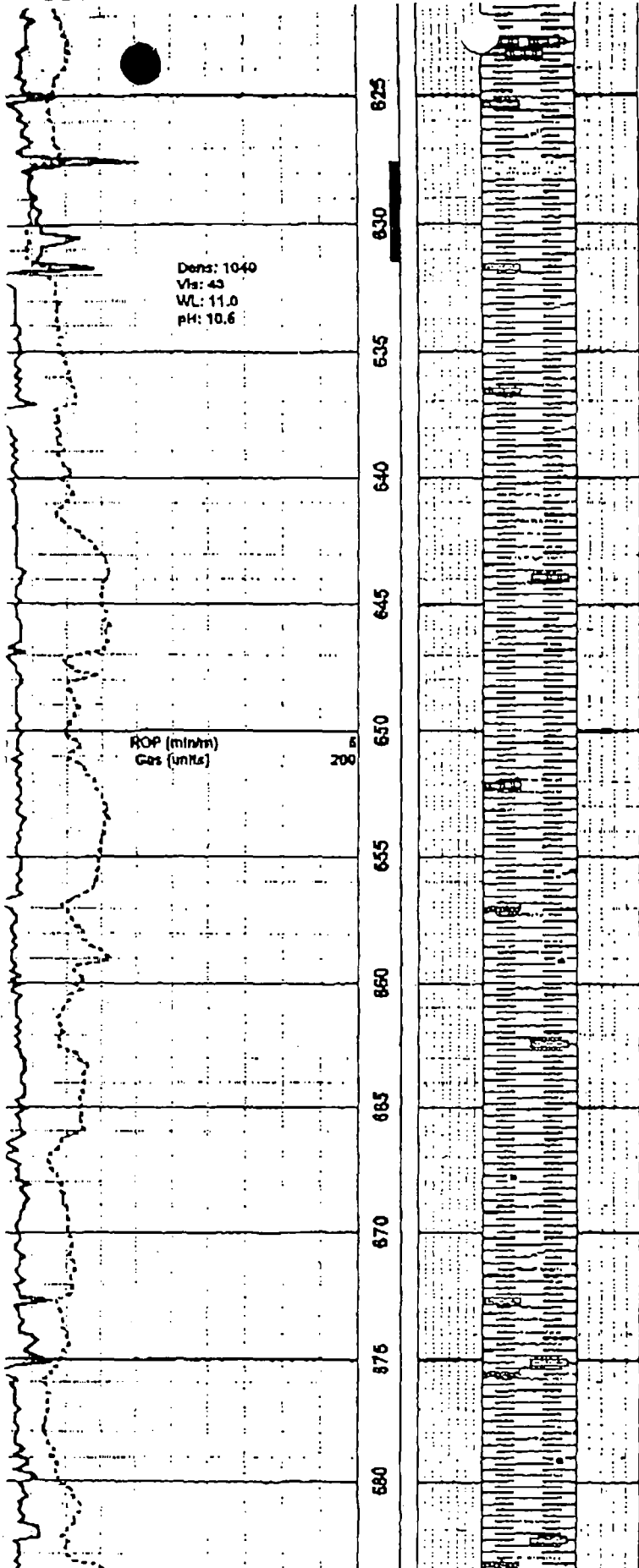
SH dk gy, vary frm, brtt ip, pty-sb pty, fis, comy sm & fnty mm, vary silty ip w/ mnr sltst lams, mnr thn sltst Intbds & surge-lams aa.

OCT-27-00 07:28 AM

Garv Johannson

14036204647

P. 04



SH as prev desc, dk gy, vary frm, brt ip, pty-sb pty, fis, comy sm & fnty mm, vary stly ip wi mnr sltst lams. mnr thn sltst intbds & strgs-lams aa.

Garbutt Radioactive Zone @ 537.2m? MD -264.3m SS

SH dk gy, frm, brt ip, pty-sb pty, mnr sb blk, fis-sb fis, pred sm & fnty mm, sl-mody stly in mnr pt, tr sltst lams & strgs, rr crm-lt gy sl tuffac bent.

Bullhead @ 656.5m? MD -283.6m SS

SH slm-abv, dk gy, mnr blk, vary frm-loc sft, pty, brt ip, fis, pred sm & fnty mm, sl stly in mnr pt wl tr arg sltst lams, carb ip, rr-tr carb-coaly deb, v rr root cast, incr rr-tr crm-lan bent, sl tuffac ip.

SH dk gy, frm-loc sft, pty-sb pty, mnr sb blk, brt ip, fis-sb fis, pred sm & fnty mm, sl stly in mnr pt wl tr arg sltst lams, decry carb in mnr pt, decr rr bent aa.

SH slm-abv, dk gy, vary frm-loc sft, pty-sb pty, mnr sb blk, brt in mnr pt, fis-sb fis, comy sm & fnty mm, sl stly ip, incr tr arg sltst lams, incry vary carb in mnr pt, incr tr crm-lt gy sl tuffac bent aa, rr pyr, rr-tr slt.

SH dk av-blk, vary frm-ocv sft, comv brt, pty-sb pty, fis.

OCT-27-00 07:28 AM

Gary Johannson

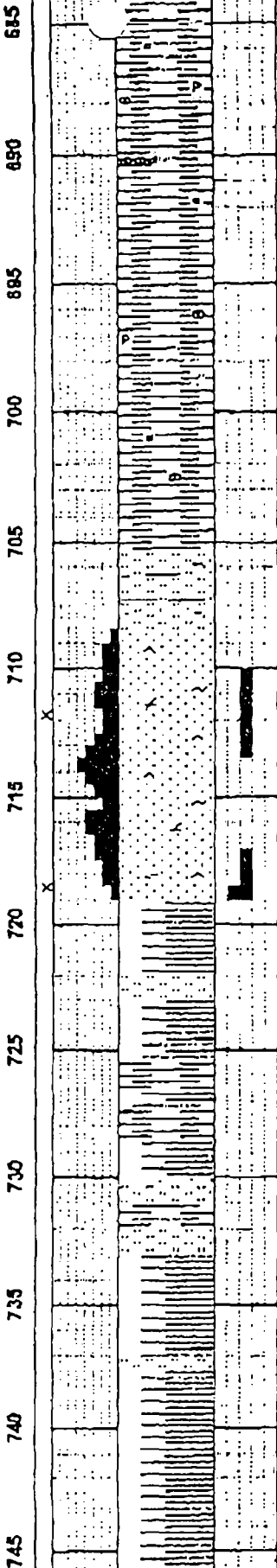
14036204647

Dens: 1050
Vis: 42
WL: 10.0
pH: 10.0

Control drill from 700-719m

ROP (min/hr) 5
Gas (units) 200
FOB: 12-15daN
RPM: 40+me/or
SPM: 113
PP: 7300

00:00hrs 27-Oct-00
Tripping @ 720m



pred sm & fnty mm, sl -ly lp, vary carb lp, tr scat
carb-coaly deb, tr pyr s, tr bent aa, incr r-r sid.

SH dk gy-mnr blk, frm-occy srt, plty-sb blk, brit lp, fls-sb
fla, comy sm & fnty mm, sl slty lp, carb in mnr pt, tr pyr.
sl sb wxy lp, r-tr pyrzd fib coal frags, tr pyr noda, incr tr
sid occy grd-g-side siltst lams, v r bent.

Chinkeh Siltstone @ 705.5m MD -332.6m SS

SLTST pred dk gy-gy bm, qtzs, mody-loc v glauc, pred
mody-w arg grd-g-sity sh strgs, mody p-mody w ind, silc &
sp dolc cmt wl var arg mtd/cmt, tr, n/s.

Chinkeh Sand @ 708.5m MD -335.6m SS

SS k tan-v R gy, M-uf gr, tr uvf & lm grs, v qtzs wl tr-mnr
glau & r lic grs (sb qtzaren), w-v w srt, ang-sb ang, var
indn; comy p ind & cmbly, mody ind lp, disagg lp,
mnr-loc com sp-ptchy silc cmt, tr-mnr sp dolc cmt,
com-abnt qtz ovghs, tr-loc mnr sp ill, var por; pred fr-g
(var 8-14%), mnr-com 4-7% por, tr sp dd o etn, n cut or
flor.

SS as prev desc bcmg sl stly wl incr mnr vf grs, inchy
m-m w ind, incr sp dolc cmt, decr mnr qtz ovghs, decr
por; com p-fr (4-7%), mnr-com ti-3% por, n/s.

Triassic @ 719.0m MD -346.1m SS

OCT-27-00 07:29 AM

Cary Johansson

14036284647

P. 06

ROP (min/m)
Gas (units)

5
200

750

755

760

765

770

775

780

785

790

795

800

805

ROP (min/m)
Gas (units)

5
200

