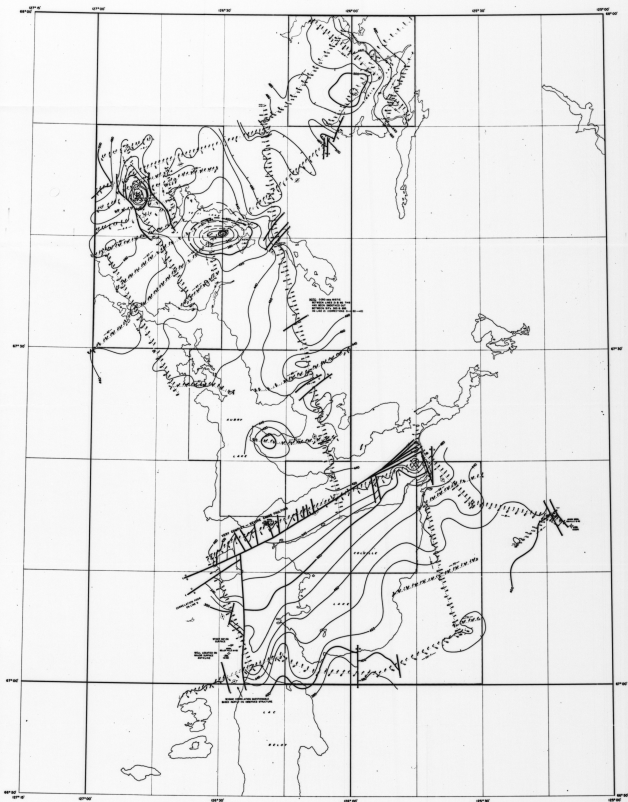


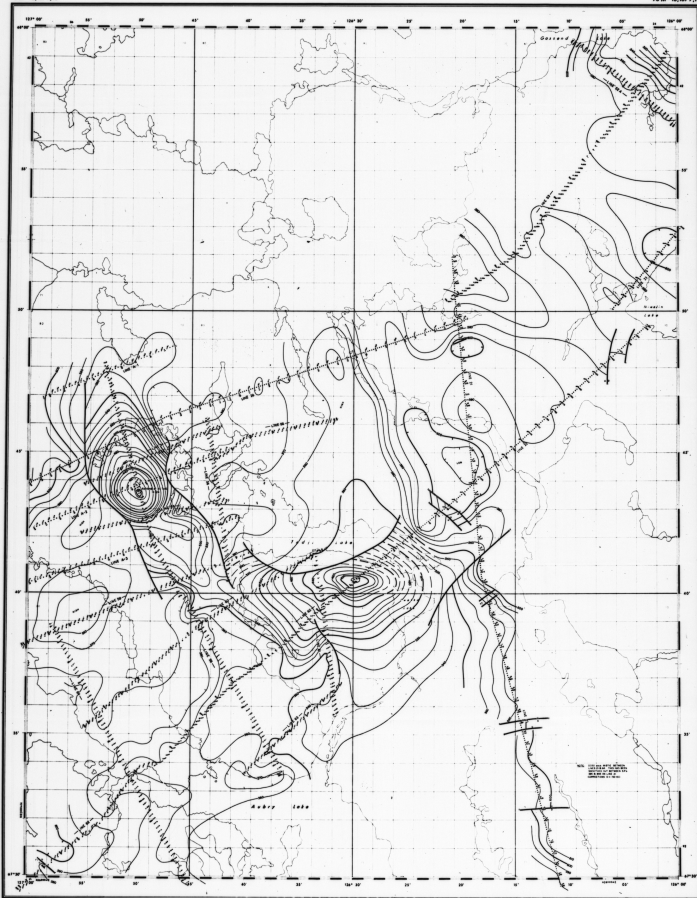
052-06-06-005-1



1. 1:50,000 scale map, 1960-61
2. 1:50,000 scale map, 1960-61
3. 1:50,000 scale map, 1960-61
4. 1:50,000 scale map, 1960-61

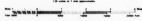


052-06-06-005
ARLARD CO. CANADA LIMITED
COLVILLE LAKE AREA - N.W.T.
THE STRUCTURE MAP
BASE PALEOZOIC CARBONATES
GEOLOGICAL MAP
GEOLOGICAL MAP
GEOLOGICAL MAP



TEDJI LAKE
DIRECT OF MINING
NORTHWEST TERRITORIES

SCALE 1:50,000



North Arrow

Magnetic Declination

Magnetic Declination

Magnetic Declination

Magnetic Declination



90 M-15,16/9,10

N.T.

N.T. & N.W.T. PROSPECTING ACT, 1978

N.T. & N.W.T. PROSPECTING ACT, 1978

ASHLAND OIL CANADA LIMITED

COVILLE LAKE AREA - N.W.T.

THE PROVINCE OF

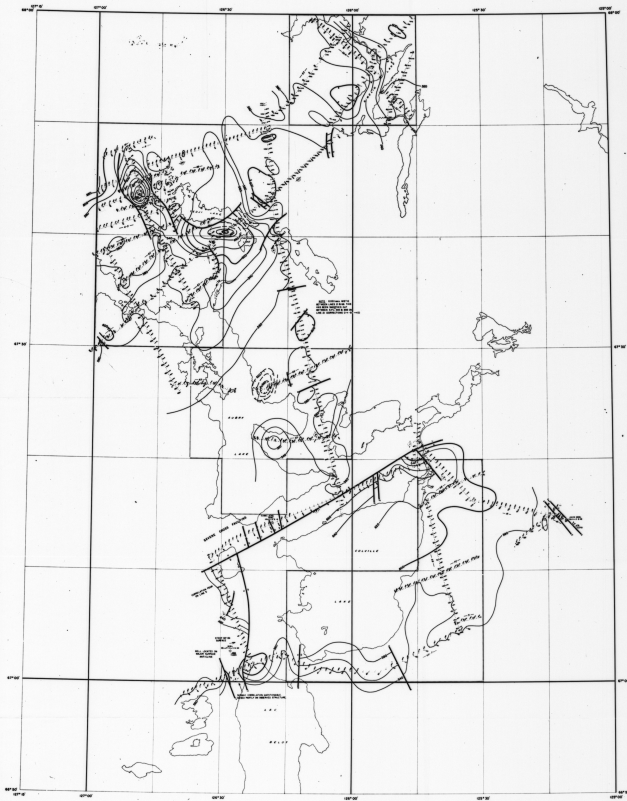
PRECAMBRIAN

N.T. & N.W.T. PROSPECTING ACT, 1978

N.T. & N.W.T. PROSPECTING ACT, 1978

N.T. & N.W.T. PROSPECTING ACT, 1978

052-06-06-005



NOTES:
1. This map is based on the geological map of the Colville Lake area, Northwest Territories, published by the Geological Survey of Canada, 1964.
2. The map is a simplified version of the original map, showing only the Precambrian structures.
3. The map is not to scale.

Scale: 1:50,000

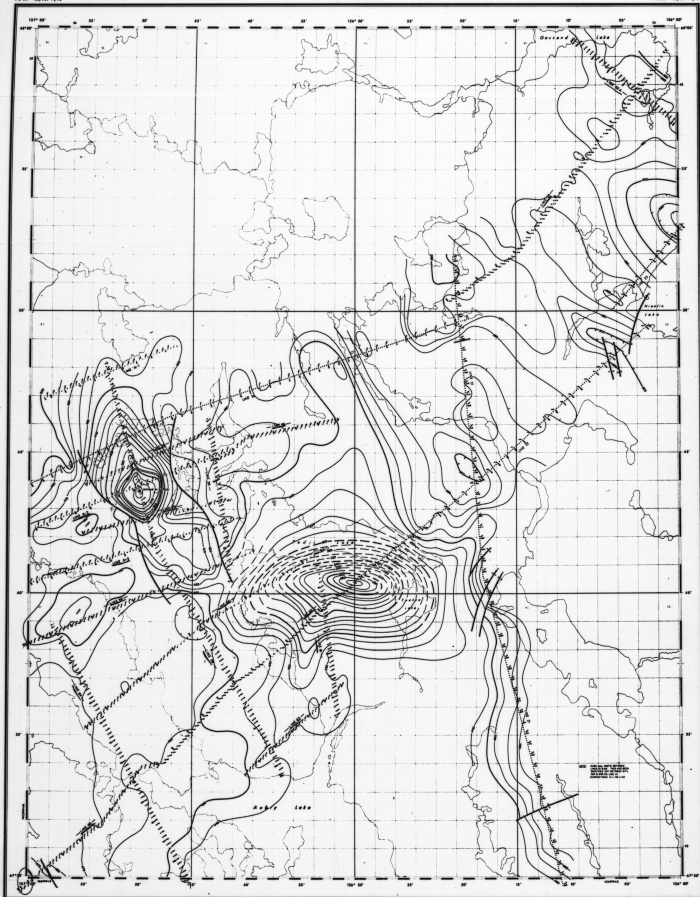
052-06-06-005

ROYALTY ON CANADA LIMITED

COLVILLE LAKE AREA - NW.T

PRECAMBRIAN

Geological Survey of Canada
Ottawa, Ontario



Geological Survey of Canada
Geological Map of Canada
Geological Map of Canada
Geological Map of Canada



90 M - 13,16/9,10
Scale 1:25,000

Geological Survey of Canada
Geological Map of Canada
Geological Map of Canada
Geological Map of Canada

90 M - 13,16/9,10
Scale 1:25,000

90 M - 13,16/9,10
Scale 1:25,000

90 M - 13,16/9,10
Scale 1:25,000

90 M - 13,16/9,10
Scale 1:25,000