

GEOPHYSICAL REPORT - PERMITS 1404 & 1405  
CAMERON HILLS - NORTHWEST TERRITORIES

An airborne magnetometer survey was conducted over the above permits from November, 1957 to January, 1958. The survey was conducted by Aeromagnetic Surveys Ltd. Flight lines were flown in an E-W direction at 1 mile intervals. N-S tie lines were flown every 6 miles. Flight altitude was maintained at 3500' A.S.L.

A map showing the results of this survey is attached to this report. The data have been contoured on 10 gamma intervals.

The major trend of the contours is in general a North South direction. The gradient is from high values on the east to lower values on the west. This gradient is very regular except for a zone approximately 4 miles wide which extends N-S through the centre of both permits.

The anomalous condition which appears on this map is the change in the contour interval which appears as a terracing in the normal contour interval.

This could be interpreted as a series of basement highs at a subsea depth of approximate -3000' trending in a N-S direction.

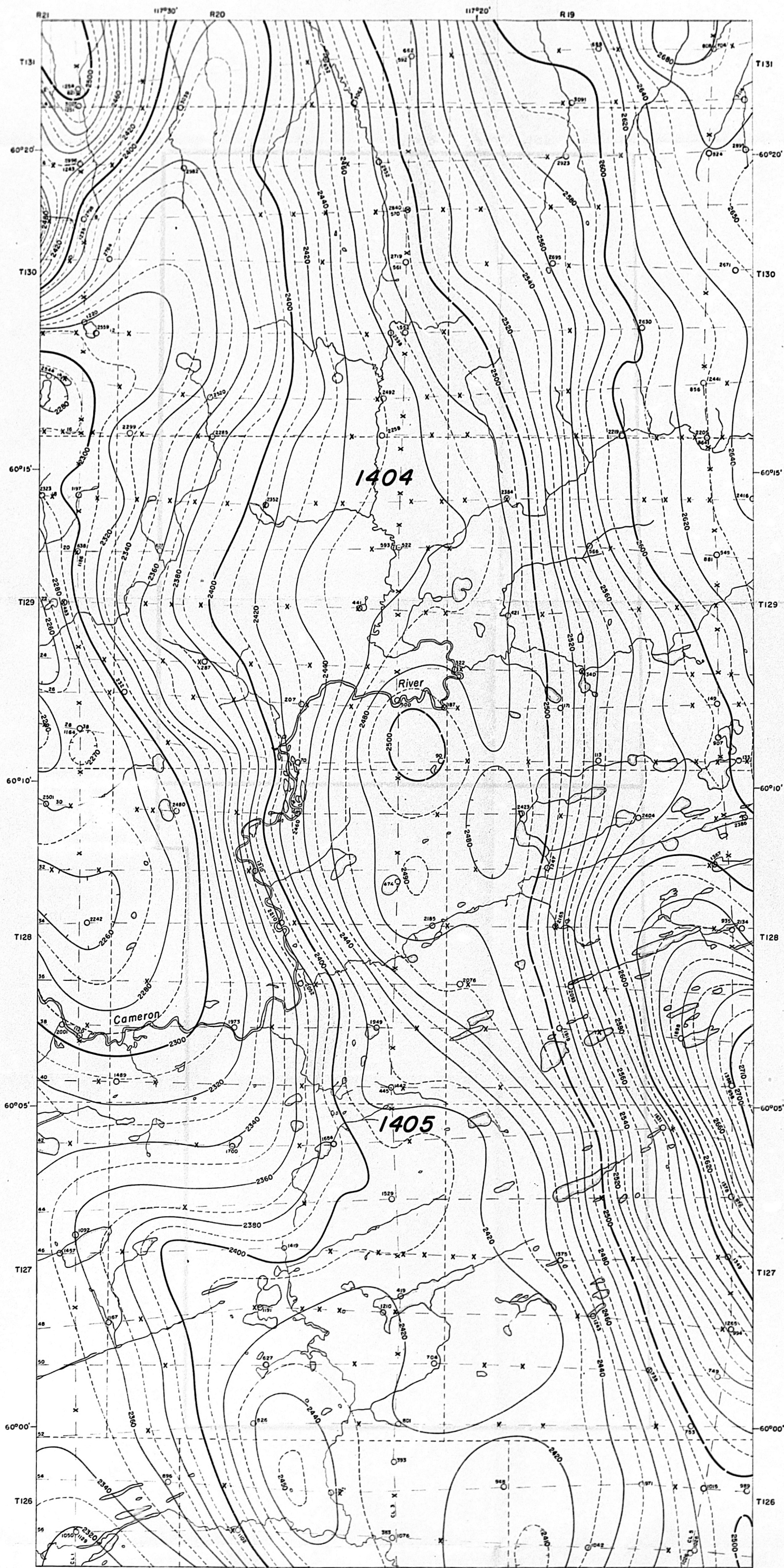


D. R. Mett  
Chief Geophysicist  
Union Oil Company of California

December 4th, 1958.



UNION OIL COMPANY OF CALIFORNIA  
AIRBORNE MAGNETOMETER SURVEY



Flown and Compiled in NOVEMBER 1957-JANUARY 1958

28-6-4-2

Produced in Canada by AEROMAGNETIC SURVEYS LIMITED, TORONTO

CONTOUR INTERVAL ..... 10 GAMMA  
MEAN FLIGHT LINE SPACING ..... 1 MILE  
ALTITUDE ..... 3500 FEET ABOVE SEA LEVEL  
500 GAMMA CONTOUR .....  
100 GAMMA CONTOUR .....  
20 GAMMA CONTOUR .....  
10 GAMMA CONTOUR .....  
MAGNETIC LOW .....  
FIDUCIAL POINTS ..... 3550 O  
FLIGHT LINES ..... 2 to 55  
INFLECTION POINTS ..... -X- -X-

CAMERON HILLS, N.W.T

SCALE  
1 inch to 1 Mile

