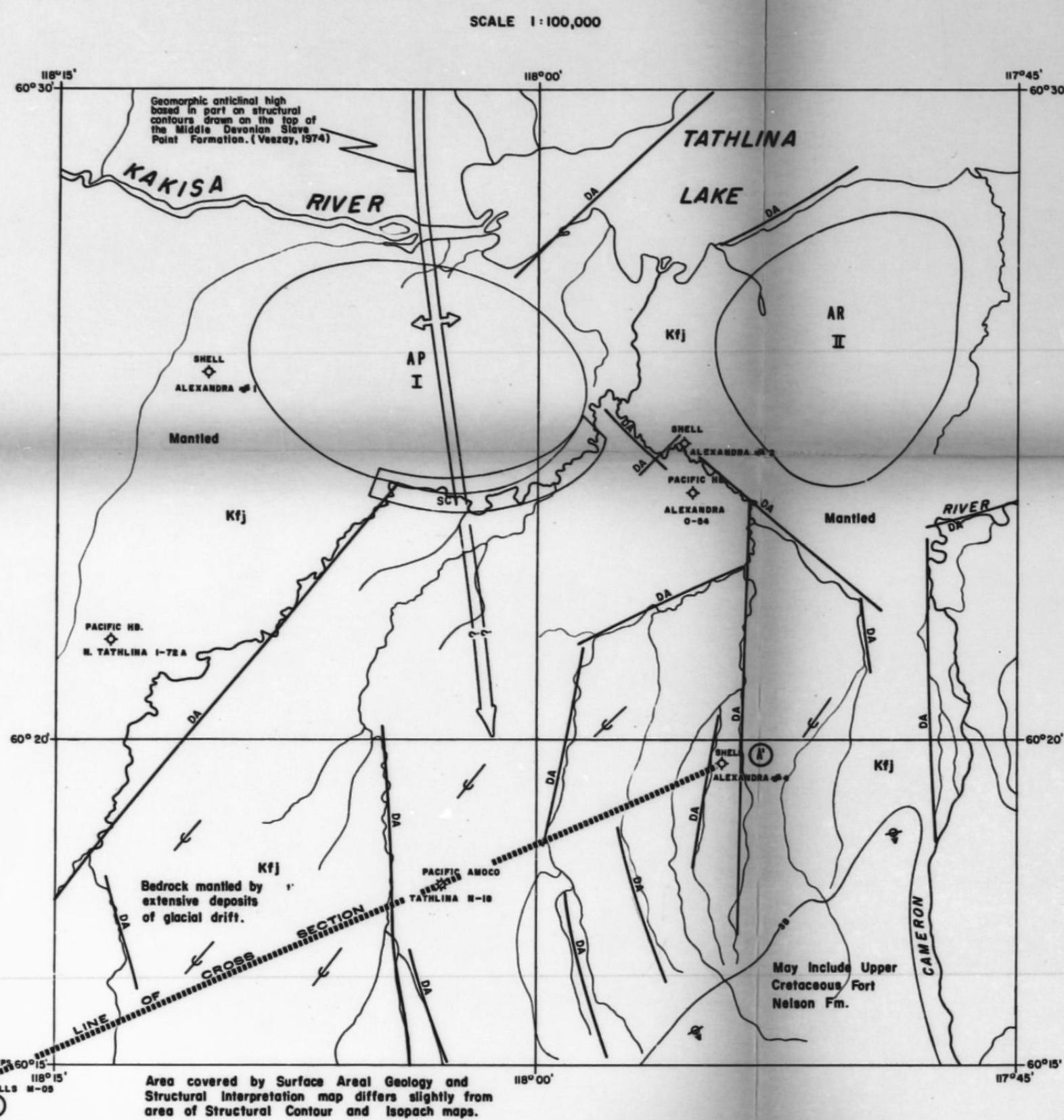


SURFACE AREAL GEOLOGY AND STRUCTURAL INTERPRETATION MAP OF THE PACIFIC AMOCO TATHLINA N-18 GAS DISCOVERY IN THE GREAT SLAVE PLAIN



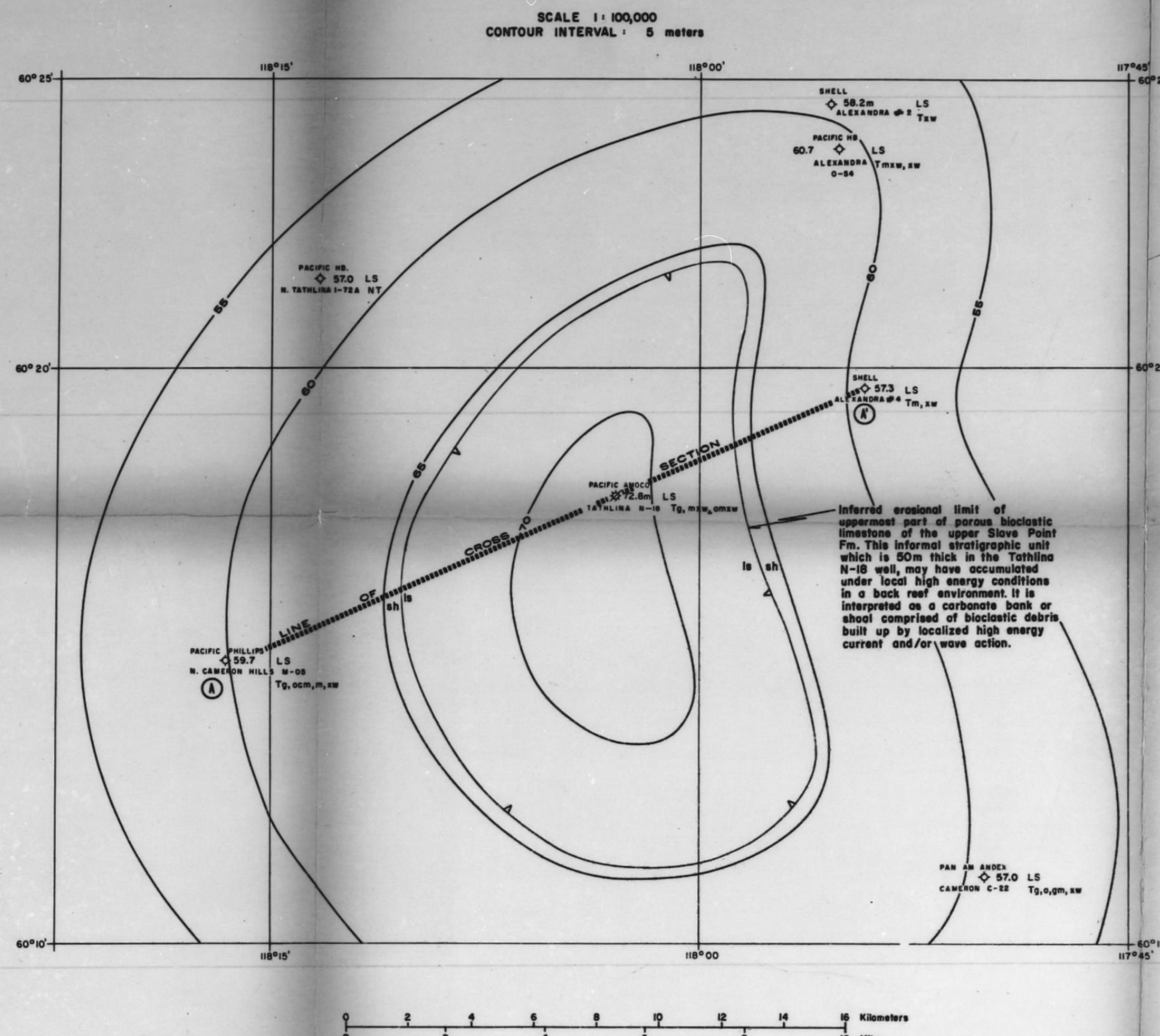
LEGEND

LOWER CRETACEOUS

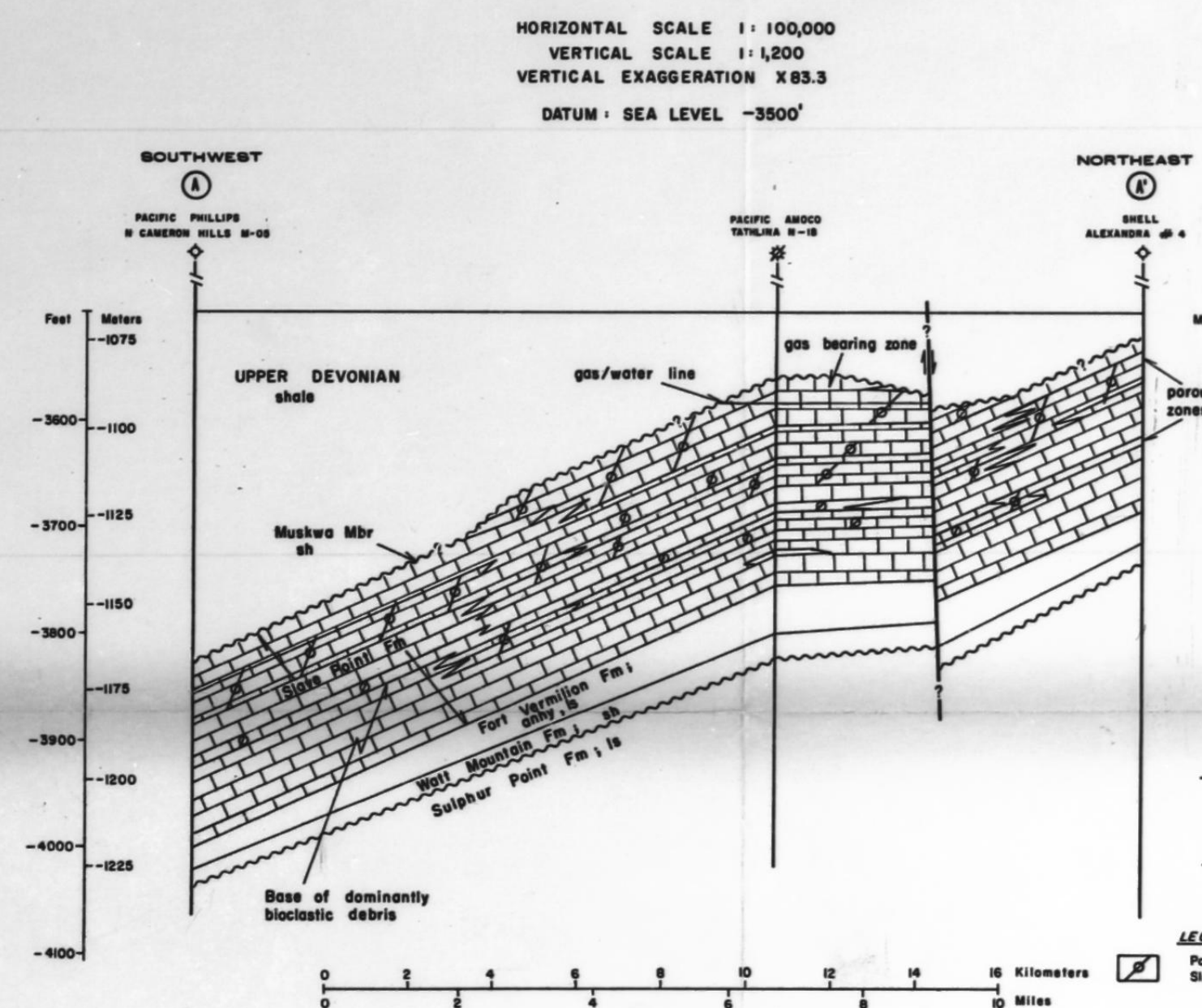
Part St. John Bay, St. May include Upper Cretaceous Fort Nelson Fm. St.

- SYMBOLS**
- Geographic symbols: Lake, River, Mountain, etc.
 - Geological symbols: Fault, Fold, etc.
 - Structural symbols: Fault, Fold, etc.
 - Well symbols: Well, etc.

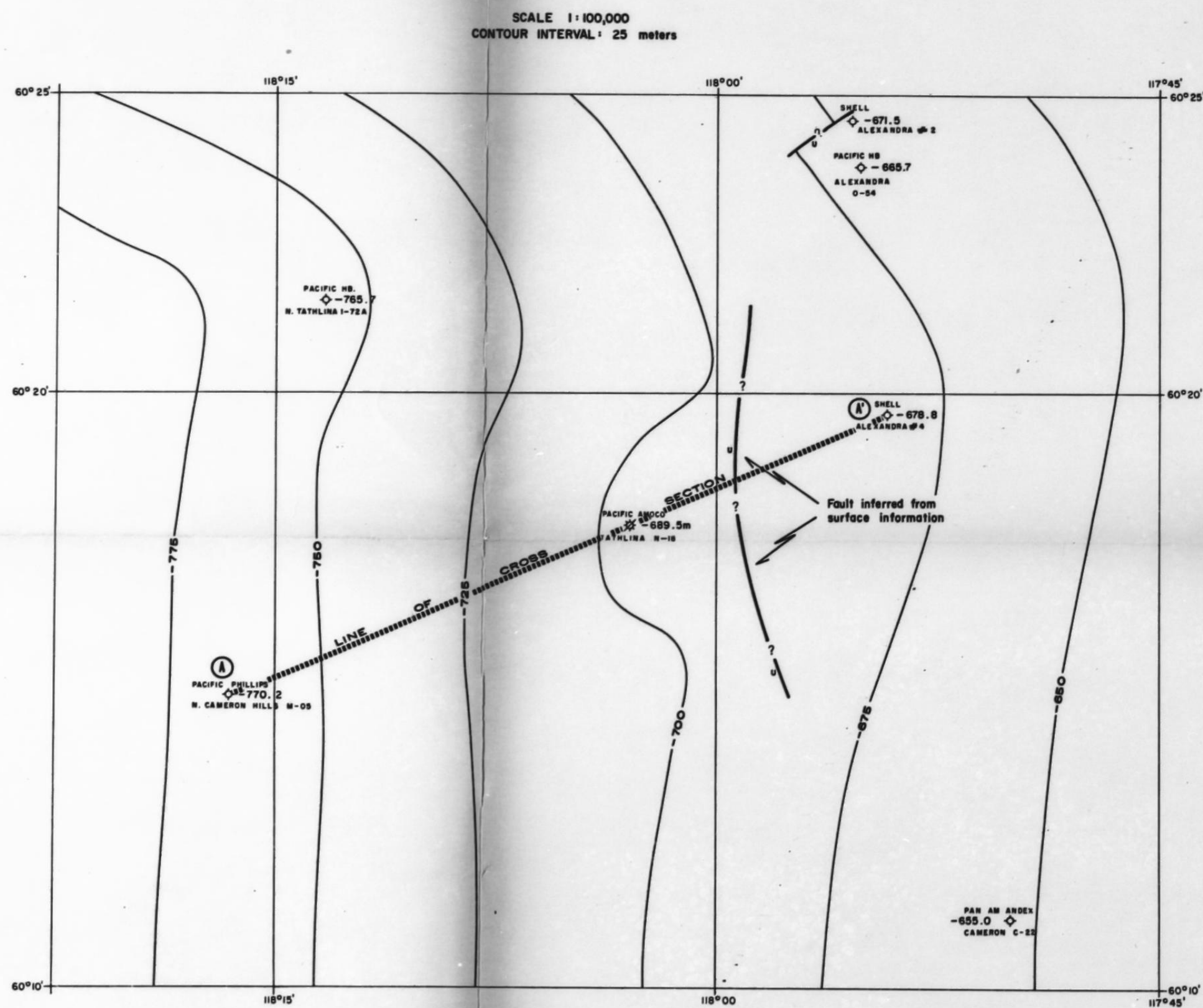
ISOPACH MAP TOP OF SLAVE POINT FORMATION TO TOP OF WATT MOUNTAIN FORMATION



STRATIGRAPHIC AND STRUCTURAL CROSS SECTION A-A'



STRUCTURAL CONTOUR MAP ON TOP OF SLAVE POINT FORMATION

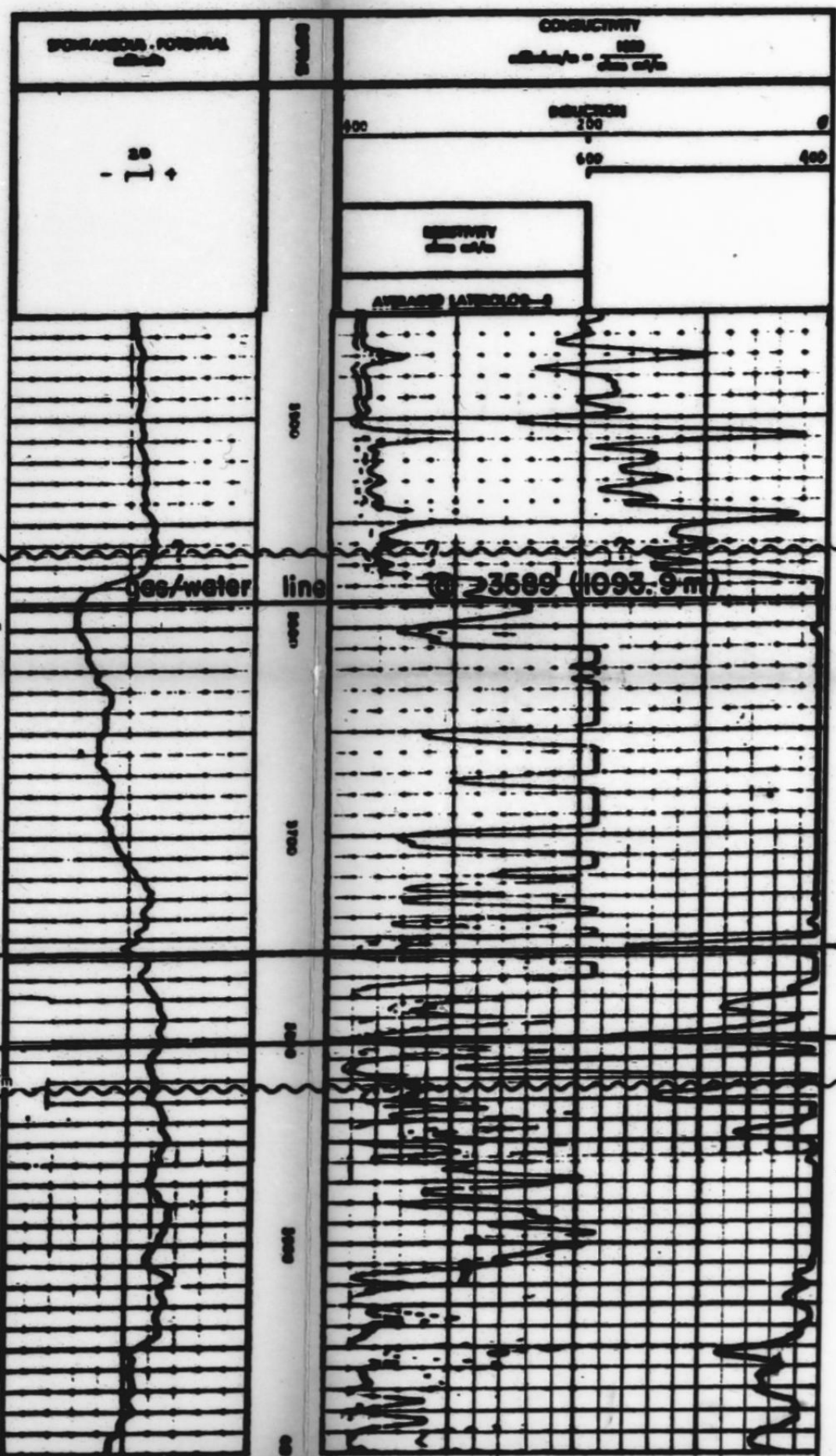


STRUCTURAL GEOLOGY OF THE PACIFIC AMOCO TATHLINA N-18 GAS DISCOVERY GREAT SLAVE PLAIN

The Great Slave Plain is situated in the northern Mackenzie Basin and is characterized by the Middle Devonian carbonate sequence. This sequence is overlain by the Slave Point Formation, which is a thick sequence of sandstone and shale. The Slave Point Formation is characterized by its thickness and its structural complexity. The map shows the distribution of the Slave Point Formation and its relationship to the underlying Middle Devonian sequence. The Slave Point Formation is a thick sequence of sandstone and shale, which is a characteristic feature of the Great Slave Plain. The Slave Point Formation is a thick sequence of sandstone and shale, which is a characteristic feature of the Great Slave Plain. The Slave Point Formation is a thick sequence of sandstone and shale, which is a characteristic feature of the Great Slave Plain.

STRATIGRAPHIC CORRELATION OF THE PACIFIC AMOCO TATHLINA N-18 GAS DISCOVERY WELL

The Pacific Amoco Tathlina N-18 discovery well is located in the Great Slave Plain. The well is a vertical well, which is a characteristic feature of the Great Slave Plain. The well is a vertical well, which is a characteristic feature of the Great Slave Plain. The well is a vertical well, which is a characteristic feature of the Great Slave Plain. The well is a vertical well, which is a characteristic feature of the Great Slave Plain. The well is a vertical well, which is a characteristic feature of the Great Slave Plain. The well is a vertical well, which is a characteristic feature of the Great Slave Plain.



STRUCTURAL ELEVATIONS



VEEZAY STRIP LOG

