

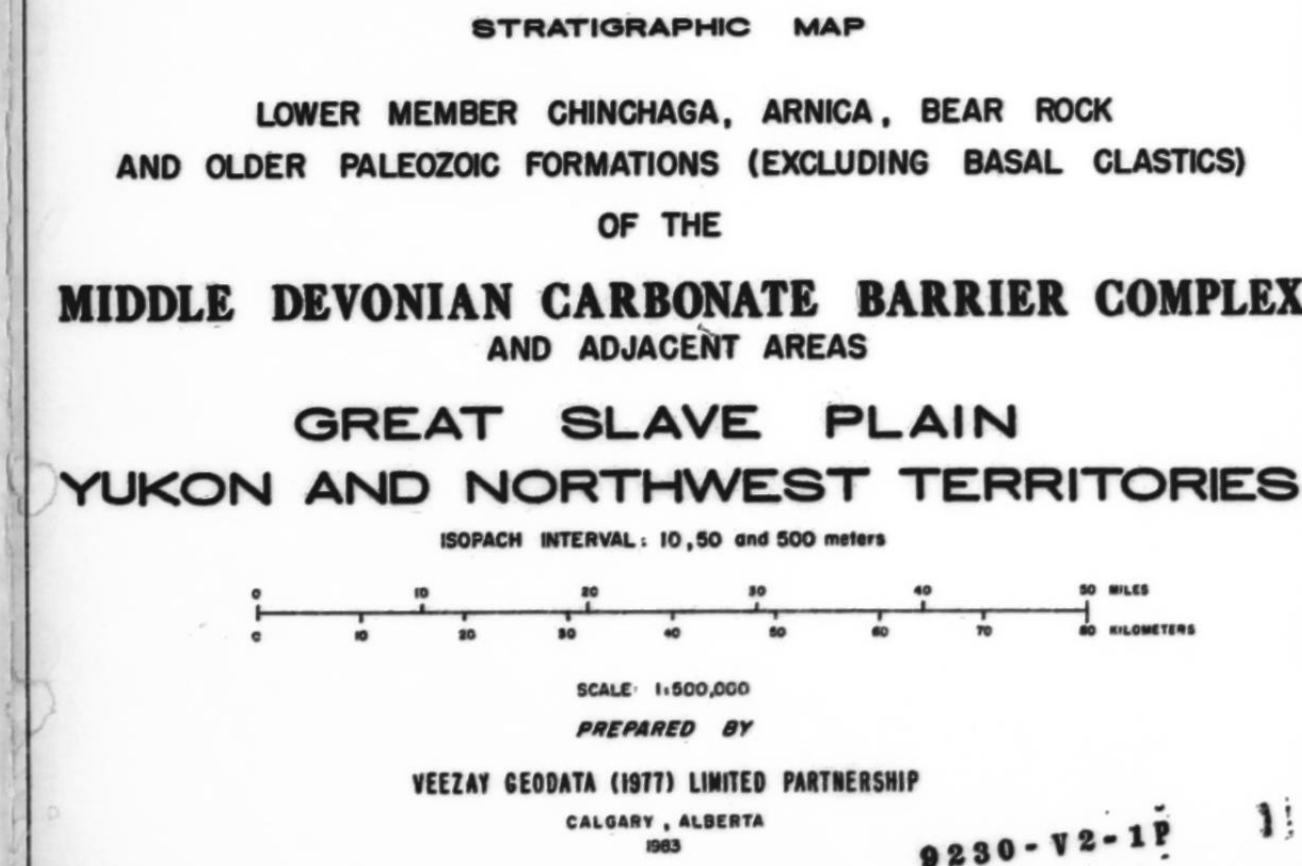
WELL	SYMBOLS
------	---------

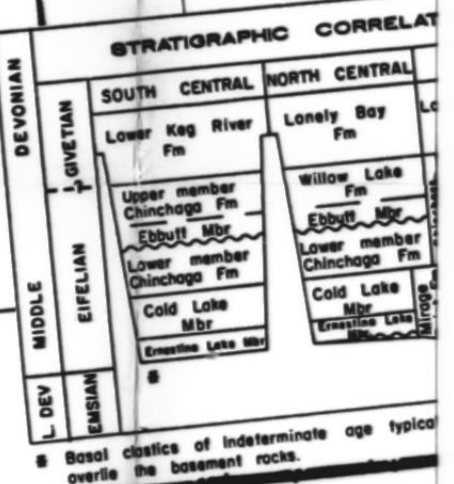
f fresh.

Head	Headless
------	----------

- | | | |
|-----|----------|--|
| Sun | Sunblood | |
|-----|----------|--|

- and secondary immunoglobulins





WELL SYMBOLS

WELL SYMBOLS	
◆ 280	Thickness in meters of unit completely penetrated in well.
◆ 280*	Unit not completely penetrated, minimum thickness indicated.
◆ 300	Estimated thickness in meters.
◆ 320	Thickness in meters of unit <i>interfering</i> due to nonvertical information or distance boundary encroachment.
◆ [—X—]	Thickness in meters from source through to petrophysical log.
◆ ○	Unit absent because of nondeposition or erosion.
◆ OR	Other rocks at the surface.
◆ II	Information not available, incomplete or not examined.
◆ NR	Unit not reached.
◆	Well location or drilling well.
◆	Standing well.
◆	Water injection, thermal observation, etc.
◆	Dry and abandoned well.
◆	Oil well.
◆	Abandoned oil well.
◆	Capped or suspended oil well (shut-in).
◆	Gas well.
◆	Abandoned gas well.
◆	Capped or suspended gas well (shut-in).
◆	Oil and gas well.
◆	Abandoned oil and gas well (shut-in).
◆	Capped or suspended oil and gas well (shut-in).
◆	Directionally drilled or deviated well.
◆	Significant gas show.
◆	Oil seeping.

DRILLSTEM TEST ABBREVIATIONS

DRILLSTEM	TEST	ABBREVIATIONS
T	Tested.	
f	fresh.	
g	gas, gassy, gas-cut.	
m	mud, muddy.	
o	oil, oily, oil-cut.	
s	sulphurous.	
w	water, watery, water-cut.	
x	soft, sooty, (incl. brockish).	
NATm	Not adequately tested due to m	Unless otherwise indicated unit not tested.
NAT	Not adequately tested.	

SAMPLE	CONTROL	STATIONS
--------	---------	----------

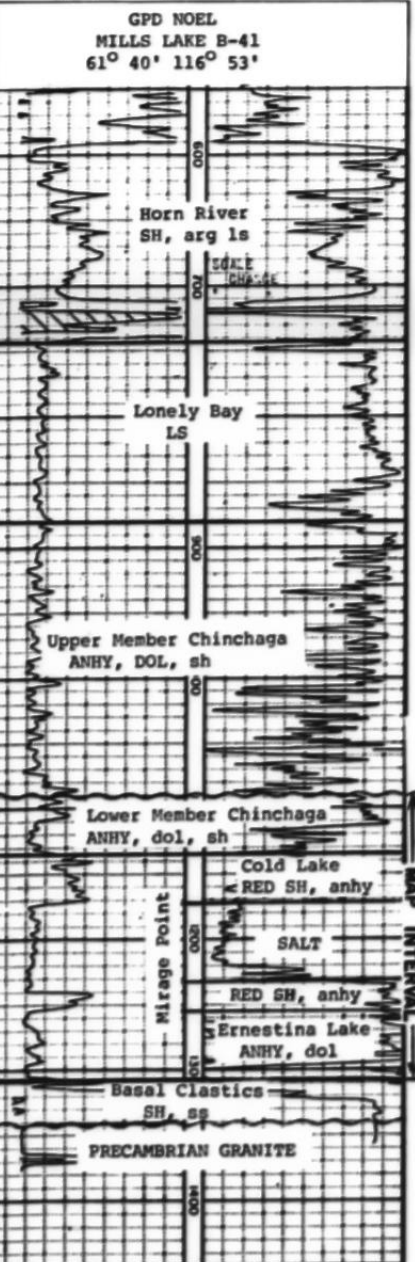
[illegible]

FORMATION	ABBREVIATIONS
-----------	---------------

FORMATION	ABBREVIATIONS
U.C.N.	Upper Chinage
W.L.	Willow Lake
Hea	Headless
Edb	Edburf Member
L.C.N.	Lower Chinage
G.L.	Cold Lake Member
Enr L.	Ernestina Lake Member
Ans	Ansica
Fun	Fun
Lon	Londry
Man	Manetoe
Som	Somire
Com	Comail
Del	Delame
M.Kin	Mount Kinde
Sol R.	Soline River
WH	Whitfish
Roe R.	Road River
Est	Estabroffine
Sun	Sunbroad

[illegible]

1982 MACKENZIE BASIN CANADA LANDS EXPLORATION PROGRAM



LOW
AND OLDER
MIDDLE DI
C
YUKON A