



SEISMOGRAPH SURVEY OF THE
GRANDVIEW AREA, N.W.T.
PROSPECT NO. K-208

54-6-6-21
ott.

INTRODUCTION

The Grandview Area K-208 survey was undertaken as a preliminary reconnaissance study of those lands south and west of the R.O.C. Grandview Hills well in which Sunoco E. & P. Limited has a part interest.

Geophysical data was purchased from Atlantic Richfield Canada Ltd. and processed by Teledyne Exploration Ltd. to sectional display. The 160.8 miles of 100% reflection information were corrected to a +900 foot datum using a correction velocity of 10,000 ft/sec.

PREVIOUS REPORTS:-

None

Abstracted for
Geo-Science Data Index

Date _____

RESULTS AND CONCLUSIONS

The following maps accompany this report:-

- Shotpoint Location Map
- Top Middle Devonian Carbonates

The four lines of seismic data displayed only one mapable reflection identified at the R.O.C. Grandview Hills well as the top of the Middle Devonian Carbonates. This horizon may be totally isolated by erosional unconformities from the prime targets in the area, however, indications of high and faulted structure on this horizon are encouraging that anomalous conditions may exist on the deeper Bear Rock (Devonian) and Ronning (Silurian) formations.

RECOMMENDATIONS

It is recommended that additional seismic be obtained over the interest lands.

GEOPHYSICS BY: P. E. Chaney, Jr.
REPORT BY: J. D. Card

Signed: _____

Approved: _____

JDC:caj

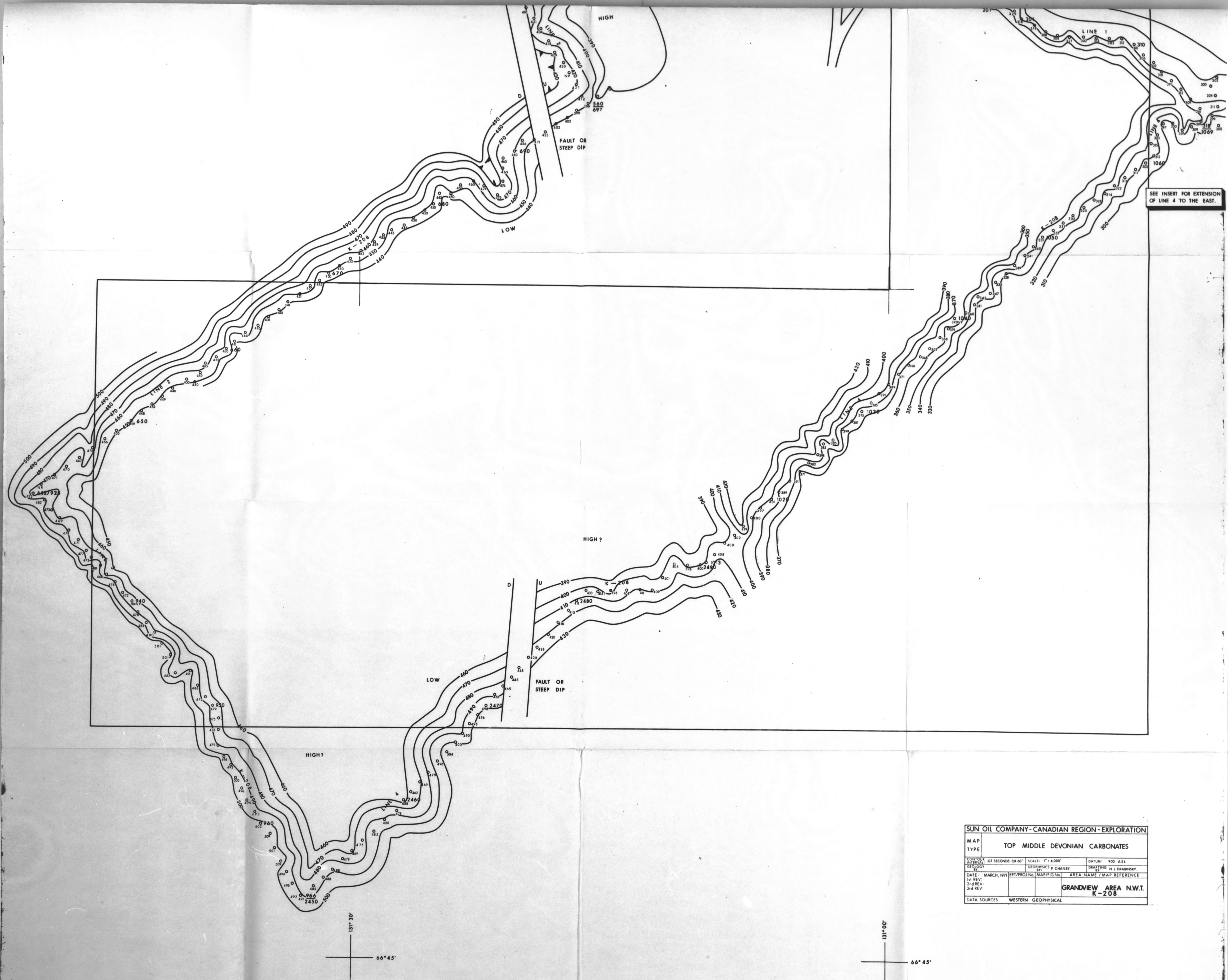
April 11, 1972



INDEX OF CANADIAN REGION



AREA COVERED BY THIS REPORT



SUN OIL COMPANY-CANADIAN REGION-EXPLORATION			
MAP TYPE	TOP MIDDLE DEVONIAN CARBONATES		
CONTOUR INTERVAL	50 FEET OR 40'	SCALE: 1" = 4,000'	DATE: 900 A.S.L.
GEOPHYSICIAN	GEOPHYSICS P. CHANEY	DRAWING	N.L. DRABINSKY
DATE: MARCH, 1971	MAP/FIG. NO.	AREA NAME / MAP REFERENCE	
1st REV.		GRANDVIEW AREA N.W.T.	
2nd REV.		K-208	
3rd REV.		DATA SOURCES: WESTERN GEOPHYSICAL	

