

FINAL REPORT ON GEOPHYSICAL OPERATIONS

ON

PERMIT NOS. 1004 and 1005

The above permits lie just north of the British Columbia border in the Yukon Territory and the Northwest Territories.

The seismic evaluation program which began on January 16, 1963 and ended on March 3, 1963 was concentrated in the greater part of Permit 1005, and in the northern half of Permit 1004. Off permit lines of control were extended to tie in the Pan American Beaver River locations in Block K of N.T.S. 94-N-16, and the Pan American Kotaneelee drilling location in Section 50 of grid area 60°10'00" N. - 124°00'00" W.

Working conditions were fair to rough throughout the field operations. Considerable difficulty was encountered on the steep slopes of the surface ridge in the west half of Permit 1005.

Field equipment used consisted of three bulldozers, two seismic drills, three water trucks, and conventional wheeled recording equipment.

The heavy snowfall with severe drifting on the eastern slopes of the surface ridge in Permit 1005, and the cutting of new line through fairly heavy timber in the north half of Permit 1004 necessitated the use of three bulldozers.

Dynamite charges varied from 5/8 lb. to 10 lbs. The best records were obtained from charges of from 2½ to 5 lbs.

The average hole was drilled to a depth of 45 feet.

Monuments 592 and 593 were used as control points for vertical surface control. All loops tied within reasonable limits.

All seismic times were reduced to a 1500 foot datum as follows:

- (1) A drift correction at a velocity of V_1 was used to correct for a depth of drift calculated from:

$$\text{Drift} = \frac{(T_{int} - T_{uh}) V_1}{2 \cos \frac{V_1}{V_2}}$$

- (2) A replacement velocity of 10,000 ft. per second was used to correct to datum.

Attached are the following maps:

- ✓ 1. Surface Elevation Map

- (not received) 2. Mattson (time).

TEXACO EXPLORATION COMPANY

Signed: R.F. ZIMMERLY

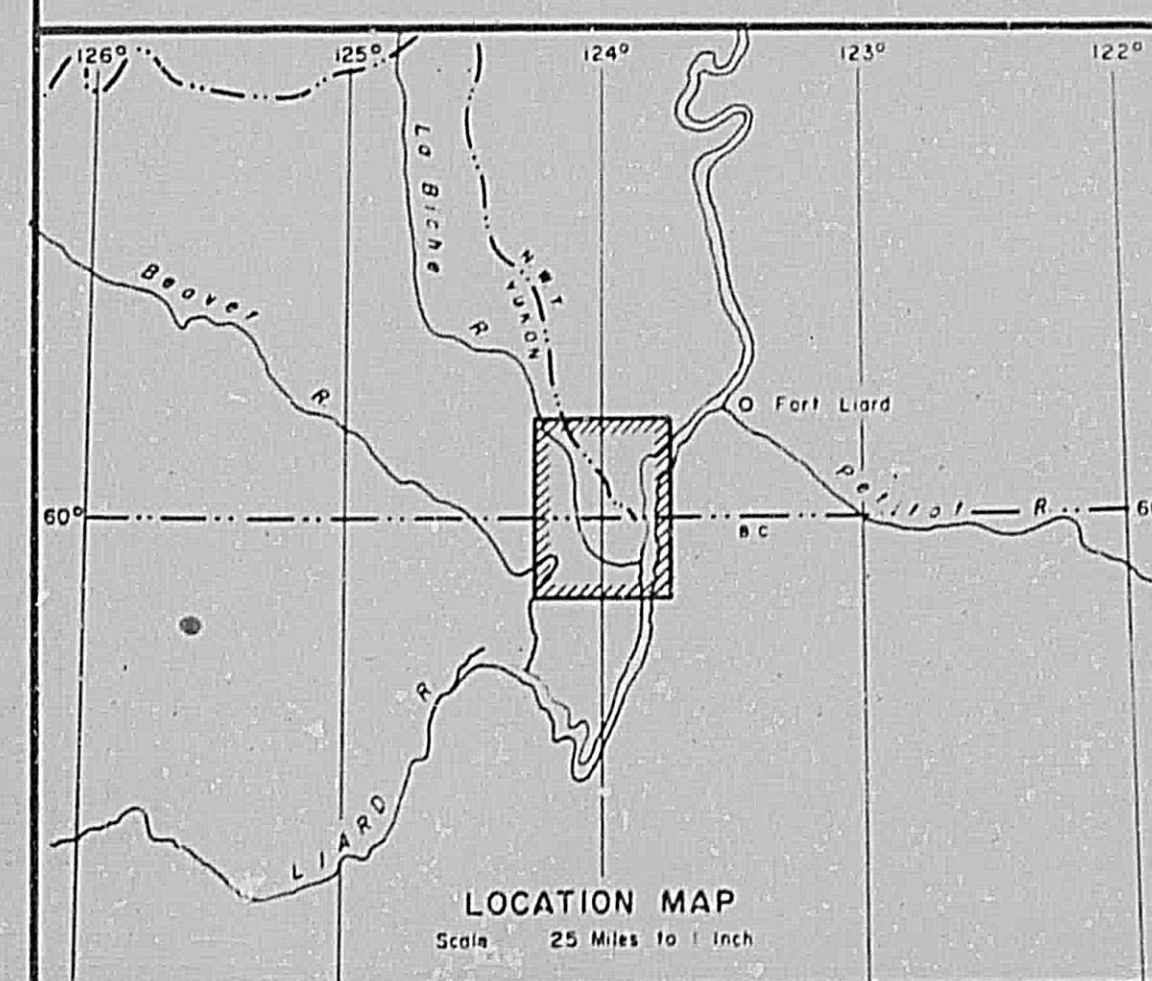
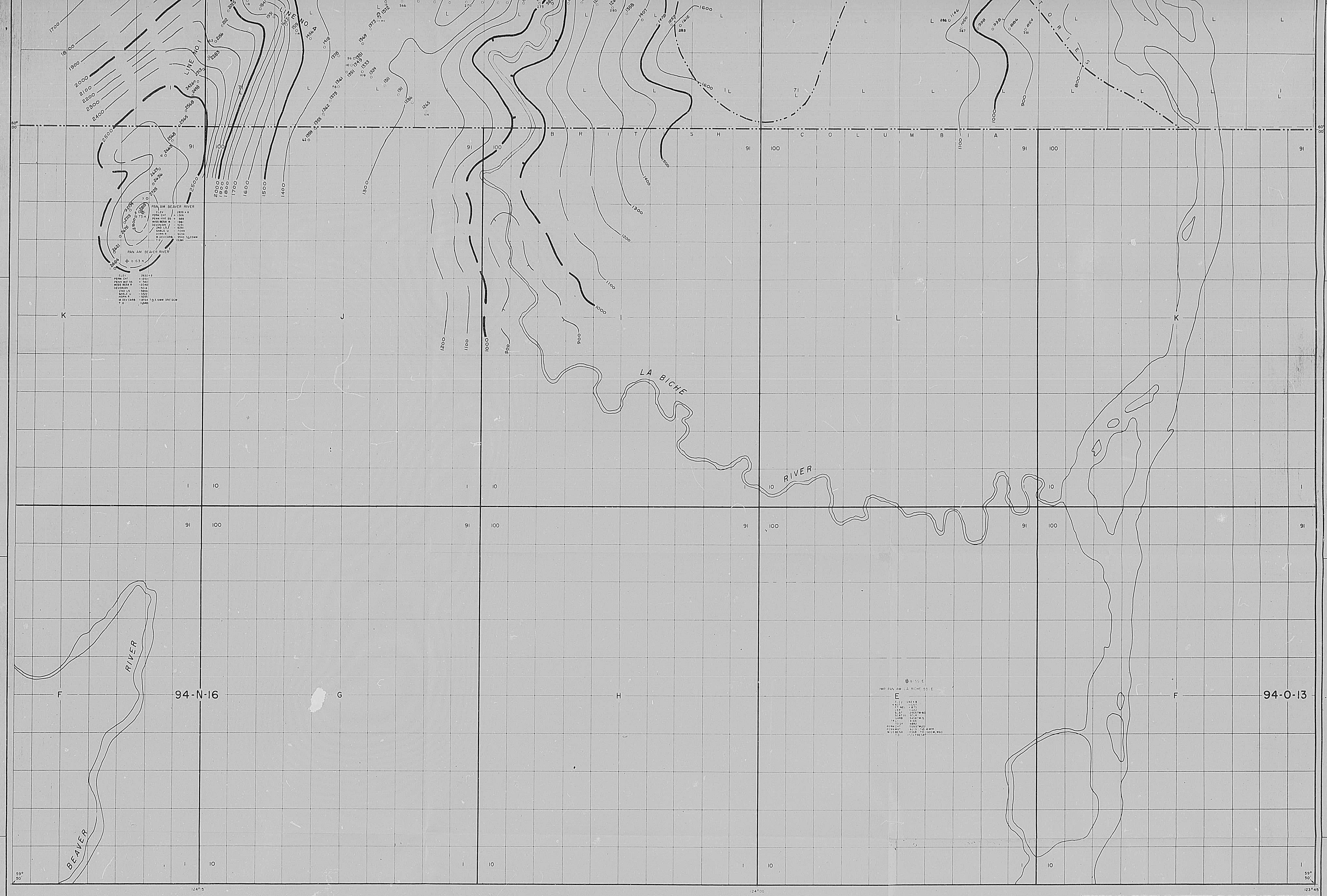
R. F. Zimmerly,
Chief Geophysicist.

AK-lh

Encls.

Calgary, Alberta,
June 14, 1963.





(TOPOGRAPHICAL FEATURES AS INTERPRETED ON THIS MAP ARE APPROXIMATE.)

TEXACO EXPLORATION COMPANY
CALGARY ALBERTA CANADA

PERMITS 1004 & 1005
YUKON N.W.T. B.C., CANADA.
SURFACE ELEVATIONS

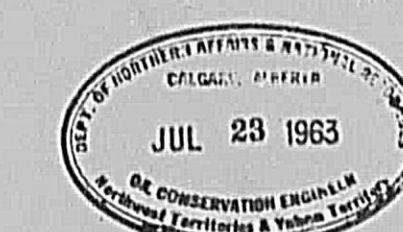
CONTOUR INTERVAL: 100 FT.
SCALE: 2 IN. = 1 MI.
DATUM: SEA LEVEL

SEISMIC PARTY NO. 61

DATE: JUNE 14, 1963

17-6-1-45

CENTURY GEOPHYSICAL CORP. OF CANADA



SEISMIC REFERENCE DATUM: 1500 FT.
SEISMIC REFERENCE METHOD: RECTILINEAR COR.



30x

West Canadian Graphic Industries Ltd.

